



# Panama 0 - 1 Jamaica

Group F - Match 29  
29 July 2023  
20:30 Kick Off  
Perth Oval

**POST MATCH SUMMARY REPORT**

# Match Summary - Teams

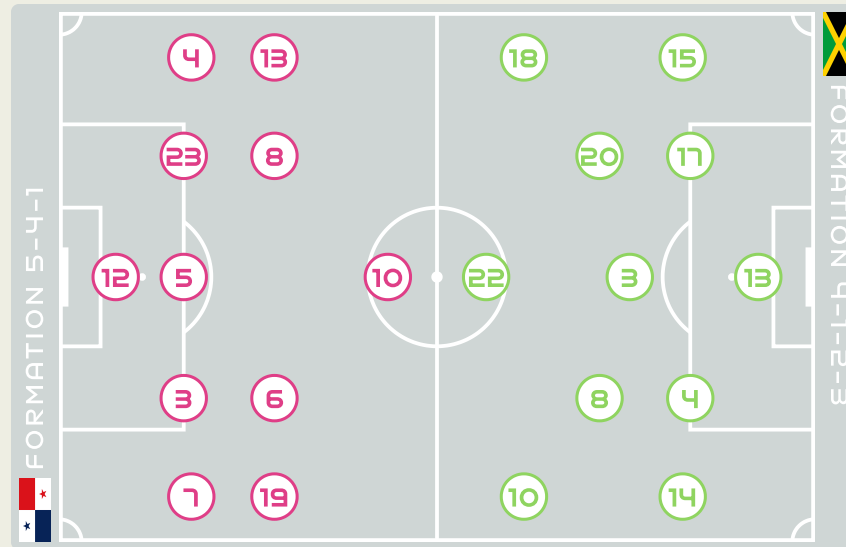


## STARTING

12	GK	BAILEY Yenith	
3	DF	NATIS Wendy	
4	DF	CASTILLO Katherine	
5	DF	PINZON Yomira	
6	MF	SALAZAR Deysire	17' ↓ 46'
7	MF	CEDENO Emily	13'
8	MF	GONZALEZ Schiandra	↓ 78'
10	MF	COX Marta (C)	
13	FW	TANNER Riley	
19	FW	CEDENO Lineth	↓ 65'
23	DF	BALTRIP-REYES Carina	↓ 87'

## SUBSTITUTES

1	GK	FABREGA Sasha	
22	GK	CORDOBA Farissa	
2	DF	JAEN Hilary	↑ 87'
9	FW	RILEY Karla	↑ 65'
11	MF	MILLS Natalia	
14	MF	MONTENEGRO Carmen	↑ 78'
15	DF	VARGAS Rosario	
16	DF	ESPINOSA Rebeca	
17	MF	BATISTA Laurie	
18	FW	HERNANDEZ Erika	
20	MF	QUINTERO Aldrith	↑ 46'
21	DF	DE OBALDIA Nicole	



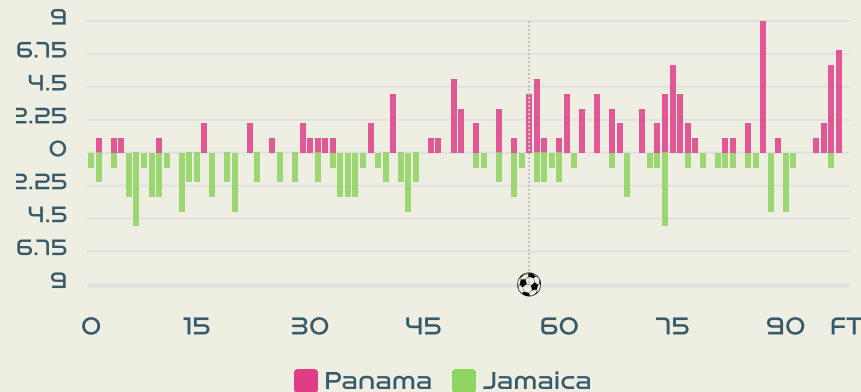
## STARTING

SPENCER Rebecca	GK	13	
SAMPSON Vyan	DF	3	
SWABY Chantelle	DF	4	
SPENCE Drew	MF	8	
↓ 80'	BROWN Jody	MF	10
↓ 31'	BLACKWOOD Deneisha	DF	14
↓ 87'	CAMERON Tiffany	MF	15
⚽ 56'	(C) SWABY Allyson	DF	17
↓ 65'	CARTER Trudi	MF	18
↓ 87'	PRIMUS Atlanta	MF	20
↓ 80'	McKENNA Kayla	MF	22

## SUBSTITUTES

SCHNEIDER Sydney	GK	1	
BROOKS Liya	GK	23	
↑ 80'	WASHINGTON Solai	MF	2
	PLUMMER Konya	DF	5
	SOLAUN Havana	MF	6
↑ 87'	McNAMARA Peyton	MF	7
↑ 80'	SIMMONDS Kameron	FW	9
	VAN ZANTEN Kalyssa	MF	12
	BAILEY-GAYLE Paige	MF	16
↑ 87'	WILTSHIRE Tiernny	MF	19
↑ 65'	MATTHEWS Cheyna	FW	21

## Distribution in the Final Third



# Match Summary - Key Statistics



## Possession

Total	44.2%	17.3%	38.5%	Total
0	Goals			1
12 (4)	Attempts at Goal (On Target)			20 (4)
366 (271)	Total Passes (Complete)			331 (256)
74 %	Pass Completion %			77 %
79	Completed Line Breaks			84
1	Defensive Line Breaks			8
84	Receptions in the Final Third			107
22	Crosses			18
20	Ball Progressions			30
201 (70)	Defensive Pressures Applied (Direct Pressures)			198 (54)
70	Forced Turnovers			87
106	Second Balls			98
101.4 km	Total Distance Covered			102.2 km
4.5 km	Zone 4 - Low Speed Sprinting: 19-23km/h			4.5 km



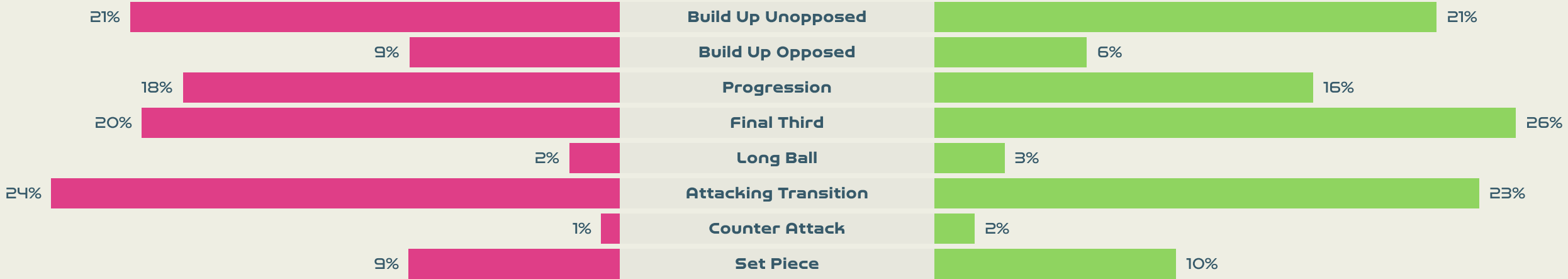
Panama

## Phases of Play

Jamaica



### IN POSSESSION



### OUT OF POSSESSION





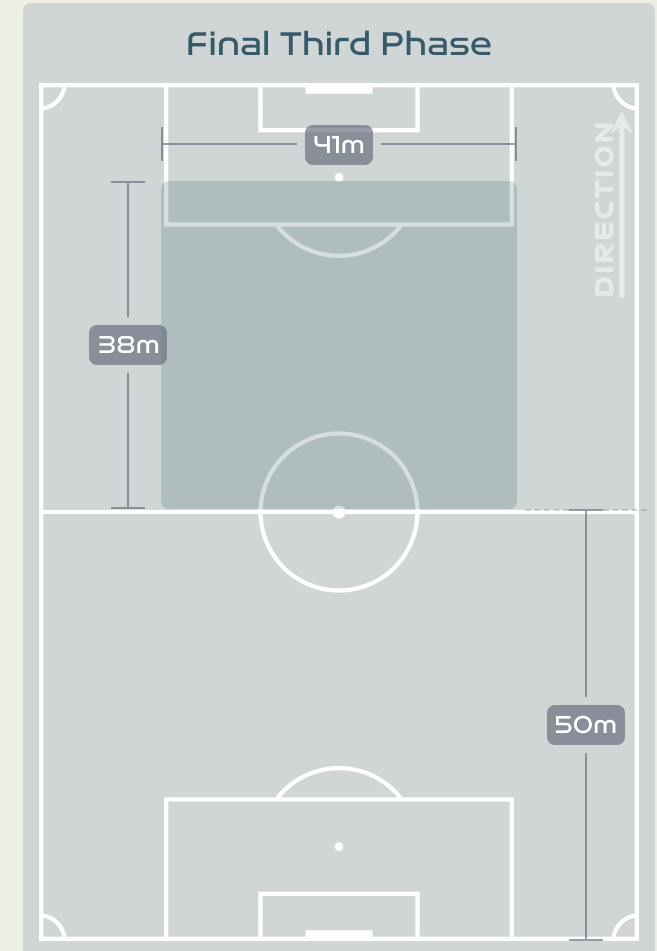
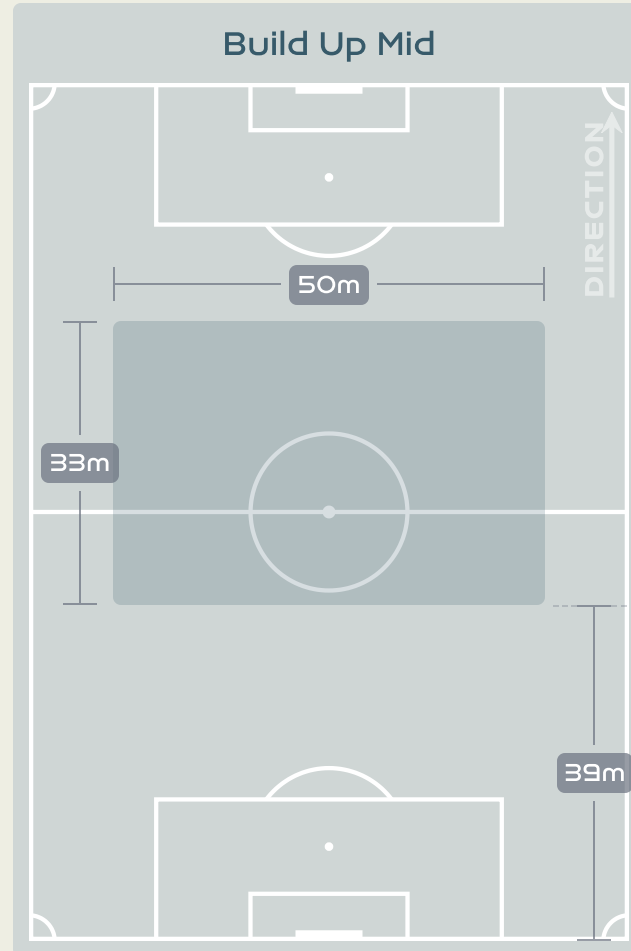
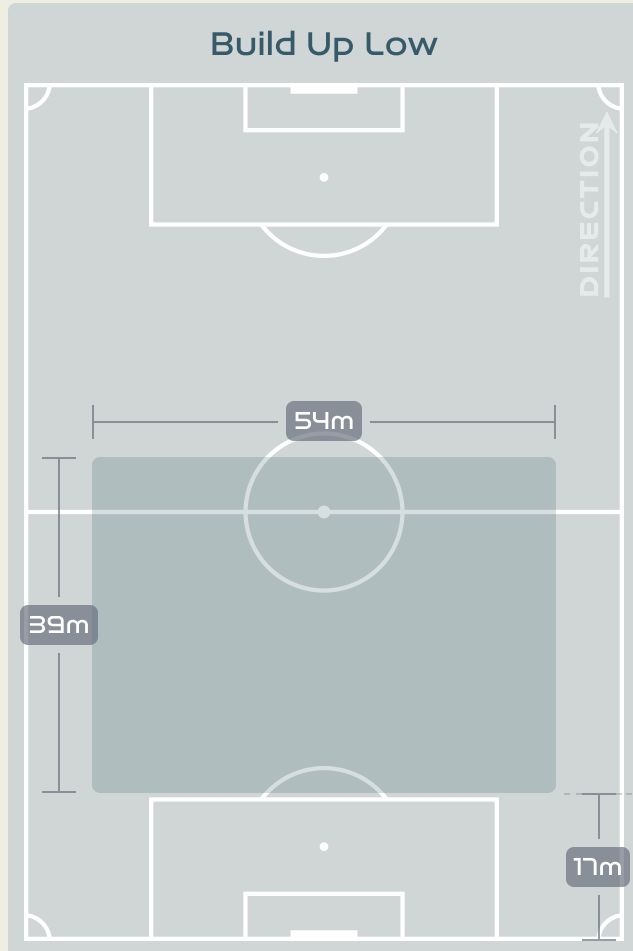
# IN POSSESSION



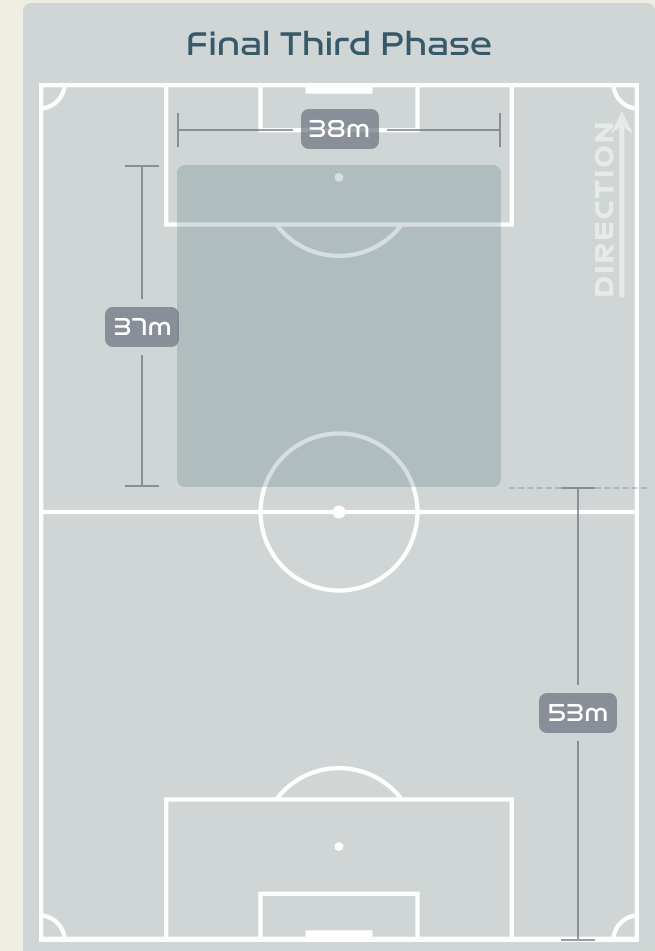
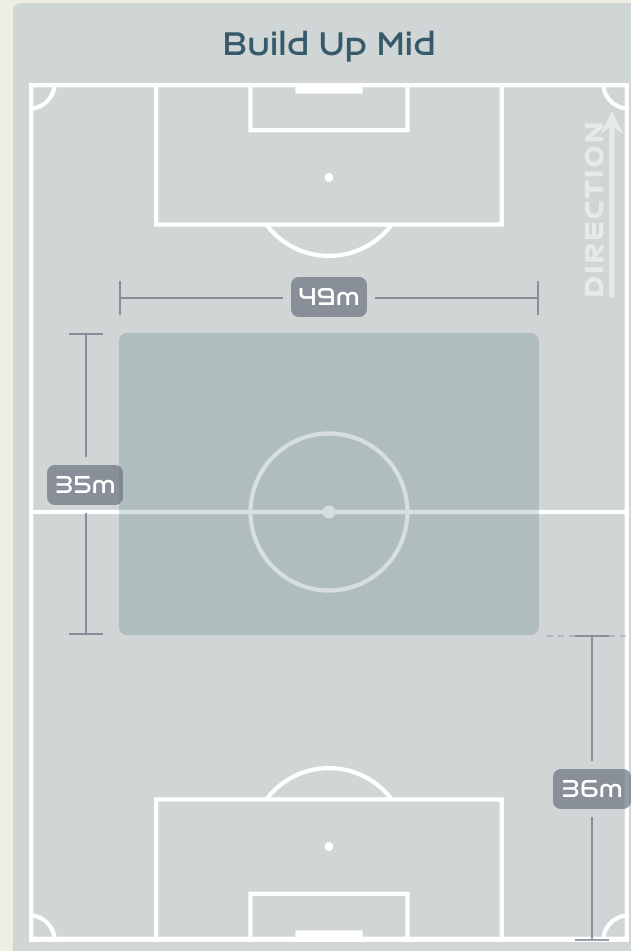
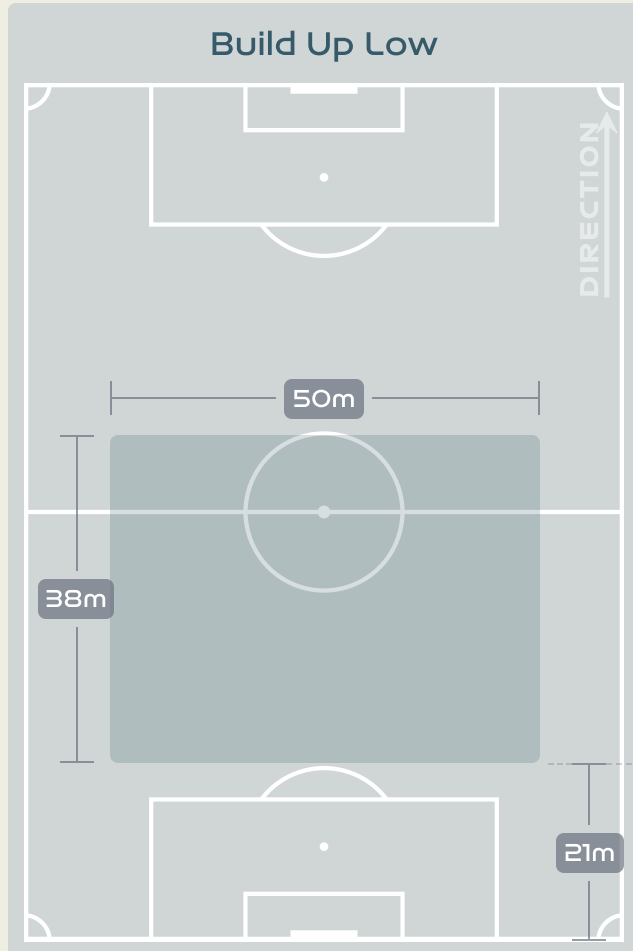
Panama v Jamaica



# In Possession Line Height & Team Length



# In Possession Line Height & Team Length



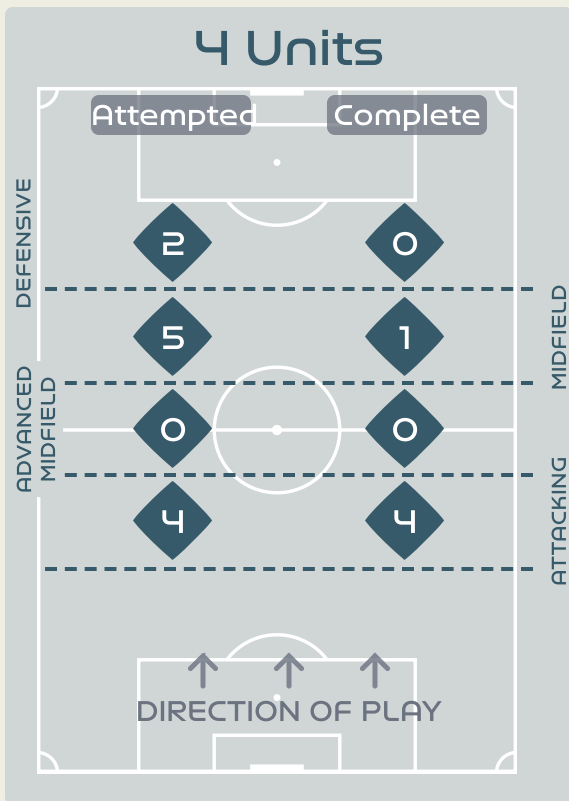
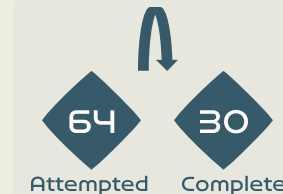
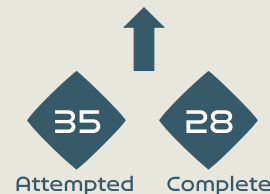
# Line Breaks



Panama

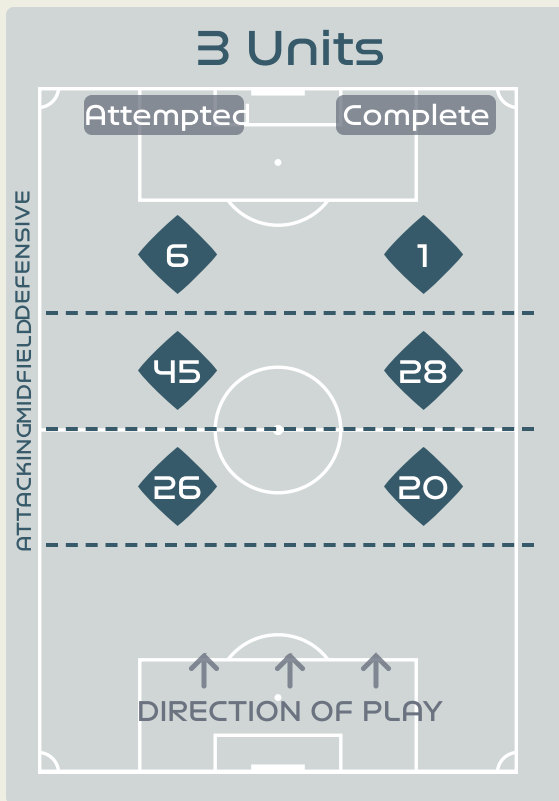
Attempted Line Breaks

128



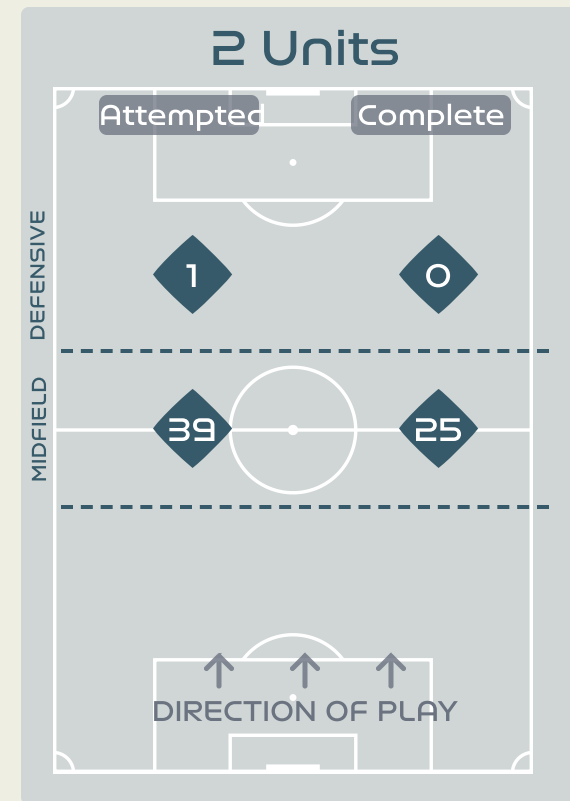
Attempted Line Breaks 11

Inside Shape 7  
Outside Shape 4



Attempted Line Breaks 77

Inside Shape 52  
Outside Shape 25



Attempted Line Breaks 40

Inside Shape 28  
Outside Shape 12



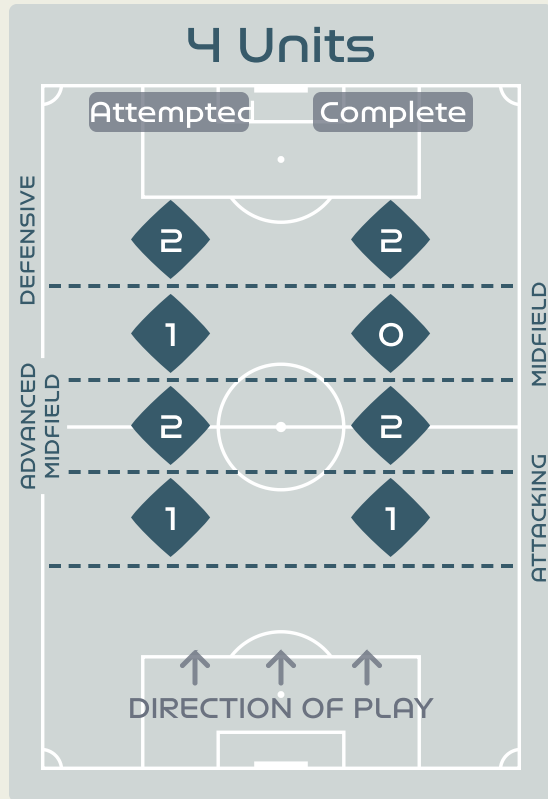
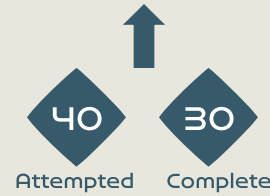
# Line Breaks



Jamaica

Attempted Line Breaks

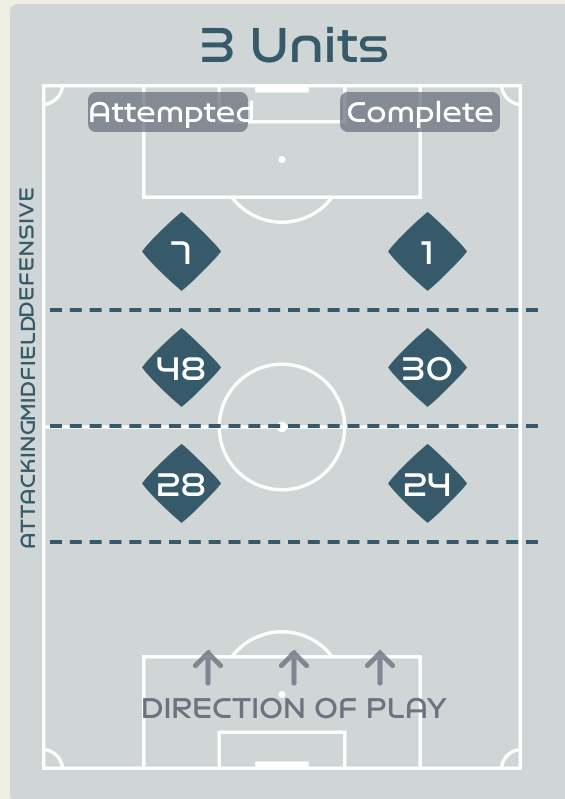
125



Attempted Line Breaks 6

Inside Shape 2

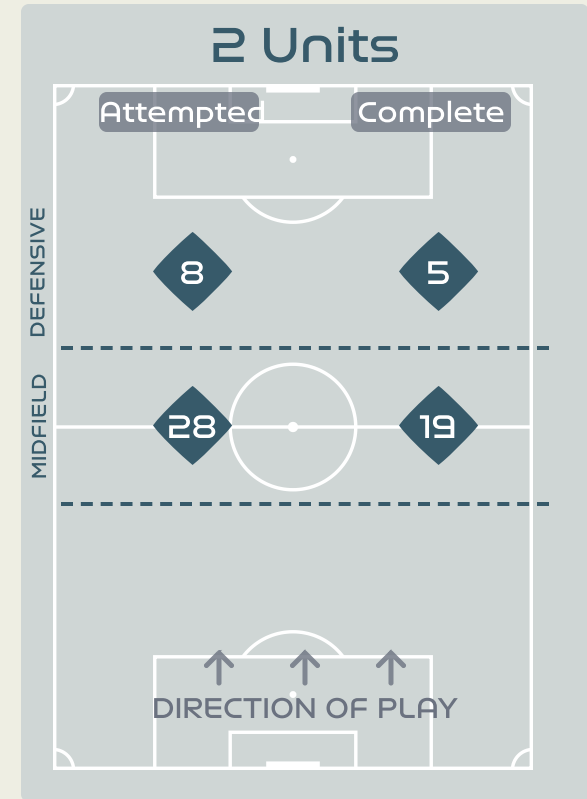
Outside Shape 4



Attempted Line Breaks 83

Inside Shape 47

Outside Shape 36



Attempted Line Breaks 36

Inside Shape 30

Outside Shape 6

## Line Breaks



					4 Units				3 Units			2 Units		Direction			Distribution Type		
#	Player	Line Breaks Attempted	Line Breaks Completed	Line Break Completion %	Attacking Line	Attacking Midfield Line	Midfield Line	Defensive Line	Attacking Line	Midfield Line	Defensive Line	Midfield Line	Defensive Line	Through	Around	Over	Pass	Cross	Ball Progression
12	BAILEY Yenith	4	2	50%	1	0	1	0	2	0	0	0	0	1	0	3	4	0	0
3	NATIS Wendy	19	10	52%	0	0	0	0	5	10	0	4	0	3	4	12	19	0	0
4	CASTILLO Katherine	14	9	64%	0	0	1	0	1	2	1	8	1	2	2	10	13	1	0
5	PINZON Yomira	17	11	64%	2	0	1	0	3	5	1	5	0	2	5	10	17	0	0
6	SALAZAR Deysire	7	4	57%	0	0	1	0	2	3	0	1	0	4	1	2	5	0	2
7	CEDENO Emily	4	4	100%	0	0	0	0	0	3	0	1	0	2	0	2	4	0	0
8	GONZALEZ Schiandra	5	5	100%	0	0	0	0	3	2	0	0	0	3	1	1	5	0	0
10	COX Marta	23	9	39%	0	0	1	1	0	10	3	8	0	8	5	10	19	4	0
13	TANNER Riley	1	1	100%	0	0	0	0	0	0	0	1	0	0	1	0	0	0	1
19	CEDENO Lineth	2	2	100%	0	0	0	0	0	1	0	1	0	1	1	0	2	0	0
23	BALTRIP-REYES Carina	14	8	57%	1	0	0	0	7	2	1	3	0	3	6	5	13	1	0
2	JAEN Hilary	3	2	66%	0	0	0	0	1	1	0	1	0	0	1	2	2	1	0
9	RILEY Karla	3	3	100%	0	0	0	0	0	1	0	2	0	1	1	1	3	0	0
14	MONTENEGRO Carmen	1	1	100%	0	0	0	0	0	1	0	0	0	1	0	0	1	0	0
20	QUINTERO Aldrith	11	8	72%	0	0	0	1	2	4	0	4	0	4	1	6	11	0	0

## Line Breaks



					4 Units				3 Units			2 Units		Direction			Distribution Type		
#	Player	Line Breaks Attempted	Line Breaks Completed	Line Break Completion %	Attacking Line	Attacking Midfield Line	Midfield Line	Defensive Line	Attacking Line	Midfield Line	Defensive Line	Midfield Line	Defensive Line	Through	Around	Over	Pass	Cross	Ball Progression
13	SPENCER Rebecca	17	14	82%	1	1	0	0	6	4	1	4	0	1	0	16	17	0	0
3	SAMPSON Vyan	10	7	70%	0	0	1	0	3	2	0	4	0	6	3	1	10	0	0
4	SWABY Chantelle	15	14	93%	0	0	0	0	6	5	0	4	0	7	4	4	15	0	0
8	SPENCE Drew	22	17	77%	0	0	0	2	5	6	2	5	2	12	2	8	20	0	2
10	BROWN Jody	9	5	55%	0	0	0	0	0	6	1	1	1	6	2	1	6	0	3
14	BLACKWOOD Deneisha	18	9	50%	0	0	0	0	3	8	1	4	2	0	3	15	16	2	0
15	CAMERON Tiffany	14	9	64%	0	0	0	0	3	8	0	2	1	1	5	8	13	0	1
17	SWABY Allyson	8	4	50%	0	1	0	0	1	4	0	1	1	2	1	5	8	0	0
18	CARTER Trudi	2	1	50%	0	0	0	0	0	0	0	2	0	0	1	1	2	0	0
20	PRIMUS Atlanta	3	1	33%	0	0	0	0	0	1	1	0	1	1	1	1	3	0	0
22	McKENNA Kayla	2	1	50%	0	0	0	0	0	1	1	0	0	2	0	0	2	0	0
2	WASHINGTON Solai	1	0	0%	0	0	0	0	0	1	0	0	0	1	0	0	1	0	0
7	McNAMARA Peyton	0	0	0%	0	0	0	0	0	0	0	0	0	0	0	0	0	0	0
9	SIMMONDS Kameron	0	0	0%	0	0	0	0	0	0	0	0	0	0	0	0	0	0	0
19	WILTSHIRE Tiernny	2	1	50%	0	0	0	0	0	1	0	1	0	0	1	1	1	0	1
21	MATTHEWS Cheyna	2	1	50%	0	0	0	0	1	1	0	0	0	1	1	0	2	0	0

# Passing Networks



#	Passes From ↓ to →	BAILEY Yenith	NATIS Wendy	CASTILLO Katherine	PINZON Yomira	SALAZAR Deysire	CEDENO Emily	GONZALEZ Schiandra	COX Marta	TANNER Riley	CEDENO Lineth	BALTRIP-REYES Carina	JAEN Hilary	RILEY Karla	MONTENEGRO Carmen	QUINTERO Aldrith
12	BAILEY Yenith		9	3	11	0	0	1	0	0	0	1	0	0	0	0
3	NATIS Wendy	5		1	4	1	1	0	4	0	0	5	0	0	0	1
4	CASTILLO Katherine	4	2		0	1	6	1	3	2	1	1	0	0	2	2
5	PINZON Yomira	4	6	3		2	2	0	1	2	1	6	1	3	0	1
6	SALAZAR Deysire	2	1	2	2		1	0	2	0	0	1	0	0	0	0
7	CEDENO Emily	0	0	3	0	2		1	5	0	0	1	0	1	0	0
8	GONZALEZ Schiandra	2	1	1	2	2	2		1	2	3	4	0	2	0	2
10	COX Marta	0	1	2	1	0	4	1		2	0	5	2	1	0	1
13	TANNER Riley	0	0	0	1	0	0	3	0		2	1	0	0	0	0
19	CEDENO Lineth	0	0	1	0	0	0	0	4	0		1	0	0	0	2
23	BALTRIP-REYES Carina	3	1	2	3	0	2	6	1	4	0		0	0	0	3
2	JAEN Hilary	0	0	0	0	0	0	0	3	0	0	0		1	0	0
9	RILEY Karla	0	0	1	1	0	2	0	1	1	0	0	1		0	2
14	MONTENEGRO Carmen	0	0	1	0	0	0	0	1	0	0	0	0	0		2
20	QUINTERO Aldrith	0	0	1	5	0	3	2	4	1	0	1	0	1	0	

## Top 5 Player to Player Passers

Player	Passed To	% of Total Team Passes
BAILEY Yenith	PINZON Yomira	4.5%
BAILEY Yenith	NATIS Wendy	3.6%
CASTILLO Katherine	CEDENO Emily	2.4%
PINZON Yomira	BALTRIP-REYES Carina	2.4%
PINZON Yomira	NATIS Wendy	2.4%

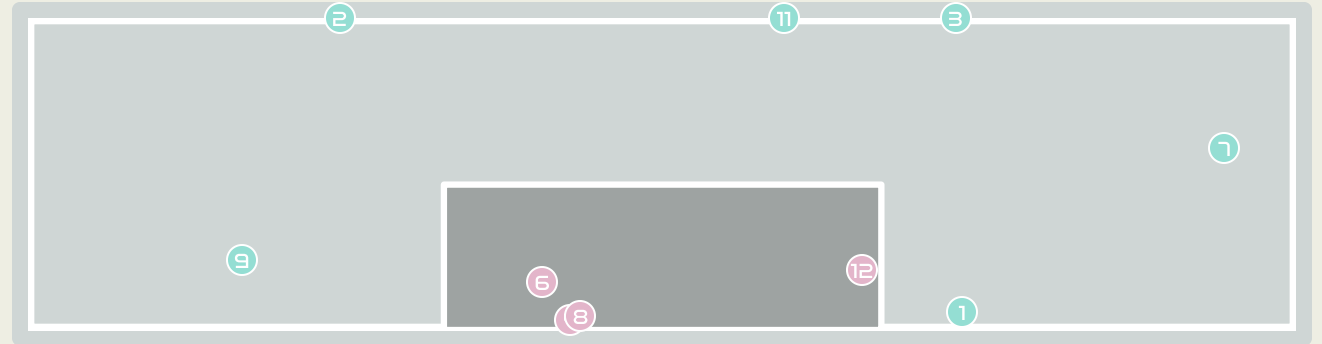
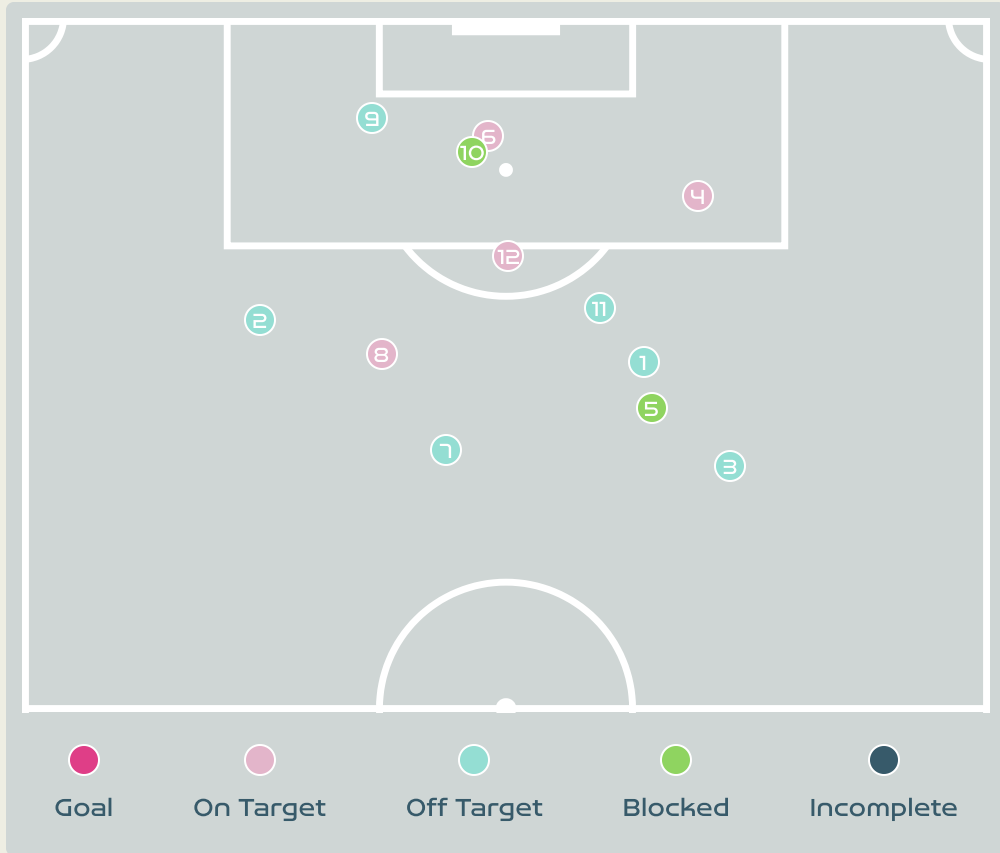
# Passing Networks








#	Passes From ↓ to →	SPENCER Rebecca	SAMPSON Vyan	SWABY Chantelle	SPENCE Drew	BROWN Jody	BLACKWOOD Deneisha	CAMERON Tiffany	SWABY Allyson	CARTER Trudi	PRIMUS Atlanta	McKENNA Kayla	WASHINGTON Solai	McNAMARA Peyton	SIMMONDS Kameron	WILTSHIRE Tiernny	MATTHEWS Cheyna
13	SPENCER Rebecca		1	5	0	1	2	3	8	0	1	1	1	0	0	0	1
3	SAMPSON Vyan	0		2	3	1	4	1	1	3	2	3	0	0	1	0	0
4	SWABY Chantelle	7	1		1	7	5	0	4	0	1	1	0	0	0	1	0
8	SPENCE Drew	0	1	1		6	7	4	0	3	2	1	1	0	0	0	1
10	BROWN Jody	1	0	1	8		4	1	0	1	2	4	0	0	0	0	0
14	BLACKWOOD Deneisha	2	1	6	5	6		0	0	0	0	0	0	0	0	0	1
15	CAMERON Tiffany	1	0	0	0	1	0		7	4	1	1	0	0	0	0	0
17	SWABY Allyson	8	4	5	1	0	0	4		2	2	0	0	0	0	0	0
18	CARTER Trudi	0	1	0	1	0	0	1	2		3	0	0	0	0	0	0
20	PRIMUS Atlanta	0	3	2	4	2	2	2	1	1		0	0	0	0	0	1
22	McKENNA Kayla	0	1	0	2	3	0	0	0	1	2		0	0	0	0	1
2	WASHINGTON Solai	0	0	0	1	0	0	0	0	0	0	0		1	0	0	0
7	McNAMARA Peyton	0	0	0	0	0	0	0	0	0	0	0	0		1	0	0
9	SIMMONDS Kameron	0	0	0	0	0	1	0	0	0	0	0	0	0		0	0
19	WILTSHIRE Tiernny	0	0	0	0	0	0	0	0	0	0	0	1	0	0		0
21	MATTHEWS Cheyna	0	0	0	0	0	0	0	0	0	0	2	0	1	0	0	

Top 5 Player to Player Passers		
Player	Passed To	% of Total Team Passes
SPENCER Rebecca	SWABY Allyson	3.5%
BROWN Jody	SPENCE Drew	3.5%
SWABY Allyson	SPENCER Rebecca	3.5%
SWABY Chantelle	SPENCER Rebecca	3.1%
SWABY Chantelle	BROWN Jody	3.1%

# Attempts at Goal



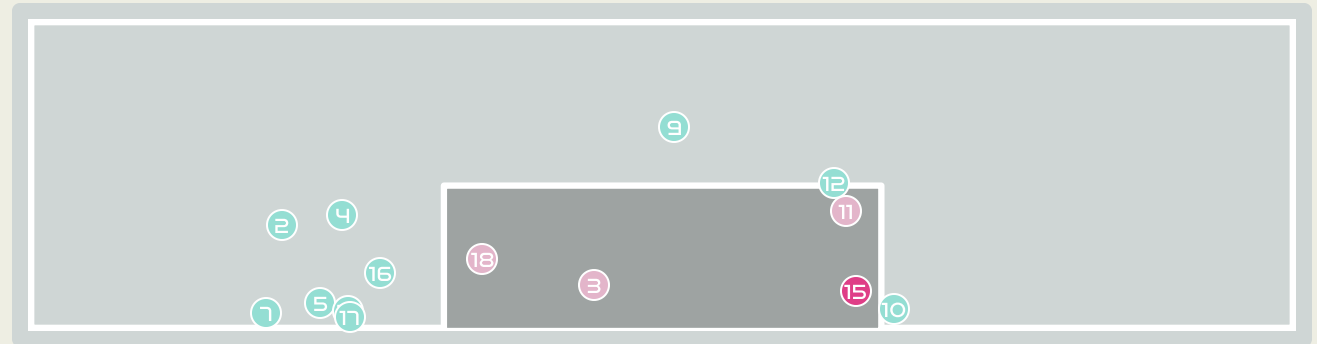
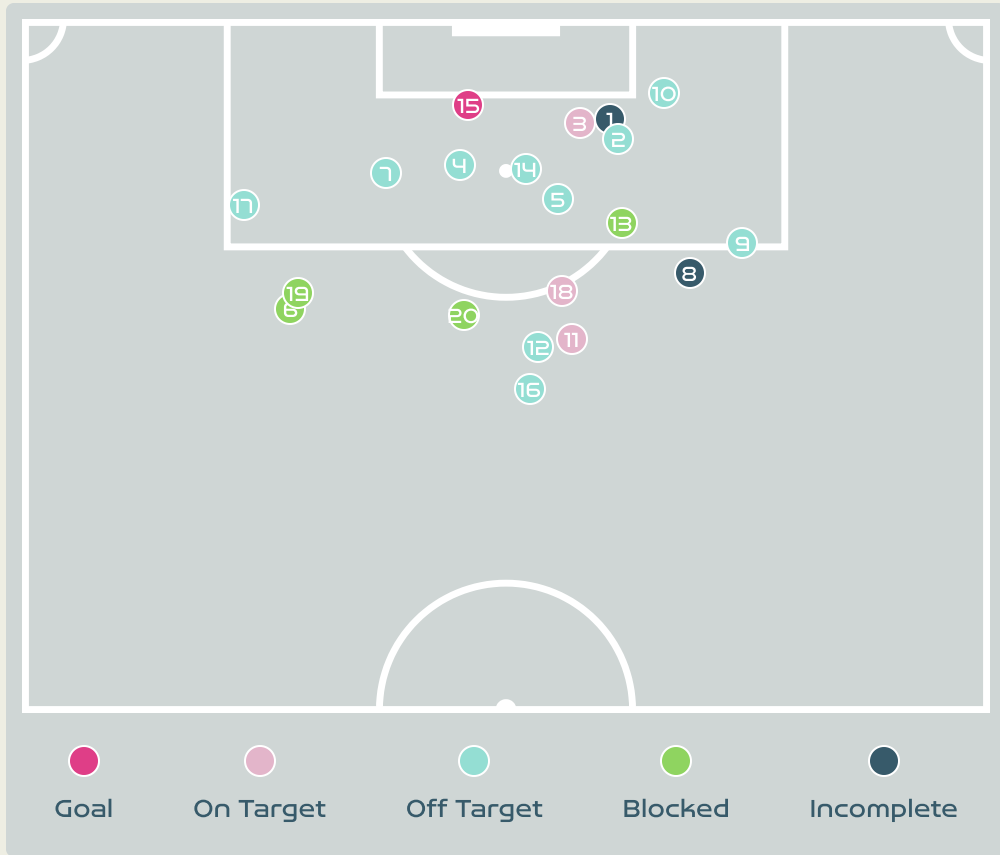
Key	Outcome	Shots
	Goals	0
	On Target	4
	Off Target	6
	Blocked	2
	Incomplete	0






## Attempts at Goal



Time	Player	Outcome	Body Part	Delivery Type
4	8 GONZALEZ Schiandra	Off Target	Right Foot	Pass
22	8 GONZALEZ Schiandra	Off Target	Left Foot	Loose Ball
27	10 COX Marta	Off Target	Right Foot	Pass
39	10 COX Marta	On Target - Saved	Right Foot	Loose Ball
45	8 GONZALEZ Schiandra	Incomplete - Blocked	Right Foot	Loose Ball
47	3 NATIS Wendy	On Target - Saved	Head	Corner
47	7 CEDENO Emily	Off Target	Right Foot	Loose Ball
61	10 COX Marta	On Target - Saved	Right Foot	Pass
68	10 COX Marta	Off Target	Left Foot	Loose Ball
95	7 CEDENO Emily	Incomplete - Blocked	Left Foot	Other
97	20QUINTERO Aldrith	Deflected Off Target - Defensive Event	Right Foot	Pass
97	10 COX Marta	On Target - Saved	Right Foot	Pass

# Attempts at Goal



Key	Outcome	Shots
	Goals	1
	On Target	3
	Off Target	10
	Blocked	4
	Incomplete	2





## Attempts at Goal

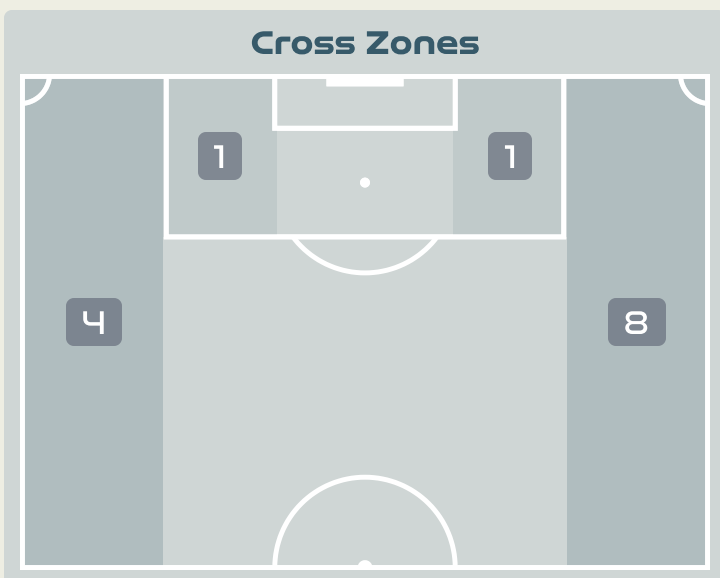
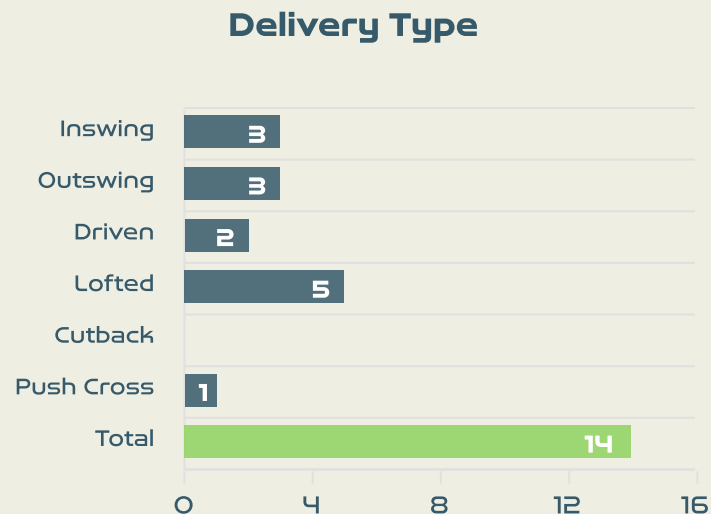
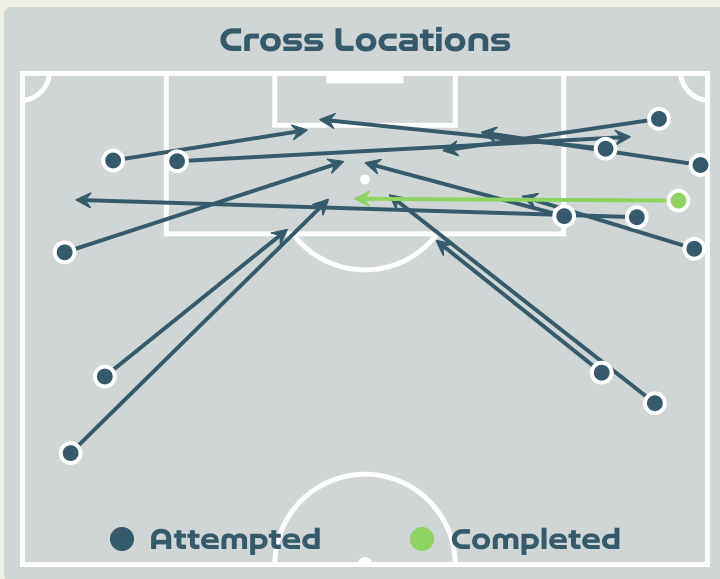
Time	Player	Outcome	Body Part	Delivery Type
6	15 CAMERON Tiffany	Incomplete - Player On Ball Error	Right Foot	Pass
6	15 CAMERON Tiffany	Off Target	Left Foot	Ball Progression
8	4 SWABY Chantelle	On Target - Saved	Head	Freekick
9	18 CARTER Trudi	Deflected Off Target - Defensive Event	Right Foot	Cross
10	20 PRIMUS Atlanta	Deflected Off Target - Defensive Event	Left Foot	Corner
10	14 BLACKWOOD Deneisha	Incomplete - Blocked	Left Foot	Pass
19	20 PRIMUS Atlanta	Deflected Off Target - Defensive Event	Right Foot	Loose Ball
20	3 SAMPSON Vyan	Incomplete - Player On Ball Error	Right Foot	Pass
26	20 PRIMUS Atlanta	Off Target	Right Foot	Loose Ball
32	8 SPENCE Drew	Off Target	Left Foot	Loose Ball
34	3 SAMPSON Vyan	On Target - Saved	Right Foot	Loose Ball
45	8 SPENCE Drew	Off Target	Right Foot	Freekick
54	20 PRIMUS Atlanta	Incomplete - Blocked	Right Foot	Pass
54	18 CARTER Trudi	Deflected Off Target - Defensive Event	Right Foot	Loose Ball
55	17 SWABY Allyson	On Target - Goal	Head	Corner
62	8 SPENCE Drew	Off Target	Right Foot	Pass
85	21 MATTHEWS Cheyna	Off Target	Right Foot	Pass

# Attempts at Goal



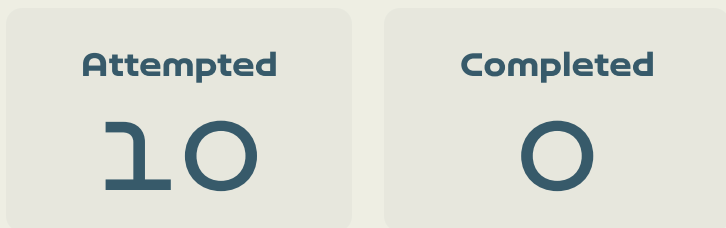
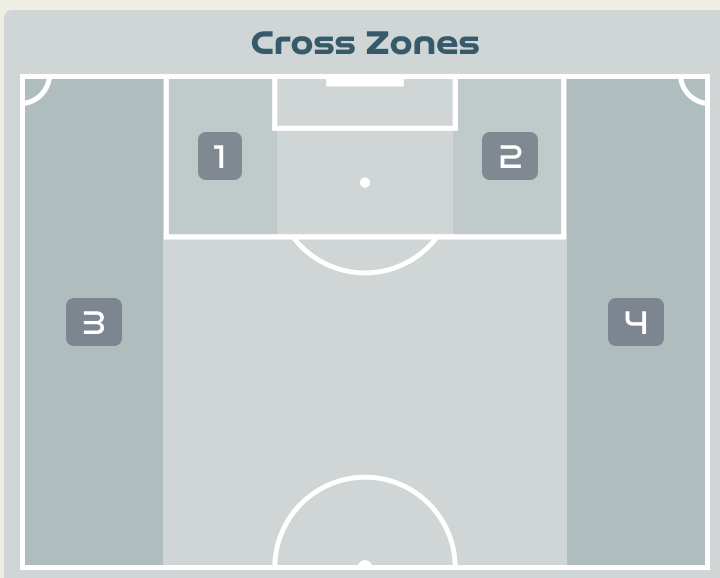
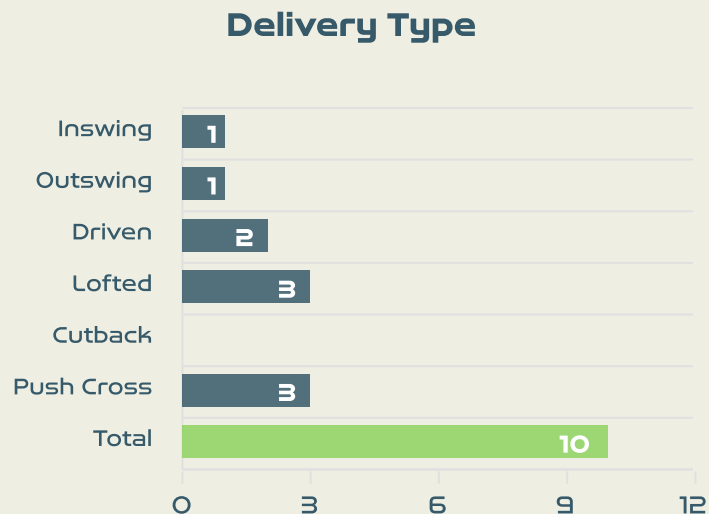
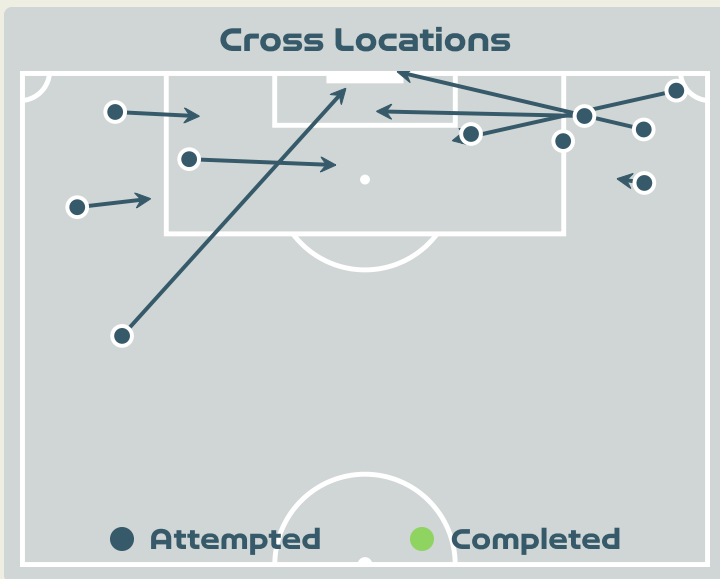
Time	Player	Outcome	Body Part	Delivery Type
88	7 McNAMARA Peyton	Deflected On Target - Saved	Right Foot	Pass
91	8 SPENCE Drew	Incomplete - Blocked	Right Foot	Ball Progression
91	8 SPENCE Drew	Incomplete - Blocked	Left Foot	Loose Ball

# Crosses (Open Play)



#	Player	Inswing	Outswing	Driven	Lofted	Cutback	Push Cross	Total Attempted
12	BAILEY Yenith	0	0	0	0	0	0	0
3	NATIS Wendy	0	0	0	0	0	0	0
4	CASTILLO Katherine	0	3	0	0	0	0	3
5	PINZON Yomira	0	0	0	0	0	0	0
6	SALAZAR Deysire	0	0	0	0	0	0	0
7	CEDENO Emily	0	0	1	1	0	0	2
8	GONZALEZ Schiandra	0	0	0	0	0	0	0
10	COX Marta	1	0	0	3	0	1	5
13	TANNER Riley	0	0	1	1	0	0	2
19	CEDENO Lineth	0	0	0	0	0	0	0
23	BALTRIP-REYES Carina	1	0	0	0	0	0	1
2	JAEN Hilary	1	0	0	0	0	0	1
9	RILEY Karla	0	0	0	0	0	0	0
14	MONTENEGRO Carmen	0	0	0	0	0	0	0
20	QUINTERO Aldrith	0	0	0	0	0	0	0

# Crosses (Open Play)



#	Player	Inswing	Outswing	Driven	Lofted	Cutback	Push Cross	Total Attempted
13	SPENCER Rebecca	0	0	0	0	0	0	0
3	SAMPSON Vyan	0	0	0	0	0	0	0
4	SWABY Chantelle	0	0	0	0	0	0	0
8	SPENCE Drew	0	0	0	0	0	0	0
10	BROWN Jody	0	0	0	0	0	1	1
14	BLACKWOOD Deneisha	1	1	0	1	0	0	3
15	CAMERON Tiffany	0	0	1	1	0	0	2
17	SWABY Allyson	0	0	0	0	0	0	0
18	CARTER Trudi	0	0	0	1	0	0	1
20	PRIMUS Atlanta	0	0	0	0	0	1	1
22	McKENNA Kayla	0	0	1	0	0	0	1
2	WASHINGTON Solai	0	0	0	0	0	0	0
7	McNAMARA Peyton	0	0	0	0	0	0	0
9	SIMMONDS Kameron	0	0	0	0	0	1	1
19	WILTSHIRE Tiernny	0	0	0	0	0	0	0
21	MATTHEWS Cheyna	0	0	0	0	0	0	0

# Offering to Receive

278

Total Offers Made

89

Total Offers Received

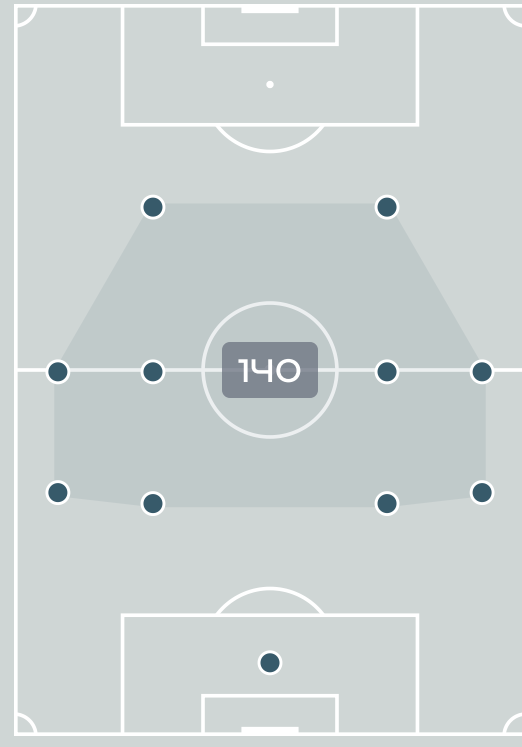
Most Offers

51

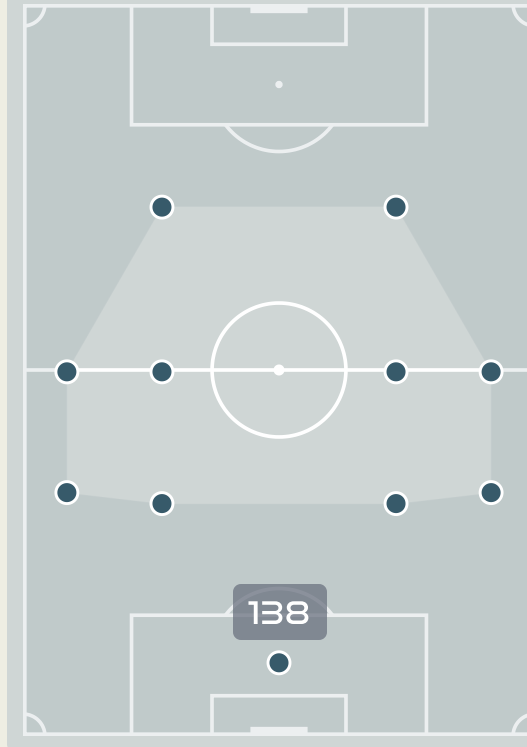
COX Marta  
CENTRE FORWARD

#	Player	Offers Made	Offers Received	% Made & Received
12	BAILEY Yenith	10	6	60%
3	NATIS Wendy	17	7	41.2%
4	CASTILLO Katherine	25	11	44%
5	PINZON Yomira	3	2	66.7%
6	SALAZAR Deysire	10	4	40%
7	CEDENO Emily	49	16	32.7%
8	GONZALEZ Schiandra	16	5	31.2%
10	COX Marta	51	12	23.5%
13	TANNER Riley	34	4	11.8%
19	CEDENO Lineth	14	3	21.4%
23	BALTRIP-REYES Carina	10	4	40%
2	JAEN Hilary	5	3	60%
9	RILEY Karla	8	2	25%
14	MONTENEGRO Carmen	3	0	0%
20	QUINTERO Aldrith	23	10	43.5%

Offers Made Inside Shape



Offers Made Outside Shape



111

Offers Made in Final Third

107

Offers Made in Middle Third

60

Offers Made in Defensive Third



# Offering to Receive

254

Total Offers Made

91

Total Offers Received

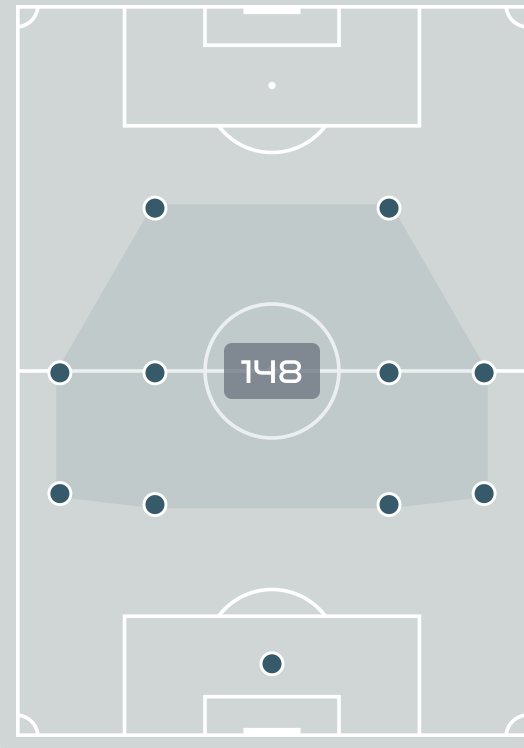
Most Offers

46

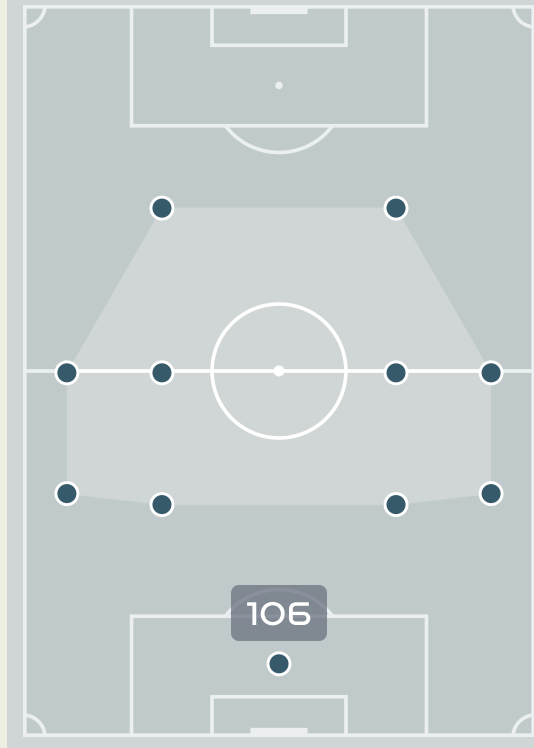
SPENCE Drew  
LEFT CENTRE MIDFIELD

#	Player	Offers Made	Offers Received	% Made & Received
13	SPENCER Rebecca	10	8	80%
3	SAMPSON Vyan	14	4	28.6%
4	SWABY Chantelle	2	0	0%
8	SPENCE Drew	46	11	23.9%
10	BROWN Jody	29	13	44.8%
14	BLACKWOOD Deneisha	25	14	56%
15	CAMERON Tiffany	10	5	50%
17	SWABY Allyson	17	6	35.3%
18	CARTER Trudi	20	9	45%
20	PRIMUS Atlanta	35	8	22.9%
22	McKENNA Kayla	27	6	22.2%
2	WASHINGTON Solai	0	0	0%
7	McNAMARA Peyton	2	2	100%
9	SIMMONDS Kameron	7	1	14.3%
19	WILTSHIRE Tiernny	1	0	0%
21	MATTHEWS Cheyna	9	4	44.4%

Offers Made Inside Shape



Offers Made Outside Shape



94

Offers Made in Final Third

125

Offers Made in Middle Third

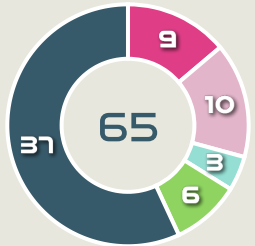
35

Offers Made in Defensive Third

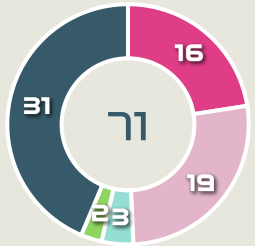
# Movement to Receive

## Movement Types by Phase

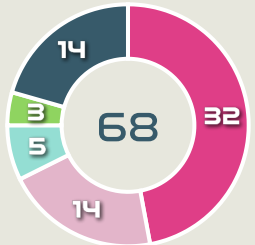
### Final Third Phase



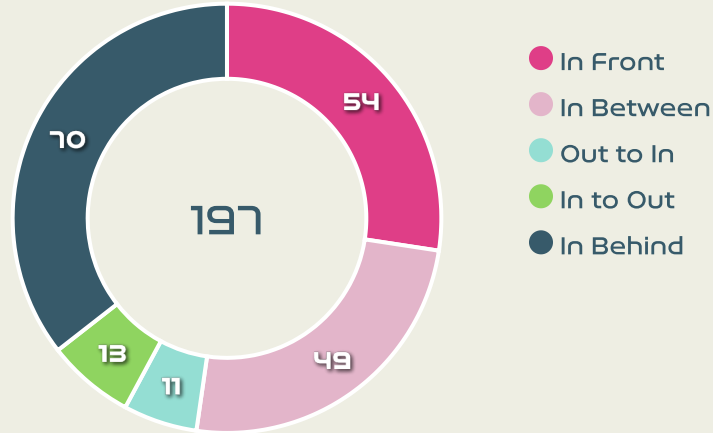
### Progression Phase



### Build Up Phase



## All Movement Types

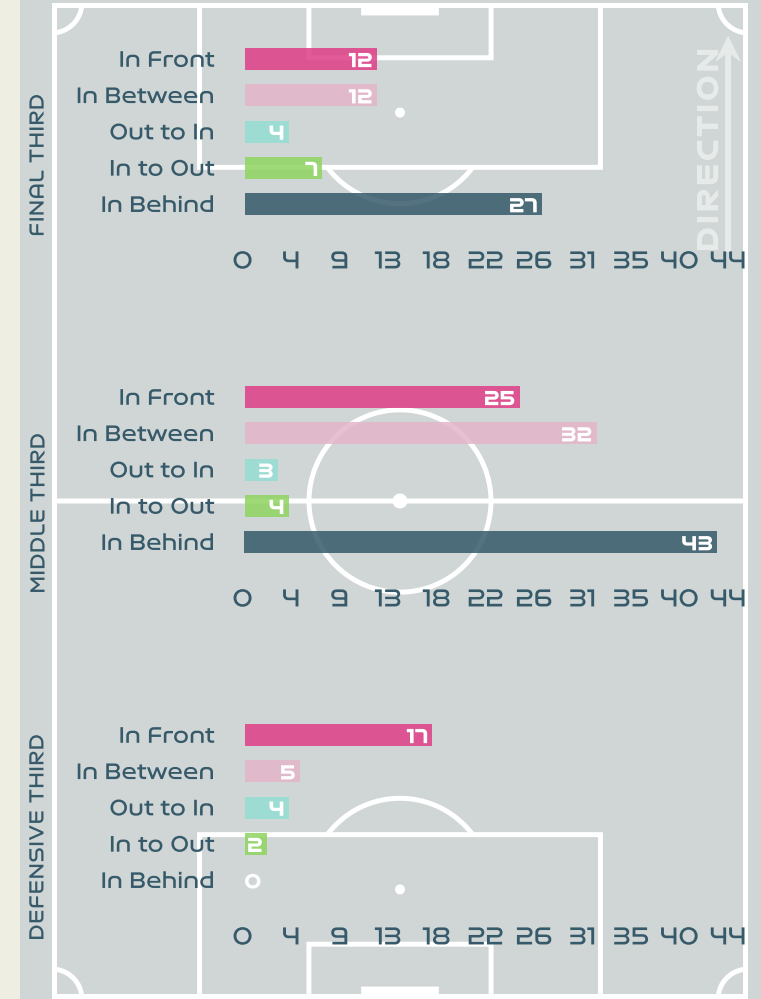


- In Front
- In Between
- Out to In
- In to Out
- In Behind

## Top Ranked Players

Type	Player	Movements
In Front	20 QUINTERO Aldrith	11
In Between	10 COX Marta	15
Out to In	7 CEDENO Emily	5
In to Out	10 COX Marta	11
In Behind	7 CEDENO Emily	22

## Movement Types Pitch Third

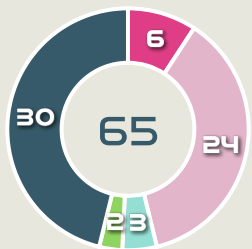




# Movement to Receive

## Movement Types by Phase

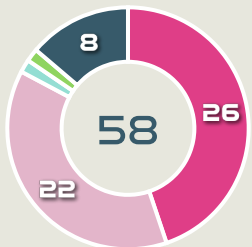
### Final Third Phase



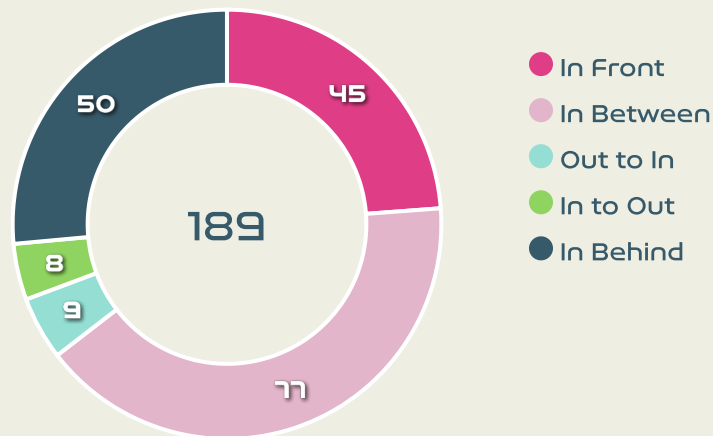
### Progression Phase



### Build Up Phase



## All Movement Types

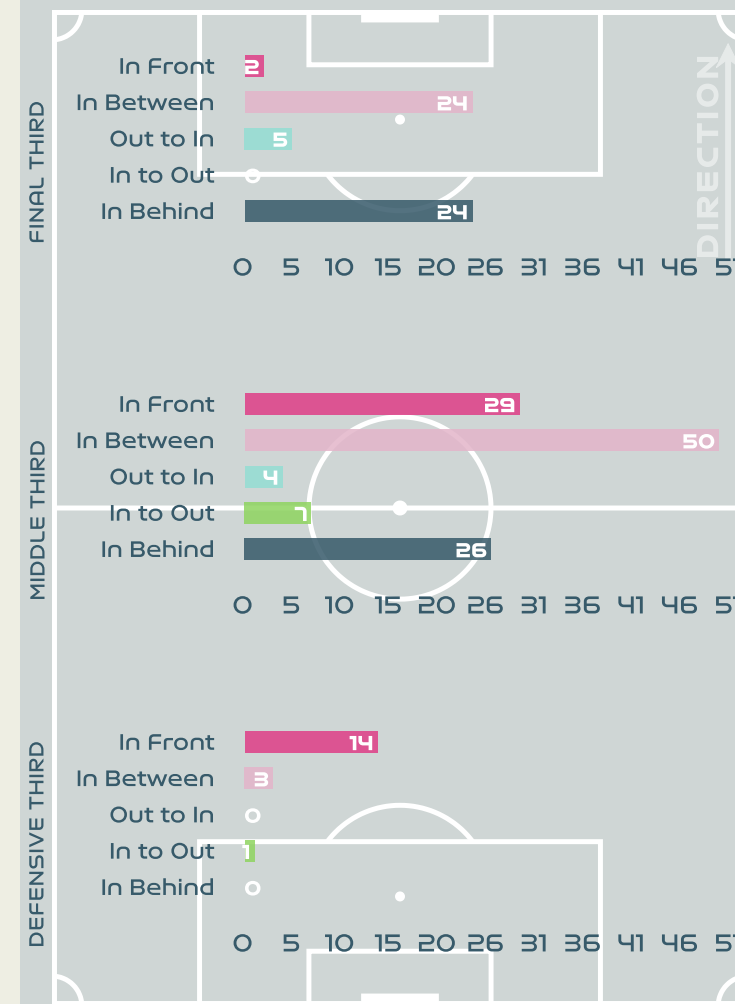


- In Front
- In Between
- Out to In
- In to Out
- In Behind

## Top Ranked Players

Type	Player	Movements
In Front	8 SPENCE Drew	13
In Between	20 PRIMUS Atlanta	25
Out to In	20 PRIMUS Atlanta	3
In to Out	22 McKENNA Kayla	3
In Behind	22 McKENNA Kayla	11

## Movement Types Pitch Third







# OUT OF POSSESSION

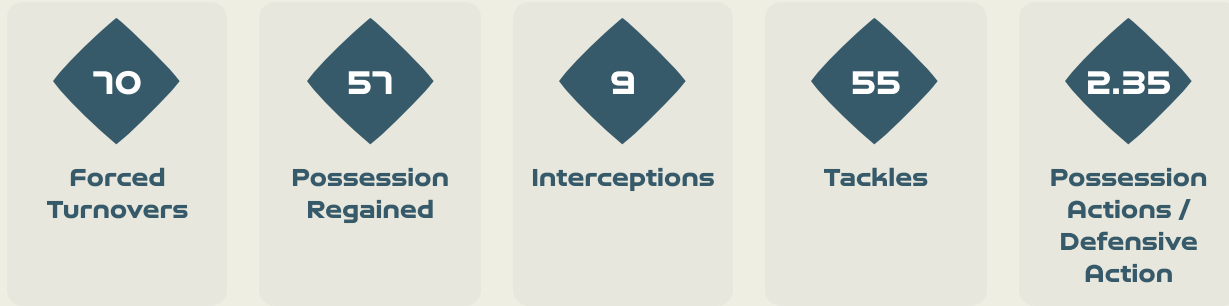


Panama v Jamaica

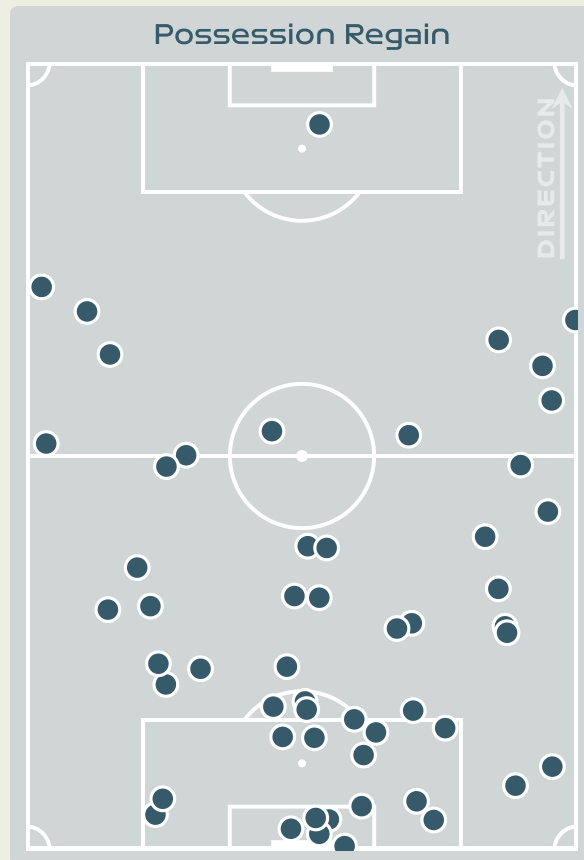
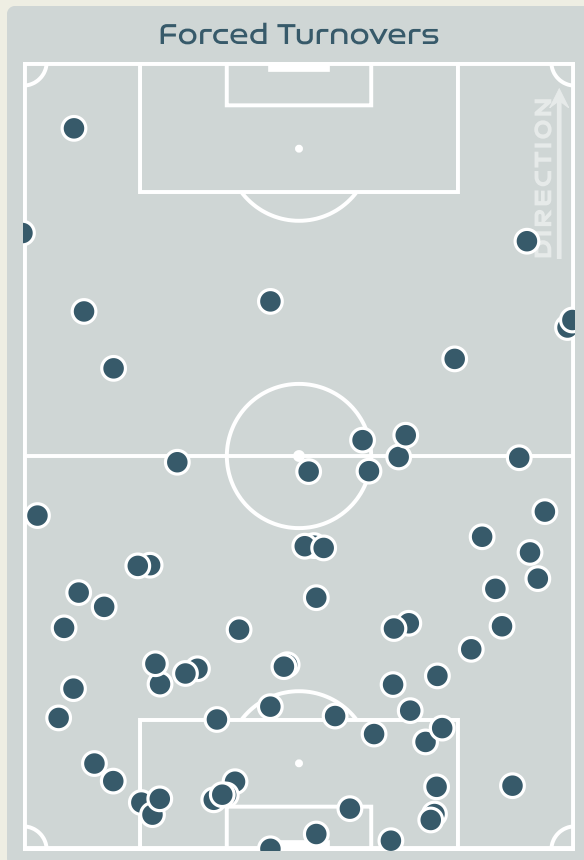
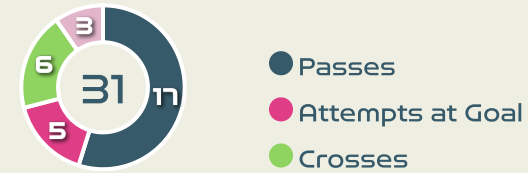




# Defensive Actions



## Blocks



## Possession Contests



## Most Possession Regains



#	Player	Total Possession Regains
12	BAILEY Yenith	8
3	NATIS Wendy	6
4	CASTILLO Katherine	8
5	PINZON Yomira	6
6	SALAZAR Deysire	4
7	CEDENO Emily	2
8	GONZALEZ Schiandra	2
10	COX Marta	4
13	TANNER Riley	5
19	CEDENO Lineth	4
23	BALTRIP-REYES Carina	2
2	JAEN Hilary	0
9	RILEY Karla	1
14	MONTENEGRO Carmen	1
20	QUINTERO Aldrith	4



# Defensive Actions

**87**

Forced Turnovers

**58**

Possession Regained

**14**

Interceptions

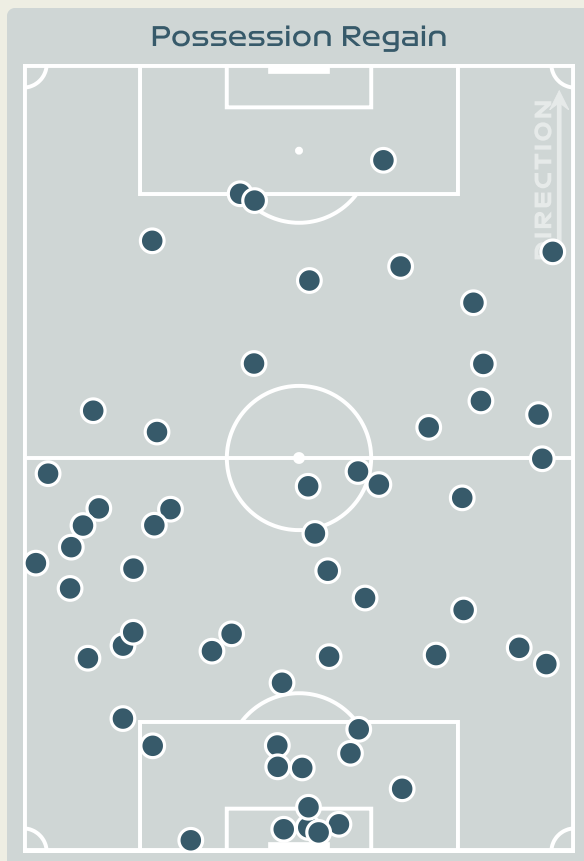
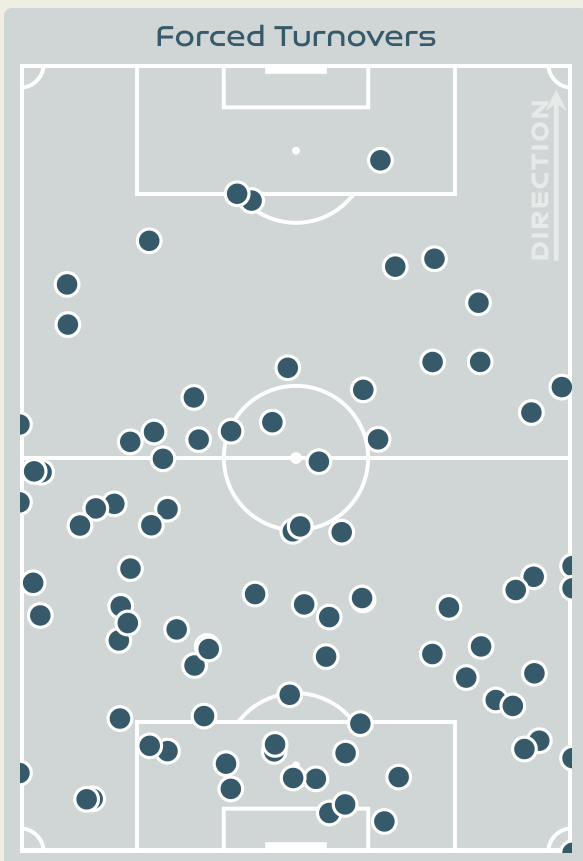
**24**

Tackles

**2.89**

Possession Actions / Defensive Action

## Blocks



## Possession Contests



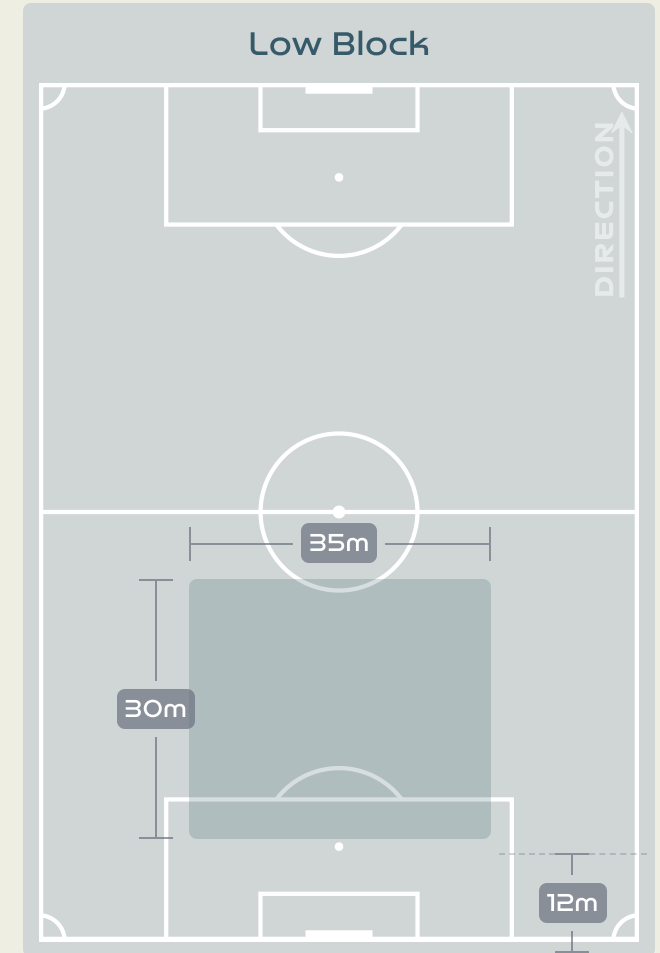
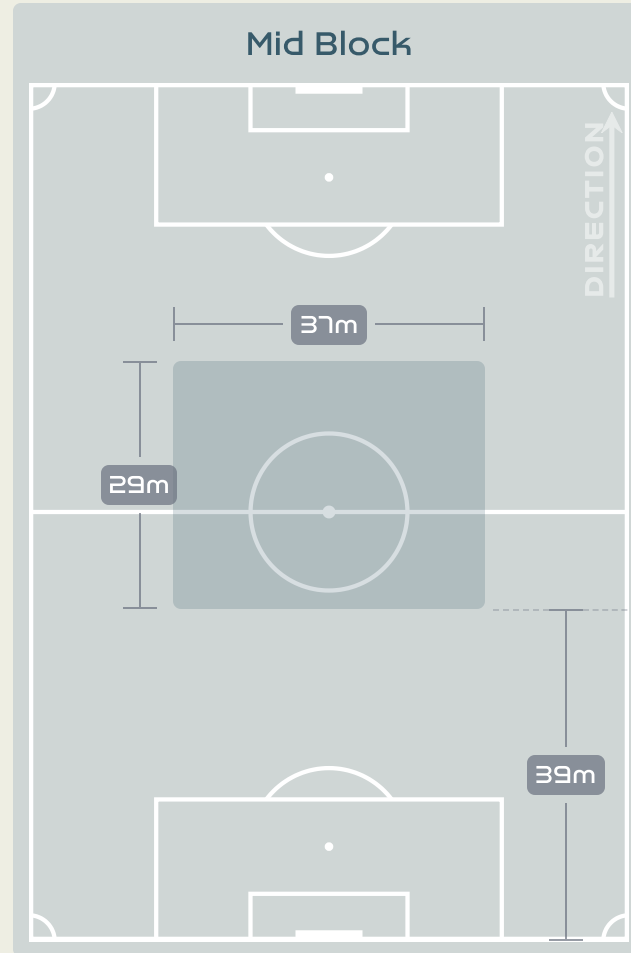
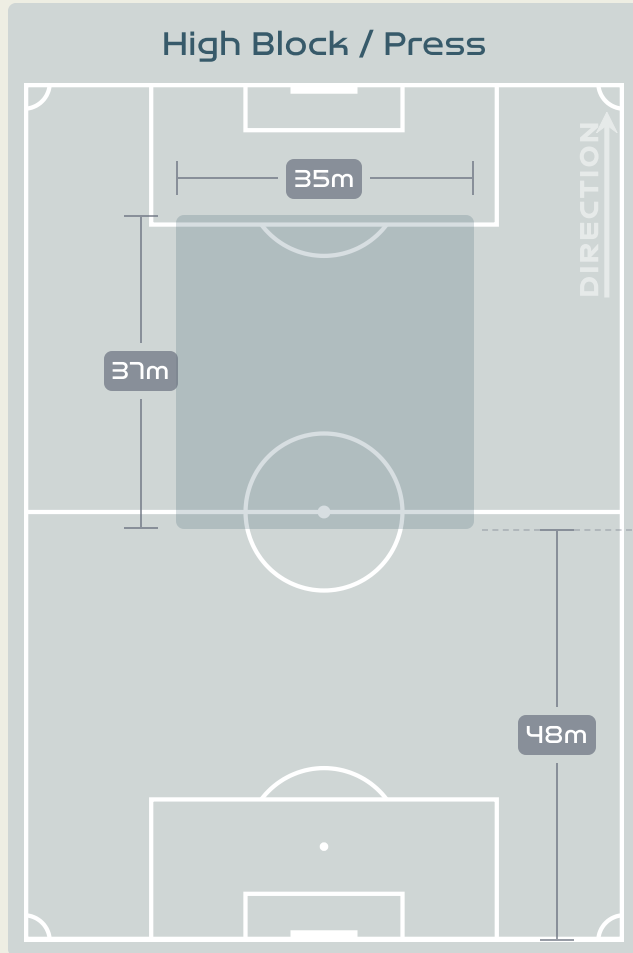
## Most Possession Regains

**9**

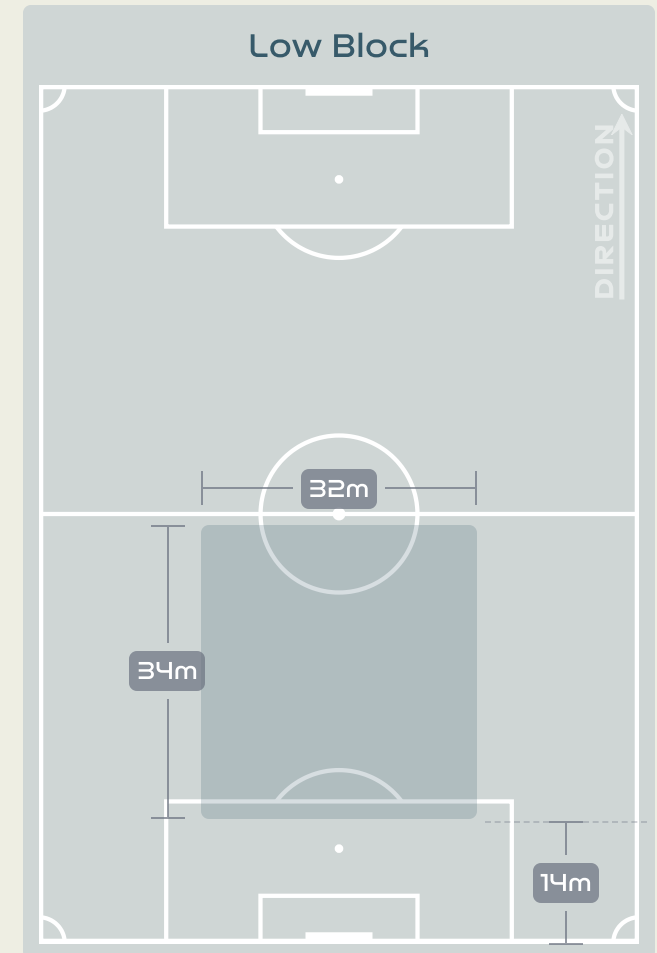
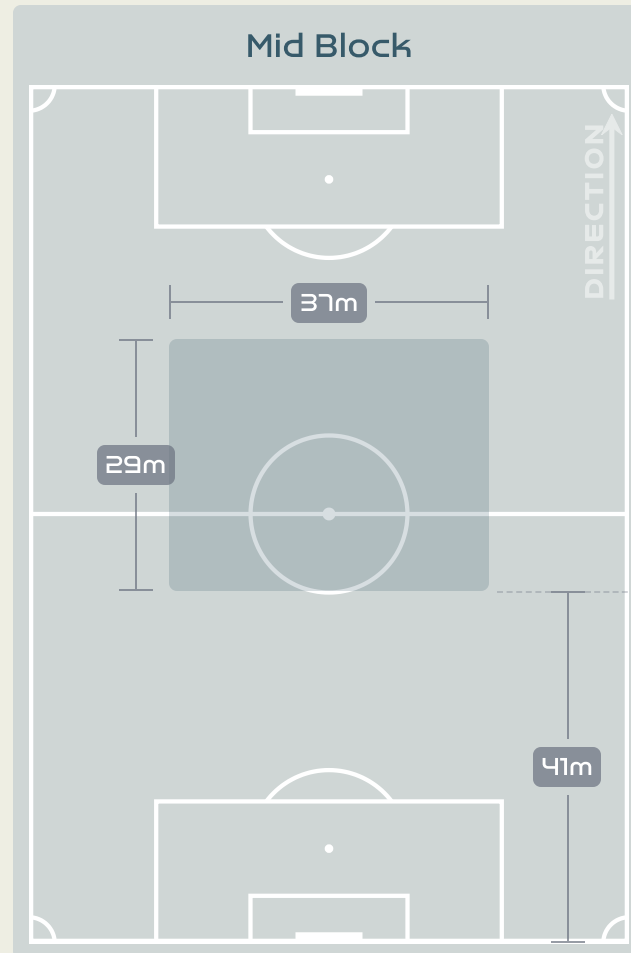
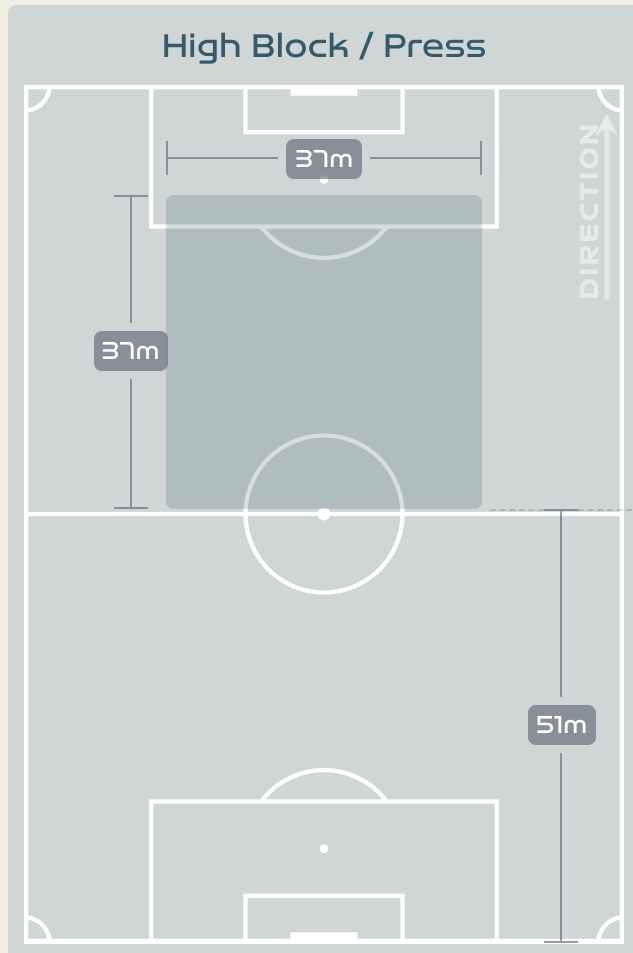
**SAMPSON Vyan**  
DEFENSIVE MIDFIELD CENTRE

#	Player	Total Possession Regains
13	SPENCER Rebecca	7
3	SAMPSON Vyan	9
4	SWABY Chantelle	5
8	SPENCE Drew	6
10	BROWN Jody	0
14	BLACKWOOD Deneisha	8
15	CAMERON Tiffany	4
17	SWABY Allyson	6
18	CARTER Trudi	2
20	PRIMUS Atlanta	4
22	McKENNA Kayla	2
2	WASHINGTON Solai	1
7	McNAMARA Peyton	2
9	SIMMONDS Kameron	1
19	WILTSHIRE Tiernny	0
21	MATTHEWS Cheyna	1

# Defensive Line Height & Team Length



# Defensive Line Height & Team Length

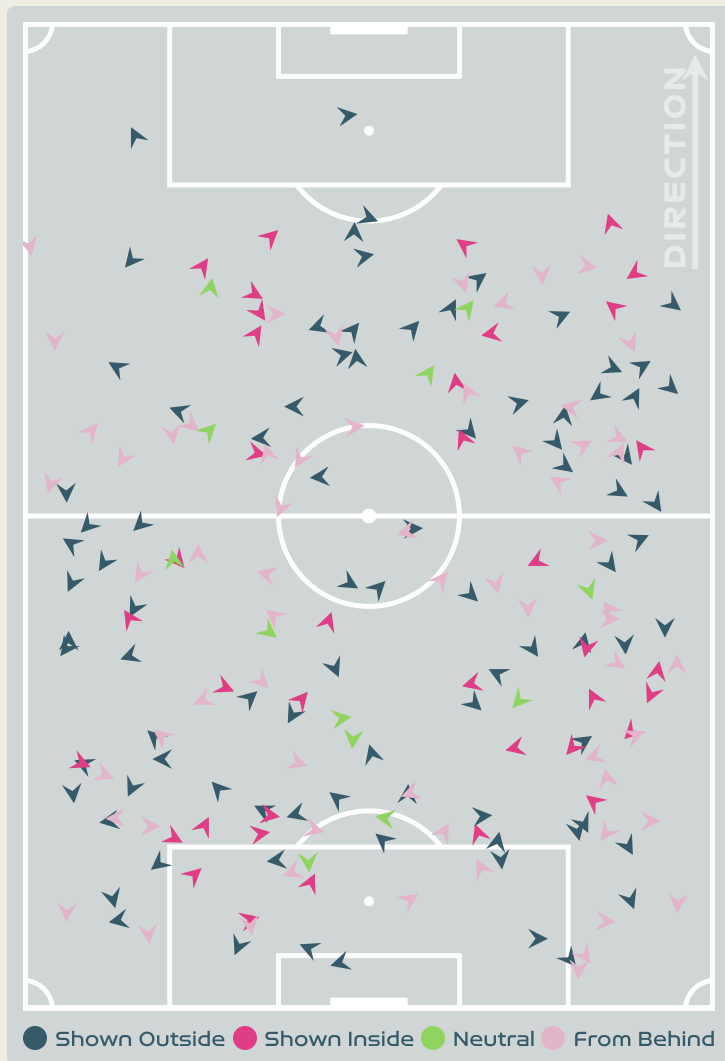


# Defensive Pressure



Panama

Jamaica



201	Total Pressures	198
70	Direct Pressures	54
1.53s	Avg Pressure Duration	1.35s
70	Forced Turnovers	87
8.75s	Ball Recovery Time	8.24s
59	Pushing on into Pressing	77
144	Pushing on	189
38	Pressing Direction Inside	31
88	Pressing Direction Outside	83

**Most Direct Pressures**

**8**

**SALAZAR Deyshire**  
RIGHT CENTRE MIDFIELD

**Most Direct Pressures**

**9**

**BLACKWOOD Deneisha**  
LEFT BACK





# GOALKEEPING



Panama v Jamaica

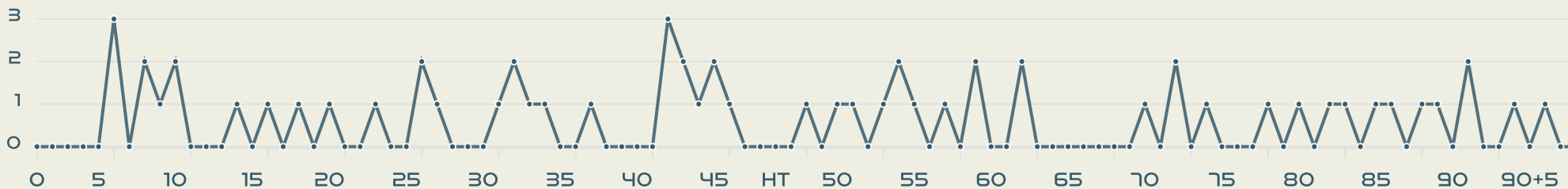


# Goalkeeping Involvement



Panama

### Panama GK Involvement Timeline



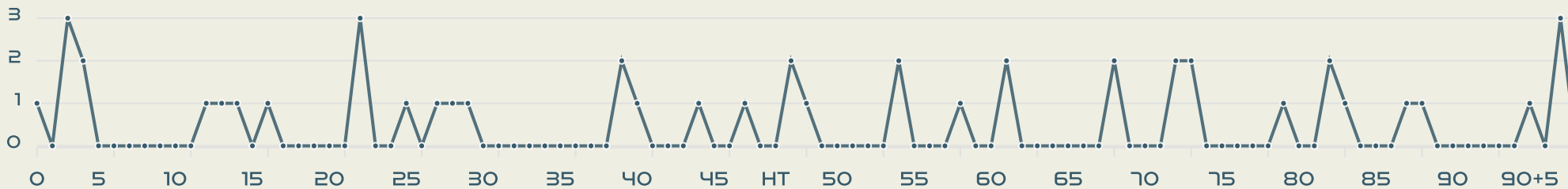
59

Total Involvements



Jamaica

### Jamaica GK Involvement Timeline

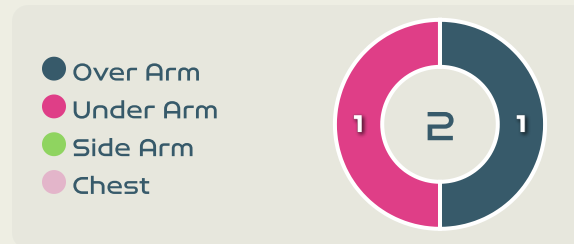
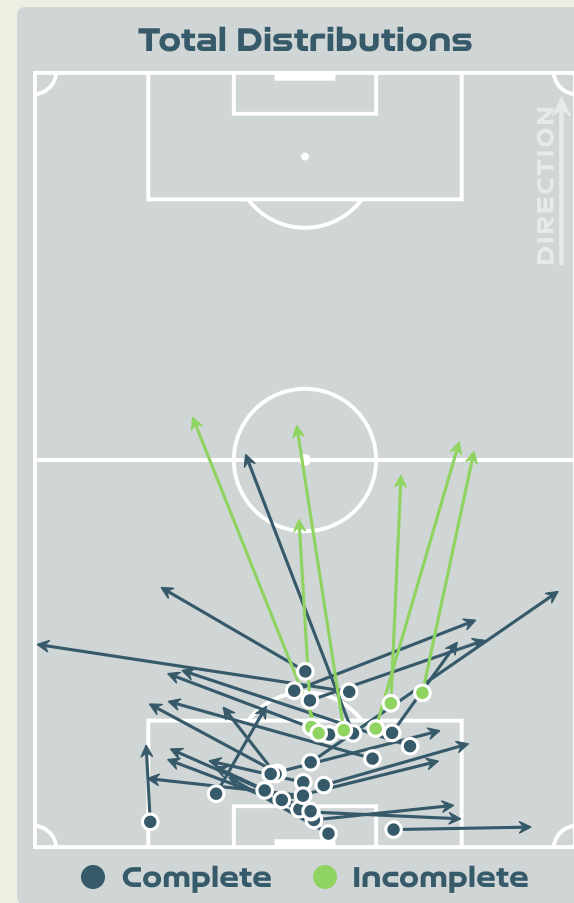
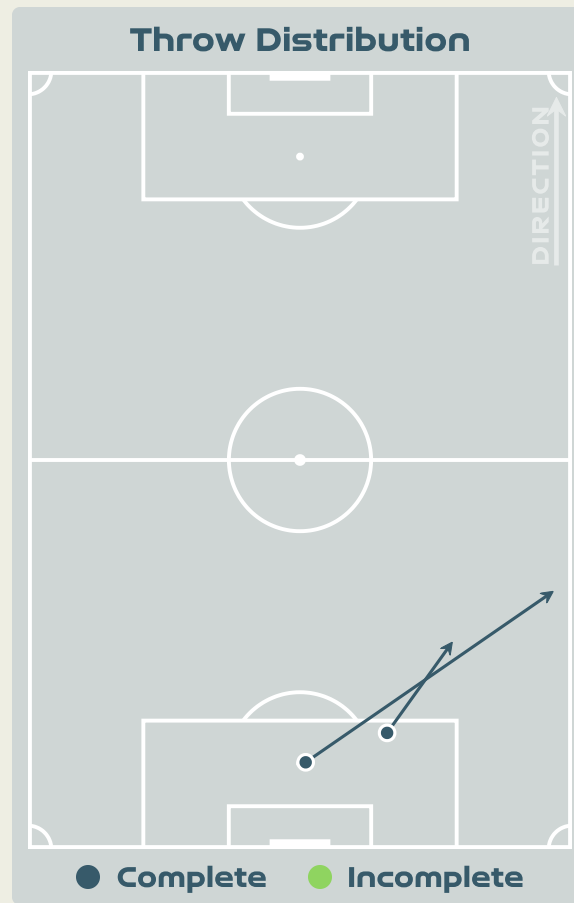
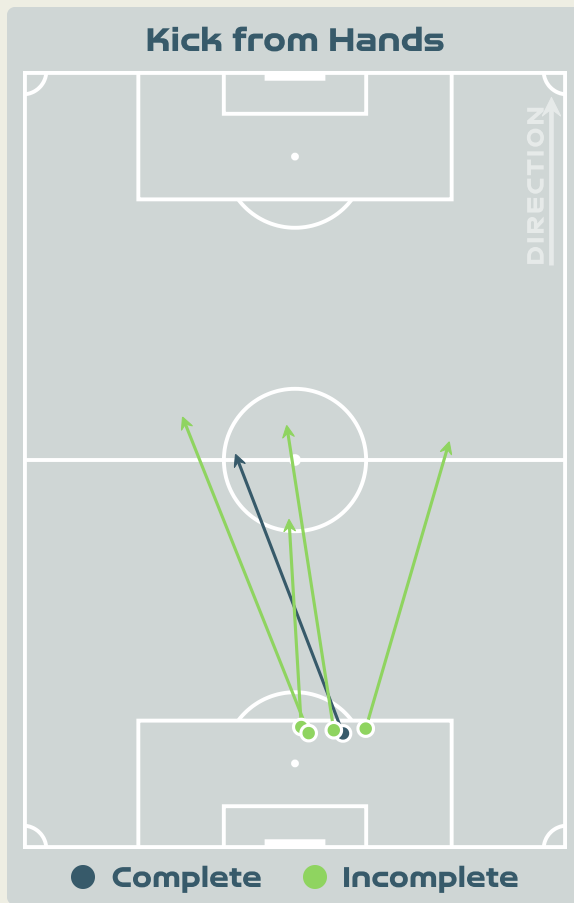
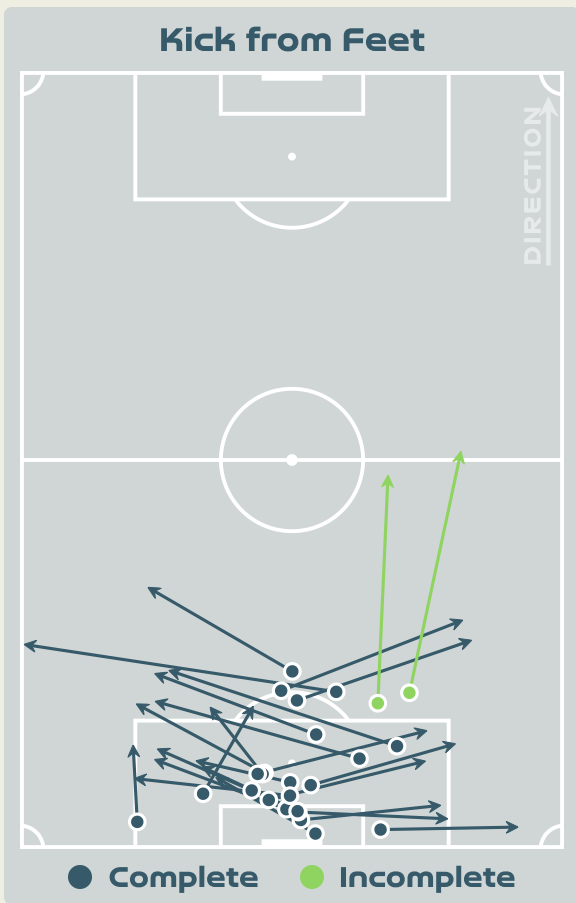


47

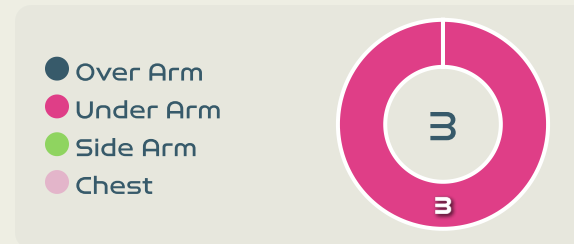
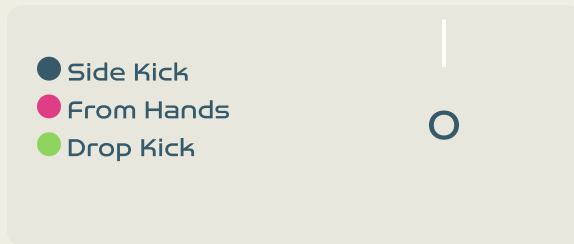
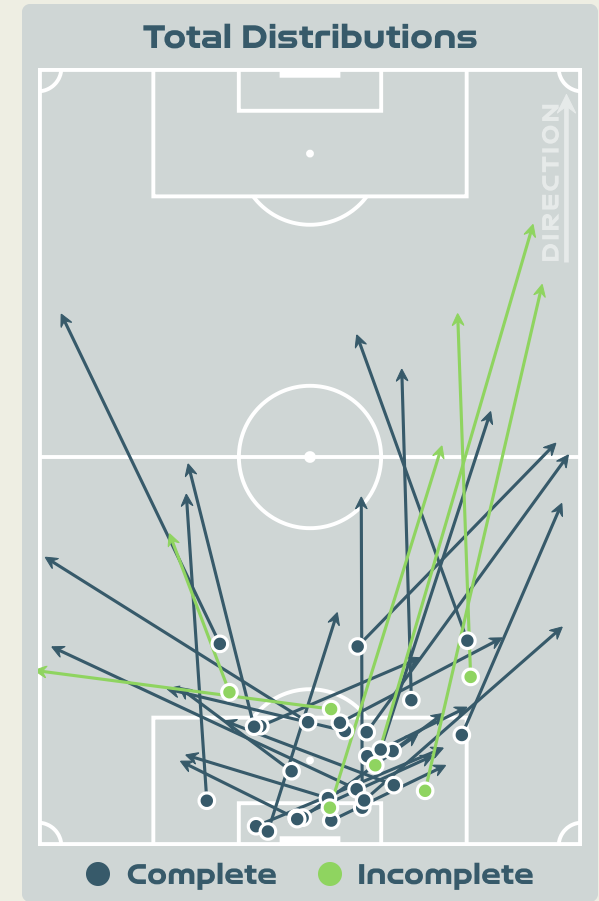
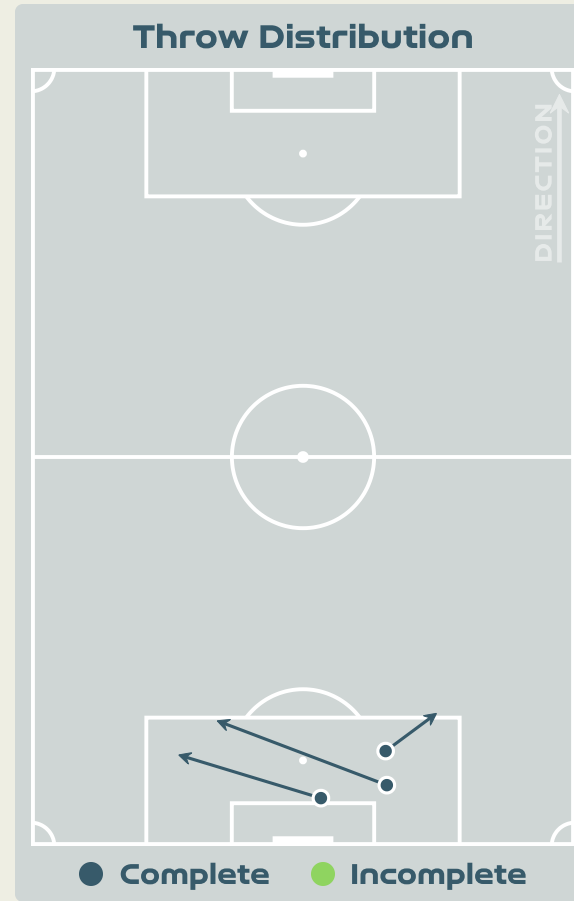
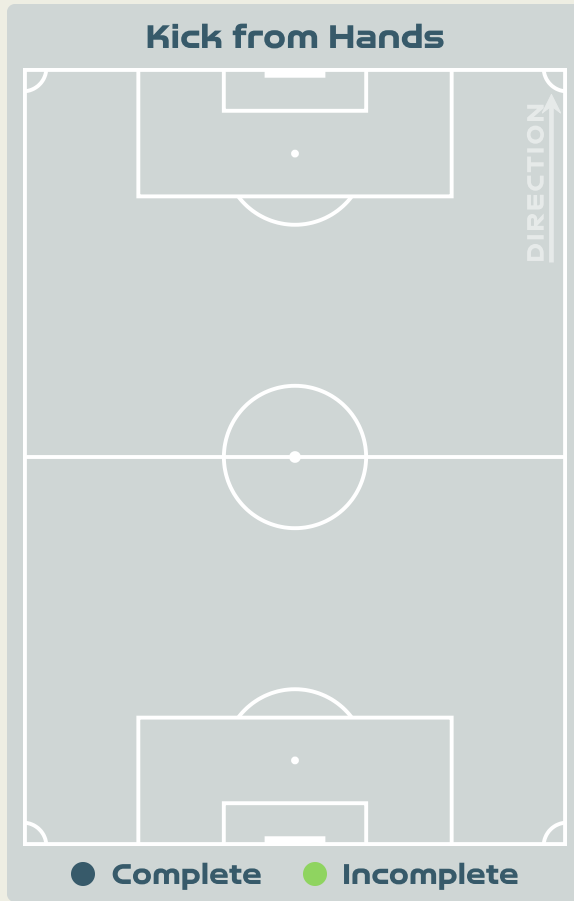
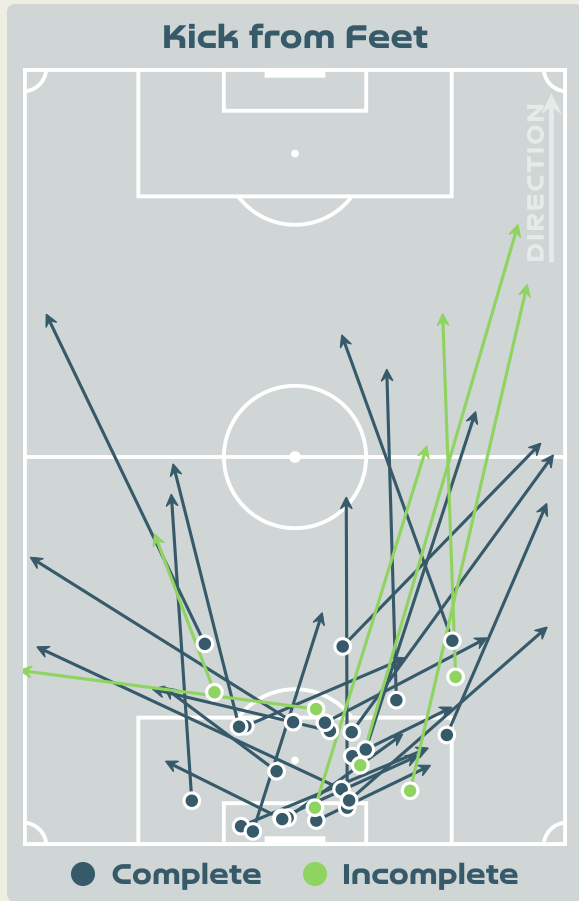
Total Involvements



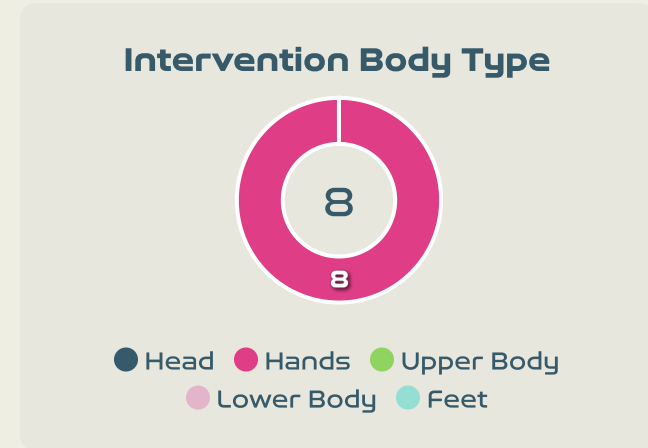
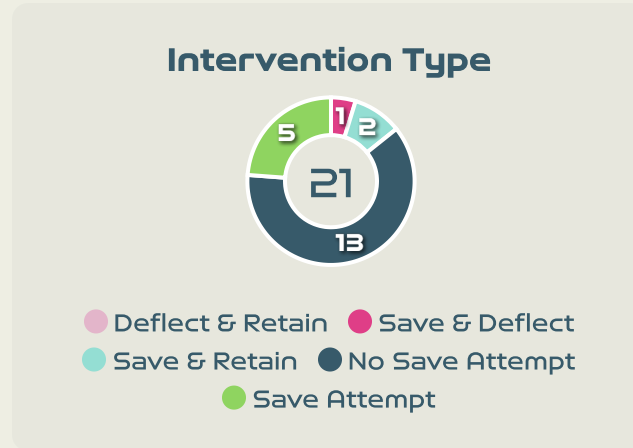
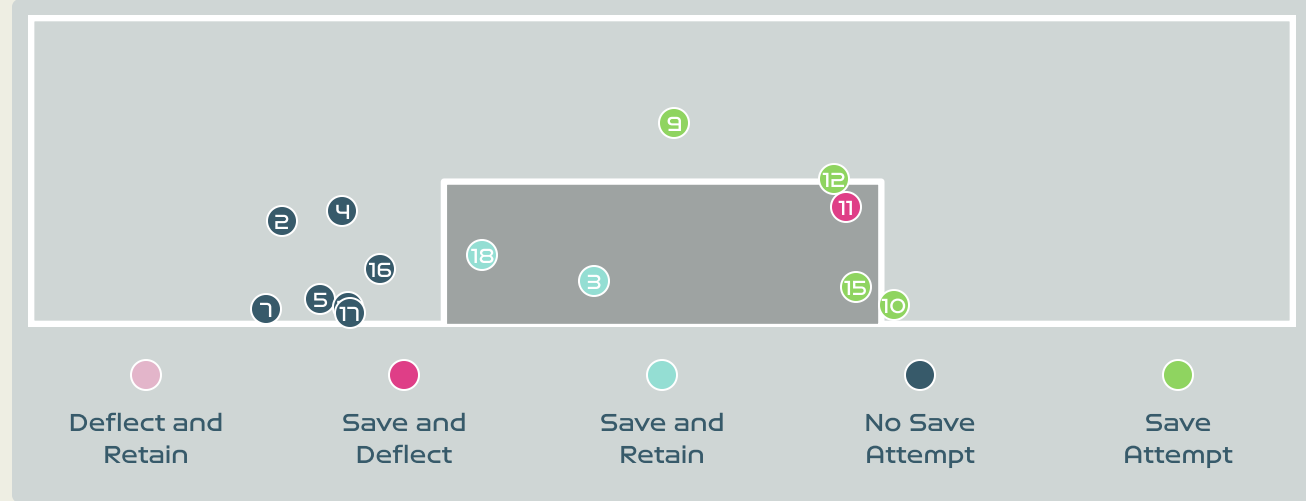
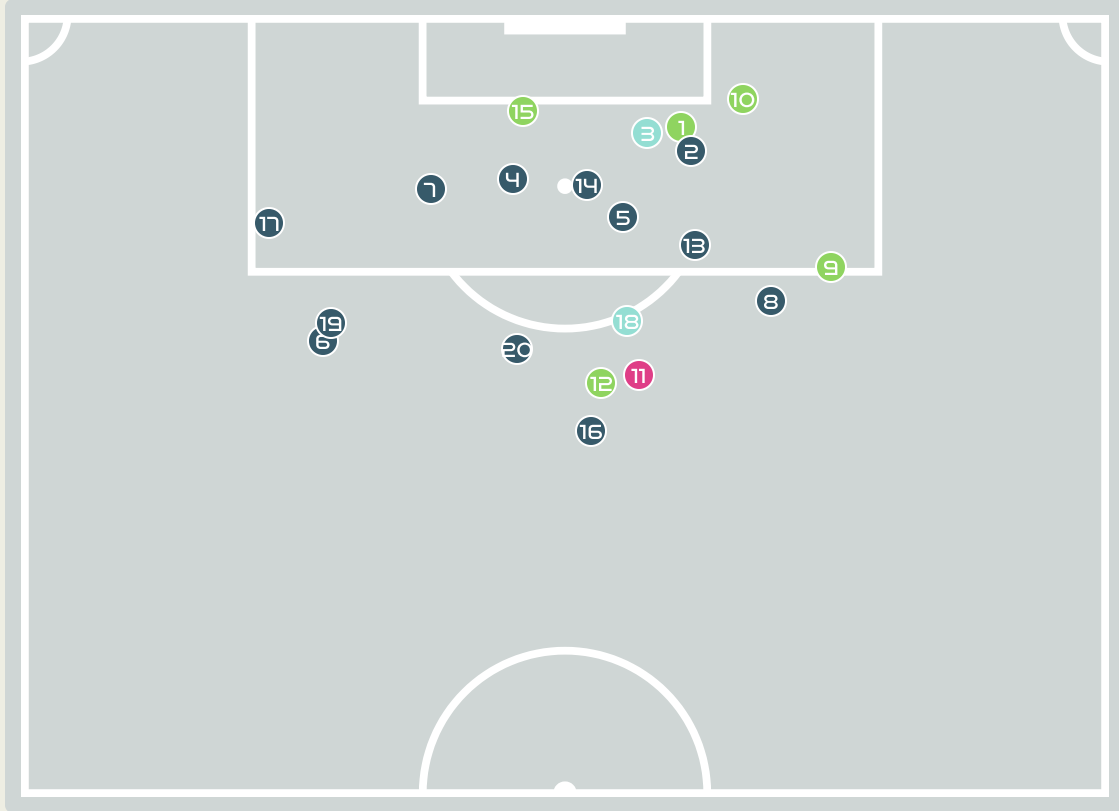
# Goalkeeping Distribution



# Goalkeeping Distribution



# Goal Prevention



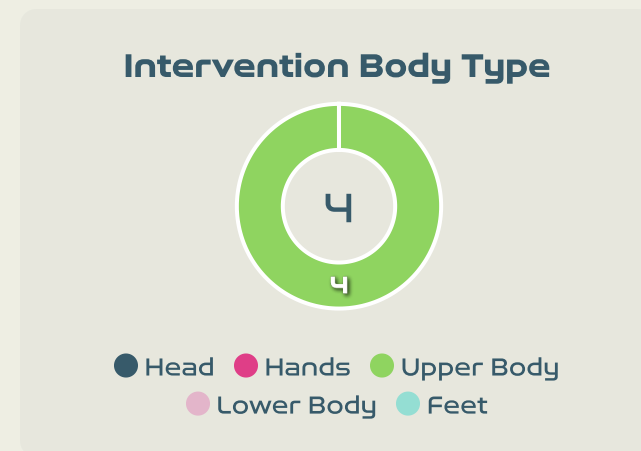
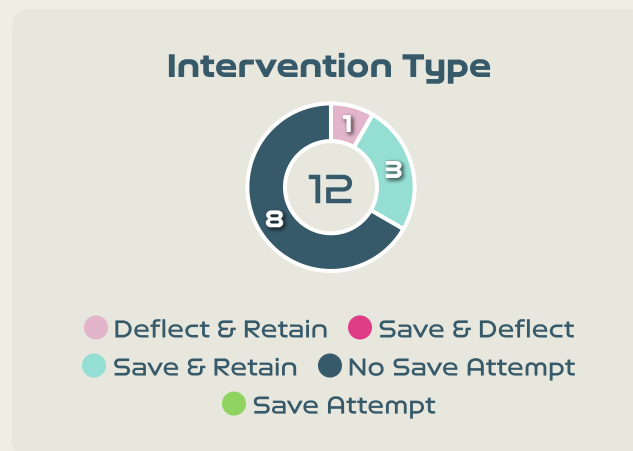
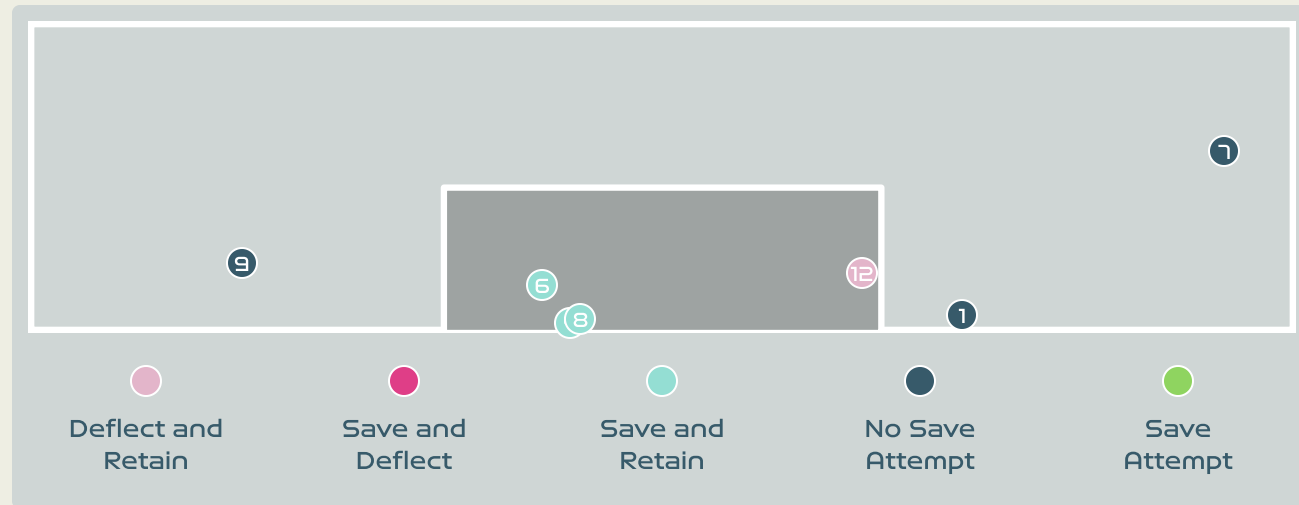
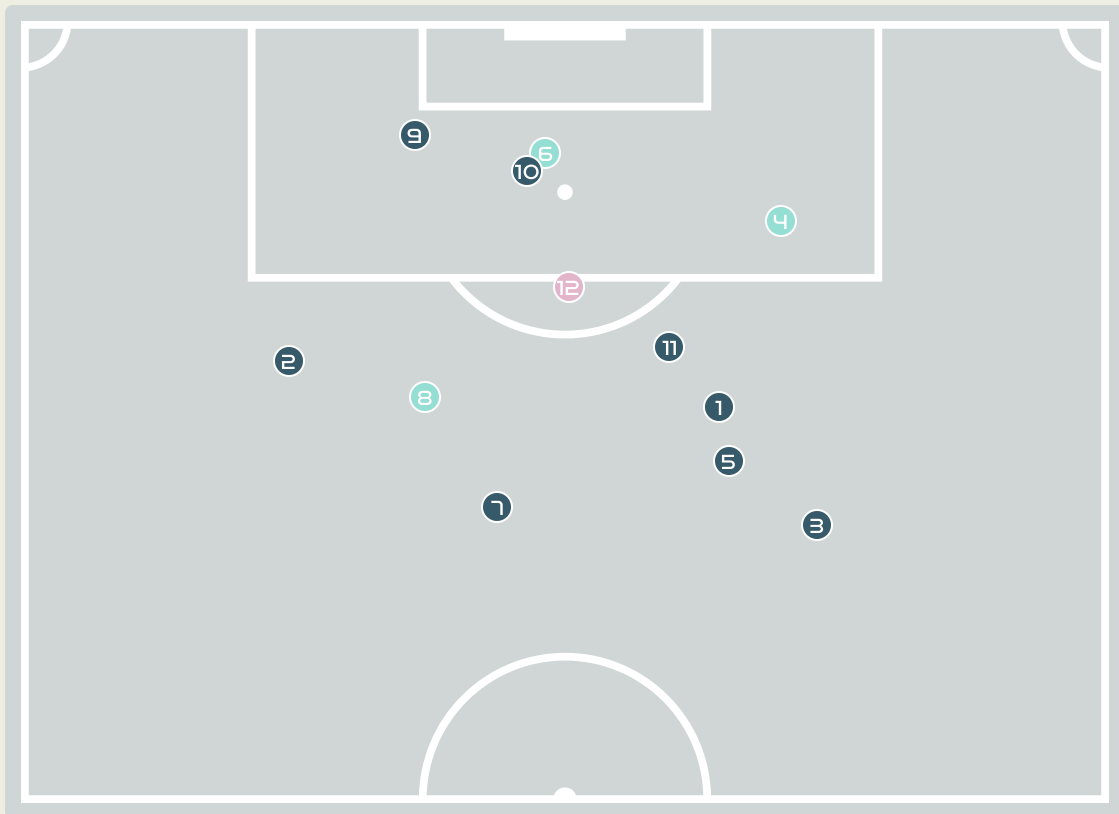
**21**  
Total Attempts on Goal Faced

**75**  
Save %

Total Attempts on Goal Faced	Total Goal Interventions	Save & Retain	Deflect & Retain	Save & Deflect	Save Attempt	No Save Attempt
21	3	2	0	1	5	13



# Goal Prevention

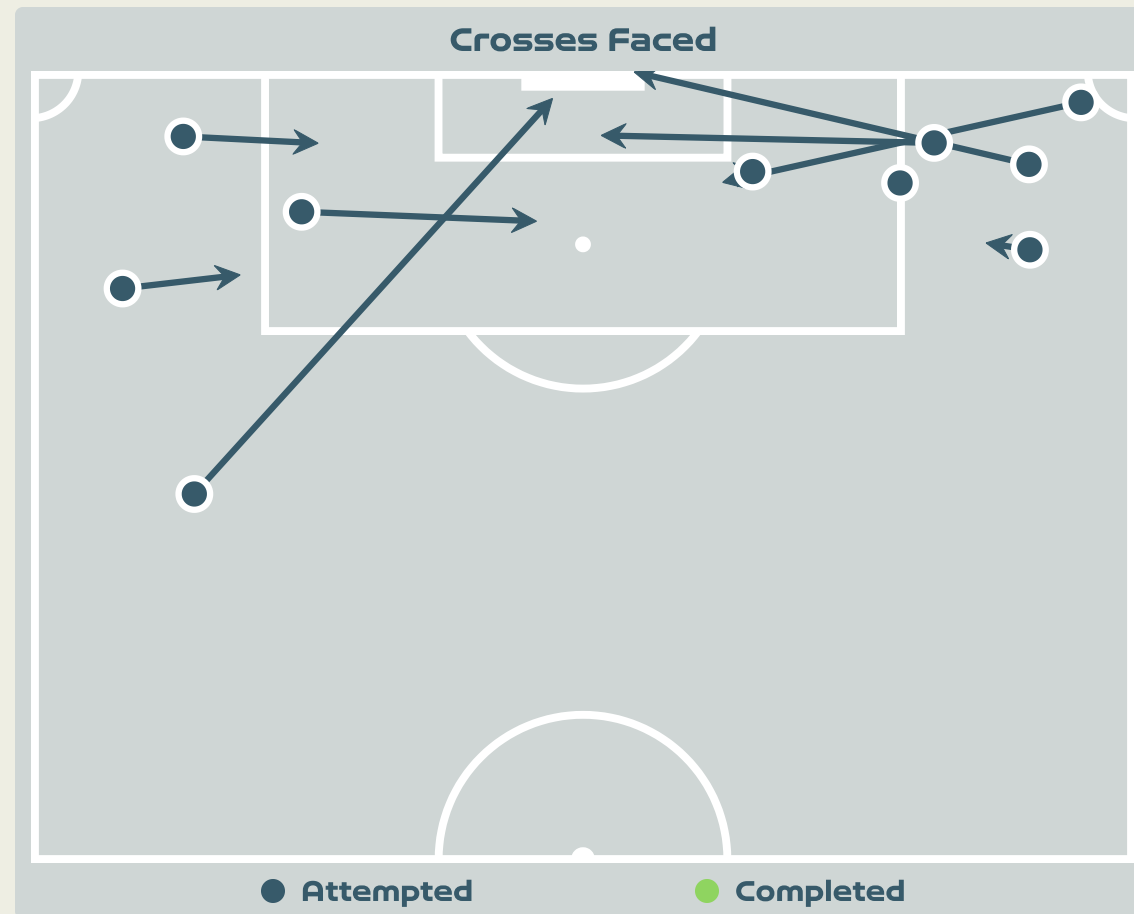
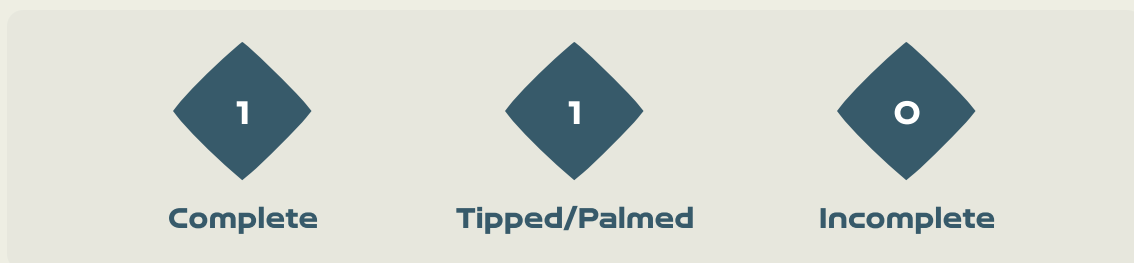


**12**  
Total Attempts on Goal Faced

**100**  
Save %

Total Attempts on Goal Faced	Total Goal Interventions	Save & Retain	Deflect & Retain	Save & Deflect	Save Attempt	No Save Attempt
12	3	3	0	0	0	8

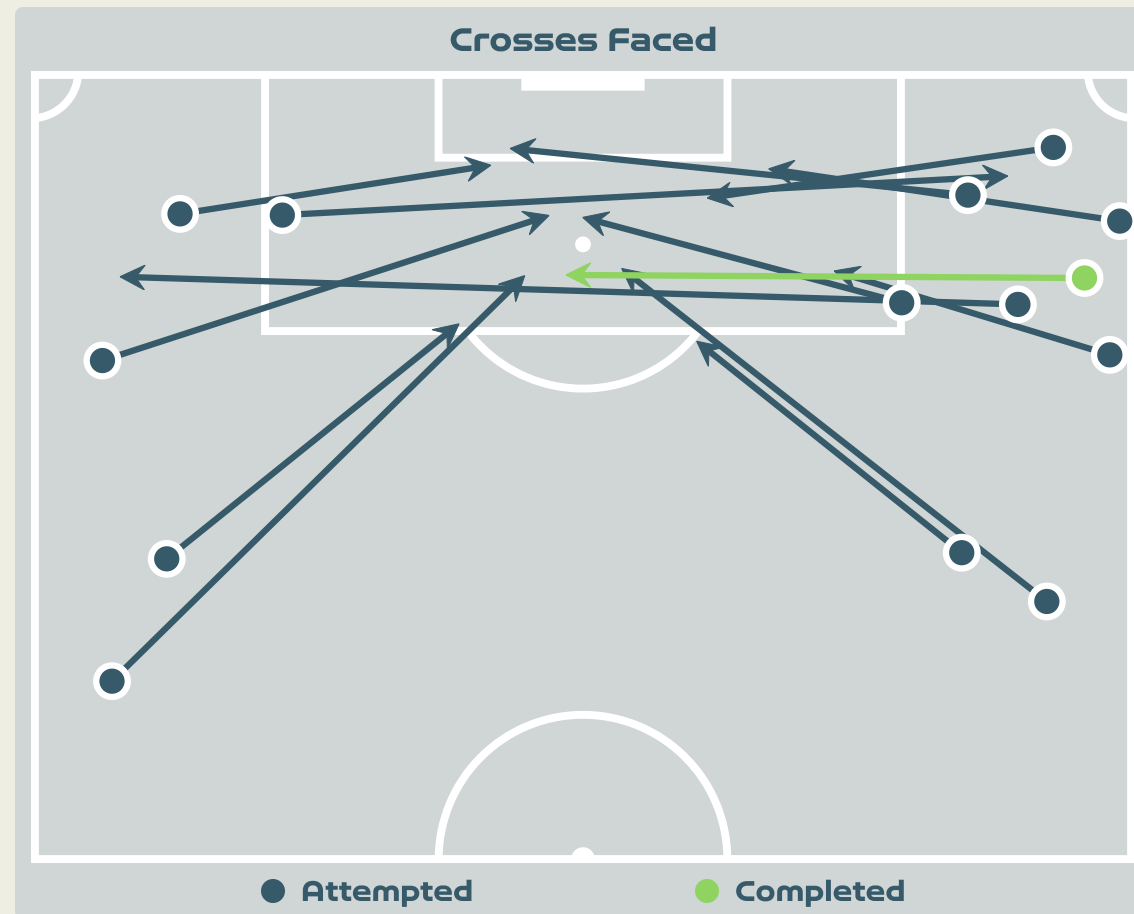
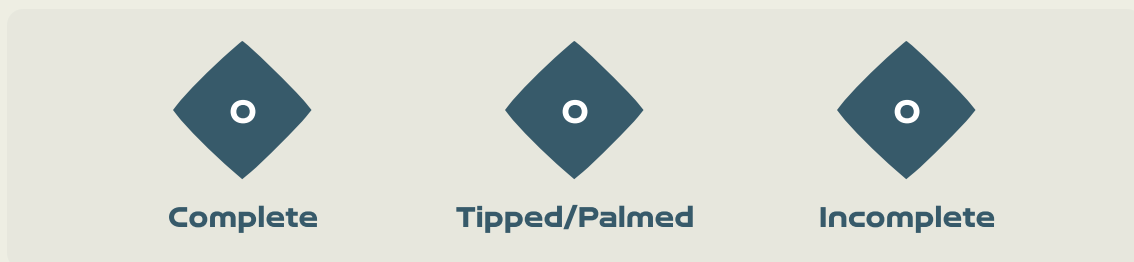
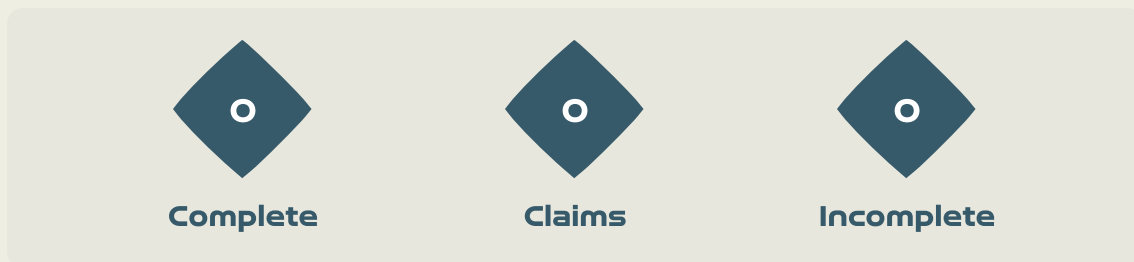
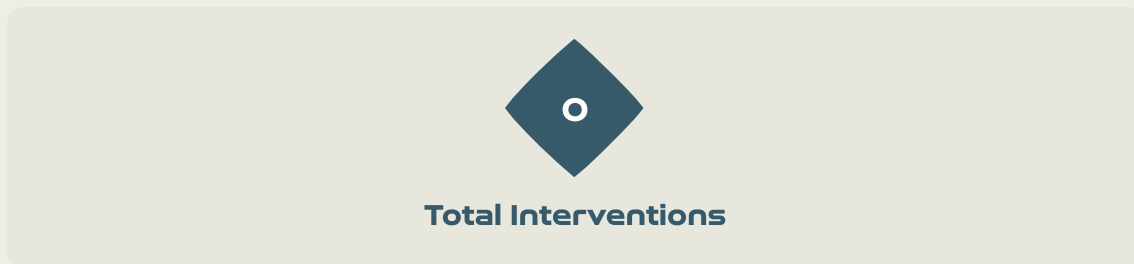
# Aerial Control



**Delivery Types Faced**

Total	In Swing	Out Swing	Driven	Lofted	Cutback	Push
18	2	2	2	9	0	3

# Aerial Control



Delivery Types Faced

Total	In Swing	Out Swing	Driven	Lofted	Cutback	Push
22	6	3	2	10	0	1



# SET PLAYS



Panama v Jamaica





# Set Plays - Corners

44

Total Set Plays

18

Total Free Kicks

0

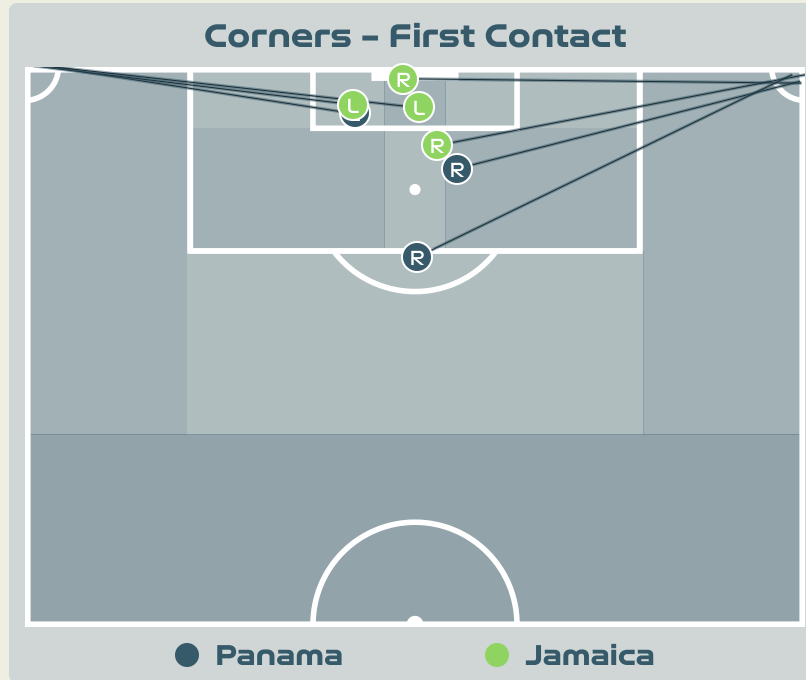
Total Penalties

7

Total Corners

19

Total Throw Ins



Delivery Type	From Left Side	From Right Side	Total
Direct to Area	3	3	6
Short	0	1	1
Edge of Penalty Area	0	0	0

Delivery Style	Total
Inswing	2
Outswing	0
Driven	0

Free Kicks	
Type	Total
Direct	15
Direct (on target)	0
Direct (off target)	0
Indirect	3

## First Contacts on Panama Crosses

3

By Panama

4

By Jamaica

Top 5 Player First Contacts		
Player	Team	Total
PINZON Yomira	Panama	1
COX Marta	Panama	1
CEDENO Lineth	Panama	1
SPENCER Rebecca	Jamaica	1
SWABY Chantelle	Jamaica	1





# Set Plays - Corners

50

Total Set Plays

10

Total Free Kicks

0

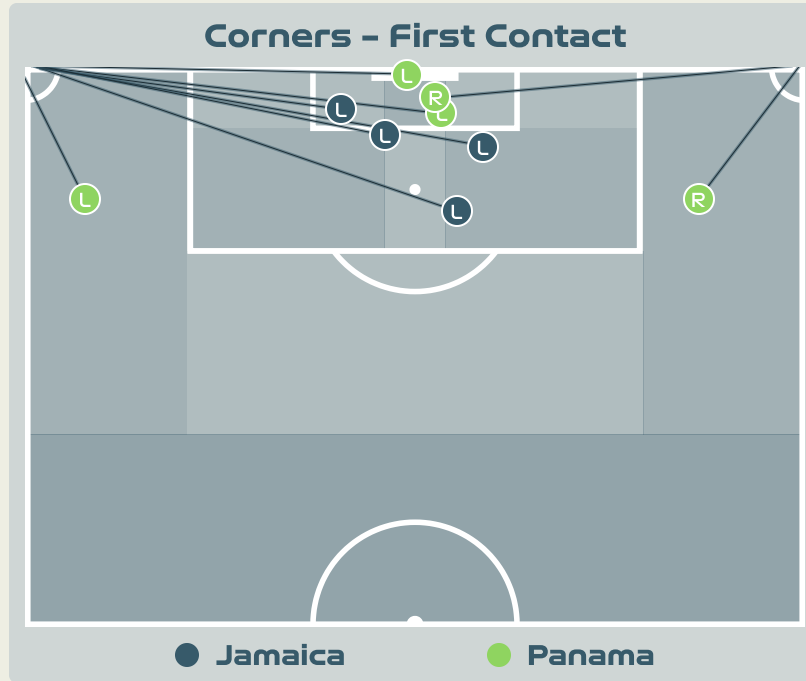
Total Penalties

9

Total Corners

31

Total Throw Ins



Delivery Type	From Left Side	From Right Side	Total
Direct to Area	6	1	7
Short	1	1	2
Edge of Penalty Area	0	0	0

Delivery Style	Total
Inswing	1
Outswing	0
Driven	0

Free Kicks	
Type	Total
Direct	8
Direct (on target)	0
Direct (off target)	1
Indirect	2

## First Contacts on Jamaica Crosses

4

By Jamaica

5

By Panama

Top 5 Player First Contacts		
Player	Team	Total
PRIMUS Atlanta	Jamaica	2
PINZON Yomira	Panama	2
CEDEÑO Emily	Panama	2
SWABY Chantelle	Jamaica	1
SWABY Allyson	Jamaica	1



# INDIVIDUAL DATA IN POSSESSION



Panama v Jamaica



## In Possession - Distributions



#	Player	Passes Attempted	Passes Completed	Pass Completion %	Switches of Play	Crosses Attempted	Crosses Completed	Line Breaks Attempted	Line Breaks Completed	Line Break Completion %	Ball Progressions	Take Ons	Step Ins	Attempts at Goal	Goals
12	BAILEY Yenith	32	26	81%	0	0	0	4	2	50%	0	0	0	0	0
3	NATIS Wendy	37	25	68%	0	0	0	19	10	52%	0	0	0	1	0
4	CASTILLO Katherine	40	34	85%	0	3	1	14	9	64%	1	0	1	0	0
5	PINZON Yomira	42	32	76%	1	0	0	17	11	64%	3	1	2	0	0
6	SALAZAR Deysire	16	11	69%	0	0	0	7	4	57%	2	0	2	0	0
7	CEDENO Emily	27	15	56%	0	2	0	4	4	100%	5	2	3	2	0
8	GONZALEZ Schiandra	27	24	89%	0	0	0	5	5	100%	0	0	0	3	0
10	COX Marta	41	22	54%	3	13	3	23	9	39%	3	1	2	5	0
13	TANNER Riley	11	7	64%	1	2	0	1	1	100%	4	3	1	0	0
19	CEDENO Lineth	8	8	100%	0	0	0	2	2	100%	1	0	1	0	0
23	BALTRIP-REYES Carina	38	30	79%	0	1	0	14	8	57%	0	0	0	0	0
2	JAEN Hilary	5	5	100%	0	1	0	3	2	66%	0	0	0	0	0
9	RILEY Karla	12	9	75%	0	0	0	3	3	100%	0	0	0	0	0
14	MONTENEGRO Carmen	4	4	100%	0	0	0	1	1	100%	0	0	0	0	0
20	QUINTERO Aldrith	26	19	73%	0	0	0	11	8	72%	1	1	0	1	0

# In Possession - Offers & Receptions



			Offer movement types						
#	Player	Total Offers	In Front	In Between	Out to In	In to Out	In Behind	No Movement	Offers Received
12	BAILEY Yenith	10	0	0	0	0	0	10	6
3	NATIS Wendy	17	4	0	0	0	0	13	7
4	CASTILLO Katherine	25	9	1	0	0	4	11	11
5	PINZON Yomira	3	2	0	0	0	0	1	2
6	SALAZAR Deysire	10	5	2	2	0	0	1	4
7	CEDENO Emily	49	1	5	5	2	22	14	16
8	GONZALEZ Schiandra	16	8	6	0	0	1	1	5
10	COX Marta	51	9	15	2	11	4	10	12
13	TANNER Riley	34	1	5	1	0	15	12	4
19	CEDENO Lineth	14	0	5	0	0	9	0	3
23	BALTRIP-REYES Carina	10	3	0	1	0	2	4	4
2	JAEN Hilary	5	0	0	0	0	1	4	3
9	RILEY Karla	8	1	1	0	0	6	0	2
14	MONTENEGRO Carmen	3	0	1	0	0	2	0	0
20	QUINTERO Aldrith	23	11	8	0	0	4	0	10

## In Possession - Distributions



#	Player	Passes Attempted	Passes Completed	Pass Completion %	Switches of Play	Crosses Attempted	Crosses Completed	Line Breaks Attempted	Line Breaks Completed	Line Break Completion %	Ball Progressions	Take Ons	Step Ins	Attempts at Goal	Goals
13	SPENCER Rebecca	33	27	82%	0	0	0	17	14	82%	0	0	0	0	0
3	SAMPSON Vyan	29	21	72%	0	0	0	10	7	70%	0	0	0	2	0
4	SWABY Chantelle	35	29	83%	0	0	0	15	14	93%	6	0	6	1	0
8	SPENCE Drew	37	27	73%	0	0	0	22	17	77%	3	1	2	5	0
10	BROWN Jody	28	22	79%	1	1	0	9	5	55%	9	5	4	0	0
14	BLACKWOOD Deneisha	43	31	72%	0	5	1	18	9	50%	0	0	0	1	0
15	CAMERON Tiffany	35	29	83%	0	2	0	14	9	64%	3	1	2	2	0
17	SWABY Allyson	32	26	81%	0	0	0	8	4	50%	0	0	0	1	1
18	CARTER Trudi	10	8	80%	0	7	4	2	1	50%	3	3	0	2	0
20	PRIMUS Atlanta	21	18	86%	0	1	0	3	1	33%	1	1	0	4	0
22	McKENNA Kayla	14	10	71%	0	1	1	2	1	50%	1	1	0	0	0
2	WASHINGTON Solai	3	2	67%	0	0	0	1	0	0%	0	0	0	0	0
7	McNAMARA Peyton	1	1	100%	0	0	0	0	0	0%	1	0	1	1	0
9	SIMMONDS Kameron	1	1	100%	0	1	0	0	0	0%	1	0	1	0	0
19	WILTSHIRE Tierhny	2	1	50%	0	0	0	2	1	50%	1	0	1	0	0
21	MATTHEWS Cheyna	7	3	43%	0	0	0	2	1	50%	1	0	1	1	0

# In Possession - Offers & Receptions



			Offer movement types						
#	Player	Total Offers	In Front	In Between	Out to In	In to Out	In Behind	No Movement	Offers Received
13	SPENCER Rebecca	10	0	0	0	0	0	10	8
3	SAMPSON Vyan	14	10	2	0	0	0	2	4
4	SWABY Chantelle	2	0	0	0	0	1	1	0
8	SPENCE Drew	46	13	24	2	2	0	5	11
10	BROWN Jody	29	1	8	2	1	10	7	13
14	BLACKWOOD Deneisha	25	7	0	1	0	5	12	14
15	CAMERON Tiffany	10	4	0	0	0	3	3	5
17	SWABY Allyson	17	3	0	0	0	0	14	6
18	CARTER Trudi	20	3	2	0	1	9	5	9
20	PRIMUS Atlanta	35	4	25	3	0	3	0	8
22	McKENNA Kayla	27	0	12	0	3	11	1	6
2	WASHINGTON Solai	0	0	0	0	0	0	0	0
7	McNAMARA Peyton	2	0	0	1	0	0	1	2
9	SIMMONDS Kameron	7	0	3	0	0	2	2	1
19	WILTSHIRE Tiernny	1	0	0	0	0	1	0	0
21	MATTHEWS Cheyna	9	0	1	0	1	5	2	4



# INDIVIDUAL DATA OUT OF POSSESSION



Panama v Jamaica



## Out of Possession



#	Player	Tackles Made / Won	Blocks	Interceptions	Pressing Direct	Pressing Indirect	Duels Won - Aerial	Duels Won - Physical	Possession Contests won	Clearances	Loose Ball Receptions	Pushing On	Pushing On into Pressing	Possession Regains	Possession Interrupted
12	BAILEY Yenith	1 / 0	0	0	0	0	0	0	0	1	4	0	0	8	0
3	NATIS Wendy	8 / 1	8	1	7	7	1	0	3	7	6	19	5	6	9
4	CASTILLO Katherine	6 / 2	6	3	7	5	0	0	0	9	8	14	4	8	8
5	PINZON Yomira	3 / 1	5	2	4	3	2	0	2	10	5	3	1	6	10
6	SALAZAR Deysire	8 / 2	2	1	8	10	0	0	0	1	10	15	6	4	4
7	CEDENO Emily	5 / 1	2	0	8	12	0	0	2	0	10	6	2	2	1
8	GONZALEZ Schiandra	4 / 1	0	0	4	12	0	0	2	3	14	12	5	2	3
10	COX Marta	4 / 2	2	0	6	15	1	0	1	1	13	19	12	4	1
13	TANNER Riley	4 / 1	2	0	6	12	6	0	6	1	5	15	6	5	1
19	CEDENO Lineth	1 / 1	3	0	1	14	3	0	4	2	3	12	7	4	1
23	BALTRIP-REYES Carina	5 / 0	2	0	8	11	2	0	2	5	6	10	6	2	5
2	JAEN Hilary	0 / 0	0	0	0	2	0	0	0	0	0	0	0	0	0
9	RILEY Karla	1 / 1	0	0	1	16	1	0	2	0	1	7	3	1	0
14	MONTENEGRO Carmen	1 / 0	3	1	4	4	1	0	1	0	2	1	0	1	4
20	QUINTERO Aldrith	4 / 2	0	1	6	8	1	0	1	1	5	11	2	4	2



## Out of Possession



#	Player	Tackles Made / Won	Blocks	Interceptions	Pressing Direct	Pressing Indirect	Duels Won - Aerial	Duels Won - Physical	Possession Contests won	Clearances	Loose Ball Receptions	Pushing On	Pushing On into Pressing	Possession Regains	Possession Interrupted
13	SPENCER Rebecca	0 / 0	0	0	0	0	0	0	0	0	1	0	0	7	0
3	SAMPSON Vyan	2 / 0	1	4	7	22	3	0	4	7	11	19	8	9	7
4	SWABY Chantelle	4 / 2	4	1	5	5	4	0	4	12	8	9	5	5	12
8	SPENCE Drew	1 / 0	6	0	2	17	1	0	2	5	16	18	7	6	6
10	BROWN Jody	0 / 0	1	0	7	10	1	0	1	0	8	8	5	0	1
14	BLACKWOOD Deneisha	7 / 3	1	2	9	13	2	0	2	4	5	39	12	8	2
15	CAMERON Tiffany	2 / 0	2	1	5	6	0	0	0	12	8	13	4	4	11
17	SWABY Allyson	2 / 1	3	1	7	4	5	0	5	8	4	18	8	6	5
18	CARTER Trudi	2 / 0	3	0	6	13	1	0	1	1	5	13	9	2	2
20	PRIMUS Atlanta	1 / 1	1	3	2	22	5	1	7	1	7	25	4	4	2
22	McKENNA Kayla	0 / 0	2	0	1	13	1	0	1	0	7	13	10	2	1
2	WASHINGTON Solai	1 / 0	1	1	1	5	0	0	0	0	0	4	2	1	1
7	McNAMARA Peyton	0 / 0	0	0	0	5	4	0	4	0	0	6	2	2	0
9	SIMMONDS Kameron	1 / 1	1	0	0	2	0	0	0	0	1	0	0	1	1
19	WILTSHIRE Tierney	0 / 0	1	0	0	0	0	0	0	1	0	2	0	0	1
21	MATTHEWS Cheyna	1 / 0	0	1	2	7	1	0	1	0	2	2	1	1	1



# INDIVIDUAL DATA PHYSICAL



Panama v Jamaica



## Physical Data



#	Player	Total Distance (m)	Zone 1: 0-7 km/h (m)	Zone 2: 7-13km/h (m)	Zone 3: 13-19km/h (m)	Zone 4: 19-23km/h (m)	Zone 5: 23+ km/h (m)	High Speed Runs (Zone 4)	Sprints (Zone 5)	Top Speed (km/h)
12	BAILEY Yenith	3402.4	2496.0	647.8	224.6	34.0	0	30.0	3.0	28.5
3	NATIS Wendy	8335.2	4058.4	2618.1	1321.1	220.9	116.7	121.0	25.0	27.6
4	CASTILLO Katherine	9729.3	3443.2	3313.8	2333.1	477.7	160.5	191.0	39.0	29.6
5	PINZON Yomira	8361.4	3143.1	3561.1	1373.8	251.7	31.8	132.0	20.0	24.4
6	SALAZAR Deysire	4403.9	1582.8	1621.9	1102.3	97.3	0	82.0	11.0	28.0
7	CEDENO Emily	11020.1	3666.4	3320.4	2781.5	663.4	589.6	210.0	65.0	29.6
8	GONZALEZ Schiandra	8634.4	2365.0	3763.7	1936.7	445.5	124.3	159.0	36.0	28.3
10	COX Marta	10165.0	3603.5	3720.4	2427.4	358.8	54.9	178.0	26.0	27.7
13	TANNER Riley	10310.8	3876.8	2965.4	2471.5	727.9	269.1	197.0	62.0	29.5
19	CEDENO Lineth	6524.1	2529.4	2458.3	1068.6	279.2	188.5	90.0	27.0	29.5
23	BALTRIP-REYES Carina	8804.6	2718.0	3722.6	1812.0	418.2	133.8	149.0	33.0	31.5
2	JAEN Hilary	1105.1	383.1	393.7	219.3	78.2	30.8	21.0	9.0	27.7
9	RILEY Karla	3470.4	1068.5	1440.2	715.6	223.1	22.9	65.0	16.0	24.5
14	MONTENEGRO Carmen	2143.6	557.3	911.9	475.7	100.7	98.2	41.0	11.0	26.8
20	QUINTERO Aldrith	5039.2	1794.0	1751.6	1326.8	138.1	28.7	92.0	12.0	25.7

## Physical Data

Jamaica



#	Player	Total Distance (m)	Zone 1: 0-7 km/h (m)	Zone 2: 7-13km/h (m)	Zone 3: 13-19km/h (m)	Zone 4: 19-23km/h (m)	Zone 5: 23+ km/h (m)	High Speed Runs (Zone 4)	Sprints (Zone 5)	Top Speed (km/h)
13	SPENCER Rebecca	4256.2	3185.4	884.9	186.0	0	0	21.0	0	18.1
3	SAMPSON Vyan	9528.9	3621.0	4001.2	1610.4	277.3	19.1	130.0	20.0	28.6
4	SWABY Chantelle	9242.2	3112.8	4185.8	1406.7	382.6	154.3	122.0	31.0	29.6
8	SPENCE Drew	9769.7	3516.1	2945.6	2740.4	486.5	81.1	207.0	35.0	26.6
10	BROWN Jody	7481.3	3347.9	2296.0	1171.6	424.9	240.1	109.0	39.0	32.7
14	BLACKWOOD Deneisha	10187.2	3331.2	3709.2	2303.3	417.7	425.8	204.0	46.0	29.0
15	CAMERON Tiffany	9421.8	3049.8	3370.2	2425.2	464.5	112.1	181.0	37.0	30.2
17	SWABY Allyson	9786.3	3472.2	3786.3	1932.8	385.6	208.4	155.0	39.0	30.5
18	CARTER Trudi	6892.6	2329.7	2487.6	1601.9	385.3	88.2	140.0	34.0	27.4
20	PRIMUS Atlanta	8979.6	3596.3	2952.5	2009.6	356.5	64.7	165.0	28.0	27.6
22	McKENNA Kayla	7694.9	2809.4	2844.8	1474.3	401.7	165.4	133.0	44.0	27.9
2	WASHINGTON Solai	1684.4	626.8	562.4	295.6	127.8	71.9	25.0	12.0	28.8
7	McNAMARA Peyton	1138.4	359.3	416.6	319.4	43.1	0	25.0	4.0	21.9
9	SIMMONDS Kameron	1874.2	563.0	685.2	422.3	151.2	52.5	35.0	10.0	27.5
19	WILTSHIRE Tiernny	1130.8	354.0	445.2	235.7	39.0	56.8	20.0	7.0	27.7
21	MATTHEWS Cheyna	3146.6	1462.2	901.2	558.2	172.4	52.9	46.0	15.0	29.7

