



Denmark 1 – 0 China PR

Group D – Match 8
22 July 2023
20:00 Kick Off
Perth Oval

POST MATCH SUMMARY REPORT

Match Summary - Teams



Denmark

1 — 0

China PR

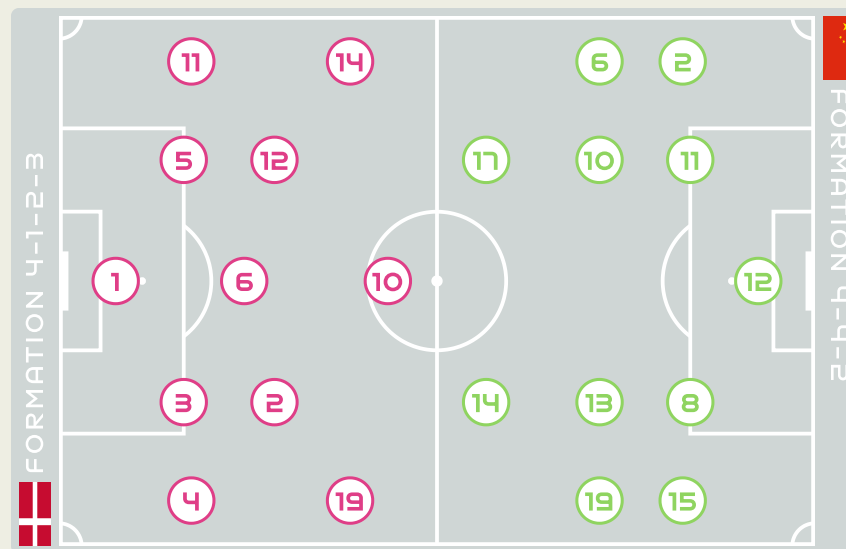


STARTING

1	GK	CHRISTENSEN Lene	
2	MF	HASBO Josefine	
3	DF	BALLISAGER Stine	
4	DF	SEVECKE Rikke	40'
5	DF	BOYE Simone	
6	MF	HOLMGAARD Karen	
10	FW	HARDER Pernille (C)	
11	DF	VEJE Katrine	
12	MF	KUHL Kathrine	62'
14	MF	SORENSEN Nicoline	72'
19	DF	THOMSEN Janni	85'

SUBSTITUTES

16	GK	LARSEN Kathrine	
22	GK	BAY Maja	
7	MF	TROELSGAARD Sanne	
8	MF	SNERLE Emma	
9	FW	VANGSGAARD Amalie	85' 90'
13	DF	THRIGE Sara	
15	MF	THOGERSEN Frederikke	
17	FW	MADSEN Rikke Marie	72'
18	DF	GEVITZ Luna	
20	FW	BRUUN Signe	62'
21	FW	GEJL Mille	
23	DF	SVAVA Sofie	



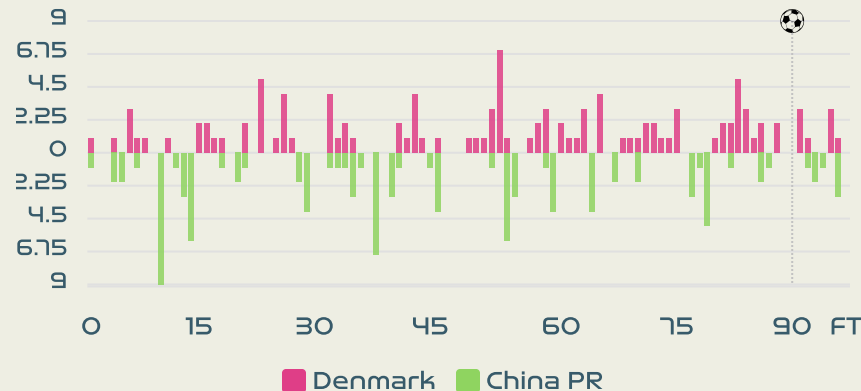
STARTING

	XU Huan	GK	12	
85'	LI Mengwen	DF	2	
46'	ZHANG Xin	MF	6	
	YAO Wei	DF	8	
	ZHANG Rui	MF	10	
	(C) WANG Shanshan	FW	11	
	YANG Lina	MF	13	
78'	LOU Jiahui	FW	14	
	CHEN Qiaozhu	DF	15	
90+1'	WU Chengshu	MF	17	
	ZHANG Linyan	MF	19	

SUBSTITUTES

	ZHU Yu	GK	1	
	PAN Hongyan	GK	22	
	DOU Jiaxing	DF	3	
	WANG Linlin	DF	4	
	WU Haiyan	DF	5	
46'	WANG Shuang	FW	7	
78'	SHEN Mengyu	MF	9	
	YAO Lingwei	MF	16	
	TANG Jiali	FW	18	
	XIAO Yuyi	FW	20	
90+1'	GU Yasha	MF	21	
85'	GAO Chen	DF	23	

Distribution in the Final Third



Match Summary - Key Statistics



Possession

Total	49.2%	15.1%	35.7%	Total
1	Goals			0
12 (1)	Attempts at Goal (On Target)			8 (2)
488 (385)	Total Passes (Complete)			396 (291)
79 %	Pass Completion %			73 %
61	Completed Line Breaks			75
3	Defensive Line Breaks			7
82	Receptions in the Final Third			89
18	Crosses			17
18	Ball Progressions			14
203 (58)	Defensive Pressures Applied (Direct Pressures)			220 (51)
91	Forced Turnovers			92
117	Second Balls			112
115.9 km	Total Distance Covered			113.1 km
5.8 km	Zone 4 - Low Speed Sprinting: 19-23km/h			5.5 km



Denmark

Phases of Play

China PR



IN POSSESSION



OUT OF POSSESSION





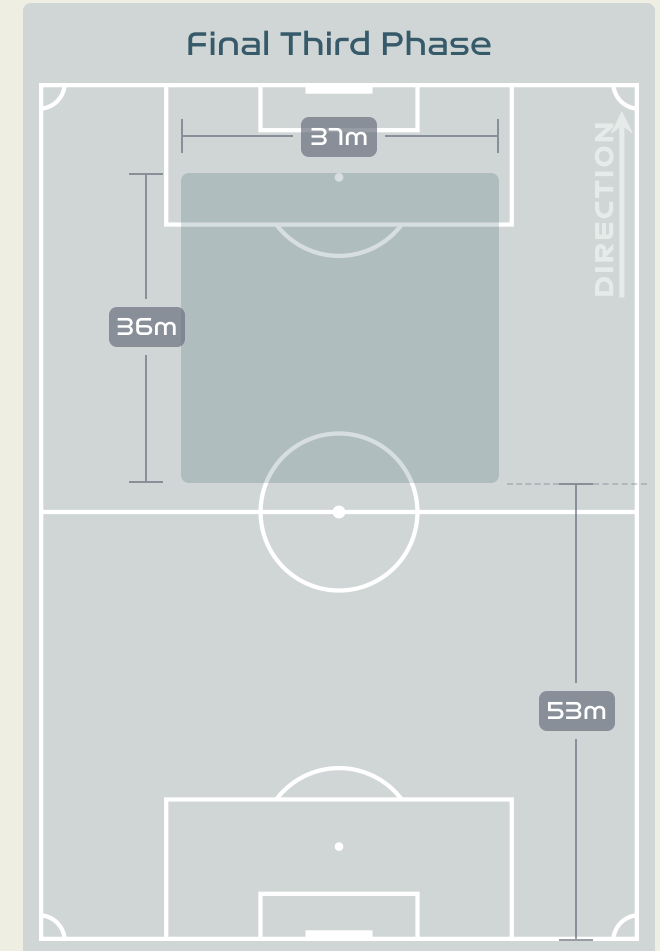
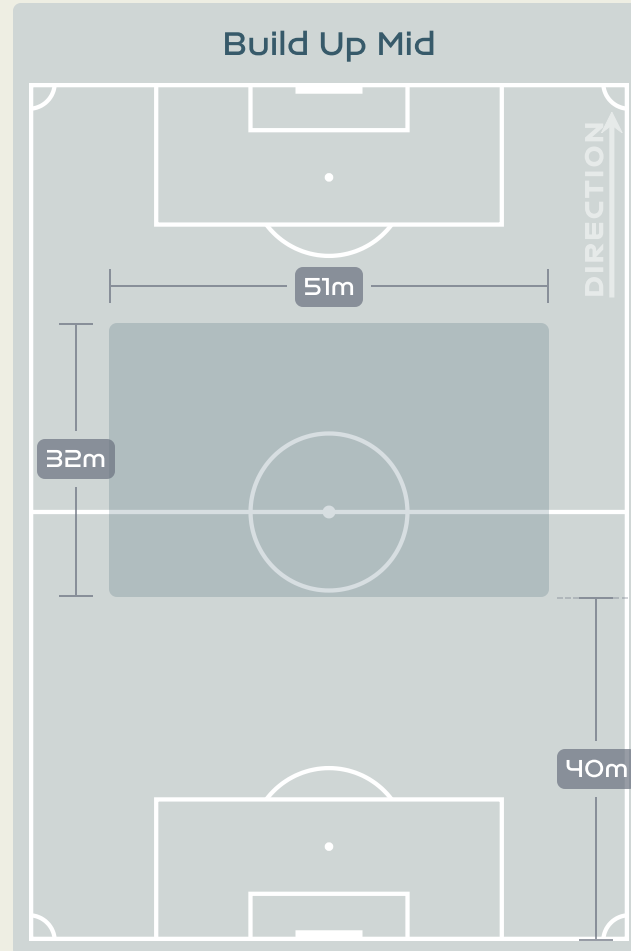
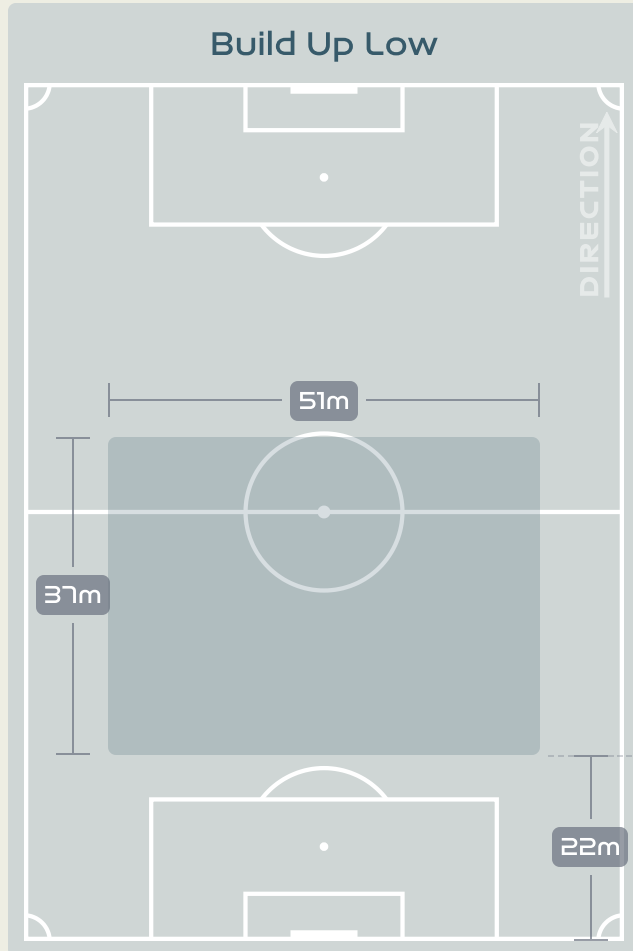
IN POSSESSION



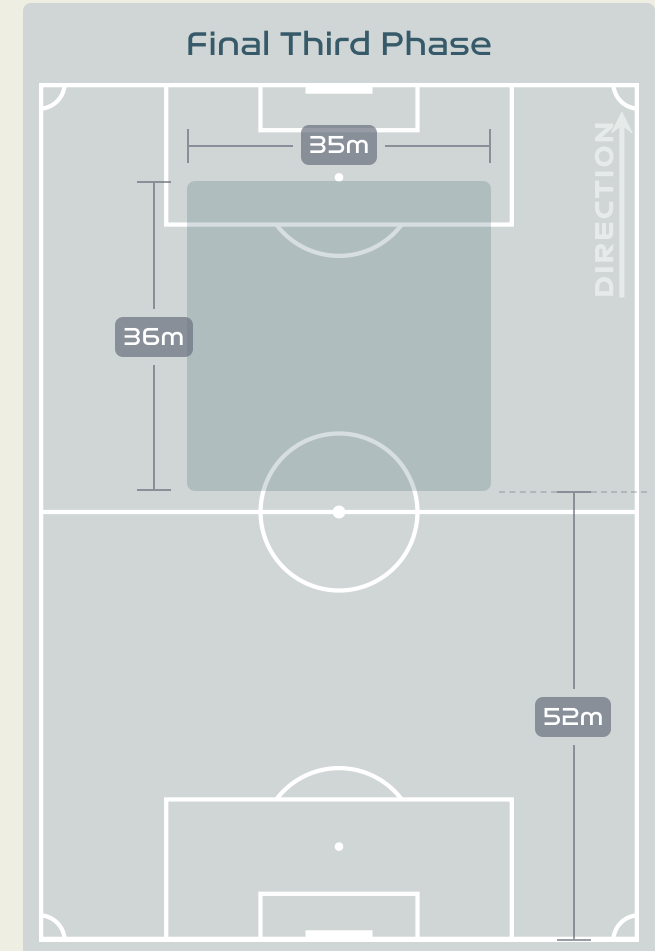
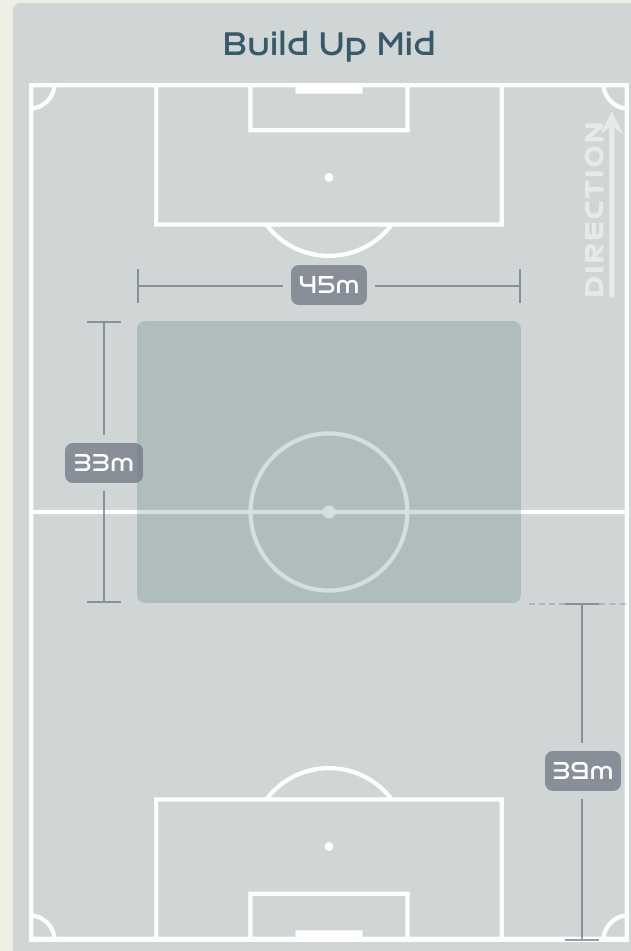
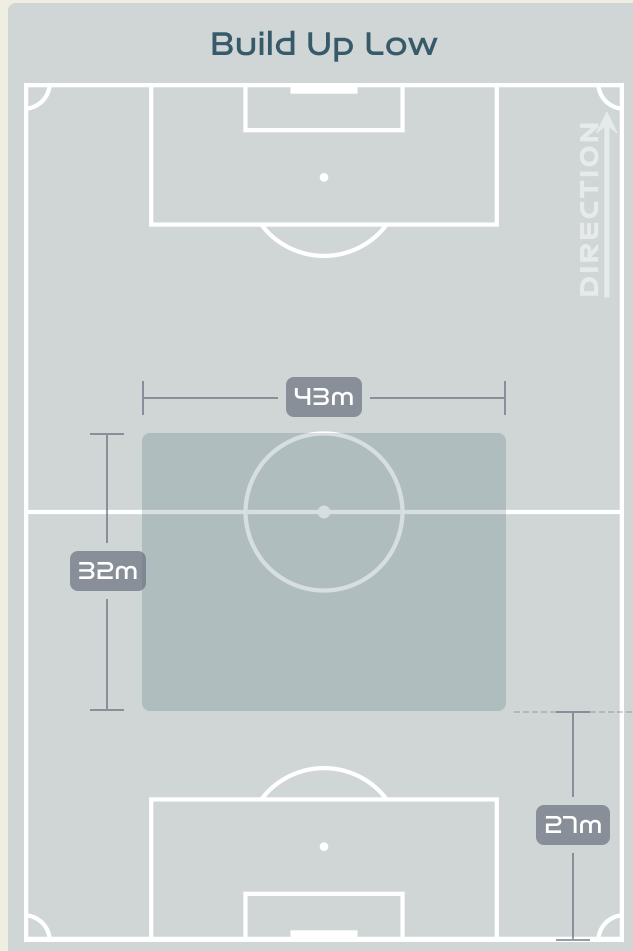
Denmark v China PR



In Possession Line Height & Team Length



In Possession Line Height & Team Length



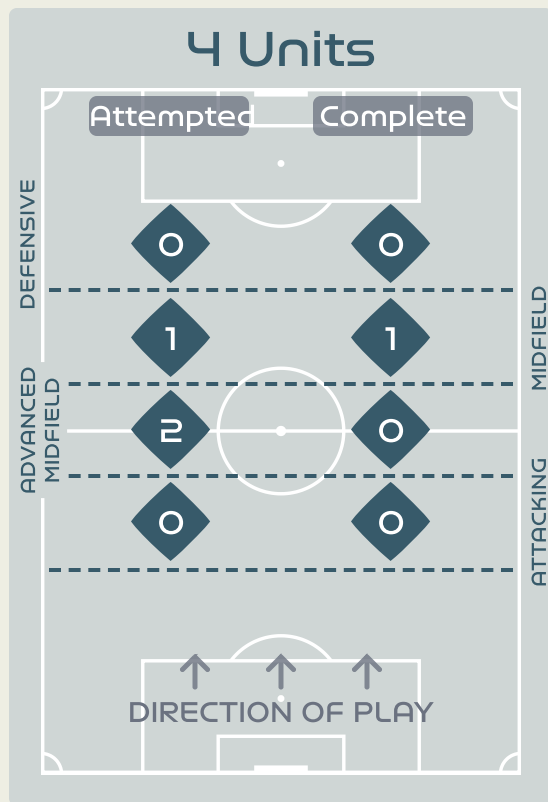
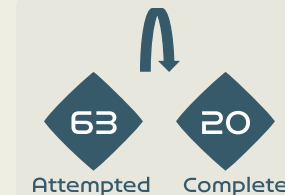
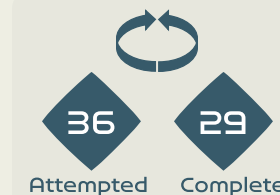
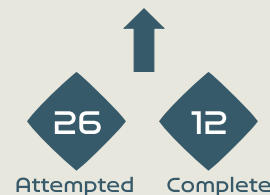
Line Breaks



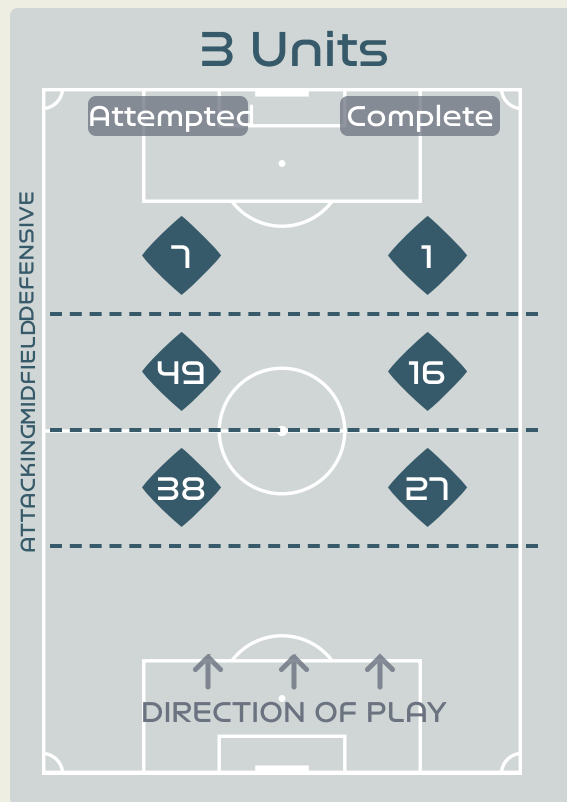
Denmark

Attempted Line Breaks

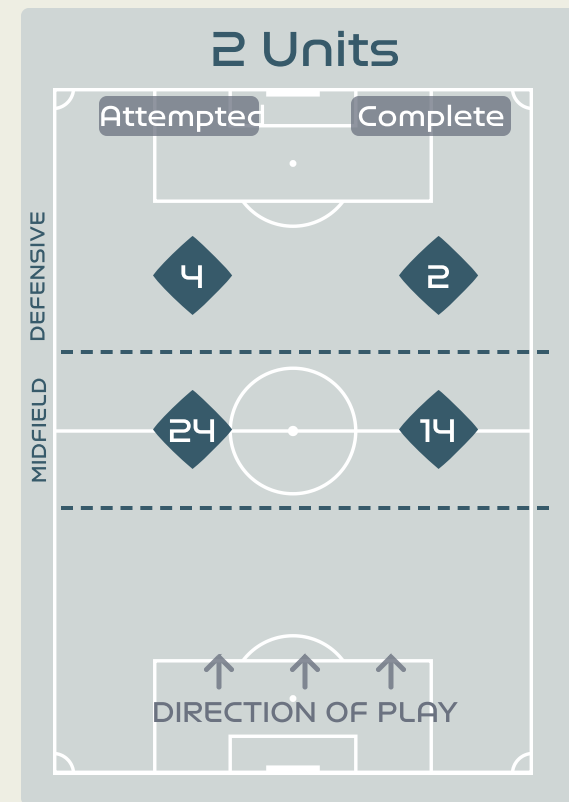
125



Attempted Line Breaks 3
 Inside Shape 3
 Outside Shape 0



Attempted Line Breaks 94
 Inside Shape 65
 Outside Shape 29



Attempted Line Breaks 28
 Inside Shape 21
 Outside Shape 7

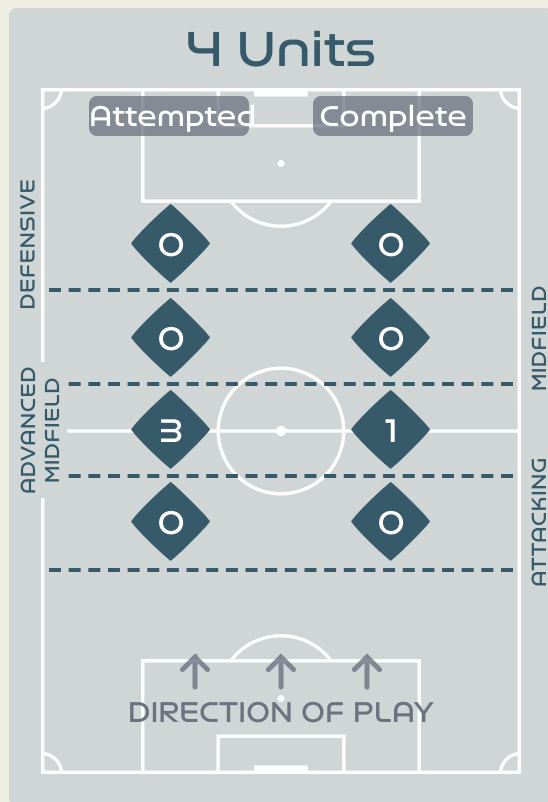
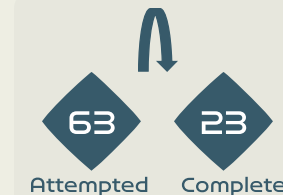
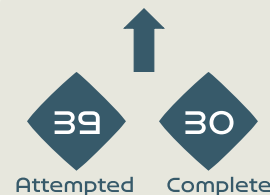
Line Breaks



China PR

Attempted Line Breaks

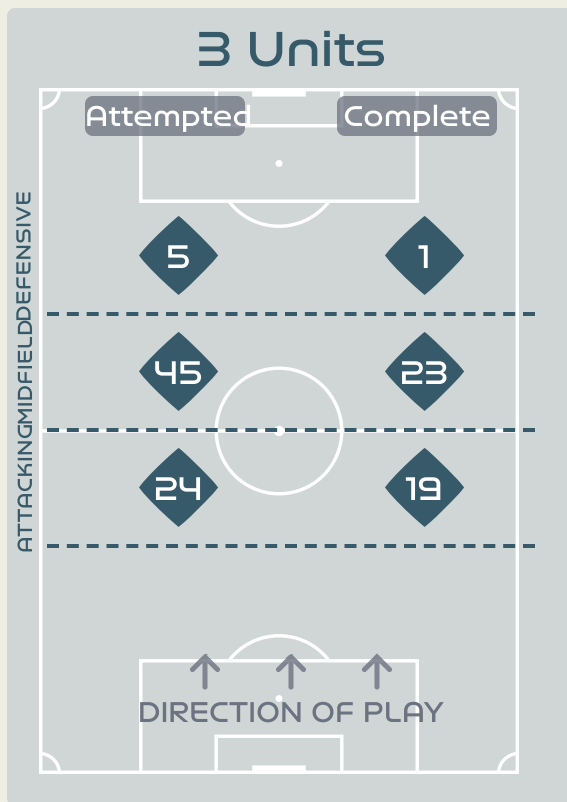
130



Attempted Line Breaks 3

Inside Shape 2

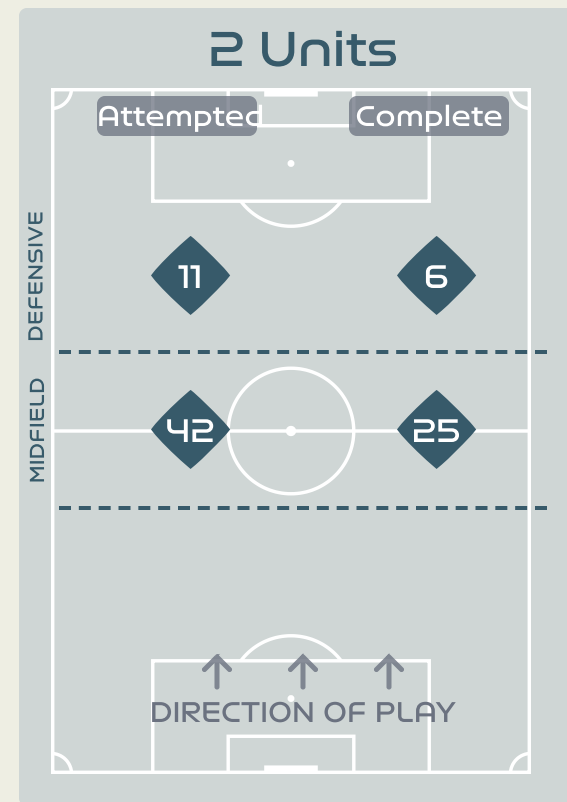
Outside Shape 1



Attempted Line Breaks 74

Inside Shape 51

Outside Shape 23



Attempted Line Breaks 53

Inside Shape 41

Outside Shape 12

Line Breaks



					4 Units				3 Units			2 Units		Direction			Distribution Type		
#	Player	Line Breaks Attempted	Line Breaks Completed	Line Break Completion %	Attacking Line	Attacking Midfield Line	Midfield Line	Defensive Line	Attacking Line	Midfield Line	Defensive Line	Midfield Line	Defensive Line	Through	Around	Over	Pass	Cross	Ball Progression
1	CHRISTENSEN Lene	5	0	0%	0	0	0	0	4	0	0	1	0	0	0	5	5	0	0
2	HASBO Josefine	8	4	50%	0	1	0	0	0	5	0	2	0	3	3	2	8	0	0
3	BALLISAGER Stine	22	13	59%	0	1	0	0	10	9	0	2	0	3	5	14	22	0	0
4	SEVECKE Rikke	21	10	47%	0	0	0	0	5	7	4	3	2	4	4	13	20	1	0
5	BOYE Simone	11	7	63%	0	0	0	0	7	4	0	0	0	1	6	4	11	0	0
6	HOLMGAARD Karen	9	4	44%	0	0	0	0	1	4	0	3	1	5	1	3	9	0	0
10	HARDER Pernille	2	1	50%	0	0	0	0	0	1	1	0	0	0	2	0	2	0	0
11	VEJE Katrine	27	11	40%	0	0	0	0	9	11	0	6	1	3	11	13	27	0	0
12	KUHL Kathrine	10	6	60%	0	0	0	0	2	2	0	6	0	4	3	3	10	0	0
14	SORENSEN Nicoline	5	1	20%	0	0	0	0	0	3	2	0	0	0	1	4	1	4	0
19	THOMSEN Janni	2	2	100%	0	0	0	0	0	2	0	0	0	1	0	1	2	0	0
9	VANGSGAARD Amalie	0	0	0%	0	0	0	0	0	0	0	0	0	0	0	0	0	0	0
17	MADSEN Rikke Marie	1	0	0%	0	0	0	0	0	0	0	1	0	1	0	0	1	0	0
20	BRUUN Signe	2	2	100%	0	0	1	0	0	1	0	0	0	1	0	1	2	0	0

Line Breaks



					4 Units				3 Units			2 Units		Direction			Distribution Type		
#	Player	Line Breaks Attempted	Line Breaks Completed	Line Break Completion %	Attacking Line	Attacking Midfield Line	Midfield Line	Defensive Line	Attacking Line	Midfield Line	Defensive Line	Midfield Line	Defensive Line	Through	Around	Over	Pass	Cross	Ball Progression
12	XU Huan	6	1	16%	0	0	0	0	3	1	0	2	0	0	0	6	6	0	0
2	LI Mengwen	13	7	53%	0	0	0	0	4	3	0	5	1	3	2	8	13	0	0
6	ZHANG Xin	3	0	0%	0	0	0	0	0	1	1	1	0	1	2	0	3	0	0
8	YAO Wei	10	5	50%	0	0	0	0	1	3	0	6	0	1	1	8	10	0	0
10	ZHANG Rui	20	13	65%	0	1	0	0	3	7	0	8	1	7	4	9	19	1	0
11	WANG Shanshan	13	7	53%	0	1	0	0	4	2	0	5	1	1	0	12	13	0	0
13	YANG Lina	12	10	83%	0	0	0	0	2	4	0	6	0	6	1	5	12	0	0
14	LOU Jiahui	4	3	75%	0	0	0	0	0	1	0	2	1	0	2	2	3	1	0
15	CHEN Qiaozhu	24	11	45%	0	0	0	0	5	10	1	5	3	4	8	12	21	2	1
17	WU Chengshu	4	3	75%	0	0	0	0	0	3	1	0	0	2	2	0	3	0	1
19	ZHANG Linyan	7	5	71%	0	0	0	0	0	3	0	1	3	4	3	0	6	0	1
7	WANG Shuang	7	5	71%	0	0	0	0	0	3	2	1	1	6	1	0	7	0	0
9	SHEN Mengyu	2	1	50%	0	0	0	0	0	2	0	0	0	1	1	0	2	0	0
21	GU Yasha	1	1	100%	0	0	0	0	0	1	0	0	0	1	0	0	1	0	0
23	GAO Chen	4	3	75%	0	1	0	0	2	1	0	0	0	2	1	1	4	0	0

Passing Networks



#	Passes From ↓ to →	CHRISTENSEN Lene	HASBO Josefine	BALLISAGER Stine	SEVECKE Rikke	BOYE Simone	HOLMGAARD Karen	HARDER Pernille	VEJE Katrine	KUHL Kathrine	SORENSEN Nicoline	THOMSEN Janni	VANGSGAARD Amalie	MADSEN Rikke Marie	BRUUN Signe
1	CHRISTENSEN Lene		0	19	1	6	2	0	1	0	0	0	0	0	0
2	HASBO Josefine	0		2	3	1	2	2	1	3	2	1	0	0	1
3	BALLISAGER Stine	4	1		17	30	5	1	1	0	3	4	0	0	2
4	SEVECKE Rikke	2	4	9		2	3	1	3	1	1	1	0	0	2
5	BOYE Simone	8	0	26	1		5	0	27	3	1	1	0	0	0
6	HOLMGAARD Karen	0	1	8	4	4		1	7	3	0	0	0	1	0
10	HARDER Pernille	0	1	0	1	0	2		0	0	2	0	0	3	1
11	VEJE Katrine	3	1	5	2	18	4	4		5	7	0	0	0	0
12	KUHL Kathrine	0	2	1	4	2	0	1	8		3	0	0	0	0
14	SORENSEN Nicoline	0	0	0	1	1	1	1	6	3		0	0	0	0
19	THOMSEN Janni	0	0	2	2	0	0	1	1	3	1		0	1	0
9	VANGSGAARD Amalie	0	1	0	0	0	1	0	0	0	0	0		0	0
17	MADSEN Rikke Marie	0	0	0	0	0	0	1	0	0	0	0	0		2
20	BRUUN Signe	0	0	0	0	0	0	3	0	0	0	1	1	0	

Top 5 Player to Player Passers

Player	Passed To	% of Total Team Passes
BALLISAGER Stine	BOYE Simone	8.4%
BOYE Simone	VEJE Katrine	7.5%
BOYE Simone	BALLISAGER Stine	7.2%
CHRISTENSEN Lene	BALLISAGER Stine	5.3%
VEJE Katrine	BOYE Simone	5%

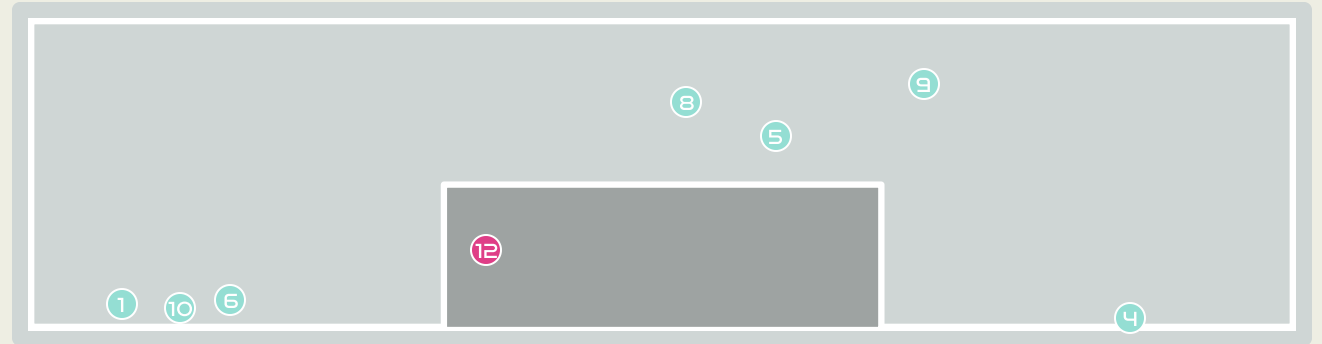
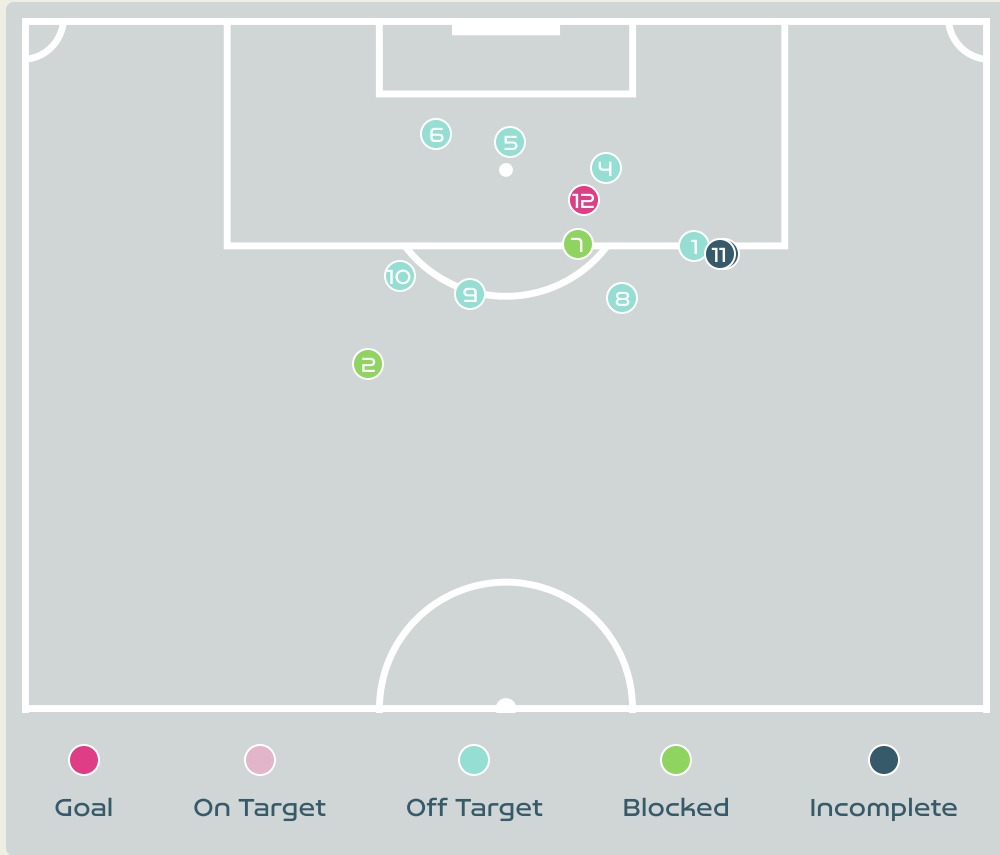
Passing Networks








#	Passes From ↓ to →	XU Huan	LI Mengwen	ZHANG Xin	YAO Wei	ZHANG Rui	WANG Shanshan	YANG Lina	LOU Jiahui	CHEN Qiaozhu	WU Chengshu	ZHANG Linyan	WANG Shuang	SHEN Mengyu	GU Yasha	GAO Chen
12	XU Huan		0	0	2	0	1	1	0	0	0	0	0	0	0	0
2	LI Mengwen	0		3	0	6	5	2	1	0	2	0	4	0	0	0
6	ZHANG Xin	0	4		1	3	4	0	2	0	0	0	0	0	0	0
8	YAO Wei	2	0	0		1	8	5	0	7	0	1	0	0	0	0
10	ZHANG Rui	0	8	6	2		6	1	2	2	3	7	1	0	0	0
11	WANG Shanshan	0	5	3	7	3		1	0	1	0	1	2	1	0	1
13	YANG Lina	0	2	0	7	5	4		2	2	2	4	3	1	0	1
14	LOU Jiahui	0	1	1	0	4	0	1		4	3	2	2	0	0	0
15	CHEN Qiaozhu	0	0	0	3	1	0	3	7		1	5	0	0	2	0
17	WU Chengshu	0	2	0	0	2	0	3	2	0		4	0	1	0	0
19	ZHANG Linyan	0	0	0	1	2	1	2	3	7	1		2	0	0	0
7	WANG Shuang	0	1	0	0	5	0	0	1	1	3	3		0	0	0
9	SHEN Mengyu	0	0	0	0	1	0	1	0	0	2	0	2		0	1
21	GU Yasha	0	0	0	0	0	0	0	0	0	0	0	0	1		0
23	GAO Chen	0	0	0	0	0	0	0	0	0	1	0	0	2	0	

Top 5 Player to Player Passers		
Player	Passed To	% of Total Team Passes
YAO Wei	WANG Shanshan	3.1%
ZHANG Rui	LI Mengwen	3.1%
YAO Wei	CHEN Qiaozhu	2.7%
ZHANG Rui	ZHANG Linyan	2.7%
WANG Shanshan	YAO Wei	2.7%

Attempts at Goal



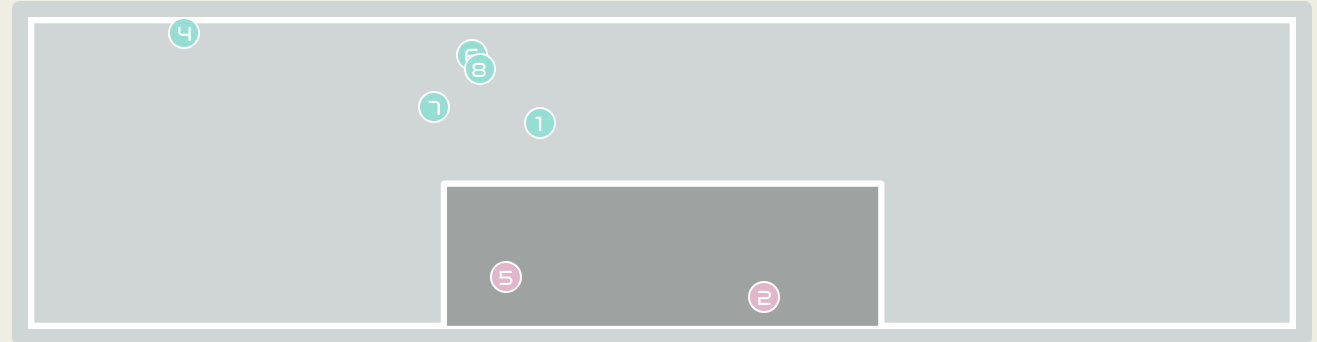
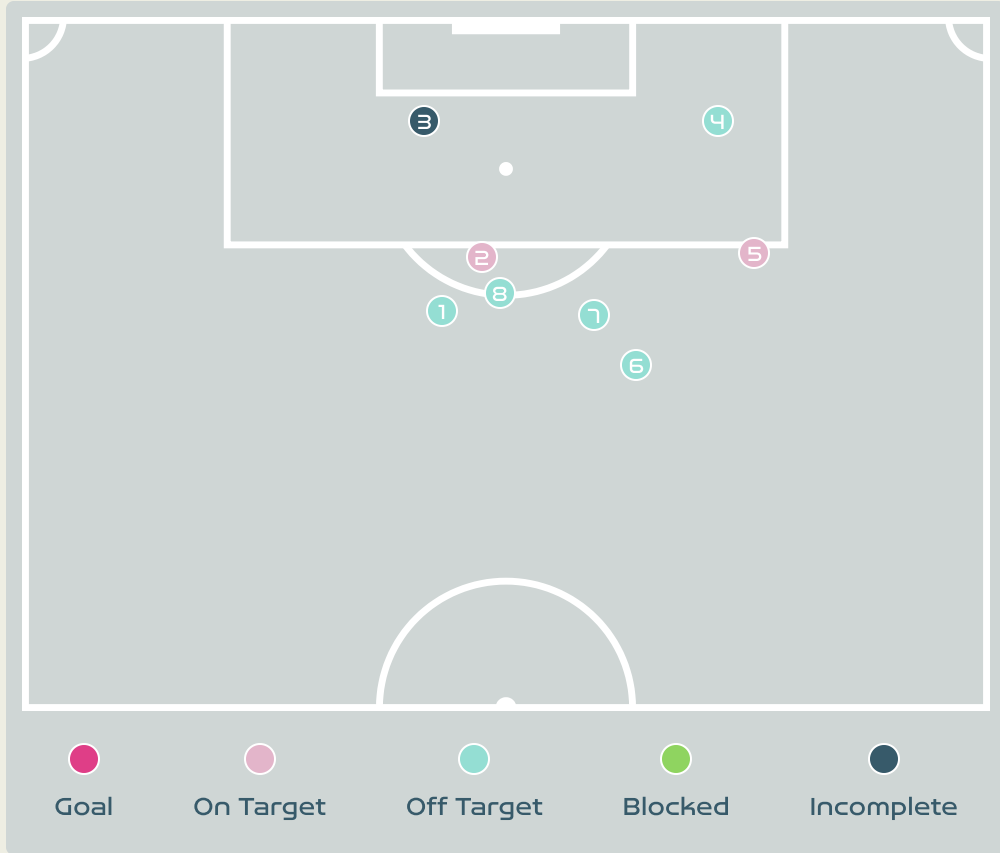
Key	Outcome	Shots
	Goals	1
	On Target	0
	Off Target	7
	Blocked	2
	Incomplete	2






Attempts at Goal



Time	Player	Outcome	Body Part	Delivery Type
19	12 KUHL Kathrine	Off Target	Right Foot	Loose Ball
23	6 HOLMGAARD Karen	Incomplete - Blocked	Right Foot	Loose Ball
23	19 THOMSEN Janni	Incomplete - Defensive Event	Right Foot	Loose Ball
48	2 HASBO Josefine	Deflected Off Target - Defensive Event	Right Foot	Loose Ball
50	2 HASBO Josefine	Off Target	Head	Loose Ball
74	5 BOYE Simone	Off Target	Head	Corner
80	10 HARDER Pernille	Incomplete - Blocked	Right Foot	Pass
80	10 HARDER Pernille	Off Target	Right Foot	Loose Ball
81	20 BRUUN Signe	Deflected Off Target - Defensive Event	Right Foot	Pass
82	17 MADSEN Rikke Marie	Off Target	Right Foot	Pass
84	9 VANGSGAARD Amalie	Incomplete	Left Foot	Loose Ball
88	9 VANGSGAARD Amalie	On Target - Goal	Head	Corner

Attempts at Goal



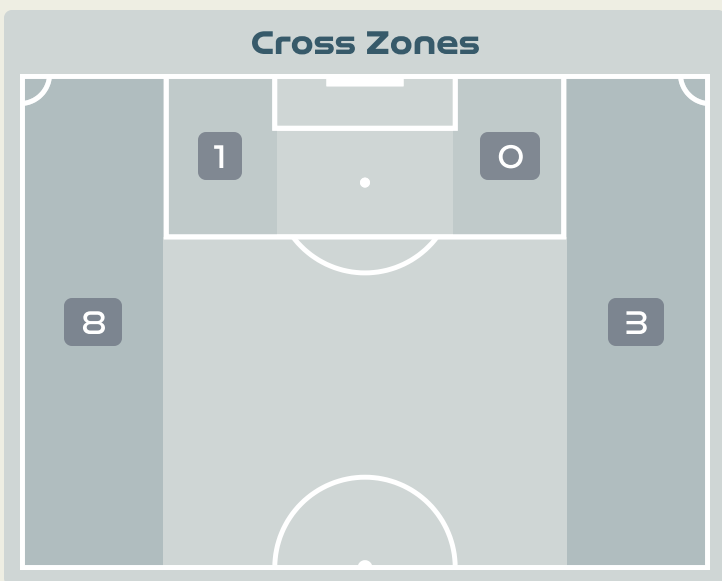
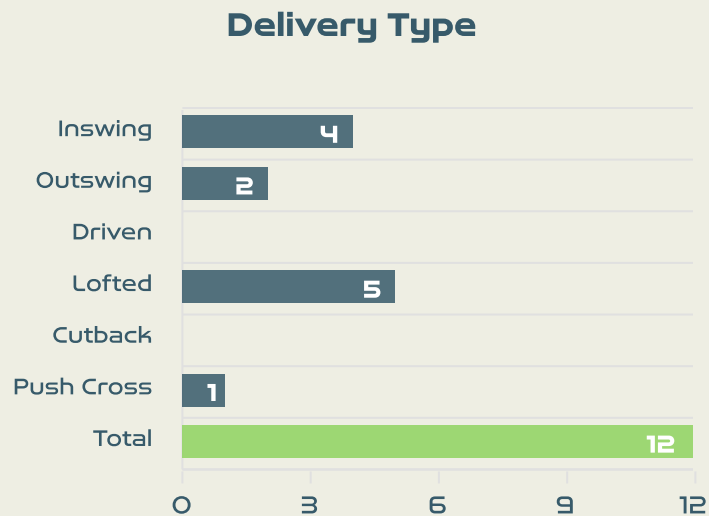
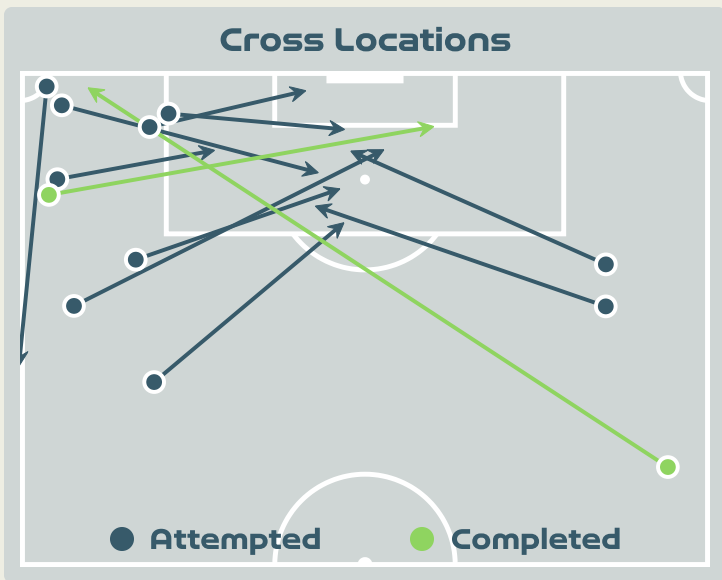
Key	Outcome	Shots
	Goals	0
	On Target	2
	Off Target	5
	Blocked	0
	Incomplete	1

Attempts at Goal

China PR

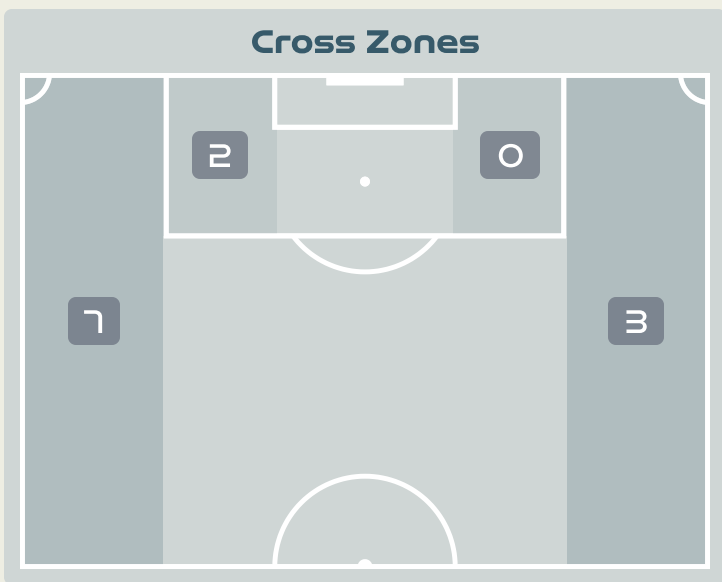
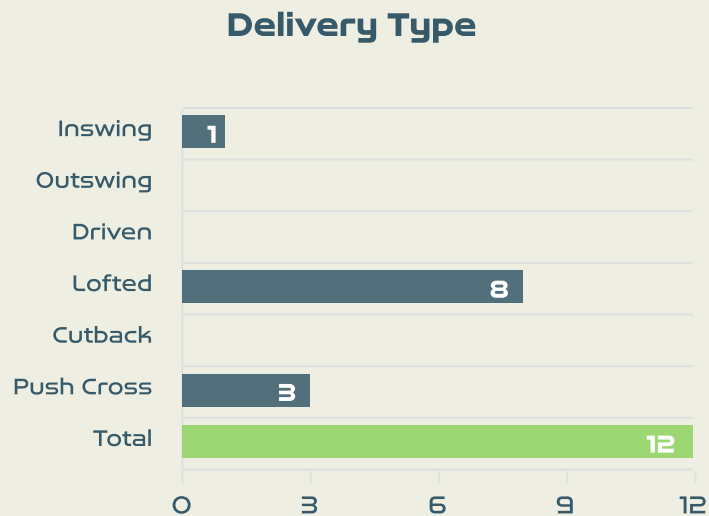
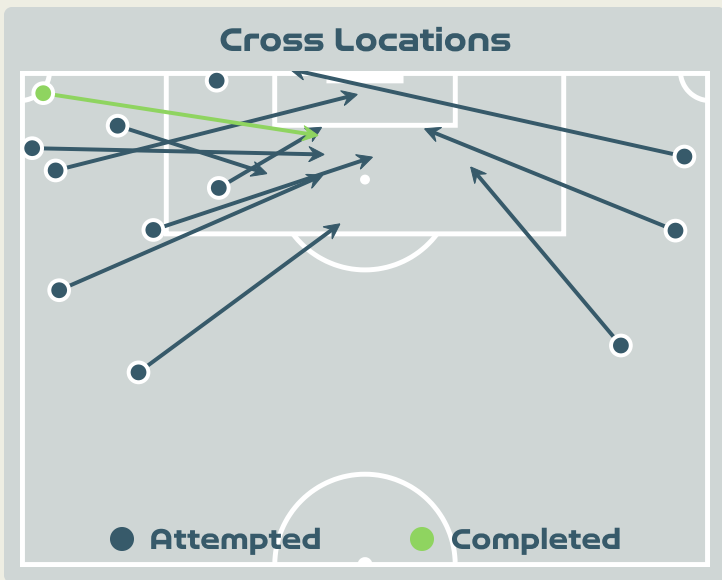
Time	Player	Outcome	Body Part	Delivery Type
5	15 CHEN Qiaozhu	Off Target	Left Foot	Loose Ball
7	19 ZHANG Linyan	On Target - Saved	Left Foot	Ball Progression
33	17 WU Chengshu	Incomplete - Player On Ball Error	Head	Cross
45	2 LI Mengwen	Off Target	Left Foot	Loose Ball
48	7 WANG Shuang	On Target - Saved	Left Foot	Loose Ball
64	7 WANG Shuang	Off Target	Left Foot	Pass
70	10 ZHANG Rui	Off Target	Right Foot	Loose Ball
78	7 WANG Shuang	Off Target	Left Foot	Pass

Crosses (Open Play)



#	Player	Inswing	Outswing	Driven	Lofted	Cutback	Push Cross	Total Attempted
1	CHRISTENSEN Lene	0	0	0	0	0	0	0
2	HASBO Josefine	0	0	0	0	0	0	0
3	BALLISAGER Stine	0	0	0	0	0	0	0
4	SEVECKE Rikke	1	0	0	1	0	0	2
5	BOYE Simone	0	0	0	0	0	0	0
6	HOLMGAARD Karen	0	0	0	0	0	0	0
10	HARDER Pernille	1	0	0	1	0	0	2
11	VEJE Katrine	0	1	0	1	0	1	3
12	KUHL Kathrine	0	0	0	0	0	0	0
14	SORENSEN Nicoline	2	1	0	2	0	0	5
19	THOMSEN Janni	0	0	0	0	0	0	0
9	VANGSGAARD Amalie	0	0	0	0	0	0	0
17	MADSEN Rikke Marie	0	0	0	0	0	0	0
20	BRUUN Signe	0	0	0	0	0	0	0

Crosses (Open Play)



#	Player	Inswing	Outswing	Driven	Lofted	Cutback	Push Cross	Total Attempted
12	XU Huan	0	0	0	0	0	0	0
2	LI Mengwen	0	0	0	0	0	0	0
6	ZHANG Xin	0	0	0	1	0	0	1
8	YAO Wei	0	0	0	0	0	0	0
10	ZHANG Rui	0	0	0	1	0	0	1
11	WANG Shanshan	0	0	0	0	0	0	0
13	YANG Lina	0	0	0	0	0	0	0
14	LOU Jiahui	0	0	0	2	0	1	3
15	CHEN Qiaozhu	0	0	0	4	0	1	5
17	WU Chengshu	0	0	0	0	0	0	0
19	ZHANG Linyan	0	0	0	0	0	1	1
7	WANG Shuang	1	0	0	0	0	0	1
9	SHEN Mengyu	0	0	0	0	0	0	0
21	GU Yasha	0	0	0	0	0	0	0
23	GAO Chen	0	0	0	0	0	0	0

Offering to Receive

377

Total Offers Made

100

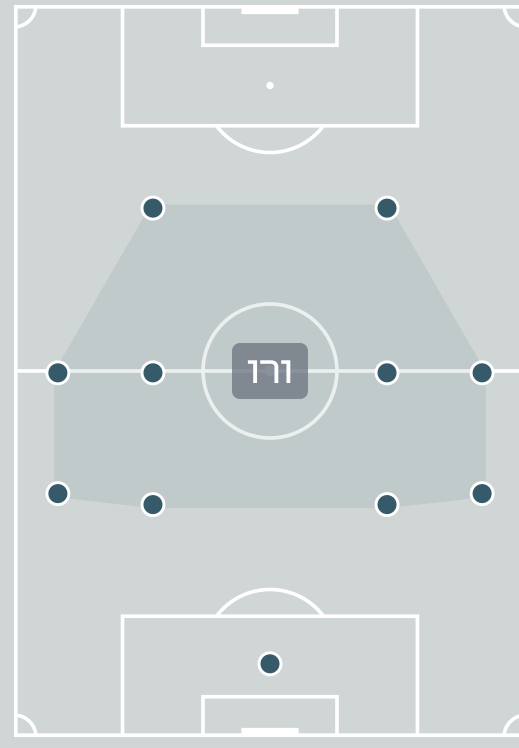
Total Offers Received

Most Offers

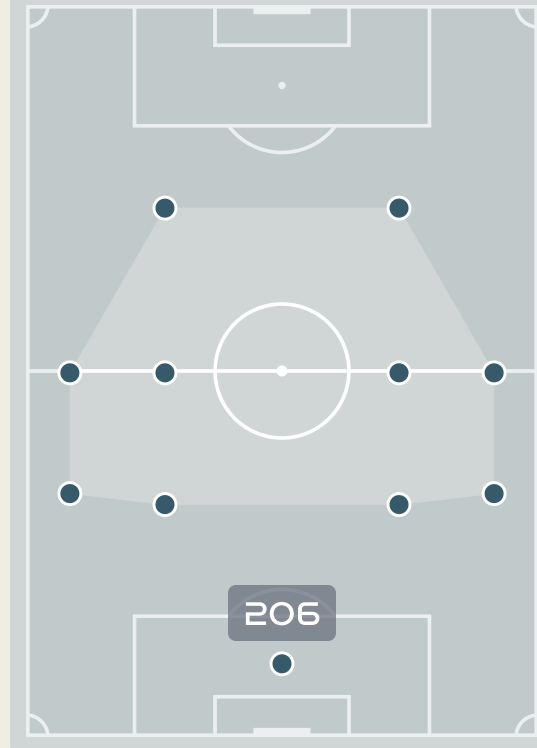
67

HARDER Pernille
CENTRE FORWARD

Offers Made Inside Shape



Offers Made Outside Shape



154

Offers Made in Final Third

158

Offers Made in Middle Third

65

Offers Made in Defensive Third

#	Player	Offers Made	Offers Received	% Made & Received
1	CHRISTENSEN Lene	19	6	31.6%
2	HASBO Josefine	24	4	16.7%
3	BALLISAGER Stine	32	12	37.5%
4	SEVECKE Rikke	11	5	45.5%
5	BOYE Simone	12	7	58.3%
6	HOLMGAARD Karen	46	12	26.1%
10	HARDER Pernille	67	8	11.9%
11	VEJE Katrine	26	14	53.8%
12	KUHL Kathrine	30	13	43.3%
14	SORENSEN Nicoline	45	9	20%
19	THOMSEN Janni	46	4	8.7%
9	VANGSGAARD Amalie	4	0	0%
17	MADSEN Rikke Marie	8	3	37.5%
20	BRUUN Signe	7	3	42.9%

Offering to Receive

290

Total Offers Made

105

Total Offers Received

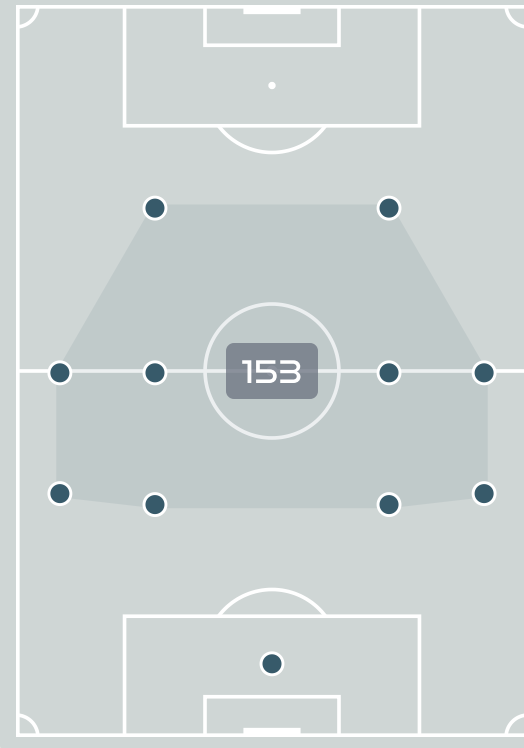
Most Offers

56

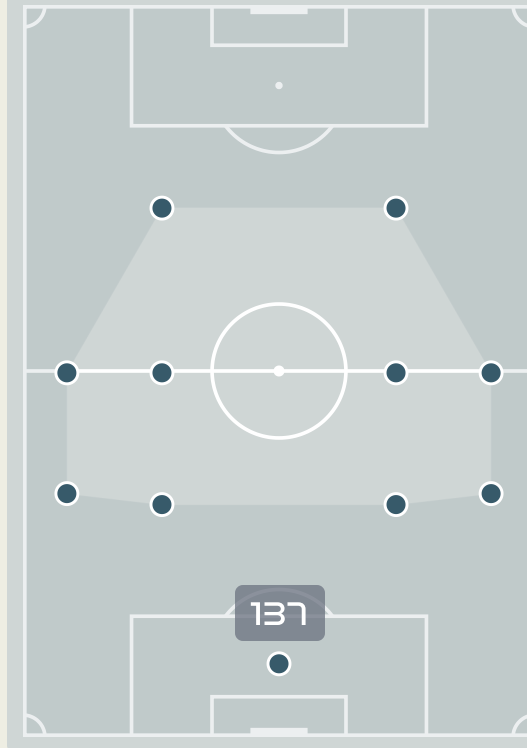
LOU Jiahui
CENTRE FORWARD LEFT

#	Player	Offers Made	Offers Received	% Made & Received
12	XU Huan	3	1	33.3%
2	LI Mengwen	21	8	38.1%
6	ZHANG Xin	14	8	57.1%
8	YAO Wei	6	3	50%
10	ZHANG Rui	45	14	31.1%
11	WANG Shanshan	6	5	83.3%
13	YANG Lina	37	13	35.1%
14	LOU Jiahui	56	15	26.8%
15	CHEN Qiaozhu	25	9	36%
17	WU Chengshu	13	4	30.8%
19	ZHANG Linyan	33	11	33.3%
7	WANG Shuang	14	9	64.3%
9	SHEN Mengyu	13	4	30.8%
21	GU Yasha	3	1	33.3%
23	GAO Chen	1	0	0%

Offers Made Inside Shape



Offers Made Outside Shape



103

Offers Made in Final Third

150

Offers Made in Middle Third

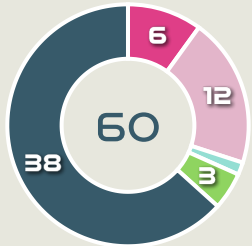
37

Offers Made in Defensive Third

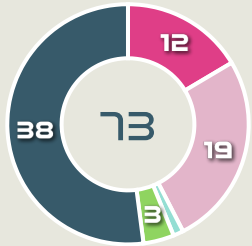
Movement to Receive

Movement Types by Phase

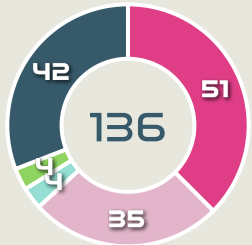
Final Third Phase



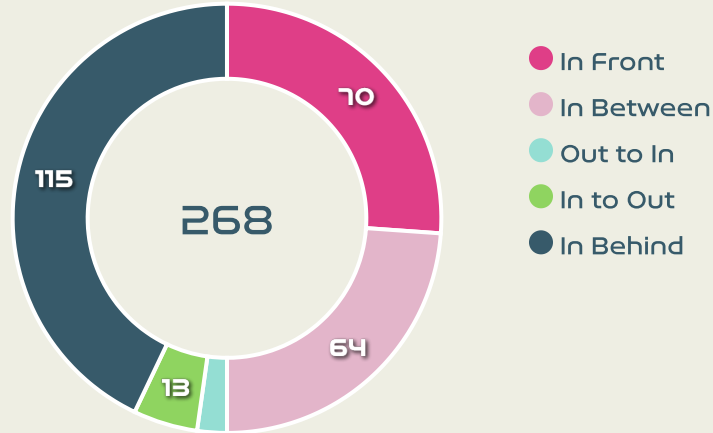
Progression Phase



Build Up Phase



All Movement Types

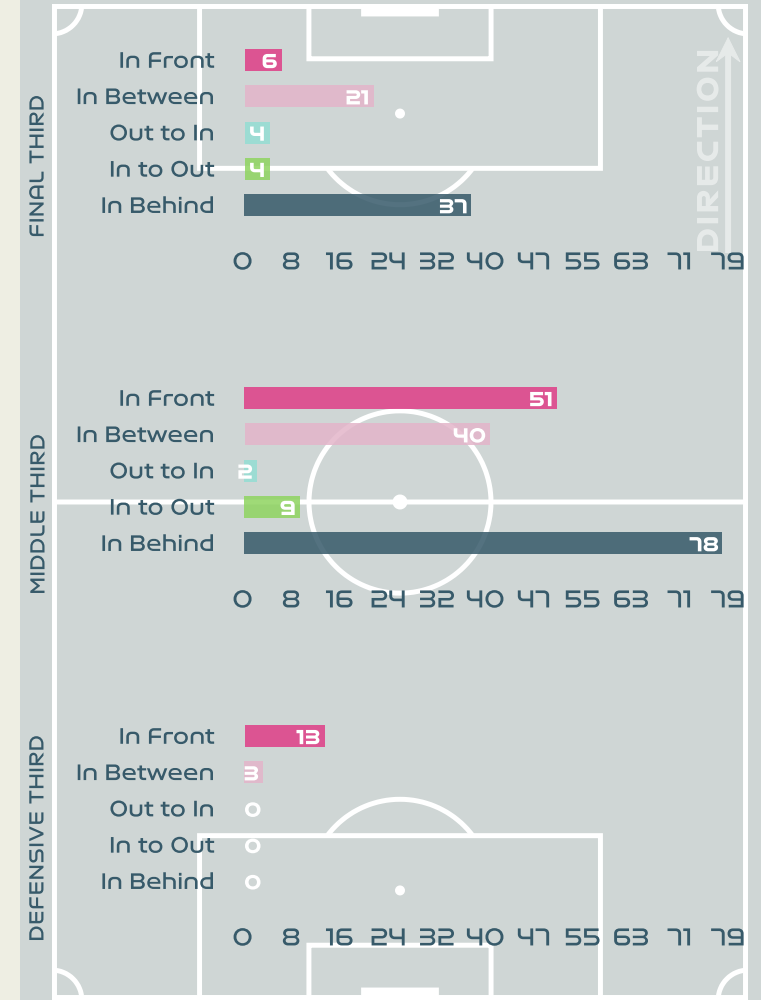


- In Front
- In Between
- Out to In
- In to Out
- In Behind

Top Ranked Players

Type	Player	Movements
In Front	6 HOLMGAARD Karen	28
In Between	12 KUHL Kathrine	15
Out to In	2 HASBO Josefine	1
In to Out	2 HASBO Josefine	3
In Behind	10 HARDER Pernille	42

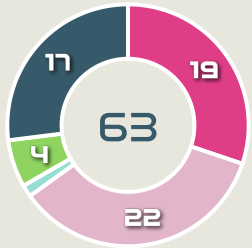
Movement Types Pitch Third



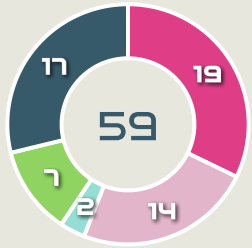
Movement to Receive

Movement Types by Phase

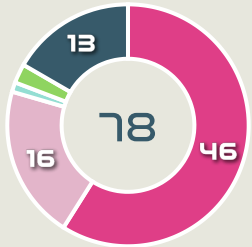
Final Third Phase



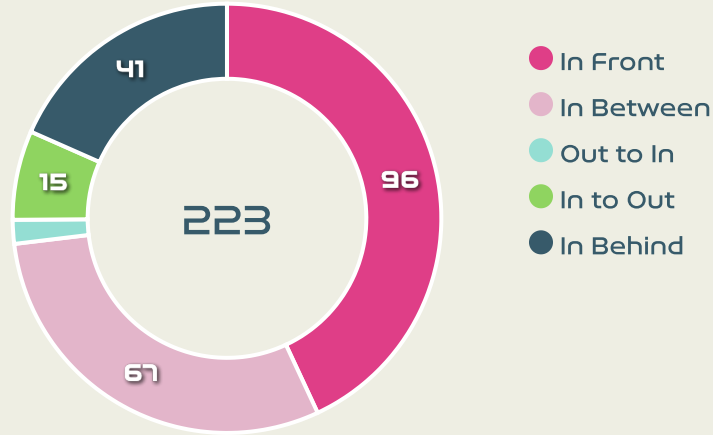
Progression Phase



Build Up Phase



All Movement Types

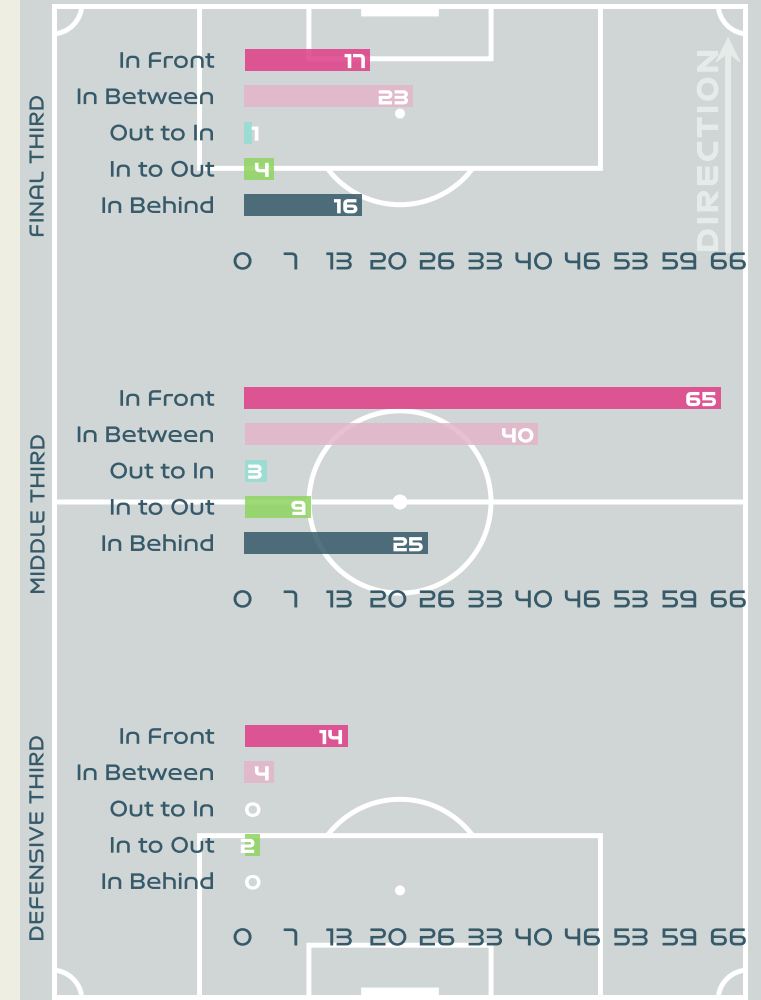


- In Front
- In Between
- Out to In
- In to Out
- In Behind

Top Ranked Players

Type	Player	Movements
In Front	10 ZHANG Rui	27
In Between	14 LOU Jiahui	23
Out to In	14 LOU Jiahui	3
In to Out	14 LOU Jiahui	5
In Behind	14 LOU Jiahui	10

Movement Types Pitch Third





OUT OF POSSESSION

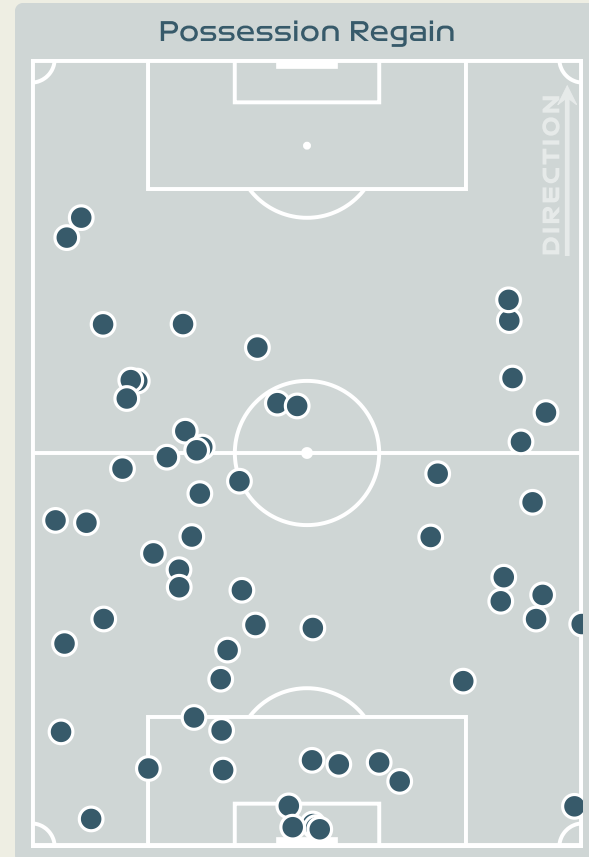
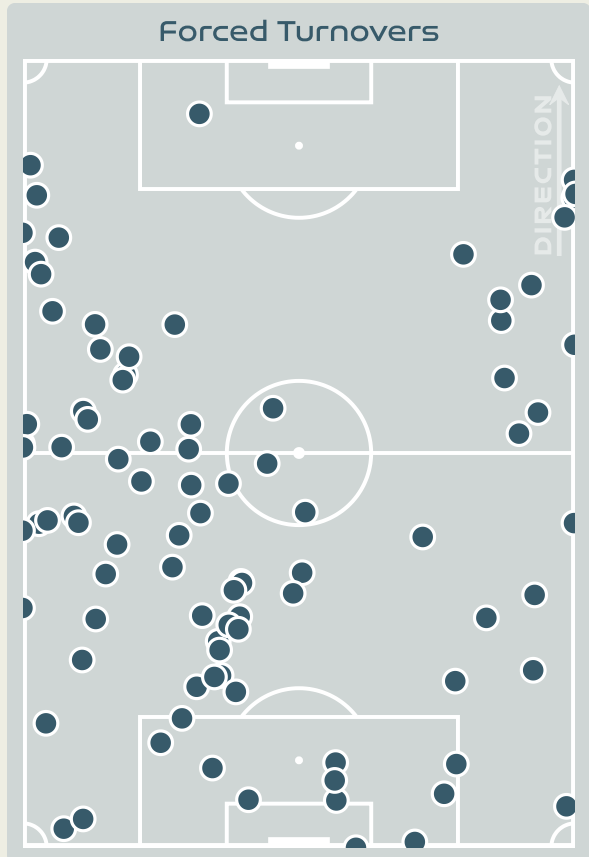
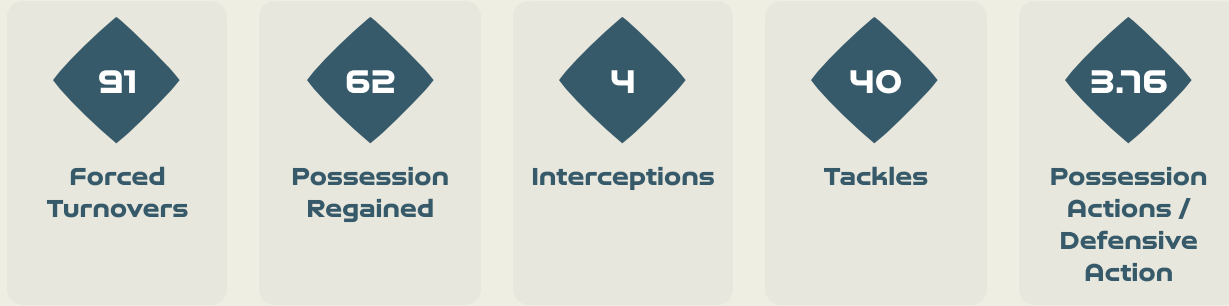


Denmark v China PR





Defensive Actions



Blocks



Possession Contests



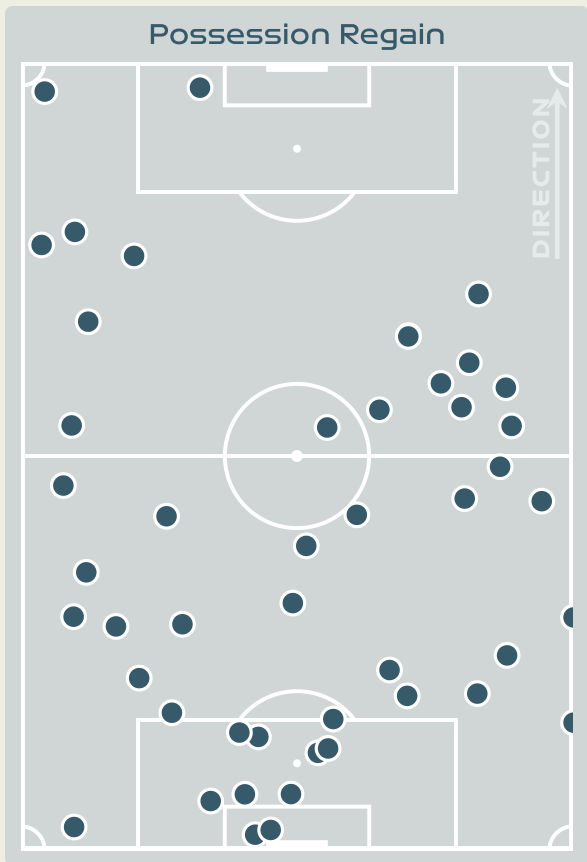
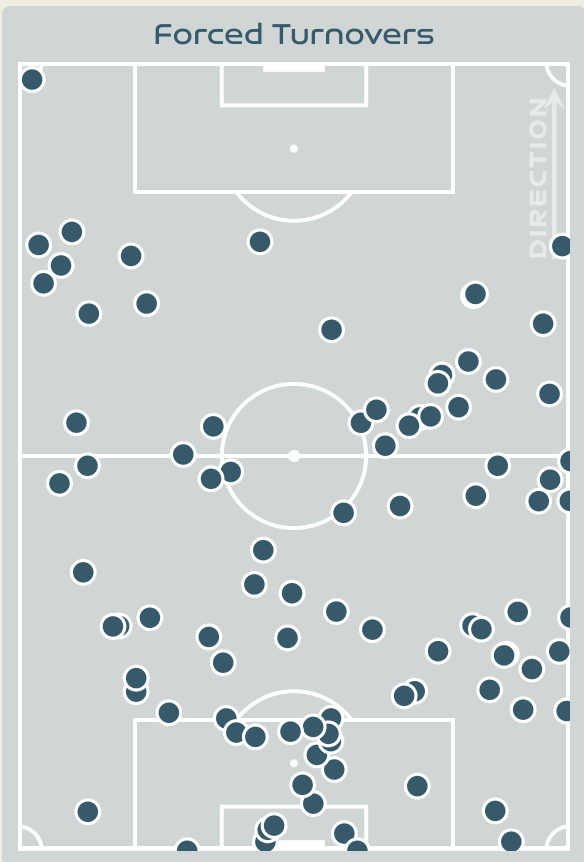
Most Possession Regains

10

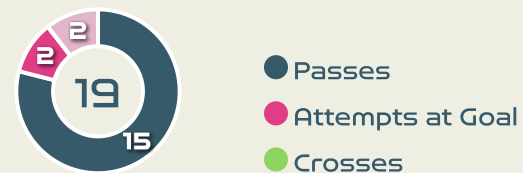
BALLISAGER Stine
RIGHT CENTRE BACK

#	Player	Total Possession Regains
1	CHRISTENSEN Lene	8
2	HASBO Josefine	6
3	BALLISAGER Stine	10
4	SEVECKE Rikke	7
5	BOYE Simone	8
6	HOLMGAARD Karen	8
10	HARDER Pernille	1
11	VEJE Katrine	4
12	KUHL Kathrine	4
14	SORENSEN Noline	1
19	THOMSEN Janni	3
9	VANGSGAARD Amalie	1
17	MADSEN Rikke Marie	1
20	BRUUN Signe	0

Defensive Actions



Blocks



Possession Contests

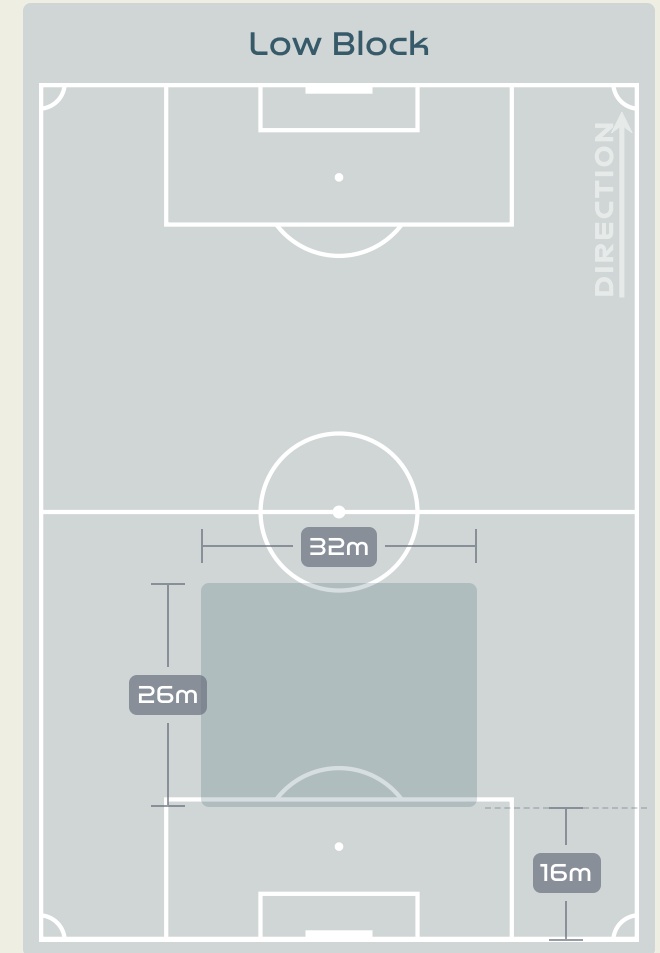
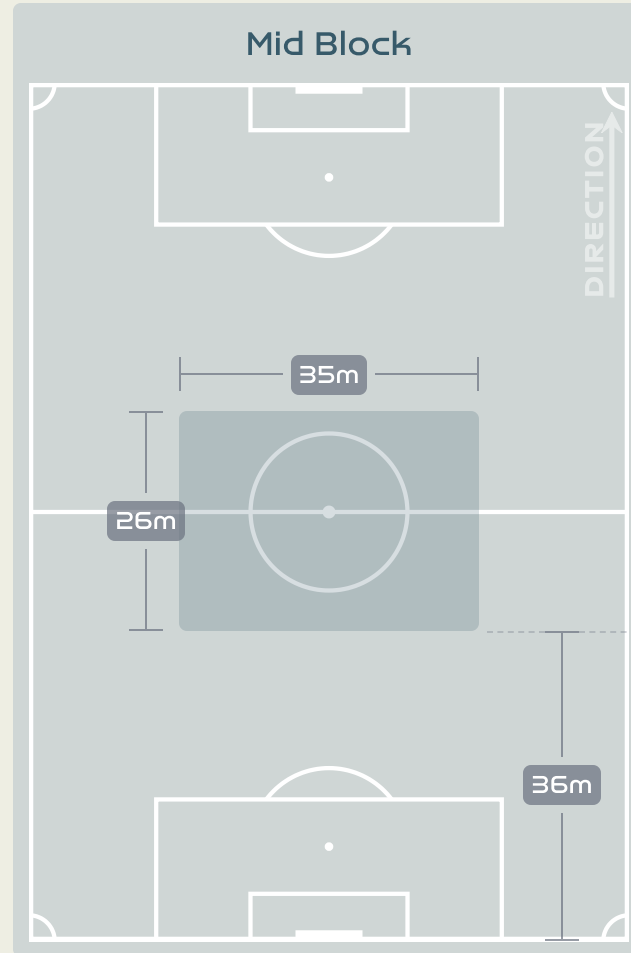
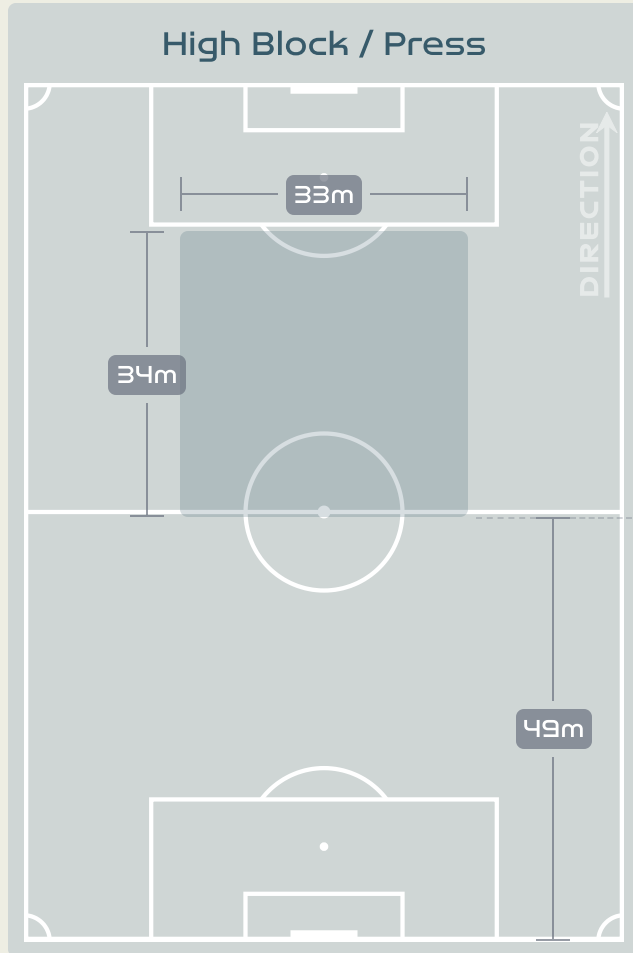


Most Possession Regains

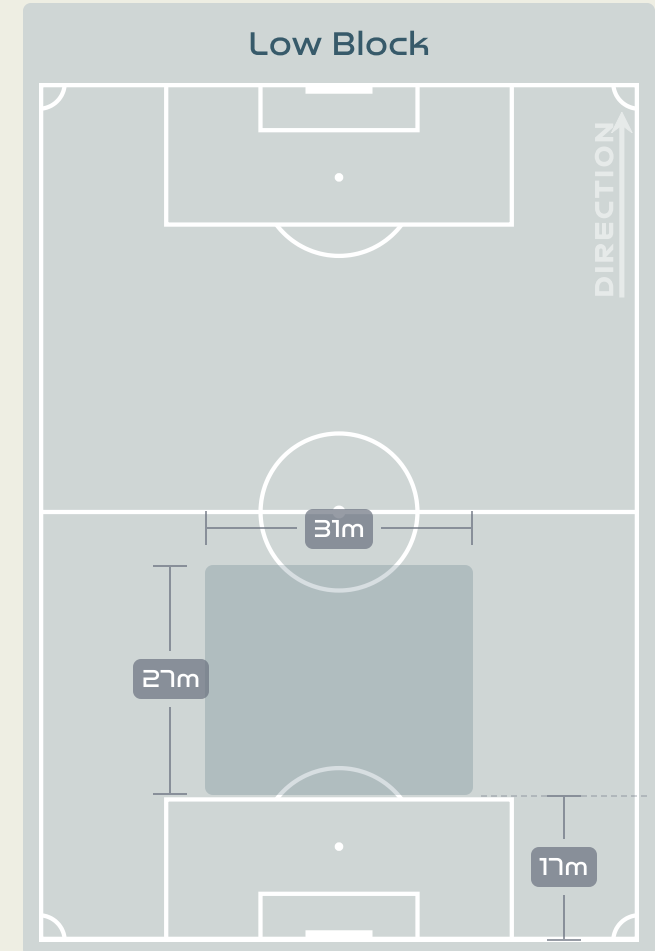
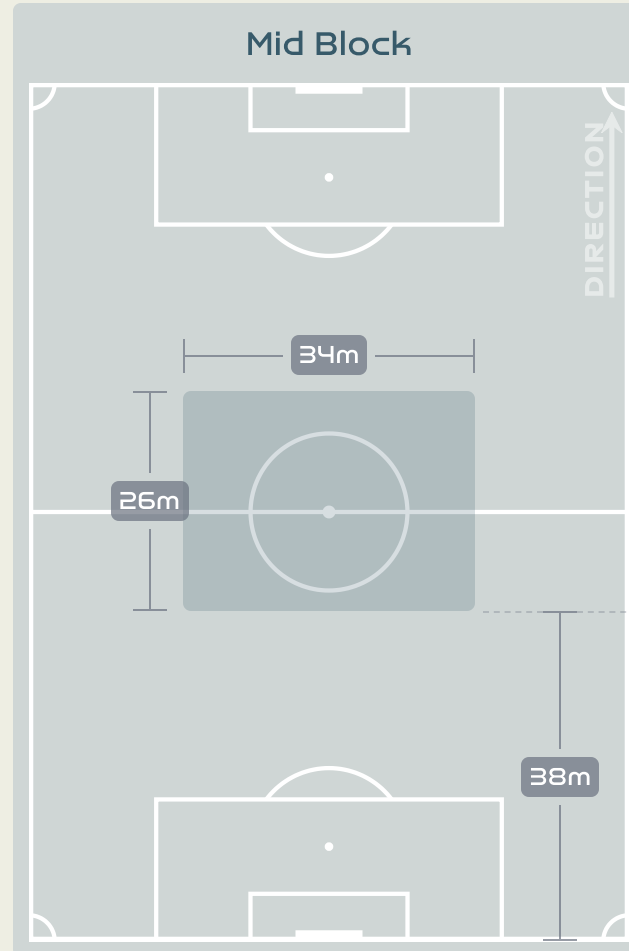
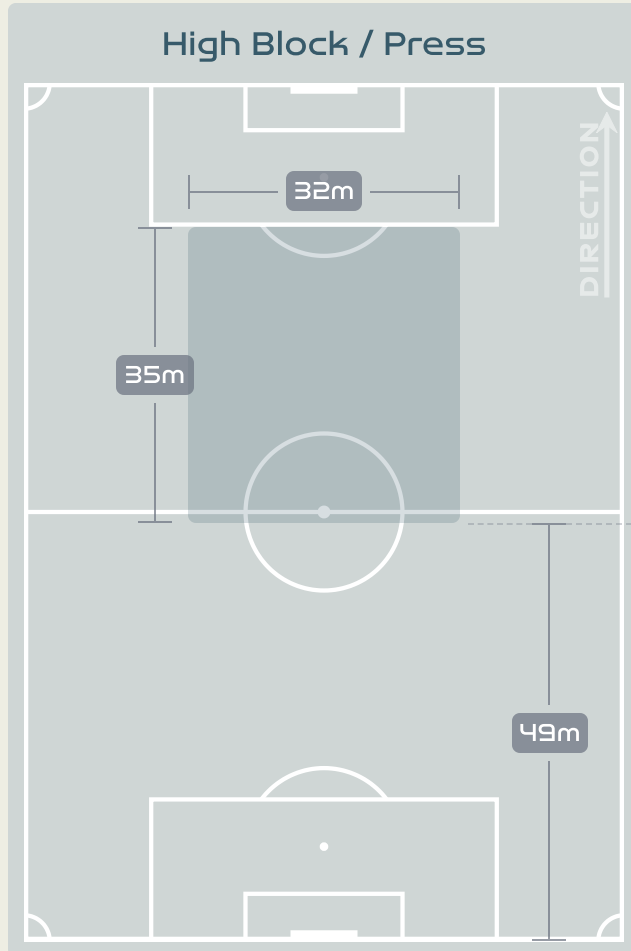
9
YAO Wei
 LEFT CENTRE BACK

#	Player	Total Possession Regains
12	XU Huan	5
2	LI Mengwen	2
6	ZHANG Xin	1
8	YAO Wei	9
10	ZHANG Rui	4
11	WANG Shanshan	9
13	YANG Lina	8
14	LOU Jiahui	5
15	CHEN Qiaozhu	4
17	WU Chengshu	0
19	ZHANG Linyan	3
7	WANG Shuang	1
9	SHEN Mengyu	1
21	GU Yasha	0
23	GAO Chen	0

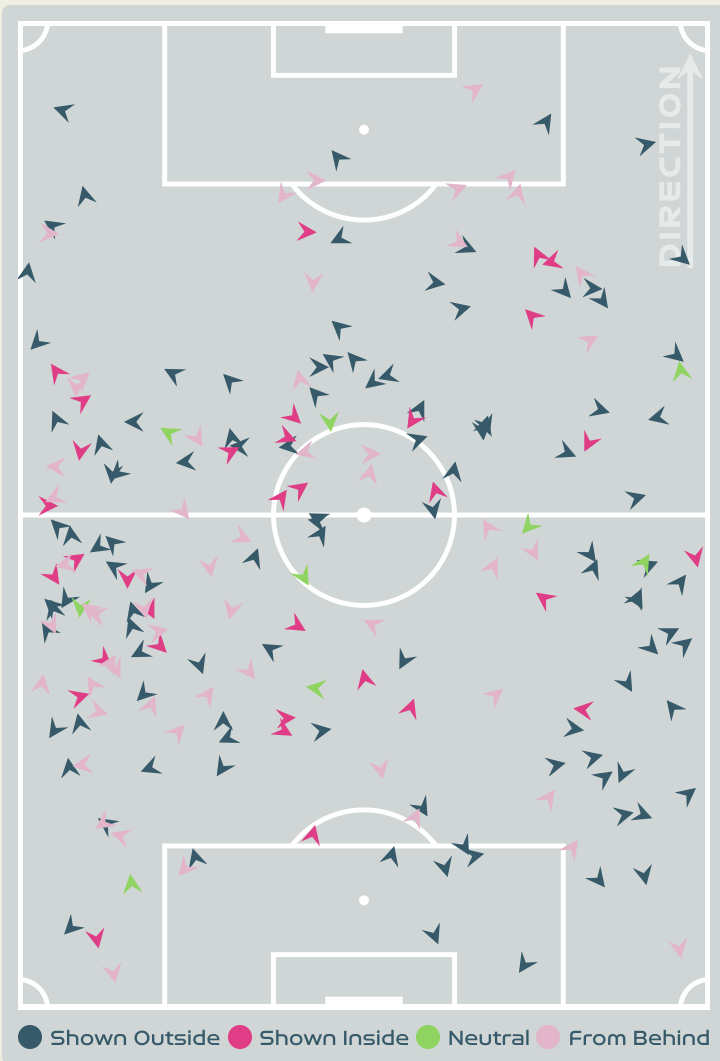
Defensive Line Height & Team Length



Defensive Line Height & Team Length



Defensive Pressure



203	Total Pressures	220
58	Direct Pressures	51
1.29s	Avg Pressure Duration	1.39s
91	Forced Turnovers	92
7.51s	Ball Recovery Time	9.73s
79	Pushing on into Pressing	98
167	Pushing on	253
33	Pressing Direction Inside	36
106	Pressing Direction Outside	121

Most Direct Pressures

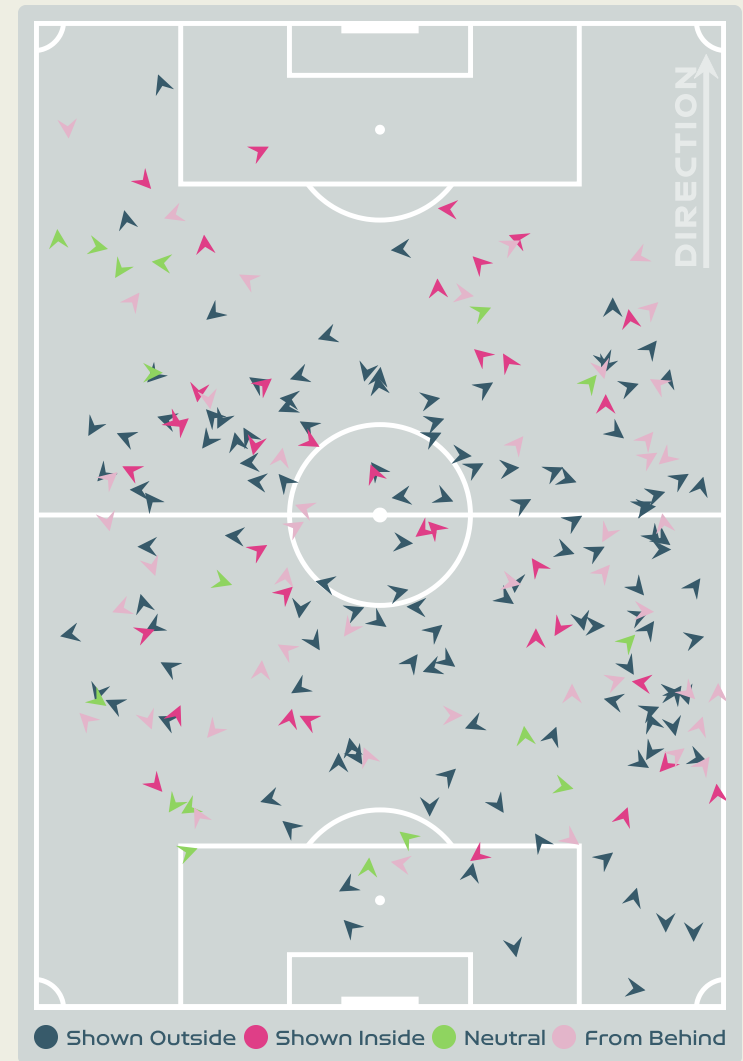
17

HOLMGAARD Karen
DEFENSIVE MIDFIELD CENTRE

Most Direct Pressures

11

YANG Lina
LEFT CENTRE MIDFIELD





GOALKEEPING



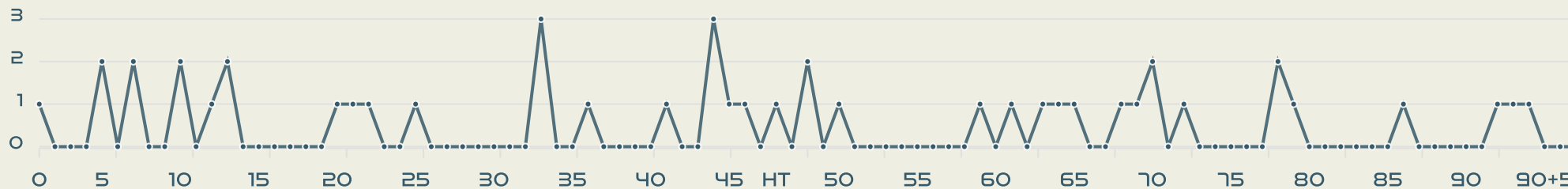
Denmark v China PR



Goalkeeping Involvement



Denmark GK Involvement Timeline

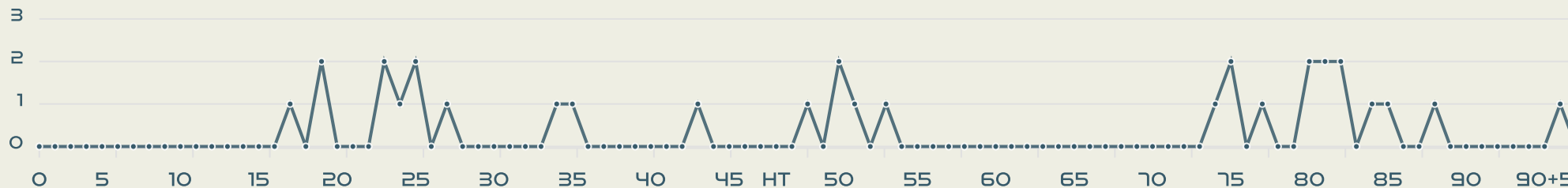


47

Total Involvements



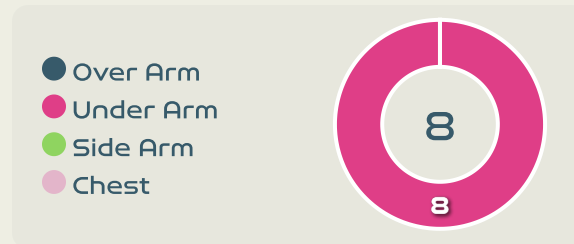
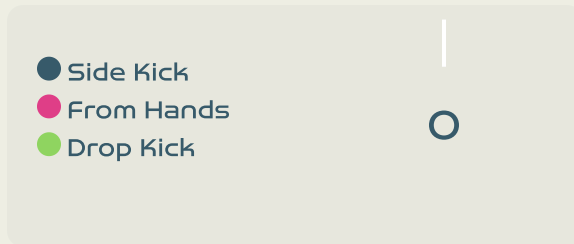
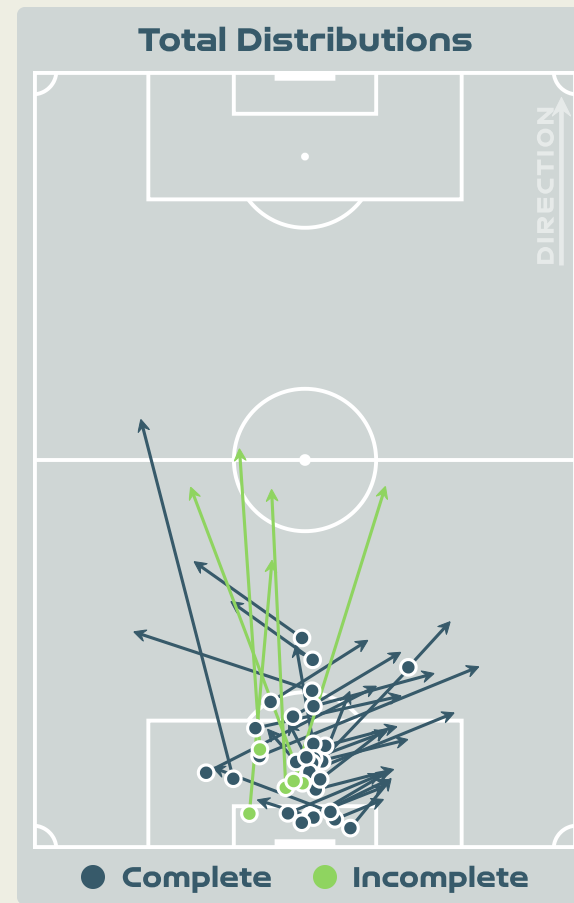
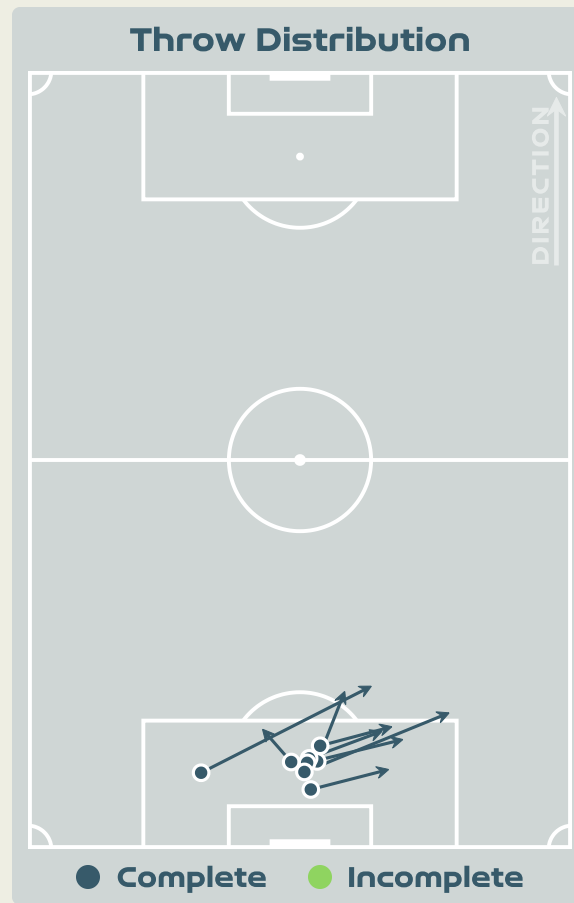
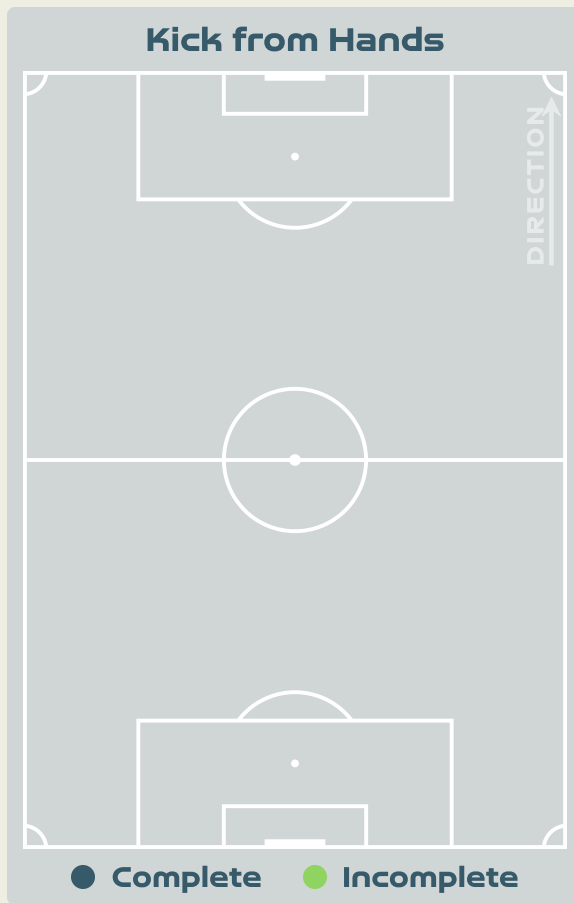
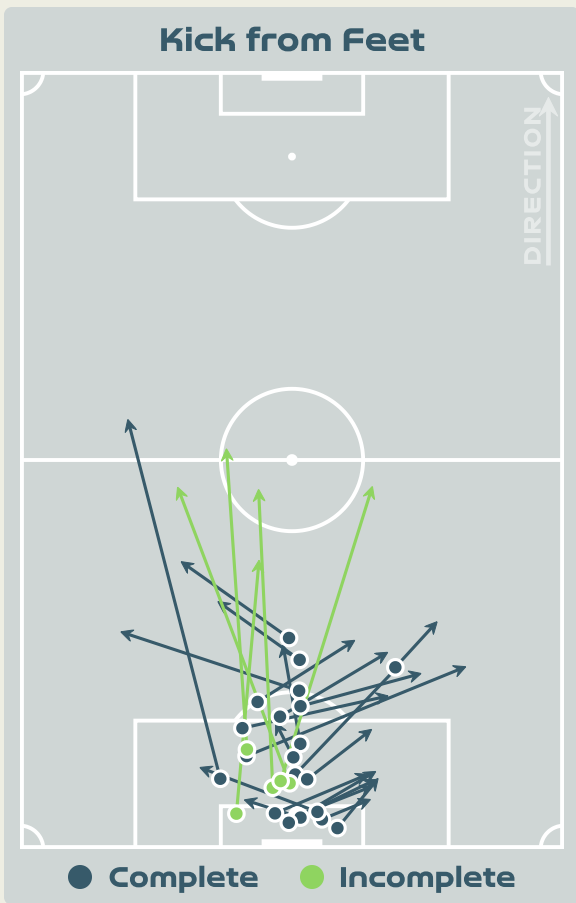
China PR GK Involvement Timeline



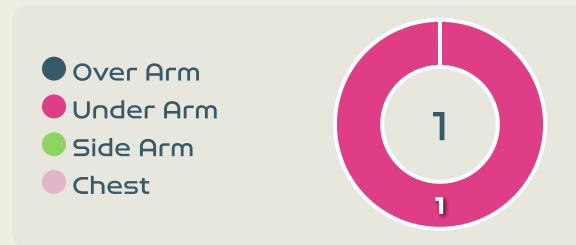
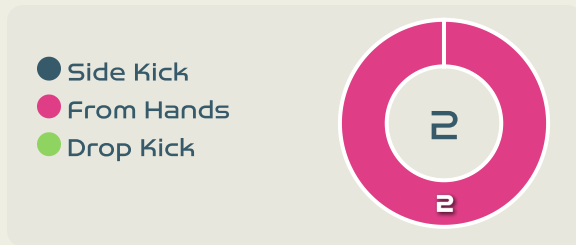
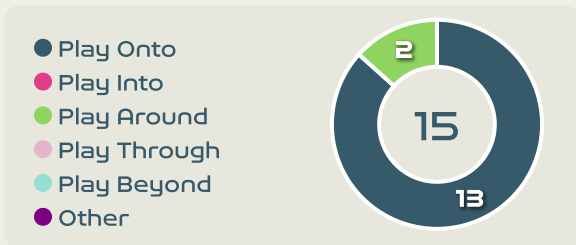
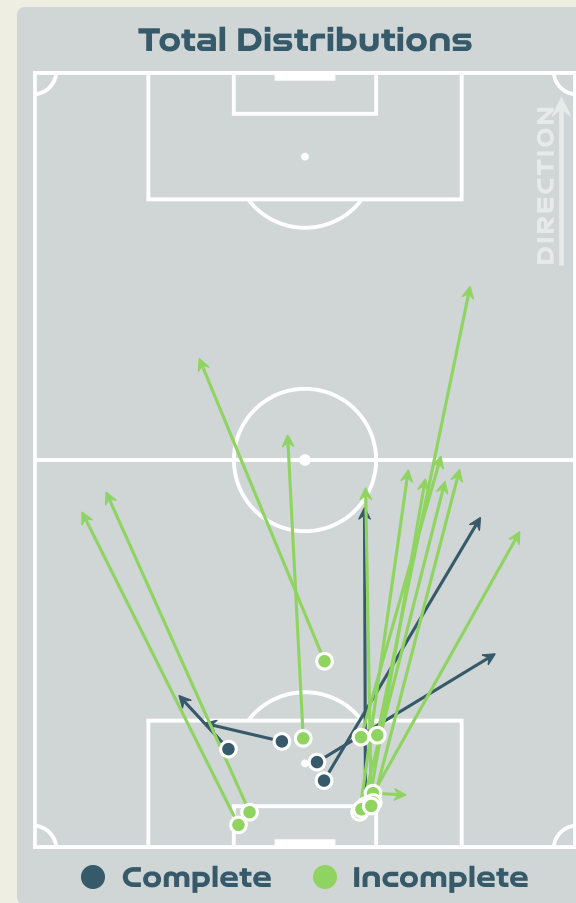
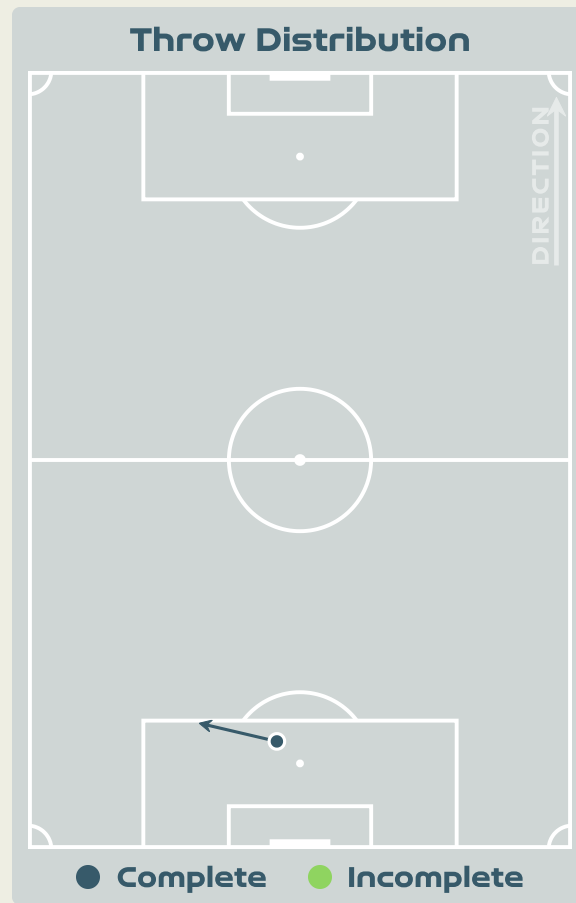
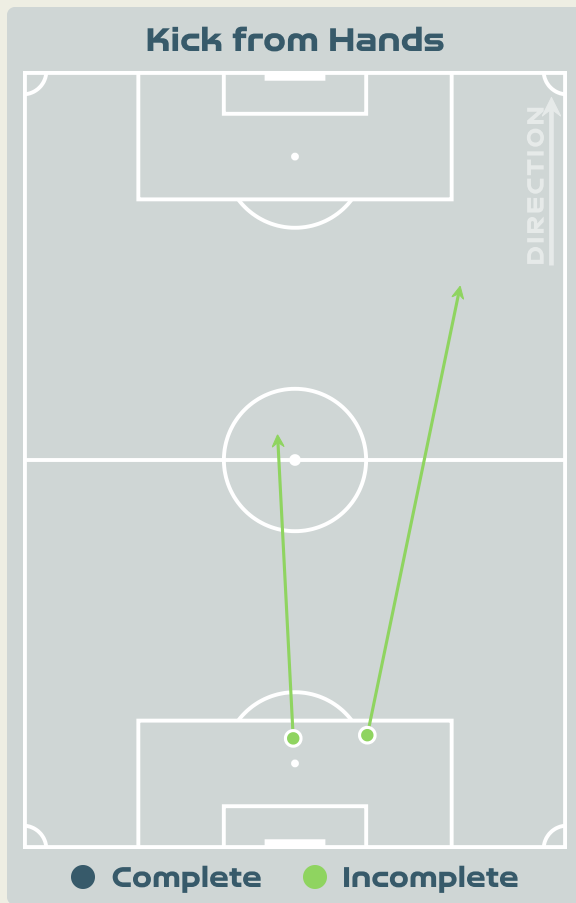
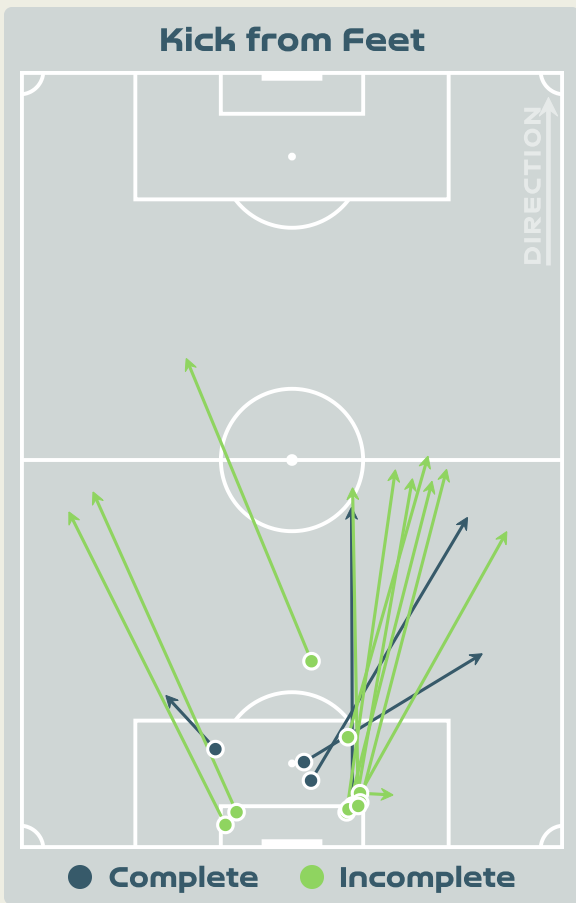
33

Total Involvements

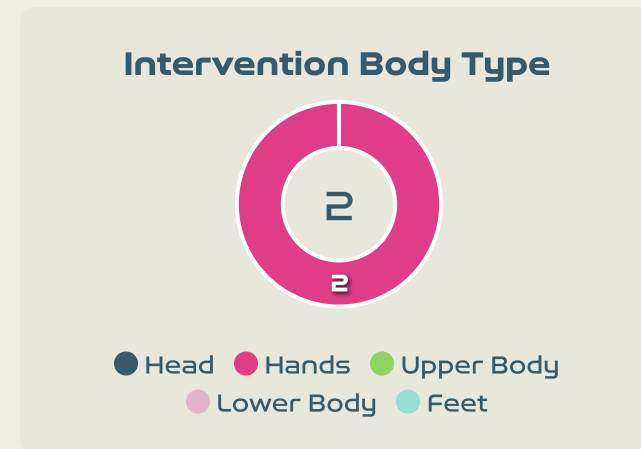
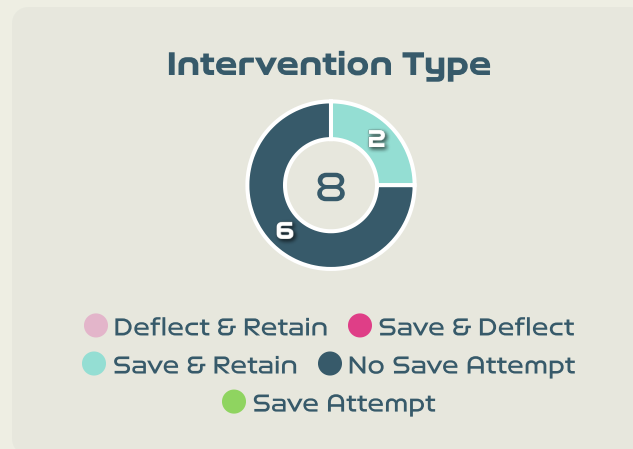
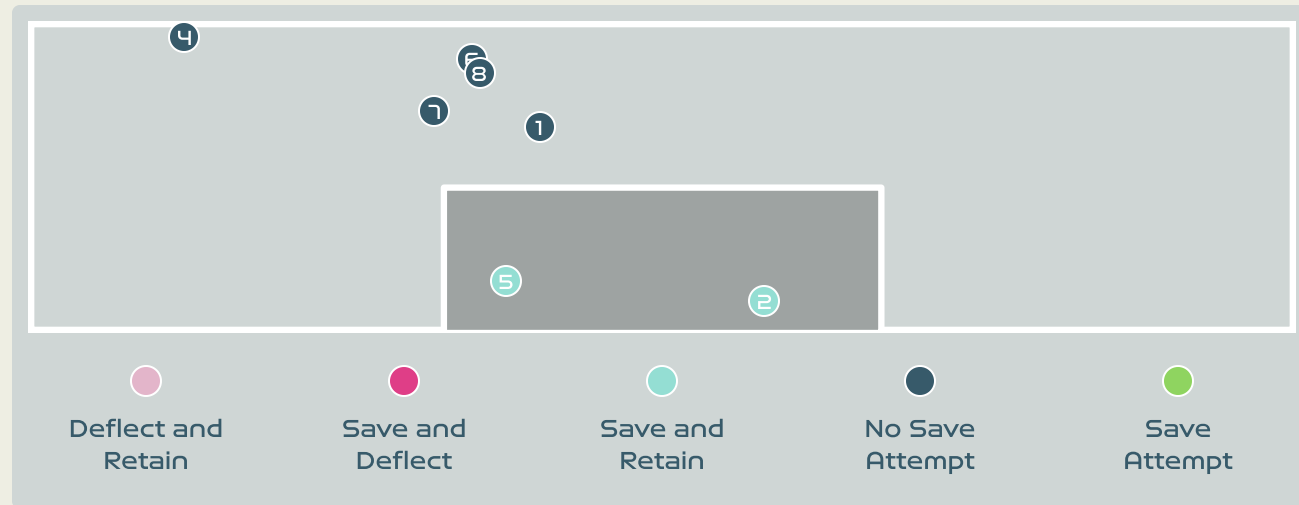
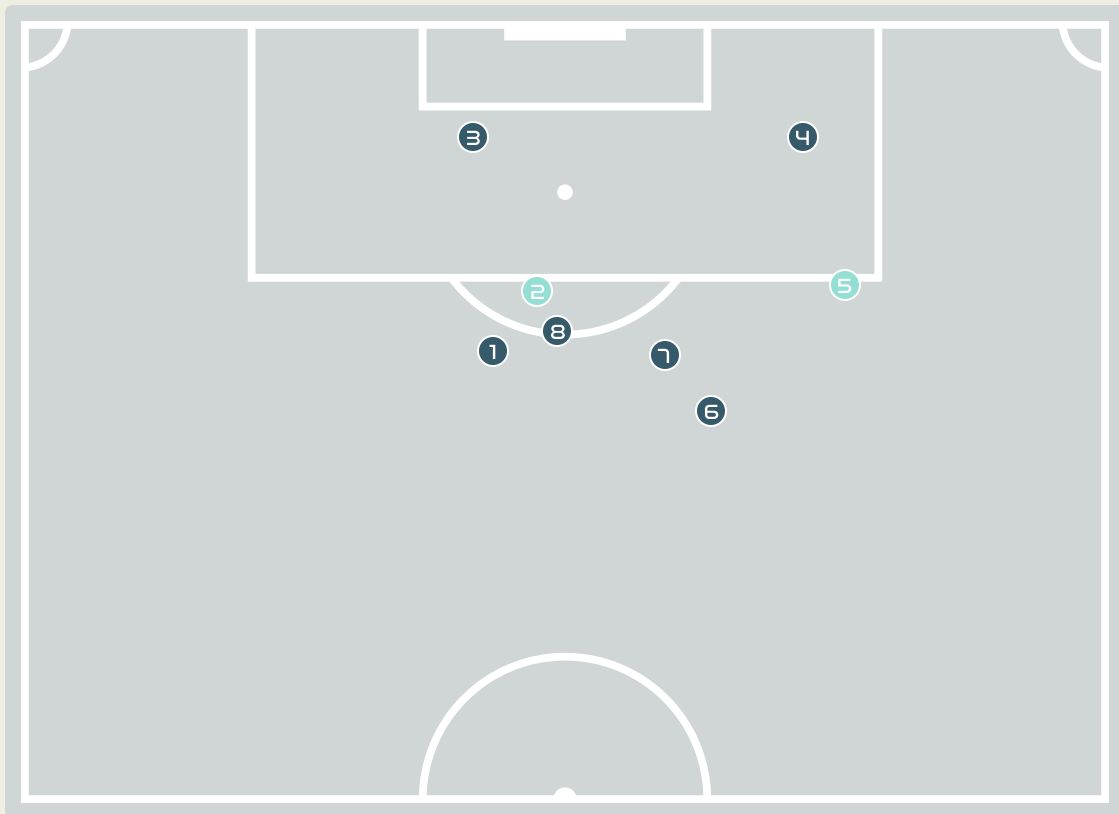
Goalkeeping Distribution



Goalkeeping Distribution



Goal Prevention

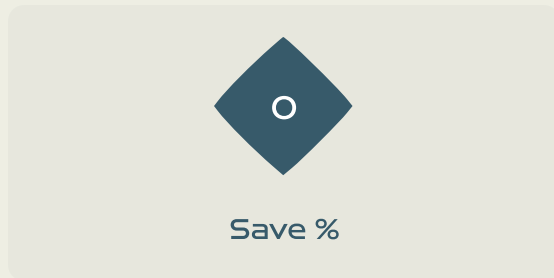
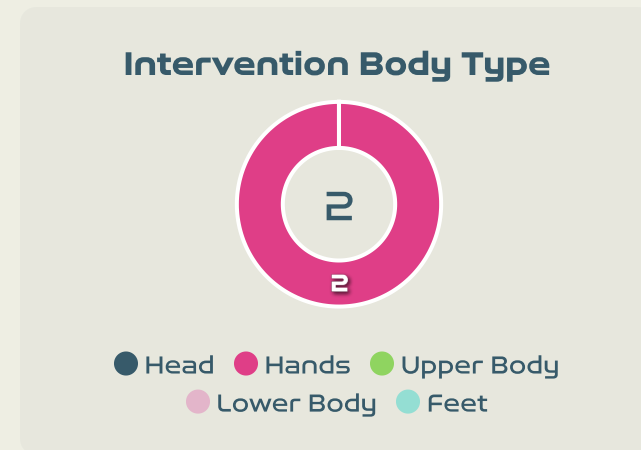
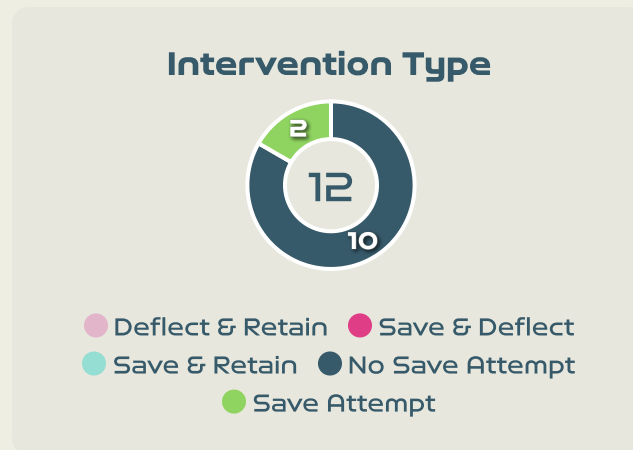
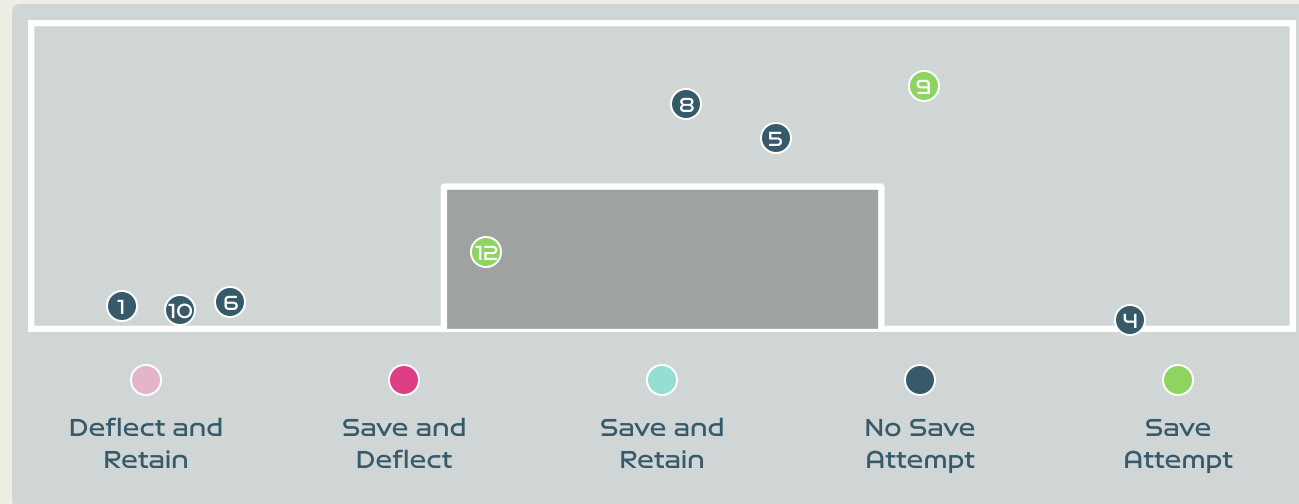
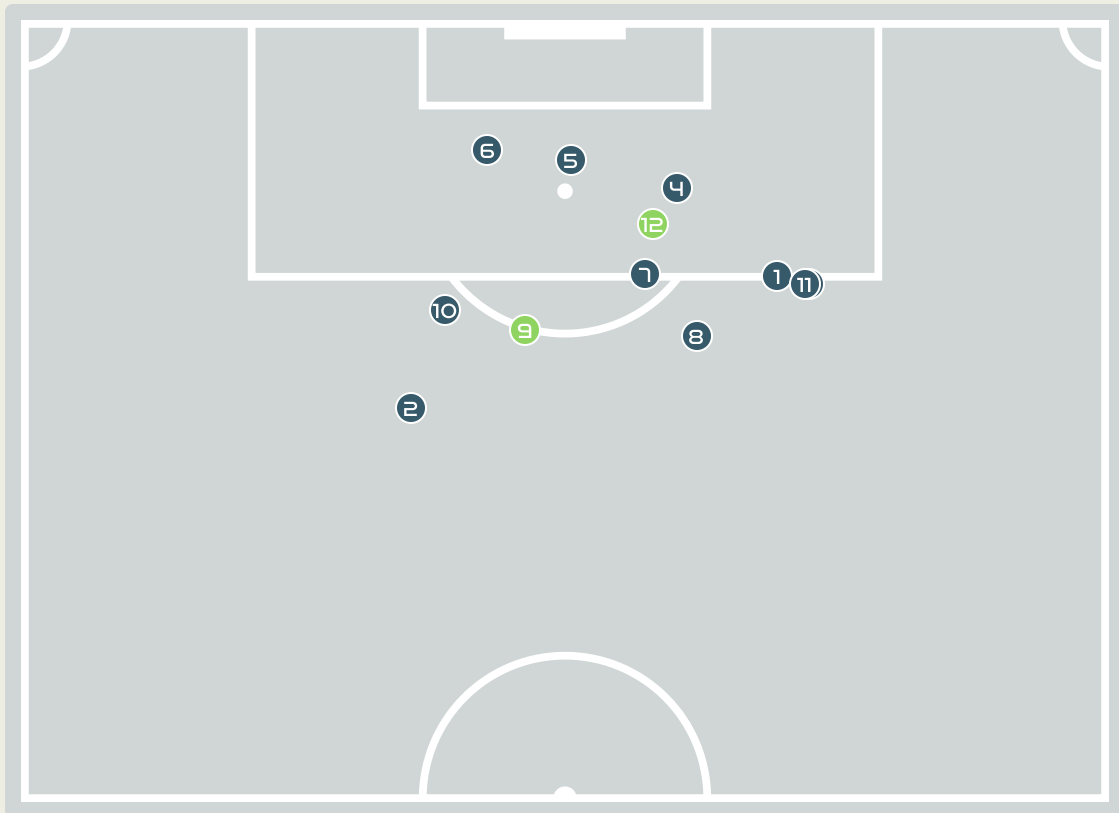


8
Total Attempts on Goal Faced

100
Save %

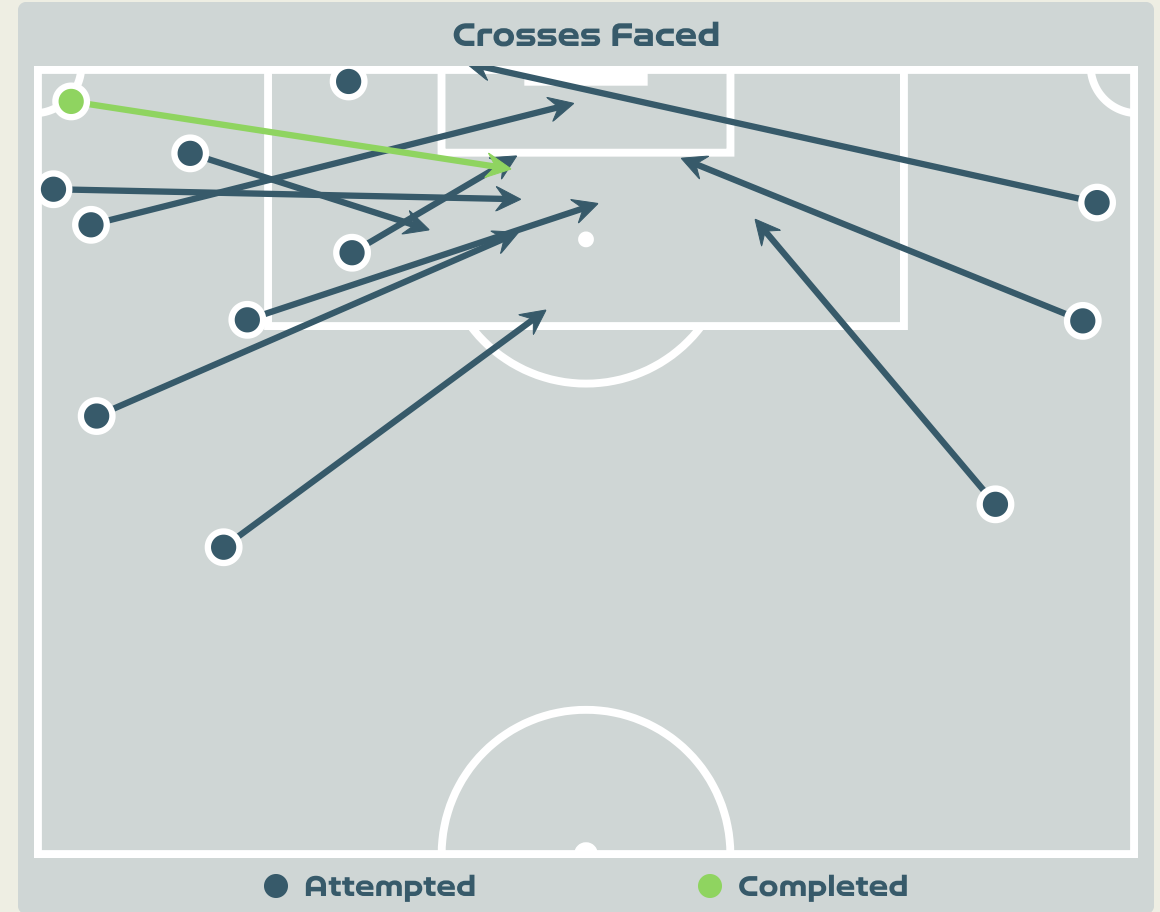
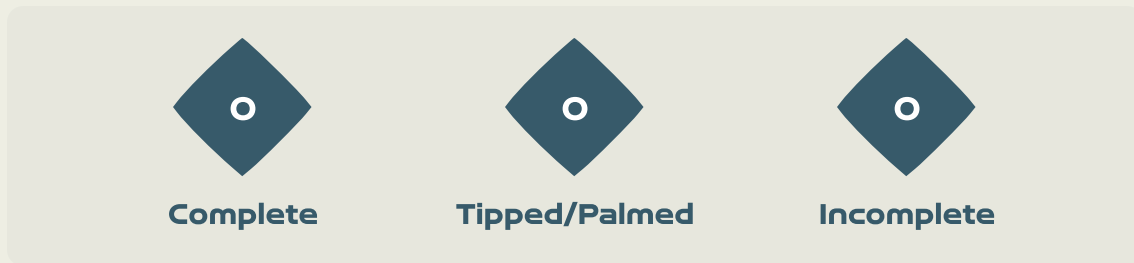
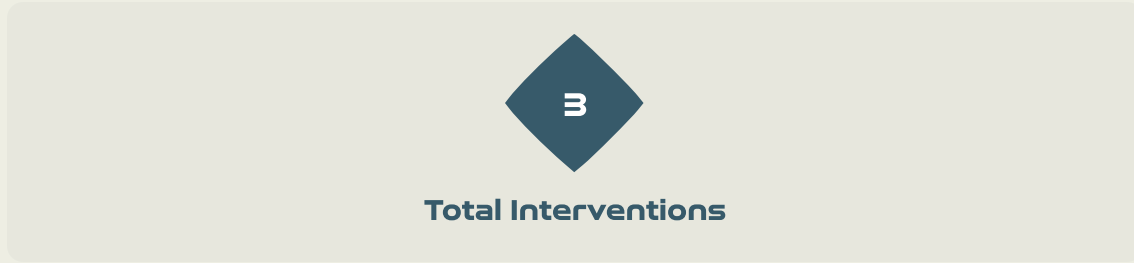
Total Attempts on Goal Faced	Total Goal Interventions	Save & Retain	Deflect & Retain	Save & Deflect	Save Attempt	No Save Attempt
8	2	2	0	0	0	6

Goal Prevention



Total Attempts on Goal Faced	Total Goal Interventions	Save & Retain	Deflect & Retain	Save & Deflect	Save Attempt	No Save Attempt
12	0	0	0	0	2	10

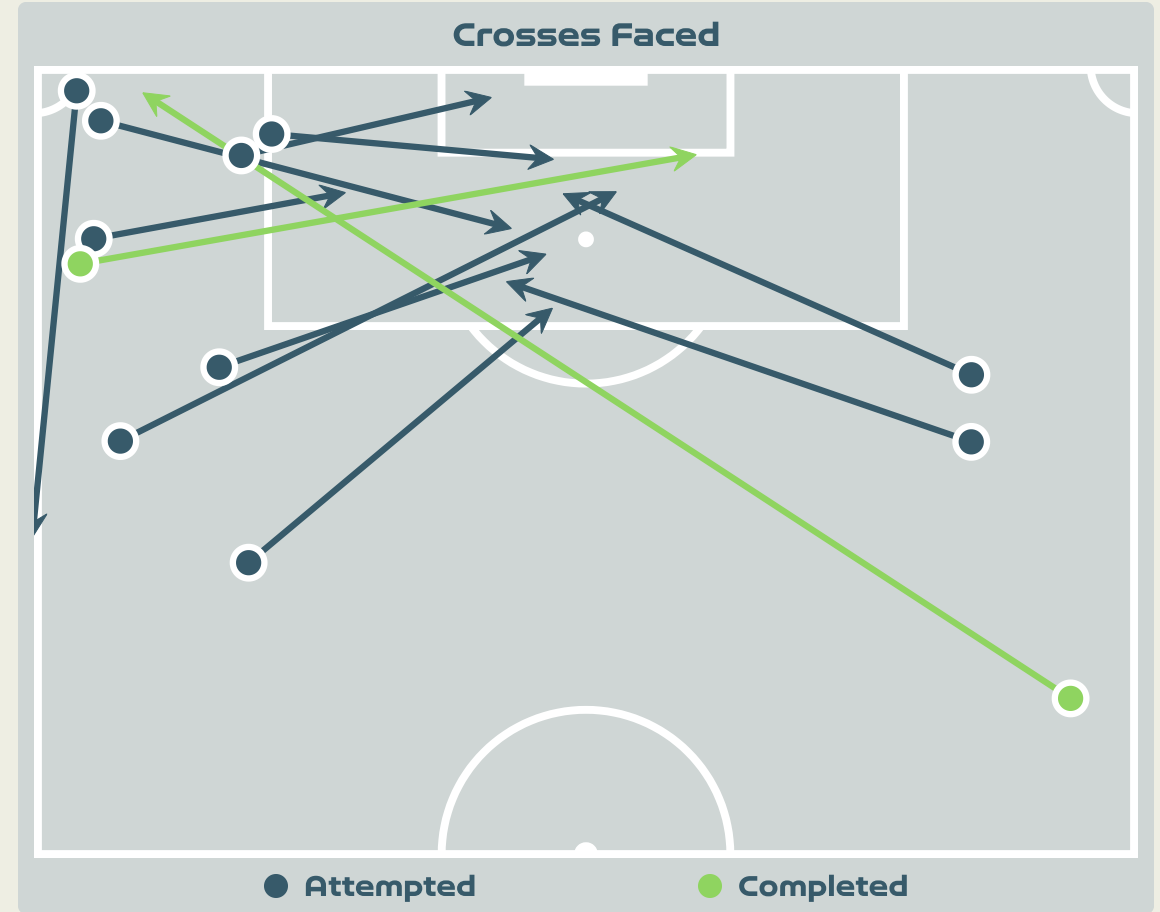
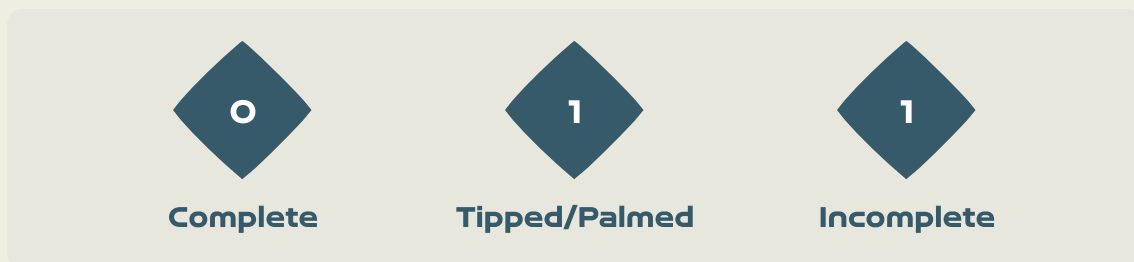
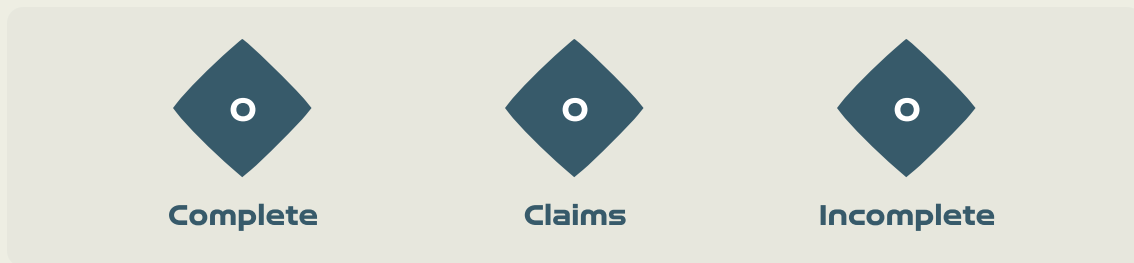
Aerial Control



Delivery Types Faced

Total	In Swing	Out Swing	Driven	Lofted	Cutback	Push
17	6	0	0	8	0	3

Aerial Control



Delivery Types Faced

Total	In Swing	Out Swing	Driven	Lofted	Cutback	Push
18	6	2	0	9	0	1



SET PLAYS

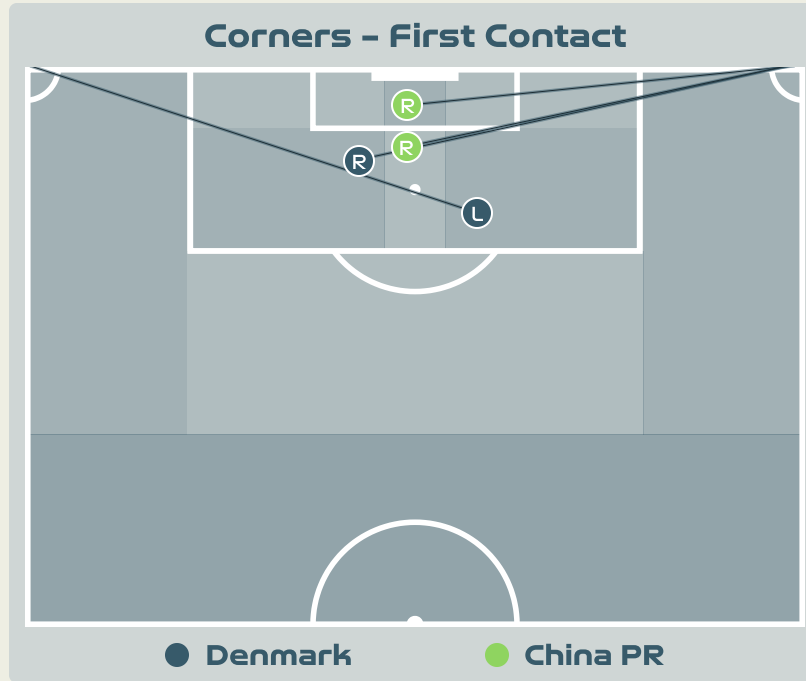
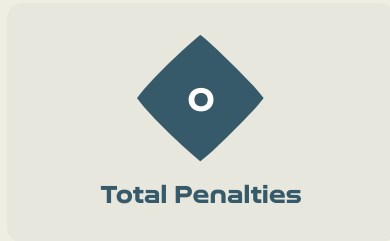


Denmark v China PR





Set Plays - Corners



Delivery Type	From Left Side	From Right Side	Total
Direct to Area	1	5	6
Short	0	0	0
Edge of Penalty Area	0	0	0

Delivery Style	Total
Inswing	2
Outswing	0
Driven	0

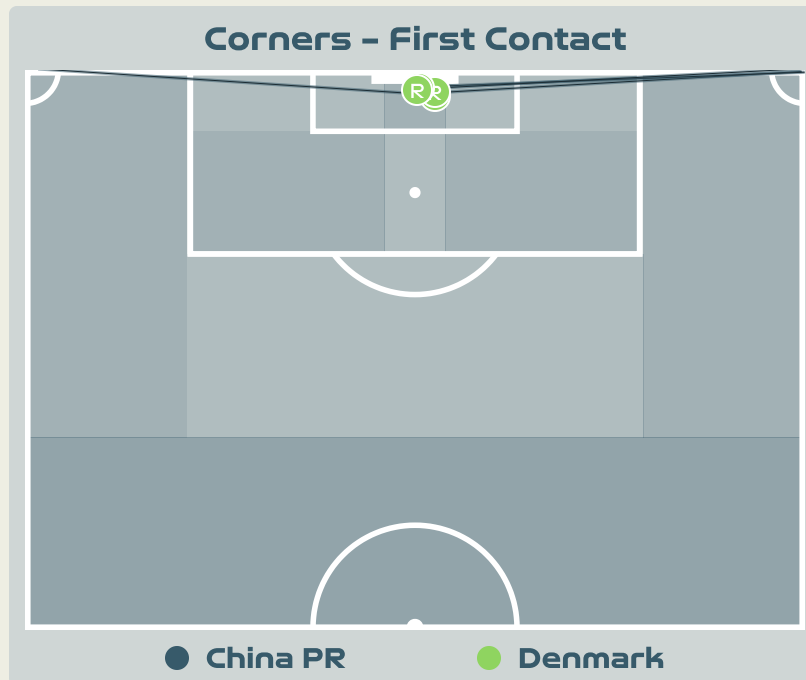
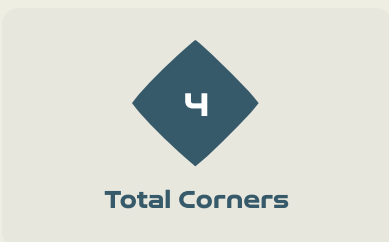
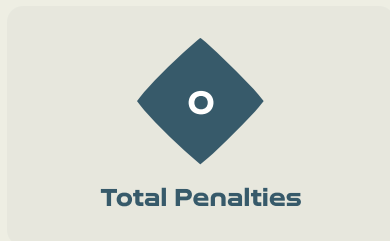
Free Kicks	
Type	Total
Direct	9
Direct (on target)	0
Direct (off target)	0
Indirect	3

First Contacts on Denmark Crosses



Top 5 Player First Contacts		
Player	Team	Total
ZHANG Rui	China PR	2
BOYE Simone	Denmark	1
VANGSGAARD Amalie	Denmark	1

Set Plays - Corners



Delivery Type	From Left Side	From Right Side	Total
Direct to Area	1	3	4
Short	0	0	0
Edge of Penalty Area	0	0	0

Delivery Style	Total
Inswing	4
Outswing	0
Driven	0

Free Kicks	
Type	Total
Direct	9
Direct (on target)	0
Direct (off target)	0
Indirect	3

First Contacts on China PR Crosses



Top 5 Player First Contacts		
Player	Team	Total
CHRISTENSEN Lene	Denmark	2
SEVECKE Rikke	Denmark	1
BOYE Simone	Denmark	1



INDIVIDUAL DATA IN POSSESSION



Denmark v China PR



In Possession - Distributions



#	Player	Passes Attempted	Passes Completed	Pass Completion %	Switches of Play	Crosses Attempted	Crosses Completed	Line Breaks Attempted	Line Breaks Completed	Line Break Completion %	Ball Progressions	Take Ons	Step Ins	Attempts at Goal	Goals
1	CHRISTENSEN Lene	35	30	86%	0	0	0	5	0	0%	0	0	0	0	0
2	HASBO Josefine	25	20	80%	0	0	0	8	4	50%	1	1	0	2	0
3	BALLISAGER Stine	84	70	83%	2	0	0	22	13	59%	0	0	0	0	0
4	SEVECKE Rikke	51	36	71%	0	2	1	21	10	47%	0	0	0	0	0
5	BOYE Simone	78	72	92%	0	0	0	11	7	63%	0	0	0	1	0
6	HOLMGAARD Karen	40	30	75%	0	0	0	9	4	44%	0	0	0	1	0
10	HARDER Pernille	14	10	71%	0	3	1	2	1	50%	2	1	1	2	0
11	VEJE Katrine	81	60	74%	0	8	2	27	11	40%	4	1	3	0	0
12	KUHL Kathrine	33	21	64%	0	0	0	10	6	60%	5	5	0	1	0
14	SORENSEN Nicoline	16	13	81%	0	5	0	5	1	20%	5	3	2	0	0
19	THOMSEN Janni	16	13	81%	0	0	0	2	2	100%	1	1	0	1	0
9	VANGSGAARD Amalie	3	2	67%	0	0	0	0	0	0%	0	0	0	2	1
17	MADSEN Rikke Marie	5	3	60%	0	0	0	1	0	0%	0	0	0	1	0
20	BRUUN Signe	7	5	71%	0	0	0	2	2	100%	0	0	0	1	0

In Possession - Offers & Receptions



			Offer movement types						
#	Player	Total Offers	In Front	In Between	Out to In	In to Out	In Behind	No Movement	Offers Received
1	CHRISTENSEN Lene	19	0	0	0	0	0	19	6
2	HASBO Josefine	24	5	10	1	3	3	2	4
3	BALLISAGER Stine	32	5	0	0	0	0	27	12
4	SEVECKE Rikke	11	5	2	0	0	1	3	5
5	BOYE Simone	12	2	1	0	0	0	9	7
6	HOLMGAARD Karen	46	28	13	1	1	2	1	12
10	HARDER Pernille	67	2	14	1	2	42	6	8
11	VEJE Katrine	26	8	1	1	0	4	12	14
12	KUHL Kathrine	30	8	15	1	2	1	3	13
14	SORENSEN Nicoline	45	2	2	0	2	25	14	9
19	THOMSEN Janni	46	5	2	1	2	26	10	4
9	VANGSGAARD Amalie	4	0	1	0	1	1	1	0
17	MADSEN Rikke Marie	8	0	2	0	0	4	2	3
20	BRUUN Signe	7	0	1	0	0	6	0	3

In Possession - Distributions



#	Player	Passes Attempted	Passes Completed	Pass Completion %	Switches of Play	Crosses Attempted	Crosses Completed	Line Breaks Attempted	Line Breaks Completed	Line Break Completion %	Ball Progressions	Take Ons	Step Ins	Attempts at Goal	Goals
12	XU Huan	18	5	28%	0	0	0	6	1	16%	0	0	0	0	0
2	LI Mengwen	49	40	82%	0	0	0	13	7	53%	1	1	0	1	0
6	ZHANG Xin	21	14	67%	0	2	0	3	0	0%	1	1	0	0	0
8	YAO Wei	35	26	74%	0	2	0	10	5	50%	1	0	1	0	0
10	ZHANG Rui	55	40	73%	0	1	0	20	13	65%	3	2	1	1	0
11	WANG Shanshan	38	26	68%	0	0	0	13	7	53%	0	0	0	0	0
13	YANG Lina	37	33	89%	2	0	0	12	10	83%	0	0	0	0	0
14	LOU Jiahui	19	18	95%	0	3	1	4	3	75%	2	1	1	0	0
15	CHEN Qiaozhu	39	28	72%	0	5	0	24	11	45%	1	0	1	1	0
17	WU Chengshu	20	14	70%	0	0	0	4	3	75%	3	3	0	1	0
19	ZHANG Linyan	26	20	77%	0	1	0	7	5	71%	2	1	1	1	0
7	WANG Shuang	22	15	68%	0	3	0	7	5	71%	0	0	0	3	0
9	SHEN Mengyu	9	7	78%	0	0	0	2	1	50%	0	0	0	0	0
21	GU Yasha	3	1	33%	0	0	0	1	1	100%	0	0	0	0	0
23	GAO Chen	5	4	80%	0	0	0	4	3	75%	0	0	0	0	0

In Possession - Offers & Receptions



			Offer movement types						
#	Player	Total Offers	In Front	In Between	Out to In	In to Out	In Behind	No Movement	Offers Received
12	XU Huan	3	0	0	0	0	0	3	1
2	LI Mengwen	21	10	0	0	1	3	7	8
6	ZHANG Xin	14	6	3	0	0	2	3	8
8	YAO Wei	6	1	0	0	0	0	5	3
10	ZHANG Rui	45	27	13	0	0	1	4	14
11	WANG Shanshan	6	0	0	0	0	0	6	5
13	YANG Lina	37	25	7	0	1	0	4	13
14	LOU Jiahui	56	6	23	3	5	10	9	15
15	CHEN Qiaozhu	25	9	0	0	0	4	12	9
17	WU Chengshu	13	2	4	0	2	5	0	4
19	ZHANG Linyan	33	2	10	1	5	9	6	11
7	WANG Shuang	14	3	6	0	1	3	1	9
9	SHEN Mengyu	13	2	1	0	0	3	7	4
21	GU Yasha	3	2	0	0	0	1	0	1
23	GAO Chen	1	1	0	0	0	0	0	0



INDIVIDUAL DATA OUT OF POSSESSION



Denmark v China PR



Out of Possession



#	Player	Tackles Made / Won	Blocks	Interceptions	Pressing Direct	Pressing Indirect	Duels Won - Aerial	Duels Won - Physical	Possession Contests won	Clearances	Loose Ball Receptions	Pushing On	Pushing On into Pressing	Possession Regains	Possession Interrupted
1	CHRISTENSEN Lene	0 / 0	0	0	0	0	0	0	0	1	4	0	0	8	0
2	HASBO Josefine	7 / 2	3	0	6	14	2	0	2	5	14	9	6	6	3
3	BALLISAGER Stine	2 / 1	3	2	2	6	1	0	4	10	10	6	1	10	7
4	SEVECKE Rikke	2 / 1	7	0	1	16	0	0	2	7	2	20	9	7	8
5	BOYE Simone	4 / 1	4	0	4	5	7	0	7	12	9	5	3	8	11
6	HOLMGAARD Karen	8 / 2	2	0	17	10	7	0	8	5	16	3	1	8	5
10	HARDER Pernille	3 / 1	1	0	3	24	3	0	3	0	8	31	18	1	1
11	VEJE Katrine	6 / 3	2	0	7	2	2	0	3	3	11	19	7	4	4
12	KUHL Kathrine	2 / 1	5	0	6	20	1	0	4	1	7	28	14	4	3
14	SORENSEN Nicoline	1 / 0	2	0	5	15	0	0	1	1	6	20	11	1	1
19	THOMSEN Janni	1 / 0	1	2	3	21	4	0	5	2	10	10	6	3	2
9	VANGSGAARD Amalie	0 / 0	0	0	0	3	1	0	1	1	3	1	0	1	1
17	MADSEN Rikke Marie	2 / 0	0	0	2	5	1	0	1	1	0	7	2	1	0
20	BRUUN Signe	2 / 0	0	0	2	4	2	0	2	0	0	8	1	0	1

Out of Possession

China PR



#	Player	Tackles Made / Won	Blocks	Interceptions	Pressing Direct	Pressing Indirect	Duels Won - Aerial	Duels Won - Physical	Possession Contests won	Clearances	Loose Ball Receptions	Pushing On	Pushing On into Pressing	Possession Regains	Possession Interrupted
12	XU Huan	0 / 0	0	0	0	0	0	0	0	1	4	0	0	5	1
2	LI Mengwen	3 / 1	0	1	5	11	0	0	0	5	8	22	6	2	6
6	ZHANG Xin	1 / 0	0	0	2	14	0	0	1	2	6	6	5	1	2
8	YAO Wei	0 / 0	2	2	1	7	0	1	1	12	3	16	2	9	8
10	ZHANG Rui	8 / 0	4	3	10	26	3	0	4	6	17	46	16	4	9
11	WANG Shanshan	3 / 1	1	1	5	1	3	0	3	16	7	8	2	9	10
13	YANG Lina	11 / 5	4	2	11	11	1	0	2	4	12	38	7	8	11
14	LOU Jiahui	1 / 0	5	1	4	20	3	0	4	1	3	20	15	5	5
15	CHEN Qiaozhu	1 / 0	2	1	2	7	4	2	6	8	15	19	3	4	6
17	WU Chengshu	2 / 0	0	0	4	25	1	0	1	1	9	32	16	0	1
19	ZHANG Linyan	5 / 2	1	0	5	30	0	0	0	1	7	31	16	3	2
7	WANG Shuang	0 / 0	1	0	0	10	0	0	1	0	5	4	3	1	0
9	SHEN Mengyu	0 / 0	1	1	0	4	0	0	0	0	2	5	3	1	1
21	GU Yasha	0 / 0	0	0	1	1	0	0	0	0	2	4	2	0	0
23	GAO Chen	1 / 0	0	0	1	2	0	0	0	2	1	2	2	0	2



INDIVIDUAL DATA PHYSICAL



Denmark v China PR



Physical Data



#	Player	Total Distance (m)	Zone 1: 0-7 km/h (m)	Zone 2: 7-13km/h (m)	Zone 3: 13-19km/h (m)	Zone 4: 19-23km/h (m)	Zone 5: 23+ km/h (m)	High Speed Runs (Zone 4)	Sprints (Zone 5)	Top Speed (km/h)
1	CHRISTENSEN Lene	5148.4	3438.6	1289.2	402.6	18.0	0	36.0	1.0	24.0
2	HASBO Josefine	12494.2	2768.7	5103.9	3798.2	714.7	107.5	266.0	51.0	26.9
3	BALLISAGER Stine	10173.7	3285.1	4217.0	2155.8	324.5	190.2	194.0	36.0	28.3
4	SEVECKE Rikke	10547.9	3519.8	4276.1	2294.2	410.3	47.5	175.0	29.0	25.9
5	BOYE Simone	9584.1	3365.0	4171.0	1753.9	241.5	52.7	155.0	25.0	26.8
6	HOLMGAARD Karen	11584.3	3405.8	4455.3	2926.2	611.7	185.3	236.0	45.0	32.9
10	HARDER Pernille	10709.4	4062.1	3165.7	2586.3	629.7	265.6	238.0	60.0	29.0
11	VEJE Katrine	11633.8	3380.8	4778.0	2724.6	575.9	174.5	201.0	45.0	28.2
12	KUHL Kathrine	7811.7	2118.5	3438.7	1715.4	496.8	43.0	141.0	32.0	26.5
14	SORENSEN Nicoline	8513.5	2831.6	2991.6	1883.2	560.2	246.0	168.0	50.0	31.6
19	THOMSEN Janni	9796.4	2988.9	3445.4	2463.8	621.1	278.2	200.0	54.0	28.4
9	VANGSGAARD Amalie	1471.5	478.7	523.0	341.4	109.5	19.1	25.0	8.0	26.3
17	MADSEN Rikke Marie	2937.5	700.3	1063.9	745.5	310.8	116.9	59.0	27.0	28.7
20	BRUUN Signe	3520.6	1278.3	1159.0	849.5	202.1	31.7	78.0	16.0	25.5

Physical Data



#	Player	Total Distance (m)	Zone 1: 0-7 km/h (m)	Zone 2: 7-13km/h (m)	Zone 3: 13-19km/h (m)	Zone 4: 19-23km/h (m)	Zone 5: 23+ km/h (m)	High Speed Runs (Zone 4)	Sprints (Zone 5)	Top Speed (km/h)
12	XU Huan	4936.1	3928.2	819.4	183.1	5.4	0	30.0	1.0	28.3
2	LI Mengwen	9236.8	2918.8	3879.4	1864.0	429.5	144.1	167.0	33.0	27.4
6	ZHANG Xin	5893.2	1509.8	2467.5	1485.7	353.6	76.0	122.0	30.0	25.9
8	YAO Wei	9810.3	3460.1	4365.6	1634.4	223.7	126.6	160.0	27.0	27.0
10	ZHANG Rui	11153.5	3389.5	3785.5	3366.1	581.1	31.2	242.0	44.0	25.0
11	WANG Shanshan	9360.3	3782.5	3630.8	1570.7	315.4	60.8	138.0	23.0	26.0
13	YANG Lina	11149.4	3360.4	4766.4	2426.1	498.4	99.2	205.0	38.0	26.4
14	LOU Jiahui	9846.3	2838.7	3232.6	3022.8	586.8	164.4	241.0	55.0	26.2
15	CHEN Qiaozhu	11156.7	3277.8	4336.6	2799.2	608.0	133.9	218.0	44.0	29.2
17	WU Chengshu	9999.8	3384.9	3632.9	2404.0	458.0	120.0	195.0	40.0	26.4
19	ZHANG Linyan	10797.7	3679.8	3662.6	2494.3	754.8	206.2	219.0	60.0	29.4
7	WANG Shuang	5391.5	1954.4	1696.2	1323.6	301.9	115.9	112.0	25.0	28.9
9	SHEN Mengyu	2345.4	570.9	836.1	616.6	253.1	68.7	60.0	20.0	26.5
21	GU Yasha	809.9	208.8	223.1	297.2	80.8	0	25.0	6.0	24.1
23	GAO Chen	1240.5	417.4	517.5	208.0	38.2	59.3	24.0	4.0	29.0

