



FIFA
U-20 WORLD CUP
ARGENTINA 2023



Senegal 0 - 1 Japan

Group C - Match 6

21 May 2023

18:00 Kick Off

Estadio Único Diego Armando Maradona

POST MATCH SUMMARY REPORT

Match Summary - Teams

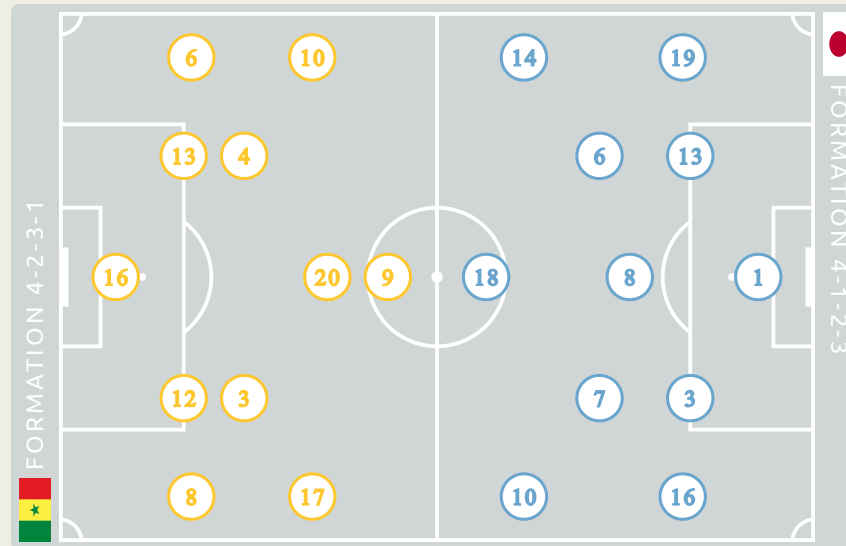


STARTING

16	GK	NDIAYE Mamour	
3	DF	DIARRA Djibril	
4	MF	CAMARA Mamadou	
6	DF	BASSE Souleymane	
8	DF	DIOP Amidou	
9	FW	FAYE Souleymane	
10	FW	DIALLO Samba (C)	↓ 73'
12	DF	NDIAYE Babacar	■ 47'
13	DF	SANO Seydou	
17	FW	FAYE Mame Mor	↓ 73'
20	MF	DIOP Pape Demba	

SUBSTITUTES

1	GK	NIANG Alioune	
21	GK	SALL Ndiack	
2	FW	GUEYE Mouhamed	
5	MF	SECK Ibrahima	↑ 73'
7	FW	DIOUF Oumar	
11	FW	GNING Mamadou	
14	MF	NGOM Libasse	↑ 73' ■ 74'
15	MF	CISSOKO Ibrahima	
18	DF	GUEYE Mouhamed	
19	DF	MBOW Mapenda	



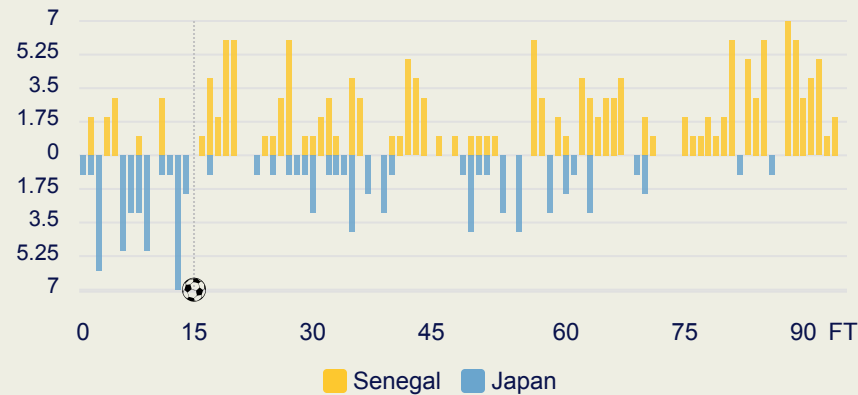
STARTING

	KIMURA Ryoya	GK	1	
	TANAKA Hayato	DF	3	
↓ 90+1'	FUKUI Taichi	MF	6	
⚽ 15'	(C) MATSUKI Kuryu	MF	7	
↓ 90+4'	SANO Kodai	MF	8	
↓ 80'	KITANO Sota	MF	10	
	CHASE Anrie	DF	13	
↓ 46'	EINAGA Takatora	MF	14	
	TAKAHASHI Niko	DF	16	
↓ 80'	KUMATA Naoki	FW	18	
	TAKAI Kota	DF	19	

SUBSTITUTES

	KANOSHIMA Yu	GK	12	
	HARUNA Ryusei	GK	21	
↑ 90+4'	MATSUDA Hayate	DF	2	
	KIKUCHI Shuta	DF	4	
↑ 46'	YAMANE Riku	MF	5	
↑ 80'	FUKUDA Shio	FW	9	
	SAKAMOTO Isa	FW	11	
↑ 80'	YASHIKI Yusei	DF	15	
	MATSUMURA Kosuke	MF	17	
↑ 90+1'	ABE Taisei	MF	20	

Distribution in the Final Third



Match Summary - Key Statistics



Possession

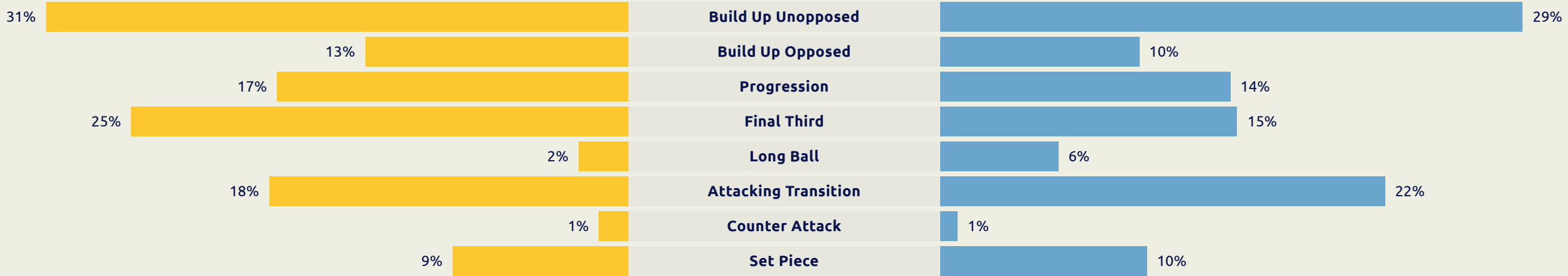


Senegal	Category	Japan
Total		Total
0	Goals	1
11 (4)	Attempts at Goal (On Target)	7 (3)
492 (404)	Total Passes (Complete)	408 (317)
82 %	Pass Completion %	78 %
94	Completed Line Breaks	74
15	Defensive Line Breaks	5
87	Receptions in the Final Third	56
21	Crosses	11
26	Ball Progressions	15
199 (40)	Defensive Pressures Applied (Direct Pressures)	293 (65)
64	Forced Turnovers	68
78	Second Balls	70
110.5 km	Total Distance Covered	114.6 km
15.1 km	High Speed (Zone 4) Distance Covered	14.3 km

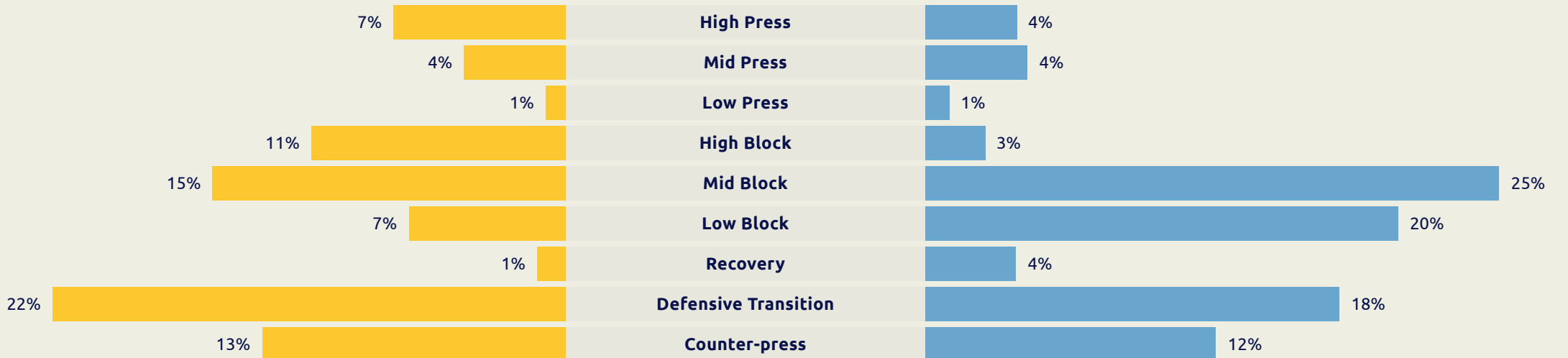


Phases of Play

IN POSSESSION



OUT OF POSSESSION

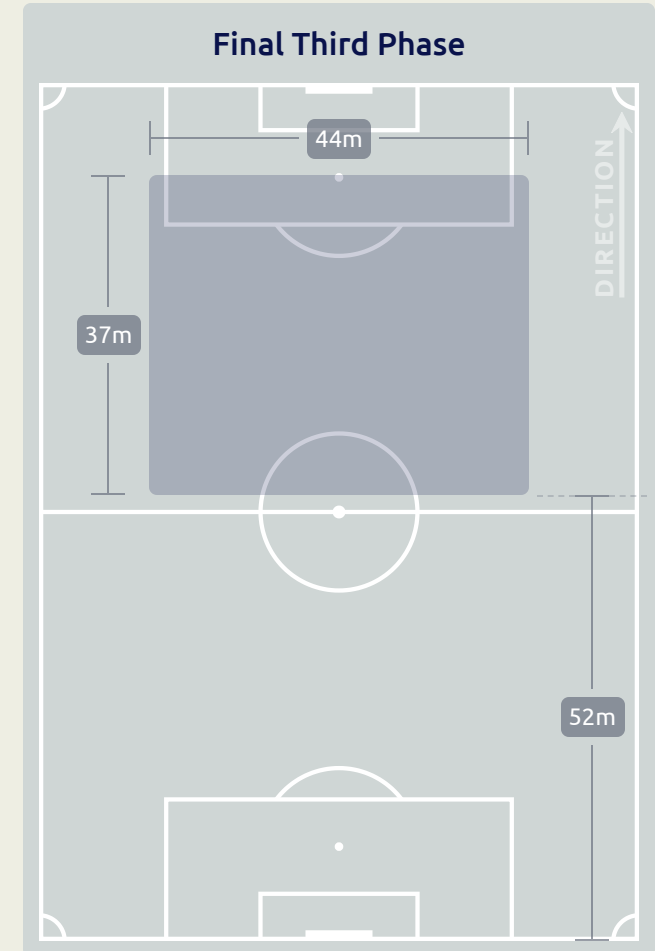
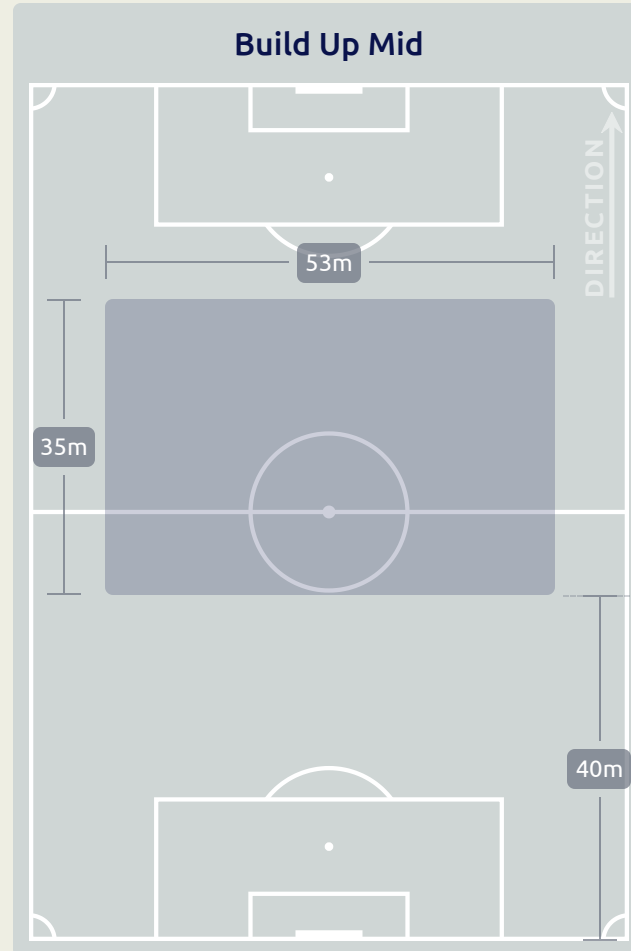
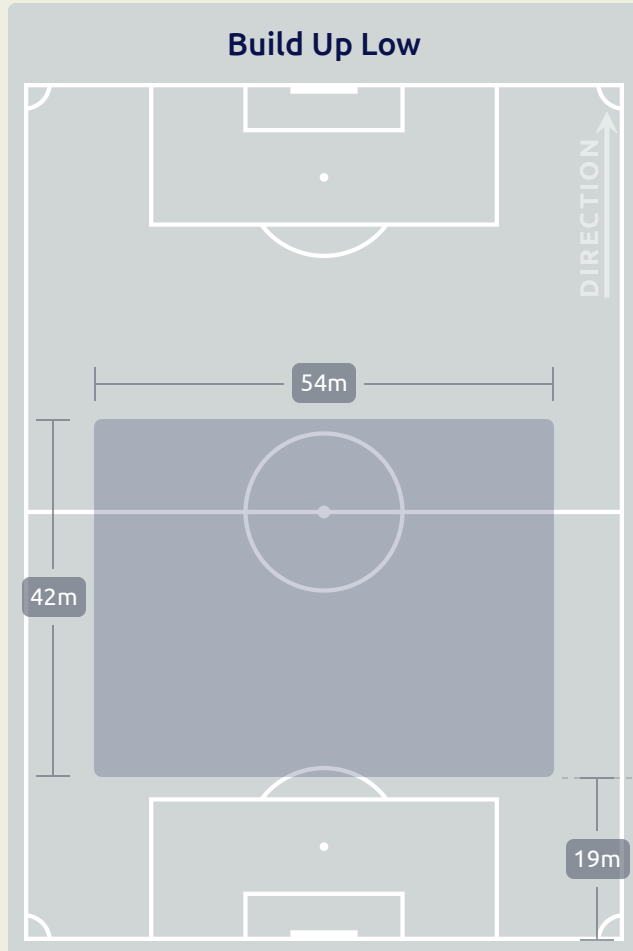


IN POSSESSION



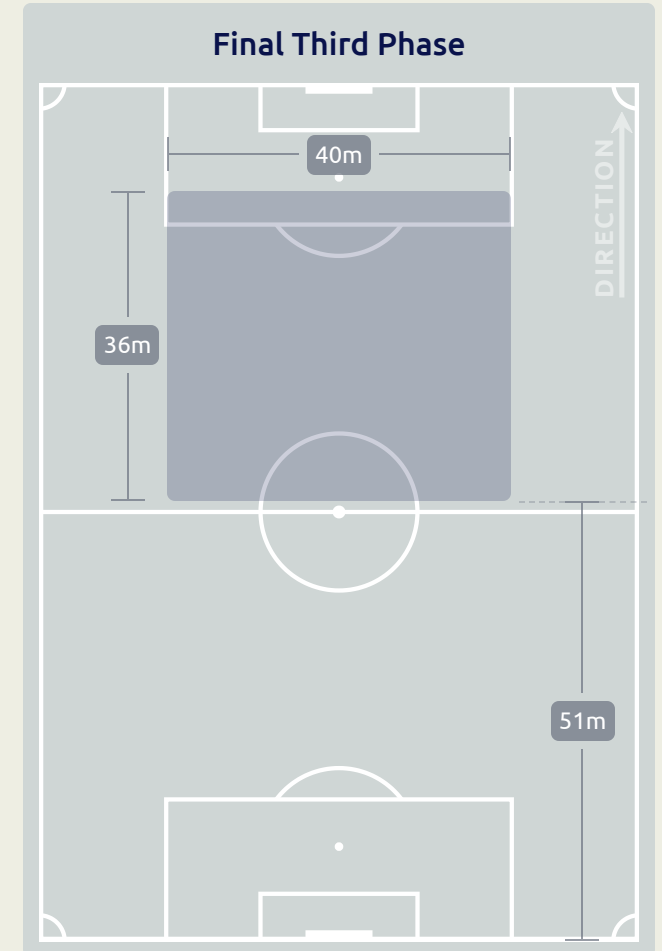
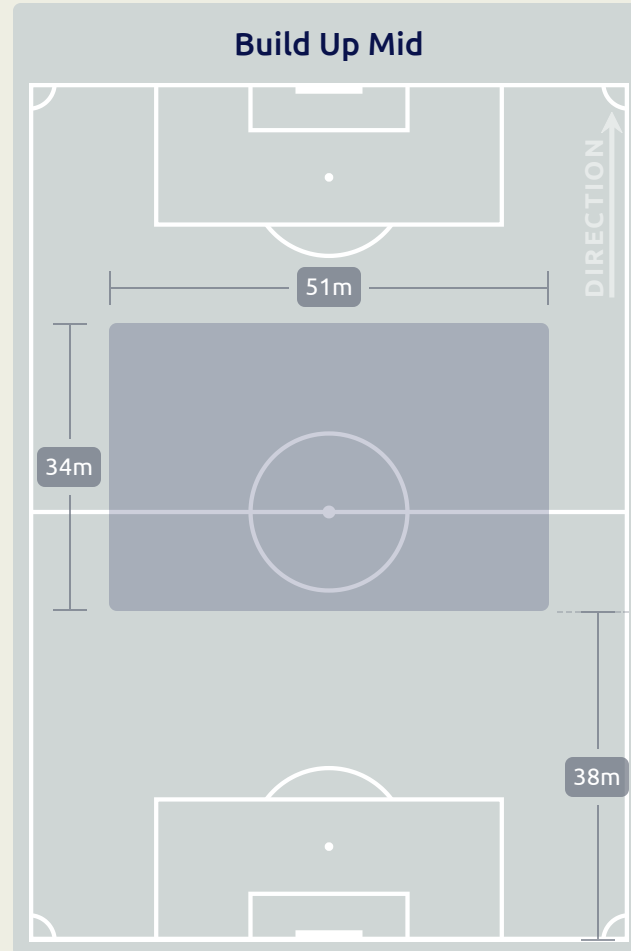
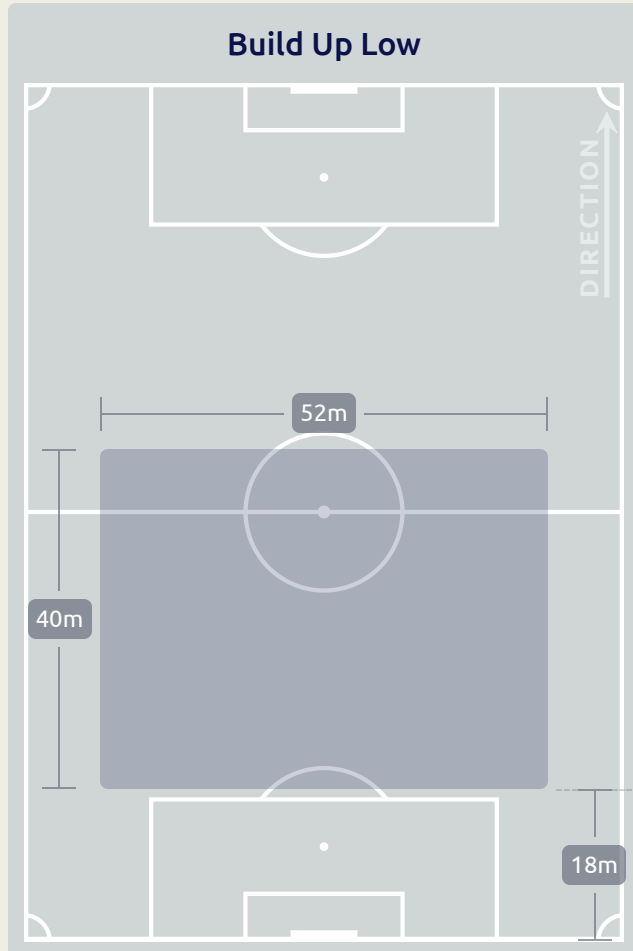
Senegal v Japan

In Possession Line Height & Team Length





In Possession Line Height & Team Length



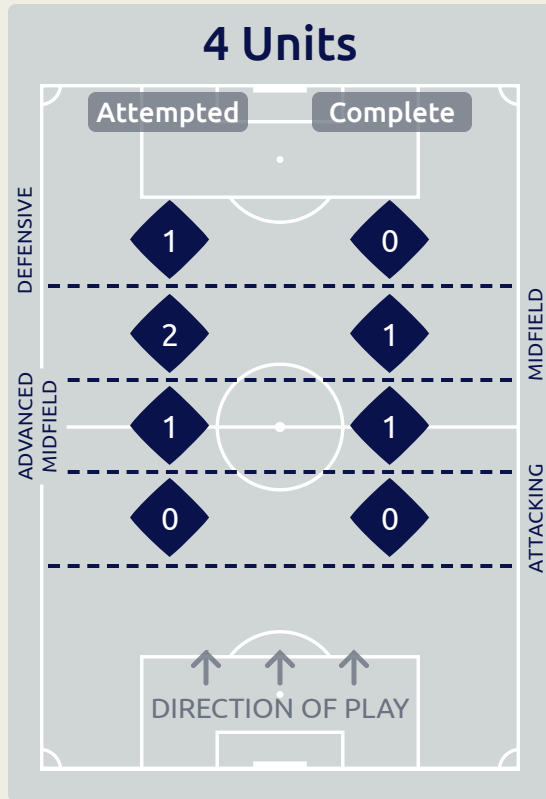
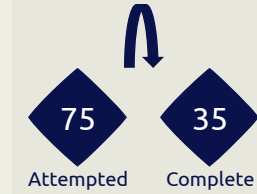
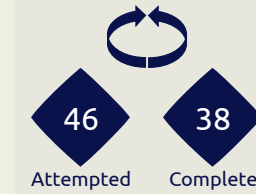
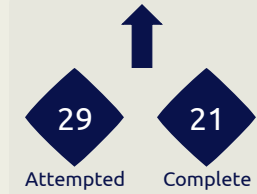
Line Breaks



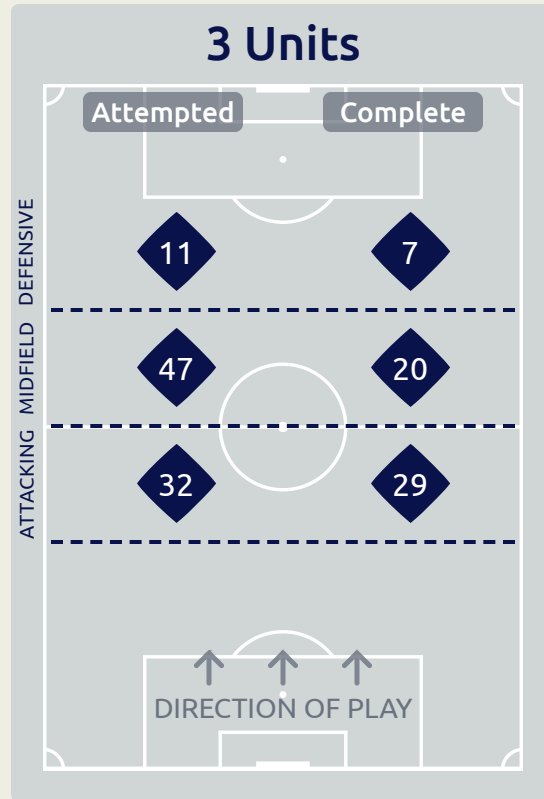
Senegal

Attempted Line Breaks

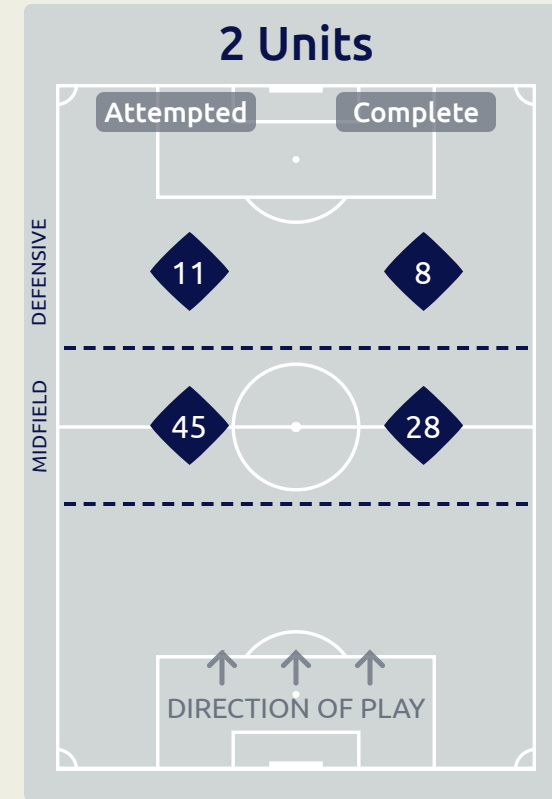
150



Attempted Line Breaks	4
Inside Shape	3
Outside Shape	1



Attempted Line Breaks	90
Inside Shape	58
Outside Shape	32



Attempted Line Breaks	56
Inside Shape	41
Outside Shape	15

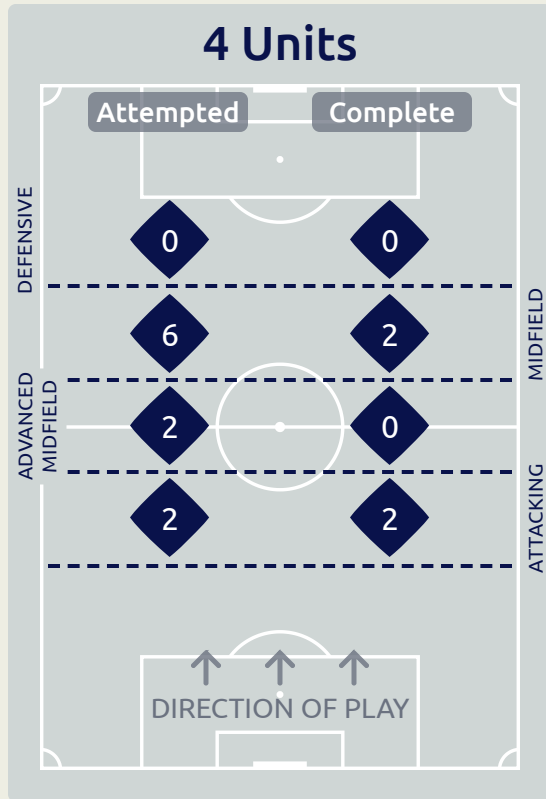
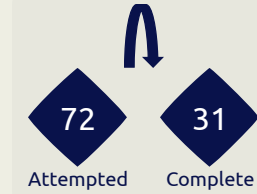
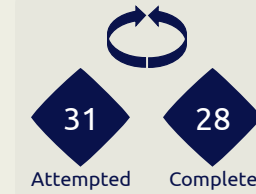
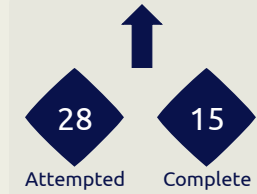
Line Breaks



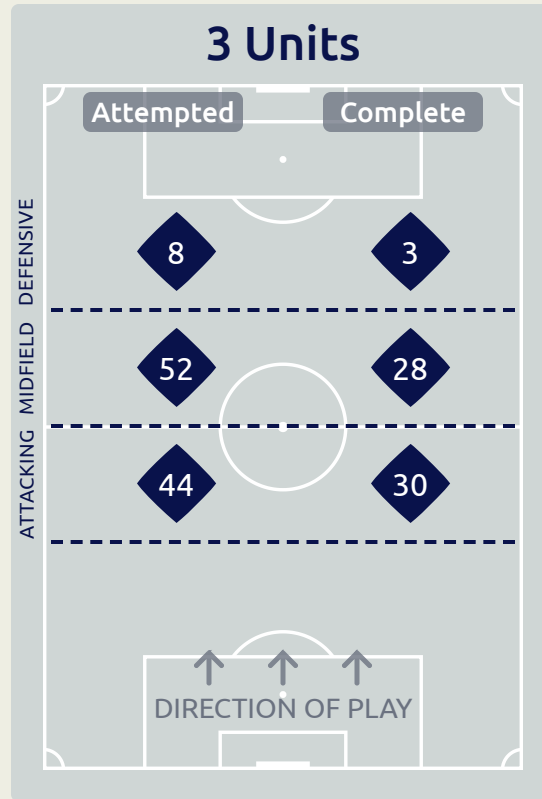
Japan

Attempted Line Breaks

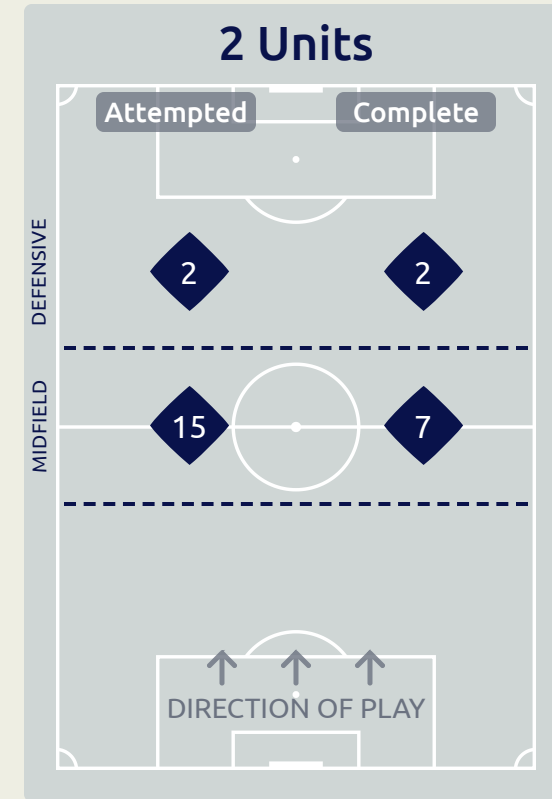
131



Attempted Line Breaks	10
Inside Shape	7
Outside Shape	3



Attempted Line Breaks	104
Inside Shape	73
Outside Shape	31



Attempted Line Breaks	17
Inside Shape	14
Outside Shape	3

Line Breaks



					4 Units				3 Units			2 Units		Direction			Distribution Type		
#	Player	Line Breaks Attempted	Line Breaks Completed	Line Break Completion %	Attacking Line	Attacking Midfield Line	Midfield Line	Defensive Line	Attacking Line	Midfield Line	Defensive Line	Midfield Line	Defensive Line	Through	Around	Over	Pass	Cross	Ball Progression
16	NDIAYE Mamour	3	1	33%	0	0	1	0	0	1	0	1	0	0	0	3	3	0	0
3	DIARRA Djibril	5	5	100%	0	0	0	0	2	3	0	0	0	1	2	2	5	0	0
4	CAMARA Mamadou	14	9	64%	0	1	0	0	3	5	0	5	0	7	2	5	14	0	0
6	BASSE Souleymane	34	24	70%	0	0	0	0	9	8	2	13	2	5	13	16	33	1	0
8	DIOP Amidou	20	16	80%	0	0	0	0	6	9	1	4	0	2	11	7	18	2	0
9	FAYE Souleymane	5	3	60%	0	0	0	0	0	2	1	2	0	1	4	0	4	0	1
10	DIALLO Samba	3	1	33%	0	0	0	0	0	2	0	1	0	2	1	0	3	0	0
12	NDIAYE Babacar	16	7	43%	0	0	0	0	4	3	1	7	1	1	1	14	16	0	0
13	SANO Seydou	24	15	62%	0	0	1	0	8	7	1	4	3	4	5	15	22	1	1
17	FAYE Mame Mor	5	1	20%	0	0	0	0	0	4	1	0	0	1	2	2	3	1	1
20	DIOP Pape Demba	17	9	52%	0	0	0	0	0	3	3	7	4	3	4	10	14	3	0
5	SECK Ibrahima	2	2	100%	0	0	0	0	0	0	0	1	1	2	0	0	1	0	1
14	NGOM Libasse	2	1	50%	0	0	0	1	0	0	1	0	0	0	1	1	2	0	0

Passing Networks



#	Passes From ↓ to →	NDIAYE Mamour	DIARRA Djibril	CAMARA Mamadou	BASSE Souleymane	DIOP Amidou	FAYE Souleymane	DIALLO Samba	NDIAYE Babacar	SANO Seydou	FAYE Mame Mor	DIOP Pape Demba	SECK Ibrahima	NGOM Libasse
16	NDIAYE Mamour		0	0	2	1	1	0	10	6	0	0	0	1
3	DIARRA Djibril	0		5	4	4	3	0	4	5	0	5	0	0
4	CAMARA Mamadou	0	4		10	3	4	3	6	4	0	6	0	1
6	BASSE Souleymane	3	0	4		1	3	5	7	11	2	12	2	1
8	DIOP Amidou	1	3	5	0		4	0	16	2	4	2	0	1
9	FAYE Souleymane	0	0	6	0	3		0	0	1	2	5	0	1
10	DIALLO Samba	0	1	0	2	0	1		0	1	0	2	0	0
12	NDIAYE Babacar	4	3	5	2	8	2	0		20	1	3	1	0
13	SANO Seydou	2	1	8	17	7	1	1	10		2	1	0	0
17	FAYE Mame Mor	0	3	0	0	3	1	0	0	0		0	0	0
20	DIOP Pape Demba	1	1	10	6	0	2	2	4	2	3		0	1
5	SECK Ibrahima	0	0	1	6	0	0	0	0	0	0	1		0
14	NGOM Libasse	0	0	1	0	0	1	0	0	0	0	0	2	

Top 5 Player to Player Passers		
Player	Passed To	% of Total Team Passes
NDIAYE Babacar	SANO Seydou	5.5%
SANO Seydou	BASSE Souleymane	4.7%
DIOP Amidou	NDIAYE Babacar	4.4%
BASSE Souleymane	DIOP Pape Demba	3.3%
BASSE Souleymane	SANO Seydou	3%

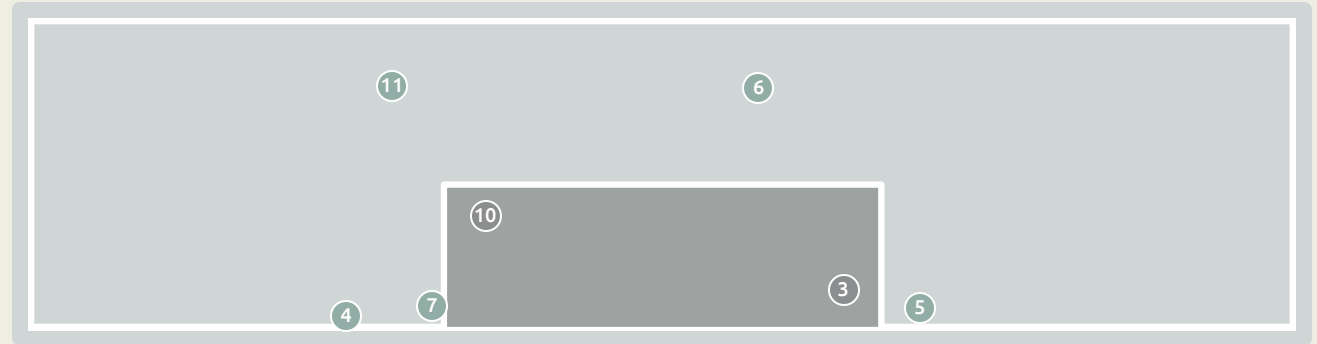
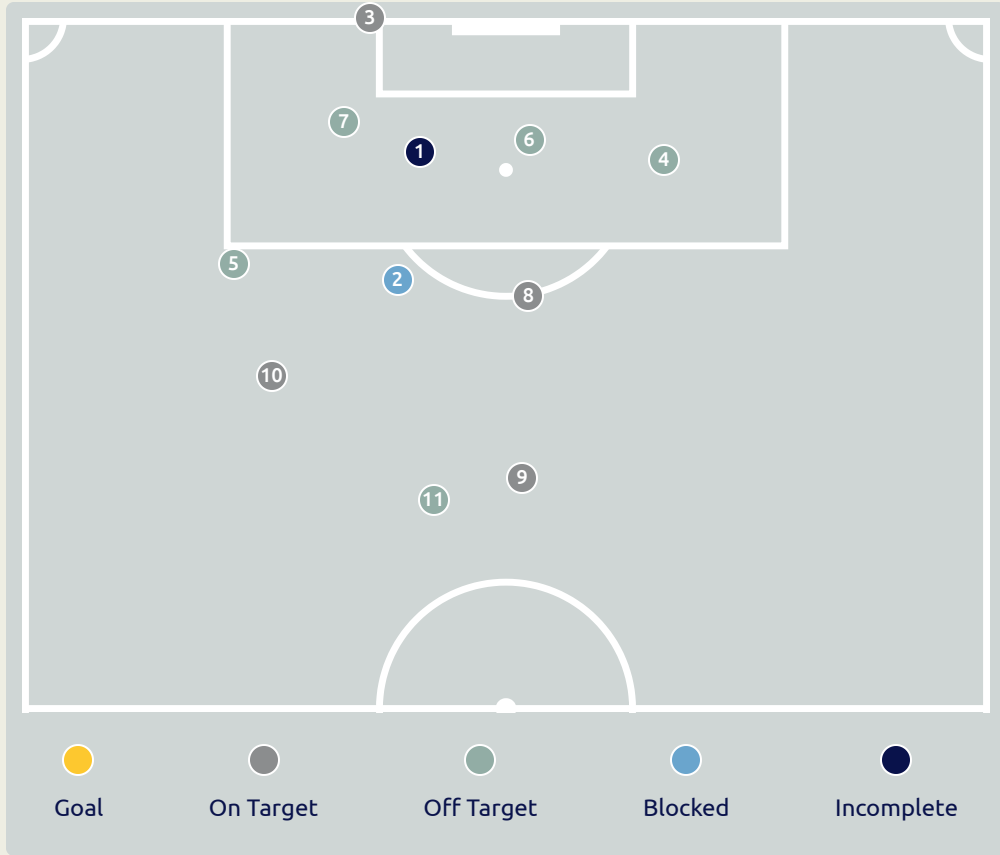


Passing Networks

#	Passes From ↓ to →	KIMURA Ryoya	TANAKA Hayato	FUKUI Taichi	MATSUKI Kuryu	SANO Kodai	KITANO Sota	CHASE Anrie	EINAGA Takatora	TAKAHASHI Niko	KUMATA Naoki	TAKAI Kota	MATSUDA Hayate	YAMANE Riku	FUKUDA Shio	YASHIKI Yusei	ABE Taisei
1	KIMURA Ryoya		10	1	0	0	0	13	0	1	1	3	0	0	0	1	0
3	TANAKA Hayato	2		6	3	10	4	15	0	8	0	5	0	2	0	0	0
6	FUKUI Taichi	1	3		4	5	3	5	0	2	3	3	0	0	0	0	0
7	MATSUKI Kuryu	1	2	3		1	0	4	2	2	2	0	0	0	0	0	0
8	SANO Kodai	1	5	1	3		3	3	1	2	1	2	0	0	0	0	0
10	KITANO Sota	0	1	2	1	4		1	0	4	2	0	0	0	0	0	0
13	CHASE Anrie	10	16	4	2	5	1		1	1	1	6	0	2	0	0	0
14	EINAGA Takatora	0	0	2	1	2	0	0		0	0	1	0	0	0	0	0
16	TAKAHASHI Niko	0	15	1	3	2	3	1	0		0	0	0	0	0	0	0
18	KUMATA Naoki	0	0	1	2	0	2	0	0	1		1	0	1	0	0	0
19	TAKAI Kota	3	1	5	1	4	0	11	3	1	0		0	0	0	0	0
2	MATSUDA Hayate	0	0	0	0	0	0	0	0	0	0	0		0	0	0	0
5	YAMANE Riku	1	2	1	0	0	0	1	0	0	0	1	0		0	0	0
9	FUKUDA Shio	0	0	0	0	0	0	0	0	0	0	0	0	0		1	0
15	YASHIKI Yusei	0	0	0	0	0	0	0	0	0	0	0	0	0	0		0
20	ABE Taisei	0	0	0	0	0	0	0	0	0	0	0	0	0	0	0	

Top 5 Player to Player Passers		
Player	Passed To	% of Total Team Passes
CHASE Anrie	TANAKA Hayato	5.4%
TANAKA Hayato	CHASE Anrie	5%
TAKAHASHI Niko	TANAKA Hayato	5%
KIMURA Ryoya	CHASE Anrie	4.4%
TAKAI Kota	CHASE Anrie	3.7%

Attempts at Goal



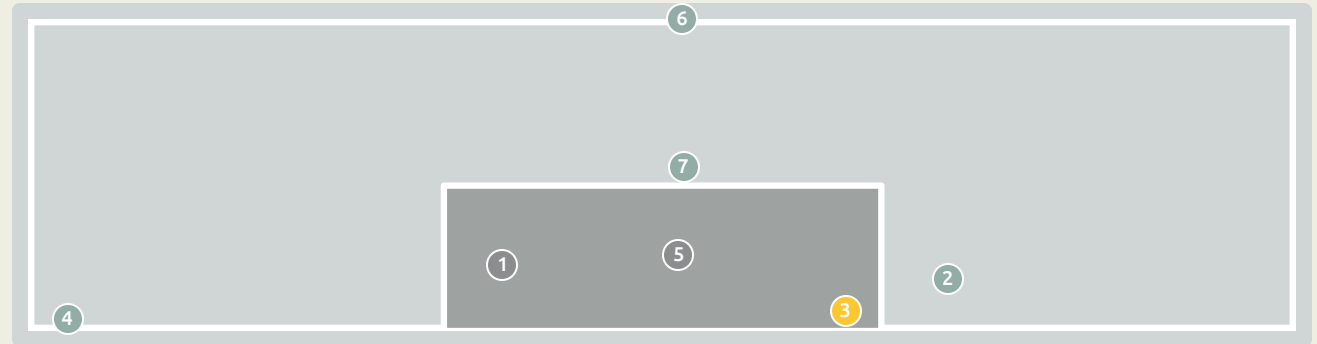
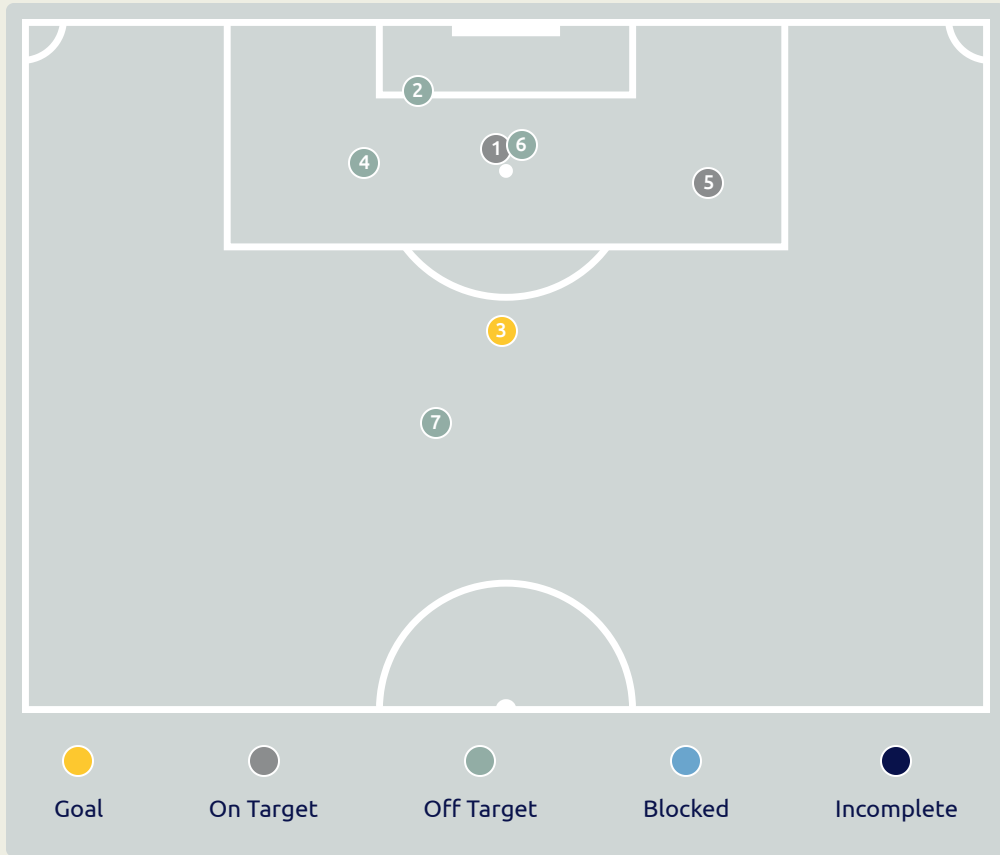
Key	Outcome	Shots
●	Goals	0
●	On Target	4
●	Off Target	5
●	Blocked	1
●	Incomplete	1






Attempts at Goal



Time	Player	Outcome	Body Part	Delivery Type
20	10 DIALLO Samba	Incomplete - Referee Event	Left Foot	Pass
24	9 FAYE Souleymane	Incomplete - Blocked	Left Foot	Loose Ball
56	17 FAYE Mame Mor	On Target - Saved	Left Foot	Pass
59	17 FAYE Mame Mor	Off Target	Right Foot	Pass
66	10 DIALLO Samba	Off Target	Right Foot	Pass
71	17 FAYE Mame Mor	Off Target	Left Foot	Pass
76	5 SECK Ibrahima	Off Target	Right Foot	Ball Progression
83	4 CAMARA Mamadou	On Target - Saved	Right Foot	Pass
90	4 CAMARA Mamadou	On Target - Saved	Right Foot	Pass
91	13 SANO Seydou	On Target - Saved	Left Foot	Pass
92	13 SANO Seydou	Off Target	Left Foot	Pass

Attempts at Goal



Key	Outcome	Shots
	Goals	1
	On Target	2
	Off Target	4
	Blocked	0
	Incomplete	0

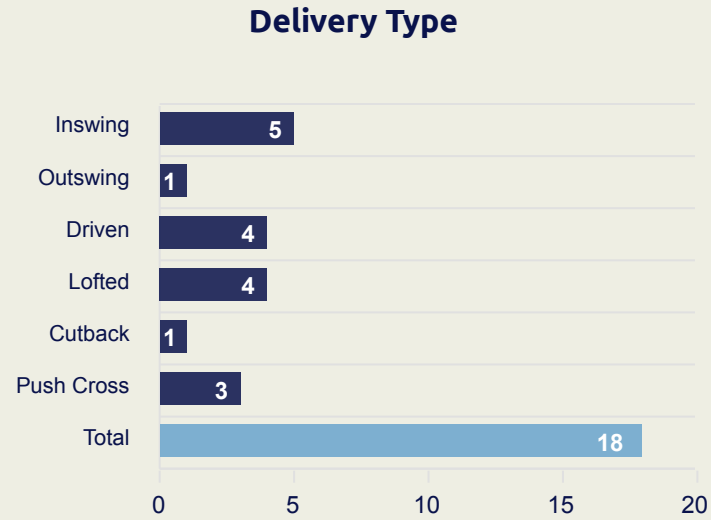
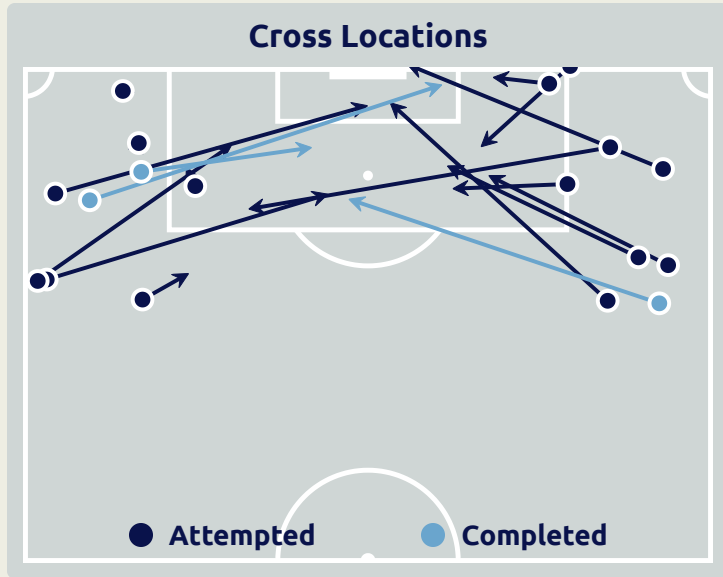
Attempts at Goal

Japan

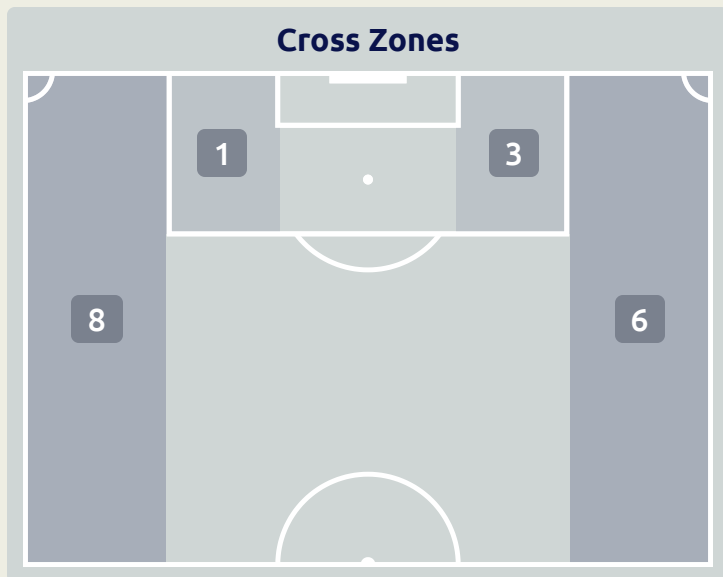


Time	Player	Outcome	Body Part	Delivery Type
8	19 TAKAI Kota	On Target - Saved	Head	Cross
9	7 MATSUKI Kuryu	Off Target	Head	Cross
14	7 MATSUKI Kuryu	On Target - Goal	Left Foot	Pass
29	8 SANO Kodai	Off Target	Right Foot	Pass
49	8 SANO Kodai	On Target - Saved	Right Foot	Pass
63	18 KUMATA Naoki	Off Target	Left Foot	Cross
87	7 MATSUKI Kuryu	Off Target	Left Foot	Freekick

Crosses (Open Play)



#	Player	Inswing	Outswing	Driven	Lofted	Cutback	Push Cross	Total Attempted
16	NDIAYE Mamour	0	0	0	0	0	0	0
3	DIARRA Djibril	0	0	0	0	0	0	0
4	CAMARA Mamadou	0	0	0	0	0	0	0
6	BASSE Souleymane	0	0	1	2	0	0	3
8	DIOP Amidou	1	0	1	1	0	1	4
9	FAYE Souleymane	0	0	2	0	1	0	3
10	DIALLO Samba	0	0	0	0	0	0	0
12	NDIAYE Babacar	0	0	0	0	0	0	0
13	SANO Seydou	0	0	0	1	0	0	1
17	FAYE Mame Mor	0	0	0	0	0	2	2
20	DIOP Pape Demba	3	0	0	0	0	0	3
5	SECK Ibrahima	1	0	0	0	0	0	1
14	NGOM Libasse	0	1	0	0	0	0	1



Attempted

18

Completed

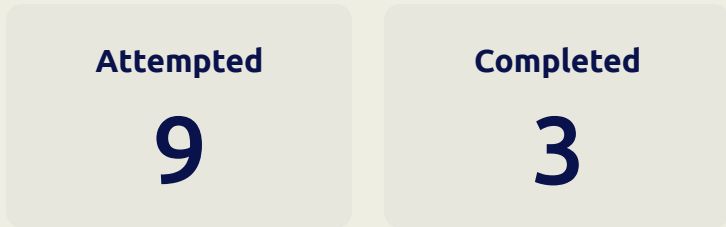
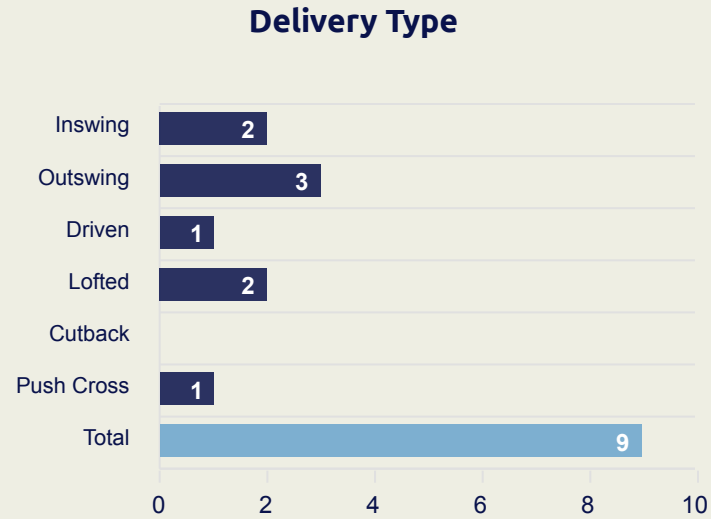
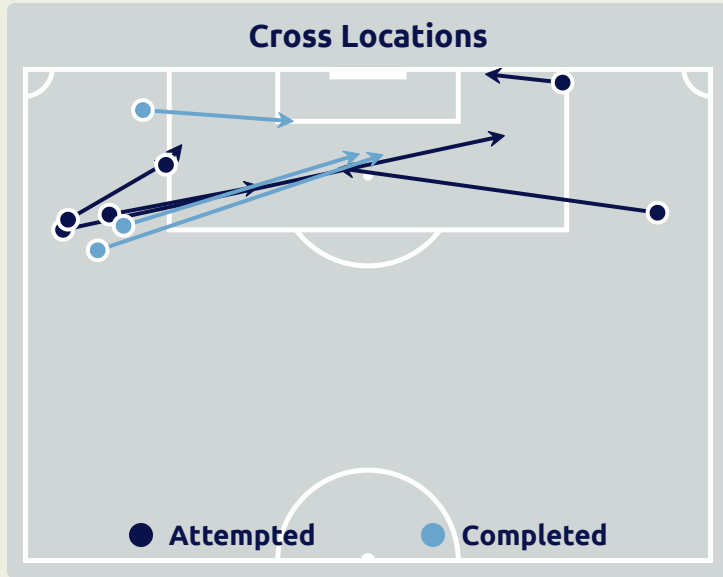
3

Most Crosses Attempted

4

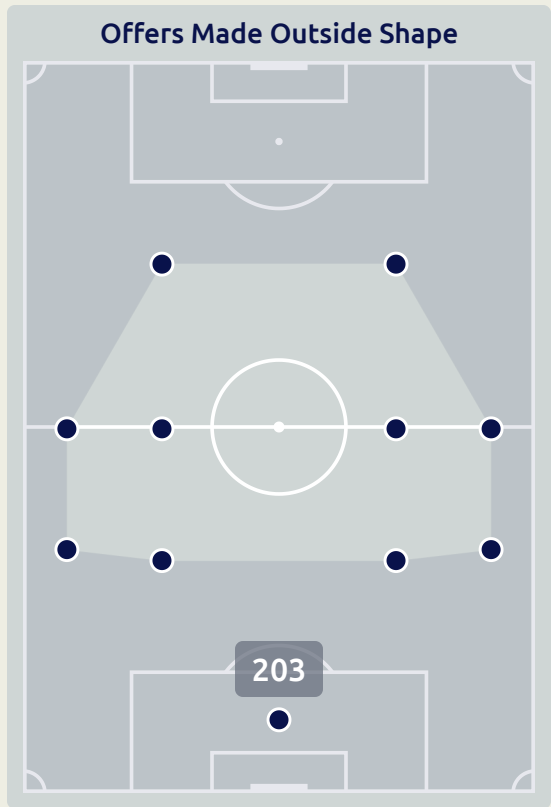
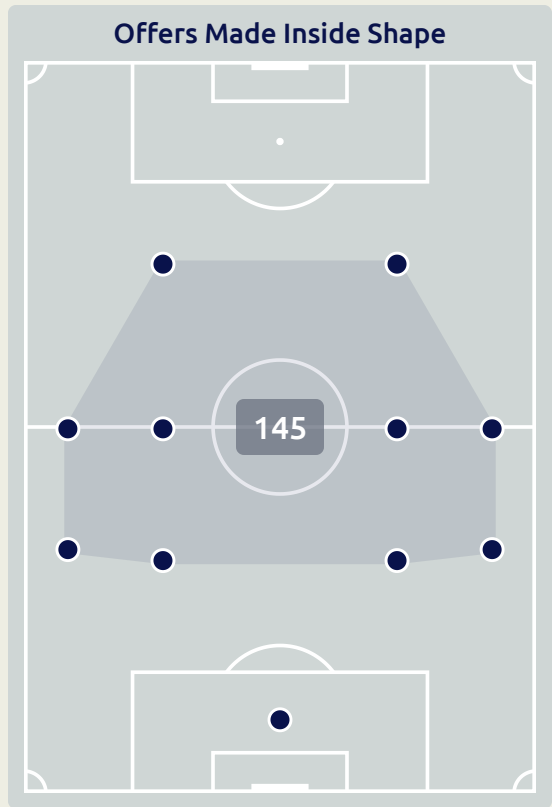
DIOP Amidou
RIGHT BACK

Crosses (Open Play)



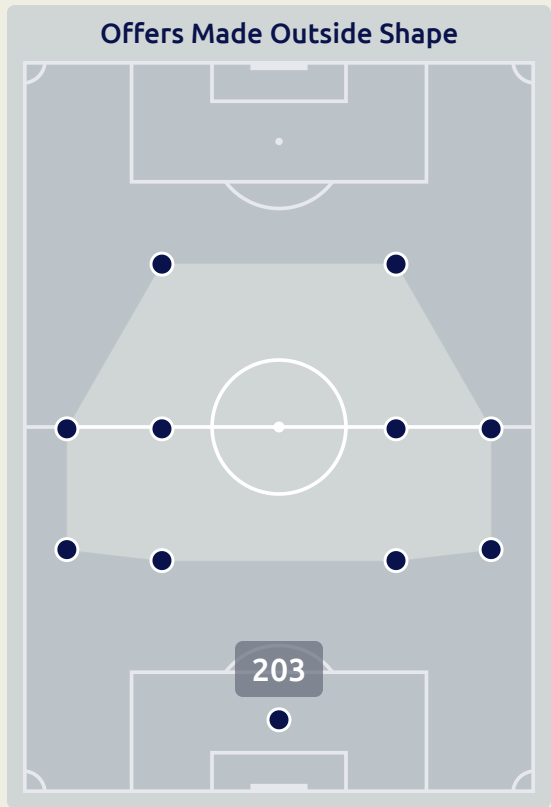
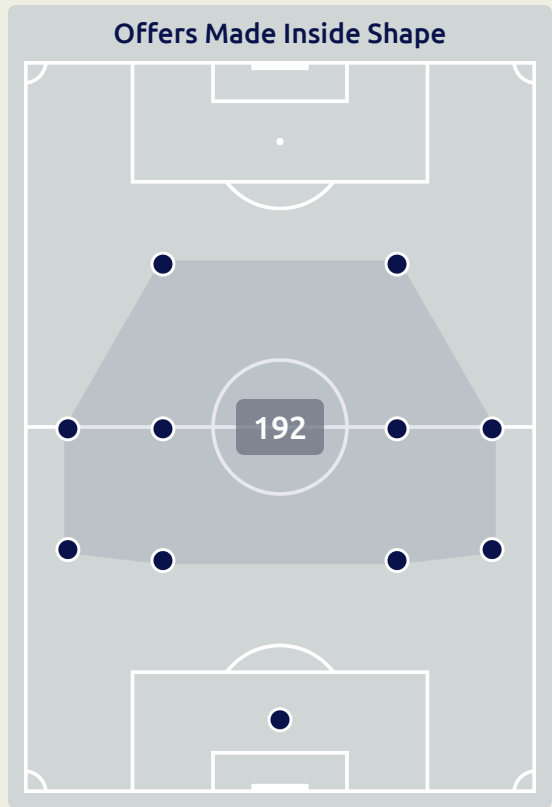
#	Player	Inswing	Outswing	Driven	Lofted	Cutback	Push Cross	Total Attempted
1	KIMURA Ryoya	0	0	0	0	0	0	0
3	TANAKA Hayato	0	0	0	0	0	0	0
6	FUKUI Taichi	1	0	0	0	0	0	1
7	MATSUKI Kuryu	0	0	1	0	0	0	1
8	SANO Kodai	1	2	0	0	0	1	4
10	KITANO Sota	0	0	0	0	0	0	0
13	CHASE Anrie	0	0	0	0	0	0	0
14	EINAGA Takatora	0	0	0	0	0	0	0
16	TAKAHASHI Niko	0	1	0	2	0	0	3
18	KUMATA Naoki	0	0	0	0	0	0	0
19	TAKAI Kota	0	0	0	0	0	0	0
2	MATSUDA Hayate	0	0	0	0	0	0	0
5	YAMANE Riku	0	0	0	0	0	0	0
9	FUKUDA Shio	0	0	0	0	0	0	0
15	YASHIKI Yusei	0	0	0	0	0	0	0
20	ABE Taisei	0	0	0	0	0	0	0

Offering to Receive



#	Player	Offers Made	Offers Received	% Made & Received
16	NDIAYE Mamour	2	0	0%
3	DIARRA Djibril	39	14	35.9%
4	CAMARA Mamadou	22	7	31.8%
6	BASSE Souleymane	25	8	32%
8	DIOP Amidou	46	23	50%
9	FAYE Souleymane	43	14	32.6%
10	DIALLO Samba	37	17	45.9%
12	NDIAYE Babacar	15	12	80%
13	SANO Seydou	17	10	58.8%
17	FAYE Mame Mor	44	8	18.2%
20	DIOP Pape Demba	26	7	26.9%
5	SECK Ibrahima	22	8	36.4%
14	NGOM Libasse	10	2	20%

Offering to Receive

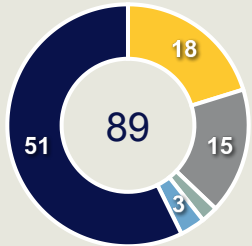


#	Player	Offers Made	Offers Received	% Made & Received
1	KIMURA Ryoya	12	5	41.7%
3	TANAKA Hayato	15	11	73.3%
6	FUKUI Taichi	31	11	35.5%
7	MATSUKI Kuryu	53	11	20.8%
8	SANO Kodai	38	11	28.9%
10	KITANO Sota	68	11	16.2%
13	CHASE Anrie	18	6	33.3%
14	EINAGA Takatora	24	5	20.8%
16	TAKAHASHI Niko	39	11	28.2%
18	KUMATA Naoki	50	11	22%
19	TAKAI Kota	17	11	64.7%
2	MATSUDA Hayate	0	0	0%
5	YAMANE Riku	23	2	8.7%
9	FUKUDA Shio	3	1	33.3%
15	YASHIKI Yusei	3	0	0%
20	ABE Taisei	1	1	100%

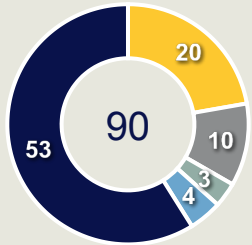
Movement to Receive

Movement Types by Phase

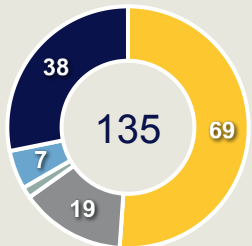
Final Third Phase



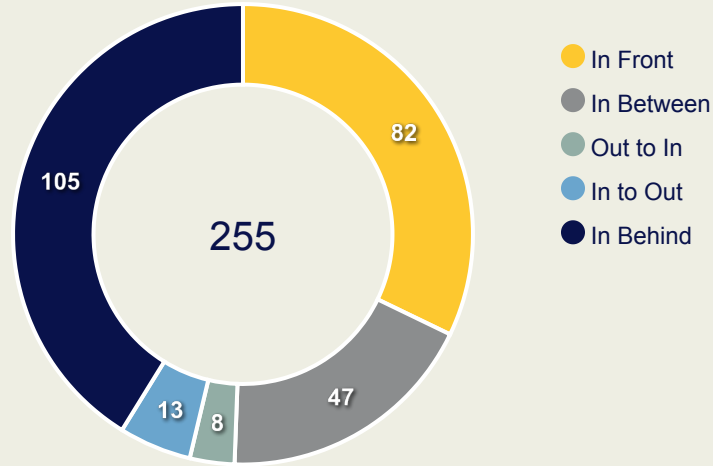
Progression Phase



Build Up Phase



All Movement Types

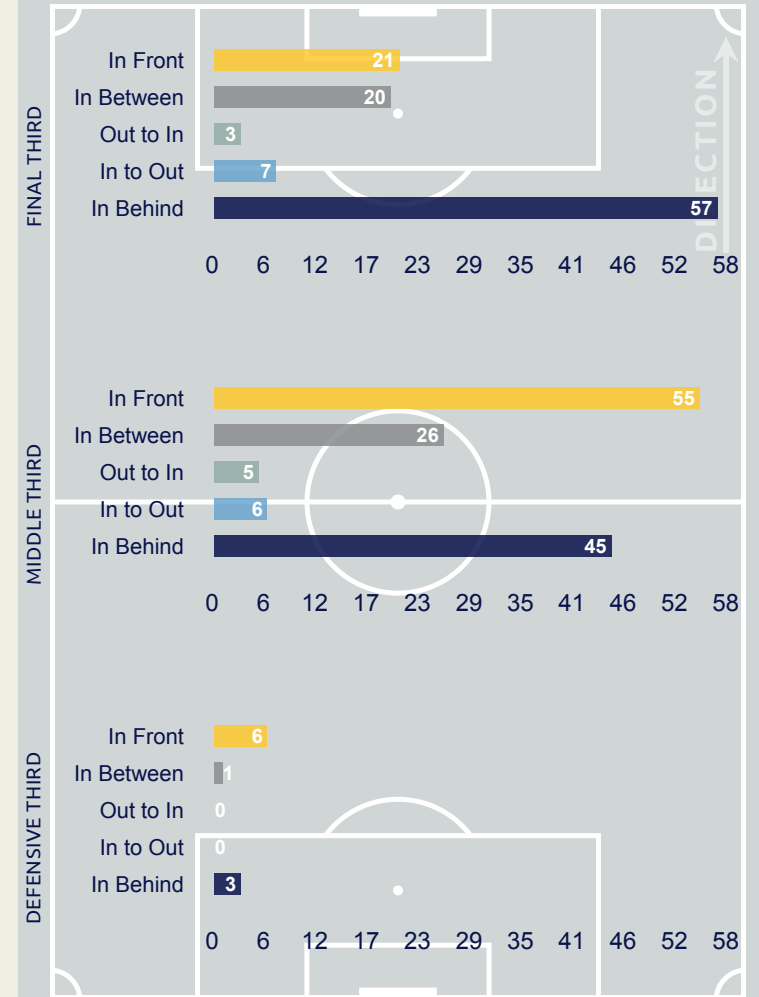


- In Front
- In Between
- Out to In
- In to Out
- In Behind

Top Ranked Players

Type	Player	Movements
In Front	3 DIARRA Djibril	24
In Between	17 FAYE Mame Mor	10
Out to In	9 FAYE Souleymane	2
In to Out	17 FAYE Mame Mor	3
In Behind	17 FAYE Mame Mor	25

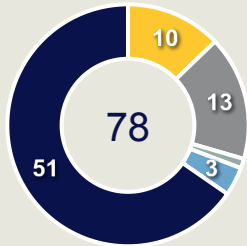
Movement Types Pitch Third



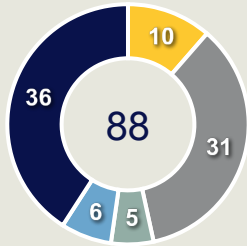
Movement to Receive

Movement Types by Phase

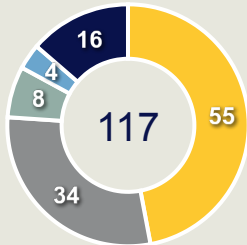
Final Third Phase



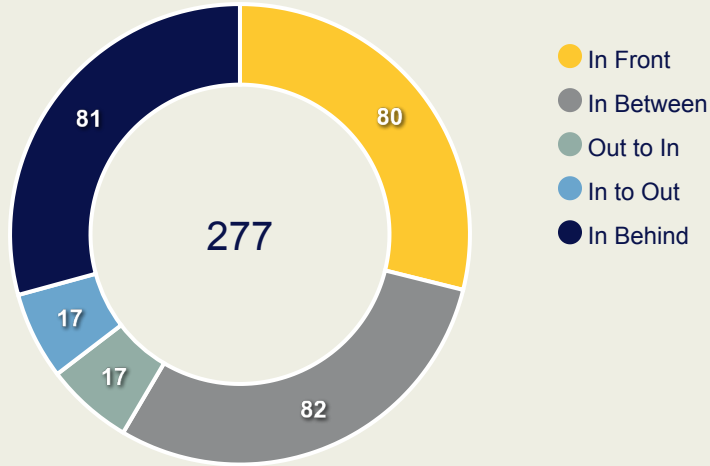
Progression Phase



Build Up Phase



All Movement Types

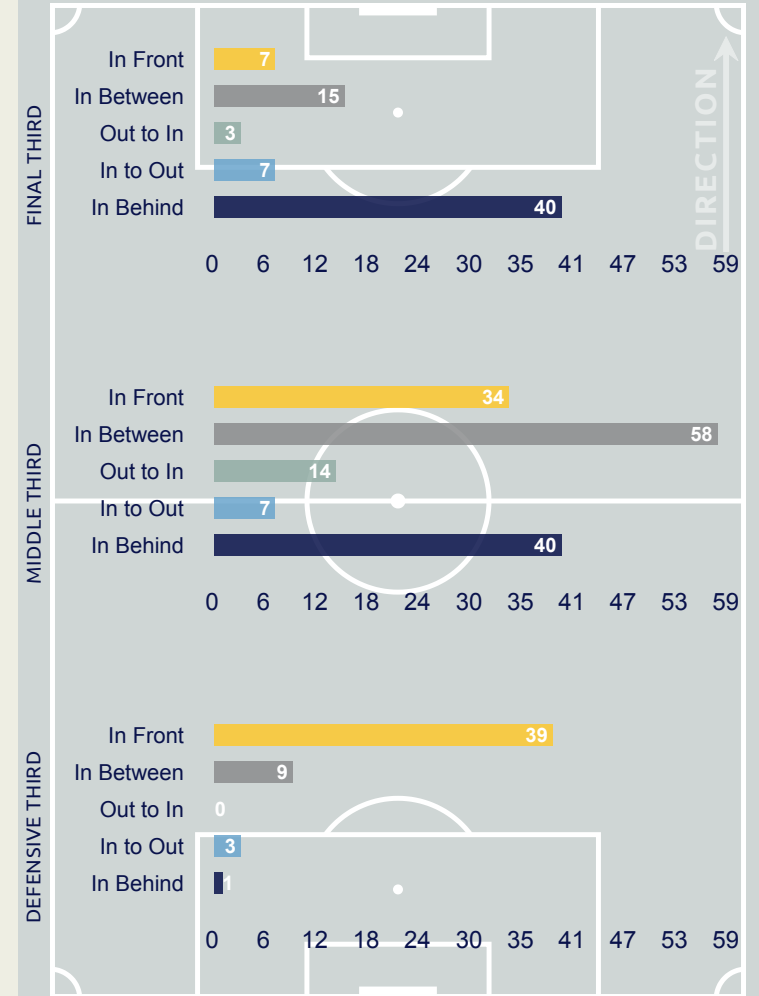


- In Front
- In Between
- Out to In
- In to Out
- In Behind

Top Ranked Players

Type	Player	Movements
In Front	6 FUKUI Taichi	13
In Between	18 KUMATA Naoki	24
Out to In	10 KITANO Sota	8
In to Out	10 KITANO Sota	7
In Behind	18 KUMATA Naoki	19

Movement Types Pitch Third

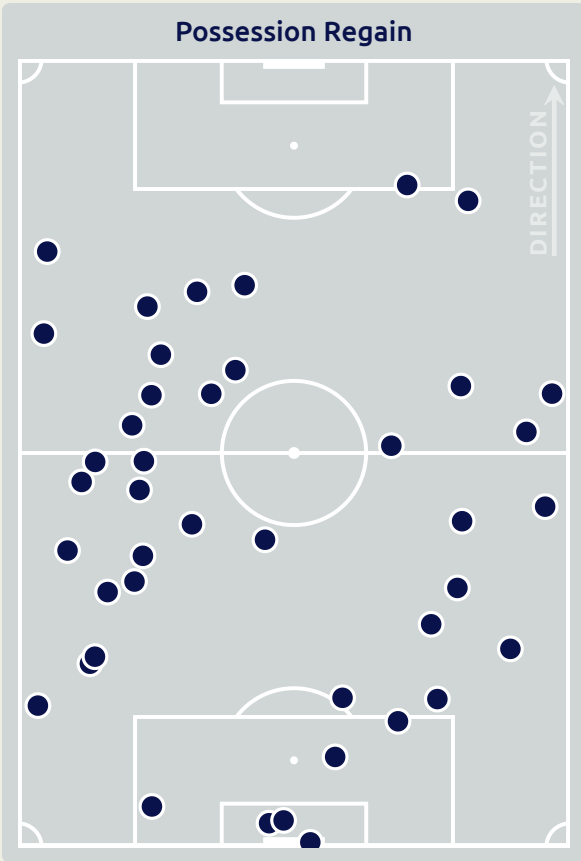
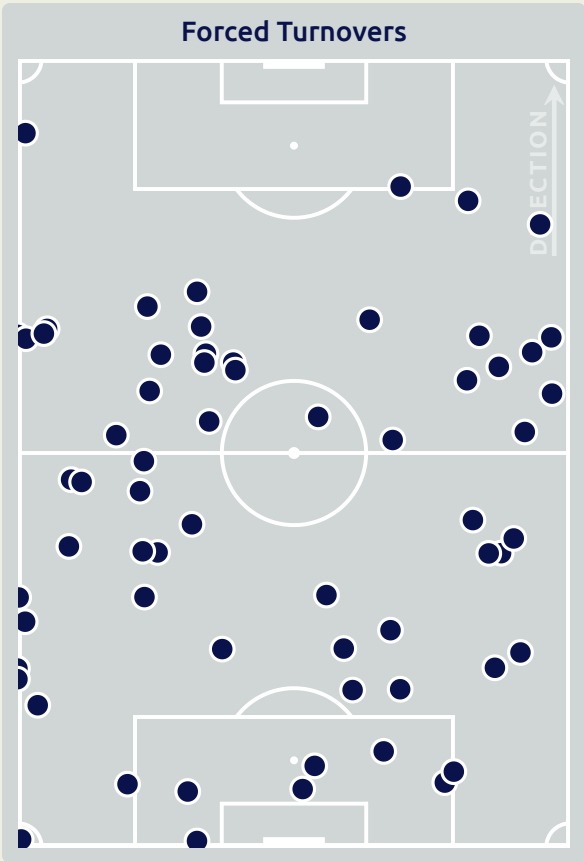


OUT OF POSSESSION



Senegal v Japan

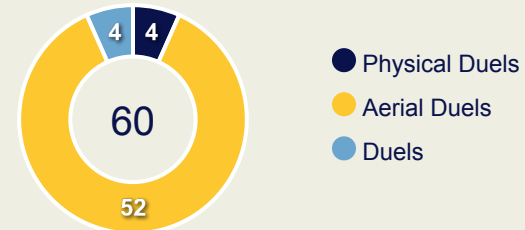
Defensive Actions



Blocks



Possession Contests



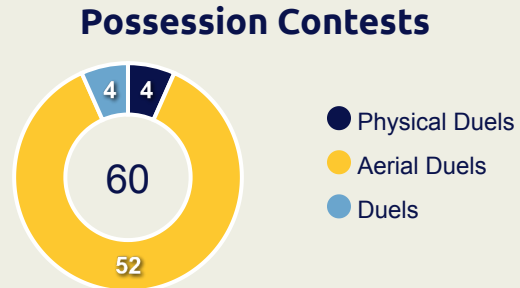
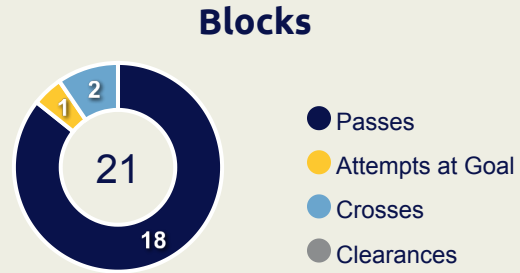
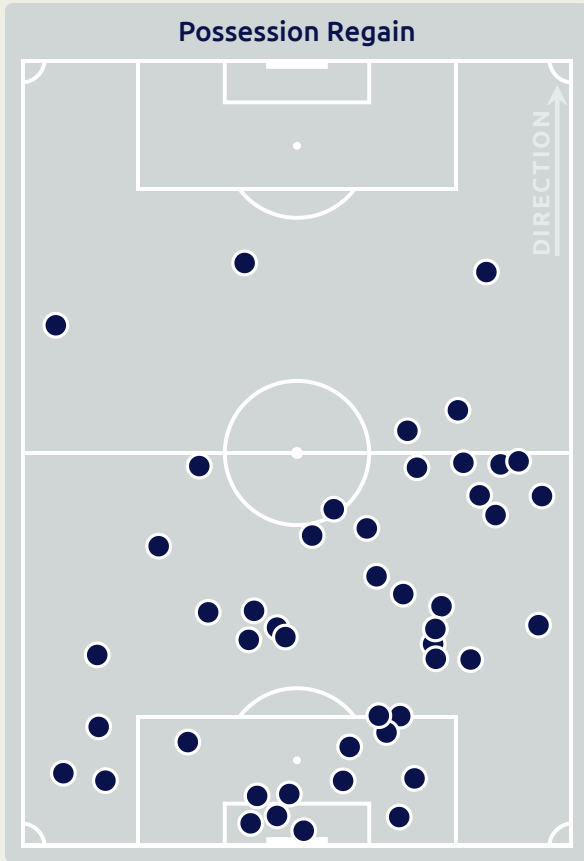
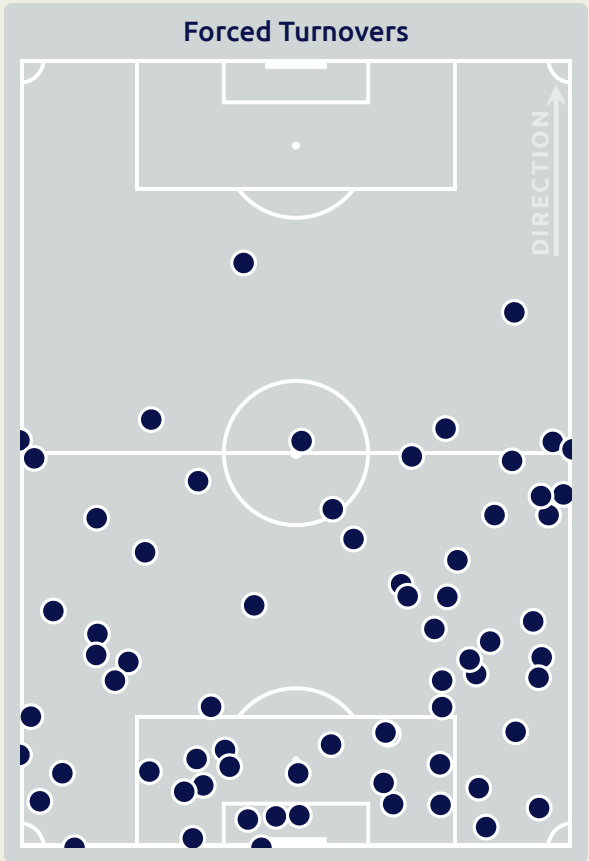
Most Possession Regains



#	Player	Total Possession Regains
16	NDIAYE Mamour	5
3	DIARRA Djibril	2
4	CAMARA Mamadou	6
6	BASSE Souleymane	7
8	DIOP Amidou	3
9	FAYE Souleymane	2
10	DIALLO Samba	2
12	NDIAYE Babacar	6
13	SANO Seydou	8
17	FAYE Mame Mor	2
20	DIOP Pape Demba	2
5	SECK Ibrahima	0
14	NGOM Libasse	0

Defensive Actions

68 Forced Turnovers	53 Possession Regained	11 Interceptions	31 Tackles	3.11 Possession Actions / Defensive Action
-------------------------------	----------------------------------	----------------------------	----------------------	---



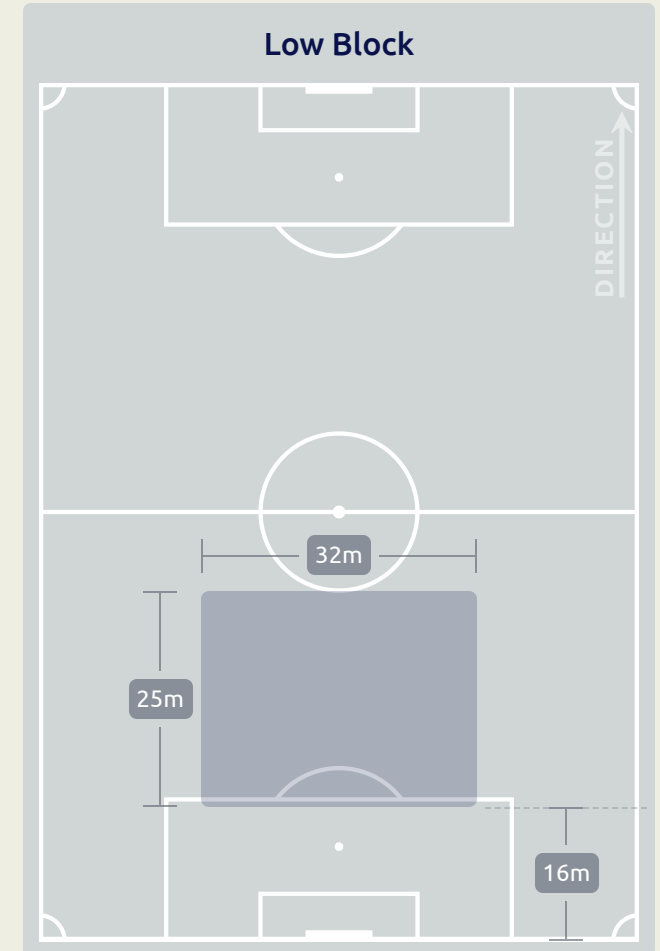
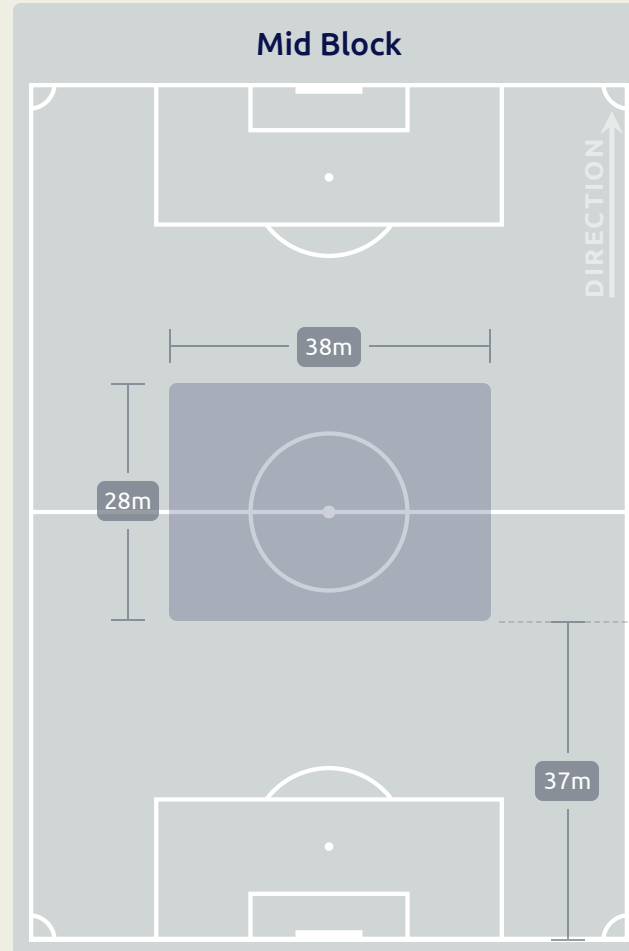
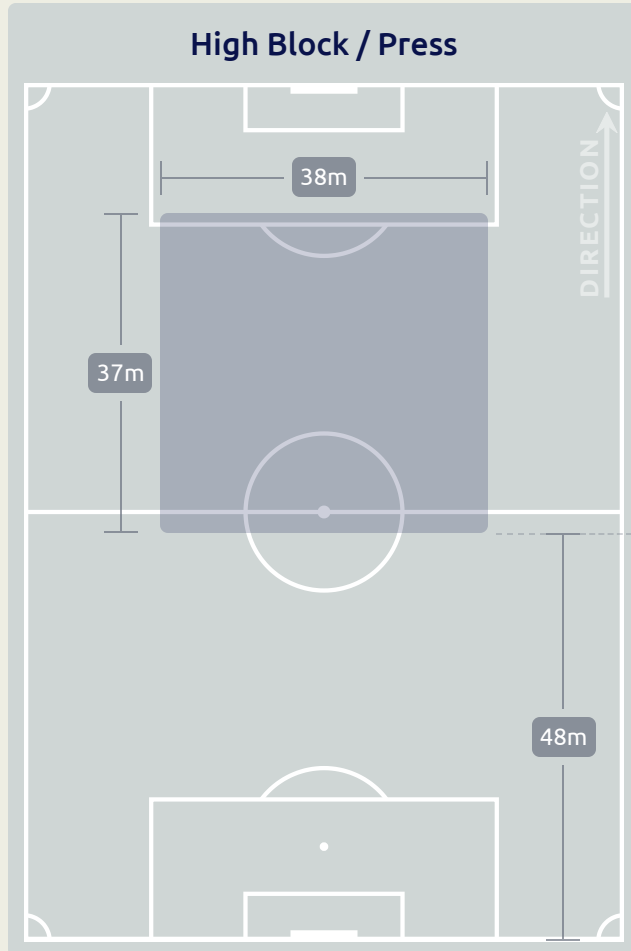
Most Possession Regains

10

TAKAI Kota
RIGHT BACK

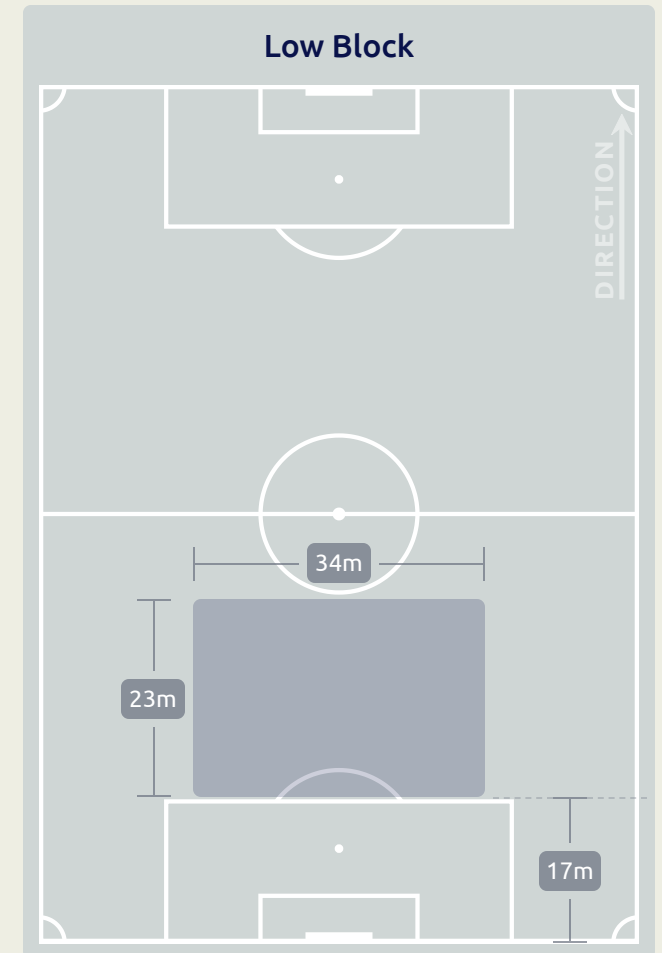
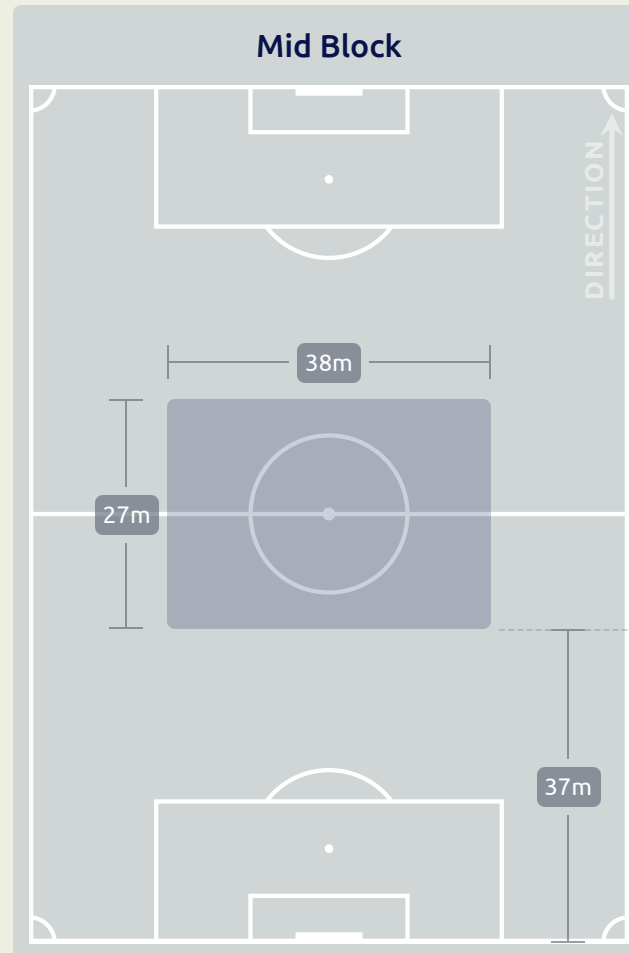
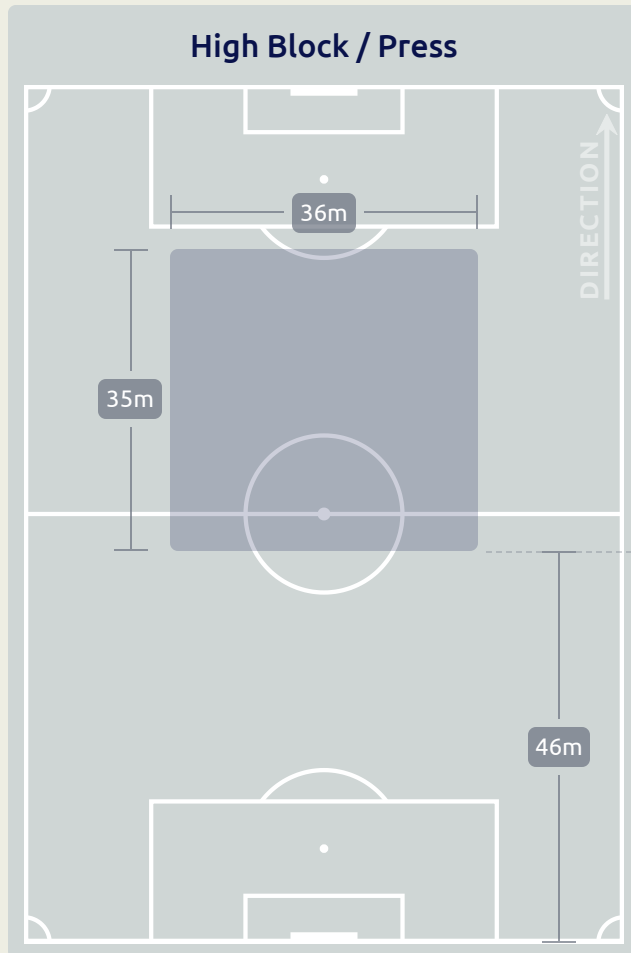
#	Player	Total Possession Regains
1	KIMURA Ryoya	8
3	TANAKA Hayato	4
6	FUKUI Taichi	7
7	MATSUKI Kuryu	2
8	SANO Kodai	3
10	KITANO Sota	0
13	CHASE Anrie	6
14	EINAGA Takatora	2
16	TAKAHASHI Niko	6
18	KUMATA Naoki	1
19	TAKAI Kota	10
2	MATSUDA Hayate	0
5	YAMANE Riku	3
9	FUKUDA Shio	0
15	YASHIKI Yusei	1
20	ABE Taisei	0

Defensive Line Height & Team Length





Defensive Line Height & Team Length

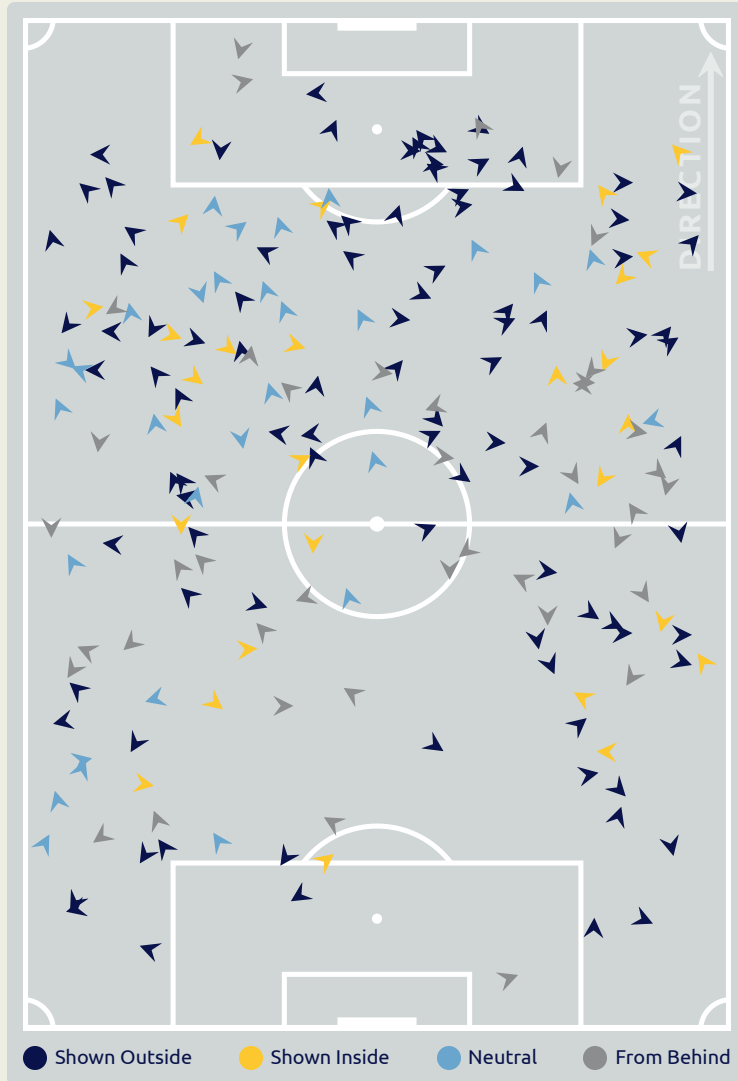


Defensive Pressure



Senegal

Japan



199	Total Pressures	293
40	Direct Pressures	65
1.2s	Avg Pressure Duration	1.2s
64	Forced Turnovers	68
7.76s	Ball Recovery Time	10.16s
110	Pushing on into Pressing	138
252	Pushing on	255
28	Pressing Direction Inside	50
96	Pressing Direction Outside	167

Most Direct Pressures

7

FAYE Souleymane
CENTRE FORWARD

Most Direct Pressures

13

TAKAI Kota
RIGHT BACK



GOALKEEPING

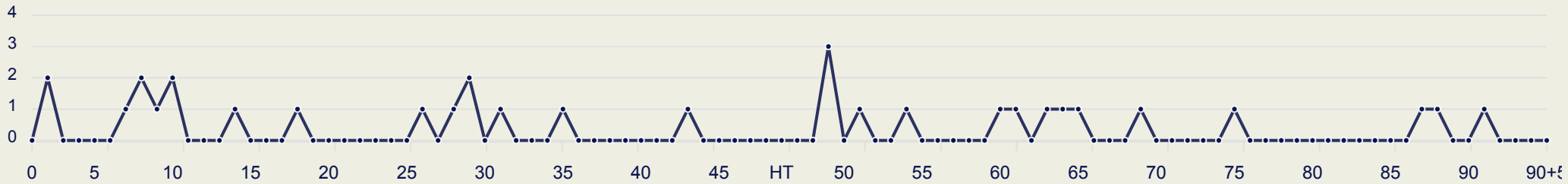


Senegal v Japan

Goalkeeping Involvement



Senegal GK Involvement Timeline

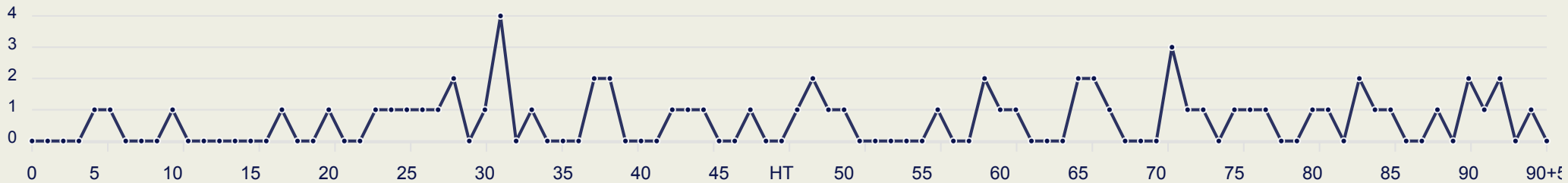


33

Total Involvements



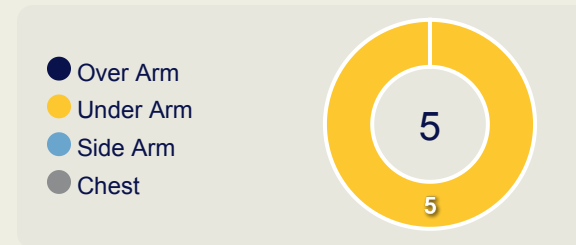
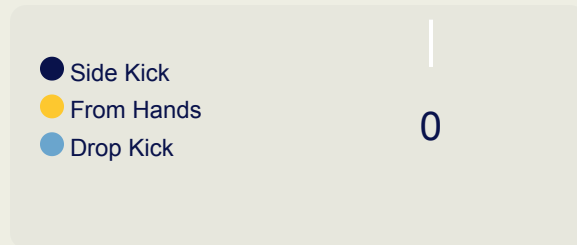
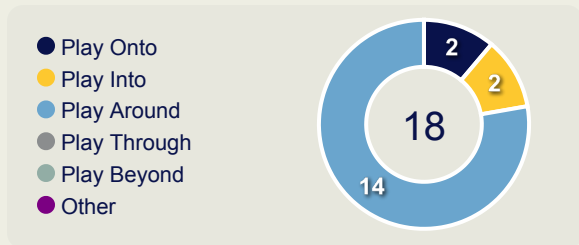
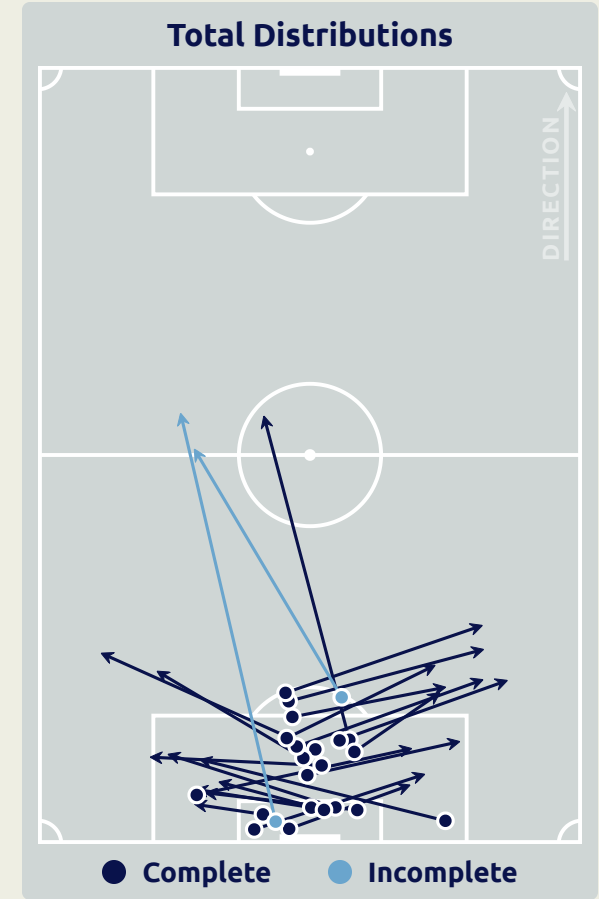
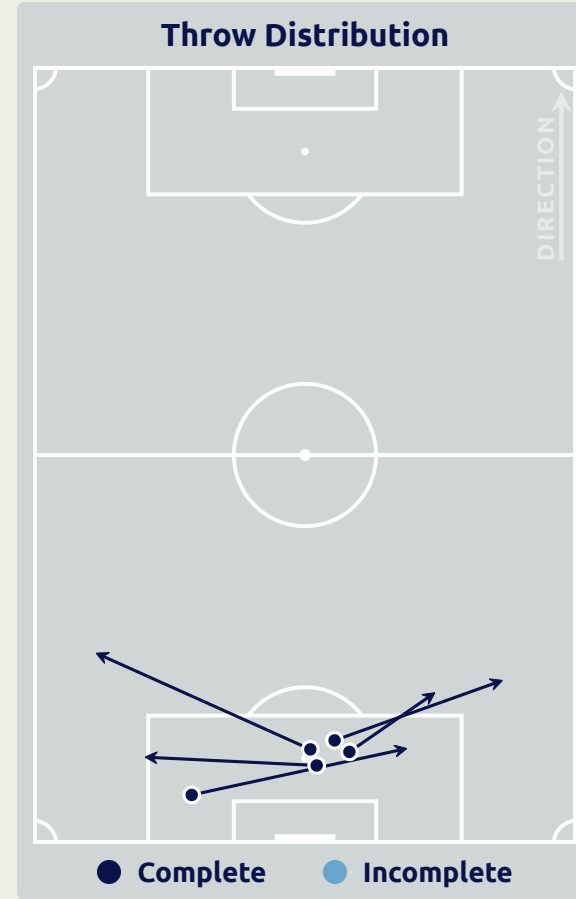
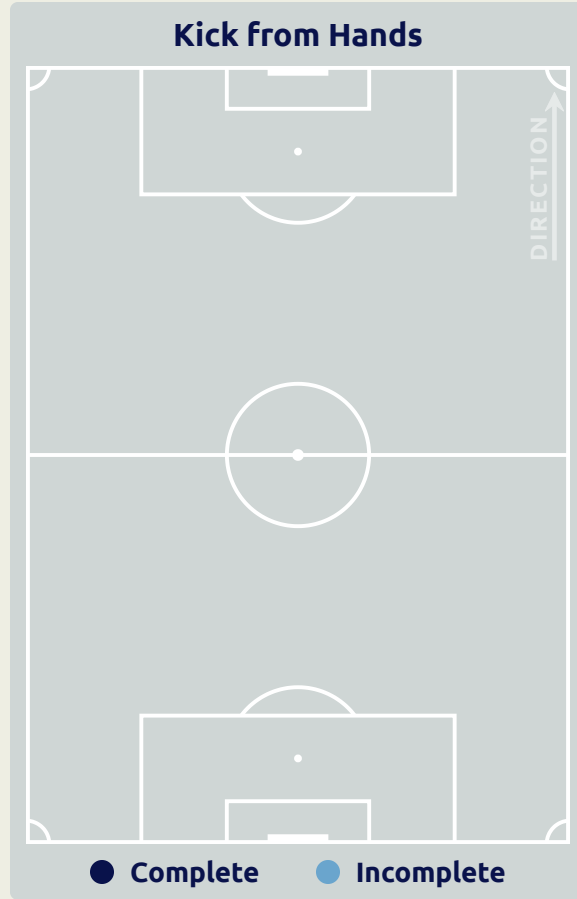
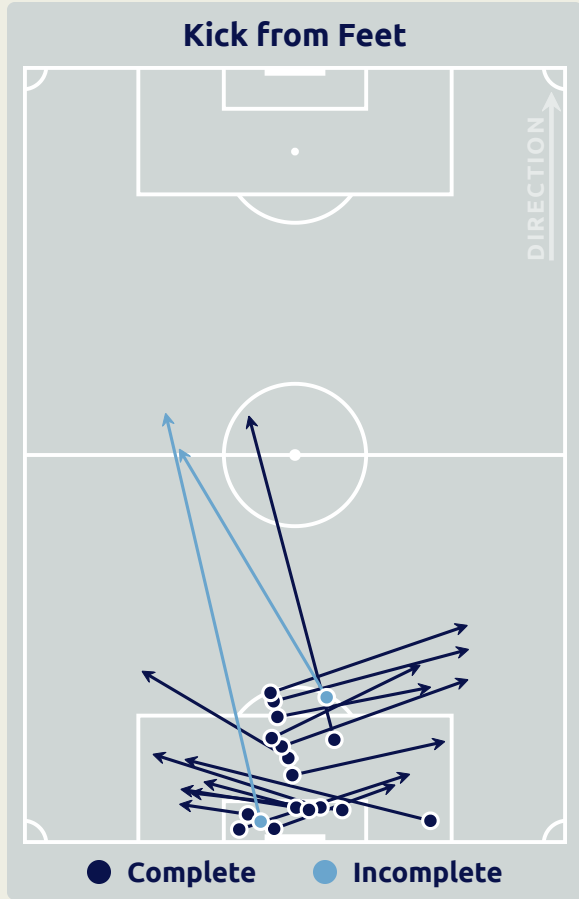
Japan GK Involvement Timeline



63

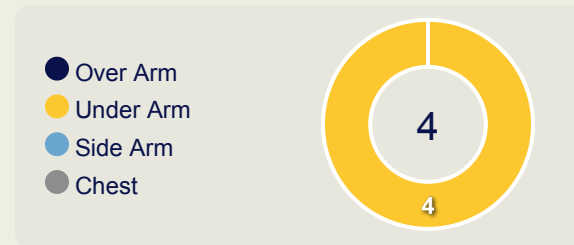
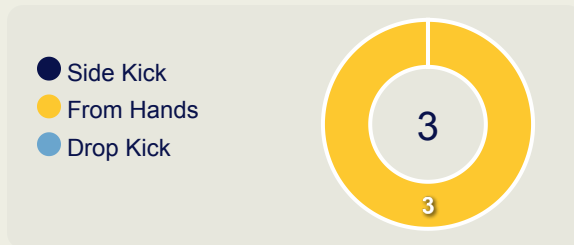
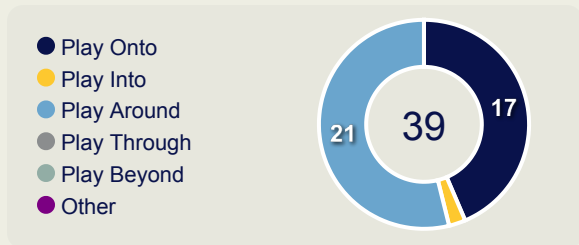
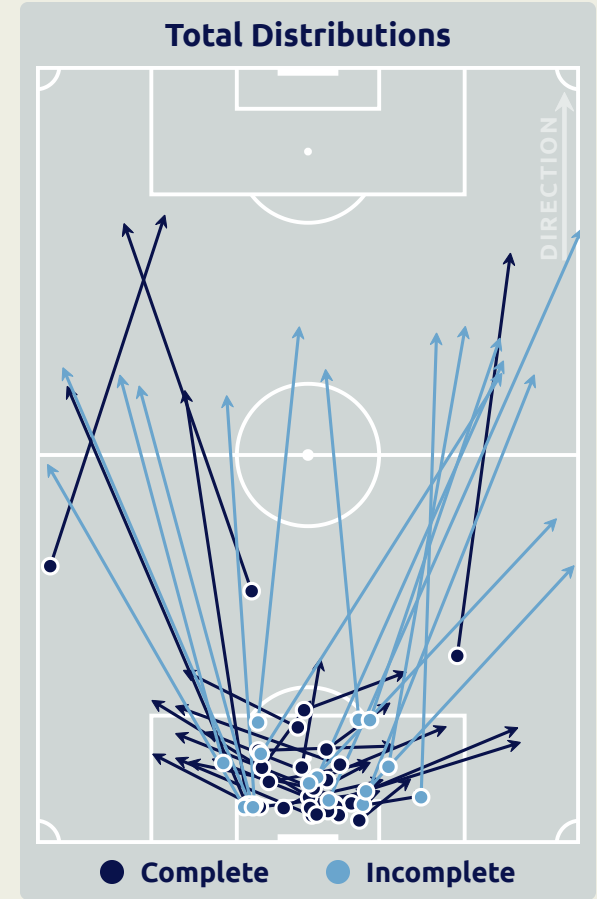
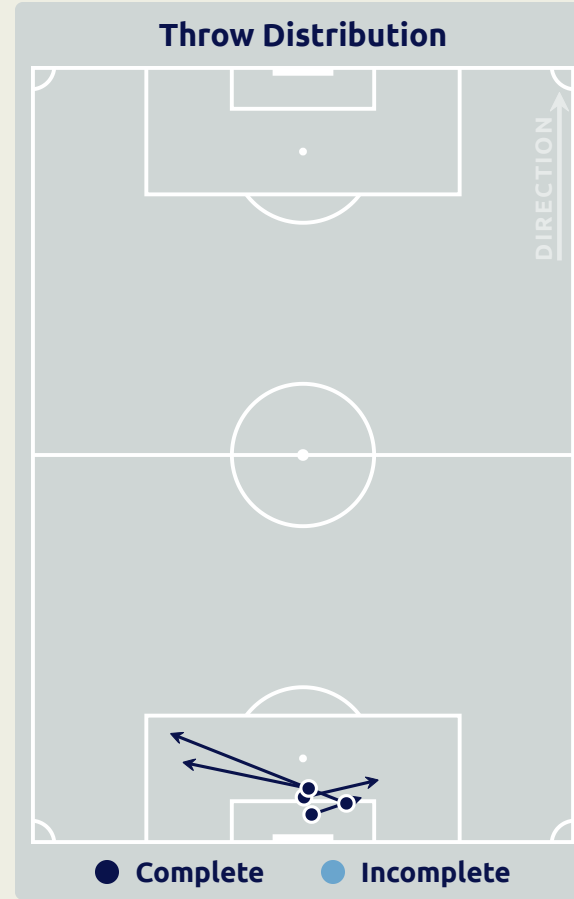
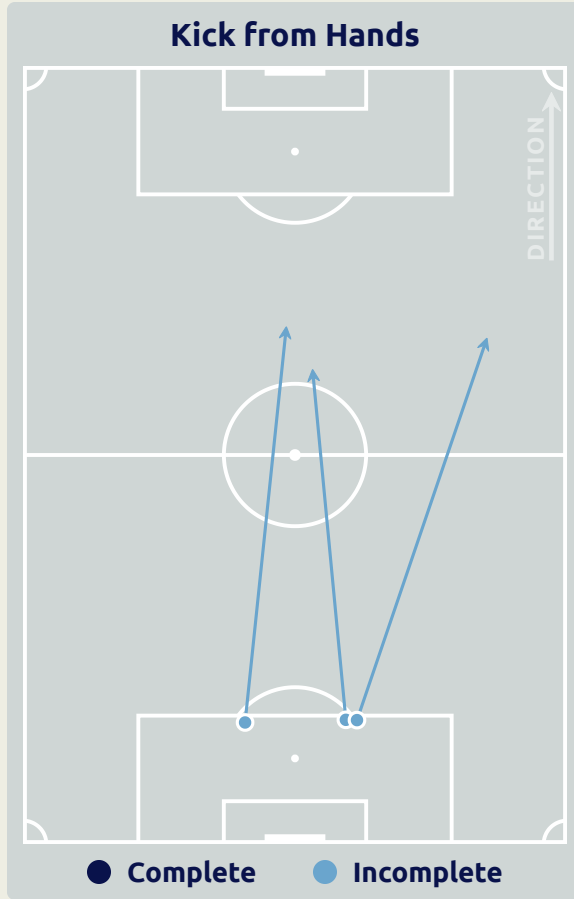
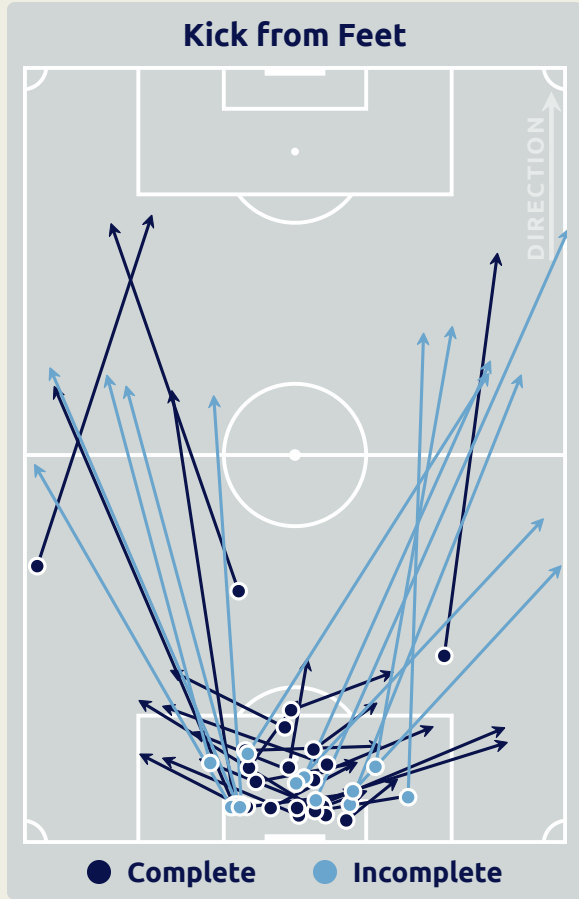
Total Involvements

Goalkeeping Distribution

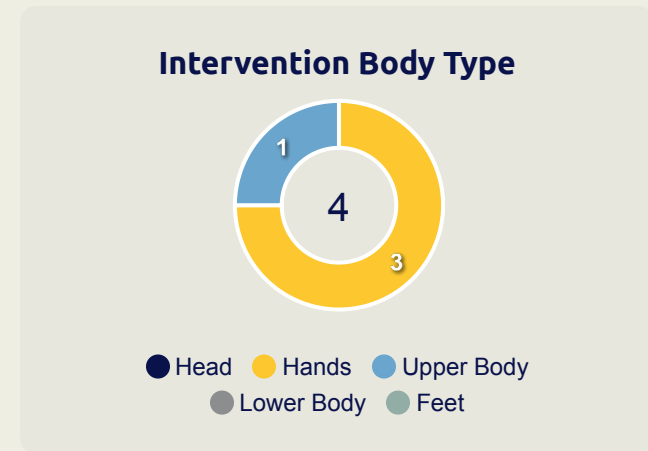
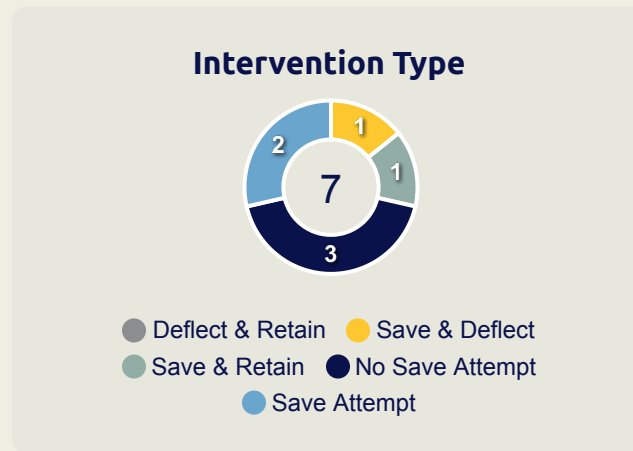
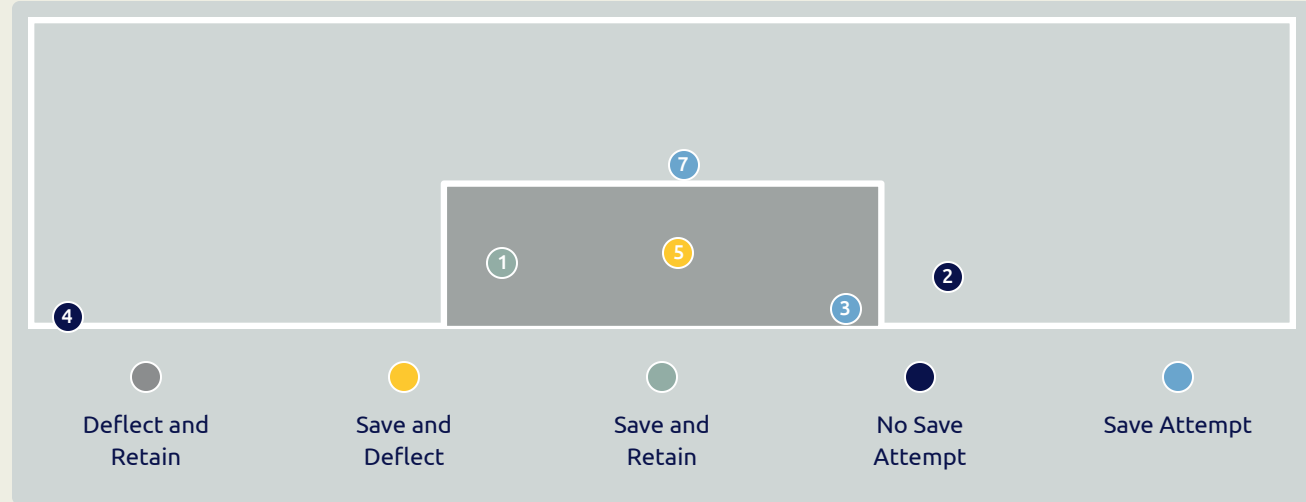
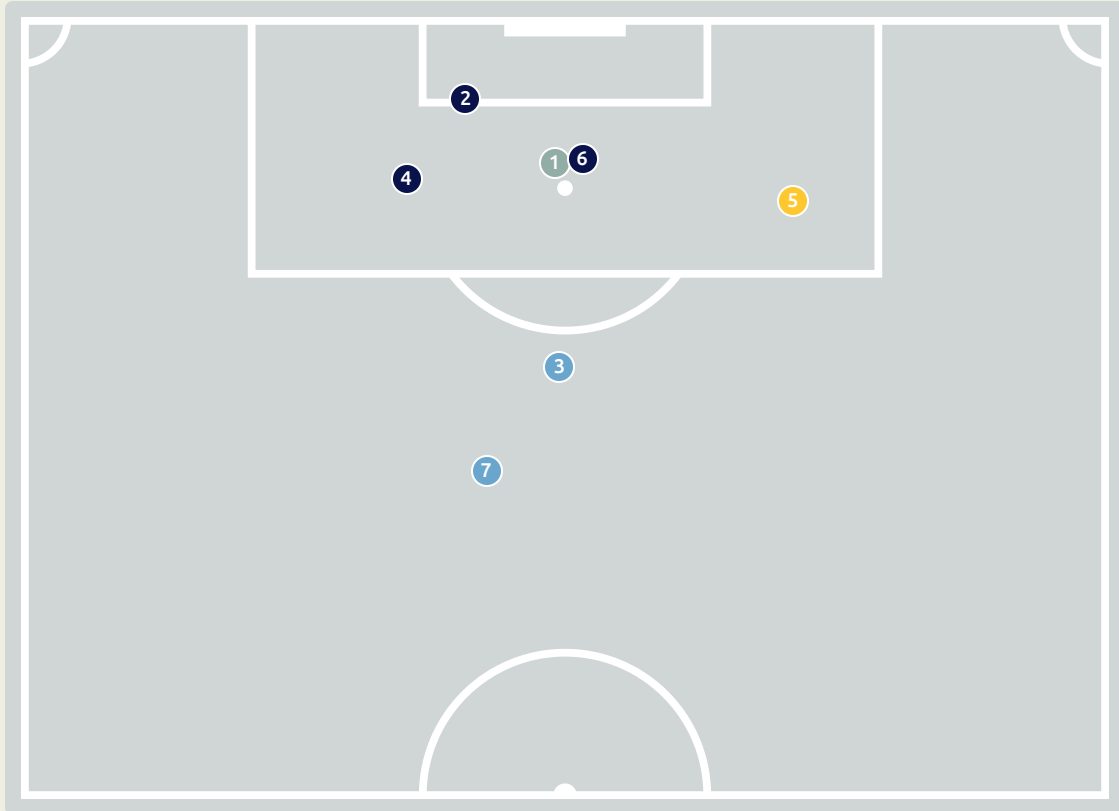




Goalkeeping Distribution



Goal Prevention



7
Total Attempts on Goal Faced

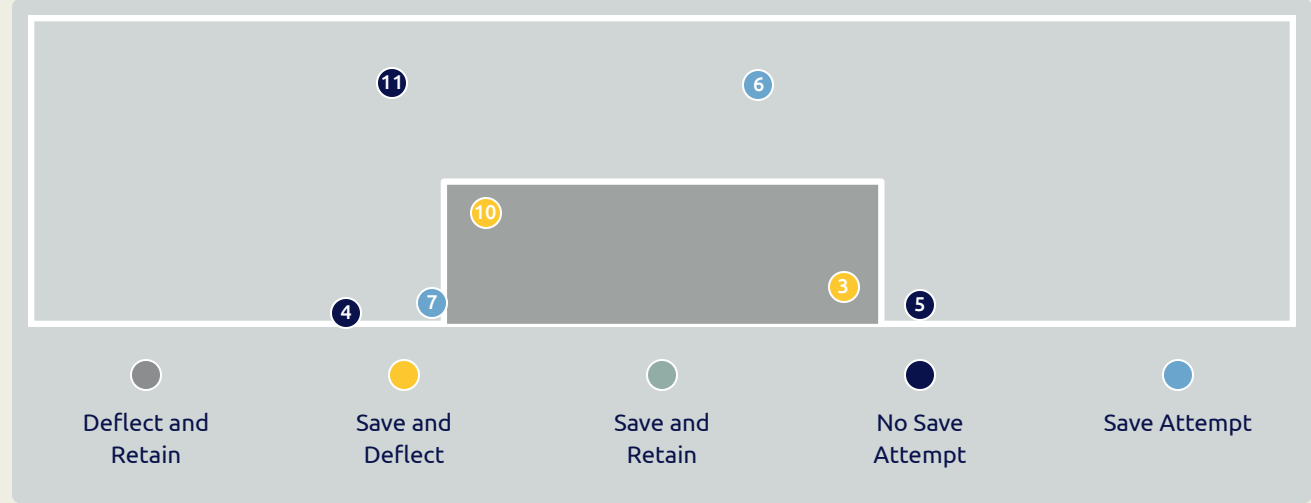
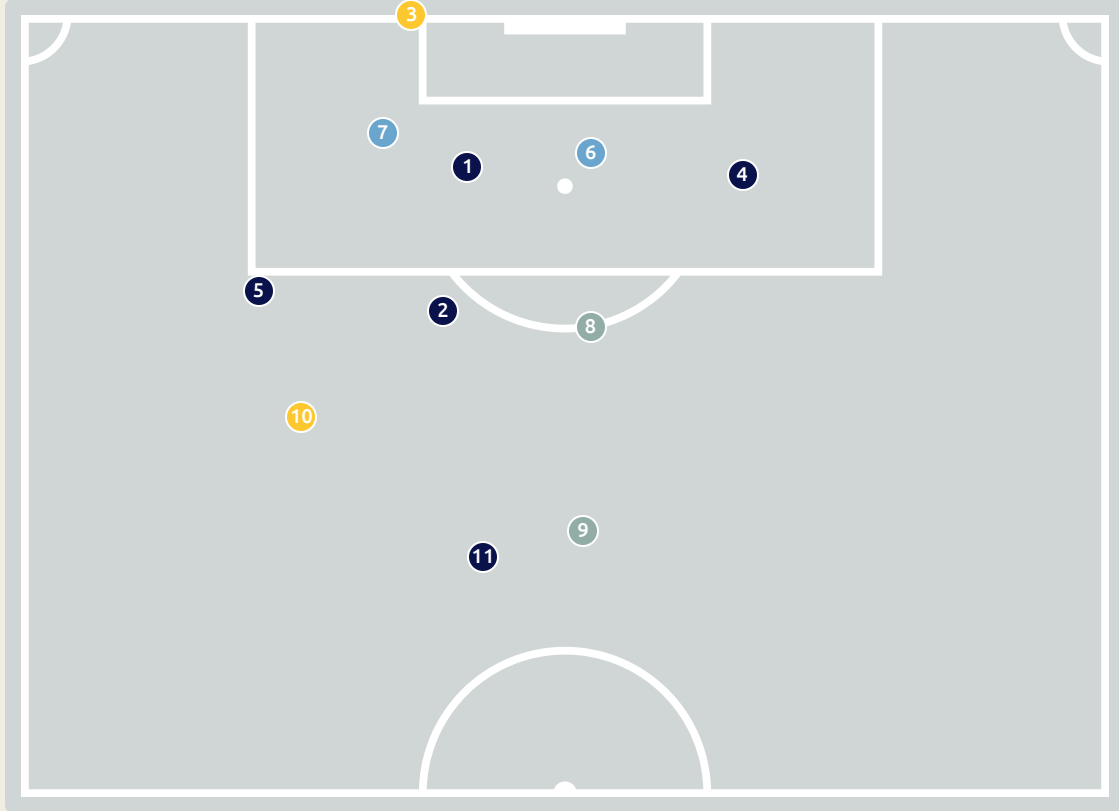
67
Save %

Total Attempts on Goal Faced	Total Goal Interventions	Save & Retain	Deflect & Retain	Save & Deflect	Save Attempt	No Save Attempt
7	2	1	0	1	2	3

Japan

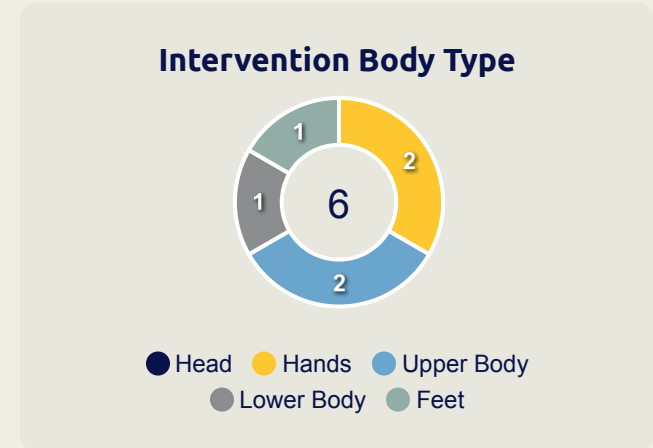
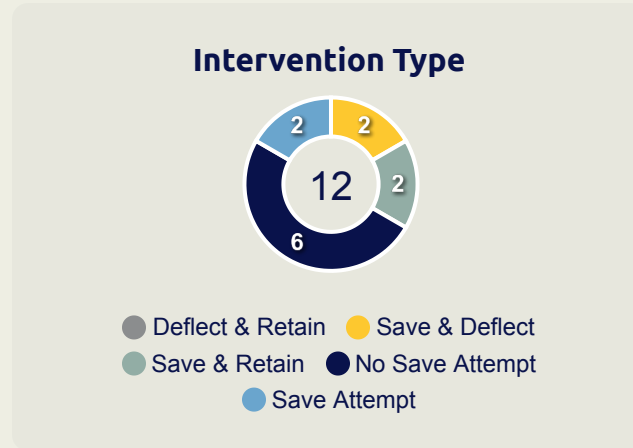


Goal Prevention



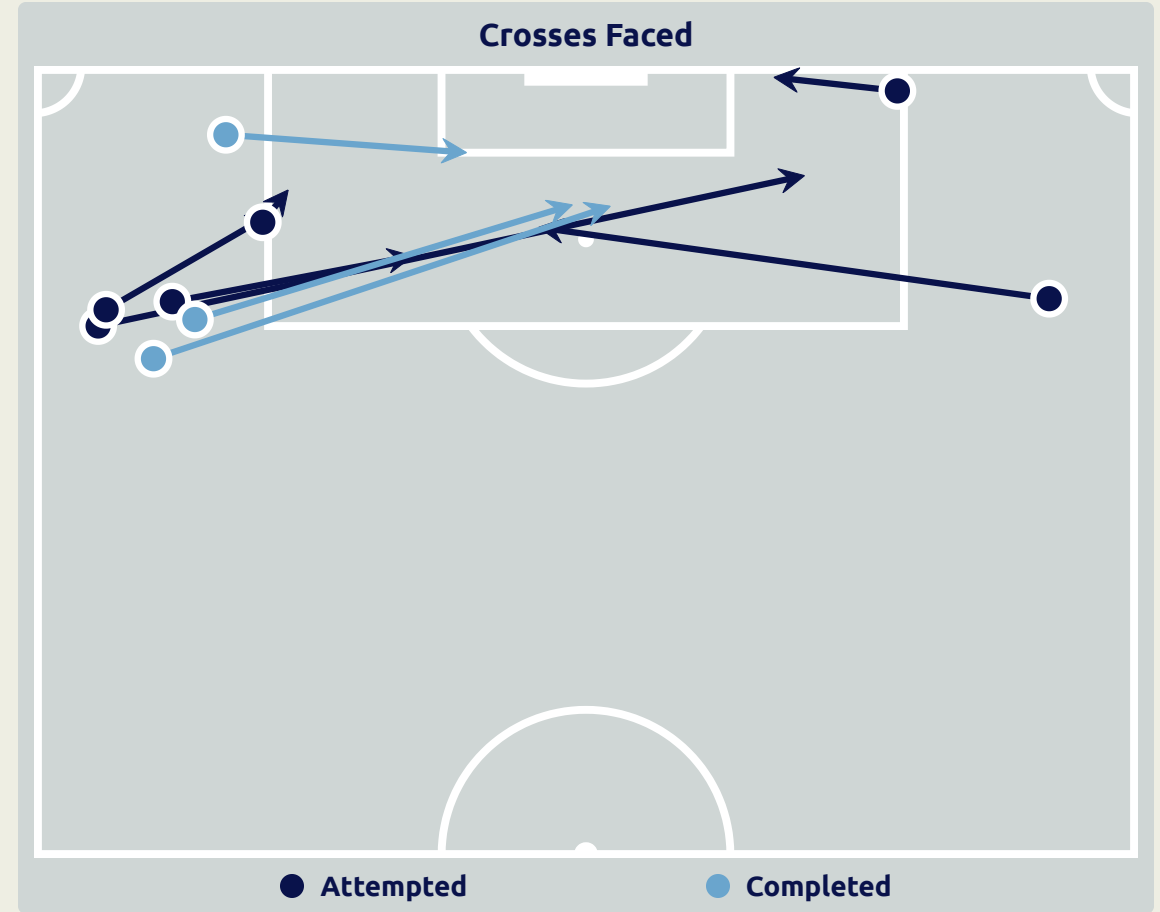
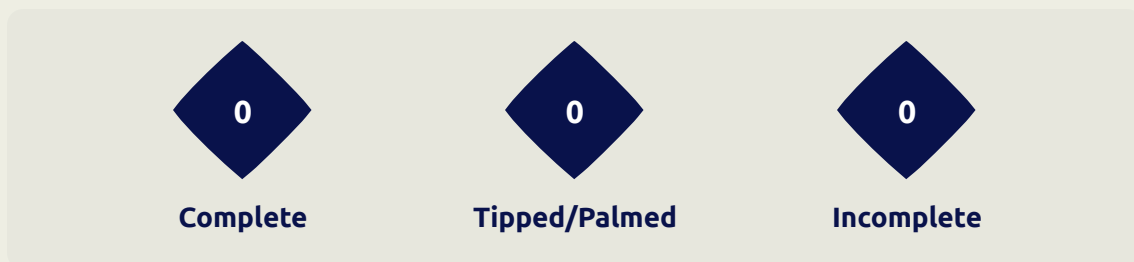
12
Total Attempts on Goal Faced

100
Save %



Total Attempts on Goal Faced	Total Goal Interventions	Save & Retain	Deflect & Retain	Save & Deflect	Save Attempt	No Save Attempt
12	4	2	0	2	2	6

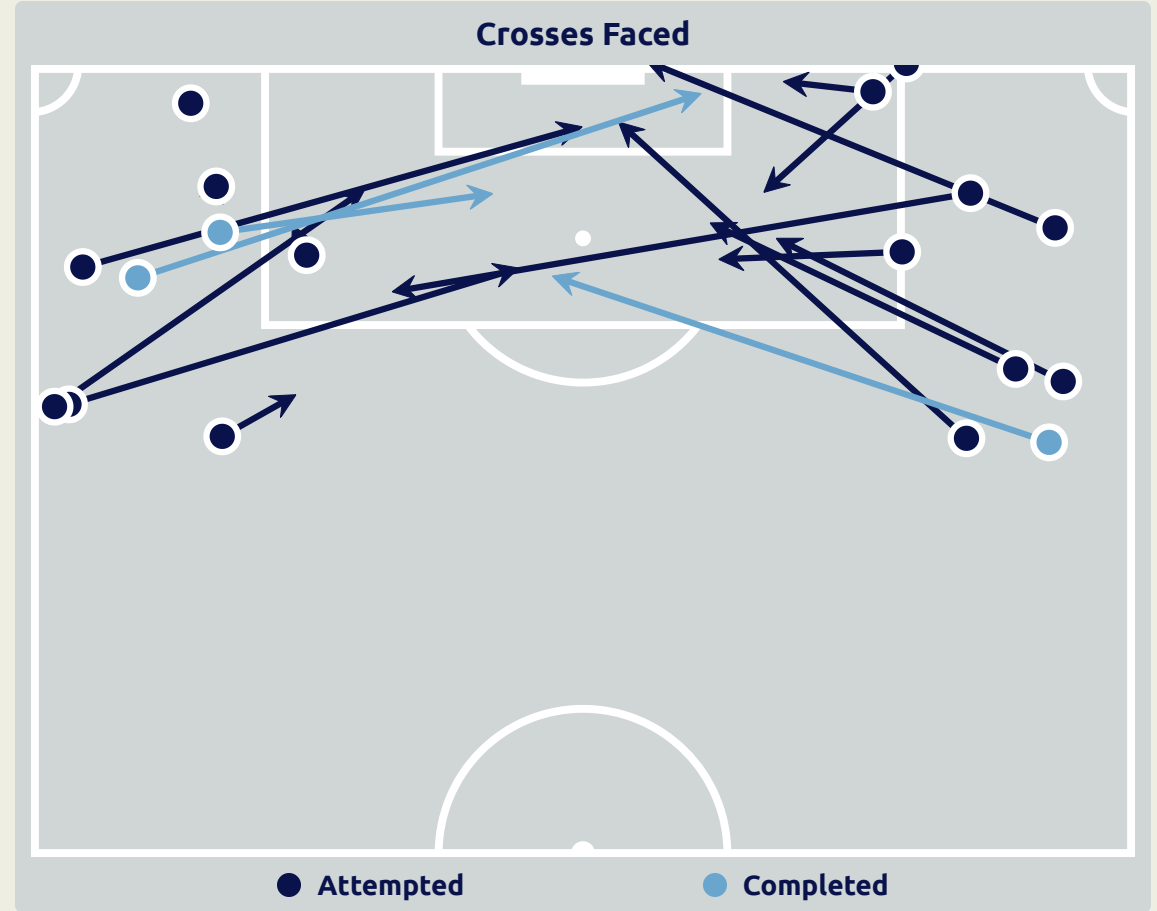
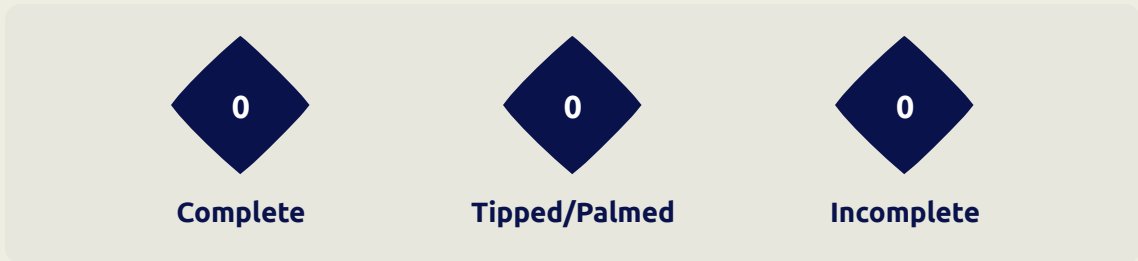
Aerial Control



Delivery Types Faced

Total	In Swing	Out Swing	Driven	Lofted	Cutback	Push
11	4	3	1	2	0	1

Aerial Control



Delivery Types Faced

Total	In Swing	Out Swing	Driven	Lofted	Cutback	Push
21	7	2	4	4	1	3

SET PLAYS



Senegal v Japan

Set Plays - Corners



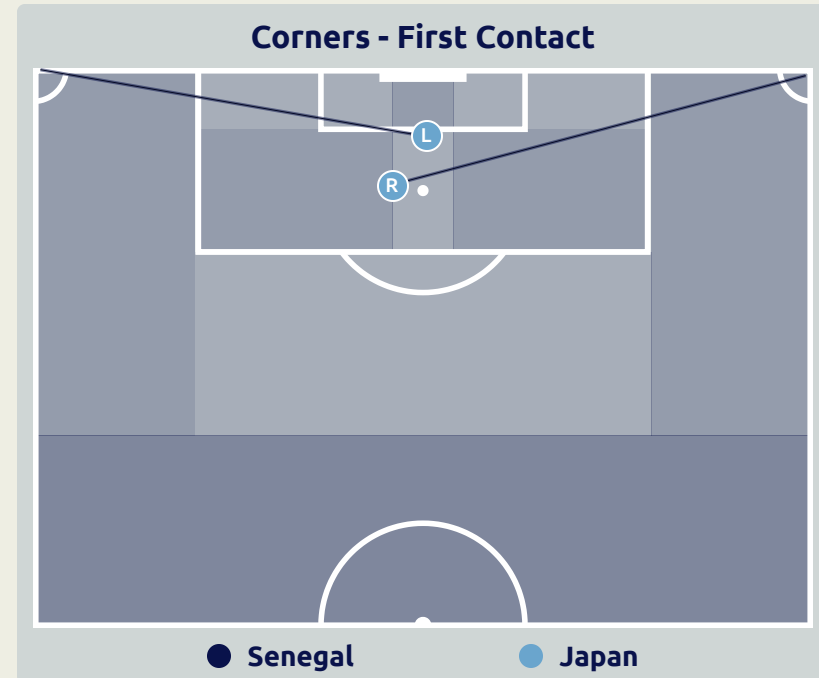
56
Total Set Plays

12
Total Free Kicks

0
Total Penalties

2
Total Corners

42
Total Throw Ins



Delivery Type	From Left Side	From Right Side	Total
Direct to Area	1	1	2
Short	0	0	0
Edge of Penalty Area	0	0	0

Delivery Style	Total
Inswing	1
Outswing	1
Driven	0

Free Kicks	
Type	Total
Direct	12
Direct (on target)	0
Direct (off target)	0
Indirect	0

First Contacts on Senegal Crosses

0 By Senegal **2** By Japan

Top 5 Player First Contacts		
Player	Team	Total
CHASE Anrie	Japan	2

Japan



Set Plays - Corners

50

Total Set Plays

21

Total Free Kicks

0

Total Penalties

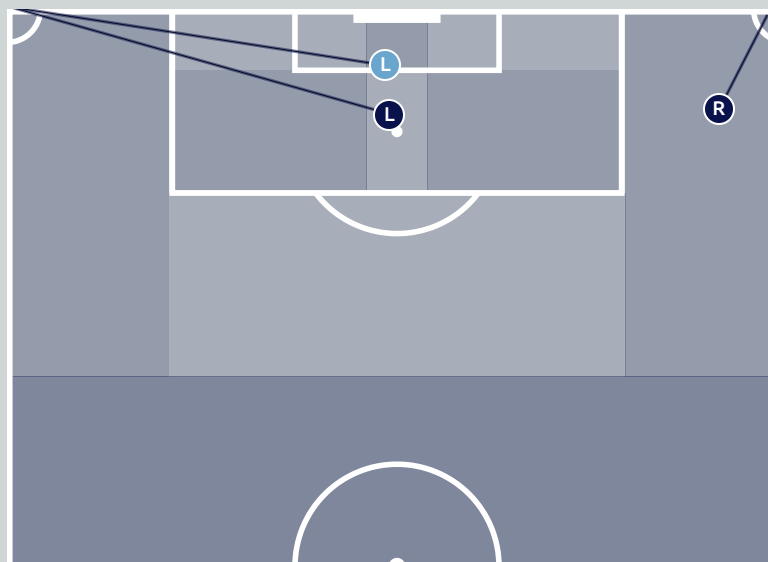
3

Total Corners

26

Total Throw Ins

Corners - First Contact



● Japan

● Senegal

Delivery Type	From Left Side	From Right Side	Total
Direct to Area	1	0	1
Short	1	1	2
Edge of Penalty Area	0	0	0

Delivery Style	Total
Inswing	1
Outswing	0
Driven	0

Free Kicks

Type	Total
Direct	16
Direct (on target)	0
Direct (off target)	1
Indirect	5

First Contacts on Japan Crosses

2

By Japan

1

By Senegal

Top 5 Player First Contacts

Player	Team	Total
TAKAHASHI Niko	Japan	1
TAKAI Kota	Japan	1
NDIAYE Babacar	Senegal	1

INDIVIDUAL DATA IN POSSESSION



Senegal v Japan

In Possession - Distributions



#	Player	Passes Attempted	Passes Completed	Pass Completion %	Switches of Play	Crosses Attempted	Crosses Completed	Line Breaks Attempted	Line Breaks Completed	Line Break Completion %	Ball Progressions	Take Ons	Step Ins	Attempts at Goal	Goals
16	NDIAYE Mamour	23	21	91%	0	0	0	3	1	33%	0	0	0	0	0
3	DIARRA Djibril	31	31	100%	0	0	0	5	5	100%	0	0	0	0	0
4	CAMARA Mamadou	54	43	80%	1	0	0	14	9	64%	0	0	0	2	0
6	BASSE Souleymane	85	73	86%	0	3	1	34	24	70%	4	3	0	0	0
8	DIOP Amidou	53	48	91%	0	4	1	20	16	80%	3	2	1	0	0
9	FAYE Souleymane	28	20	71%	0	3	0	5	3	60%	6	3	3	1	0
10	DIALLO Samba	12	7	58%	0	0	0	3	1	33%	4	3	1	2	0
12	NDIAYE Babacar	61	50	82%	2	0	0	16	7	43%	2	0	2	0	0
13	SANO Seydou	66	54	82%	5	1	0	24	15	62%	4	1	3	2	0
17	FAYE Mame Mor	12	7	58%	0	2	0	5	1	20%	2	1	1	3	0
20	DIOP Pape Demba	53	38	72%	0	6	0	17	9	52%	0	0	0	0	0
5	SECK Ibrahima	9	8	89%	0	1	1	2	2	100%	1	1	0	1	0
14	NGOM Libasse	5	4	80%	1	1	0	2	1	50%	0	0	0	0	0

In Possession - Offers & Receptions



			Offer movement types						
#	Player	Total Offers	In Front	In Between	Out to In	In to Out	In Behind	No Movement	Offers Received
16	NDIAYE Mamour	2	0	0	0	0	0	2	0
3	DIARRA Djibril	39	24	5	0	2	4	4	14
4	CAMARA Mamadou	22	16	2	0	1	0	3	7
6	BASSE Souleymane	25	4	0	0	1	11	9	8
8	DIOP Amidou	46	18	0	1	0	9	18	23
9	FAYE Souleymane	43	4	6	2	2	24	5	14
10	DIALLO Samba	37	2	9	0	1	13	12	17
12	NDIAYE Babacar	15	2	0	0	0	0	13	12
13	SANO Seydou	17	1	0	0	0	0	16	10
17	FAYE Mame Mor	44	0	10	2	3	25	4	8
20	DIOP Pape Demba	26	5	9	2	3	5	2	7
5	SECK Ibrahima	22	4	1	1	0	11	5	8
14	NGOM Libasse	10	2	5	0	0	3	0	2

Japan



In Possession - Distributions

#	Player	Passes Attempted	Passes Completed	Pass Completion %	Switches of Play	Crosses Attempted	Crosses Completed	Line Breaks Attempted	Line Breaks Completed	Line Break Completion %	Ball Progressions	Take Ons	Step Ins	Attempts at Goal	Goals
1	KIMURA Ryoya	46	30	65%	0	0	0	18	5	27%	0	0	0	0	0
3	TANAKA Hayato	71	58	82%	1	0	0	23	15	65%	1	0	1	0	0
6	FUKUI Taichi	38	31	82%	1	2	1	12	7	58%	2	1	1	0	0
7	MATSUKI Kuryu	26	17	65%	1	1	0	8	4	50%	0	0	0	3	1
8	SANO Kodai	33	24	73%	0	4	1	16	8	50%	5	5	0	2	0
10	KITANO Sota	23	15	65%	0	0	0	1	1	100%	1	1	0	0	0
13	CHASE Anrie	54	50	93%	0	0	0	8	7	87%	1	0	1	0	0
14	EINAGA Takatora	13	6	46%	0	0	0	4	2	50%	1	1	0	0	0
16	TAKAHASHI Niko	42	35	83%	0	4	1	14	8	57%	0	0	0	0	0
18	KUMATA Naoki	8	8	100%	0	0	0	1	1	100%	3	2	1	1	0
19	TAKAI Kota	46	36	78%	1	0	0	24	15	62%	0	0	0	1	0
2	MATSUDA Hayate	0	0	0%	0	0	0	0	0	0%	0	0	0	0	0
5	YAMANE Riku	6	6	100%	0	0	0	1	1	100%	0	0	0	0	0
9	FUKUDA Shio	1	1	100%	0	0	0	0	0	0%	1	0	1	0	0
15	YASHIKI Yusei	1	0	0%	0	0	0	1	0	0%	0	0	0	0	0
20	ABE Taisei	0	0	0%	0	0	0	0	0	0%	0	0	0	0	0

In Possession - Offers & Receptions

			Offer movement types						
#	Player	Total Offers	In Front	In Between	Out to In	In to Out	In Behind	No Movement	Offers Received
1	KIMURA Ryoya	12	0	0	0	0	0	12	5
3	TANAKA Hayato	15	1	0	0	0	0	14	11
6	FUKUI Taichi	31	13	12	0	0	1	5	11
7	MATSUKI Kuryu	53	11	16	3	3	16	4	11
8	SANO Kodai	38	12	3	0	2	8	13	11
10	KITANO Sota	68	8	19	8	7	15	11	11
13	CHASE Anrie	18	2	0	0	0	0	16	6
14	EINAGA Takatora	24	0	0	0	0	13	11	5
16	TAKAHASHI Niko	39	13	0	1	0	4	21	11
18	KUMATA Naoki	50	0	24	4	3	19	0	11
19	TAKAI Kota	17	9	0	0	0	1	7	11
2	MATSUDA Hayate	0	0	0	0	0	0	0	0
5	YAMANE Riku	23	11	7	1	2	0	2	2
9	FUKUDA Shio	3	0	0	0	0	2	1	1
15	YASHIKI Yusei	3	0	0	0	0	2	1	0
20	ABE Taisei	1	0	1	0	0	0	0	1

INDIVIDUAL DATA OUT OF POSSESSION



Senegal v Japan

Out of Possession



#	Player	Tackles Made / Won	Blocks	Interceptions	Pressing Direct	Pressing Indirect	Duels Won - Aerial	Duels Won - Physical	Possession Contests won	Clearances	Loose Ball Receptions	Pushing On	Pushing On into Pressing	Possession Regains	Possession Interrupted
16	NDIAYE Mamour	0 / 0	0	0	0	0	0	0	0	0	2	0	0	5	0
3	DIARRA Djibril	5 / 0	4	0	6	13	4	0	5	2	4	29	7	2	7
4	CAMARA Mamadou	1 / 1	1	2	2	7	4	0	4	1	6	18	2	6	1
6	BASSE Souleymane	5 / 1	5	1	6	11	6	0	6	5	13	29	10	7	3
8	DIOP Amidou	2 / 1	1	0	1	9	3	0	3	1	9	25	3	3	2
9	FAYE Souleymane	5 / 1	2	0	7	38	0	0	0	0	4	48	26	2	1
10	DIALLO Samba	3 / 1	0	0	3	15	1	1	2	0	1	18	15	2	0
12	NDIAYE Babacar	4 / 1	1	0	1	3	3	0	3	6	4	4	2	6	4
13	SANO Seydou	1 / 1	3	2	3	6	3	0	3	10	8	15	3	8	8
17	FAYE Mame Mor	4 / 1	1	1	5	14	5	0	6	0	4	20	9	2	2
20	DIOP Pape Demba	2 / 1	2	0	6	27	1	0	1	0	7	30	19	2	1
5	SECK Ibrahima	0 / 0	0	0	0	5	0	0	0	0	0	4	4	0	0
14	NGOM Libasse	0 / 0	1	0	0	11	0	0	0	0	0	12	10	0	0

Out of Possession

Japan



#	Player	Tackles Made / Won	Blocks	Interceptions	Pressing Direct	Pressing Indirect	Duels Won - Aerial	Duels Won - Physical	Possession Contests won	Clearances	Loose Ball Receptions	Pushing On	Pushing On into Pressing	Possession Regains	Possession Interrupted
1	KIMURA Ryoya	0 / 0	0	0	0	0	0	0	0	0	5	0	0	8	0
3	TANAKA Hayato	0 / 0	0	0	0	4	2	1	3	7	5	2	0	4	3
6	FUKUI Taichi	1 / 0	3	3	3	16	1	0	1	4	14	19	7	7	3
7	MATSUKI Kuryu	7 / 0	3	0	12	37	2	0	2	3	5	32	22	2	3
8	SANO Kodai	0 / 0	1	2	6	23	1	0	2	2	5	25	13	3	3
10	KITANO Sota	4 / 0	0	0	5	30	1	0	1	0	2	32	24	0	1
13	CHASE Anrie	2 / 0	4	2	7	5	3	1	4	9	4	19	7	6	5
14	EINAGA Takatora	2 / 0	2	1	3	26	0	0	0	3	3	19	10	2	3
16	TAKAHASHI Niko	5 / 3	3	0	8	10	1	0	1	9	7	23	10	6	7
18	KUMATA Naoki	1 / 1	0	0	3	20	7	0	7	1	1	24	12	1	1
19	TAKAI Kota	8 / 2	3	2	13	12	2	0	2	9	6	20	13	10	8
2	MATSUDA Hayate	0 / 0	0	0	0	0	0	0	0	0	0	1	0	0	0
5	YAMANE Riku	1 / 0	1	0	0	14	0	0	1	1	1	16	6	3	0
9	FUKUDA Shio	0 / 0	1	0	1	9	1	1	2	0	2	7	4	0	1
15	YASHIKI Yusei	0 / 0	0	1	3	18	0	0	0	0	0	12	7	1	0
20	ABE Taisei	0 / 0	0	0	1	4	0	0	0	0	0	4	3	0	0

INDIVIDUAL DATA PHYSICAL



Senegal v Japan

Physical Data



#	Player	Total Distance (m)	Zone 1: 0-7 km/h (m)	Zone 2: 7-15 km/h (m)	Zone 3: 15-20 km/h (m)	Zone 4: 20-25 km/h (m)	Zone 5: 25+ km/h (m)	High Speed Runs (Zone 4)	Sprints (Zone 5)	Top Speed (km/h)
16	NDIAYE Mamour	3261.5	2467.7	715.6	70.8	7.5	0	11	1	20.3
3	DIARRA Djibril	10827.6	3751.8	4898.4	1626.3	463.4	87.7	136	40	30.9
4	CAMARA Mamadou	10924.1	3580.9	6207.1	982.1	115.8	37.1	78	11	29.0
6	BASSE Souleymane	10977.9	3447.1	5178.3	1371.1	743.2	239.3	120	65	33.2
8	DIOP Amidou	10158.8	3745.6	4078.8	1525.9	624.8	183.9	130	48	30.7
9	FAYE Souleymane	11386.1	3754.0	4910.8	1764.8	726.4	230.0	150	58	31.5
10	DIALLO Samba	7662.0	3463.2	2970.6	793.8	235.2	199.2	78	28	31.4
12	NDIAYE Babacar	10044.4	3534.6	4779.1	1377.1	345.5	8.0	128	30	28.5
13	SANO Seydou	10325.7	3465.3	4804.5	1503.4	522.5	29.9	127	41	27.9
17	FAYE Mame Mor	8752.9	3292.8	3502.9	1151.0	547.1	259.1	102	50	32.0
20	DIOP Pape Demba	11152.0	3273.1	5216.9	2154.6	418.2	89.2	172	37	30.2
5	SECK Ibrahima	2490.9	648.9	1235.7	347.0	223.9	35.6	28	14	28.9
14	NGOM Libasse	2577.6	593.6	1367.4	432.5	161.4	22.7	38	13	27.7

Physical Data

Japan



#	Player	Total Distance (m)	Zone 1: 0-7 km/h (m)	Zone 2: 7-15 km/h (m)	Zone 3: 15-20 km/h (m)	Zone 4: 20-25 km/h (m)	Zone 5: 25+ km/h (m)	High Speed Runs (Zone 4)	Sprints (Zone 5)	Top Speed (km/h)
1	KIMURA Ryoya	4461.8	3356.6	973.1	112.9	19.2	0	20	2	21.8
3	TANAKA Hayato	9986.1	3943.5	4587.6	969.6	418.4	66.9	87	34	30.2
6	FUKUI Taichi	10075.1	3395.3	4918.7	1234.2	470.5	55.4	99	36	29.0
7	MATSUKI Kuryu	11926.0	3298.7	6069.1	1772.2	685.7	100.2	151	51	30.7
8	SANO Kodai	11480.3	3671.4	5224.7	2002.2	485.6	96.4	149	38	28.8
10	KITANO Sota	9463.1	2977.1	4381.4	1304.0	569.7	230.9	118	47	30.7
13	CHASE Anrie	10247.4	3515.9	5054.0	1101.6	455.0	120.9	107	36	30.3
14	EINAGA Takatora	6077.9	1794.8	2949.0	861.8	410.9	61.4	74	33	31.2
16	TAKAHASHI Niko	10621.2	3270.3	5143.9	1157.7	767.9	281.5	126	69	30.8
18	KUMATA Naoki	9051.2	3472.9	3863.9	1095.2	514.1	105.9	101	40	30.8
19	TAKAI Kota	10761.0	4541.1	4337.8	1123.4	523.0	235.7	115	38	31.9
2	MATSUDA Hayate	125.5	27.6	61.9	18.5	17.4	0	2	1	22.3
5	YAMANE Riku	5874.7	1660.2	3086.6	847.7	266.1	14.1	74	21	27.3
9	FUKUDA Shio	1838.4	413.6	936.3	289.2	176.7	22.6	28	13	27.7
15	YASHIKI Yusei	1957.2	555.1	822.2	330.2	221.9	27.8	26	15	29.7
20	ABE Taisei	604.7	148.8	262.5	97.3	96.0	0	9	5	27.6

