



FIFA
U-17 WOMEN'S
WORLD CUP
DOMINICAN REPUBLIC 2024
POST MATCH SUMMARY REPORT

England 4 - 2 Mexico

Group C - Match 14

20 October 2024

19:00 Kick Off

CFC Stadium



Match Summary - Teams

England



Mexico

STARTING

- 21 GK SPENCER Eva
- 2 DF LAS Nelly 61'
- 3 DF MALTBY Rachel 39' 88'
- 4 MF HARBERT Laila
- 5 DF SHAW Zara 11'
- 6 DF WELLESLEY-SMITH Cecily 17'
- 7 MF PARKINSON Erica 86'
- 8 MF JUNAID Omotara 53'
- 10 FW JONES Vera 76'
- 11 FW BROWN Lola 45'
- 20 FW OBOAVWODUO Jane 52' 90+5'

SUBSTITUTES

- 1 GK McSHEFFREY Hope
- 13 GK DOWSETT Rebekah
- 9 FW JOHNSON Olivia 90+5' 90+11'
- 12 DF HARWOOD Sophie 86'
- 14 MF CASSAP Emily 76'
- 15 DF PEACOCK Niamh
- 16 DF SHERWOOD Simone
- 17 FW THOMPSON Lauryn 45'
- 18 FW FISHER Izzy
- 19 DF GRAY Eva

STARTING

- VAZQUEZ Camila GK 1
- 103'

GONZALEZ Adrianna DF 2
- DE LEON Nicol DF 4
- 70'

SOTO Alexa MF 8
- FRAGOSO Abril MF 10
- MIYAZATO Anaiya FW 11
- IBARRA Berenice DF 13
- 30'

SALAS Ana MF 16
- 70'

VAZQUEZ Naomy FW 17
- 70'

MARTINEZ Alexa DF 18
- 62'

REYES Citlalli MF 20

SUBSTITUTES

- DEL REAL Barbara GK 12
- MEZA Adriana GK 21
- MUNOZ Natalia DF 3
- 74'

70'

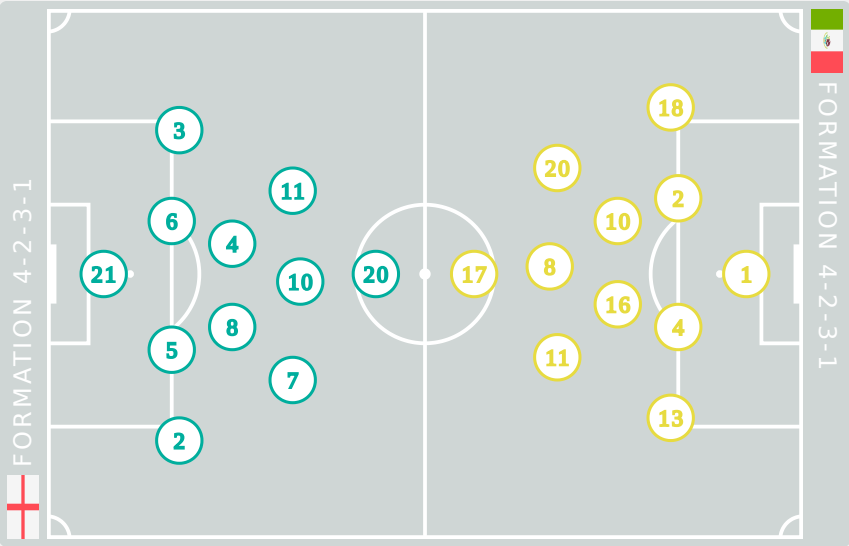
VILLALPANDO Mia DF 5
- 30'

MONTES Monique MF 6
- 70'

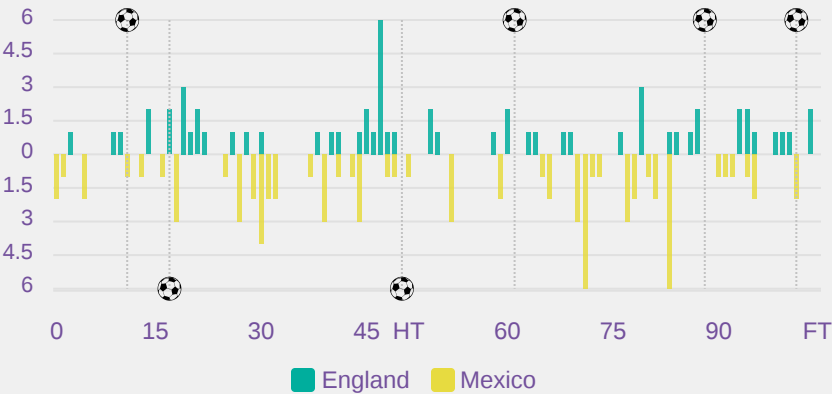
TORRES Ana FW 7
- 62'

CONTRERAS Evelyn FW 9
- MARTINEZ Celeste FW 14
- GALLEGOS Daniela DF 15
- 70'

NUNEZ Sofia MF 19



Distribution in the Final Third



Match Summary - Key Statistics

 England

4

→

2

Mexico



| Possession | | | | | |
|------------|------------------------------------------------|-------|-------|-------|-----------|
| Total | 35.4% | 15.3% | 49.2% | Total | |
| 4 | Goals | | | | 2 |
| 14 (7) | Attempts at Goal (On Target) | | | | 17 (7) |
| 231 (151) | Total Passes (Complete) | | | | 338 (245) |
| 65 % | Pass Completion % | | | | 72 % |
| 47 | Completed Line Breaks | | | | 64 |
| 9 | Defensive Line Breaks | | | | 6 |
| 52 | Receptions in the Final Third | | | | 67 |
| 8 | Crosses | | | | 9 |
| 12 | Ball Progressions | | | | 7 |
| 216 (76) | Defensive Pressures Applied (Direct Pressures) | | | | 124 (45) |
| 55 | Forced Turnovers | | | | 39 |
| 73 | Second Balls | | | | 95 |
| 99.5 km | Total Distance Covered | | | | 103.6 km |
| 4.3 km | Zone 4 - Low Speed Sprinting: 19-23km/h | | | | 3.9 km |



Phases of Play



IN POSSESSION



OUT OF POSSESSION





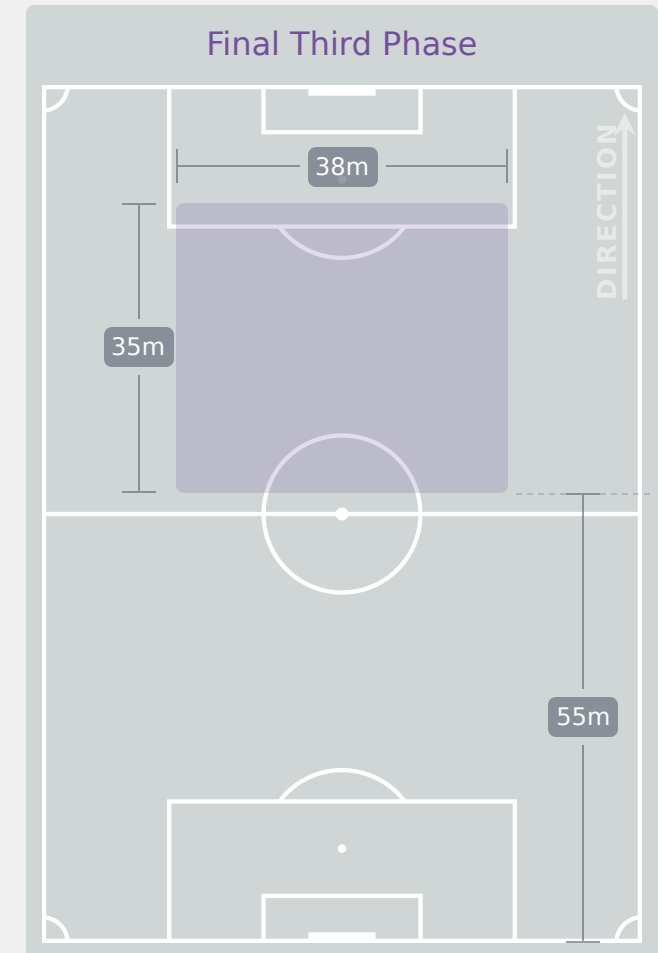
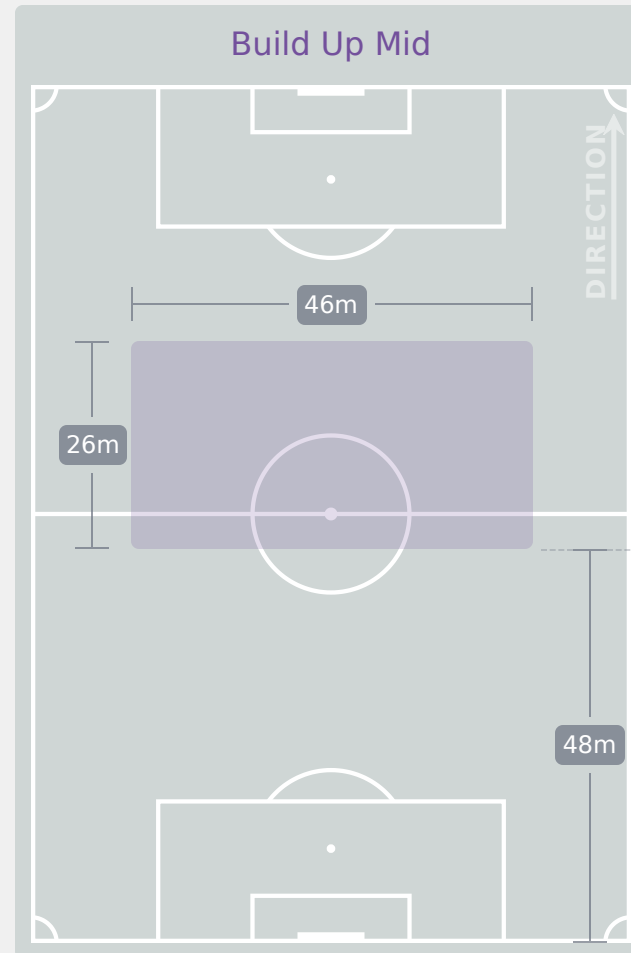
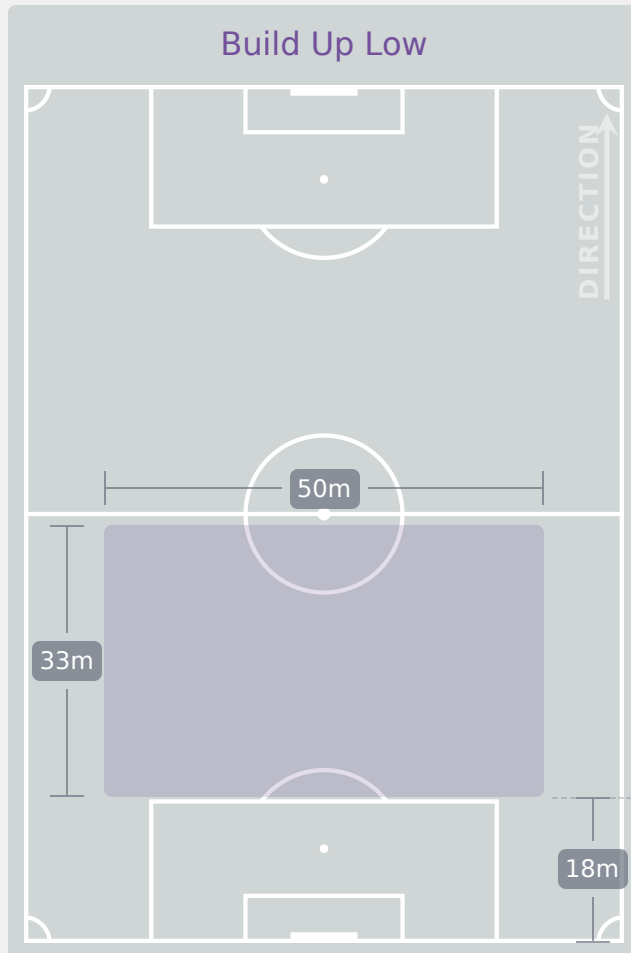
FIFA
U-17 WOMEN'S
WORLD CUP
DOMINICAN REPUBLIC 2024



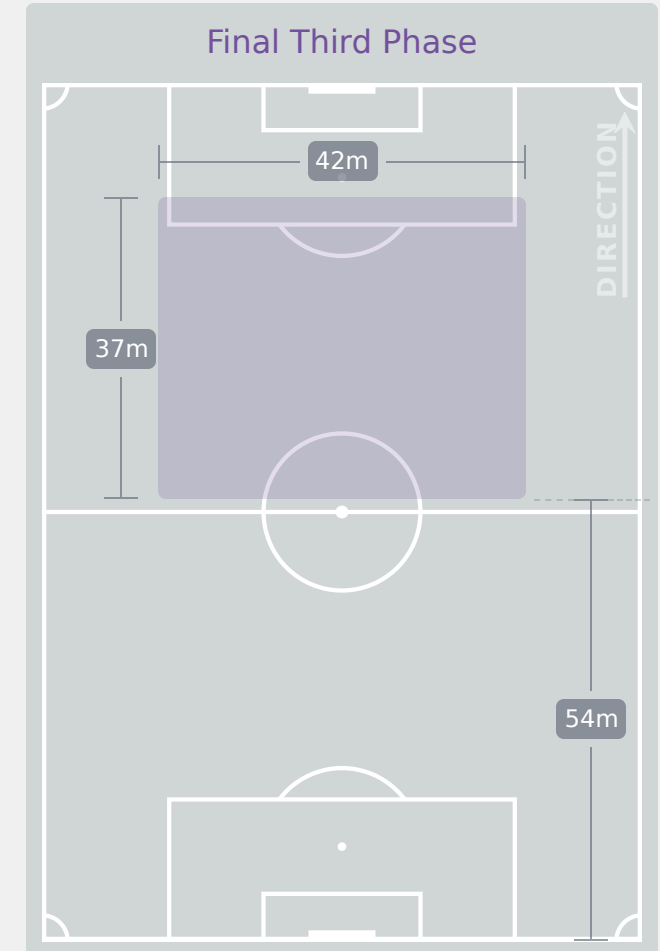
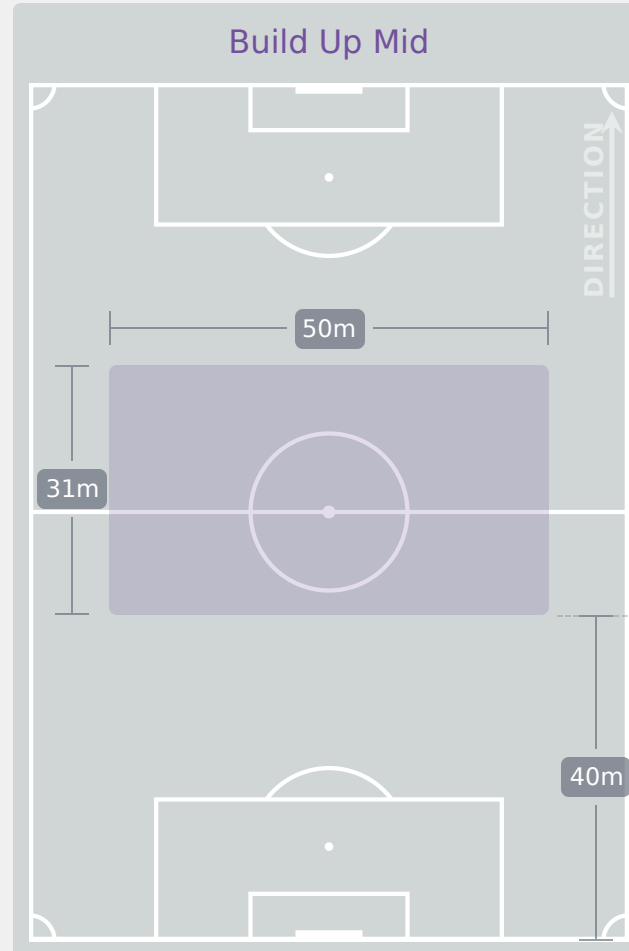
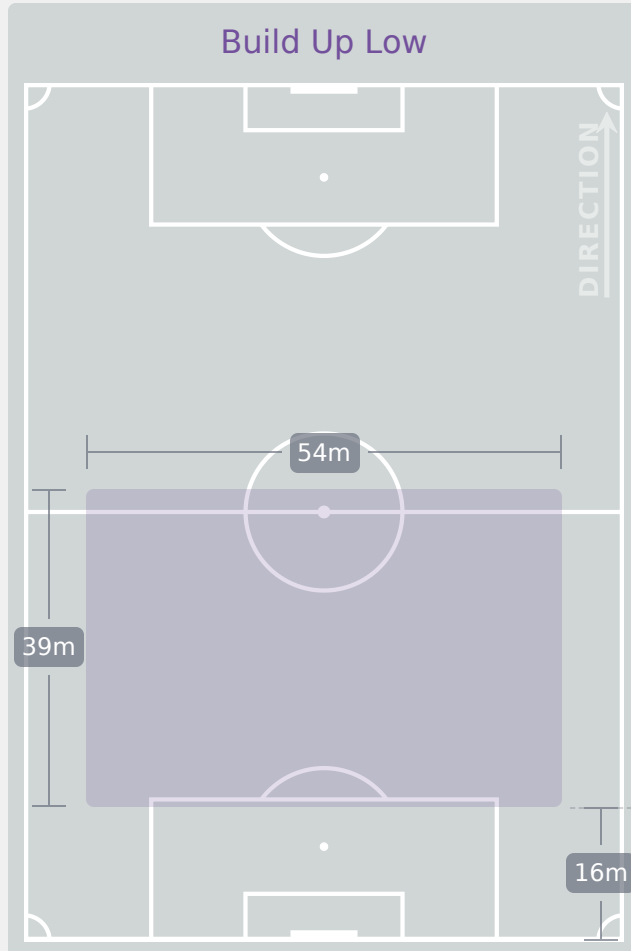
IN POSSESSION

England 4 - 2 Mexico

In Possession Line Height & Team Length



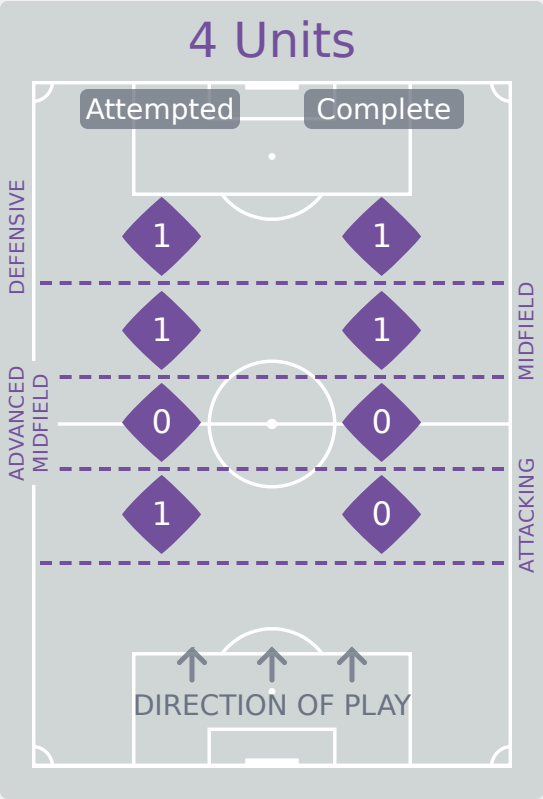
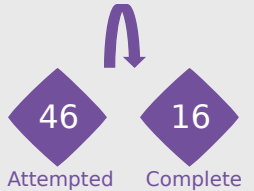
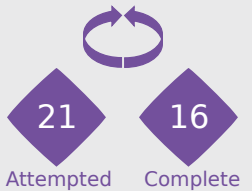
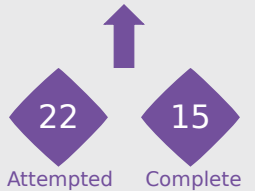
In Possession Line Height & Team Length



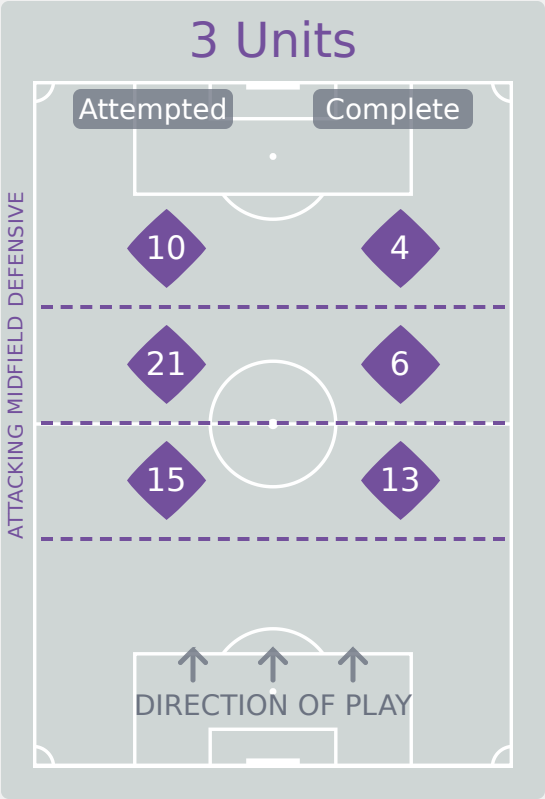
Line Breaks



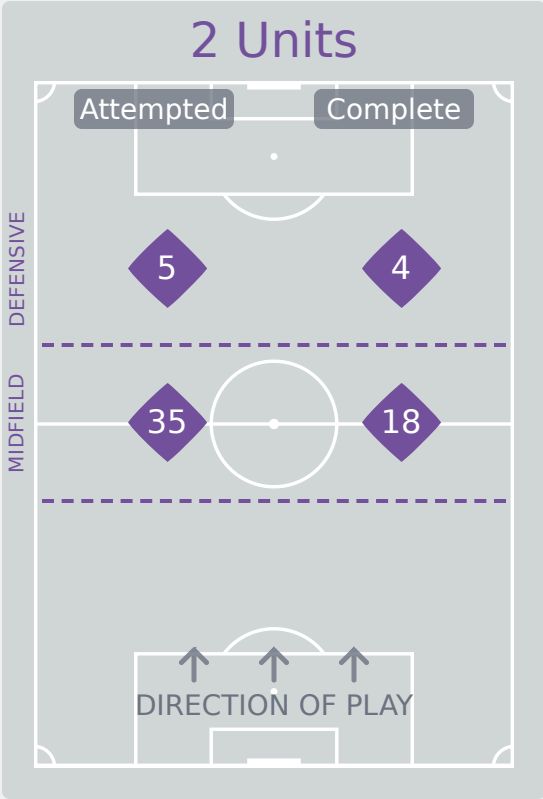
Attempted Line Breaks
89



Attempted Line Breaks 3
Inside Shape 1
Outside Shape 2



Attempted Line Breaks 46
Inside Shape 35
Outside Shape 11

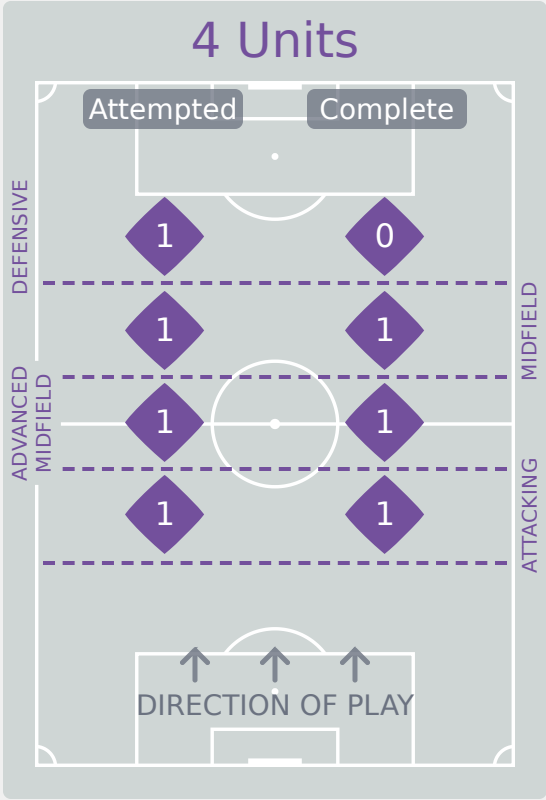
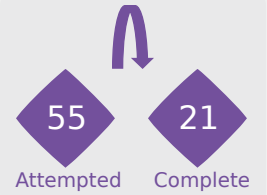
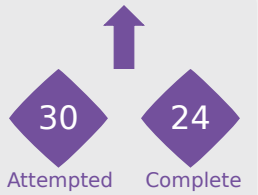


Attempted Line Breaks 40
Inside Shape 28
Outside Shape 12

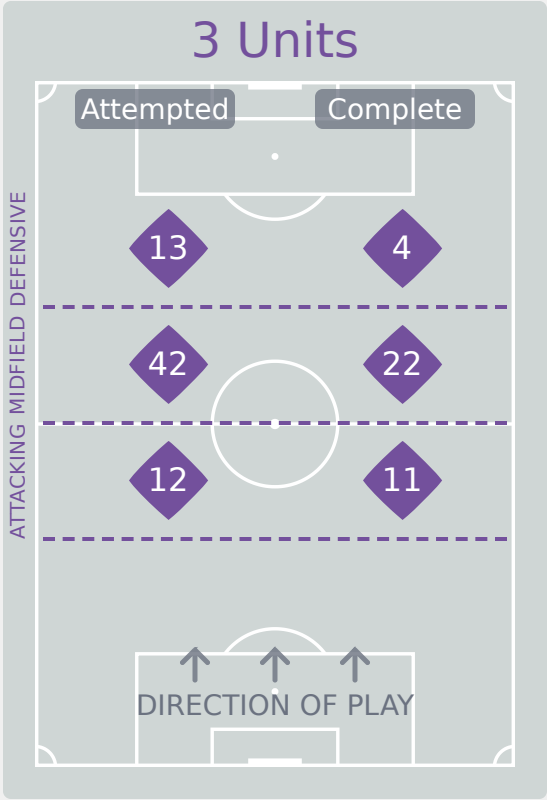
Line Breaks



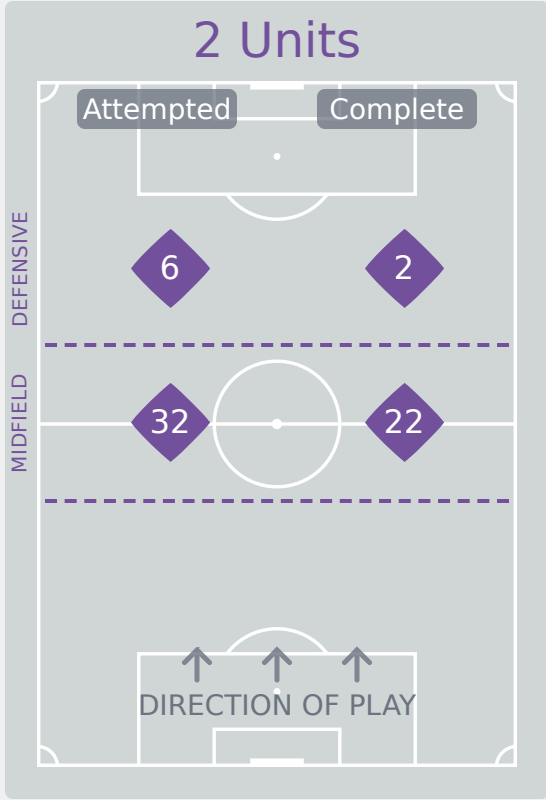
Attempted Line Breaks
109



| | |
|-----------------------|---|
| Attempted Line Breaks | 4 |
| Inside Shape | 2 |
| Outside Shape | 2 |



| | |
|-----------------------|----|
| Attempted Line Breaks | 67 |
| Inside Shape | 47 |
| Outside Shape | 20 |



| | |
|-----------------------|----|
| Attempted Line Breaks | 38 |
| Inside Shape | 29 |
| Outside Shape | 9 |

Line Breaks



| | | | | | 4 Units | | | | 3 Units | | | 2 Units | | Direction | | | Distribution Type | | |
|----|------------------------|-----------------------|-----------------------|-------------------------|----------------|-------------------------|---------------|----------------|----------------|---------------|----------------|---------------|----------------|-----------|--------|------|-------------------|-------|------------------|
| # | Player | Line Breaks Attempted | Line Breaks Completed | Line Break Completion % | Attacking Line | Attacking Midfield Line | Midfield Line | Defensive Line | Attacking Line | Midfield Line | Defensive Line | Midfield Line | Defensive Line | Through | Around | Over | Pass | Cross | Ball Progression |
| 21 | SPENCER Eva | 8 | 3 | 38% | 0 | 0 | 0 | 0 | 1 | 2 | 0 | 5 | 0 | 0 | 1 | 7 | 8 | 0 | 0 |
| 2 | LAS Nelly | 4 | 1 | 25% | 0 | 0 | 0 | 0 | 1 | 0 | 0 | 2 | 1 | 1 | 1 | 2 | 4 | 0 | 0 |
| 3 | MALTBY Rachel | 20 | 12 | 60% | 0 | 0 | 0 | 1 | 5 | 4 | 2 | 8 | 0 | 1 | 4 | 15 | 20 | 0 | 0 |
| 4 | HARBERT Laila | 15 | 6 | 40% | 1 | 0 | 0 | 0 | 0 | 4 | 1 | 8 | 1 | 2 | 8 | 5 | 15 | 0 | 0 |
| 5 | SHAW Zara | 13 | 7 | 54% | 0 | 0 | 0 | 0 | 5 | 1 | 2 | 5 | 0 | 3 | 1 | 9 | 13 | 0 | 0 |
| 6 | WELLESLEY-SMITH Cecily | 10 | 5 | 50% | 0 | 0 | 0 | 0 | 1 | 4 | 2 | 2 | 1 | 4 | 2 | 4 | 9 | 0 | 1 |
| 7 | PARKINSON Erica | 3 | 2 | 67% | 0 | 0 | 0 | 0 | 1 | 1 | 0 | 1 | 0 | 1 | 2 | 0 | 2 | 0 | 1 |
| 8 | JUNAID Omotara | 3 | 2 | 67% | 0 | 0 | 0 | 0 | 0 | 0 | 1 | 2 | 0 | 2 | 1 | 0 | 2 | 0 | 1 |
| 10 | JONES Vera | 6 | 5 | 83% | 0 | 0 | 0 | 0 | 0 | 3 | 2 | 1 | 0 | 6 | 0 | 0 | 6 | 0 | 0 |
| 11 | BROWN Lola | 0 | 0 | 0% | 0 | 0 | 0 | 0 | 0 | 0 | 0 | 0 | 0 | 0 | 0 | 0 | 0 | 0 | 0 |
| 20 | OBOAVWODUO Jane | 3 | 2 | 67% | 0 | 0 | 0 | 0 | 1 | 1 | 0 | 0 | 1 | 0 | 0 | 3 | 3 | 0 | 0 |
| 9 | JOHNSON Olivia | 0 | 0 | 0% | 0 | 0 | 0 | 0 | 0 | 0 | 0 | 0 | 0 | 0 | 0 | 0 | 0 | 0 | 0 |
| 12 | HARWOOD Sophie | 0 | 0 | 0% | 0 | 0 | 0 | 0 | 0 | 0 | 0 | 0 | 0 | 0 | 0 | 0 | 0 | 0 | 0 |
| 14 | CASSAP Emily | 2 | 1 | 50% | 0 | 0 | 1 | 0 | 0 | 1 | 0 | 0 | 0 | 2 | 0 | 0 | 2 | 0 | 0 |
| 17 | THOMPSON Lauryn | 2 | 1 | 50% | 0 | 0 | 0 | 0 | 0 | 0 | 0 | 1 | 1 | 0 | 1 | 1 | 1 | 0 | 1 |

Line Breaks



| | | | | | 4 Units | | | | 3 Units | | | 2 Units | | Direction | | | Distribution Type | | |
|----|-------------------|-----------------------|-----------------------|-------------------------|----------------|-------------------------|---------------|----------------|----------------|---------------|----------------|---------------|----------------|-----------|--------|------|-------------------|-------|------------------|
| # | Player | Line Breaks Attempted | Line Breaks Completed | Line Break Completion % | Attacking Line | Attacking Midfield Line | Midfield Line | Defensive Line | Attacking Line | Midfield Line | Defensive Line | Midfield Line | Defensive Line | Through | Around | Over | Pass | Cross | Ball Progression |
| 1 | VAZQUEZ Camila | 11 | 6 | 55% | 0 | 1 | 0 | 0 | 2 | 7 | 1 | 0 | 0 | 1 | 1 | 9 | 11 | 0 | 0 |
| 2 | GONZALEZ Adrianna | 15 | 6 | 40% | 0 | 0 | 0 | 0 | 4 | 4 | 1 | 5 | 1 | 3 | 3 | 9 | 15 | 0 | 0 |
| 4 | DE LEON Nicol | 16 | 12 | 75% | 1 | 0 | 0 | 0 | 2 | 3 | 1 | 9 | 0 | 6 | 4 | 6 | 16 | 0 | 0 |
| 8 | SOTO Alexa | 4 | 2 | 50% | 0 | 0 | 0 | 0 | 1 | 3 | 0 | 0 | 0 | 1 | 2 | 1 | 4 | 0 | 0 |
| 10 | FRAGOSO Abril | 19 | 11 | 58% | 0 | 0 | 0 | 1 | 1 | 5 | 2 | 8 | 2 | 7 | 1 | 11 | 18 | 1 | 0 |
| 11 | MIYAZATO Anaiya | 4 | 1 | 25% | 0 | 0 | 0 | 0 | 0 | 1 | 2 | 1 | 0 | 1 | 1 | 2 | 4 | 0 | 0 |
| 13 | IBARRA Berenice | 8 | 4 | 50% | 0 | 0 | 0 | 0 | 1 | 3 | 2 | 2 | 0 | 1 | 1 | 6 | 7 | 1 | 0 |
| 16 | SALAS Ana | 3 | 2 | 67% | 0 | 0 | 1 | 0 | 0 | 2 | 0 | 0 | 0 | 1 | 1 | 1 | 3 | 0 | 0 |
| 17 | VAZQUEZ Naomy | 1 | 0 | 0% | 0 | 0 | 0 | 0 | 0 | 0 | 1 | 0 | 0 | 1 | 0 | 0 | 1 | 0 | 0 |
| 18 | MARTINEZ Alexa | 6 | 6 | 100% | 0 | 0 | 0 | 0 | 0 | 5 | 0 | 1 | 0 | 2 | 3 | 1 | 6 | 0 | 0 |
| 20 | REYES Citlalli | 2 | 1 | 50% | 0 | 0 | 0 | 0 | 0 | 1 | 0 | 1 | 0 | 2 | 0 | 0 | 2 | 0 | 0 |
| 5 | VILLALPANDO Mia | 5 | 5 | 100% | 0 | 0 | 0 | 0 | 1 | 1 | 0 | 3 | 0 | 0 | 4 | 1 | 5 | 0 | 0 |
| 6 | MONTES Monique | 6 | 5 | 83% | 0 | 0 | 0 | 0 | 0 | 4 | 0 | 2 | 0 | 2 | 1 | 3 | 6 | 0 | 0 |
| 7 | TORRES Ana | 1 | 0 | 0% | 0 | 0 | 0 | 0 | 0 | 0 | 1 | 0 | 0 | 0 | 0 | 1 | 1 | 0 | 0 |
| 9 | CONTRERAS Evelyn | 0 | 0 | 0% | 0 | 0 | 0 | 0 | 0 | 0 | 0 | 0 | 0 | 0 | 0 | 0 | 0 | 0 | 0 |
| 19 | NUNEZ Sofia | 8 | 3 | 38% | 0 | 0 | 0 | 0 | 0 | 3 | 2 | 0 | 3 | 2 | 2 | 4 | 5 | 1 | 2 |

Passing Networks



| # | Passes From ↓ to → | SPENCER Eva | LAS Nelly | MALTBY Rachel | HARBERT Laila | SHAW Zara | WELLESLEY-SMITH Cecily | PARKINSON Erica | JUNAID Omotara | JONES Vera | BROWN Lola | OBOAVWODUO Jane | JOHNSON Olivia | HARWOOD Sophie | CASSAP Emily | THOMPSON Lauryn |
|----|------------------------|-------------|-----------|---------------|---------------|-----------|------------------------|-----------------|----------------|------------|------------|-----------------|----------------|----------------|--------------|-----------------|
| 21 | SPENCER Eva | | 1 | 1 | 1 | 7 | 6 | 1 | 0 | 0 | 0 | 1 | 0 | 0 | 0 | 0 |
| 2 | LAS Nelly | 0 | | 0 | 0 | 1 | 0 | 0 | 0 | 2 | 0 | 0 | 0 | 0 | 0 | 0 |
| 3 | MALTBY Rachel | 1 | 0 | | 3 | 0 | 0 | 0 | 1 | 2 | 1 | 0 | 0 | 0 | 0 | 1 |
| 4 | HARBERT Laila | 1 | 0 | 2 | | 4 | 3 | 0 | 1 | 2 | 1 | 1 | 1 | 0 | 0 | 2 |
| 5 | SHAW Zara | 4 | 3 | 0 | 2 | | 7 | 2 | 3 | 2 | 1 | 1 | 0 | 0 | 0 | 1 |
| 6 | WELLESLEY-SMITH Cecily | 3 | 0 | 0 | 2 | 8 | | 0 | 1 | 3 | 4 | 1 | 0 | 0 | 0 | 0 |
| 7 | PARKINSON Erica | 0 | 1 | 0 | 1 | 3 | 0 | | 0 | 2 | 0 | 0 | 0 | 0 | 0 | 0 |
| 8 | JUNAID Omotara | 0 | 1 | 1 | 1 | 3 | 0 | 1 | | 0 | 0 | 0 | 0 | 0 | 0 | 0 |
| 10 | JONES Vera | 0 | 0 | 1 | 4 | 1 | 0 | 1 | 1 | | 0 | 3 | 0 | 0 | 0 | 1 |
| 11 | BROWN Lola | 0 | 0 | 1 | 0 | 0 | 1 | 0 | 0 | 1 | | 2 | 0 | 0 | 0 | 0 |
| 20 | OBOAVWODUO Jane | 0 | 0 | 2 | 1 | 0 | 1 | 0 | 1 | 0 | 1 | | 0 | 0 | 0 | 1 |
| 9 | JOHNSON Olivia | 0 | 1 | 0 | 0 | 0 | 0 | 0 | 0 | 0 | 0 | 0 | | 0 | 0 | 0 |
| 12 | HARWOOD Sophie | 0 | 0 | 0 | 1 | 0 | 0 | 0 | 0 | 0 | 0 | 0 | 0 | | 0 | 0 |
| 14 | CASSAP Emily | 0 | 0 | 0 | 1 | 0 | 0 | 0 | 0 | 0 | 0 | 0 | 1 | 0 | | 0 |
| 17 | THOMPSON Lauryn | 0 | 0 | 0 | 0 | 1 | 0 | 0 | 0 | 0 | 0 | 1 | 0 | 0 | 0 | |

| Top 5 Player to Player Passers | | |
|--------------------------------|------------------------|------------------------|
| Player | Passed To | % of Total Team Passes |
| WELLESLEY-SMITH Cecily | SHAW Zara | 5.7% |
| SPENCER Eva | SHAW Zara | 5% |
| SHAW Zara | WELLESLEY-SMITH Cecily | 5% |
| SPENCER Eva | WELLESLEY-SMITH Cecily | 4.3% |
| HARBERT Laila | SHAW Zara | 2.9% |

Passing Networks



| # | Passes From ↓ to → | VAZQUEZ Camila | GONZALEZ Adrianna | DE LEON Nicol | SOTO Alexa | FRAGOSO Abril | MIYAZATO Anaiya | IBARRA Berenice | SALAS Ana | VAZQUEZ Naomy | MARTINEZ Alexa | REYES Citlalli | VILLALPANDO Mia | MONTES Monique | TORRES Ana | CONTRERAS Evelyn | NUNEZ Sofia |
|----|--------------------|----------------|-------------------|---------------|------------|---------------|-----------------|-----------------|-----------|---------------|----------------|----------------|-----------------|----------------|------------|------------------|-------------|
| 1 | VAZQUEZ Camila | | 9 | 12 | 1 | 2 | 0 | 1 | 1 | 1 | 0 | 1 | 0 | 0 | 0 | 1 | 0 |
| 2 | GONZALEZ Adrianna | 10 | | 2 | 0 | 2 | 1 | 1 | 0 | 0 | 3 | 2 | 1 | 1 | 0 | 0 | 1 |
| 4 | DE LEON Nicol | 10 | 5 | | 2 | 3 | 4 | 3 | 0 | 0 | 0 | 1 | 4 | 1 | 0 | 0 | 2 |
| 8 | SOTO Alexa | 1 | 0 | 0 | | 3 | 1 | 3 | 1 | 2 | 1 | 0 | 0 | 3 | 0 | 0 | 0 |
| 10 | FRAGOSO Abril | 0 | 2 | 1 | 2 | | 3 | 2 | 3 | 2 | 2 | 1 | 0 | 4 | 0 | 1 | 3 |
| 11 | MIYAZATO Anaiya | 0 | 1 | 0 | 1 | 1 | | 5 | 0 | 1 | 0 | 1 | 0 | 0 | 0 | 0 | 1 |
| 13 | IBARRA Berenice | 3 | 0 | 4 | 1 | 4 | 0 | | 1 | 1 | 0 | 1 | 0 | 4 | 1 | 0 | 1 |
| 16 | SALAS Ana | 1 | 1 | 1 | 1 | 2 | 1 | 2 | | 0 | 0 | 0 | 0 | 0 | 0 | 0 | 0 |
| 17 | VAZQUEZ Naomy | 0 | 0 | 0 | 0 | 0 | 0 | 1 | 0 | | 0 | 0 | 0 | 0 | 0 | 0 | 0 |
| 18 | MARTINEZ Alexa | 0 | 0 | 0 | 0 | 2 | 0 | 0 | 1 | 1 | | 5 | 0 | 0 | 0 | 1 | 0 |
| 20 | REYES Citlalli | 1 | 2 | 0 | 0 | 1 | 0 | 0 | 0 | 0 | 4 | | 0 | 0 | 0 | 0 | 0 |
| 5 | VILLALPANDO Mia | 0 | 2 | 4 | 0 | 1 | 0 | 0 | 0 | 0 | 0 | 0 | | 0 | 2 | 1 | 0 |
| 6 | MONTES Monique | 0 | 1 | 2 | 0 | 3 | 3 | 1 | 0 | 1 | 2 | 1 | 2 | | 0 | 2 | 2 |
| 7 | TORRES Ana | 0 | 0 | 0 | 0 | 1 | 0 | 0 | 0 | 0 | 0 | 0 | 1 | 1 | | 0 | 0 |
| 9 | CONTRERAS Evelyn | 0 | 0 | 0 | 0 | 0 | 0 | 0 | 0 | 0 | 0 | 0 | 0 | 0 | 1 | | 0 |
| 19 | NUNEZ Sofia | 0 | 0 | 0 | 0 | 2 | 1 | 0 | 0 | 0 | 0 | 0 | 2 | 0 | 0 | 1 | |

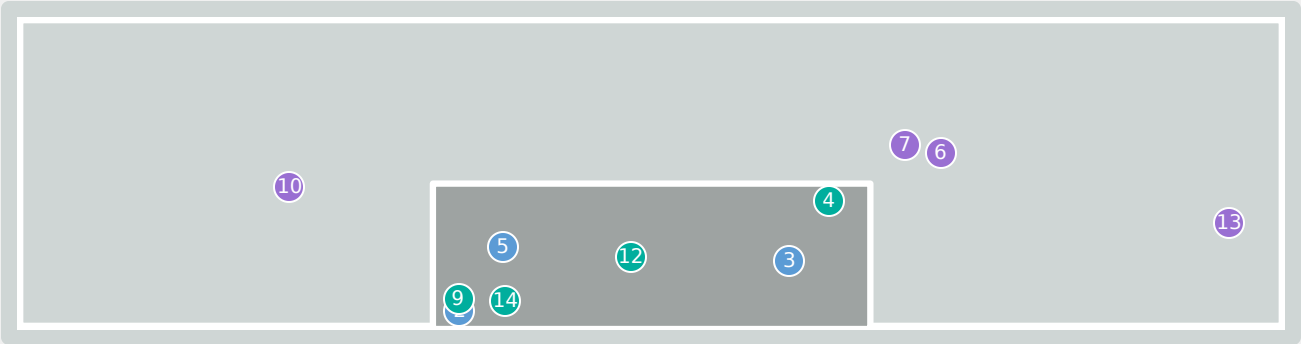
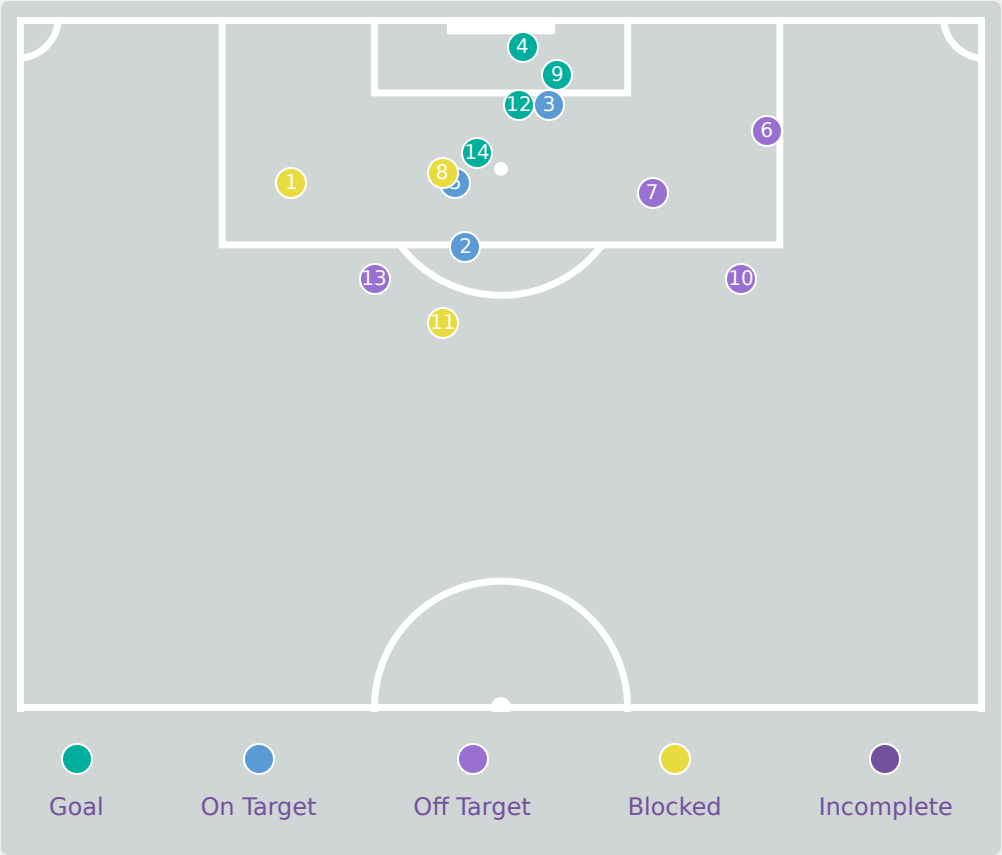
| Top 5 Player to Player Passers | | |
|--------------------------------|----------------|------------------------|
| Player | Passed To | % of Total Team Passes |
| VAZQUEZ Camila | DE LEON Nicol | 5.2% |
| GONZALEZ Adrianna | VAZQUEZ Camila | 4.4% |

| | | |
|---------------|----------------|------|
| DE LEON Nicol | VAZQUEZ Camila | 4.4% |
|---------------|----------------|------|

| | | |
|----------------|-------------------|------|
| VAZQUEZ Camila | GONZALEZ Adrianna | 3.9% |
|----------------|-------------------|------|

| | | |
|---------------|-------------------|------|
| DE LEON Nicol | GONZALEZ Adrianna | 2.2% |
|---------------|-------------------|------|

Attempts at Goal



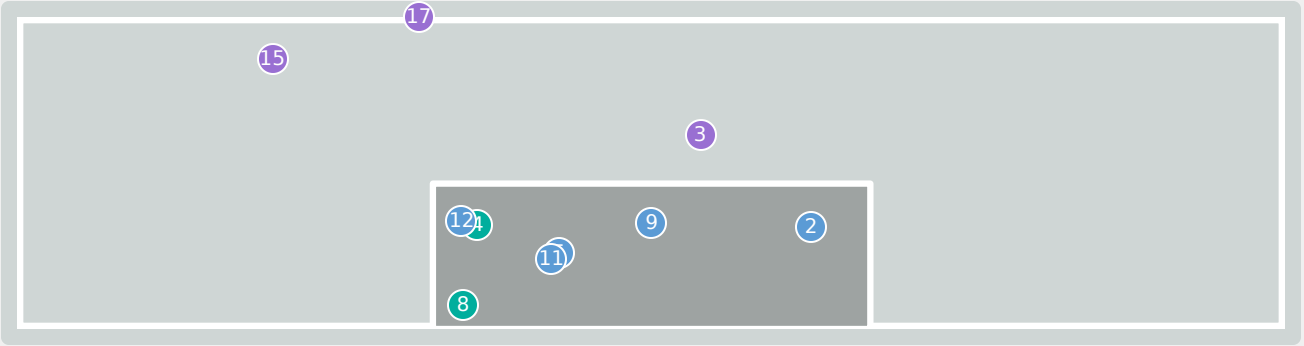
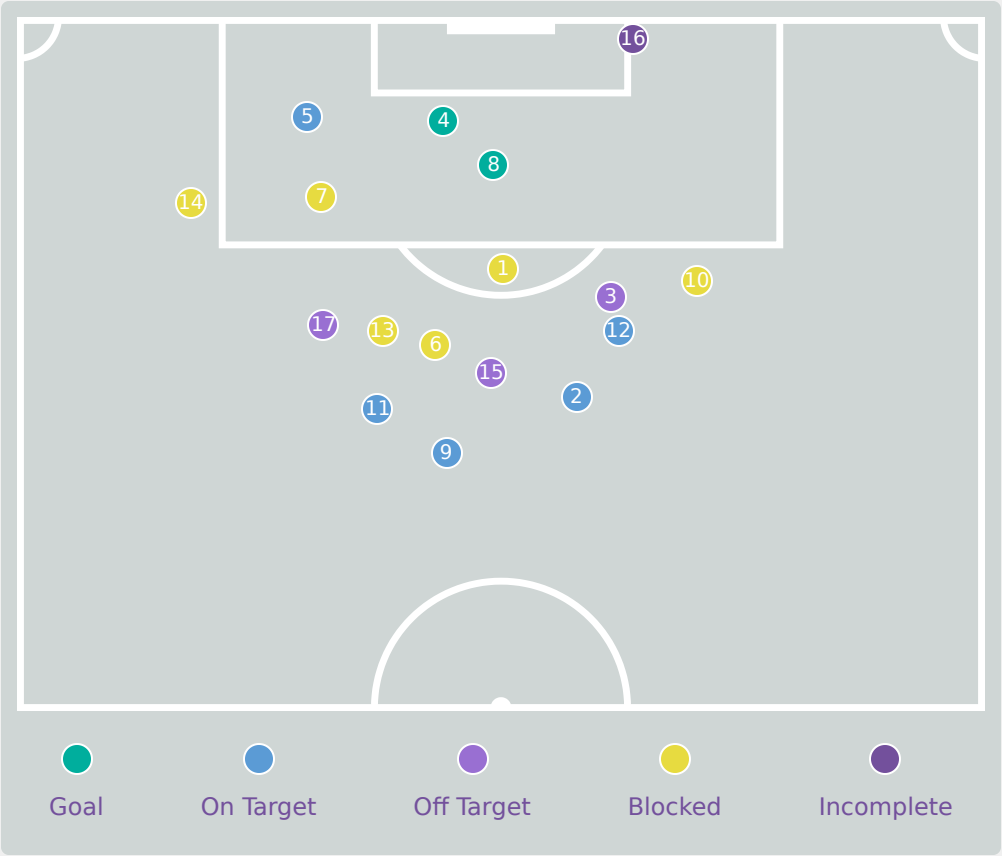
| Key | Outcome | Shots |
|-----|------------|-------|
| ● | Goals | 4 |
| ● | On Target | 3 |
| ● | Off Target | 4 |
| ● | Blocked | 3 |
| ● | Incomplete | 0 |

Attempts at Goal



| Time | Player | Outcome | Body Part | Delivery Type |
|------|--------------------------|----------------------------------------|------------|------------------|
| 3 | 20OBOAVWODUO Jane | Incomplete - Blocked | Right Foot | Pass |
| 10 | 6 WELLESLEY-SMITH Cecily | On Target - Saved | Left Foot | Ball Progression |
| 10 | 10 JONES Vera | Deflected On Target - Saved | Head | Corner |
| 10 | 5 SHAW Zara | On Target - Goal | Right Foot | Other |
| 21 | 11 BROWN Lola | On Target - Saved | Left Foot | Loose Ball |
| 28 | 20OBOAVWODUO Jane | Off Target | Right Foot | Ball Progression |
| 35 | 20OBOAVWODUO Jane | Off Target | Right Foot | Pass |
| 47 | 7 PARKINSON Erica | Incomplete - Blocked | Left Foot | Cross |
| 60 | 2 LAS Nelly | On Target - Goal | Right Foot | Cross |
| 80 | 20OBOAVWODUO Jane | Off Target | Left Foot | Other |
| 84 | 17 THOMPSON Lauryn | Incomplete - Blocked | Right Foot | Pass |
| 87 | 3 MALTBY Rachel | Deflected On Target - Goal | Right Foot | Cross |
| 98 | 17 THOMPSON Lauryn | Deflected Off Target - Defensive Event | Right Foot | Ball Progression |
| 100 | 9 JOHNSON Olivia | On Target - Goal | Left Foot | Loose Ball |

Attempts at Goal



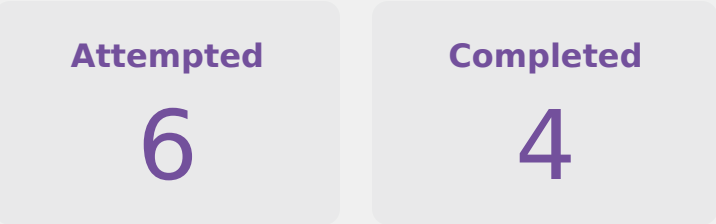
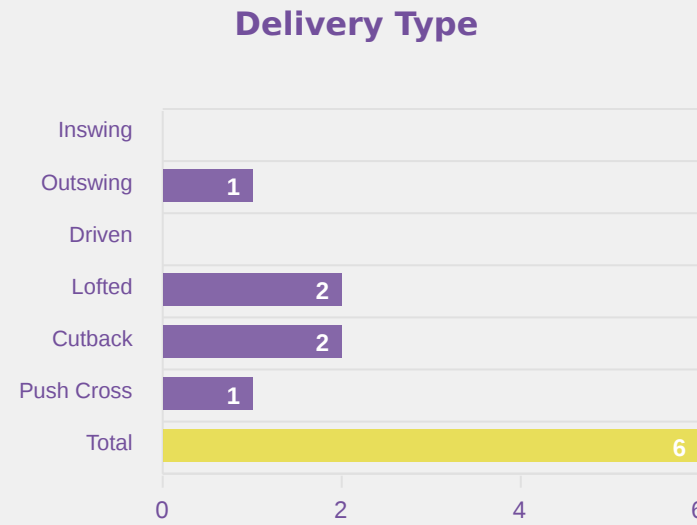
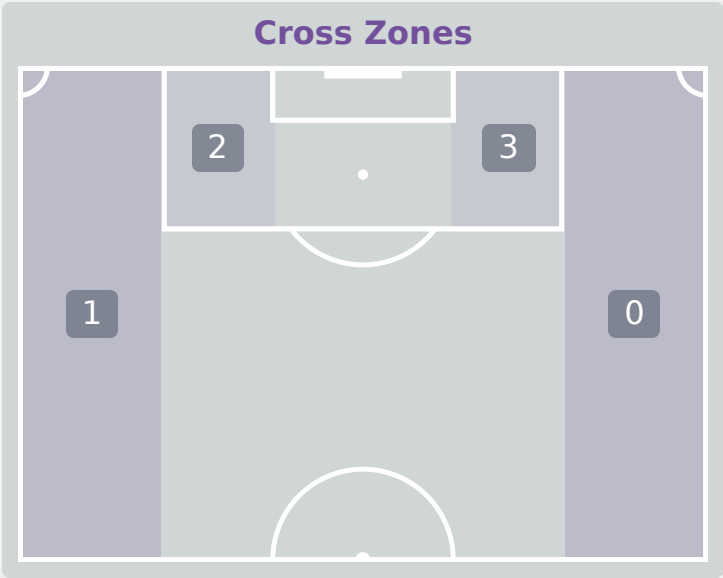
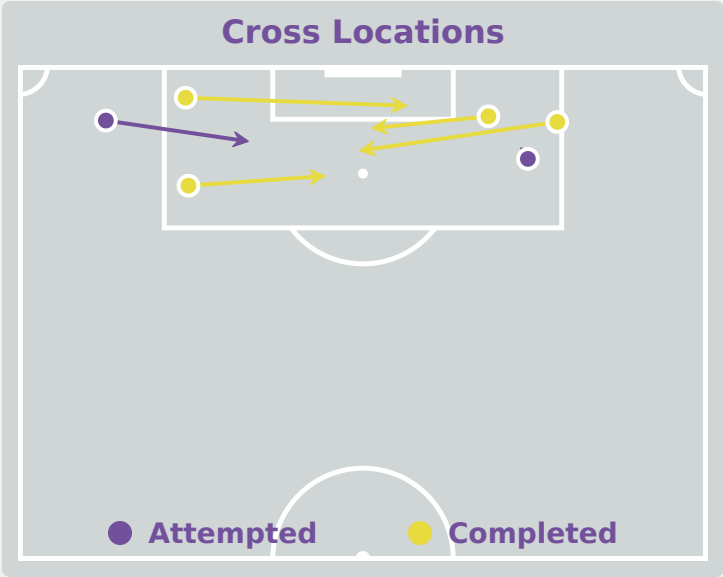
| Key | Outcome | Shots |
|-----|------------|-------|
| ● | Goals | 2 |
| ● | On Target | 5 |
| ● | Off Target | 3 |
| ● | Blocked | 6 |
| ● | Incomplete | 1 |

Attempts at Goal



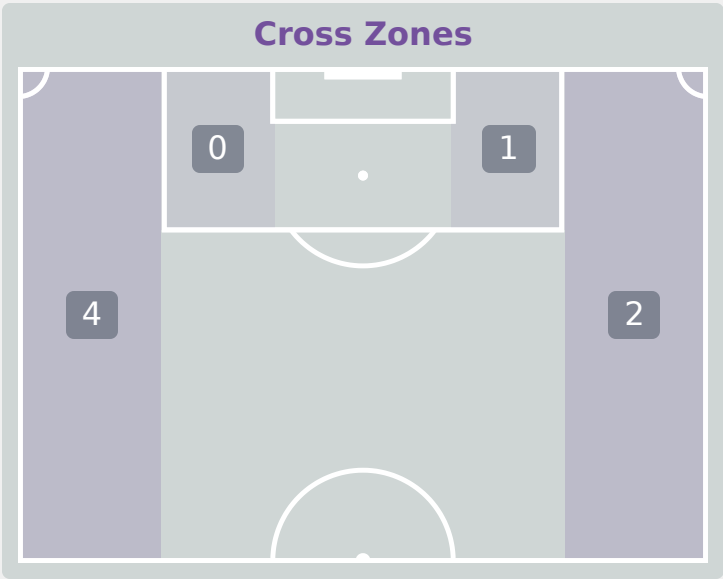
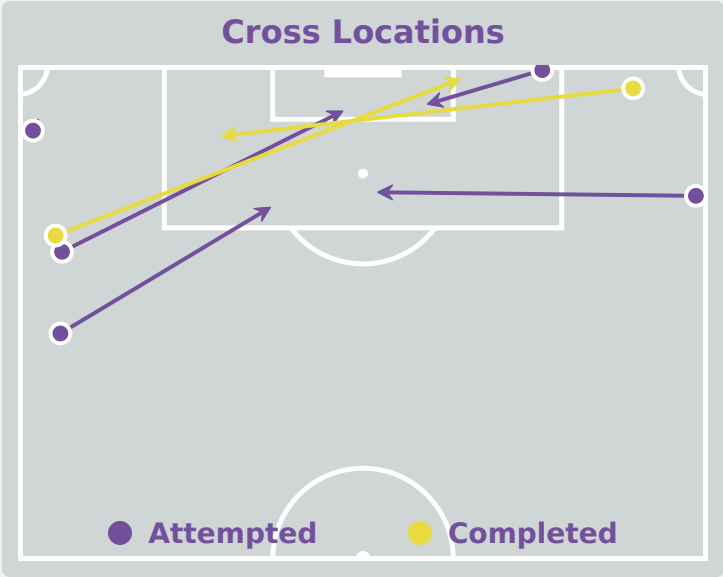
| Time | Player | Outcome | Body Part | Delivery Type |
|------|--------------------|-----------------------------------|------------|---------------|
| 5 | 11 MIYAZATO Anaiya | Incomplete - Blocked | Right Foot | Loose Ball |
| 6 | 10 FRAGOSO Abril | On Target - Saved | Right Foot | Freekick |
| 13 | 8 SOTO Alexa | Off Target | Right Foot | Loose Ball |
| 16 | 16 SALAS Ana | On Target - Goal | Head | Freekick |
| 27 | 11 MIYAZATO Anaiya | On Target - Saved | Left Foot | Cross |
| 39 | 6 MONTES Monique | Incomplete - Blocked | Left Foot | Pass |
| 46 | 17 VAZQUEZ Naomy | Incomplete - Blocked | Right Foot | Loose Ball |
| 49 | 8 SOTO Alexa | On Target - Goal | Right Foot | Penalty |
| 52 | 13 IBARRA Berenice | On Target - Saved | Left Foot | Freekick |
| 57 | 10 FRAGOSO Abril | Incomplete - Blocked | Right Foot | Freekick |
| 58 | 13 IBARRA Berenice | On Target - Saved | Left Foot | Loose Ball |
| 62 | 9 CONTRERAS Evelyn | On Target - Saved | Left Foot | Other |
| 70 | 19 NUNEZ Sofia | Incomplete - Blocked | Left Foot | Loose Ball |
| 72 | 7 TORRES Ana | Incomplete - Blocked | Right Foot | Other |
| 78 | 6 MONTES Monique | Off Target | Left Foot | Pass |
| 81 | 7 TORRES Ana | Incomplete - Player On Ball Error | Right Foot | Cross |
| 95 | 19 NUNEZ Sofia | Off Target | Left Foot | Freekick |

Crosses (Open Play)

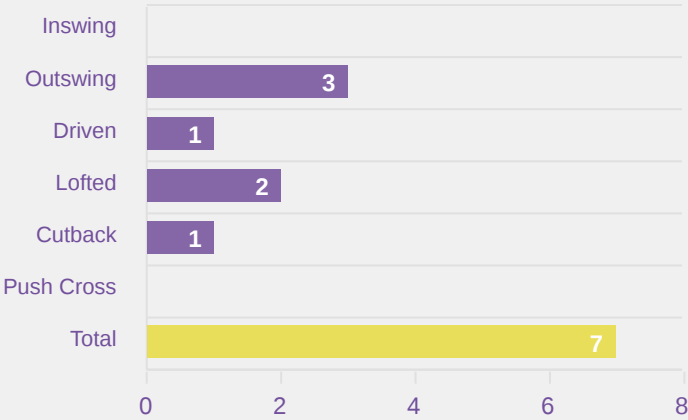


| # | Player | Inswing | Outswing | Driven | Lofted | Cutback | Push Cross | Total Attempted |
|----|------------------------|---------|----------|--------|--------|---------|------------|-----------------|
| 21 | SPENCER Eva | 0 | 0 | 0 | 0 | 0 | 0 | 0 |
| 2 | LAS Nelly | 0 | 0 | 0 | 0 | 2 | 0 | 2 |
| 3 | MALTBY Rachel | 0 | 0 | 0 | 0 | 0 | 0 | 0 |
| 4 | HARBERT Laila | 0 | 0 | 0 | 0 | 0 | 0 | 0 |
| 5 | SHAW Zara | 0 | 0 | 0 | 0 | 0 | 0 | 0 |
| 6 | WELLESLEY-SMITH Cecily | 0 | 0 | 0 | 0 | 0 | 0 | 0 |
| 7 | PARKINSON Erica | 0 | 0 | 0 | 0 | 0 | 0 | 0 |
| 8 | JUNAID Omotara | 0 | 1 | 0 | 0 | 0 | 0 | 1 |
| 10 | JONES Vera | 0 | 0 | 0 | 0 | 0 | 0 | 0 |
| 11 | BROWN Lola | 0 | 0 | 0 | 0 | 0 | 1 | 1 |
| 20 | OBOAVWODUO Jane | 0 | 0 | 0 | 1 | 0 | 0 | 1 |
| 9 | JOHNSON Olivia | 0 | 0 | 0 | 0 | 0 | 0 | 0 |
| 12 | HARWOOD Sophie | 0 | 0 | 0 | 0 | 0 | 0 | 0 |
| 14 | CASSAP Emily | 0 | 0 | 0 | 0 | 0 | 0 | 0 |
| 17 | THOMPSON Lauryn | 0 | 0 | 0 | 1 | 0 | 0 | 1 |

Crosses (Open Play)



Delivery Type



Attempted

7

Completed

2

Most Crosses Attempted

2

REYES Citlalli
ATTACKING MIDFIELD RIGHT

| # | Player | Inswing | Outswing | Driven | Lofted | Cutback | Push Cross | Total Attempted |
|----|-------------------|---------|----------|--------|--------|---------|------------|-----------------|
| 1 | VAZQUEZ Camila | 0 | 0 | 0 | 0 | 0 | 0 | 0 |
| 2 | GONZALEZ Adrianna | 0 | 0 | 0 | 0 | 0 | 0 | 0 |
| 4 | DE LEON Nicol | 0 | 0 | 0 | 0 | 0 | 0 | 0 |
| 8 | SOTO Alexa | 0 | 0 | 0 | 0 | 0 | 0 | 0 |
| 10 | FRAGOSO Abril | 0 | 0 | 0 | 0 | 0 | 0 | 0 |
| 11 | MIYAZATO Anaiya | 0 | 0 | 0 | 0 | 1 | 0 | 1 |
| 13 | IBARRA Berenice | 0 | 1 | 0 | 0 | 0 | 0 | 1 |
| 16 | SALAS Ana | 0 | 0 | 0 | 0 | 0 | 0 | 0 |
| 17 | VAZQUEZ Naomi | 0 | 0 | 0 | 0 | 0 | 0 | 0 |
| 18 | MARTINEZ Alexa | 0 | 0 | 1 | 0 | 0 | 0 | 1 |
| 20 | REYES Citlalli | 0 | 1 | 0 | 1 | 0 | 0 | 2 |
| 5 | VILLALPANDO Mia | 0 | 0 | 0 | 1 | 0 | 0 | 1 |
| 6 | MONTES Monique | 0 | 0 | 0 | 0 | 0 | 0 | 0 |
| 7 | TORRES Ana | 0 | 0 | 0 | 0 | 0 | 0 | 0 |
| 9 | CONTRERAS Evelyn | 0 | 0 | 0 | 0 | 0 | 0 | 0 |
| 19 | NUNEZ Sofia | 0 | 1 | 0 | 0 | 0 | 0 | 1 |

Offering to Receive



174

Total Offers Made

52

Total Offers Received

Most Offers

42

JONES Vera

ATTACKING MIDFIELD

72

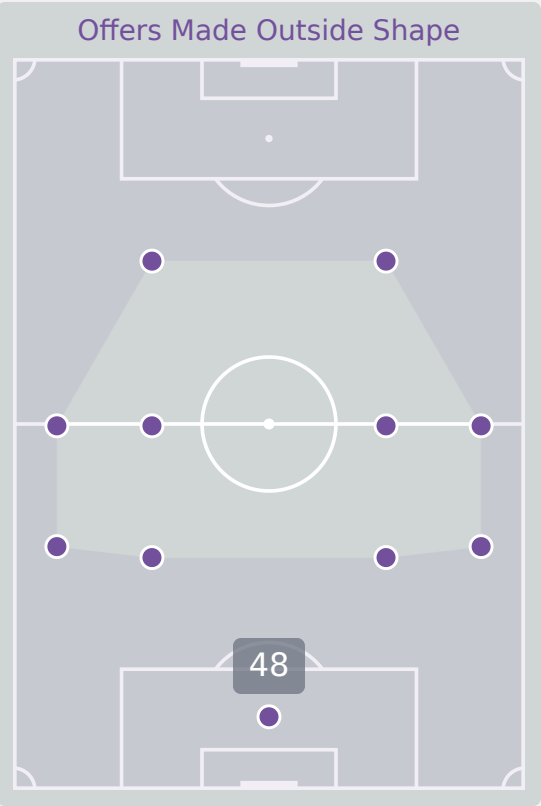
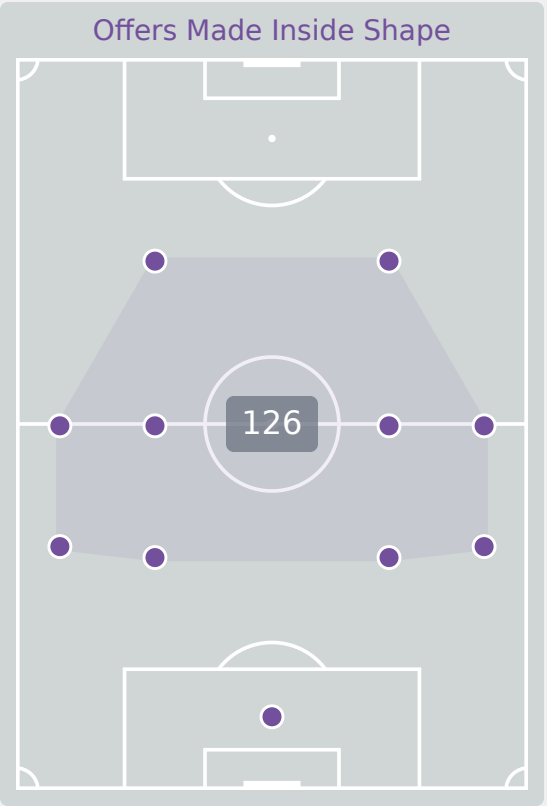
Offers Made in Final Third

81

Offers Made in Middle Third

21

Offers Made in Defensive Third



| # | Player | Offers Made | Offers Received | % Made & Received |
|----|------------------------|-------------|-----------------|-------------------|
| 21 | SPENCER Eva | 4 | 2 | 50% |
| 2 | LAS Nelly | 11 | 5 | 45.5% |
| 3 | MALTBY Rachel | 6 | 2 | 33.3% |
| 4 | HARBERT Laila | 13 | 4 | 30.8% |
| 5 | SHAW Zara | 1 | 1 | 100% |
| 6 | WELLESLEY-SMITH Cecily | 5 | 4 | 80% |
| 7 | PARKINSON Erica | 25 | 4 | 16% |
| 8 | JUNAID Omotara | 9 | 5 | 55.6% |
| 10 | JONES Vera | 42 | 10 | 23.8% |
| 11 | BROWN Lola | 20 | 4 | 20% |
| 20 | OBOAVWODUO Jane | 23 | 9 | 39.1% |
| 9 | JOHNSON Olivia | 2 | 1 | 50% |
| 12 | HARWOOD Sophie | 1 | 0 | 0% |
| 14 | CASSAP Emily | 3 | 0 | 0% |
| 17 | THOMPSON Lauryn | 9 | 1 | 11.1% |

Offering to Receive



217

Total Offers Made

79

Total Offers Received

Most Offers

42

MARTINEZ Alexa

RIGHT BACK

64

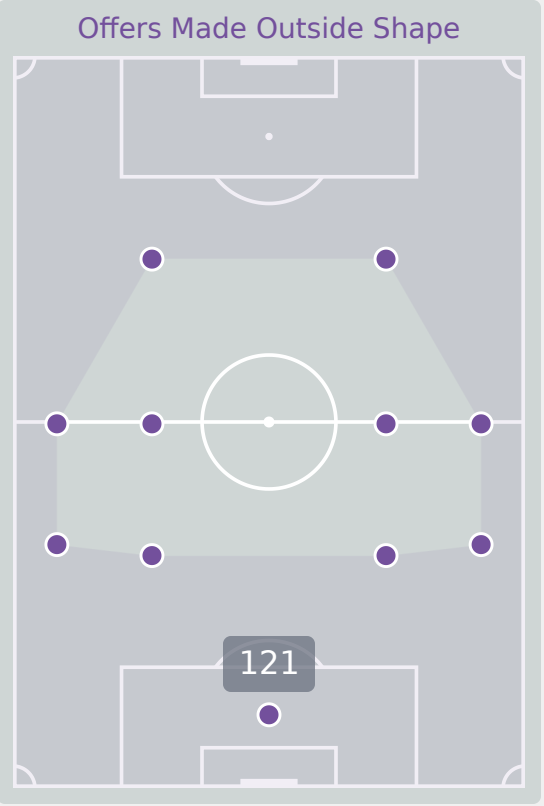
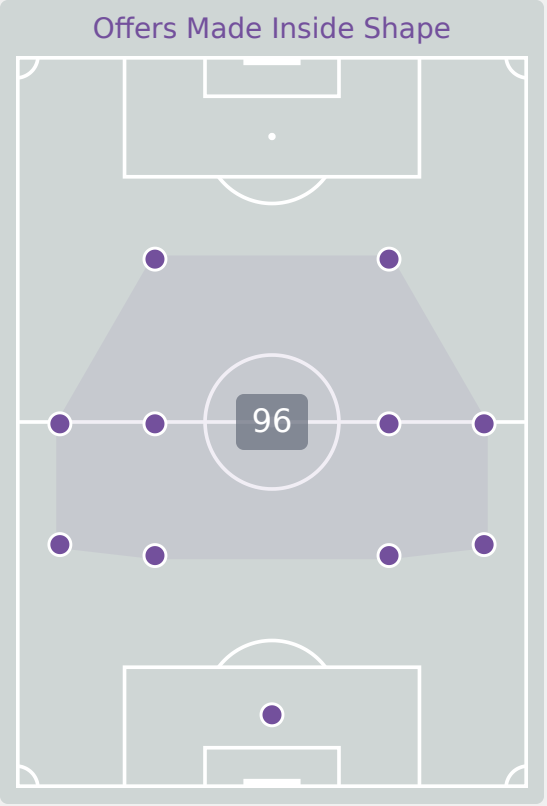
Offers Made in Final Third

108

Offers Made in Middle Third

45

Offers Made in Defensive Third



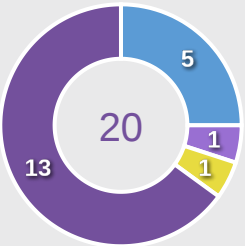
| # | Player | Offers Made | Offers Received | % Made & Received |
|----|-------------------|-------------|-----------------|-------------------|
| 1 | VAZQUEZ Camila | 9 | 5 | 55.6% |
| 2 | GONZALEZ Adrianna | 7 | 2 | 28.6% |
| 4 | DE LEON Nicol | 8 | 6 | 75% |
| 8 | SOTO Alexa | 21 | 7 | 33.3% |
| 10 | FRAGOSO Abril | 19 | 6 | 31.6% |
| 11 | MIYAZATO Anaiya | 9 | 3 | 33.3% |
| 13 | IBARRA Berenice | 24 | 9 | 37.5% |
| 16 | SALAS Ana | 3 | 1 | 33.3% |
| 17 | VAZQUEZ Naomy | 4 | 1 | 25% |
| 18 | MARTINEZ Alexa | 42 | 8 | 19% |
| 20 | REYES Citlalli | 7 | 3 | 42.9% |
| 5 | VILLALPANDO Mia | 13 | 6 | 46.2% |
| 6 | MONTES Monique | 19 | 9 | 47.4% |
| 7 | TORRES Ana | 4 | 1 | 25% |
| 9 | CONTRERAS Evelyn | 10 | 3 | 30% |
| 19 | NUNEZ Sofia | 18 | 9 | 50% |

Movement to Receive

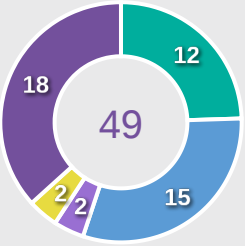


Movement Types by Phase

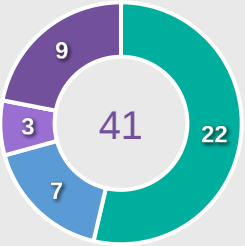
Final Third Phase



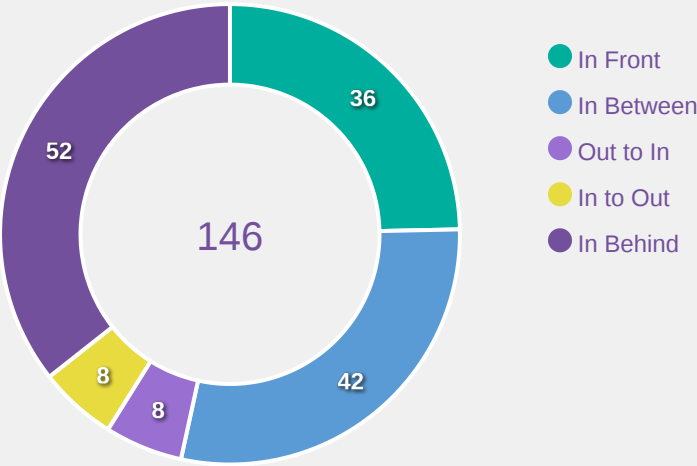
Progression Phase



Build Up Phase



All Movement Types

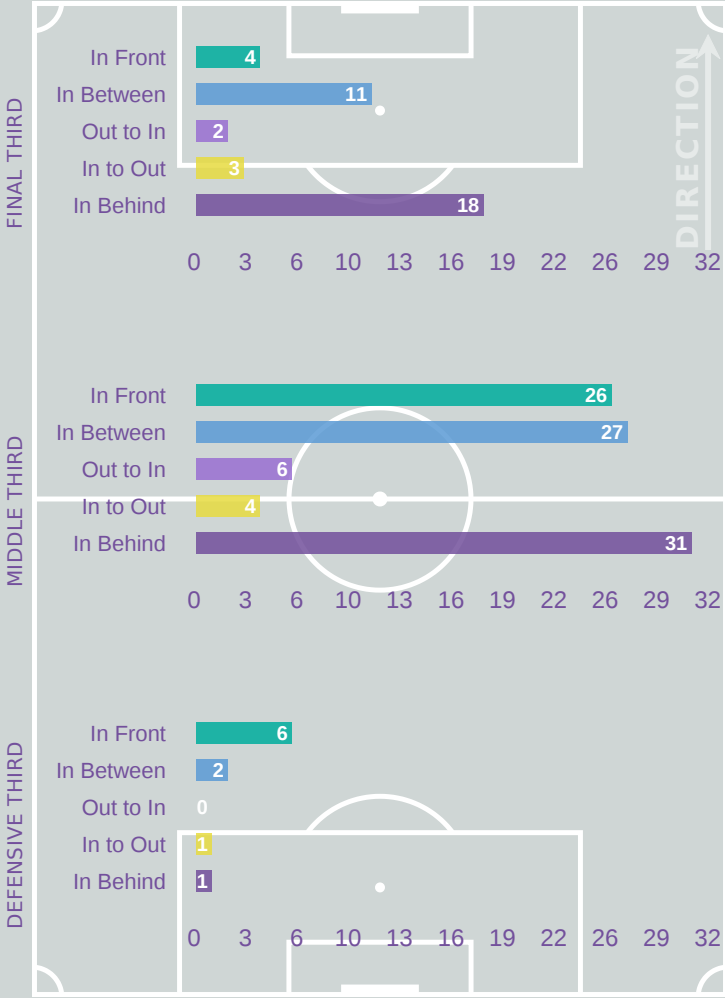


- In Front
- In Between
- Out to In
- In to Out
- In Behind

Top Ranked Players

| Type | Player | Movements |
|------------|--------------------|-----------|
| In Front | 10 JONES Vera | 9 |
| In Between | 10 JONES Vera | 22 |
| Out to In | 7 PARKINSON Erica | 4 |
| In to Out | 7 PARKINSON Erica | 2 |
| In Behind | 20 OBOAVWODUO Jane | 12 |

Movement Types Pitch Third

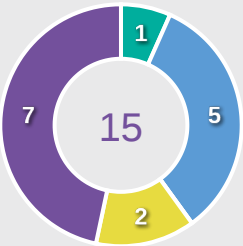


Movement to Receive

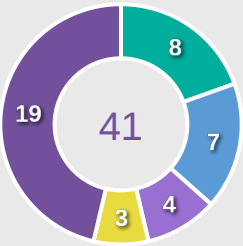


Movement Types by Phase

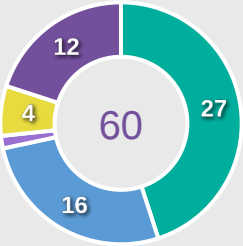
Final Third Phase



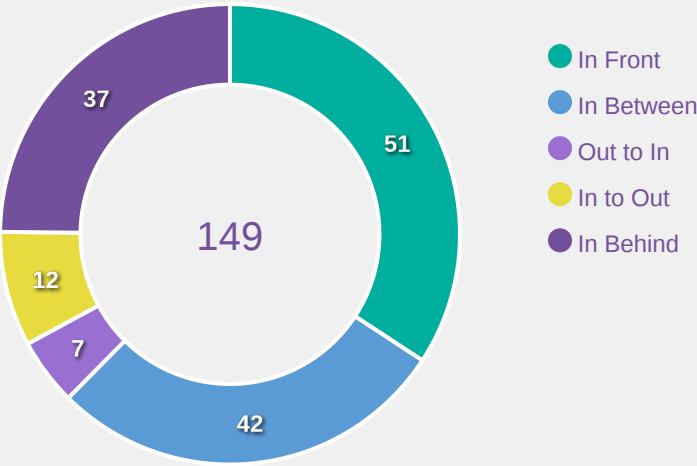
Progression Phase



Build Up Phase



All Movement Types

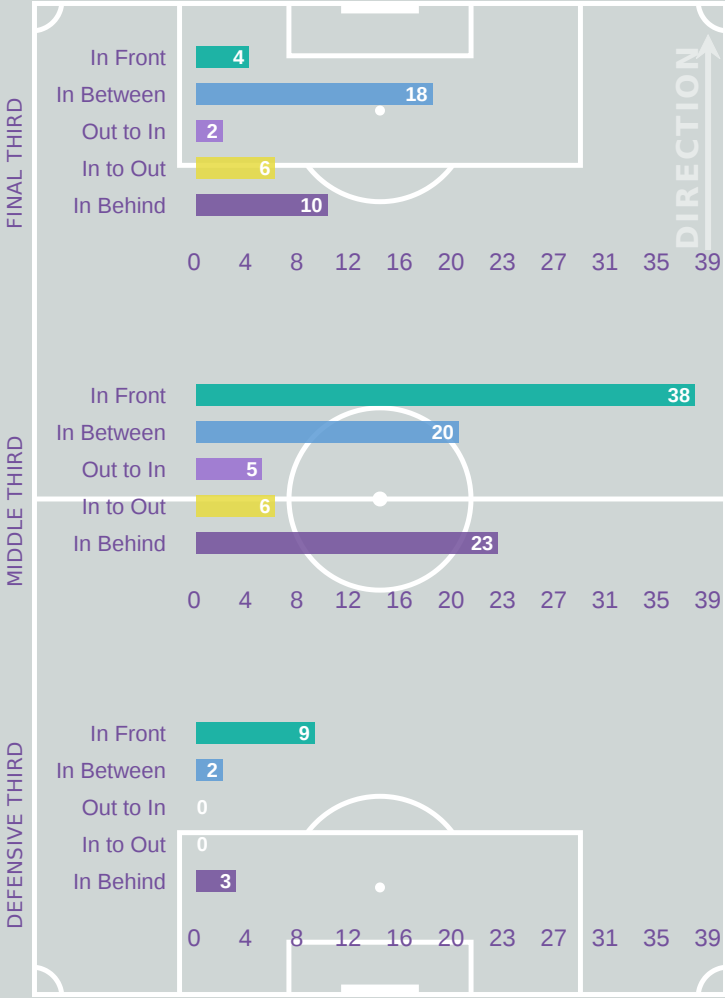


- In Front
- In Between
- Out to In
- In to Out
- In Behind

Top Ranked Players

| Type | Player | Movements |
|------------|-------------------|-----------|
| In Front | 18 MARTINEZ Alexa | 13 |
| In Between | 10 FRAGOSO Abril | 12 |
| Out to In | 20 REYES Citlalli | 3 |
| In to Out | 8 SOTO Alexa | 6 |
| In Behind | 10 FRAGOSO Abril | 6 |

Movement Types Pitch Third





FIFA
U-17 WOMEN'S
WORLD CUP
DOMINICAN REPUBLIC 2024



OUT OF POSSESSION

England 4 - 2 Mexico

Defensive Actions

55

Forced Turnovers

63

Possession Regained

5

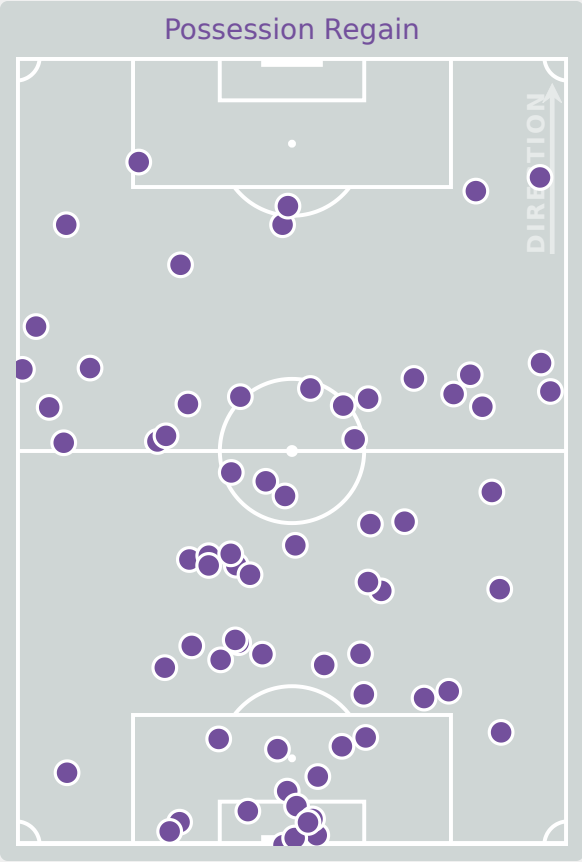
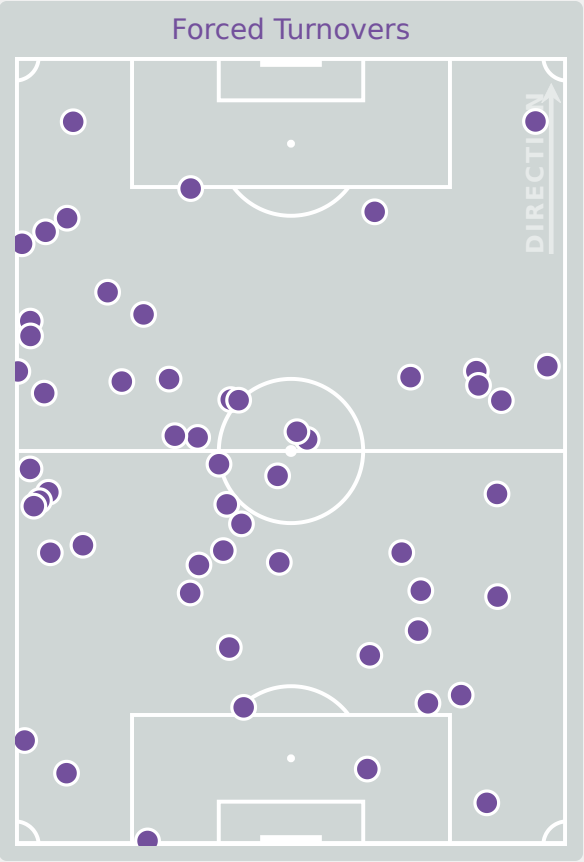
Interceptions

38

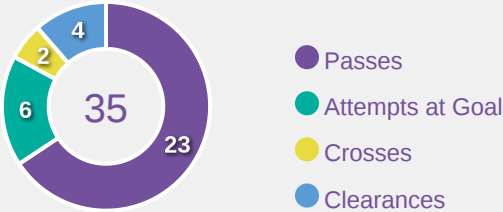
Tackles

1.82

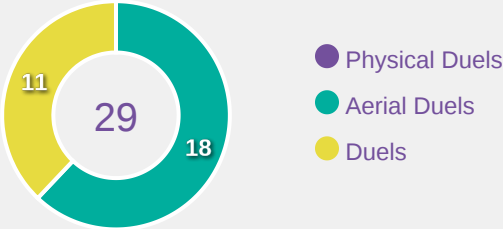
Possession Actions / Defensive Action



Blocks



Possession Contests



Most Possession Regains

13

WELLESLEY-SMITH Cecily

LEFT CENTRE BACK



| # | Player | Total Possession Regains |
|----|------------------------|--------------------------|
| 21 | SPENCER Eva | 11 |
| 2 | LAS Nelly | 6 |
| 3 | MALTBY Rachel | 6 |
| 4 | HARBERT Laila | 6 |
| 5 | SHAW Zara | 6 |
| 6 | WELLESLEY-SMITH Cecily | 13 |
| 7 | PARKINSON Erica | 3 |
| 8 | JUNAID Omotara | 3 |
| 10 | JONES Vera | 1 |
| 11 | BROWN Lola | 2 |
| 20 | OBOAVWODUO Jane | 2 |
| 9 | JOHNSON Olivia | 0 |
| 12 | HARWOOD Sophie | 0 |
| 14 | CASSAP Emily | 0 |
| 17 | THOMPSON Lauryn | 4 |

Defensive Actions

39

Forced Turnovers

51

Possession Regained

10

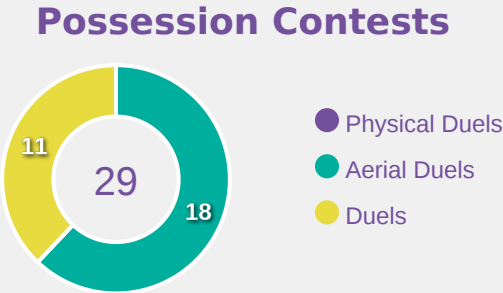
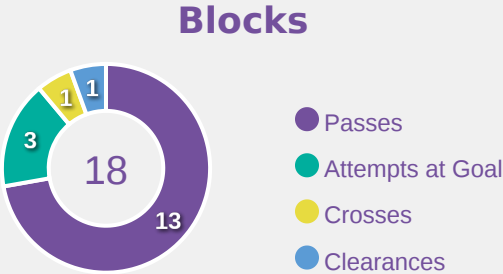
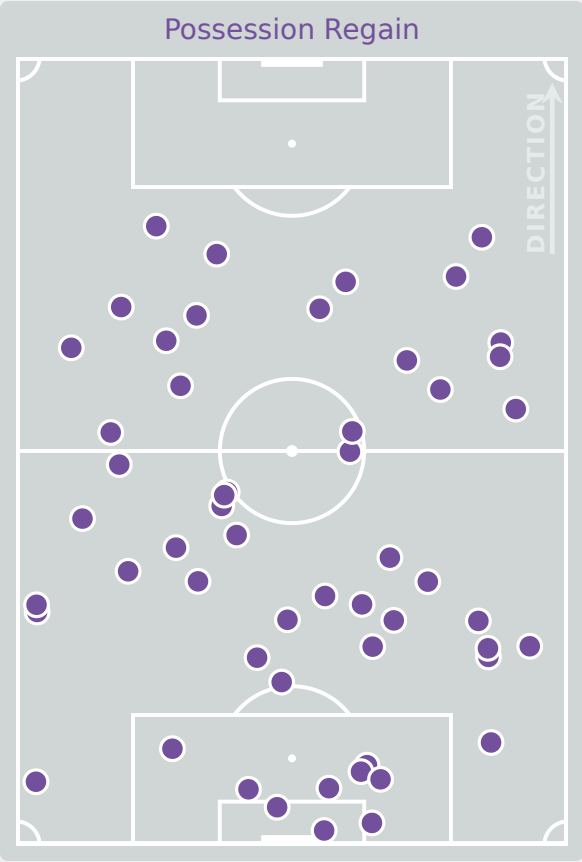
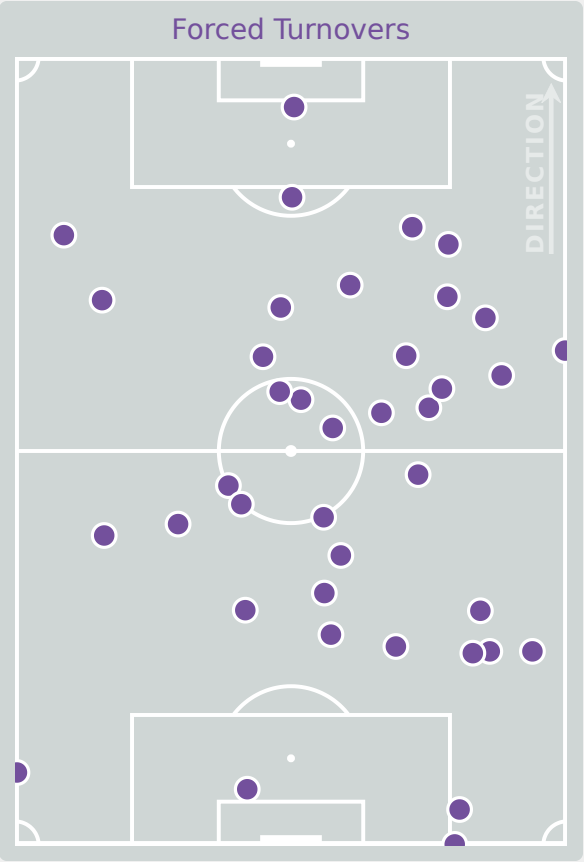
Interceptions

31

Tackles

3.2

Possession Actions / Defensive Action



Most Possession Regains

8

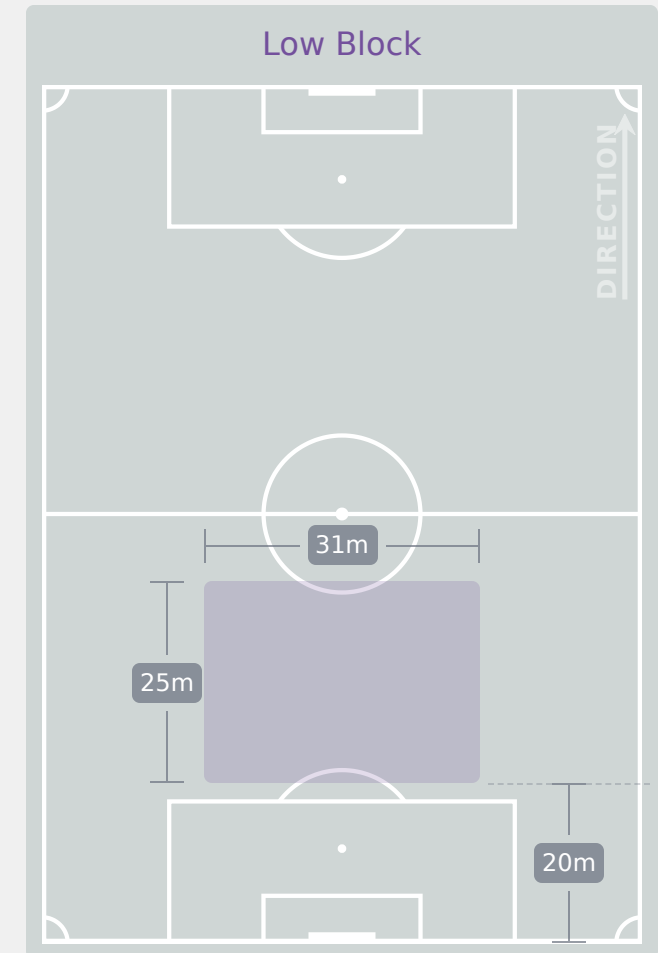
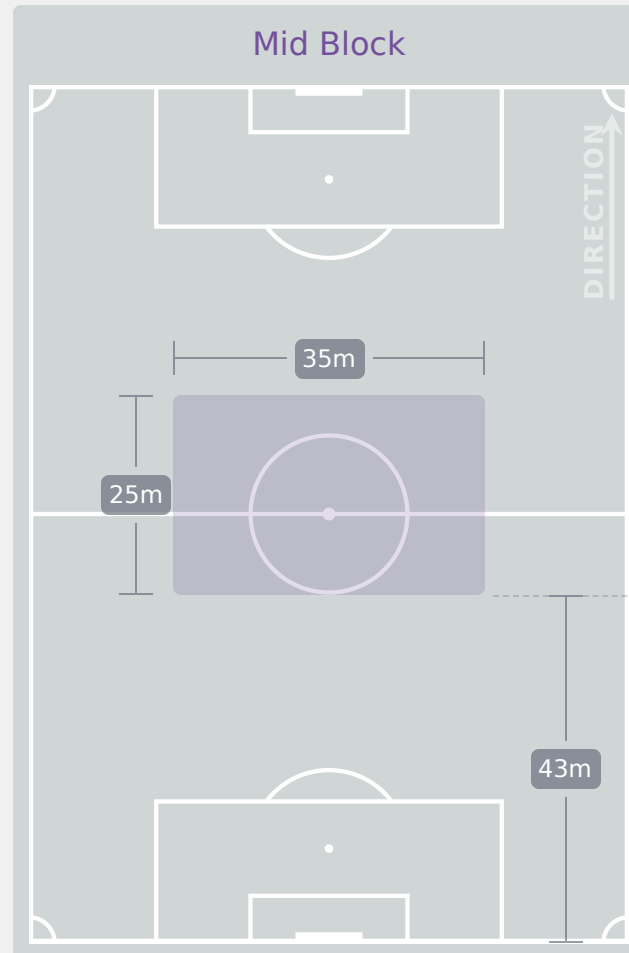
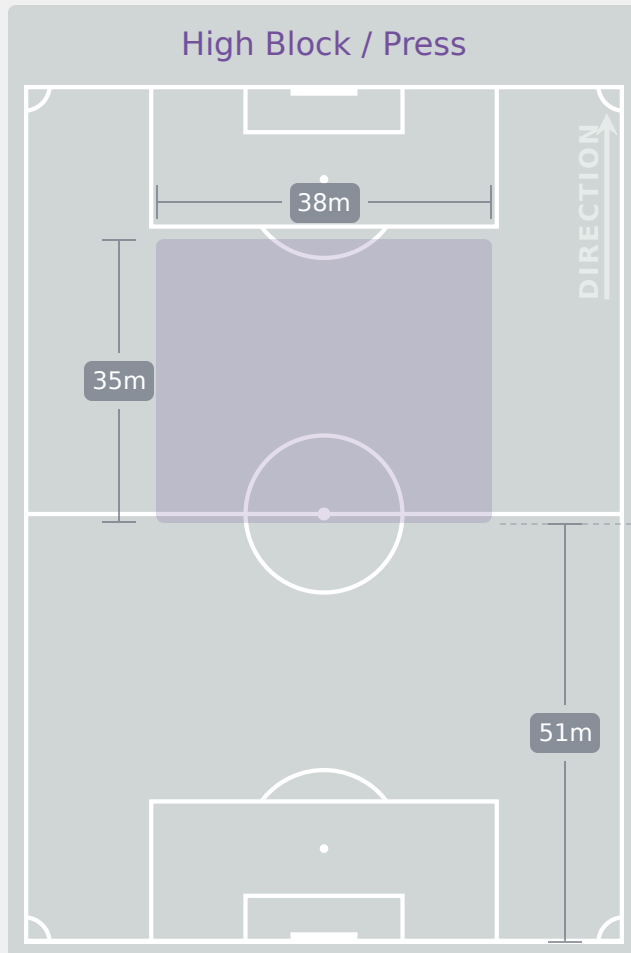
MARTINEZ Alexa

RIGHT BACK

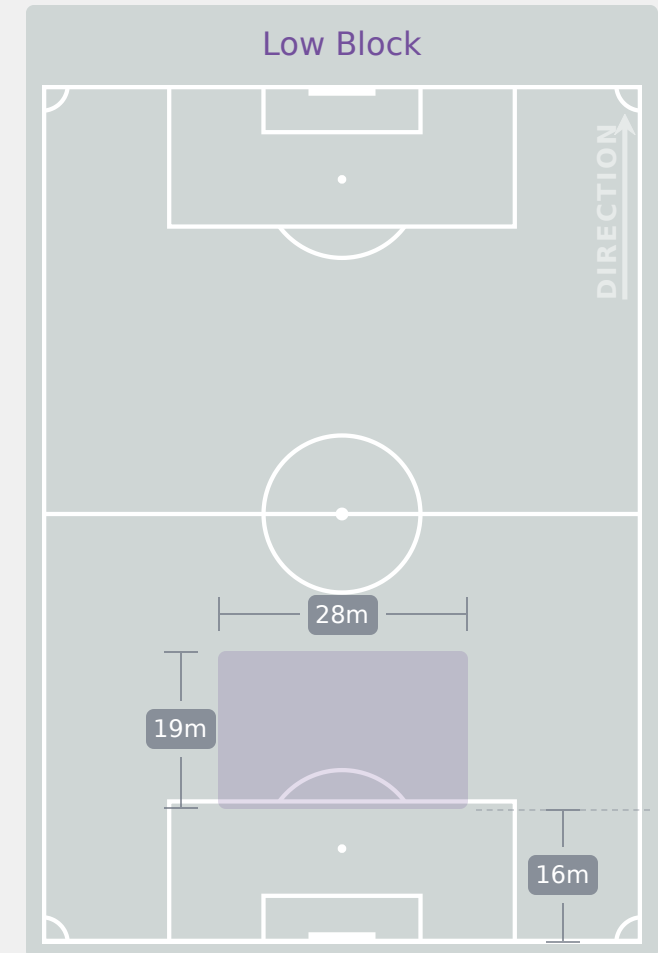
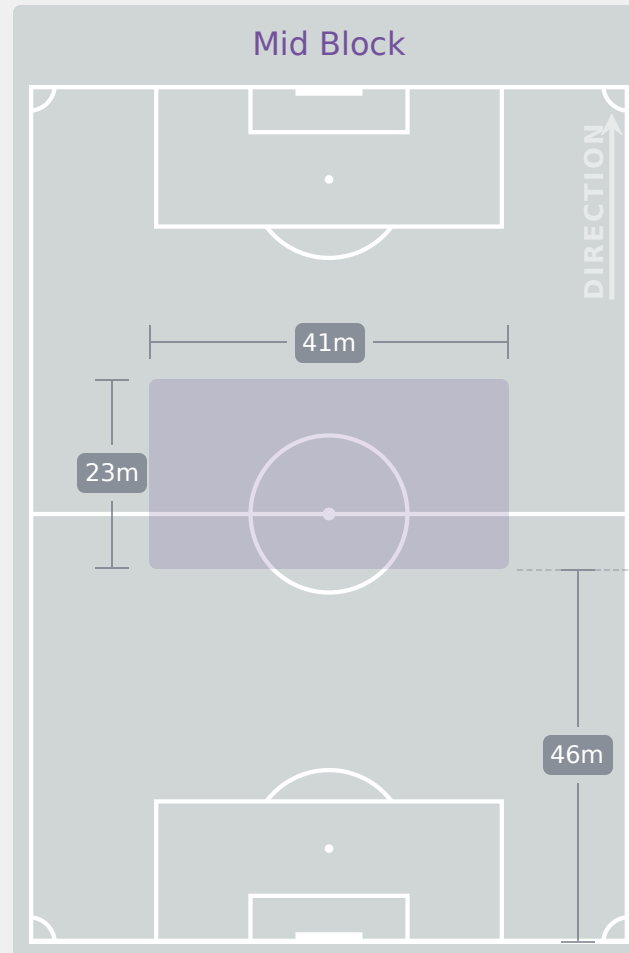
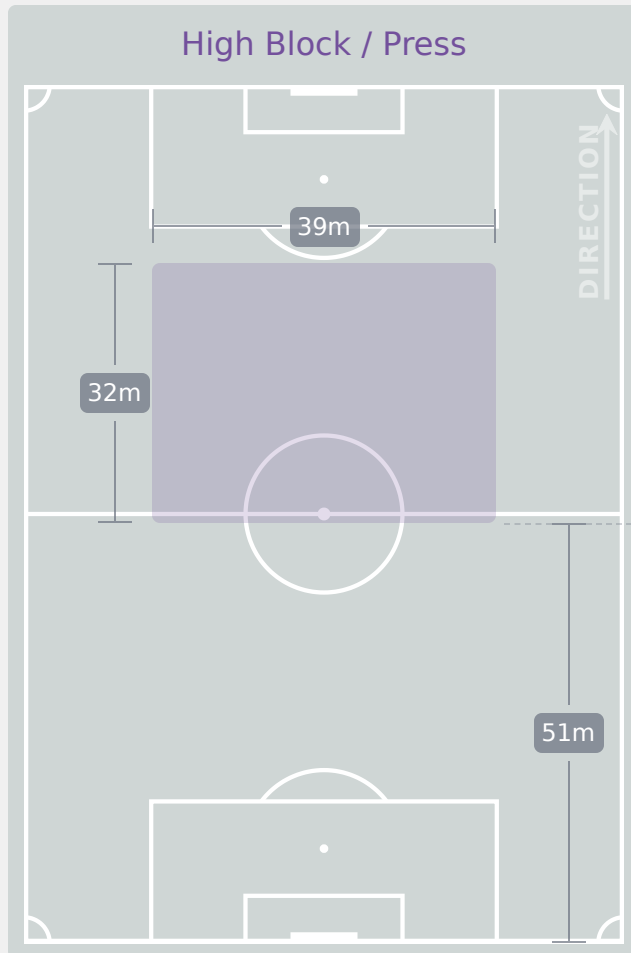


| # | Player | Total Possession Regains |
|----|-------------------|--------------------------|
| 1 | VAZQUEZ Camila | 5 |
| 2 | GONZALEZ Adrianna | 7 |
| 4 | DE LEON Nicol | 5 |
| 8 | SOTO Alexa | 3 |
| 10 | FRAGOSO Abril | 4 |
| 11 | MIYAZATO Anaiya | 2 |
| 13 | IBARRA Berenice | 4 |
| 16 | SALAS Ana | 1 |
| 17 | VAZQUEZ Naomi | 0 |
| 18 | MARTINEZ Alexa | 8 |
| 20 | REYES Citlalli | 1 |
| 5 | VILLALPANDO Mia | 2 |
| 6 | MONTES Monique | 5 |
| 7 | TORRES Ana | 0 |
| 9 | CONTRERAS Evelyn | 1 |
| 19 | NUNEZ Sofia | 3 |

Defensive Line Height & Team Length



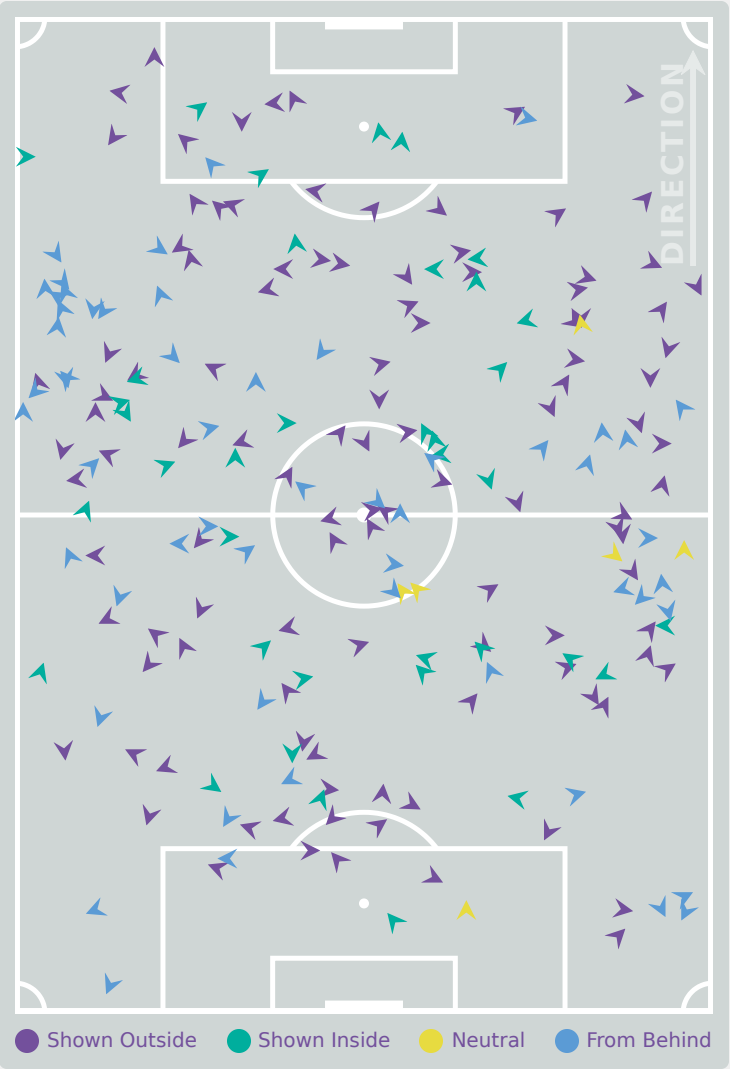
Defensive Line Height & Team Length



Defensive Pressure

 England

Mexico 



| | | |
|-------|----------------------------|-------|
| 216 | Total Pressures | 124 |
| 76 | Direct Pressures | 45 |
| 1.67s | Avg Pressure Duration | 2.18s |
| 55 | Forced Turnovers | 39 |
| 7.42s | Ball Recovery Time | 5.43s |
| 61 | Pushing on into Pressing | 36 |
| 126 | Pushing on | 86 |
| 38 | Pressing Direction Inside | 24 |
| 115 | Pressing Direction Outside | 61 |

Most Direct Pressures

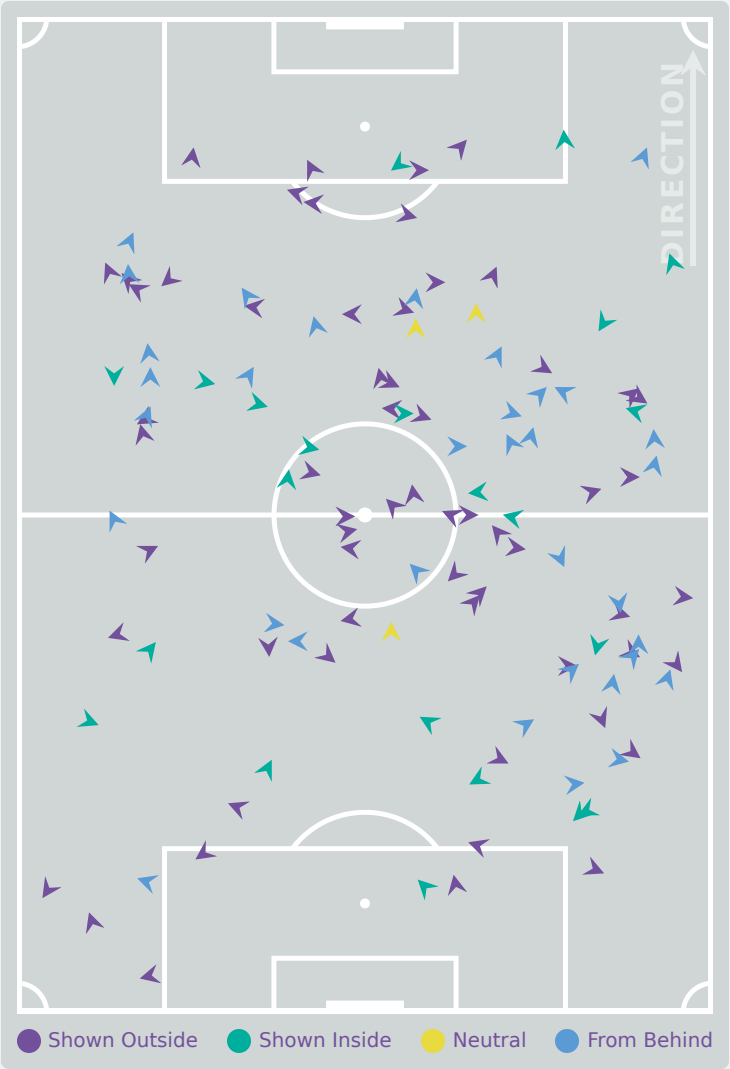
15

PARKINSON Erica
ATTACKING MIDFIELD RIGHT

Most Direct Pressures

7

SOTO Alexa
ATTACKING MIDFIELD





FIFA
U-17 WOMEN'S
WORLD CUP
DOMINICAN REPUBLIC 2024



GOALKEEPING

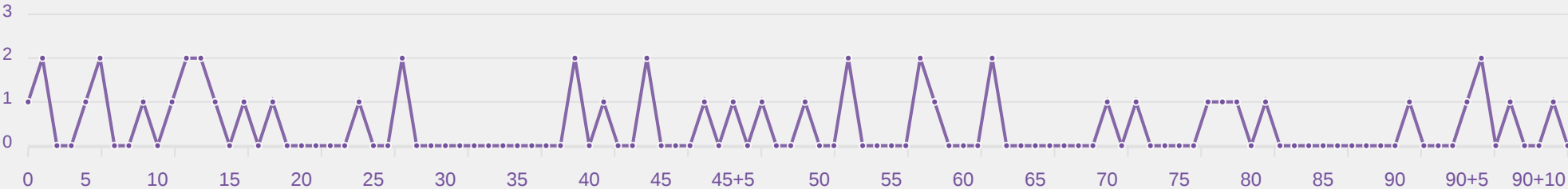
England 4 - 2 Mexico

Goalkeeping Involvement



England

England GK Involvement Timeline



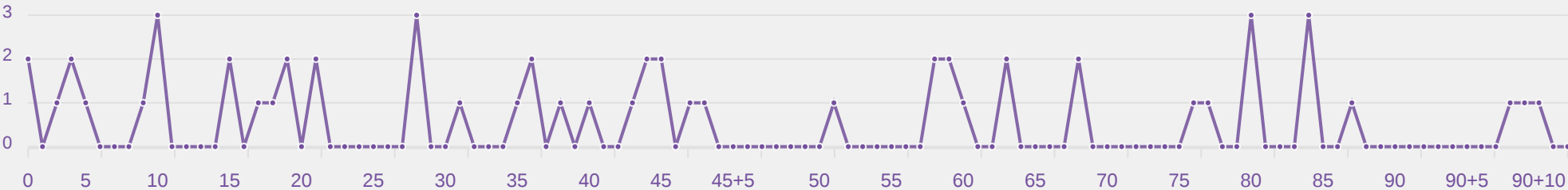
46

Total Involvements



Mexico

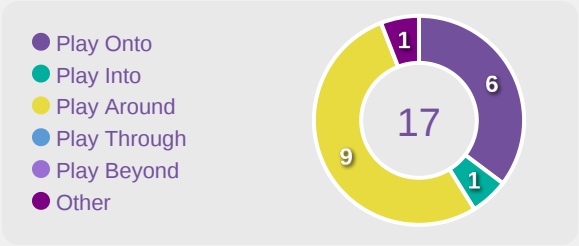
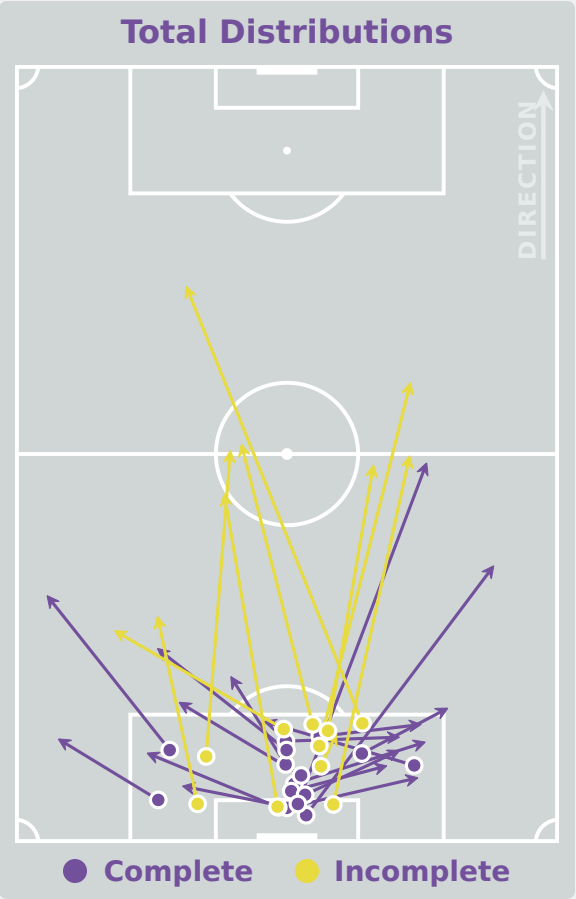
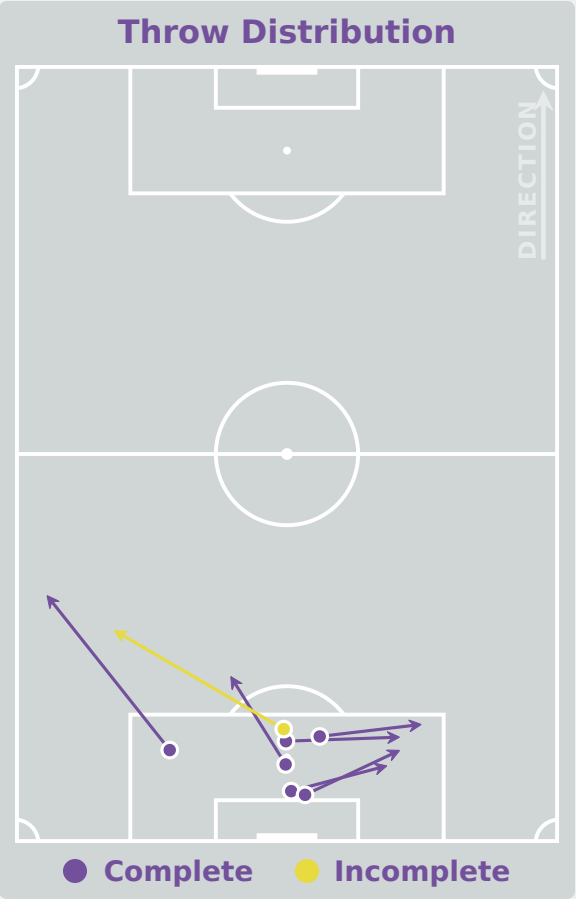
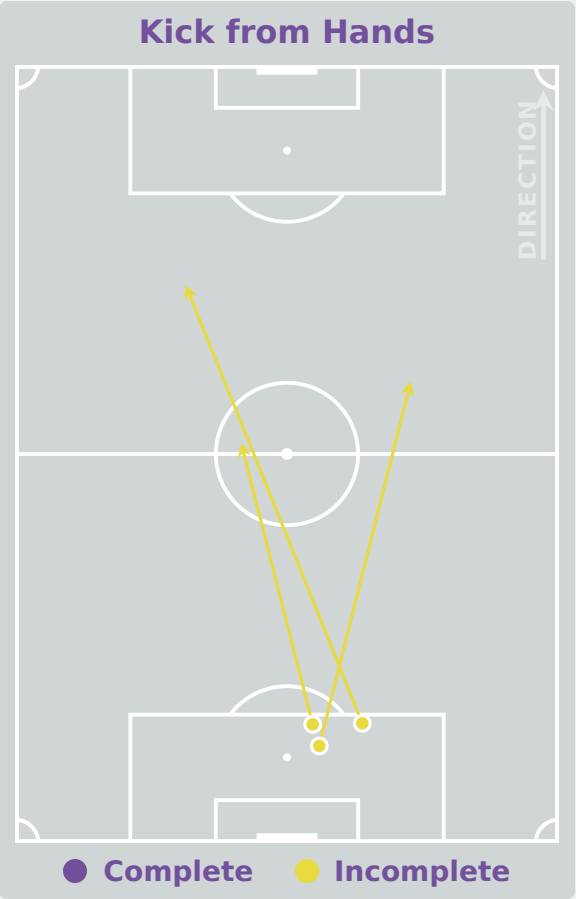
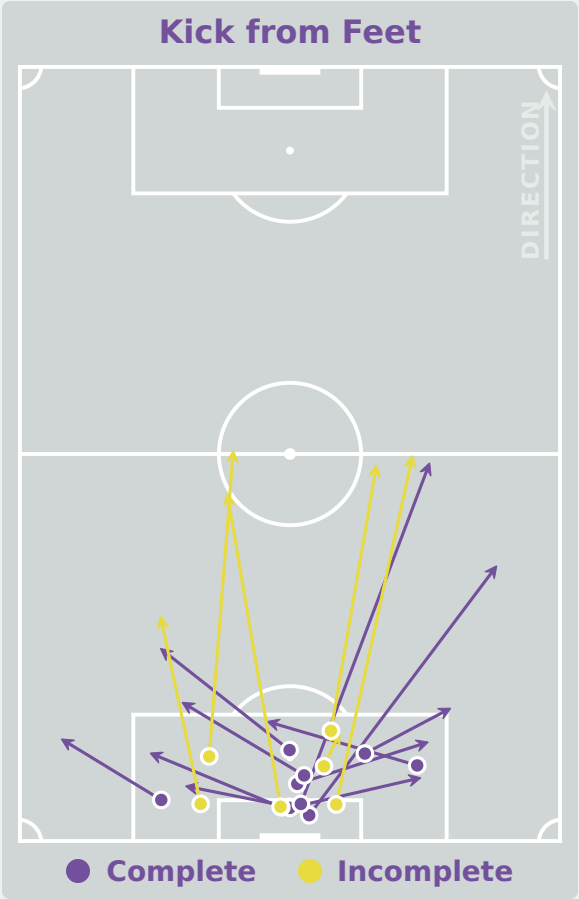
Mexico GK Involvement Timeline



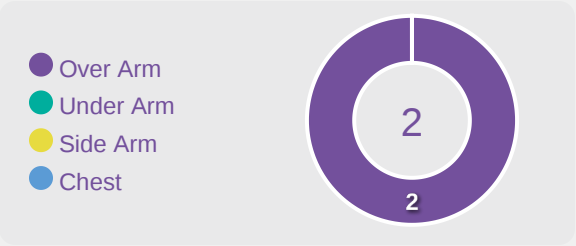
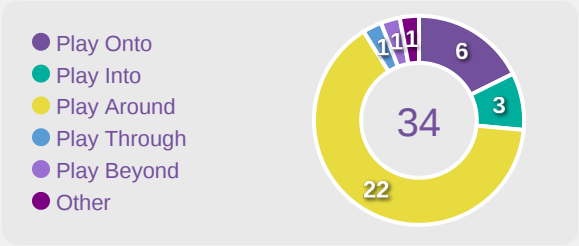
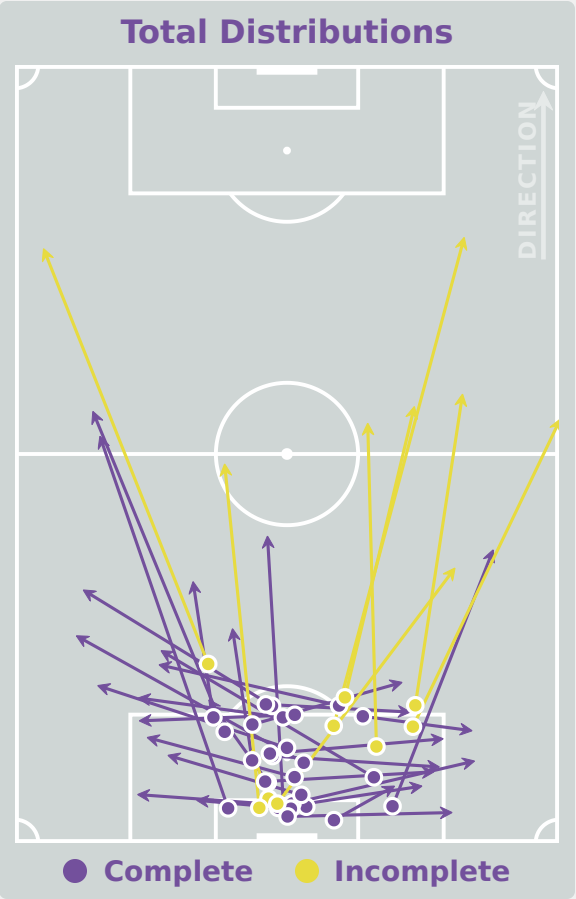
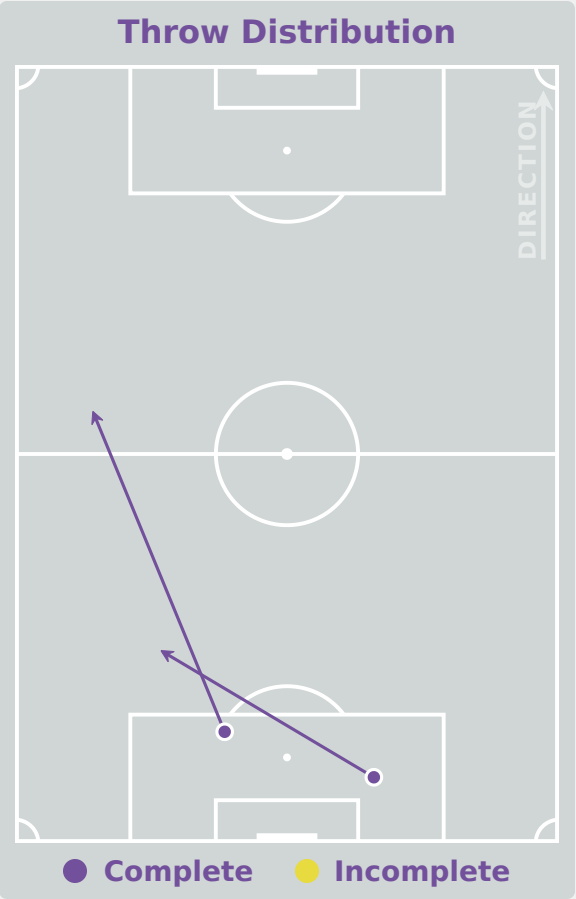
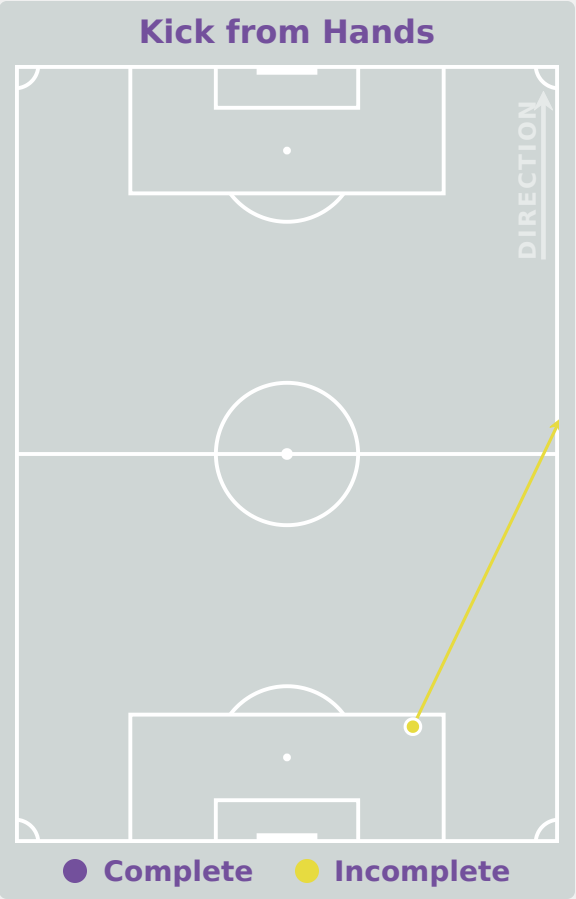
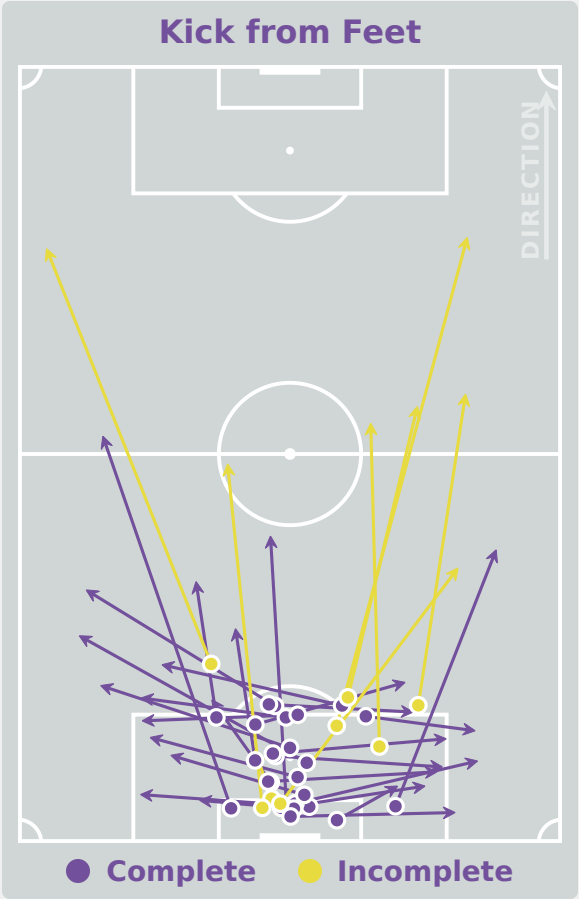
57

Total Involvements

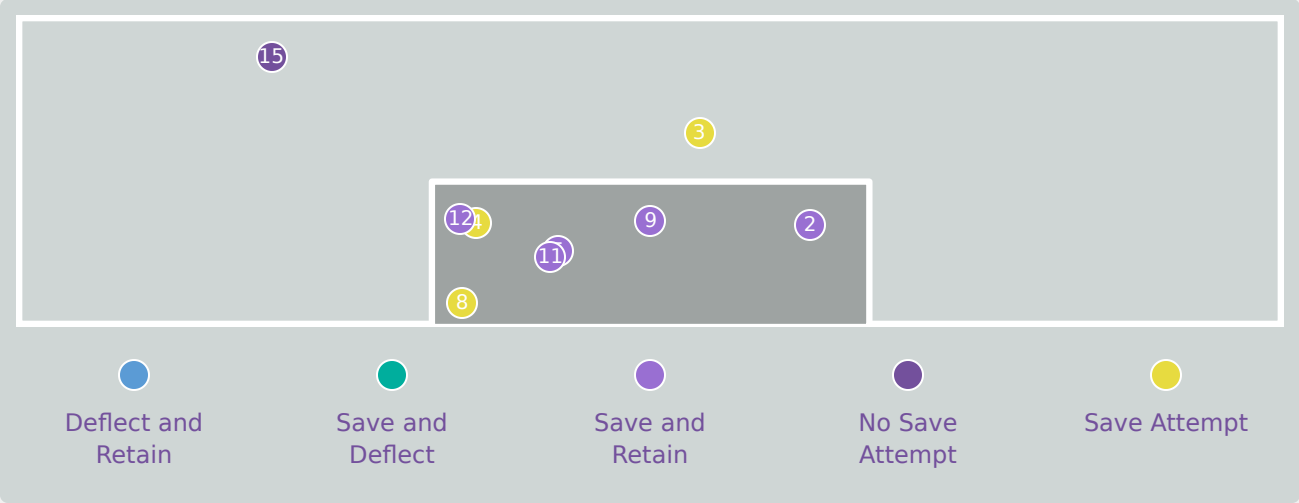
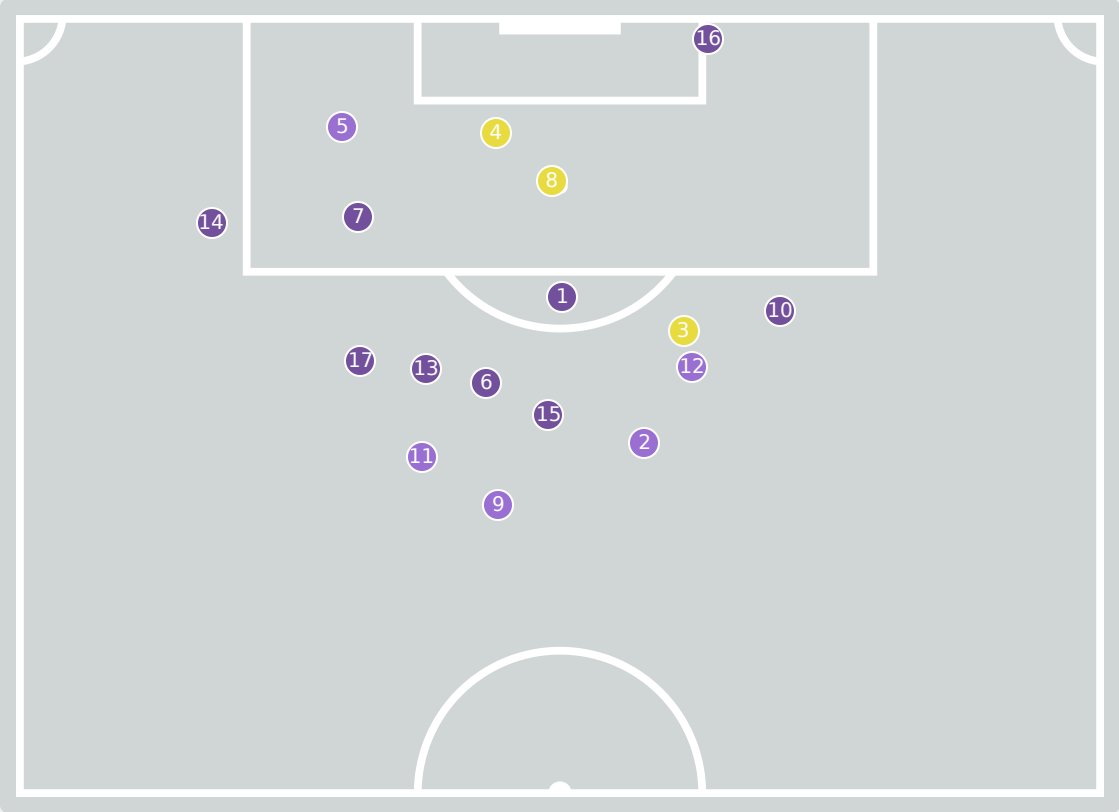
Goalkeeping Distribution



Goalkeeping Distribution



Goal Prevention

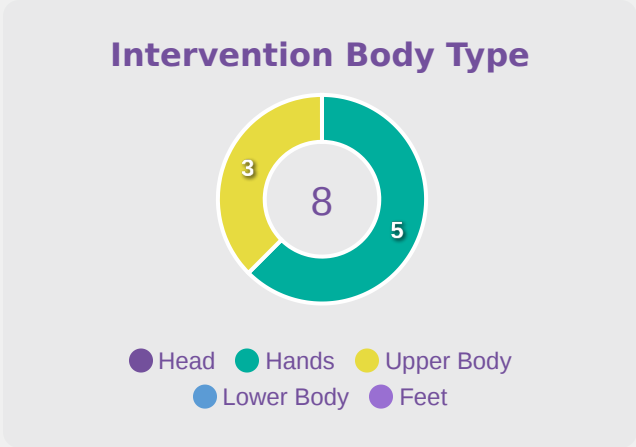
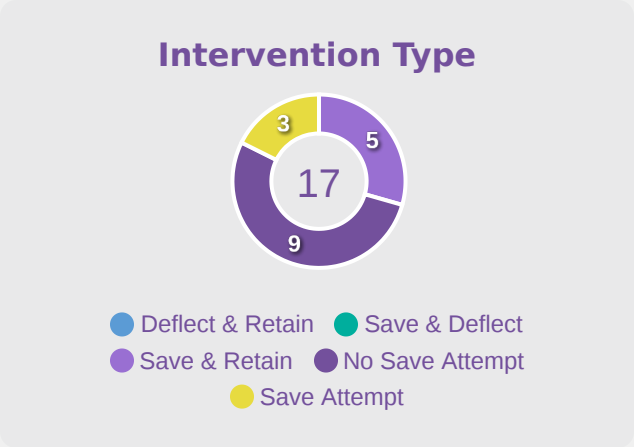


17

Total Attempts on Goal Faced

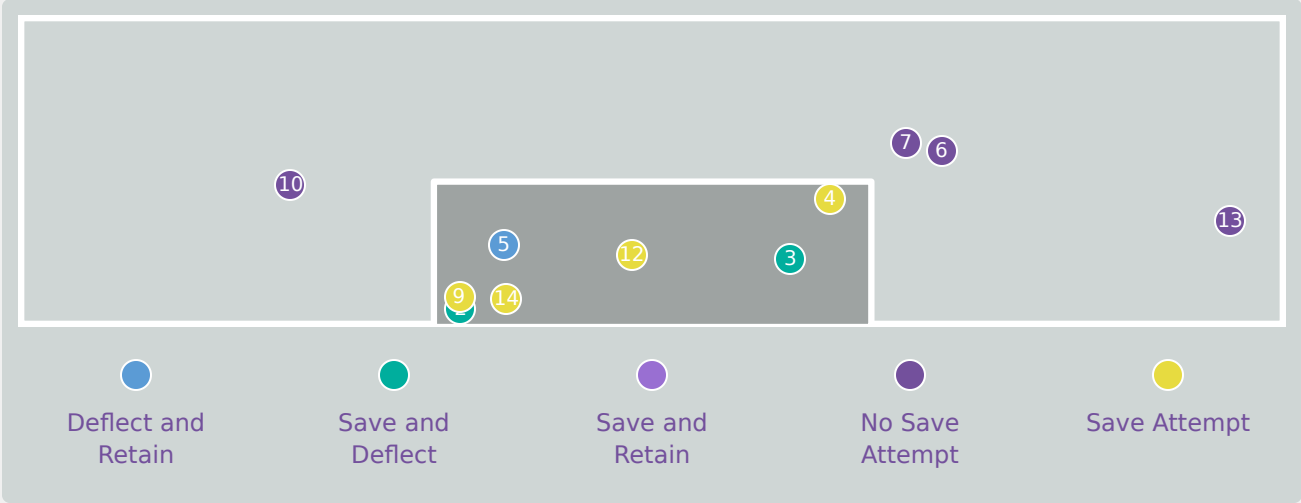
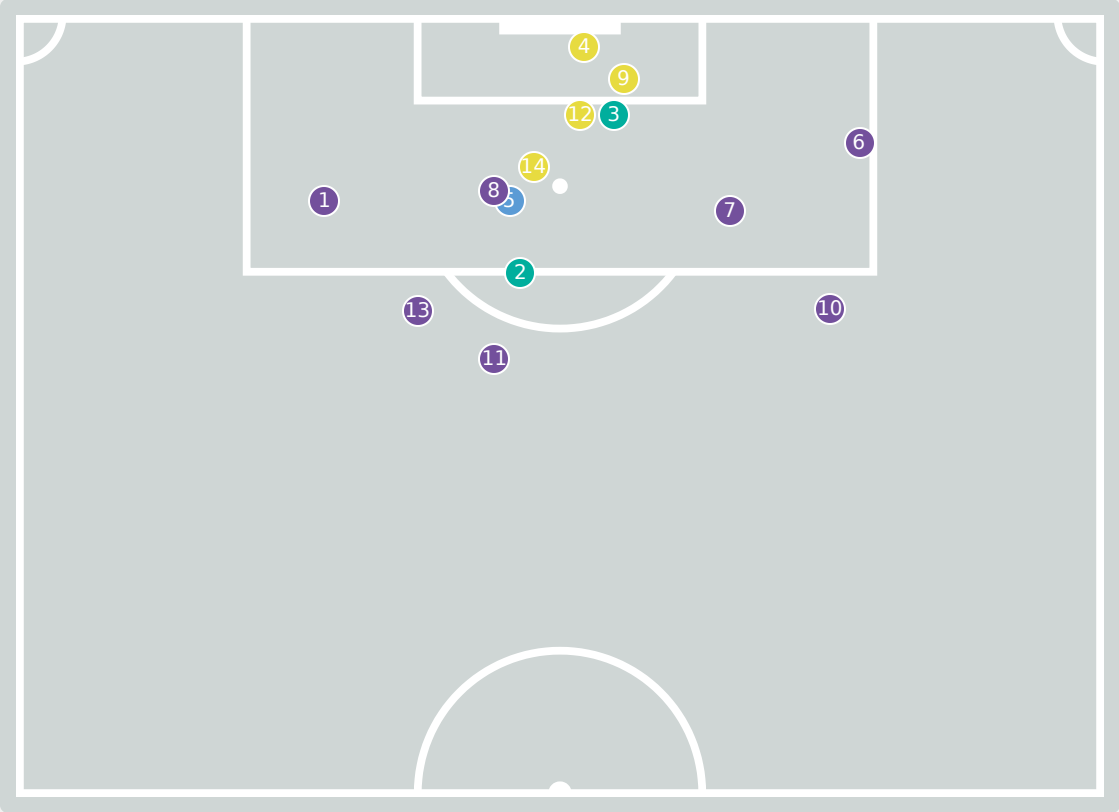
71

Save %



| Total Attempts on Goal Faced | Total Goal Interventions | Save & Retain | Deflect & Retain | Save & Deflect | Save Attempt | No Save Attempt |
|------------------------------|--------------------------|---------------|------------------|----------------|--------------|-----------------|
| 17 | 5 | 5 | 0 | 0 | 3 | 9 |

Goal Prevention

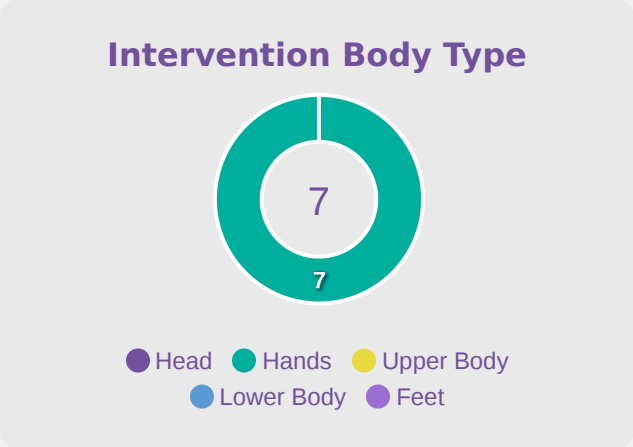
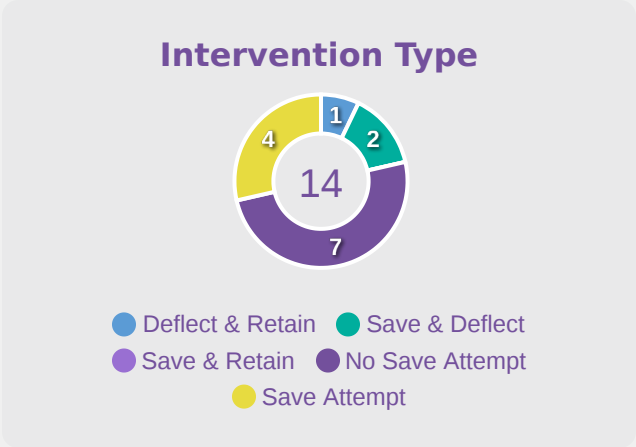


14

Total Attempts on Goal Faced

43

Save %



| Total Attempts on Goal Faced | Total Goal Interventions | Save & Retain | Deflect & Retain | Save & Deflect | Save Attempt | No Save Attempt |
|------------------------------|--------------------------|---------------|------------------|----------------|--------------|-----------------|
| 14 | 2 | 0 | 0 | 2 | 4 | 7 |

Aerial Control



0

Total Interventions

0

Complete

0

Punches

0

Incomplete

0

Complete

0

Claims

0

Incomplete

0

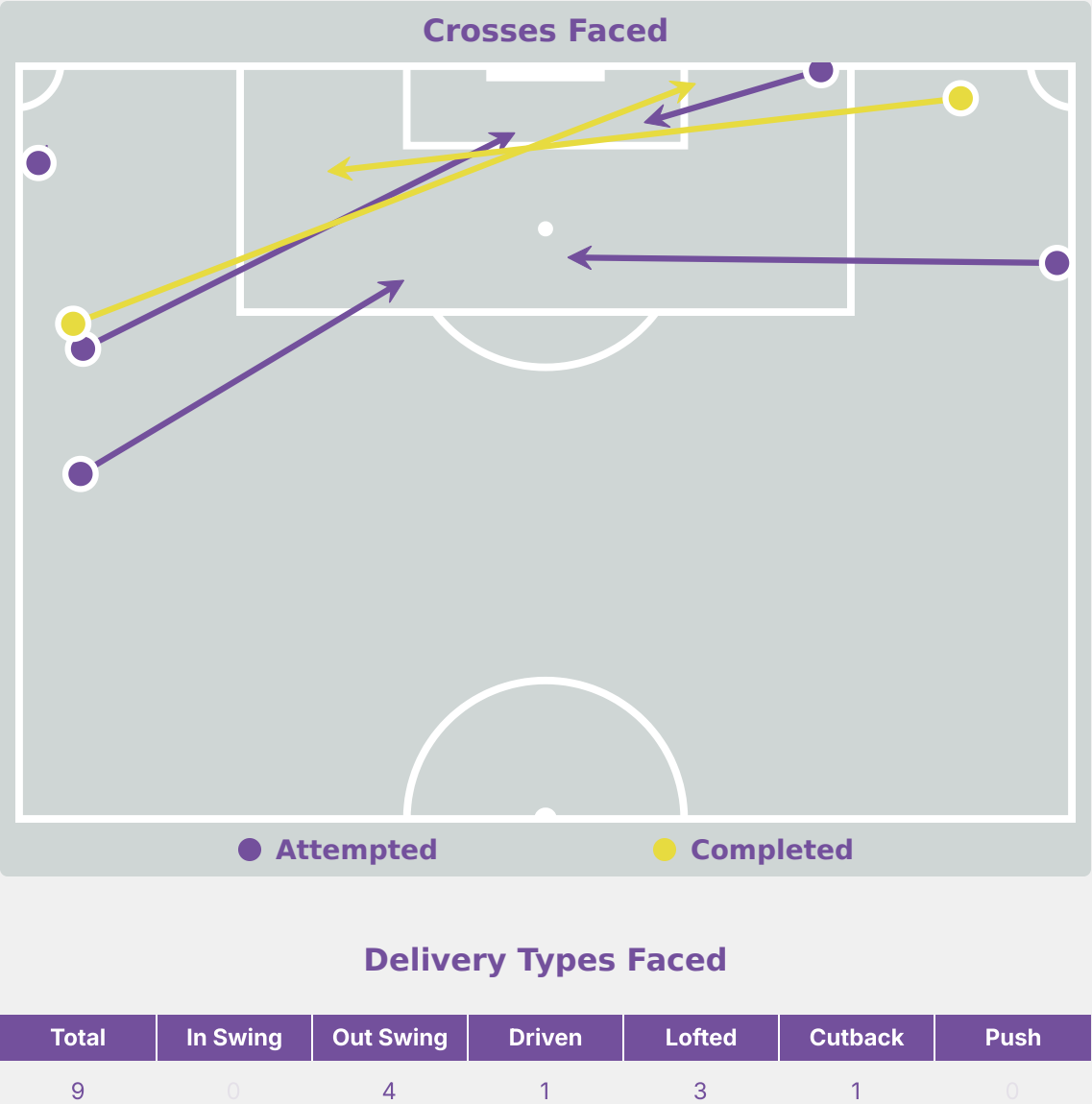
Complete

0

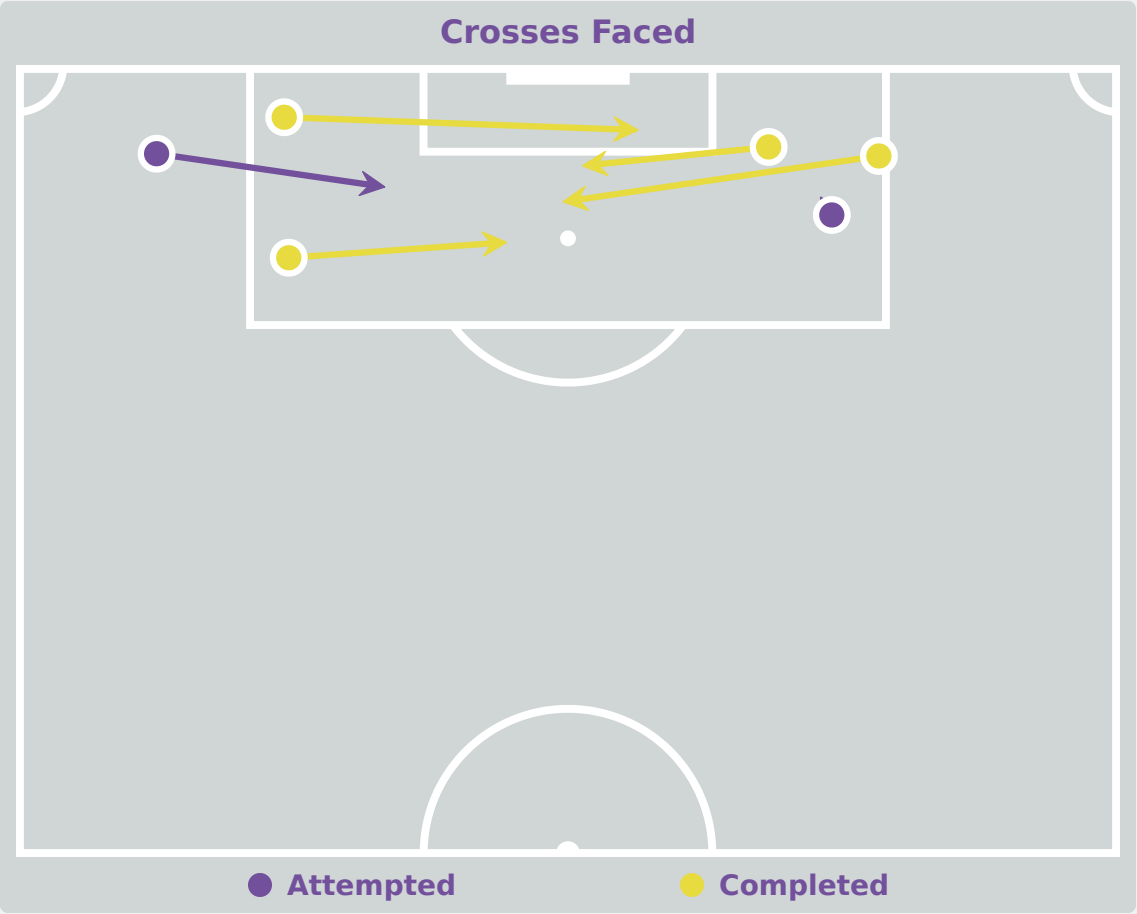
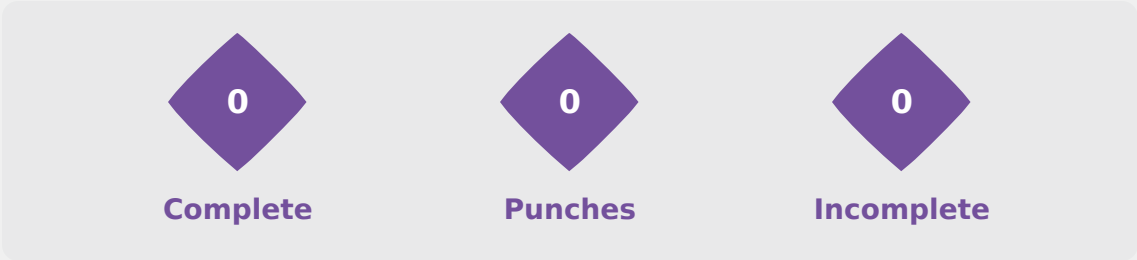
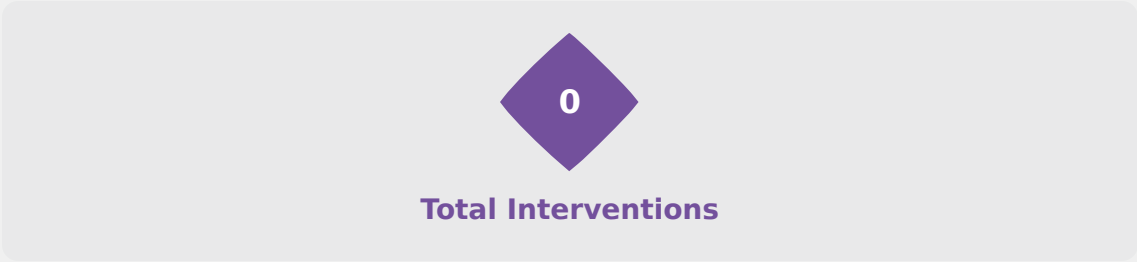
Tipped/Palmed

0

Incomplete



Aerial Control



| Delivery Types Faced | | | | | | |
|----------------------|----------|-----------|--------|--------|---------|------|
| Total | In Swing | Out Swing | Driven | Lofted | Cutback | Push |
| 8 | 0 | 3 | 0 | 2 | 2 | 1 |



FIFA
U-17 WOMEN'S
WORLD CUP
DOMINICAN REPUBLIC 2024



SET PLAYS

England 4 - 2 Mexico

Set Plays



34

Total Set Plays

14

Total Free Kicks

0

Total Penalties

3

Total Corners

17

Total Throw Ins

| Free Kicks | |
|---------------------|-------|
| Type | Total |
| Direct | 12 |
| Direct (on target) | 0 |
| Direct (off target) | 0 |

| | |
|----------|---|
| Indirect | 2 |
|----------|---|

| Corners | | | |
|----------------|----------------|-----------------|-------|
| Delivery Type | From Left Side | From Right Side | Total |
| Direct to Area | 1 | 1 | 2 |
| Short | 0 | 1 | 1 |

| | | | |
|----------------------|---|---|---|
| Edge of Penalty Area | 0 | 0 | 0 |
|----------------------|---|---|---|

| Corners | |
|----------------|-------|
| Delivery Style | Total |
| Inswing | 0 |
| Outswing | 2 |
| Driven | 0 |
| Lofted | 0 |

Set Plays



41

Total Set Plays

22

Total Free Kicks

1

Total Penalties

1

Total Corners

17

Total Throw Ins

| Free Kicks | |
|---------------------|-------|
| Type | Total |
| Direct | 20 |
| Direct (on target) | 1 |
| Direct (off target) | 1 |
| Indirect | 2 |

| Corners | | | |
|----------------------|----------------|-----------------|-------|
| Delivery Type | From Left Side | From Right Side | Total |
| Direct to Area | 0 | 1 | 1 |
| Short | 0 | 0 | 0 |
| Edge of Penalty Area | 0 | 0 | 0 |

| Corners | |
|----------------|-------|
| Delivery Style | Total |
| Inswing | 0 |
| Outswing | 1 |
| Driven | 0 |
| Lofted | 0 |



FIFA
U-17 WOMEN'S
WORLD CUP
DOMINICAN REPUBLIC 2024



INDIVIDUAL DATA IN POSSESSION

England 4 - 2 Mexico

In Possession - Distributions



| # | Player | Passes Attempted | Passes Completed | Pass Completion % | Switches of Play | Crosses Attempted | Crosses Completed | Line Breaks Attempted | Line Breaks Completed | Line Break Completion % | Ball Progressions | Take Ons | Step Ins | Attempts at Goal | Goals |
|----|------------------------|------------------|------------------|-------------------|------------------|-------------------|-------------------|-----------------------|-----------------------|-------------------------|-------------------|----------|----------|------------------|-------|
| 21 | SPENCER Eva | 28 | 18 | 64% | 0 | 0 | 0 | 8 | 3 | 38% | 0 | 0 | 0 | 0 | 0 |
| 2 | LAS Nelly | 13 | 5 | 38% | 0 | 2 | 2 | 4 | 1 | 25% | 0 | 0 | 0 | 1 | 1 |
| 3 | MALTBY Rachel | 28 | 17 | 61% | 0 | 0 | 0 | 20 | 12 | 60% | 1 | 0 | 1 | 1 | 1 |
| 4 | HARBERT Laila | 33 | 19 | 58% | 0 | 0 | 0 | 15 | 6 | 40% | 0 | 0 | 0 | 0 | 0 |
| 5 | SHAW Zara | 38 | 26 | 68% | 0 | 0 | 0 | 13 | 7 | 54% | 0 | 0 | 0 | 1 | 1 |
| 6 | WELLESLEY-SMITH Cecily | 28 | 22 | 79% | 0 | 0 | 0 | 10 | 5 | 50% | 4 | 0 | 4 | 1 | 0 |
| 7 | PARKINSON Erica | 10 | 7 | 70% | 0 | 1 | 0 | 3 | 2 | 67% | 1 | 1 | 0 | 1 | 0 |
| 8 | JUNAID Omotara | 9 | 7 | 78% | 0 | 1 | 0 | 3 | 2 | 67% | 1 | 1 | 0 | 0 | 0 |
| 10 | JONES Vera | 16 | 12 | 75% | 0 | 0 | 0 | 6 | 5 | 83% | 1 | 1 | 0 | 1 | 0 |
| 11 | BROWN Lola | 5 | 5 | 100% | 0 | 2 | 2 | 0 | 0 | 0% | 0 | 0 | 0 | 1 | 0 |
| 20 | OBOAVWODUO Jane | 10 | 7 | 70% | 0 | 1 | 0 | 3 | 2 | 67% | 2 | 1 | 1 | 4 | 0 |
| 9 | JOHNSON Olivia | 1 | 1 | 100% | 0 | 0 | 0 | 0 | 0 | 0% | 0 | 0 | 0 | 1 | 1 |
| 12 | HARWOOD Sophie | 1 | 1 | 100% | 0 | 0 | 0 | 0 | 0 | 0% | 0 | 0 | 0 | 0 | 0 |
| 14 | CASSAP Emily | 4 | 2 | 50% | 0 | 0 | 0 | 2 | 1 | 50% | 0 | 0 | 0 | 0 | 0 |
| 17 | THOMPSON Lauryn | 7 | 2 | 29% | 0 | 1 | 1 | 2 | 1 | 50% | 2 | 0 | 2 | 2 | 0 |

In Possession - Offers & Receptions



| | | | Offer movement types | | | | | | |
|----|------------------------|--------------|----------------------|------------|-----------|-----------|-----------|-------------|-----------------|
| # | Player | Total Offers | In Front | In Between | Out to In | In to Out | In Behind | No Movement | Offers Received |
| 21 | SPENCER Eva | 4 | 0 | 0 | 0 | 0 | 0 | 4 | 2 |
| 2 | LAS Nelly | 11 | 2 | 1 | 0 | 0 | 4 | 4 | 5 |
| 3 | MALTBY Rachel | 6 | 1 | 0 | 0 | 0 | 5 | 0 | 2 |
| 4 | HARBERT Laila | 13 | 6 | 4 | 0 | 0 | 0 | 3 | 4 |
| 5 | SHAW Zara | 1 | 0 | 0 | 0 | 0 | 0 | 1 | 1 |
| 6 | WELLESLEY-SMITH Cecily | 5 | 1 | 0 | 0 | 0 | 0 | 4 | 4 |
| 7 | PARKINSON Erica | 25 | 3 | 3 | 4 | 2 | 9 | 4 | 4 |
| 8 | JUNAID Omotara | 9 | 6 | 0 | 0 | 2 | 1 | 0 | 5 |
| 10 | JONES Vera | 42 | 9 | 22 | 1 | 1 | 7 | 2 | 10 |
| 11 | BROWN Lola | 20 | 4 | 0 | 2 | 1 | 9 | 4 | 4 |
| 20 | OBOAVWODUO Jane | 23 | 1 | 9 | 0 | 1 | 12 | 0 | 9 |
| 9 | JOHNSON Olivia | 2 | 0 | 0 | 0 | 0 | 2 | 0 | 1 |
| 12 | HARWOOD Sophie | 1 | 0 | 0 | 0 | 0 | 1 | 0 | 0 |
| 14 | CASSAP Emily | 3 | 1 | 1 | 0 | 0 | 1 | 0 | 0 |
| 17 | THOMPSON Lauryn | 9 | 2 | 2 | 1 | 1 | 1 | 2 | 1 |

In Possession - Distributions



| # | Player | Passes Attempted | Passes Completed | Pass Completion % | Switches of Play | Crosses Attempted | Crosses Completed | Line Breaks Attempted | Line Breaks Completed | Line Break Completion % | Ball Progressions | Take Ons | Step Ins | Attempts at Goal | Goals |
|----|-------------------|------------------|------------------|-------------------|------------------|-------------------|-------------------|-----------------------|-----------------------|-------------------------|-------------------|----------|----------|------------------|-------|
| 1 | VAZQUEZ Camila | 39 | 30 | 77% | 0 | 0 | 0 | 11 | 6 | 55% | 0 | 0 | 0 | 0 | 0 |
| 2 | GONZALEZ Adrianna | 39 | 24 | 62% | 0 | 0 | 0 | 15 | 6 | 40% | 0 | 0 | 0 | 0 | 0 |
| 4 | DE LEON Nicol | 42 | 35 | 83% | 0 | 0 | 0 | 16 | 12 | 75% | 0 | 0 | 0 | 0 | 0 |
| 8 | SOTO Alexa | 18 | 15 | 83% | 0 | 0 | 0 | 4 | 2 | 50% | 0 | 0 | 0 | 2 | 1 |
| 10 | FRAGOSO Abril | 41 | 26 | 63% | 0 | 2 | 2 | 19 | 11 | 58% | 0 | 0 | 0 | 2 | 0 |
| 11 | MIYAZATO Anaiya | 18 | 11 | 61% | 0 | 1 | 0 | 4 | 1 | 25% | 1 | 1 | 0 | 2 | 0 |
| 13 | IBARRA Berenice | 32 | 27 | 84% | 0 | 1 | 0 | 8 | 4 | 50% | 2 | 1 | 1 | 2 | 0 |
| 16 | SALAS Ana | 10 | 9 | 90% | 0 | 0 | 0 | 3 | 2 | 67% | 0 | 0 | 0 | 1 | 1 |
| 17 | VAZQUEZ Naomy | 6 | 1 | 17% | 0 | 0 | 0 | 1 | 0 | 0% | 0 | 0 | 0 | 1 | 0 |
| 18 | MARTINEZ Alexa | 23 | 15 | 65% | 0 | 1 | 0 | 6 | 6 | 100% | 0 | 0 | 0 | 0 | 0 |
| 20 | REYES Citlalli | 10 | 8 | 80% | 1 | 2 | 1 | 2 | 1 | 50% | 0 | 0 | 0 | 0 | 0 |
| 5 | VILLALPANDO Mia | 15 | 14 | 93% | 0 | 1 | 0 | 5 | 5 | 100% | 0 | 0 | 0 | 0 | 0 |
| 6 | MONTES Monique | 25 | 20 | 80% | 1 | 0 | 0 | 6 | 5 | 83% | 1 | 0 | 1 | 2 | 0 |
| 7 | TORRES Ana | 5 | 3 | 60% | 0 | 0 | 0 | 1 | 0 | 0% | 0 | 0 | 0 | 2 | 0 |
| 9 | CONTRERAS Evelyn | 3 | 1 | 33% | 0 | 0 | 0 | 0 | 0 | 0% | 0 | 0 | 0 | 1 | 0 |
| 19 | NUNEZ Sofia | 12 | 6 | 50% | 0 | 1 | 1 | 8 | 3 | 38% | 3 | 2 | 1 | 2 | 0 |

In Possession - Offers & Receptions



| | | | Offer movement types | | | | | | |
|----|-------------------|--------------|----------------------|------------|-----------|-----------|-----------|-------------|-----------------|
| # | Player | Total Offers | In Front | In Between | Out to In | In to Out | In Behind | No Movement | Offers Received |
| 1 | VAZQUEZ Camila | 9 | 0 | 0 | 0 | 0 | 0 | 9 | 5 |
| 2 | GONZALEZ Adrianna | 7 | 0 | 0 | 0 | 0 | 0 | 7 | 2 |
| 4 | DE LEON Nicol | 8 | 2 | 0 | 0 | 0 | 0 | 6 | 6 |
| 8 | SOTO Alexa | 21 | 4 | 7 | 0 | 6 | 3 | 1 | 7 |
| 10 | FRAGOSO Abril | 19 | 0 | 12 | 0 | 0 | 6 | 1 | 6 |
| 11 | MIYAZATO Anaiya | 9 | 1 | 1 | 2 | 0 | 3 | 2 | 3 |
| 13 | IBARRA Berenice | 24 | 7 | 0 | 1 | 0 | 6 | 10 | 9 |
| 16 | SALAS Ana | 3 | 2 | 1 | 0 | 0 | 0 | 0 | 1 |
| 17 | VAZQUEZ Naomy | 4 | 0 | 0 | 0 | 0 | 2 | 2 | 1 |
| 18 | MARTINEZ Alexa | 42 | 13 | 1 | 1 | 2 | 4 | 21 | 8 |
| 20 | REYES Citlalli | 7 | 0 | 2 | 3 | 1 | 0 | 1 | 3 |
| 5 | VILLALPANDO Mia | 13 | 4 | 1 | 0 | 0 | 4 | 4 | 6 |
| 6 | MONTES Monique | 19 | 11 | 7 | 0 | 0 | 0 | 1 | 9 |
| 7 | TORRES Ana | 4 | 0 | 0 | 0 | 1 | 3 | 0 | 1 |
| 9 | CONTRERAS Evelyn | 10 | 0 | 6 | 0 | 0 | 4 | 0 | 3 |
| 19 | NUNEZ Sofia | 18 | 7 | 4 | 0 | 2 | 2 | 3 | 9 |



FIFA
U-17 WOMEN'S
WORLD CUP
DOMINICAN REPUBLIC 2024



INDIVIDUAL DATA OUT OF POSSESSION

England 4 - 2 Mexico

Out of Possession



| # | Player | Tackles Made / Won | Blocks | Interceptions | Pressing Direct | Pressing Indirect | Duels Won - Aerial | Duels Won - Physical | Possession Contests won | Clearances | Loose Ball Receptions | Pushing On | Pushing On into Pressing | Possession Regains | Possession Interrupted |
|----|------------------------|--------------------|--------|---------------|-----------------|-------------------|--------------------|----------------------|-------------------------|------------|-----------------------|------------|--------------------------|--------------------|------------------------|
| 21 | SPENCER Eva | 0 / 0 | 0 | 0 | 0 | 0 | 0 | 0 | 0 | 2 | 5 | 0 | 0 | 11 | 1 |
| 2 | LAS Nelly | 2 / 1 | 5 | 0 | 6 | 4 | 0 | 0 | 1 | 4 | 3 | 10 | 2 | 6 | 3 |
| 3 | MALTBY Rachel | 2 / 0 | 4 | 1 | 8 | 6 | 0 | 0 | 0 | 8 | 8 | 8 | 4 | 6 | 5 |
| 4 | HARBERT Laila | 5 / 2 | 3 | 2 | 9 | 18 | 0 | 0 | 0 | 4 | 8 | 17 | 5 | 6 | 5 |
| 5 | SHAW Zara | 2 / 1 | 4 | 0 | 4 | 3 | 1 | 0 | 1 | 15 | 8 | 13 | 6 | 6 | 14 |
| 6 | WELLESLEY-SMITH Cecily | 2 / 2 | 4 | 0 | 5 | 4 | 3 | 0 | 3 | 9 | 6 | 6 | 1 | 13 | 6 |
| 7 | PARKINSON Erica | 7 / 2 | 2 | 1 | 15 | 17 | 0 | 0 | 1 | 2 | 8 | 14 | 11 | 3 | 4 |
| 8 | JUNAID Omotara | 6 / 2 | 0 | 1 | 7 | 15 | 0 | 0 | 0 | 1 | 2 | 9 | 6 | 3 | 3 |
| 10 | JONES Vera | 1 / 1 | 2 | 0 | 1 | 17 | 0 | 0 | 2 | 0 | 4 | 10 | 6 | 1 | 2 |
| 11 | BROWN Lola | 3 / 1 | 3 | 0 | 6 | 8 | 1 | 0 | 1 | 0 | 3 | 5 | 2 | 2 | 1 |
| 20 | OBOAVWODUO Jane | 1 / 1 | 4 | 0 | 5 | 33 | 1 | 0 | 3 | 0 | 5 | 23 | 14 | 2 | 2 |
| 9 | JOHNSON Olivia | 0 / 0 | 0 | 0 | 1 | 2 | 0 | 0 | 0 | 0 | 1 | 1 | 0 | 0 | 0 |
| 12 | HARWOOD Sophie | 0 / 0 | 0 | 0 | 0 | 0 | 0 | 0 | 0 | 0 | 0 | 2 | 0 | 0 | 0 |
| 14 | CASSAP Emily | 1 / 0 | 0 | 0 | 0 | 3 | 0 | 0 | 0 | 1 | 3 | 0 | 0 | 0 | 2 |
| 17 | THOMPSON Lauryn | 6 / 2 | 4 | 0 | 9 | 10 | 0 | 0 | 1 | 0 | 3 | 8 | 4 | 4 | 3 |

Out of Possession



| # | Player | Tackles Made / Won | Blocks | Interceptions | Pressing Direct | Pressing Indirect | Duels Won - Aerial | Duels Won - Physical | Possession Contests won | Clearances | Loose Ball Receptions | Pushing On | Pushing On into Pressing | Possession Regains | Possession Interrupted |
|----|-------------------|--------------------|--------|---------------|-----------------|-------------------|--------------------|----------------------|-------------------------|------------|-----------------------|------------|--------------------------|--------------------|------------------------|
| 1 | VAZQUEZ Camila | 0 / 0 | 0 | 0 | 0 | 0 | 0 | 0 | 0 | 3 | 1 | 0 | 0 | 5 | 3 |
| 2 | GONZALEZ Adrianna | 3 / 1 | 2 | 2 | 3 | 3 | 0 | 0 | 0 | 10 | 8 | 2 | 1 | 7 | 6 |
| 4 | DE LEON Nicol | 1 / 1 | 1 | 2 | 1 | 2 | 0 | 0 | 0 | 5 | 7 | 0 | 0 | 5 | 3 |
| 8 | SOTO Alexa | 5 / 0 | 0 | 1 | 7 | 12 | 2 | 0 | 2 | 0 | 9 | 10 | 2 | 3 | 0 |
| 10 | FRAGOSO Abril | 6 / 4 | 3 | 0 | 7 | 11 | 0 | 0 | 0 | 1 | 7 | 9 | 5 | 4 | 4 |
| 11 | MIYAZATO Anaiya | 3 / 0 | 1 | 0 | 3 | 6 | 1 | 0 | 1 | 1 | 6 | 4 | 2 | 2 | 1 |
| 13 | IBARRA Berenice | 1 / 0 | 3 | 2 | 3 | 5 | 2 | 0 | 2 | 5 | 8 | 14 | 6 | 4 | 5 |
| 16 | SALAS Ana | 1 / 0 | 2 | 0 | 3 | 1 | 2 | 0 | 2 | 2 | 1 | 2 | 2 | 1 | 2 |
| 17 | VAZQUEZ Naomy | 0 / 0 | 2 | 0 | 2 | 9 | 0 | 0 | 1 | 0 | 3 | 7 | 2 | 0 | 1 |
| 18 | MARTINEZ Alexa | 4 / 3 | 2 | 1 | 6 | 8 | 1 | 0 | 1 | 3 | 8 | 11 | 8 | 8 | 2 |
| 20 | REYES Citlalli | 0 / 0 | 0 | 0 | 2 | 7 | 0 | 0 | 2 | 0 | 3 | 11 | 3 | 1 | 0 |
| 5 | VILLALPANDO Mia | 3 / 0 | 1 | 0 | 0 | 3 | 1 | 0 | 2 | 0 | 3 | 3 | 1 | 2 | 0 |
| 6 | MONTES Monique | 0 / 0 | 4 | 1 | 0 | 3 | 1 | 0 | 1 | 3 | 9 | 5 | 2 | 5 | 5 |
| 7 | TORRES Ana | 0 / 0 | 0 | 0 | 3 | 1 | 0 | 0 | 0 | 0 | 2 | 0 | 0 | 0 | 0 |
| 9 | CONTRERAS Evelyn | 1 / 0 | 0 | 0 | 3 | 8 | 2 | 0 | 3 | 0 | 1 | 4 | 2 | 1 | 0 |
| 19 | NUNEZ Sofia | 3 / 2 | 0 | 1 | 2 | 0 | 0 | 0 | 0 | 0 | 7 | 4 | 0 | 3 | 1 |



FIFA
U-17 WOMEN'S
WORLD CUP
DOMINICAN REPUBLIC 2024



INDIVIDUAL DATA PHYSICAL

England 4 - 2 Mexico

| # | Player | Total Distance (m) | Zone 1: 0-7 km/h (m) | Zone 2: 7-13km/h (m) | Zone 3: 13-19km/h (m) | Zone 4: 19-23km/h (m) | Zone 5: 23+ km/h (m) | High Speed Runs (Zone 4) | Sprints (Zone 5) | Top Speed (km/h) |
|----|------------------------|--------------------|----------------------|----------------------|-----------------------|-----------------------|----------------------|--------------------------|------------------|------------------|
| 21 | SPENCER Eva | 4740.3 | 3465.2 | 1173.4 | 72.3 | 29.4 | 0 | 5.0 | 0 | 22.2 |
| 2 | LAS Nelly | 10516.2 | 3684.3 | 4231.0 | 1693.9 | 764.9 | 142.1 | 72.0 | 12.0 | 28.5 |
| 3 | MALTBY Rachel | 10058.9 | 3635.8 | 4531.0 | 1375.3 | 427.1 | 89.7 | 49.0 | 13.0 | 27.5 |
| 4 | HARBERT Laila | 10077.2 | 3876.5 | 4651.2 | 1222.2 | 291.0 | 36.3 | 29.0 | 5.0 | 28.2 |
| 5 | SHAW Zara | 9073.1 | 3590.2 | 4184.4 | 989.5 | 298.1 | 10.8 | 26.0 | 2.0 | 26.7 |
| 6 | WELLESLEY-SMITH Cecily | 8851.2 | 3619.1 | 3745.9 | 1089.1 | 372.4 | 24.7 | 41.0 | 5.0 | 25.8 |
| 7 | PARKINSON Erica | 8381.5 | 3405.3 | 3410.3 | 1065.8 | 457.0 | 43.0 | 53.0 | 5.0 | 27.5 |
| 8 | JUNAID Omotara | 6265.1 | 2235.2 | 3141.7 | 773.9 | 110.6 | 3.6 | 12.0 | 1.0 | 24.2 |
| 10 | JONES Vera | 7793.6 | 2686.0 | 3715.9 | 1101.6 | 271.9 | 18.2 | 34.0 | 3.0 | 28.1 |
| 11 | BROWN Lola | 5408.8 | 1752.8 | 2518.0 | 861.9 | 272.5 | 3.5 | 26.0 | 1.0 | 25.1 |
| 20 | OBOAVWODUO Jane | 8215.2 | 3938.6 | 2691.8 | 955.7 | 434.8 | 194.3 | 60.0 | 10.0 | 30.5 |
| 9 | JOHNSON Olivia | 863.7 | 289.6 | 319.1 | 97.1 | 115.4 | 42.6 | 11.0 | 4.0 | 30.1 |
| 12 | HARWOOD Sophie | 1653.4 | 544.6 | 730.0 | 296.1 | 71.6 | 11.0 | 10.0 | 3.0 | 25.5 |
| 14 | CASSAP Emily | 2611.3 | 917.5 | 1265.0 | 361.0 | 67.9 | 0 | 4.0 | 0 | 21.9 |
| 17 | THOMPSON Lauryn | 5000.8 | 1932.6 | 2239.2 | 498.8 | 279.5 | 50.7 | 36.0 | 4.0 | 27.3 |

Physical Data



| # | Player | Total Distance (m) | Zone 1: 0-7 km/h (m) | Zone 2: 7-13km/h (m) | Zone 3: 13-19km/h (m) | Zone 4: 19-23km/h (m) | Zone 5: 23+ km/h (m) | High Speed Runs (Zone 4) | Sprints (Zone 5) | Top Speed (km/h) |
|----|-------------------|--------------------|----------------------|----------------------|-----------------------|-----------------------|----------------------|--------------------------|------------------|------------------|
| 1 | VAZQUEZ Camila | 5799.4 | 4368.5 | 1260.3 | 149.0 | 21.6 | 0 | 3.0 | 0 | 24.4 |
| 2 | GONZALEZ Adrianna | 9326.9 | 3625.7 | 4120.4 | 1153.5 | 323.1 | 104.2 | 43.0 | 10.0 | 29.5 |
| 4 | DE LEON Nicol | 8516.1 | 3260.5 | 3677.7 | 1185.9 | 347.8 | 44.1 | 36.0 | 2.0 | 27.5 |
| 8 | SOTO Alexa | 8001.1 | 3004.1 | 3651.5 | 1098.2 | 222.3 | 25.0 | 24.0 | 2.0 | 26.2 |
| 10 | FRAGOSO Abril | 9893.7 | 3961.3 | 4555.9 | 1067.3 | 293.9 | 15.3 | 35.0 | 2.0 | 26.0 |
| 11 | MIYAZATO Anaiya | 9512.3 | 4065.2 | 4181.9 | 919.0 | 295.2 | 51.0 | 36.0 | 5.0 | 27.9 |
| 13 | IBARRA Berenice | 9502.8 | 3710.8 | 4637.2 | 878.4 | 254.8 | 21.5 | 23.0 | 3.0 | 26.9 |
| 16 | SALAS Ana | 2533.1 | 876.2 | 1321.6 | 286.7 | 44.8 | 3.8 | 6.0 | 1.0 | 23.4 |
| 17 | VAZQUEZ Naomy | 6692.5 | 2822.1 | 2555.1 | 872.8 | 333.8 | 108.6 | 40.0 | 10.0 | 27.9 |
| 18 | MARTINEZ Alexa | 7020.3 | 2900.5 | 2754.6 | 875.2 | 440.3 | 49.7 | 44.0 | 5.0 | 26.6 |
| 20 | REYES Citlalli | 6109.2 | 2553.9 | 2505.6 | 752.4 | 279.4 | 17.9 | 33.0 | 2.0 | 26.4 |
| 5 | VILLALPANDO Mia | 3452.8 | 1110.2 | 1457.7 | 671.6 | 198.9 | 14.3 | 19.0 | 2.0 | 26.6 |
| 6 | MONTES Monique | 7477.3 | 3004.7 | 3040.6 | 1071.2 | 327.1 | 33.7 | 30.0 | 2.0 | 27.7 |
| 7 | TORRES Ana | 3188.3 | 1220.0 | 1296.9 | 499.5 | 164.8 | 7.1 | 16.0 | 1.0 | 25.5 |
| 9 | CONTRERAS Evelyn | 3345.2 | 1384.0 | 1266.7 | 494.0 | 178.6 | 22.0 | 17.0 | 2.0 | 27.0 |
| 19 | NUNEZ Sofia | 3194.6 | 1120.6 | 1450.8 | 453.6 | 162.5 | 7.1 | 18.0 | 1.0 | 25.4 |



FIFA
U-17 WOMEN'S
WORLD CUP
DOMINICAN REPUBLIC 2024

