

FIFA
U-20 WOMEN'S WORLD CUP
COLOMBIA 2024

Germany 3 - 1 Nigeria

Group D - Match 17
04 September 2024
17:00 Kick Off
El Techo Stadium

POST MATCH SUMMARY REPORT

Match Summary - Teams



Germany

3

1

Nigeria



STARTING

-  1 GK ADAMCZYK Rebecca
-  3 MF JANZEN Mathilde

↓ 45'
-  4 DF VEIT Jella
-  5 DF DIEHM Vanessa
-  7 FW ZICAI Cora

↓ 90+1'
-  8 MF ZDEBEL Sofie

 61'
-  9 FW STEINER Marie

↓ 77'
-  11 FW BAUM Lisa

↓ 45'
-  15 DF SCHNEIDER Tomke
-  17 MF SEHITLER Alara

 17'
-  20 FW GLONING Laura

SUBSTITUTES

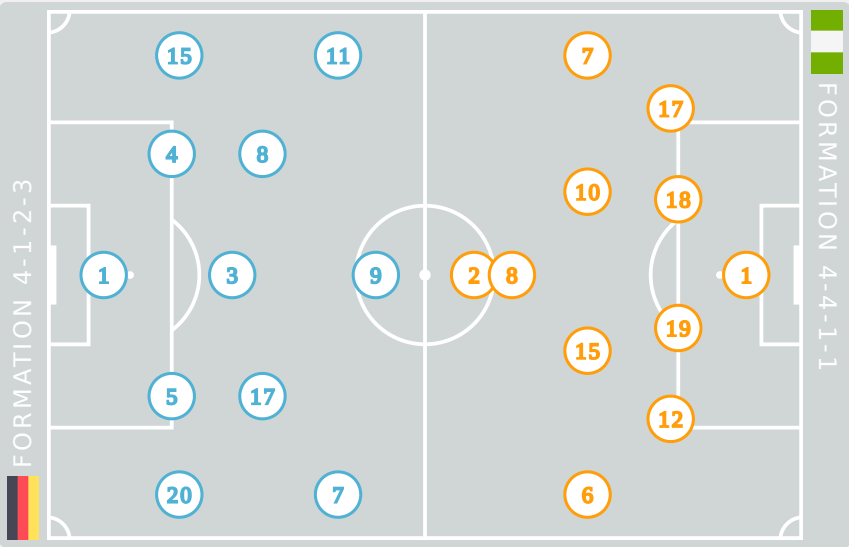
-  12 GK BECK Kiara
-  21 GK VON SCHRADER Lina
-  2 DF HILS Miriam

↑ 90+1'
-  6 DF RITTER Sara
-  10 FW NACHTIGALL Sophie

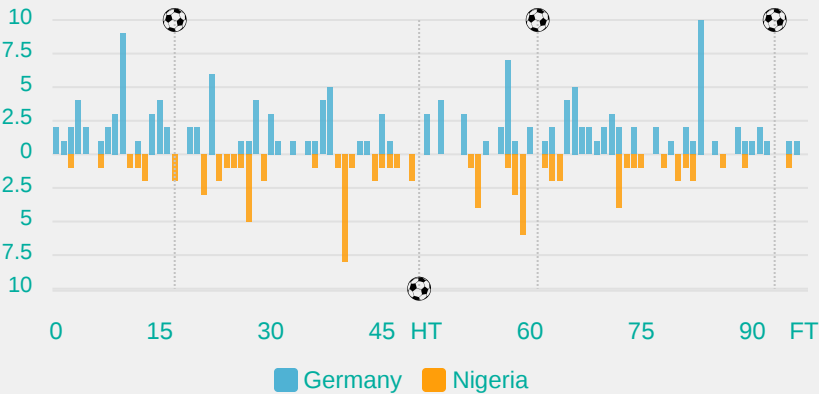
↑ 45'
-  13 MF SZENK Nia
-  14 DF AXTMANN Alina
-  16 MF PLATNER Paulina

↑ 77'
-  18 MF ERNST Sarah

↑ 45'  90+3'
-  19 MF BENDER Loreen



Distribution in the Final Third



STARTING

- ↓ 88'  50'

 BAKARE Shukura GK 1
-  OKWUCHUKWU Chiamaka FW 2
- ↓ 70'

 IMURAN Rofiat DF 6
-  SABASTINE Flourish FW 7
- ↓ 54'

 BELLO Amina MF 8
-  YINA Philomina MF 10
-  OHAEGBULEM Oluchi DF 12
-  OLISE Chioma MF 15
-  ALANI Jumoke DF 17
-  OLADIPO Shukurat DF 18
-  FOLORUNSHO Comfort DF 19

SUBSTITUTES

-  MGBECHI Anderline GK 16
-  OMILANA Faith GK 21
- ↑ 54'

 OSIGWE Goodness FW 3
-  NKPA Lucky FW 4
-  OYINLOLA Shakirat DF 5
- ↑ 88'

 AKEKOROMOWEI Janet FW 9
-  SHOBOWALE Olushola MF 11
-  OLADEJI Oluwabunmi DF 13
- ↑ 70'

 AJAKAYE Opeyemi FW 14
-  IGBOKWE Joy MF 20

Match Summary - Key Statistics

Germany

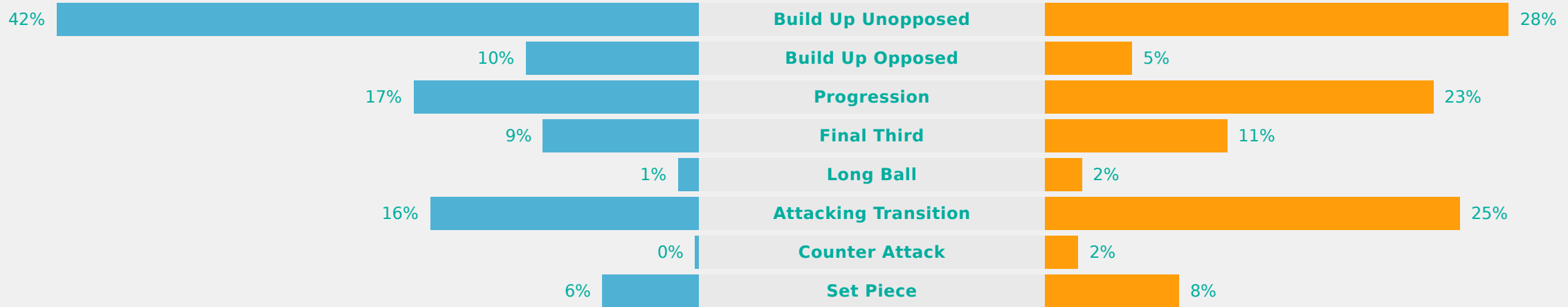
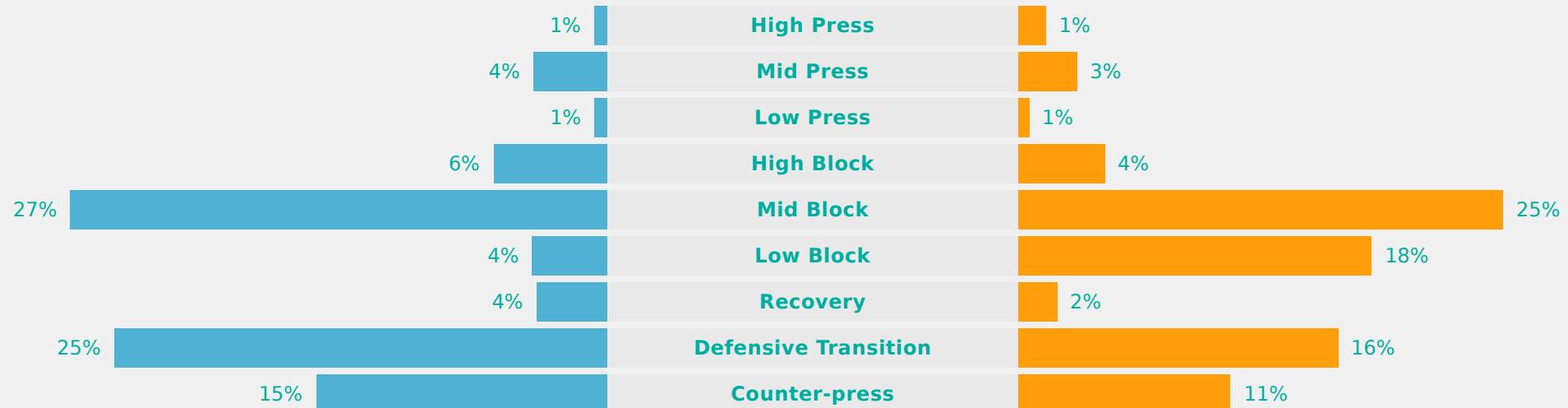
3

1

Nigeria



Possession					
Total	<div><div>53.4%</div><div>12.9%</div><div>33.7%</div></div>		Total		
3	Goals				1
15 (3)	Attempts at Goal (On Target)				9 (6)
538 (459)	Total Passes (Complete)				307 (210)
85 %	Pass Completion %				68 %
107	Completed Line Breaks				58
12	Defensive Line Breaks				6
124	Receptions in the Final Third				58
19	Crosses				14
25	Ball Progressions				6
119 (40)	Defensive Pressures Applied (Direct Pressures)				199 (38)
47	Forced Turnovers				61
89	Second Balls				93
105.6 km	Total Distance Covered				100 km
3.4 km	Zone 4 - Low Speed Sprinting: 20-25 km/h				3.3 km

**Germany****Phases of Play****Nigeria****IN POSSESSION****OUT OF POSSESSION**

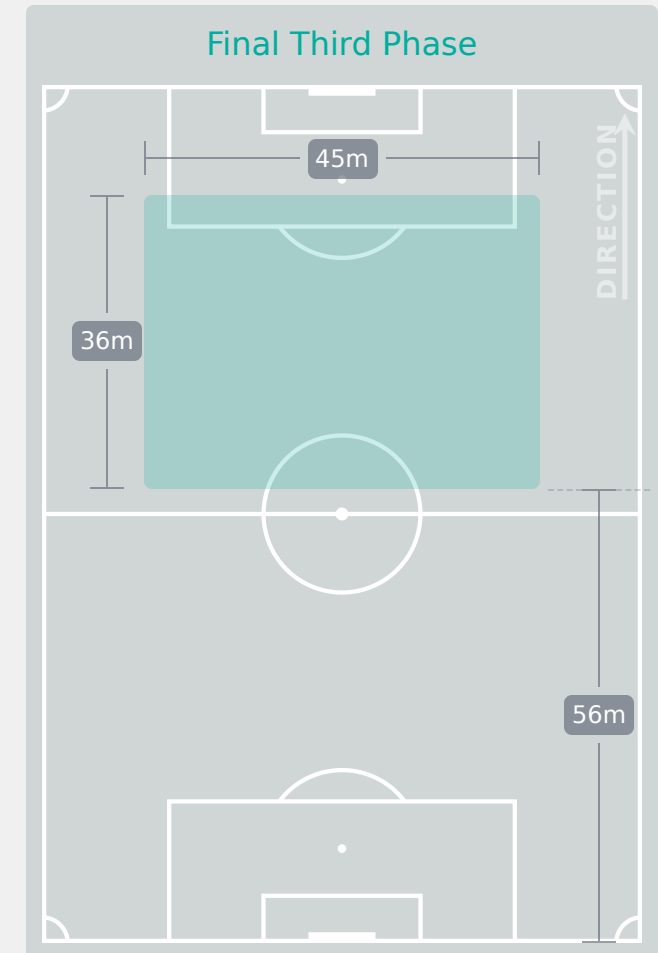
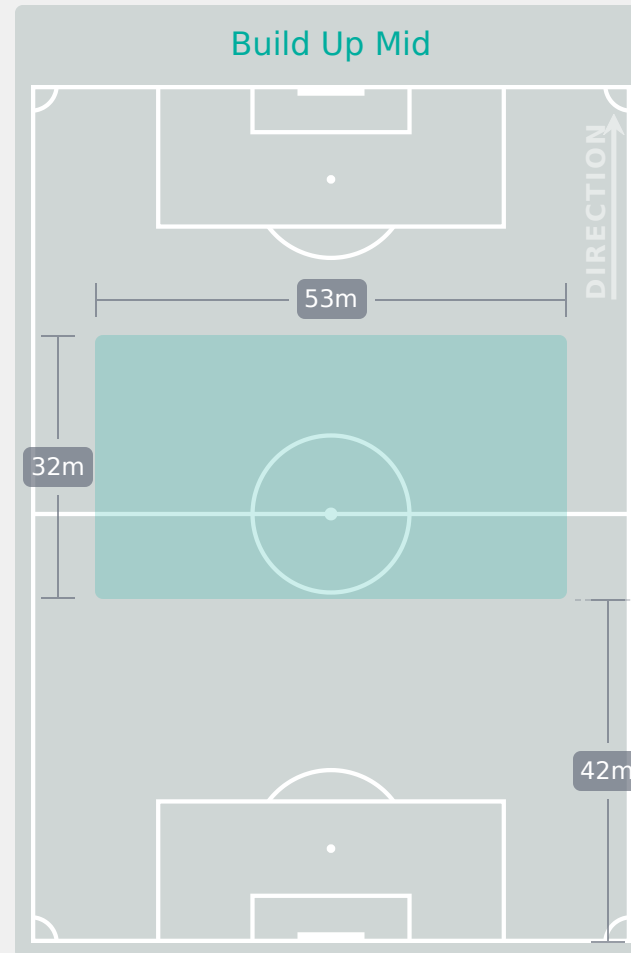
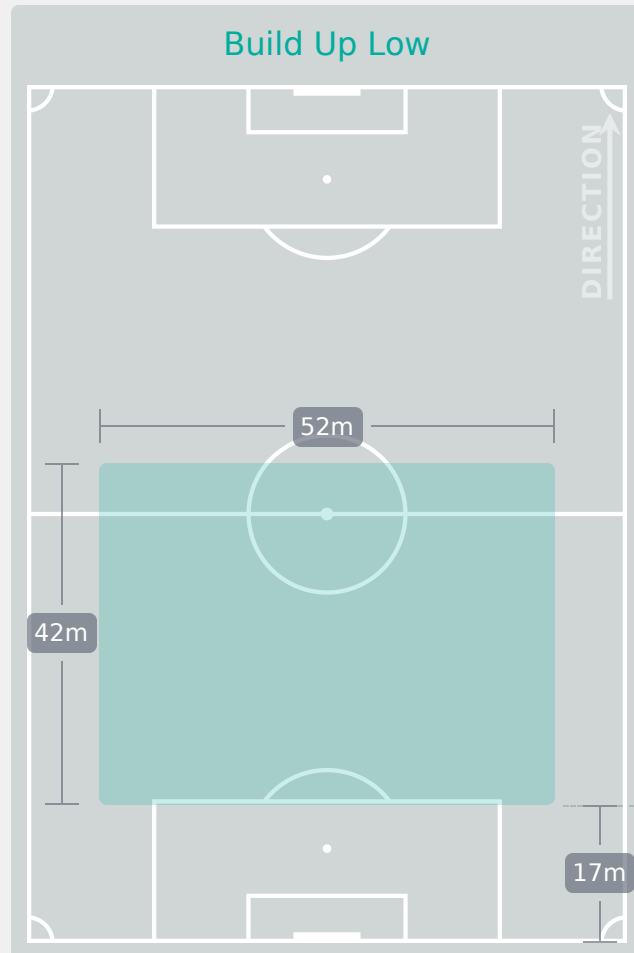


IN POSSESSION

Germany 3 - 1 Nigeria

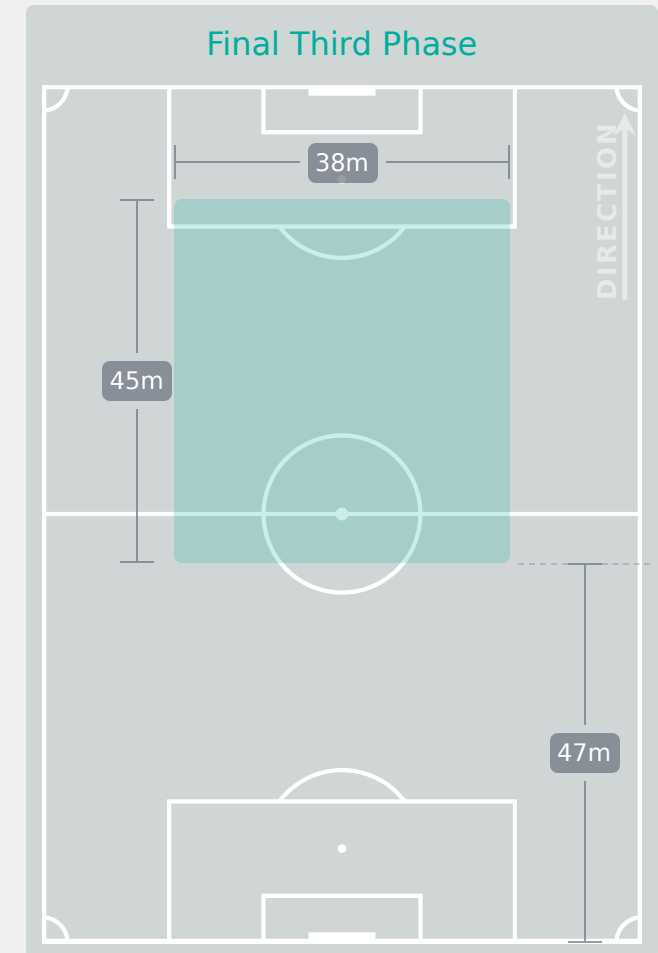
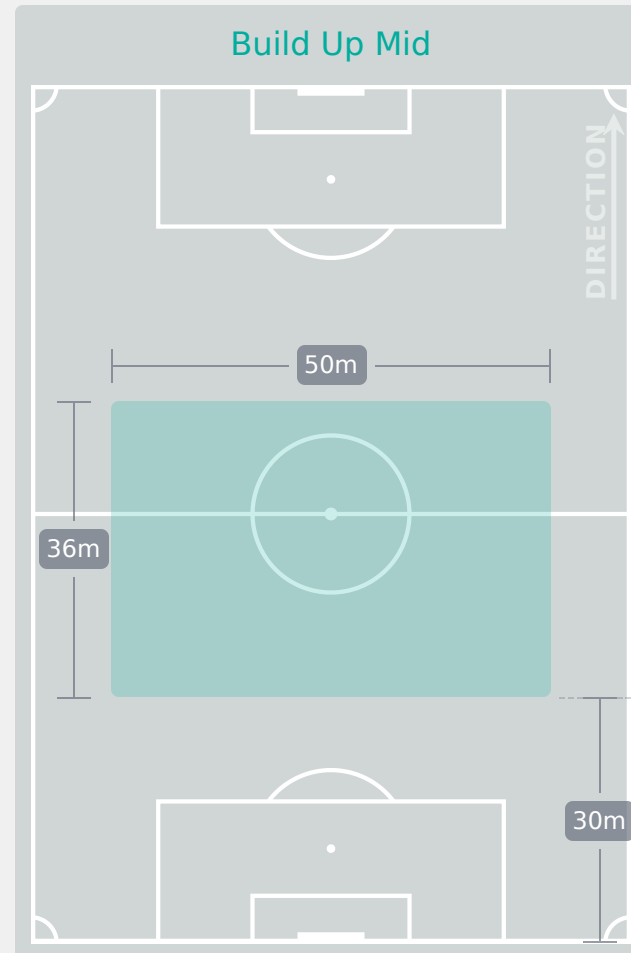
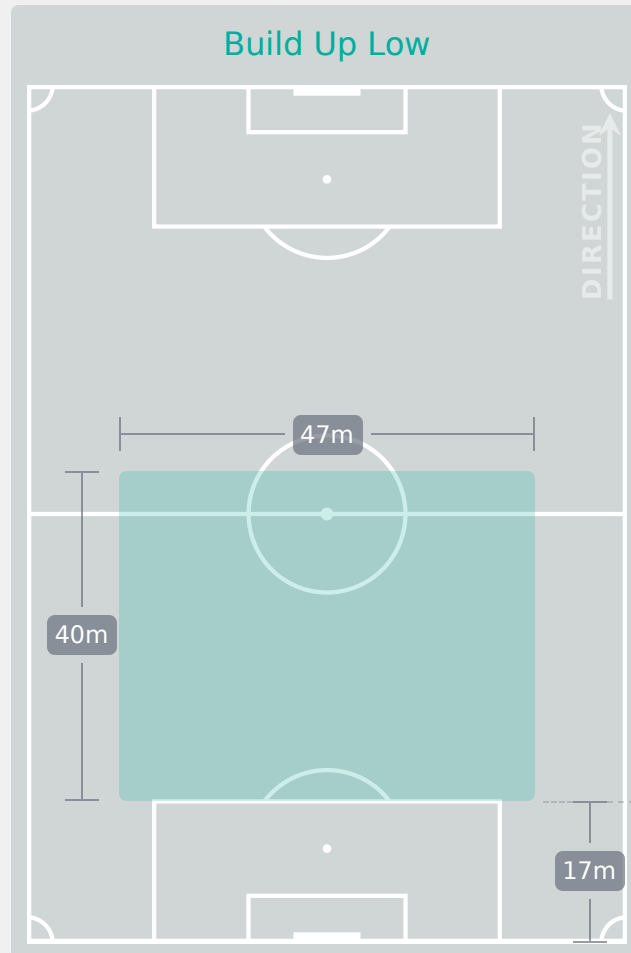
In Possession Line Height & Team Length

Germany 



In Possession Line Height & Team Length

Nigeria 



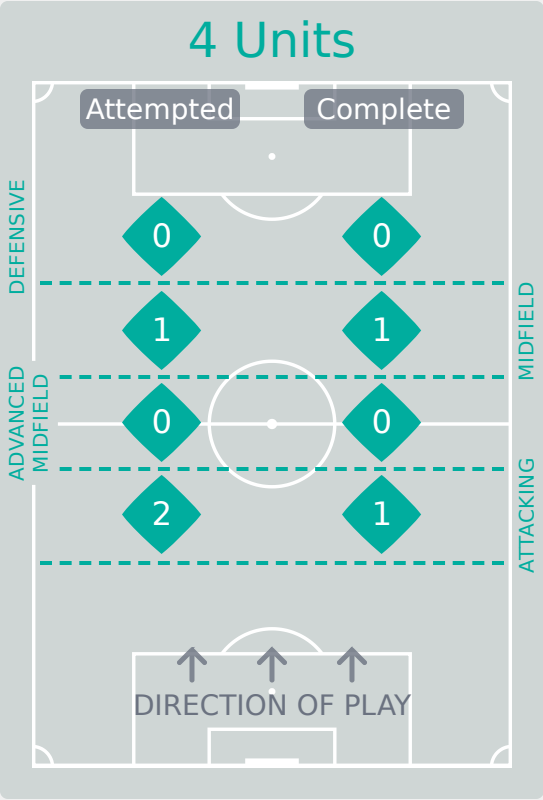
Line Breaks



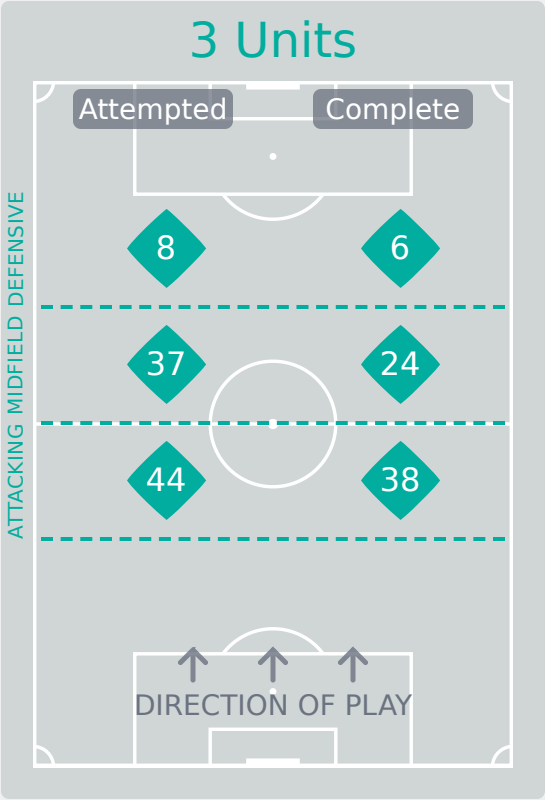
Germany

Attempted Line Breaks

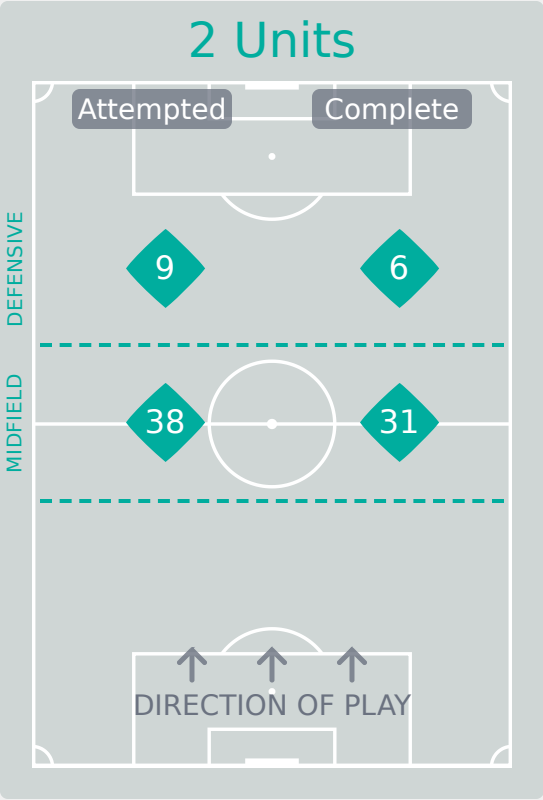
139



Attempted Line Breaks	3
Inside Shape	1
Outside Shape	2



Attempted Line Breaks	89
Inside Shape	50
Outside Shape	39



Attempted Line Breaks	47
Inside Shape	26
Outside Shape	21

Line Breaks



Attempted Line Breaks

112

31
Attempted

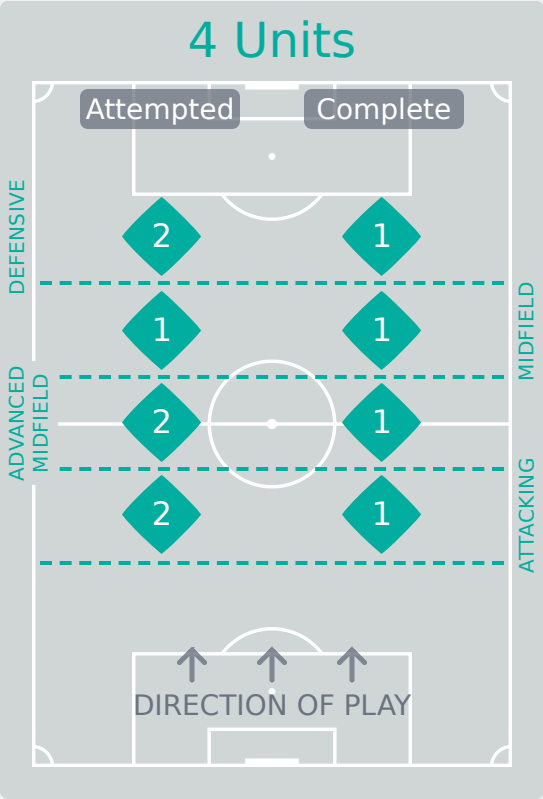
17
Complete

37
Attempted

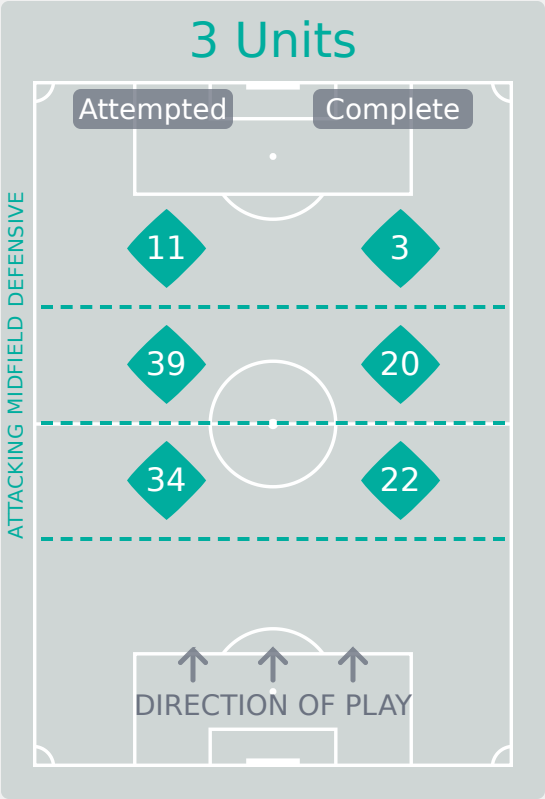
26
Complete

44
Attempted

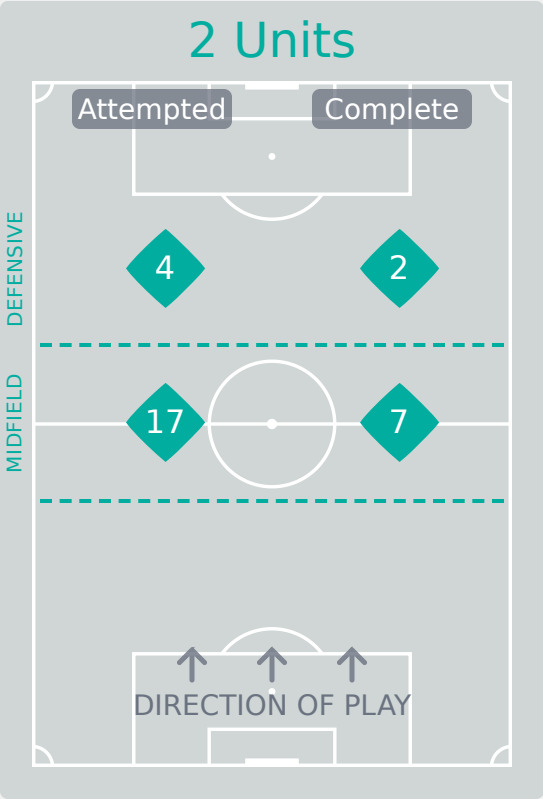
15
Complete



Attempted Line Breaks	7
Inside Shape	5
Outside Shape	2



Attempted Line Breaks	84
Inside Shape	58
Outside Shape	26



Attempted Line Breaks	21
Inside Shape	16
Outside Shape	5

Line Breaks



					4 Units				3 Units			2 Units		Direction			Distribution Type		
#	Player	Line Breaks Attempted	Line Breaks Completed	Line Break Completion %	Attacking Line	Attacking Midfield Line	Midfield Line	Defensive Line	Attacking Line	Midfield Line	Defensive Line	Midfield Line	Defensive Line	Through	Around	Over	Pass	Cross	Ball Progression
1	ADAMCZYK Rebecca	5	4	80%	1	0	1	0	1	1	0	1	0	0	0	5	5	0	0
3	JANZEN Mathilde	0	0	0%	0	0	0	0	0	0	0	0	0	0	0	0	0	0	0
4	VEIT Jella	28	21	75%	0	0	0	0	13	4	0	10	1	6	13	9	28	0	0
5	DIEHM Vanessa	24	20	83%	0	0	0	0	13	5	1	5	0	13	7	4	23	0	1
7	ZICAI Cora	10	7	70%	0	0	0	0	0	2	3	4	1	2	8	0	7	0	3
8	ZDEBEL Sofie	6	5	83%	0	0	0	0	0	0	1	2	3	2	4	0	6	0	0
9	STEINER Marie	6	5	83%	0	0	0	0	0	3	0	3	0	5	0	1	5	0	1
11	BAUM Lisa	1	0	0%	0	0	0	0	0	0	1	0	0	0	0	1	0	1	0
15	SCHNEIDER Tomke	21	15	71%	1	0	0	0	6	9	1	3	1	2	14	5	21	0	0
17	SEHITLER Alara	15	10	67%	0	0	0	0	7	3	0	4	1	5	8	2	13	1	1
20	GLONING Laura	15	14	93%	0	0	0	0	4	6	0	5	0	4	5	6	15	0	0
2	HILS Miriam	1	1	100%	0	0	0	0	0	0	1	0	0	0	1	0	0	0	1
10	NACHTIGALL Sophie	4	2	50%	0	0	0	0	0	2	0	0	2	0	2	2	3	0	1
16	PLATNER Paulina	1	1	100%	0	0	0	0	0	1	0	0	0	1	0	0	1	0	0
18	ERNST Sarah	2	2	100%	0	0	0	0	0	1	0	1	0	0	2	0	2	0	0

					4 Units				3 Units			2 Units		Direction			Distribution Type		
#	Player	Line Breaks Attempted	Line Breaks Completed	Line Break Completion %	Attacking Line	Attacking Midfield Line	Midfield Line	Defensive Line	Attacking Line	Midfield Line	Defensive Line	Midfield Line	Defensive Line	Through	Around	Over	Pass	Cross	Ball Progression
1	BAKARE Shukura	4	2	50%	0	0	0	0	2	1	1	0	0	0	0	4	4	0	0
2	OKWUCHUKWU Chiamaka	4	2	50%	0	0	0	1	0	0	2	0	1	3	0	1	3	0	1
6	IMURAN Rofiat	5	3	60%	0	0	0	0	0	4	1	0	0	2	3	0	4	0	1
7	SABASTINE Flourish	7	5	71%	0	0	0	0	0	3	3	0	1	3	4	0	7	0	0
8	BELLO Amina	2	0	0%	0	0	0	0	0	1	1	0	0	1	1	0	1	0	1
10	YINA Philomina	8	3	38%	0	0	0	0	3	3	1	1	0	5	2	1	8	0	0
12	OHAEGBULEM Oluchi	31	20	65%	0	0	1	0	13	8	1	8	0	7	11	13	31	0	0
15	OLISE Chioma	4	1	25%	0	0	0	0	0	3	0	0	1	2	0	2	3	1	0
17	ALANI Jumoke	19	10	53%	0	0	0	0	9	4	1	5	0	0	6	13	18	1	0
18	OLADIPO Shukurat	11	6	55%	2	2	0	0	2	5	0	0	0	3	3	5	11	0	0
19	FOLORUNSHO Comfort	12	6	50%	0	0	0	1	5	5	0	1	0	1	6	5	12	0	0
3	OSIGWE Goodness	3	0	0%	0	0	0	0	0	1	0	2	0	2	1	0	2	0	1
9	AKEKOROMOWEI Janet	0	0	0%	0	0	0	0	0	0	0	0	0	0	0	0	0	0	0
14	AJAKAYE Opeyemi	2	0	0%	0	0	0	0	0	1	0	0	1	2	0	0	1	1	0

Passing Networks



#	Passes From ↓ to →	ADAMCZYK Rebecca	JANZEN Mathilde	VEIT Jella	DIEHM Vanessa	ZICAI Cora	ZDEBEL Sofie	STEINER Marie	BAUM Lisa	SCHNEIDER Tomke	SEHITLER Alara	GLONING Laura	HILS Miriam	NACHTIGALL Sophie	PLATNER Paulina	ERNST Sarah
1	ADAMCZYK Rebecca		0	12	12	0	1	0	0	1	0	0	0	1	0	1
3	JANZEN Mathilde	0		2	2	1	0	0	0	3	0	3	0	0	0	0
4	VEIT Jella	4	3		26	3	5	2	3	14	9	2	0	2	0	0
5	DIEHM Vanessa	4	4	29		5	9	4	1	3	11	19	0	5	1	2
7	ZICAI Cora	0	0	1	5		3	1	0	0	0	5	0	6	0	0
8	ZDEBEL Sofie	0	1	4	8	2		3	1	3	4	2	0	2	0	3
9	STEINER Marie	0	2	0	2	5	1		3	0	2	1	0	0	0	0
11	BAUM Lisa	0	0	1	0	0	0	0		0	1	1	0	0	0	0
15	SCHNEIDER Tomke	0	0	11	5	2	6	0	2		2	0	0	7	0	4
17	SEHITLER Alara	1	0	5	10	3	5	2	1	4		3	0	1	0	1
20	GLONING Laura	1	1	4	17	10	3	2	1	0	4		0	0	0	0
2	HILS Miriam	0	0	0	0	0	0	0	0	0	0	0		0	1	0
10	NACHTIGALL Sophie	0	0	4	2	3	6	0	0	3	1	2	0		0	0
16	PLATNER Paulina	0	0	0	0	1	0	0	0	1	0	0	0	0		0
18	ERNST Sarah	0	0	0	0	0	5	1	0	2	1	0	0	2	1	

Top 5 Player to Player Passers		
Player	Passed To	% of Total Team Passes
DIEHM Vanessa	VEIT Jella	6.7%
VEIT Jella	DIEHM Vanessa	6%
DIEHM Vanessa	GLONING Laura	4.4%
GLONING Laura	DIEHM Vanessa	3.9%
VEIT Jella	SCHNEIDER Tomke	3.2%

Passing Networks

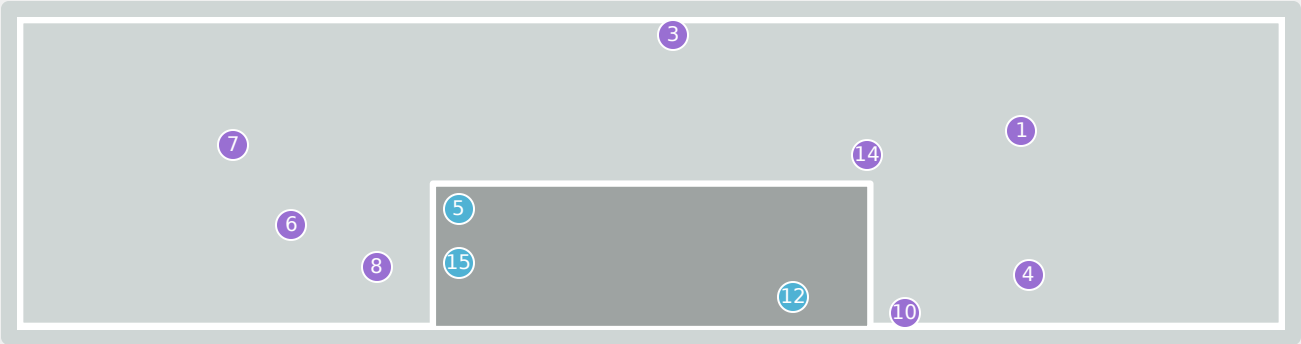
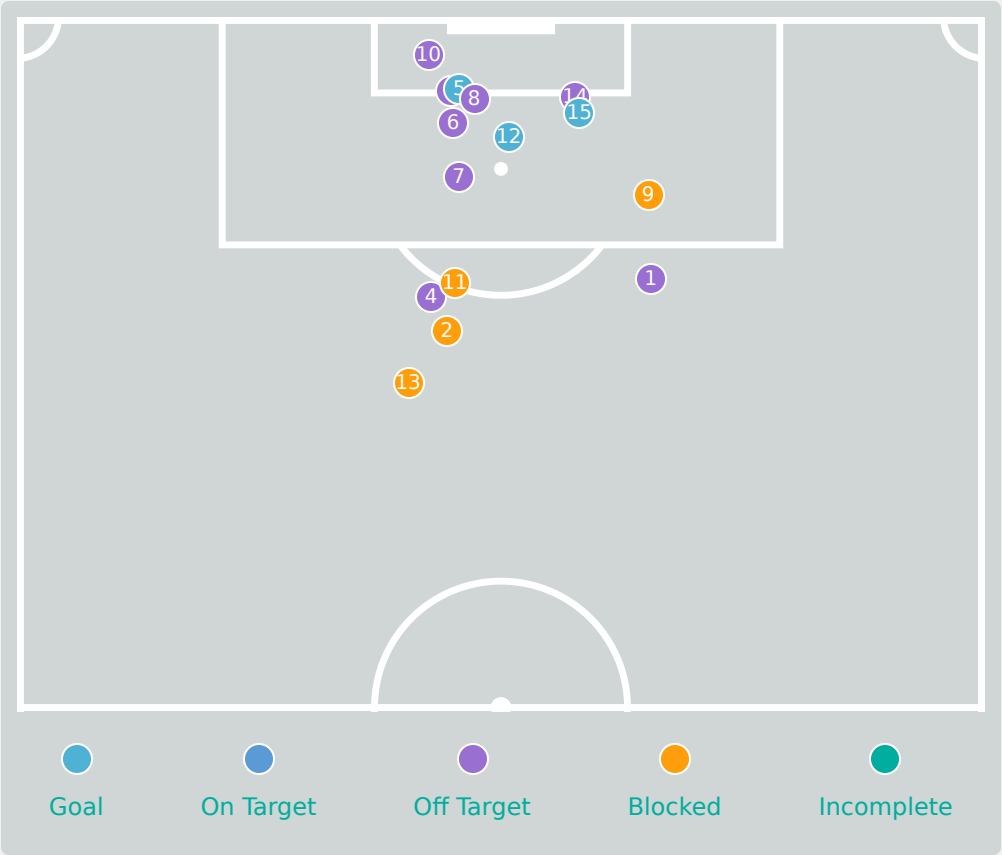


#	Passes From ↓ to →	BAKARE Shukura	OKWUCHUKWU Chiamaka	IMURAN Rofiat	SABASTINE Flourish	BELLO Amina	YINA Philomina	OHAEGBULEM Oluchi	OLISE Chioma	ALANI Jumoke	OLADIPO Shukurat	FOLORUNSHO Comfort	OSIGWE Goodness	AKEKOROMOWEI Janet	AJAKAYE Opeyemi
1	BAKARE Shukura		0	0	0	0	0	2	0	0	7	8	0	0	0
2	OKWUCHUKWU Chiamaka	0		1	0	0	4	1	0	1	0	0	0	0	0
6	IMURAN Rofiat	0	0		0	0	3	8	2	0	0	1	1	0	0
7	SABASTINE Flourish	0	3	0		0	3	1	0	4	1	0	1	0	0
8	BELLO Amina	0	0	1	1		0	0	0	3	0	0	0	0	0
10	YINA Philomina	0	1	2	1	0		8	1	14	2	0	0	0	0
12	OHAEGBULEM Oluchi	0	3	7	4	0	7		4	0	0	4	0	0	0
15	OLISE Chioma	0	1	3	1	0	0	5		0	0	1	0	0	0
17	ALANI Jumoke	1	2	0	6	2	4	0	1		5	3	2	0	0
18	OLADIPO Shukurat	0	2	0	1	0	3	0	0	8		5	1	0	0
19	FOLORUNSHO Comfort	4	0	6	0	0	4	8	0	0	0		0	0	0
3	OSIGWE Goodness	0	0	0	0	0	0	0	0	1	0	1		0	0
9	AKEKOROMOWEI Janet	0	0	0	0	0	1	0	0	0	0	0	0		0
14	AJAKAYE Opeyemi	0	0	0	0	0	0	1	0	0	0	0	0	0	

Top 5 Player to Player Passers		
Player	Passed To	% of Total Team Passes
YINA Philomina	ALANI Jumoke	7.1%
BAKARE Shukura	FOLORUNSHO Comfort	4%
IMURAN Rofiat	OHAEGBULEM Oluchi	4%
YINA Philomina	OHAEGBULEM Oluchi	4%

OLADIPO Shukurat	ALANI Jumoke	4%
------------------	--------------	----

Attempts at Goal



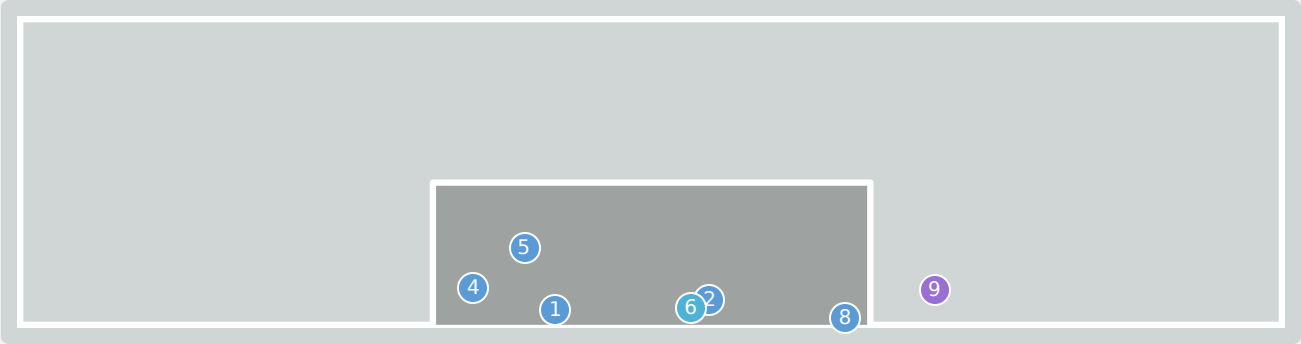
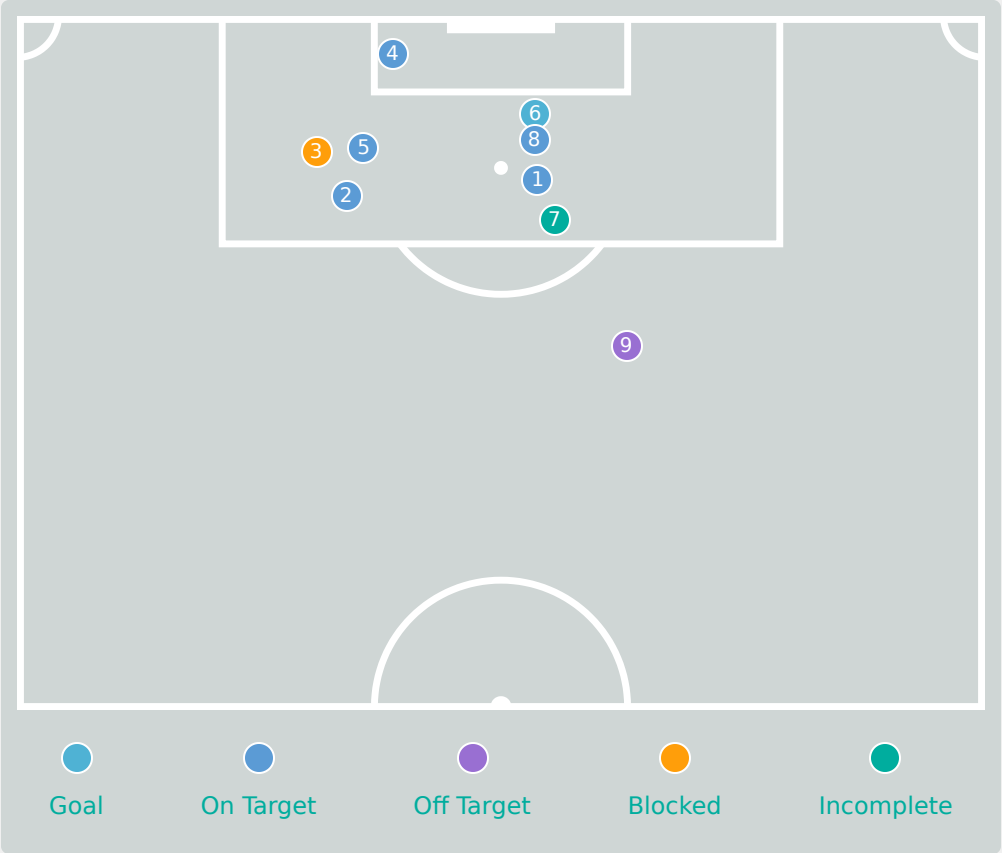
Key	Outcome	Shots
●	Goals	3
●	On Target	0
●	Off Target	8
●	Blocked	4
●	Incomplete	0

Attempts at Goal



Time	Player	Outcome	Body Part	Delivery Type
4	20 GLONING Laura	Deflected Off Target - Defensive Event	Right Foot	Loose Ball
5	20 GLONING Laura	Incomplete - Blocked	Right Foot	Loose Ball
9	9 STEINER Marie	Off Target	Right Foot	Pass
15	11 BAUM Lisa	Deflected Off Target - Defensive Event	Right Foot	Pass
16	17 SEHITLER Alara	On Target - Goal	Head	Cross
28	9 STEINER Marie	Off Target	Head	Cross
30	7 ZICAI Cora	Deflected Off Target - Defensive Event	Right Foot	Loose Ball
31	4 VEIT Jella	Off Target	Upper Body	Loose Ball
36	17 SEHITLER Alara	Incomplete - Blocked	Right Foot	Freekick
36	11 BAUM Lisa	Off Target	Left Foot	Cross
38	15 SCHNEIDER Tomke	Incomplete - Blocked	Right Foot	Pass
60	8 ZDEBEL Sofie	On Target - Goal	Left Foot	Cross
70	17 SEHITLER Alara	Incomplete - Blocked	Right Foot	Loose Ball
74	7 ZICAI Cora	Off Target	Head	Cross
92	18 ERNST Sarah	On Target - Goal	Head	Cross

Attempts at Goal



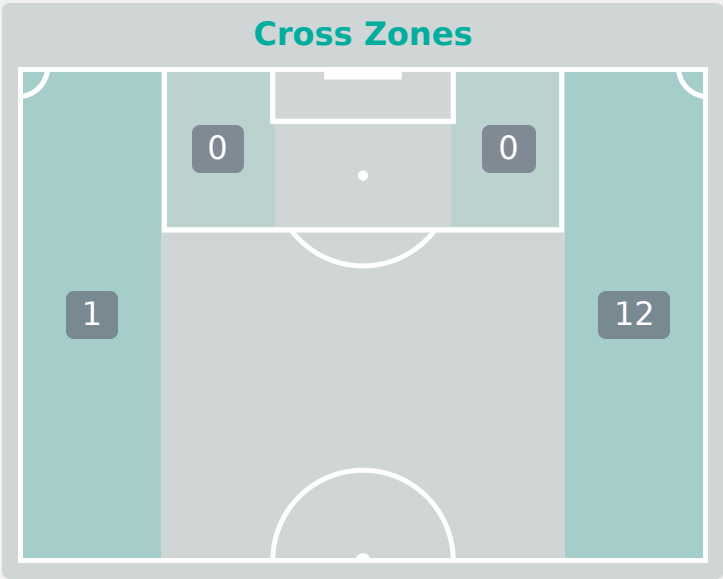
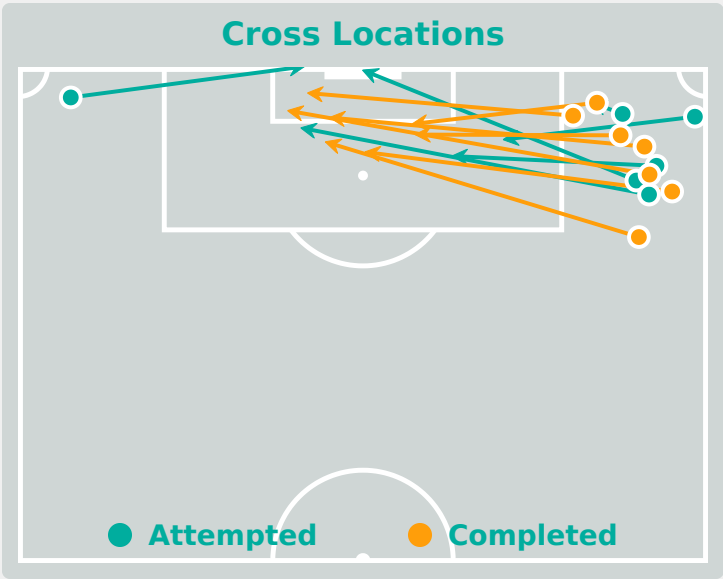
Key	Outcome	Shots
●	Goals	1
●	On Target	5
●	Off Target	1
●	Blocked	1
●	Incomplete	1

Attempts at Goal

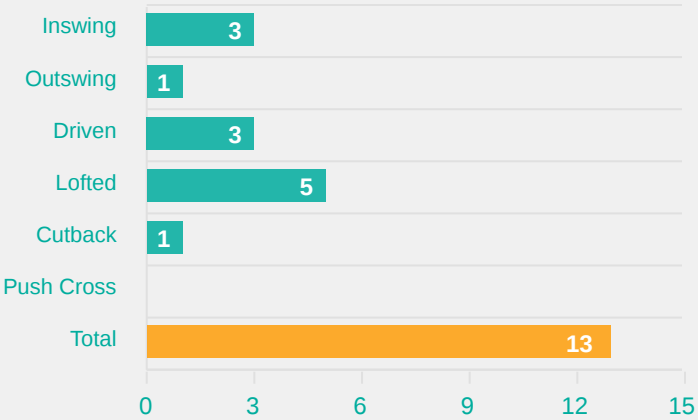


Time	Player	Outcome	Body Part	Delivery Type
1	2 OKWUCHUKWU Chiamaka	On Target - Saved	Right Foot	Ball Progression
18	2 OKWUCHUKWU Chiamaka	On Target - Saved	Left Foot	Loose Ball
21	7 SABASTINE Flourish	Incomplete - Blocked	Right Foot	Pass
21	6 IMURAN Rofiat	On Target - Saved	Left Foot	Loose Ball
46	6 IMURAN Rofiat	On Target - Saved	Left Foot	Pass
49	2 OKWUCHUKWU Chiamaka	On Target - Goal	Right Foot	Loose Ball
64	19 FOLORUNSHO Comfort	Incomplete - Player On Ball Error	Left Foot	Other
82	2 OKWUCHUKWU Chiamaka	Deflected On Target - Saved	Right Foot	Cross
95	3 OSIGWE Goodness	Off Target	Right Foot	Loose Ball

Crosses (Open Play)



Delivery Type



Attempted

13

Completed

7

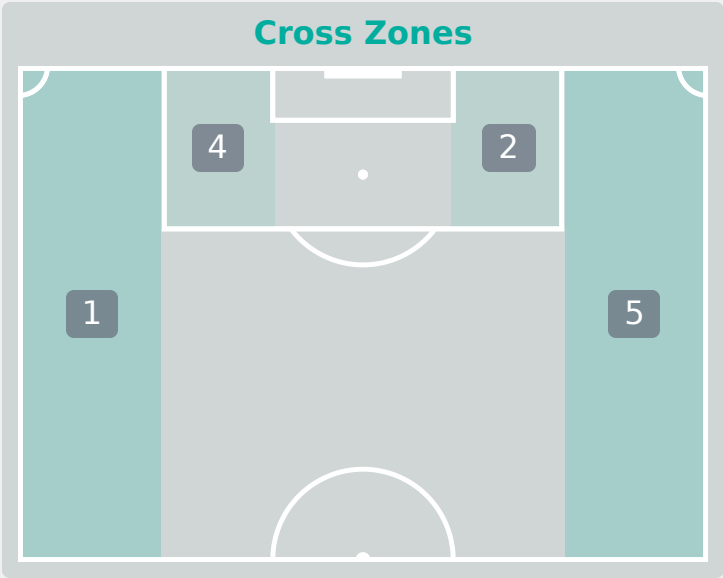
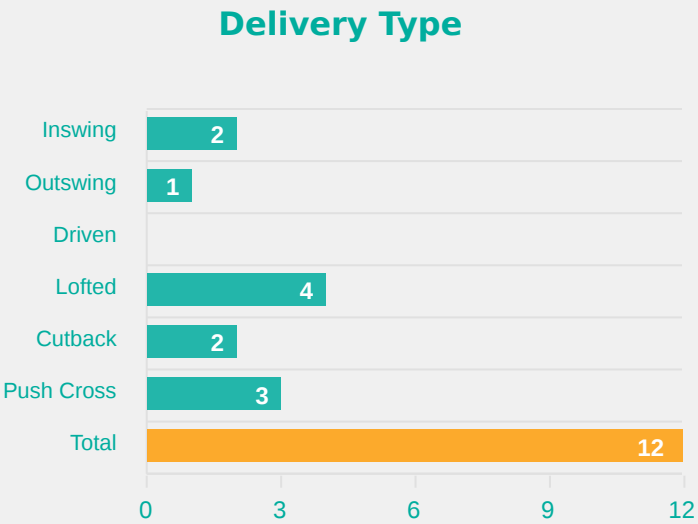
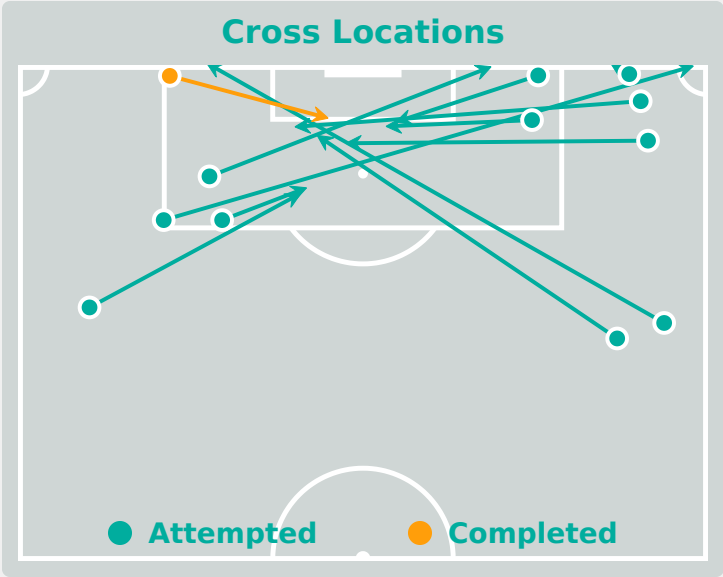
Most Crosses Attempted

4

ZICAI Cora
RIGHT WINGER

#	Player	Inswing	Outswing	Driven	Lofted	Cutback	Push Cross	Total Attempted
1	ADAMCZYK Rebecca	0	0	0	0	0	0	0
3	JANZEN Mathilde	0	0	0	0	0	0	0
4	VEIT Jella	0	0	0	0	0	0	0
5	DIEHM Vanessa	0	0	0	0	0	0	0
7	ZICAI Cora	2	0	1	1	0	0	4
8	ZDEBEL Sofie	0	0	1	0	1	0	2
9	STEINER Marie	0	0	0	0	0	0	0
11	BAUM Lisa	0	0	0	2	0	0	2
15	SCHNEIDER Tomke	0	0	0	0	0	0	0
17	SEHITLER Alara	1	0	0	0	0	0	1
20	GLONING Laura	0	1	0	0	0	0	1
2	HILS Miriam	0	0	1	0	0	0	1
10	NACHTIGALL Sophie	0	0	0	2	0	0	2
16	PLATNER Paulina	0	0	0	0	0	0	0
18	ERNST Sarah	0	0	0	0	0	0	0

Crosses (Open Play)



#	Player	Inswing	Outswing	Driven	Lofted	Cutback	Push Cross	Total Attempted
1	BAKARE Shukura	0	0	0	0	0	0	0
2	OKWUCHUKWU Chiamaka	0	1	0	1	0	1	3
6	IMURAN Rofiat	0	0	0	0	0	2	2
7	SABASTINE Flourish	0	0	0	0	0	0	0
8	BELLO Amina	0	0	0	0	0	0	0
10	YINA Philomina	0	0	0	0	0	0	0
12	OHAEGBULEM Oluchi	0	0	0	0	0	0	0
15	OLISE Chioma	1	0	0	0	0	0	1
17	ALANI Jumoke	0	0	0	2	0	0	2
18	OLADIPO Shukurat	0	0	0	0	0	0	0
19	FOLORUNSHO Comfort	0	0	0	0	0	0	0
3	OSIGWE Goodness	0	0	0	1	2	0	3
9	AKEKOROMOWEI Janet	0	0	0	0	0	0	0
14	AJAKAYE Opeyemi	1	0	0	0	0	0	1

Offering to Receive

287

Total Offers Made

116

Total Offers Received

Most Offers

50

ZICAI Cora

RIGHT WINGER

125

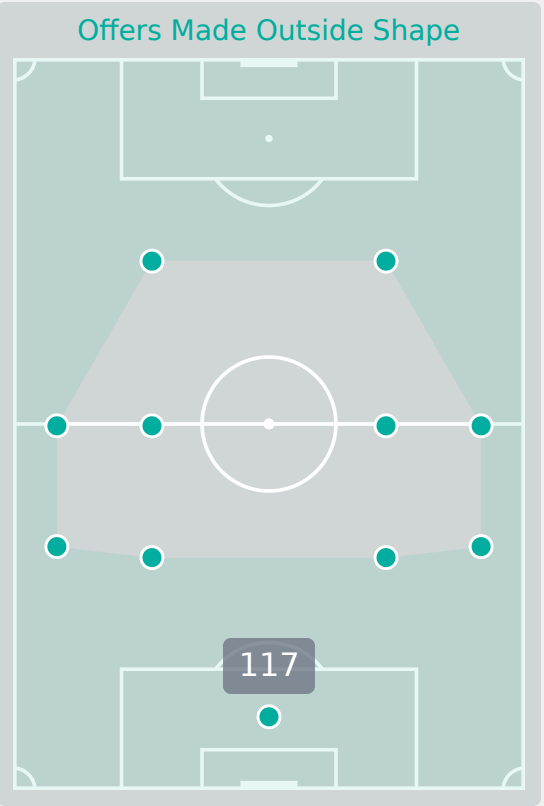
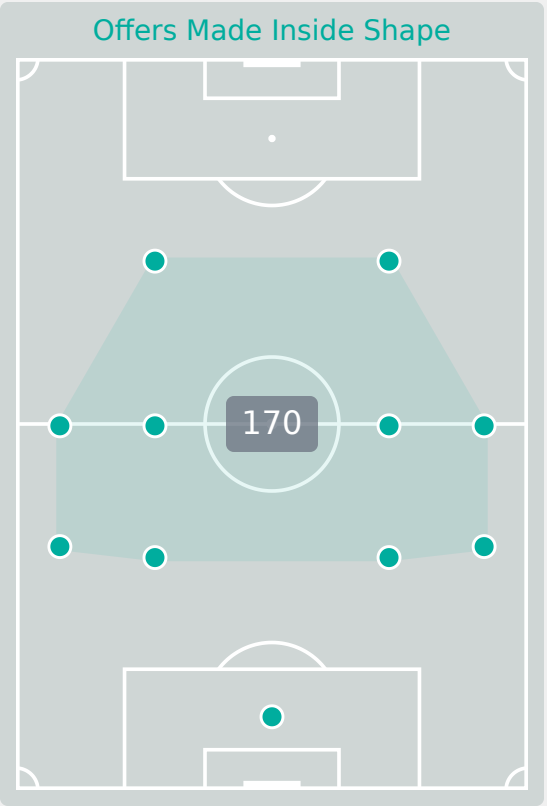
Offers Made in Final Third

148

Offers Made in Middle Third

14

Offers Made in Defensive Third



Germany

#	Player	Offers Made	Offers Received	% Made & Received
1	ADAMCZYK Rebecca	1	0	0%
3	JANZEN Mathilde	18	6	33.3%
4	VEIT Jella	2	1	50%
5	DIEHM Vanessa	8	6	75%
7	ZICAI Cora	50	16	32%
8	ZDEBEL Sofie	49	23	46.9%
9	STEINER Marie	24	7	29.2%
11	BAUM Lisa	9	5	55.6%
15	SCHNEIDER Tomke	2	2	100%
17	SEHITLER Alara	43	14	32.6%
20	GLONING Laura	32	17	53.1%
2	HILS Miriam	4	0	0%
10	NACHTIGALL Sophie	26	14	53.8%
16	PLATNER Paulina	5	1	20%
18	ERNST Sarah	14	4	28.6%

Offering to Receive



134

Total Offers Made

43

Total Offers Received

Most Offers

26

SABASTINE Flourish

RIGHT MIDFIELD

52

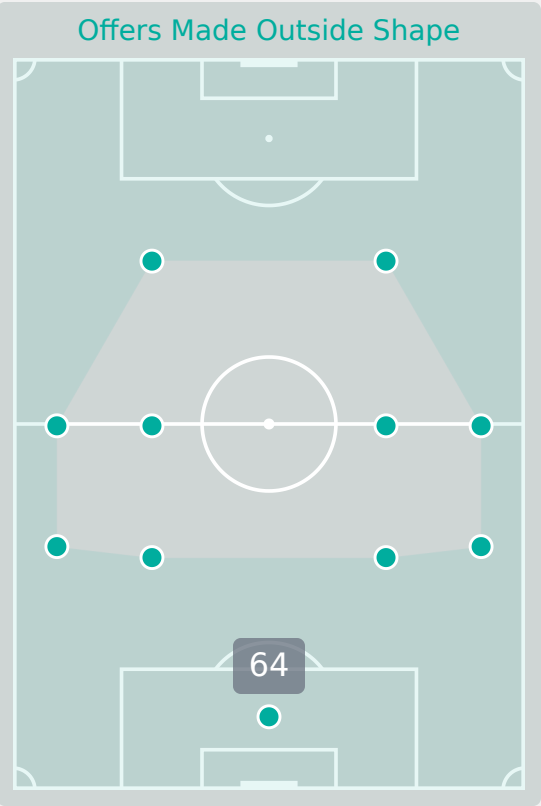
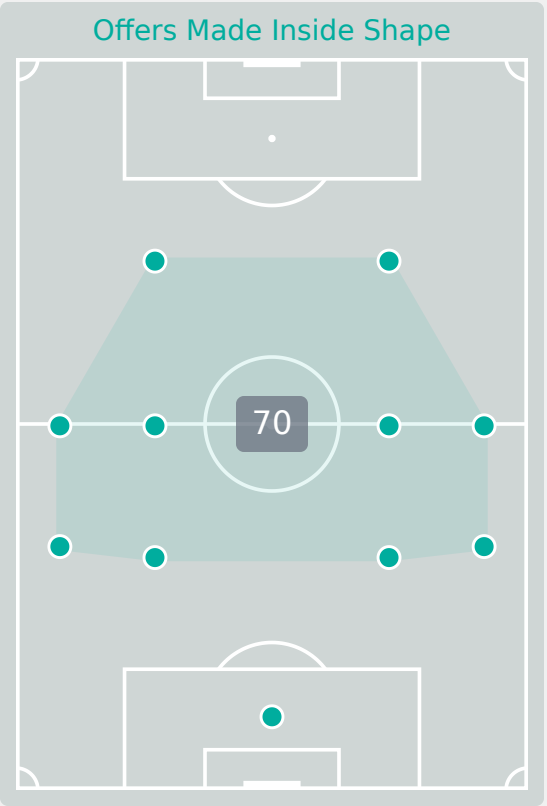
Offers Made in Final Third

52

Offers Made in Middle Third

30

Offers Made in Defensive Third



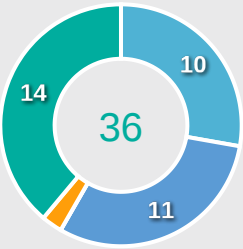
#	Player	Offers Made	Offers Received	% Made & Received
1	BAKARE Shukura	2	1	50%
2	OKWUCHUKWU Chiamaka	17	5	29.4%
6	IMURAN Rofiat	11	1	9.1%
7	SABASTINE Flourish	26	4	15.4%
8	BELLO Amina	12	2	16.7%
10	YINA Philomina	24	9	37.5%
12	OHAEGBULEM Oluchi	2	2	100%
15	OLISE Chioma	8	3	37.5%
17	ALANI Jumoke	14	12	85.7%
18	OLADIPO Shukurat	4	1	25%
19	OLORUNSHO Comfort	1	0	0%
3	OSIGWE Goodness	7	2	28.6%
9	AKEKOROMOWEI Janet	1	0	0%
14	AJAKAYE Opeyemi	5	1	20%

Movement to Receive

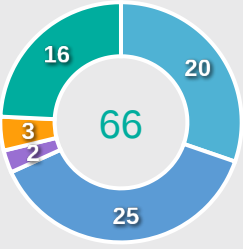


Movement Types by Phase

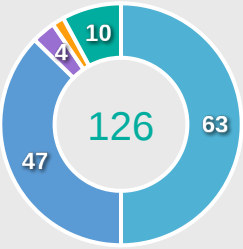
Final Third Phase



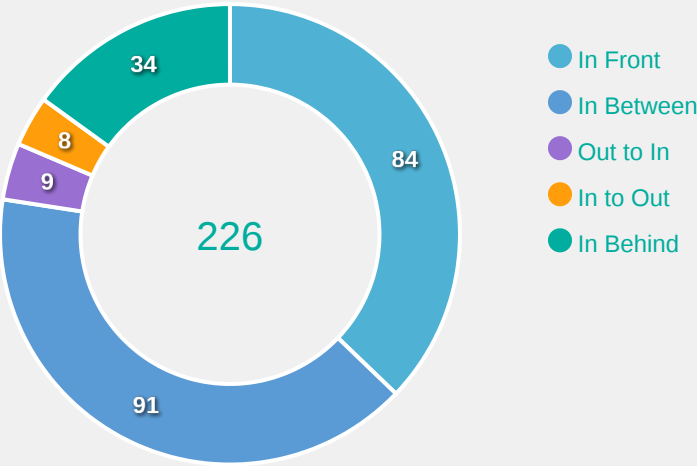
Progression Phase



Build Up Phase



All Movement Types

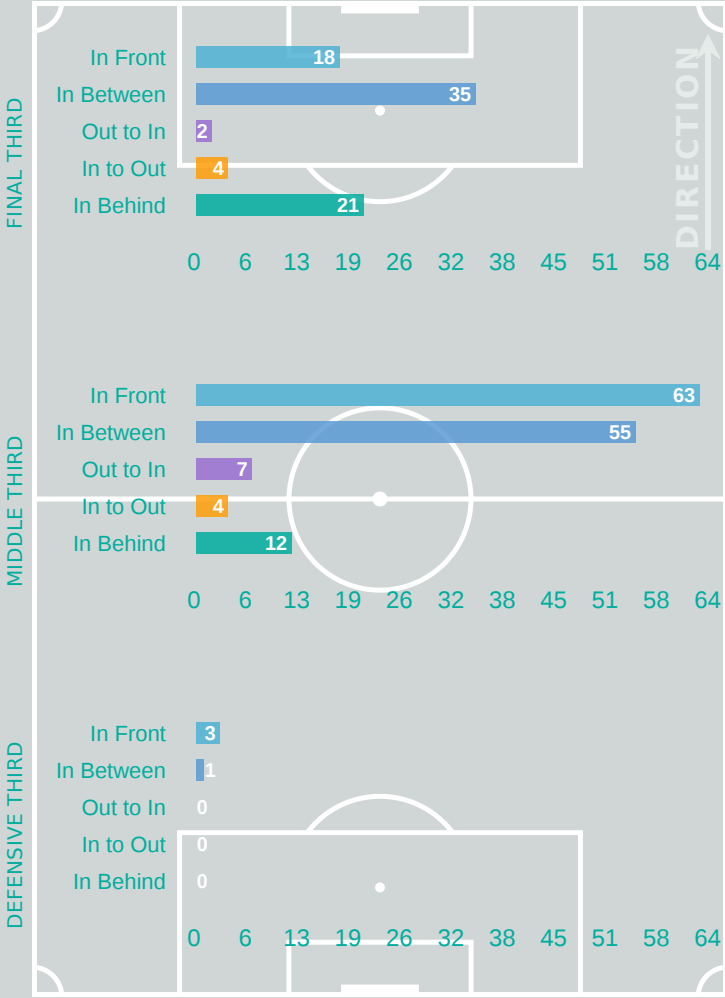


- In Front
- In Between
- Out to In
- In to Out
- In Behind

Top Ranked Players

Type	Player	Movements
In Front	20 GLONING Laura	20
In Between	8 ZDEBEL Sofie	19
Out to In	7 ZICAI Cora	3
In to Out	8 ZDEBEL Sofie	4
In Behind	7 ZICAI Cora	7

Movement Types Pitch Third

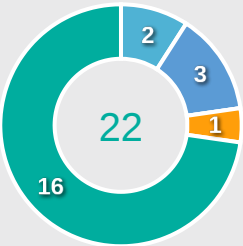


Movement to Receive

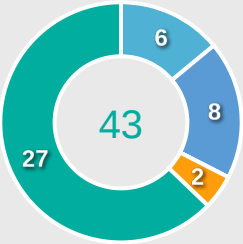


Movement Types by Phase

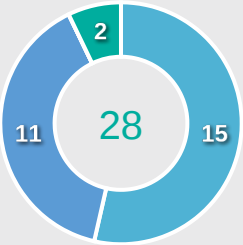
Final Third Phase



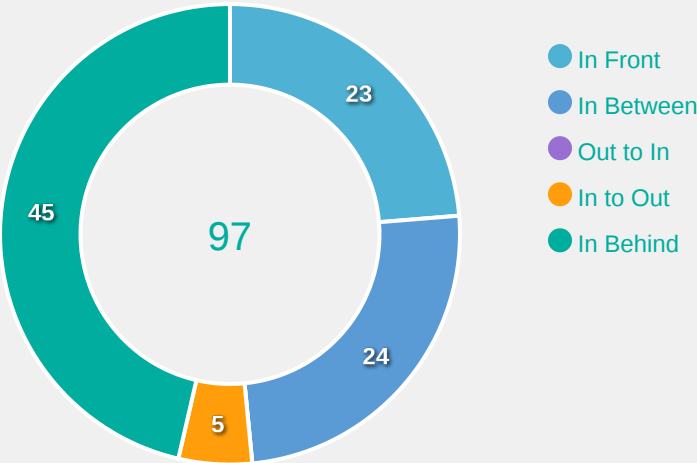
Progression Phase



Build Up Phase



All Movement Types

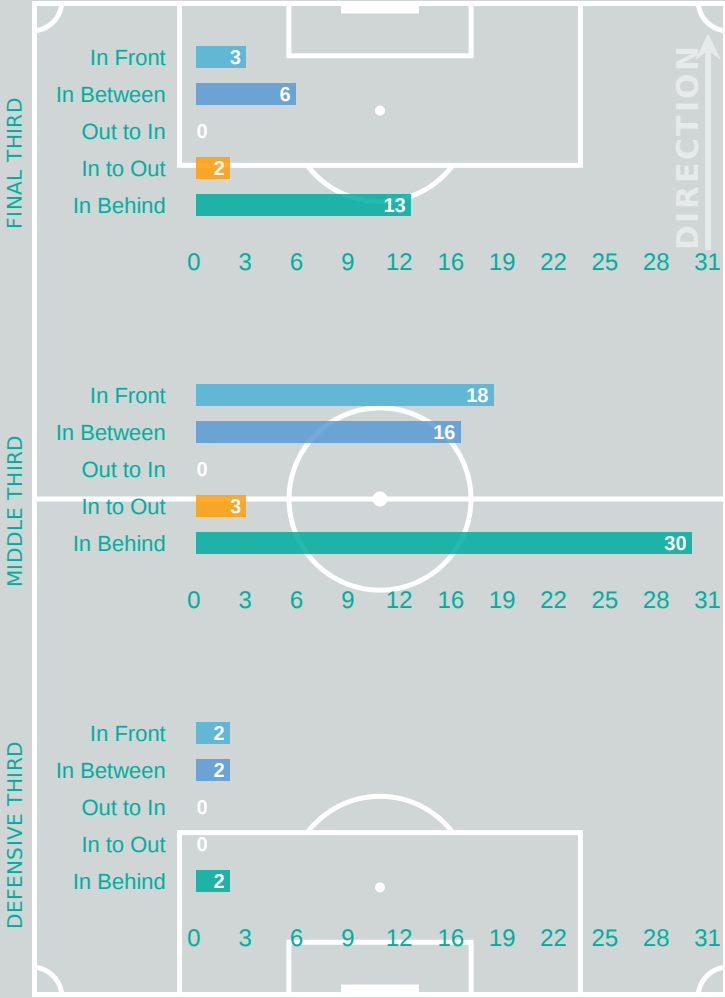


- In Front
- In Between
- Out to In
- In to Out
- In Behind

Top Ranked Players

Type	Player	Movements
In Front	10 YINA Philomina	14
In Between	8 BELLO Amina	5
Out to In	1 BAKARE Shukura	0
In to Out	6 IMURAN Rofiat	2
In Behind	2 OKWUCHUKWU Chiamaka	16

Movement Types Pitch Third





OUT OF POSSESSION

Germany 3 - 1 Nigeria

Defensive Actions

47

Forced Turnovers

54

Possession Regained

5

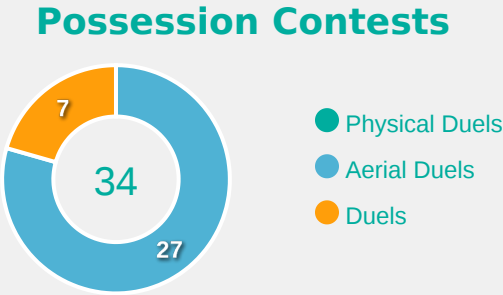
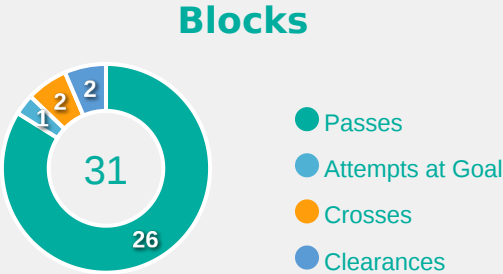
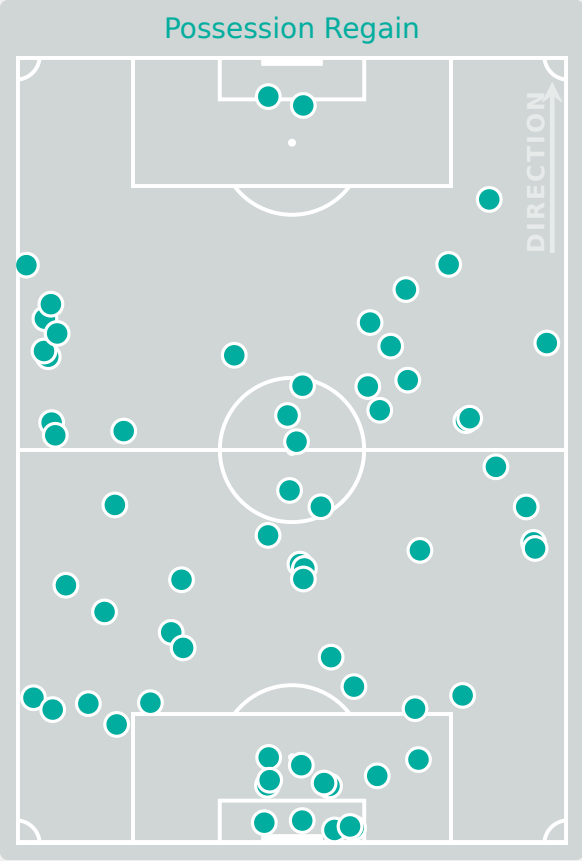
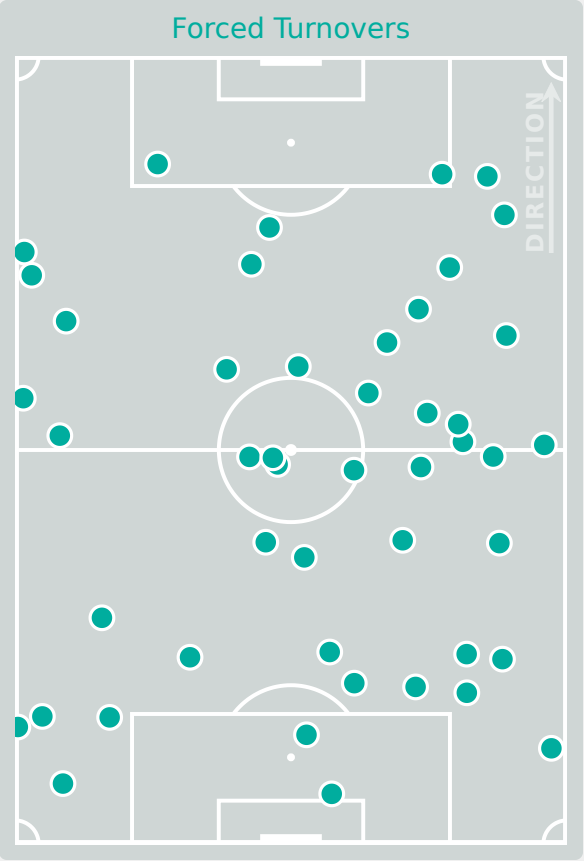
Interceptions

33

Tackles

4.93

Possession Actions / Defensive Action



Most Possession Regains

8

SCHNEIDER Tomke

LEFT BACK

Germany

#	Player	Total Possession Regains
1	ADAMCZYK Rebecca	6
3	JANZEN Mathilde	7
4	VEIT Jella	4
5	DIEHM Vanessa	3
7	ZICAI Cora	5
8	ZDEBEL Sofie	5
9	STEINER Marie	1
11	BAUM Lisa	1
15	SCHNEIDER Tomke	8
17	SEHITLER Alara	6
20	GLONING Laura	5
2	HILS Miriam	1
10	NACHTIGALL Sophie	2
16	PLATNER Paulina	0
18	ERNST Sarah	0

Defensive Actions

61

Forced Turnovers

54

Possession Regained

4

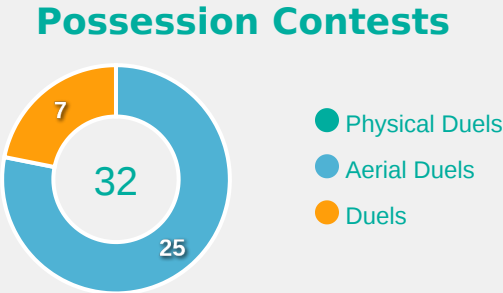
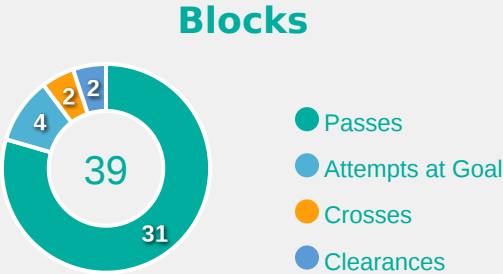
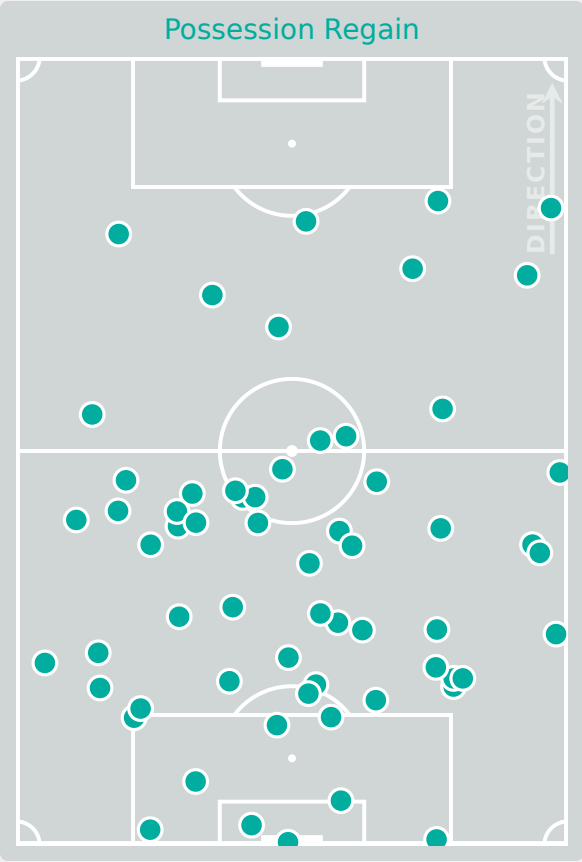
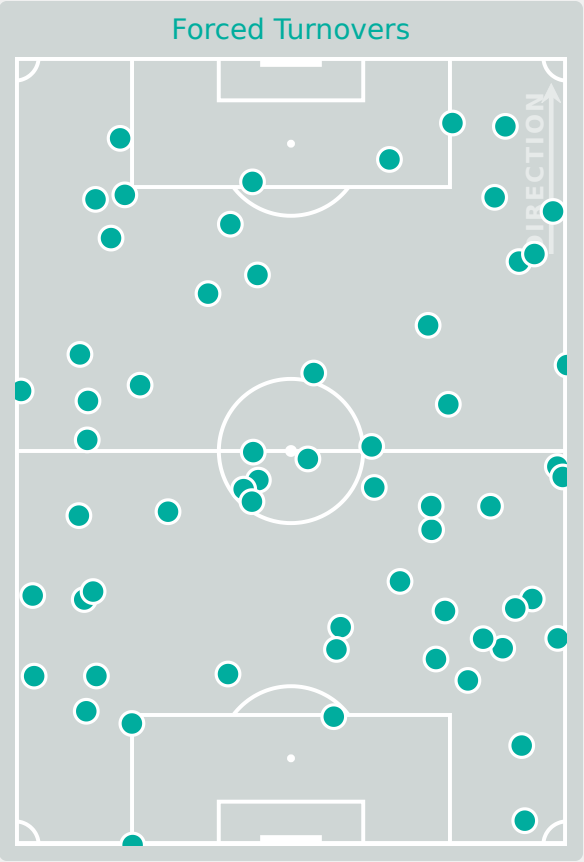
Interceptions

43

Tackles

2.13

Possession Actions / Defensive Action



Most Possession Regains

8

OLADIPO Shukurat

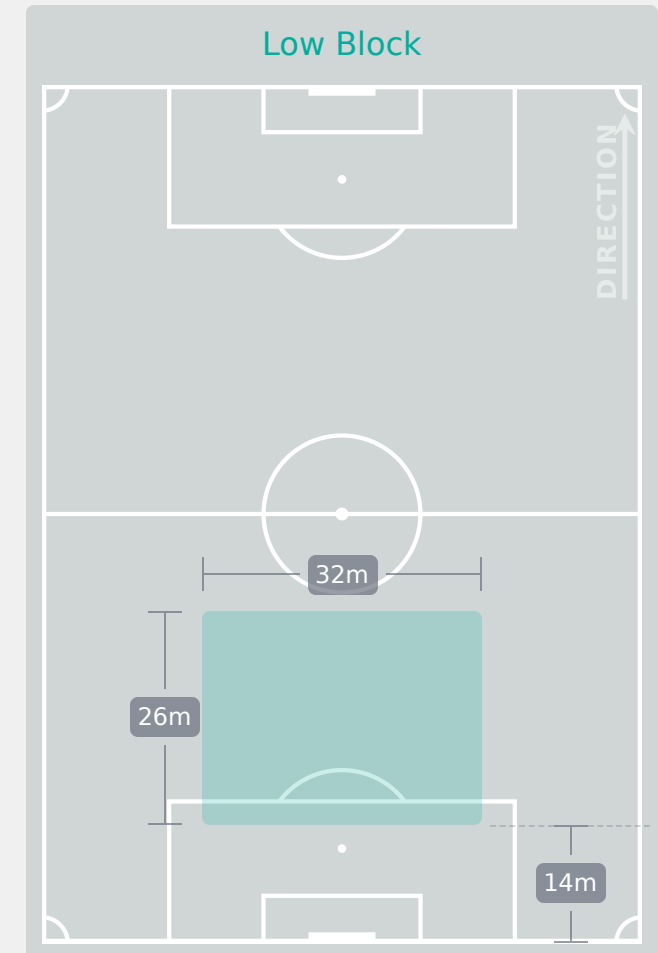
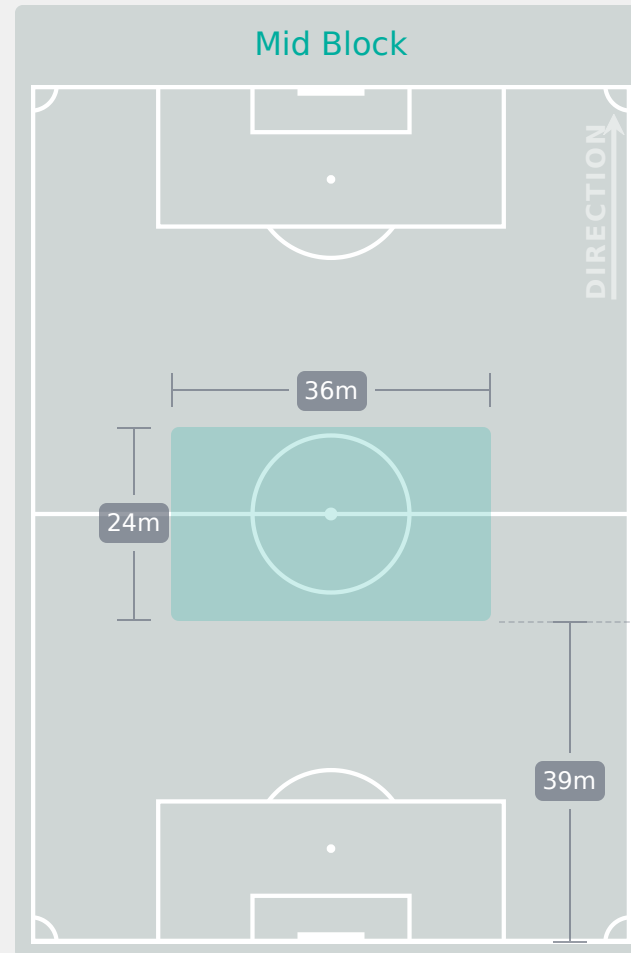
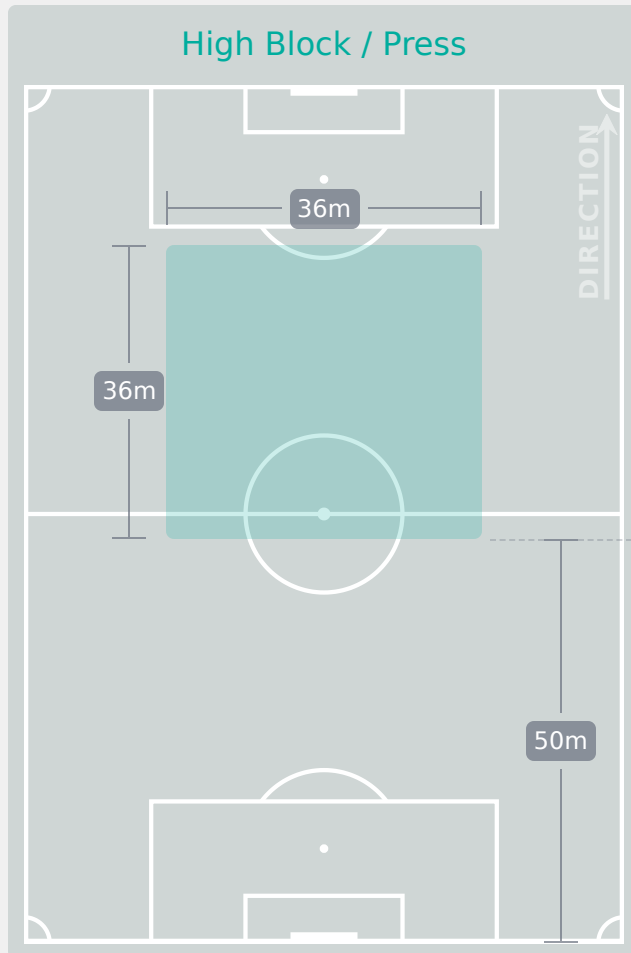
RIGHT CENTRE BACK



#	Player	Total Possession Regains
1	BAKARE Shukura	3
2	OKWUCHUKWU Chiamaka	2
6	IMURAN Rofiat	2
7	SABASTINE Flourish	4
8	BELLO Amina	5
10	YINA Philomina	5
12	OHAEGBULEM Oluchi	6
15	OLISE Chioma	7
17	ALANI Jumoke	2
18	OLADIPO Shukurat	8
19	FOLORUNSHO Comfort	8
3	OSIGWE Goodness	1
9	AKEKOROMOWEI Janet	0
14	AJAKAYE Opeyemi	1

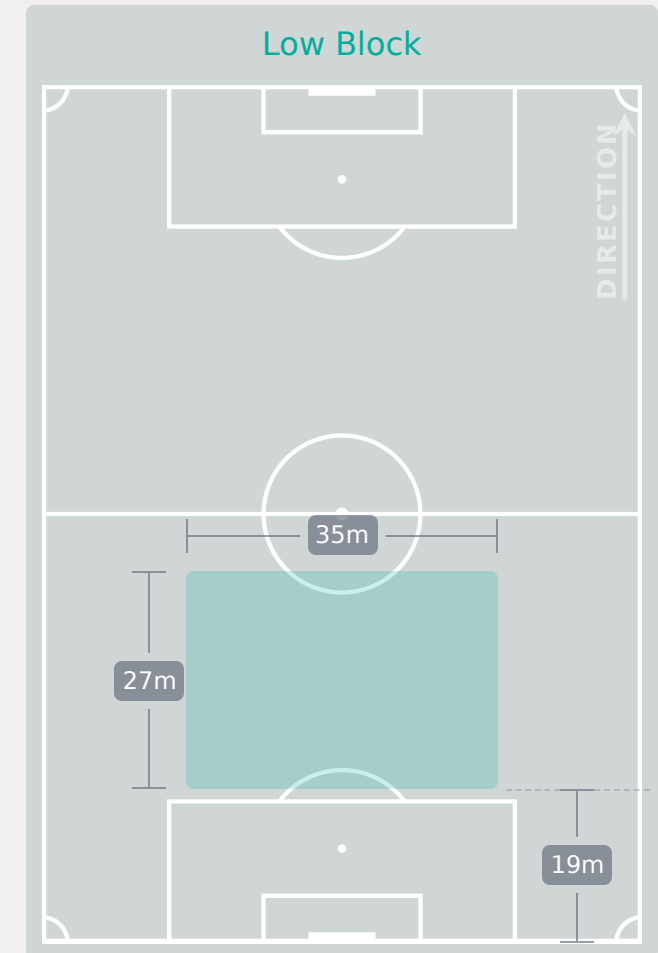
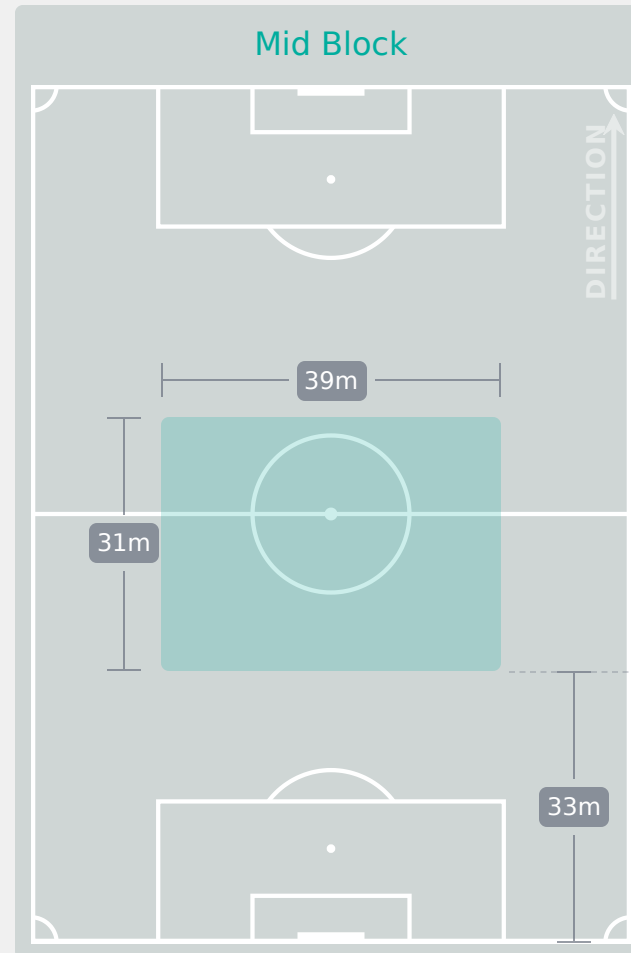
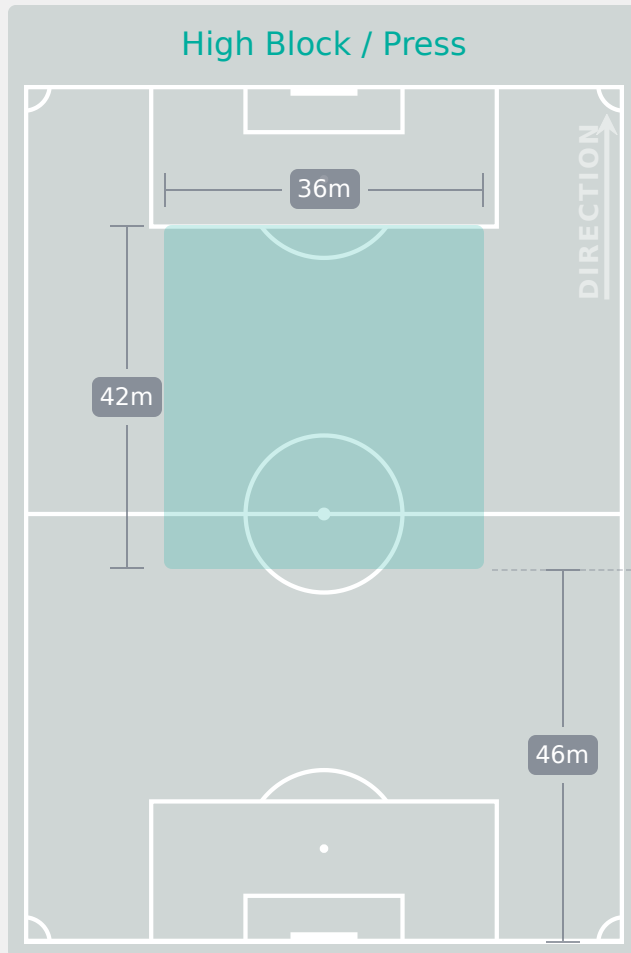
Defensive Line Height & Team Length

Germany 



Defensive Line Height & Team Length

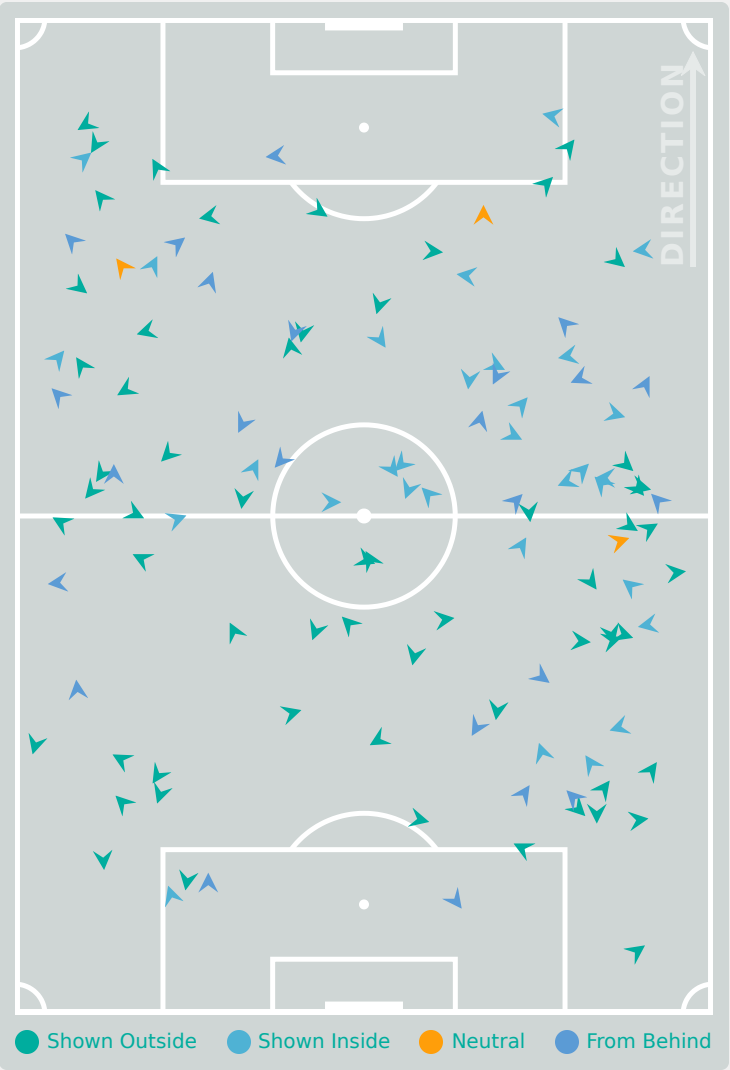
Nigeria



Defensive Pressure



Germany



119	Total Pressures	199
40	Direct Pressures	38
1.64s	Avg Pressure Duration	1.59s
47	Forced Turnovers	61
8.35s	Ball Recovery Time	11.73s
28	Pushing on into Pressing	51
63	Pushing on	154
31	Pressing Direction Inside	33
61	Pressing Direction Outside	117

Most Direct Pressures

7

VEIT Jella
LEFT CENTRE BACK

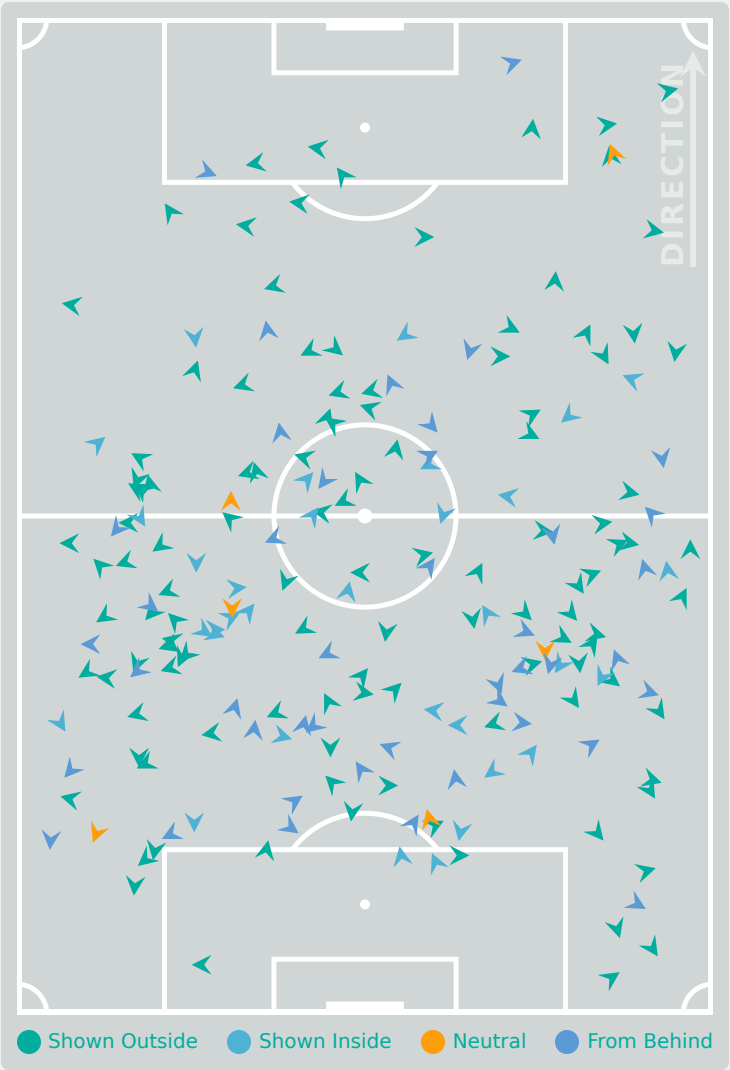
Most Direct Pressures

7

OHAEGBULEM Oluchi
LEFT BACK

Nigeria







GOALKEEPING

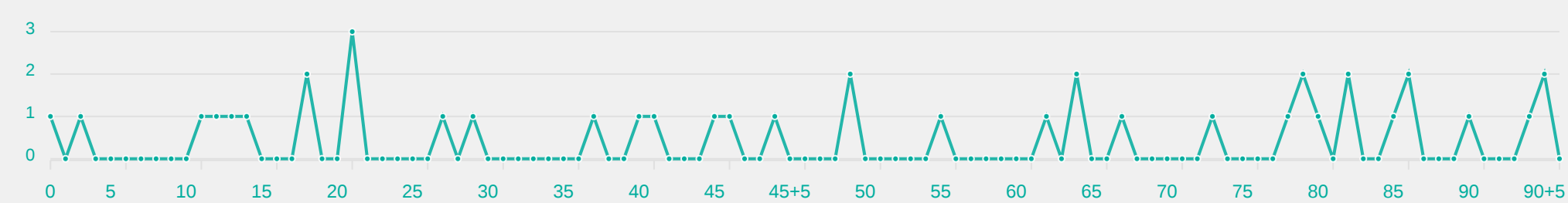
Germany 3 - 1 Nigeria

Goalkeeping Involvement



Germany

Germany GK Involvement Timeline



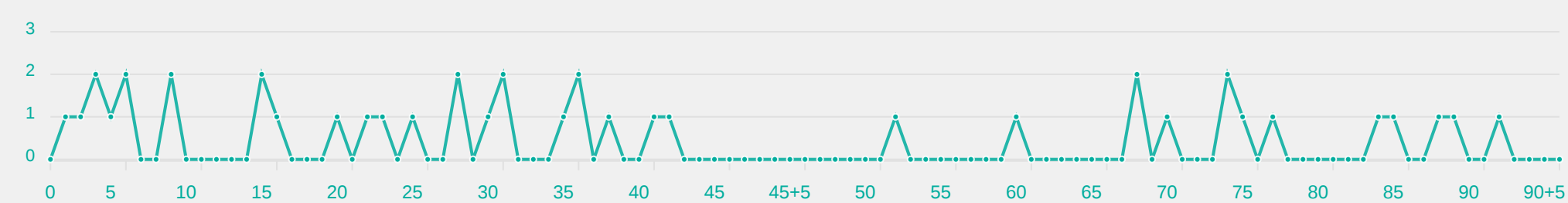
41

Total Involvements



Nigeria

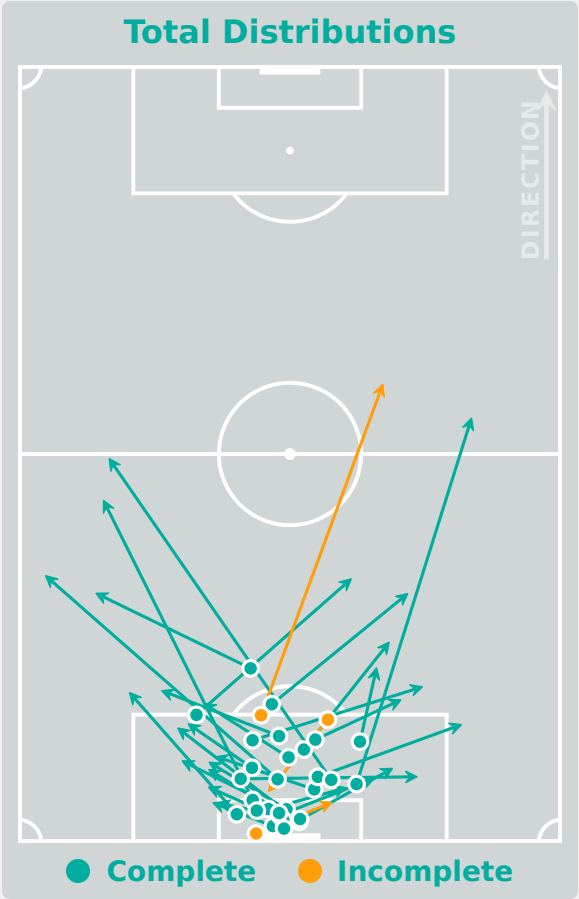
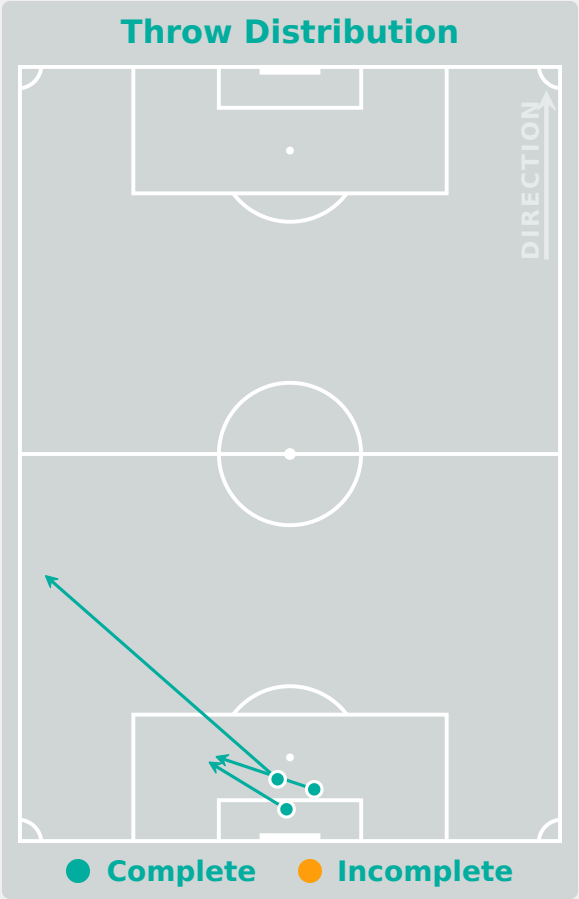
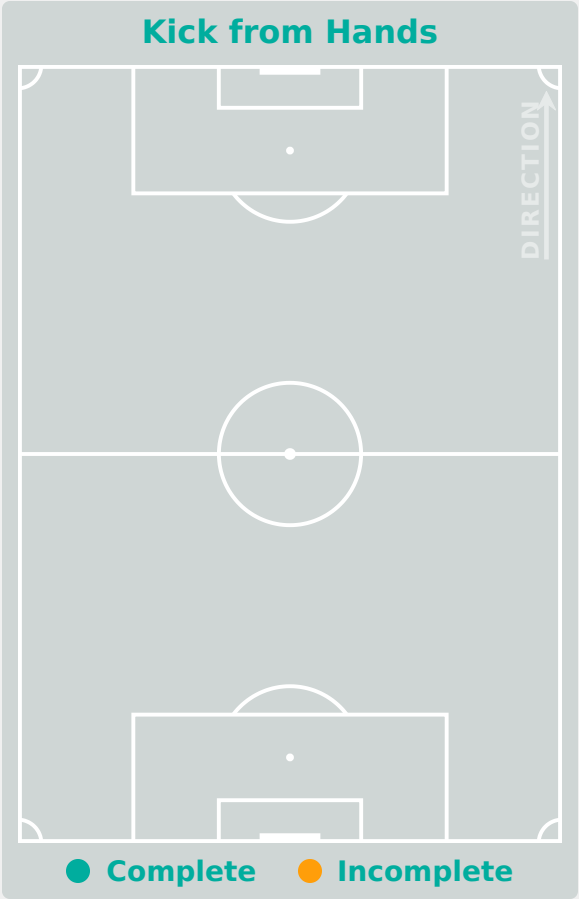
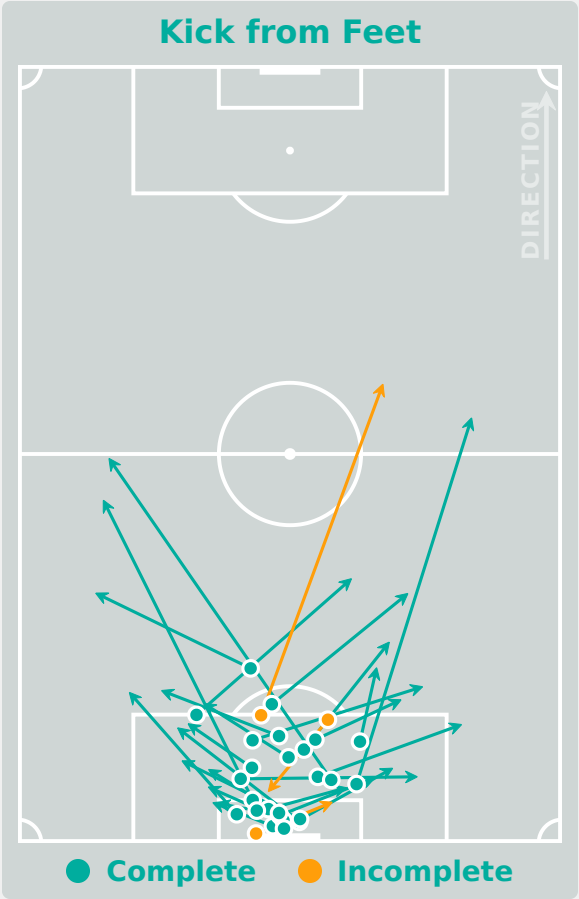
Nigeria GK Involvement Timeline



41

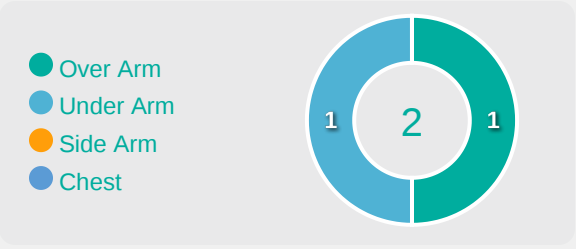
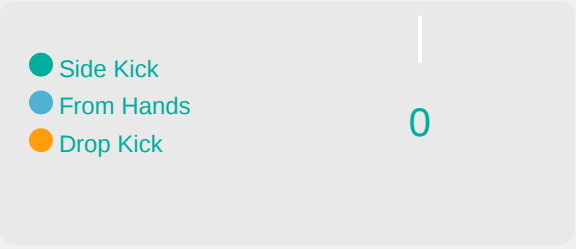
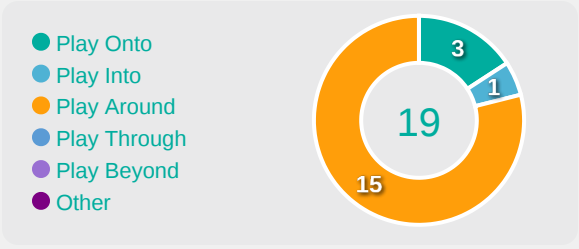
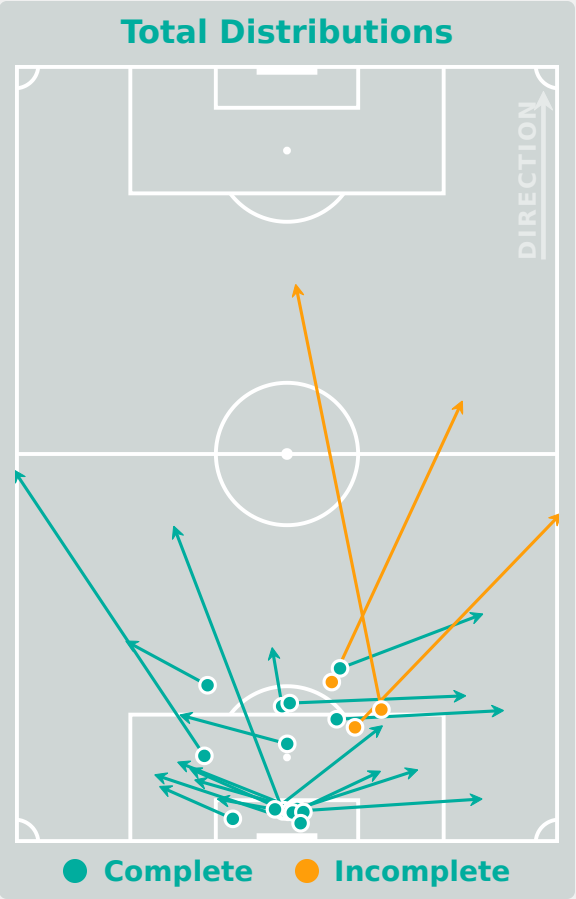
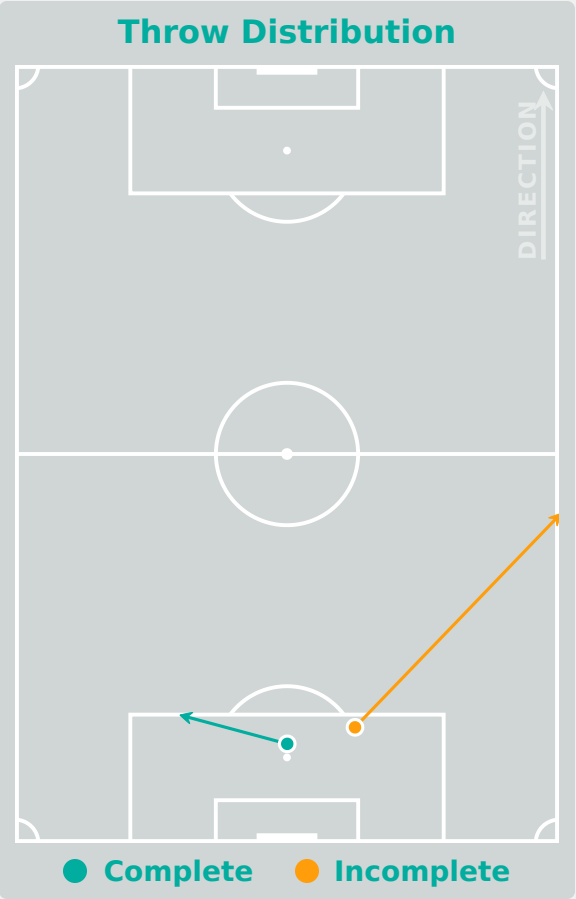
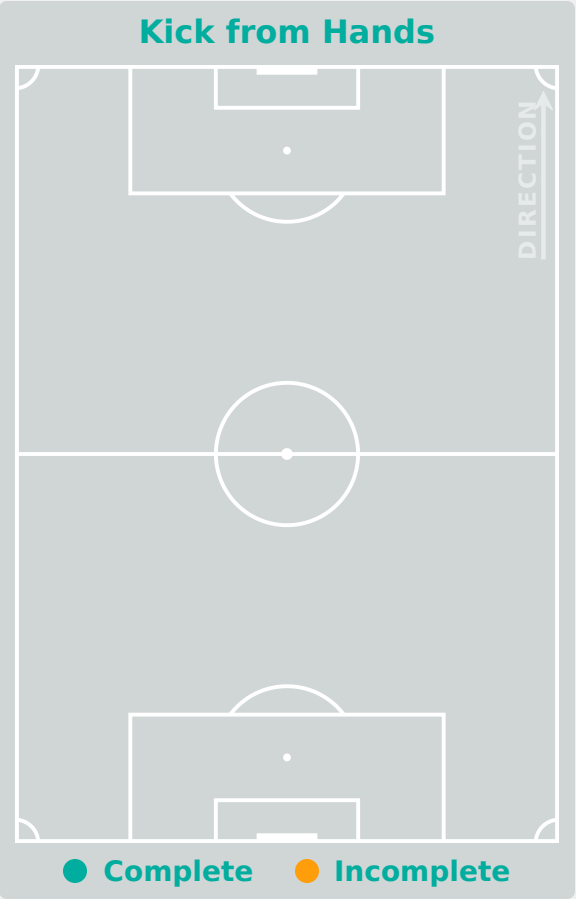
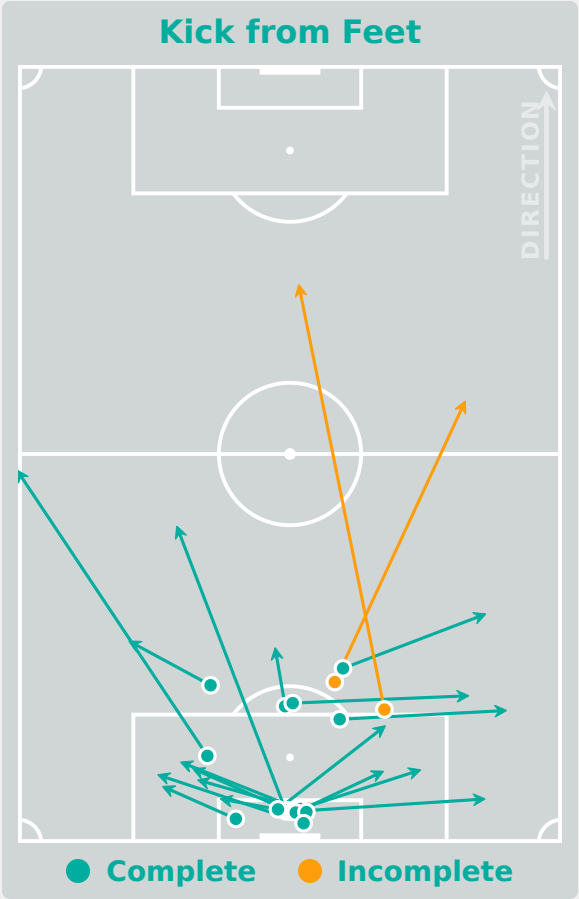
Total Involvements

Goalkeeping Distribution

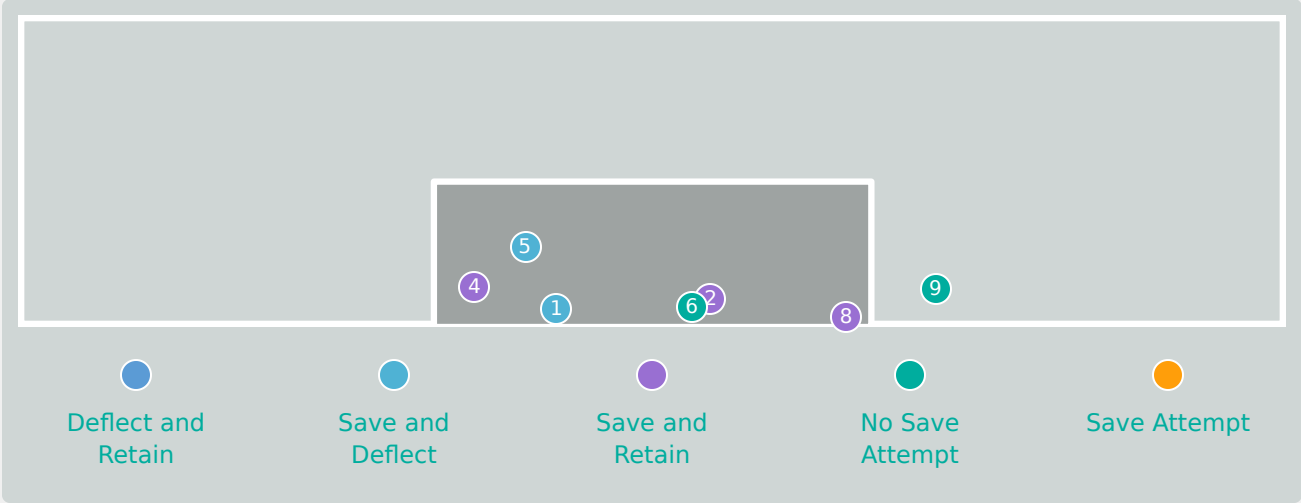
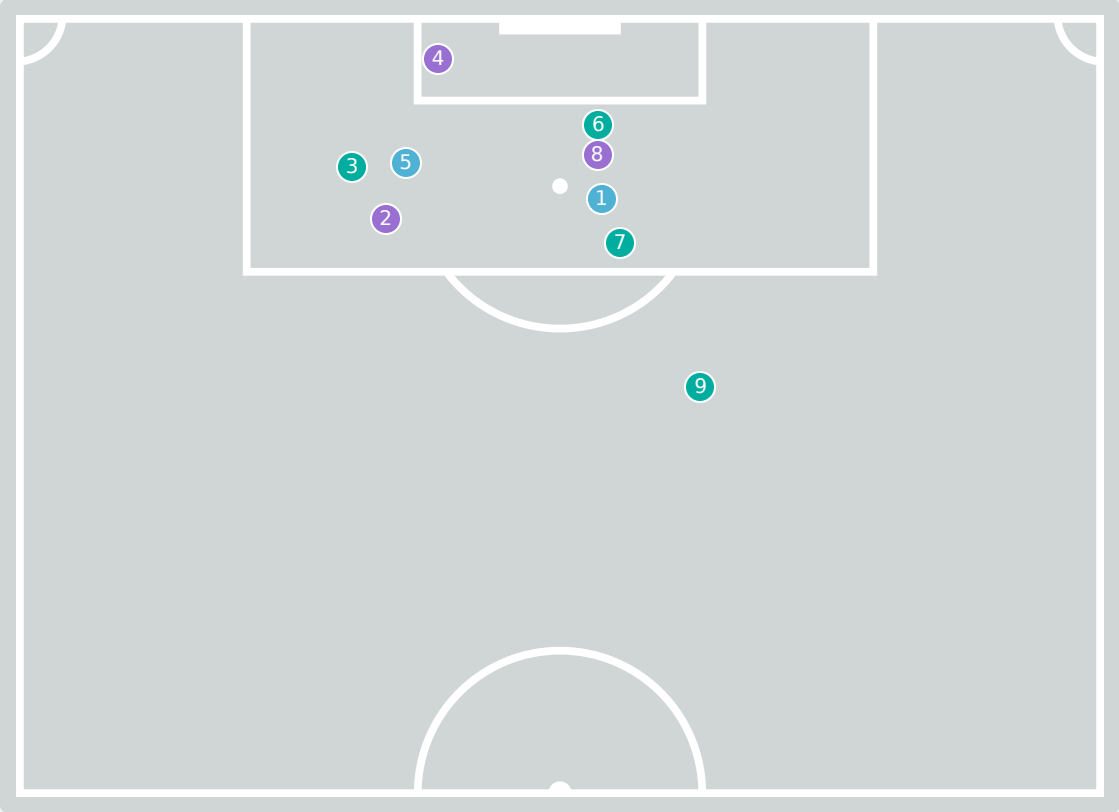


Goalkeeping Distribution

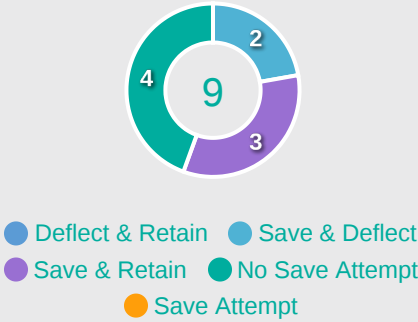
Nigeria 



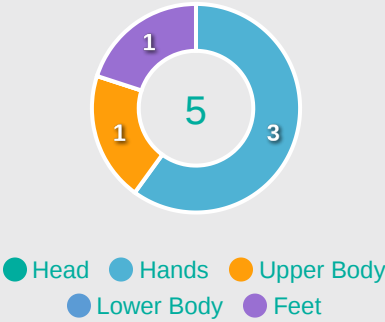
Goal Prevention



Intervention Type



Intervention Body Type



9

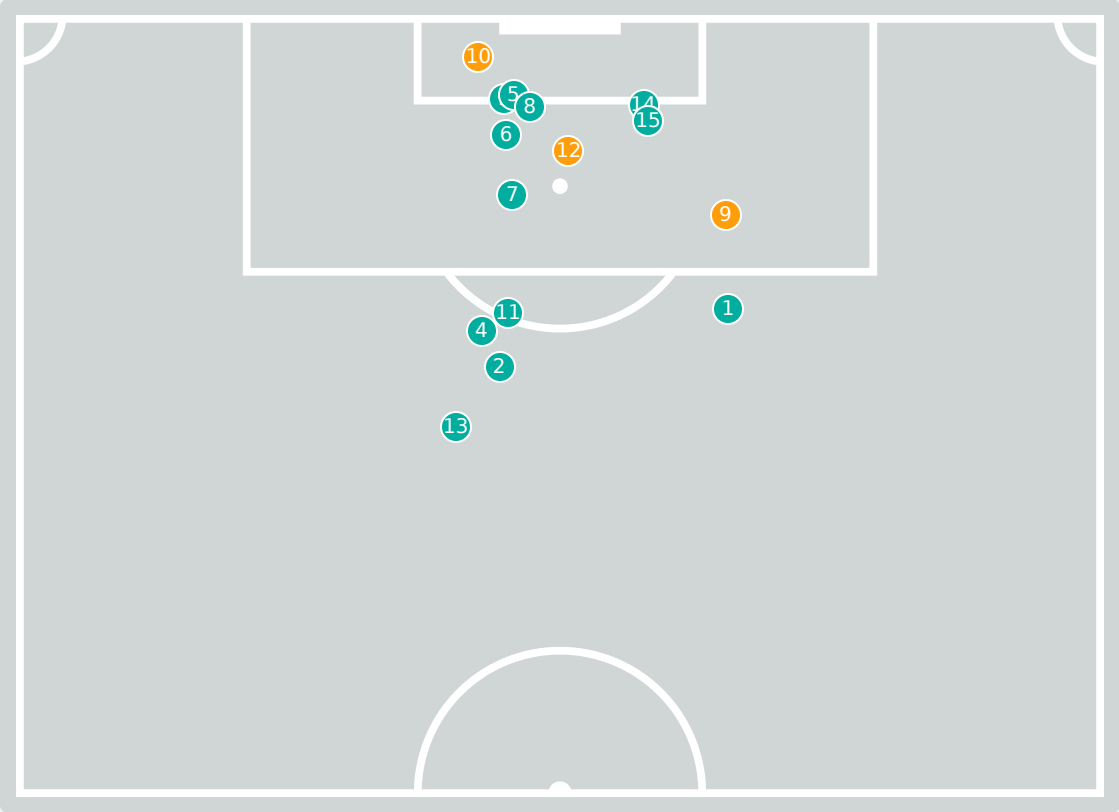
Total Attempts on Goal Faced

83

Save %

Total Attempts on Goal Faced	Total Goal Interventions	Save & Retain	Deflect & Retain	Save & Deflect	Save Attempt	No Save Attempt
9	5	3	0	2	0	4

Goal Prevention

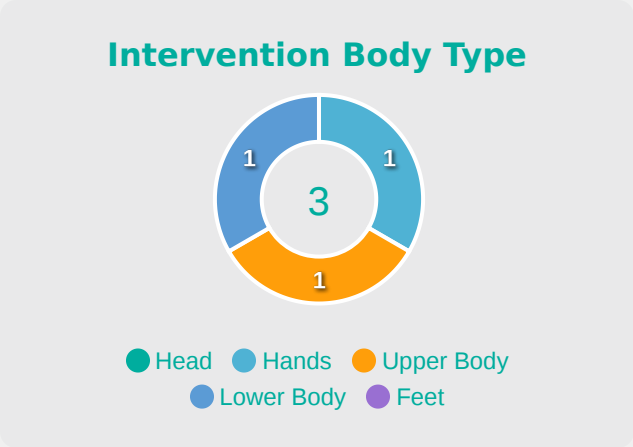
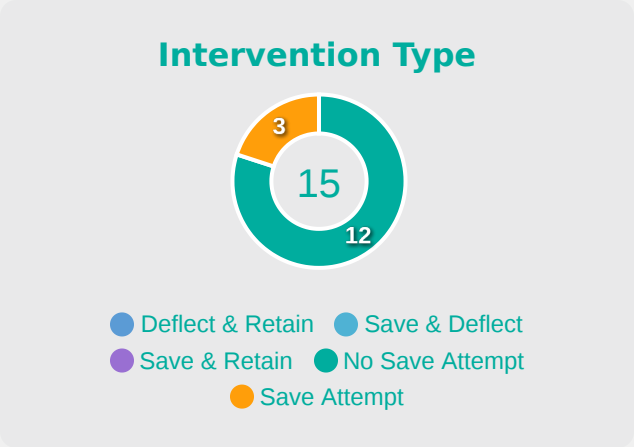
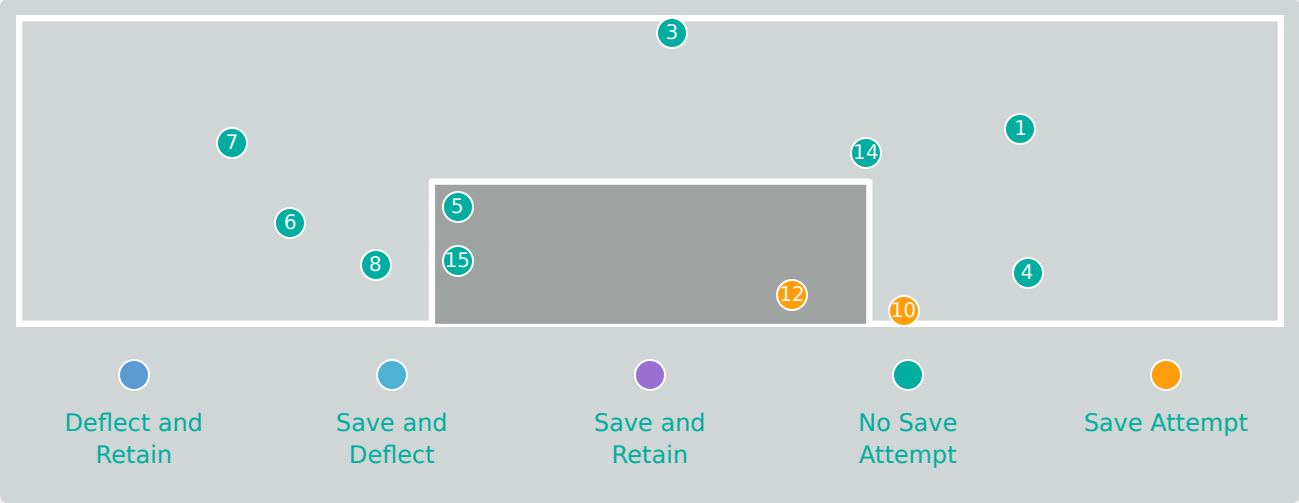


15

Total Attempts on Goal Faced

0

Save %



Total Attempts on Goal Faced	Total Goal Interventions	Save & Retain	Deflect & Retain	Save & Deflect	Save Attempt	No Save Attempt
15	0	0	0	0	3	12

Aerial Control

Germany 

1
Total Interventions

0
Complete

0
Punches

0
Incomplete

1
Complete

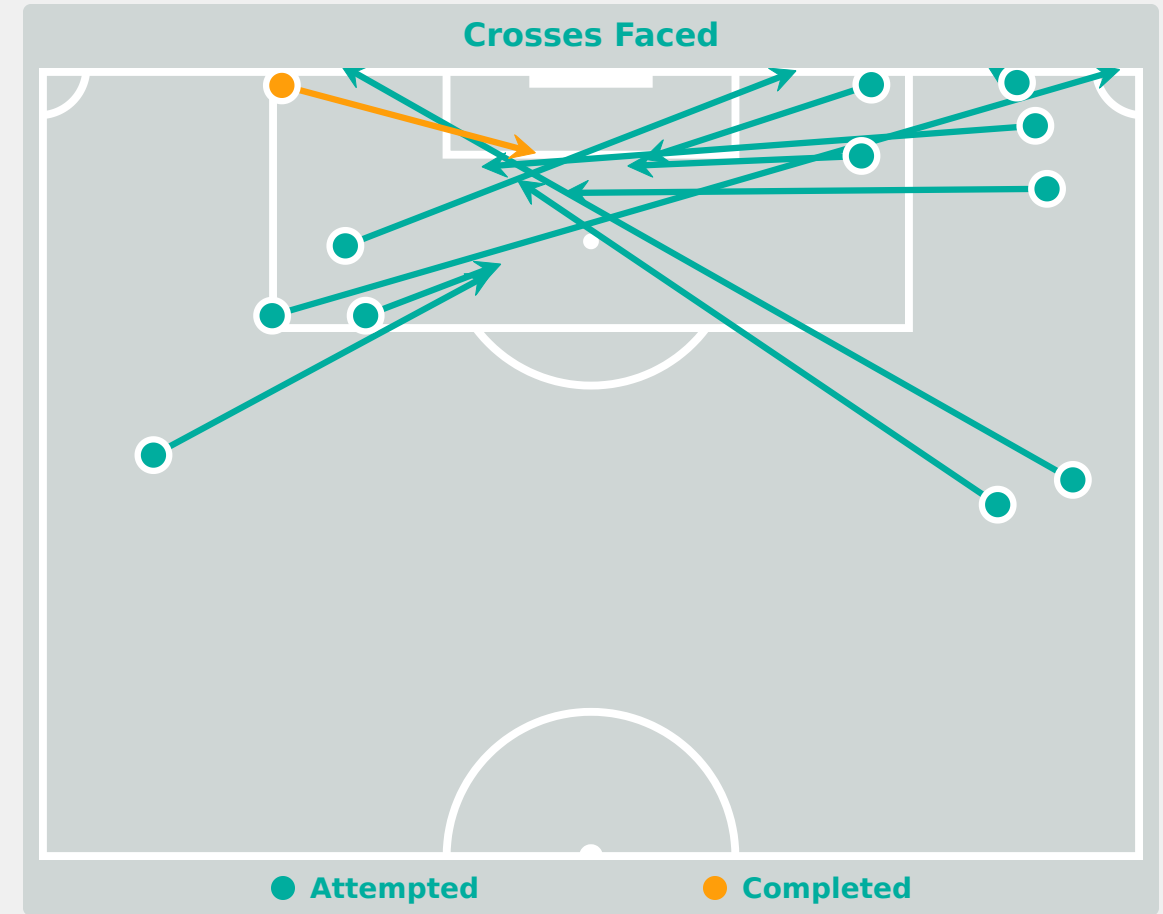
1
Claims

0
Incomplete

0
Complete

0
Tipped/Palmed

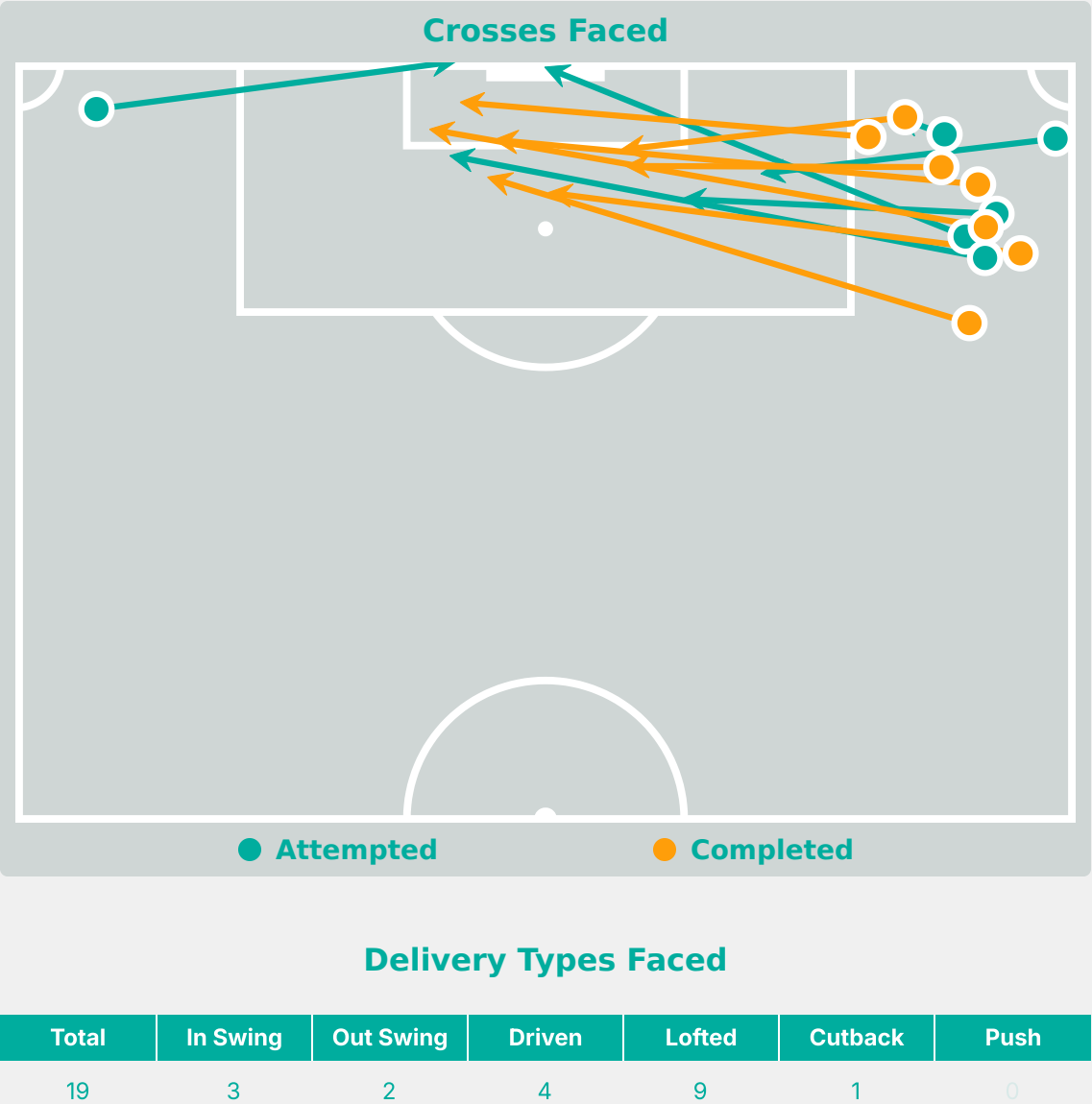
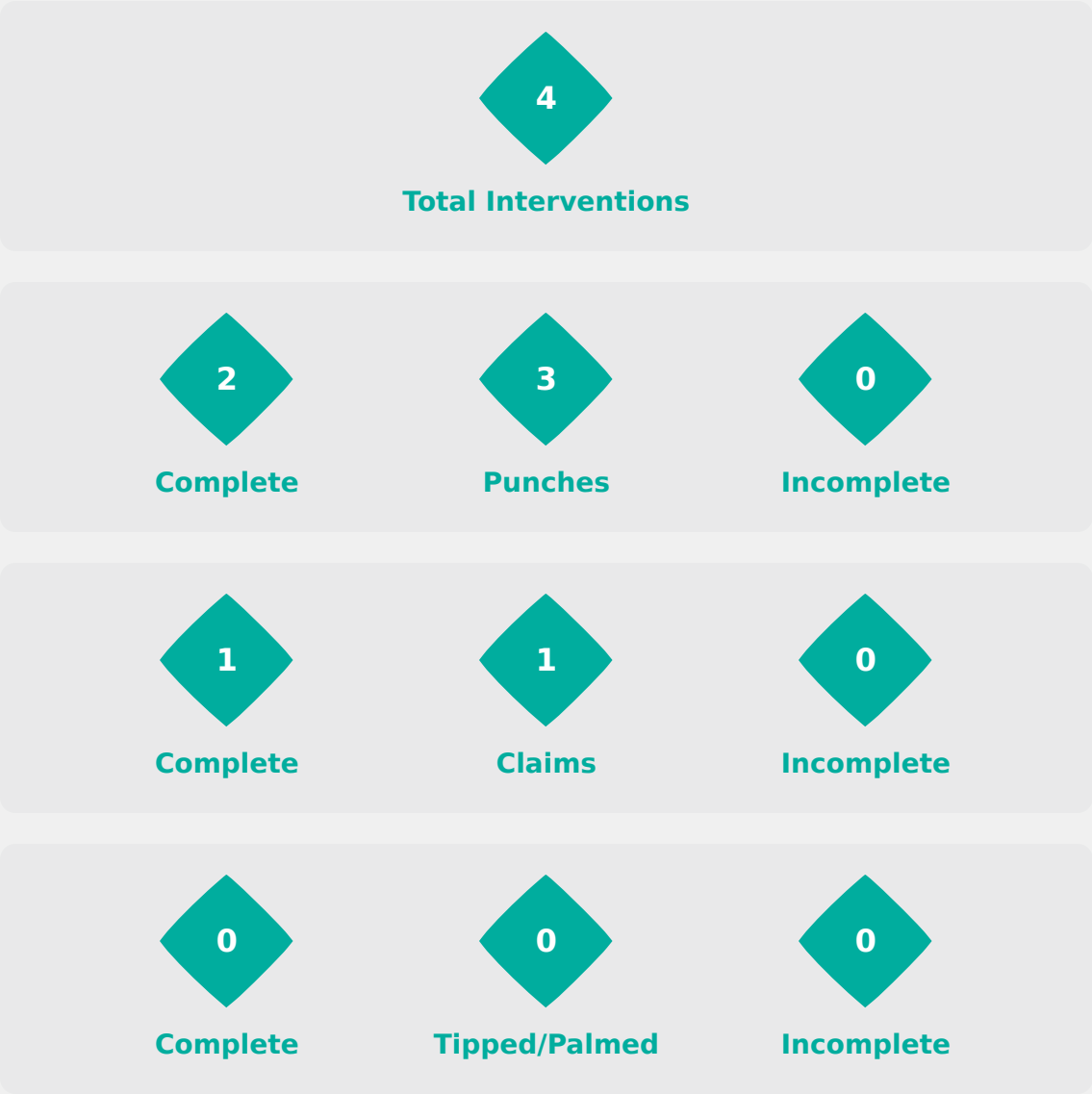
0
Incomplete



Delivery Types Faced

Total	In Swing	Out Swing	Driven	Lofted	Cutback	Push
14	2	1	0	6	2	3

Aerial Control





SET PLAYS

Germany 3 - 1 Nigeria

Set Plays



42

Total Set Plays

11

Total Free Kicks

0

Total Penalties

8

Total Corners

23

Total Throw Ins

Free Kicks	
Type	Total
Direct	8
Direct (on target)	0
Direct (off target)	0
Indirect	3

Corners			
Delivery Type	From Left Side	From Right Side	Total
Direct to Area	2	4	6
Short	2	0	2

Edge of Penalty Area	0	0	0
----------------------	---	---	---

Corners	
Delivery Style	Total
Inswing	0
Outswing	1
Driven	1

Set Plays



34

Total Set Plays

8

Total Free Kicks

0

Total Penalties

3

Total Corners

23

Total Throw Ins

Free Kicks	
Type	Total
Direct	8
Direct (on target)	0
Direct (off target)	0
Indirect	0

Corners			
Delivery Type	From Left Side	From Right Side	Total
Direct to Area	0	2	2
Short	1	0	1

Edge of Penalty Area	0	0	0
----------------------	---	---	---

Corners	
Delivery Style	Total
Inswing	0
Outswing	0
Driven	0



INDIVIDUAL DATA IN POSSESSION

Germany 3 - 1 Nigeria

In Possession - Distributions



#	Player	Passes Attempted	Passes Completed	Pass Completion %	Switches of Play	Crosses Attempted	Crosses Completed	Line Breaks Attempted	Line Breaks Completed	Line Break Completion %	Ball Progressions	Take Ons	Step Ins	Attempts at Goal	Goals
1	ADAMCZYK Rebecca	31	28	90%	0	0	0	5	4	80%	0	0	0	0	0
3	JANZEN Mathilde	14	11	79%	0	0	0	0	0	0%	0	0	0	0	0
4	VEIT Jella	87	74	85%	1	0	0	28	21	75%	0	0	0	1	0
5	DIEHM Vanessa	104	97	93%	0	0	0	24	20	83%	4	0	4	0	0
7	ZICAI Cora	28	21	75%	0	4	3	10	7	70%	6	3	3	2	0
8	ZDEBEL Sofie	45	33	73%	0	6	0	6	5	83%	0	0	0	1	1
9	STEINER Marie	20	16	80%	0	0	0	6	5	83%	2	2	0	2	0
11	BAUM Lisa	10	5	50%	0	2	1	1	0	0%	1	1	0	2	0
15	SCHNEIDER Tomke	61	51	84%	1	0	0	21	15	71%	3	0	3	1	0
17	SEHITLER Alara	41	36	88%	0	3	2	15	10	67%	4	1	3	3	1
20	GLONING Laura	55	51	93%	0	1	0	15	14	93%	2	1	1	2	0
2	HILS Miriam	1	1	100%	0	1	1	1	1	100%	1	0	1	0	0
10	NACHTIGALL Sophie	26	21	81%	0	2	1	4	2	50%	1	1	0	0	0
16	PLATNER Paulina	2	2	100%	0	0	0	1	1	100%	0	0	0	0	0
18	ERNST Sarah	13	12	92%	0	0	0	2	2	100%	1	1	0	1	1

In Possession - Offers & Receptions



			Offer movement types						
#	Player	Total Offers	In Front	In Between	Out to In	In to Out	In Behind	No Movement	Offers Received
1	ADAMCZYK Rebecca	1	0	0	0	0	0	1	0
3	JANZEN Mathilde	18	7	9	0	0	1	1	6
4	VEIT Jella	2	0	1	0	0	0	1	1
5	DIEHM Vanessa	8	1	1	0	0	0	6	6
7	ZICAI Cora	50	10	2	3	1	7	27	16
8	ZDEBEL Sofie	49	15	19	2	4	5	4	23
9	STEINER Marie	24	3	19	0	1	1	0	7
11	BAUM Lisa	9	0	1	0	1	5	2	5
15	SCHNEIDER Tomke	2	1	0	0	0	0	1	2
17	SEHITLER Alara	43	18	14	3	1	3	4	14
20	GLONING Laura	32	20	3	0	0	0	9	17
2	HILS Miriam	4	0	1	0	0	2	1	0
10	NACHTIGALL Sophie	26	6	11	1	0	6	2	14
16	PLATNER Paulina	5	1	3	0	0	0	1	1
18	ERNST Sarah	14	2	7	0	0	4	1	4

In Possession - Distributions



#	Player	Passes Attempted	Passes Completed	Pass Completion %	Switches of Play	Crosses Attempted	Crosses Completed	Line Breaks Attempted	Line Breaks Completed	Line Break Completion %	Ball Progressions	Take Ons	Step Ins	Attempts at Goal	Goals
1	BAKARE Shukura	21	18	86%	0	0	0	4	2	50%	0	0	0	0	0
2	OKWUCHUKWU Chiamaka	12	7	58%	0	3	0	4	2	50%	1	0	1	4	1
6	IMURAN Rofiat	20	15	75%	1	2	0	5	3	60%	1	1	0	2	0
7	SABASTINE Flourish	16	13	81%	0	0	0	7	5	71%	0	0	0	1	0
8	BELLO Amina	7	5	71%	0	0	0	2	0	0%	1	1	0	0	0
10	YINA Philomina	46	29	63%	0	0	0	8	3	38%	0	0	0	0	0
12	OHAEGBULEM Oluchi	54	33	61%	0	0	0	31	20	65%	1	0	1	0	0
15	OLISE Chioma	14	11	79%	0	1	0	4	1	25%	0	0	0	0	0
17	ALANI Jumoke	48	33	69%	0	4	0	19	10	53%	0	0	0	0	0
18	OLADIPO Shukurat	29	20	69%	0	0	0	11	6	55%	0	0	0	0	0
19	FOLORUNSHO Comfort	31	22	71%	0	0	0	12	6	50%	0	0	0	1	0
3	OSIGWE Goodness	5	2	40%	0	3	1	3	0	0%	2	2	0	1	0
9	AKEKOROMOWEI Janet	1	1	100%	0	0	0	0	0	0%	0	0	0	0	0
14	AJAKAYE Opeyemi	3	1	33%	0	1	0	2	0	0%	0	0	0	0	0

In Possession - Offers & Receptions



			Offer movement types						
#	Player	Total Offers	In Front	In Between	Out to In	In to Out	In Behind	No Movement	Offers Received
1	BAKARE Shukura	2	0	0	0	0	0	2	1
2	OKWUCHUKWU Chiamaka	17	0	1	0	0	16	0	5
6	IMURAN Rofiat	11	0	1	0	2	7	1	1
7	SABASTINE Flourish	26	2	4	0	2	15	3	4
8	BELLO Amina	12	4	5	0	1	2	0	2
10	YINA Philomina	24	14	2	0	0	0	8	9
12	OHAEGBULEM Oluchi	2	1	0	0	0	0	1	2
15	OLISE Chioma	8	0	4	0	0	2	2	3
17	ALANI Jumoke	14	1	1	0	0	0	12	12
18	OLADIPO Shukurat	4	0	0	0	0	0	4	1
19	FOLORUNSHO Comfort	1	0	0	0	0	0	1	0
3	OSIGWE Goodness	7	1	3	0	0	2	1	2
9	AKEKOROMOWEI Janet	1	0	1	0	0	0	0	0
14	AJAKAYE Opeyemi	5	0	2	0	0	1	2	1



INDIVIDUAL DATA OUT OF POSSESSION

Germany 3 - 1 Nigeria

Out of Possession



#	Player	Tackles Made / Won	Blocks	Interceptions	Pressing Direct	Pressing Indirect	Duels Won - Aerial	Duels Won - Physical	Possession Contests won	Clearances	Loose Ball Receptions	Pushing On	Pushing On into Pressing	Possession Regains	Possession Interrupted
1	ADAMCZYK Rebecca	0 / 0	0	0	0	0	0	0	0	1	4	0	0	6	1
3	JANZEN Mathilde	4 / 2	3	0	3	4	2	0	3	0	3	1	1	7	1
4	VEIT Jella	2 / 0	2	0	7	2	2	0	2	9	11	1	0	4	8
5	DIEHM Vanessa	2 / 0	2	1	1	0	1	0	1	2	11	0	0	3	3
7	ZICAI Cora	5 / 1	3	2	6	19	0	0	1	0	5	30	16	5	4
8	ZDEBEL Sofie	5 / 2	3	0	4	8	0	0	0	2	1	2	0	5	4
9	STEINER Marie	3 / 1	2	0	3	5	1	0	1	0	6	5	2	1	2
11	BAUM Lisa	0 / 0	1	1	1	15	0	0	0	0	1	6	4	1	1
15	SCHNEIDER Tomke	4 / 3	5	1	2	6	4	0	4	4	9	7	2	8	4
17	SEHITLER Alara	0 / 0	5	0	4	7	3	0	4	3	10	2	0	6	4
20	GLONING Laura	6 / 1	2	0	6	5	2	0	2	14	10	8	3	5	10
2	HILS Miriam	0 / 0	0	0	0	0	0	0	0	0	2	1	0	1	0
10	NACHTIGALL Sophie	1 / 0	2	0	2	5	0	0	0	0	2	0	0	2	0
16	PLATNER Paulina	1 / 0	0	0	0	0	1	0	2	1	0	0	0	0	2
18	ERNST Sarah	0 / 0	2	0	1	3	1	0	1	1	1	0	0	0	1

Out of Possession



#	Player	Tackles Made / Won	Blocks	Interceptions	Pressing Direct	Pressing Indirect	Duels Won - Aerial	Duels Won - Physical	Possession Contests won	Clearances	Loose Ball Receptions	Pushing On	Pushing On into Pressing	Possession Regains	Possession Interrupted
1	BAKARE Shukura	0 / 0	0	0	0	0	0	0	0	0	2	0	0	3	0
2	OKWUCHUKWU Chiamaka	2 / 1	4	0	1	29	3	0	3	0	5	4	3	2	4
6	IMURAN Rofiat	3 / 1	4	0	4	18	0	0	0	1	6	17	9	2	4
7	SABASTINE Flourish	6 / 1	6	0	5	27	0	0	0	3	7	23	17	4	5
8	BELLO Amina	6 / 3	4	1	3	14	0	0	0	0	6	11	4	5	2
10	YINA Philomina	3 / 1	4	0	5	19	0	0	0	4	16	29	2	5	5
12	OHAEGBULEM Oluchi	4 / 1	7	1	7	3	1	0	2	6	13	7	1	6	9
15	OLISE Chioma	6 / 3	6	0	1	17	2	0	2	2	7	25	2	7	5
17	ALANI Jumoke	2 / 0	0	0	4	6	0	0	1	4	5	6	0	2	0
18	OLADIPO Shukurat	6 / 2	5	0	2	9	0	0	0	6	10	19	8	8	5
19	FOLORUNSHO Comfort	2 / 2	2	2	2	2	0	0	1	11	4	1	0	8	5
3	OSIGWE Goodness	2 / 1	0	0	1	8	2	0	2	2	5	2	0	1	2
9	AKEKOROMOWEI Janet	0 / 0	0	0	0	2	1	0	1	0	0	2	1	0	0
14	AJAKAYE Opeyemi	1 / 1	0	0	3	7	0	0	0	0	1	8	4	1	0



INDIVIDUAL DATA PHYSICAL

Germany 3 - 1 Nigeria

#	Player	Total Distance (m)	Zone 1: 0-7 km/h (m)	Zone 2: 7-15 km/h (m)	Zone 3: 15-20 km/h (m)	Zone 4: 20-25 km/h (m)	Zone 5: 25+ km/h (m)	High Speed Runs (Zone 4)	Sprints (Zone 5)	Top Speed (km/h)
1	ADAMCZYK Rebecca	4293.4	3322.2	774.9	130.6	65.7	0	8.0	0	23.3
3	JANZEN Mathilde	5332.7	1956.7	2762.7	436.8	151.6	25.0	17.0	2.0	26.1
4	VEIT Jella	9163.6	4179.1	3799.8	759.6	266.1	159.0	29.0	10.0	29.0
5	DIEHM Vanessa	10092.3	3988.1	4671.8	1143.8	281.6	7.0	26.0	1.0	25.6
7	ZICAI Cora	10510.3	3595.8	4801.4	1581.9	473.5	57.8	63.0	6.0	27.9
8	ZDEBEL Sofie	10588.2	4036.9	5000.3	1122.4	366.9	61.7	41.0	5.0	27.2
9	STEINER Marie	8160.7	3128.3	4193.5	625.1	199.5	14.2	28.0	2.0	26.0
11	BAUM Lisa	5125.6	2012.6	2329.1	577.5	180.6	25.8	20.0	3.0	28.8
15	SCHNEIDER Tomke	9900.0	4202.5	3930.6	1049.8	472.0	245.2	48.0	10.0	29.7
17	SEHITLER Alara	9569.0	4227.4	4351.9	659.8	245.7	84.2	33.0	6.0	28.4
20	GLONING Laura	9235.1	4324.9	3831.5	772.0	274.8	31.9	30.0	4.0	26.0
2	HILS Miriam	612.0	222.0	263.0	121.0	5.9	0	1.0	0	22.2
10	NACHTIGALL Sophie	5802.4	1950.1	2718.5	859.9	240.5	33.3	28.0	2.0	27.9
16	PLATNER Paulina	2071.0	723.7	1074.9	236.3	36.1	0	3.0	0	23.4
18	ERNST Sarah	5160.1	2068.5	2469.6	525.2	89.6	7.1	16.0	1.0	25.9

#	Player	Total Distance (m)	Zone 1: 0-7 km/h (m)	Zone 2: 7-15 km/h (m)	Zone 3: 15-20 km/h (m)	Zone 4: 20-25 km/h (m)	Zone 5: 25+ km/h (m)	High Speed Runs (Zone 4)	Sprints (Zone 5)	Top Speed (km/h)
1	BAKARE Shukura	3552.5	2976.5	481.9	66.0	28.0	0	4.0	0	24.7
2	OKWUCHUKWU Chiamaka	9058.7	4026.1	3018.3	1042.2	656.6	315.5	85.0	22.0	30.9
6	IMURAN Rofiat	6630.2	3117.3	2251.5	737.5	320.3	203.5	38.0	11.0	30.6
7	SABASTINE Flourish	10599.5	3742.4	4941.8	1288.1	522.9	104.4	61.0	7.0	31.3
8	BELLO Amina	5891.7	2447.1	2577.7	620.9	208.2	37.7	18.0	2.0	28.4
10	YINA Philomina	9735.2	3910.2	4618.9	1035.0	133.8	37.3	16.0	2.0	28.3
12	OHAEGBULEM Oluchi	9380.8	3909.3	4295.2	922.1	228.1	26.1	29.0	2.0	27.9
15	OLISE Chioma	10563.9	3836.4	4931.1	1419.0	359.3	18.2	33.0	2.0	27.2
17	ALANI Jumoke	8569.7	3419.5	4052.9	841.8	240.8	14.6	28.0	3.0	27.0
18	OLADIPO Shukurat	8368.2	4102.7	3408.7	653.5	171.0	32.3	25.0	4.0	27.4
19	FOLORUNSHO Comfort	9017.8	4221.6	3957.7	723.6	107.5	7.4	17.0	1.0	27.5
3	OSIGWE Goodness	4869.9	1724.5	2214.4	727.3	192.9	10.8	27.0	2.0	26.3
9	AKEKOROMOWEI Janet	827.9	305.1	361.6	127.2	34.0	0	3.0	0	23.8
14	AJAKAYE Opeyemi	2919.2	1130.5	1168.2	423.4	146.5	50.6	19.0	4.0	27.4

