

FIFA
U-20 WOMEN'S WORLD CUP
COLOMBIA 2024

France 3 - 3 Canada

Group B - Match 3

31 August 2024

15:00 Kick Off

Atanasio Girardot Stadium

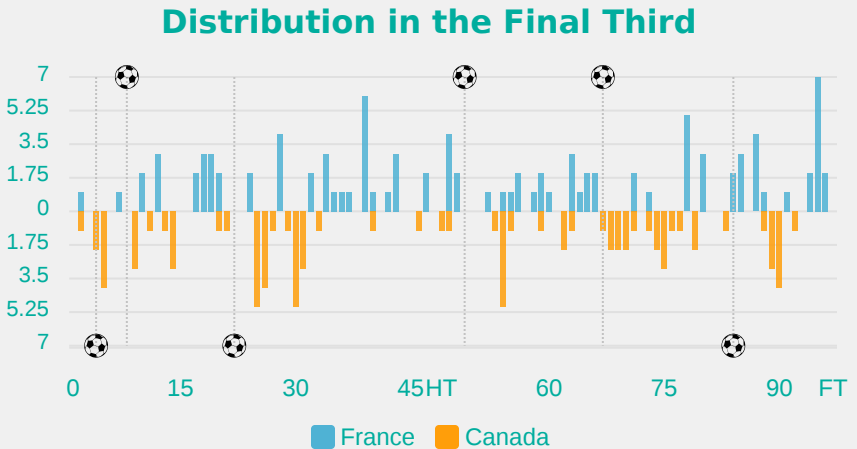
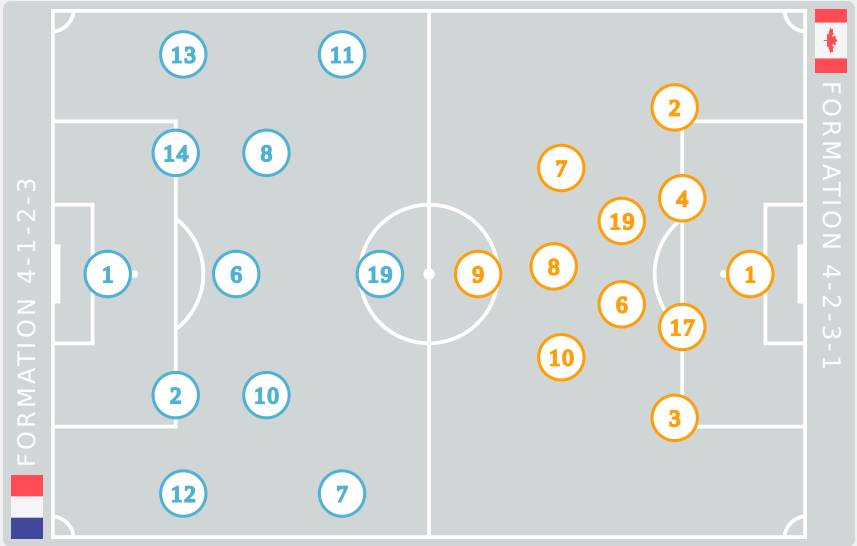
POST MATCH SUMMARY REPORT

Match Summary - Teams

France



Canada



STARTING

- 1

GK BELHADJ Feerine
- 2

DF HAELEWYN Marion
- 6

MF SEGUIN Maelle
- 7

FW HAUGOU Pauline
- 8

MF NELLER Chloe

↓ 45'
- 10

MF MOSSARD Juliette

↓ 65'
- 11

FW FONTAINE Airine

↓ 45'
- 12

DF SIERRA Pauline
- 13

DF NOTEL Lea
- 14

DF DIAZ Hillary

⚽ 67'
- 19

FW SCANNAPIECO Dona

⚽ 8'

⚽ 49'

↓ 65'

SUBSTITUTES

- 16

GK FRAN CART Emma
- 21

GK DUMAS Jade
- 3

MF BOURGAIN Lea
- 4

DF LEJEUNE Romane
- 5

FW HURTRE Oceane
- 9

FW YETNA Madeleine
- 15

MF MENDY Maeline

↑ 65'
- 17

FW CHOSSENOTTE Shana

↑ 45'
- 18

MF MENDY Melinda

↑ 45'
- 20

FW JOSEPH Liana

↑ 65'

STARTING

- FENWICK Faith

GK 1
- ARCHIBALD Mya

DF 2
- OTTEY Ella

DF 3
- ⚽ 22'

MARKESINI Zoe

DF 4
- ↓ 87'

HERNANDEZ GRAY Jeneva

MF 6
- ↓ 63'

ALLEN Amanda

FW 7
- ↓ 45'

JOURDE Florianne

MF 8
- ↓ 63'

⚽ 4'

ROSE Nyah

FW 9
- ↓ 69'

SMITH Olivia

MF 10
- OKEKE Janet

DF 17
- JOHNSON Anaya

MF 19

SUBSTITUTES

- HENNING Noelle

GK 20
- CORTES-BROWNE Sofia

GK 21
- LOGAN Clare

DF 5
- ⚽ 84'

↑ 63'

CHUKWU Annabelle

FW 11
- WAITE Sadie

MF 12
- ↑ 69'

WATSON Renee

DF 13
- PERRAULT Jaime

FW 14
- ↑ 63'

COLLIN Jadea

DF 15
- ↑ 87'

McBRIDE Ella

DF 16
- ↑ 45'

BRIGGS Kayla

MF 18

Match Summary - Key Statistics

France



Canada

Possession					
Total	<div><div>39.3%</div><div>12.9%</div><div>47.8%</div></div>		Total		
3	Goals				3
12 (7)	Attempts at Goal (On Target)				9 (4)
368 (267)	Total Passes (Complete)				378 (279)
73 %	Pass Completion %				74 %
72	Completed Line Breaks				51
3	Defensive Line Breaks				4
78	Receptions in the Final Third				75
12	Crosses				16
6	Ball Progressions				9
184 (69)	Defensive Pressures Applied (Direct Pressures)				131 (41)
50	Forced Turnovers				61
84	Second Balls				111



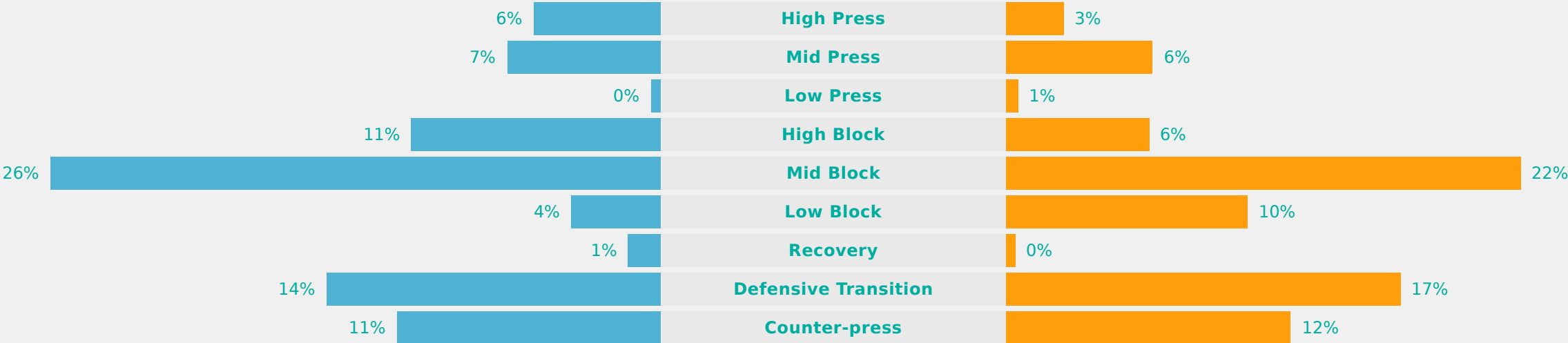
Phases of Play



IN POSSESSION



OUT OF POSSESSION

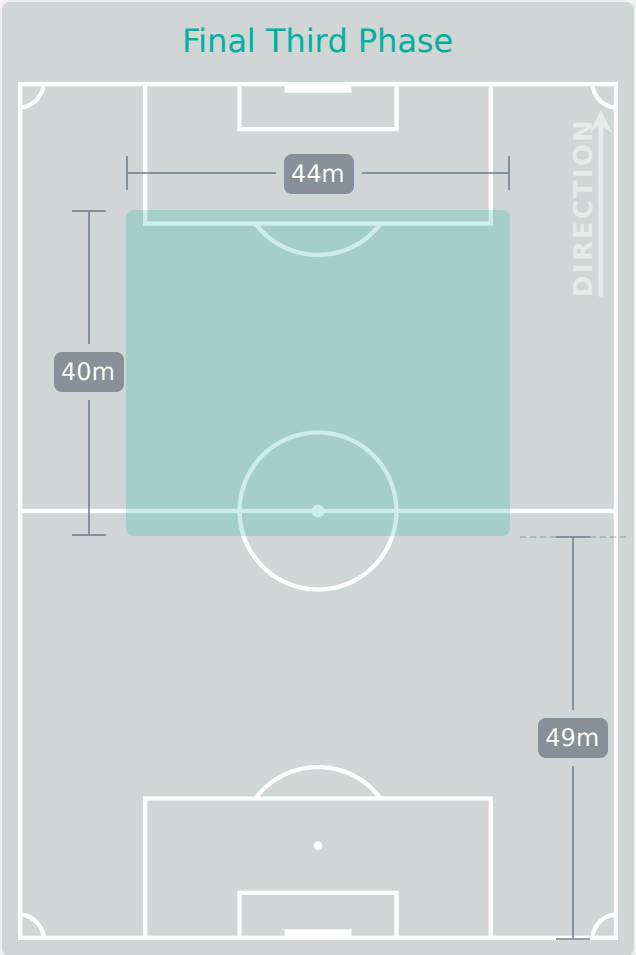
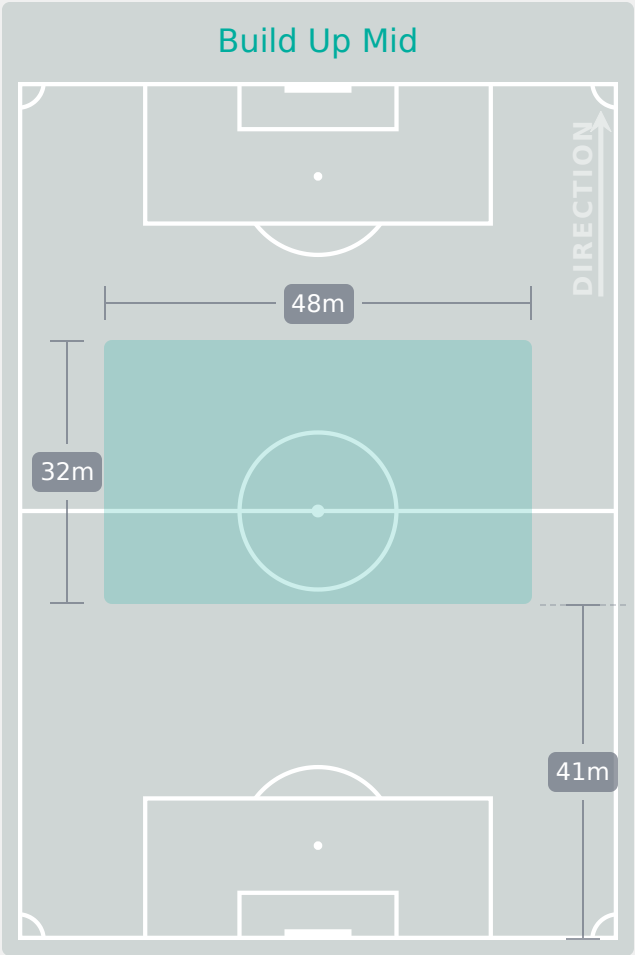
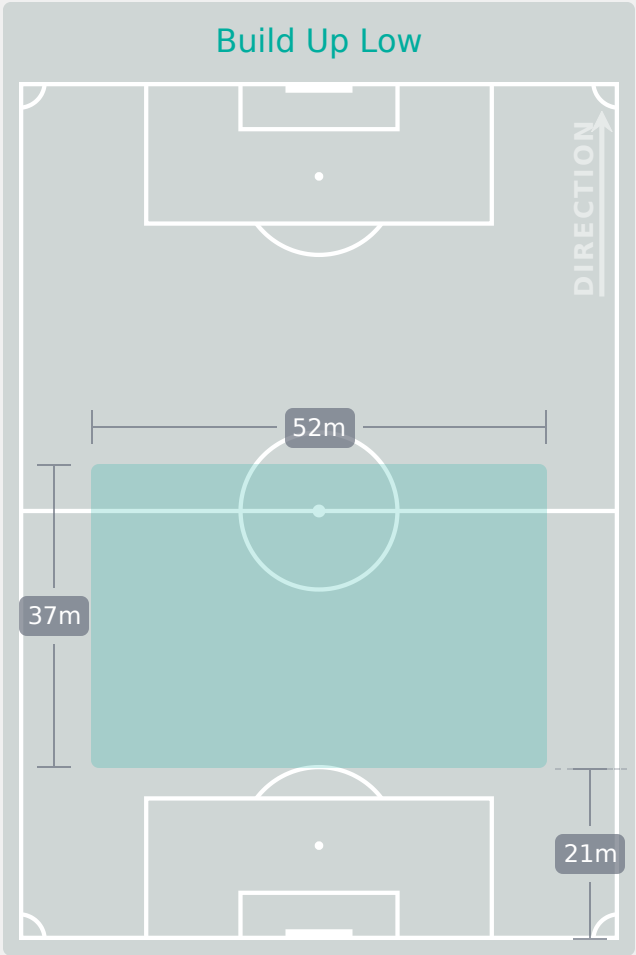




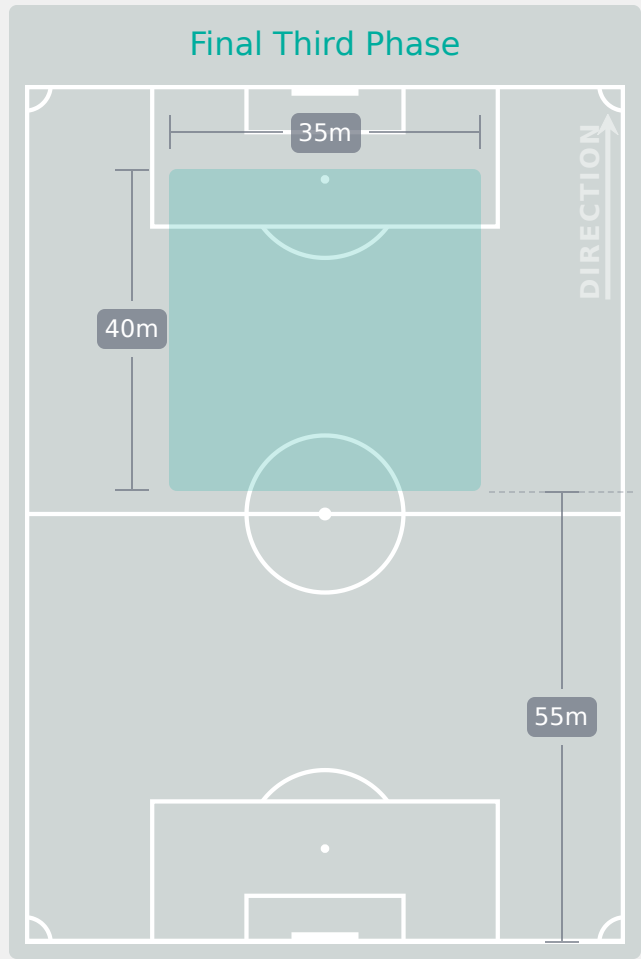
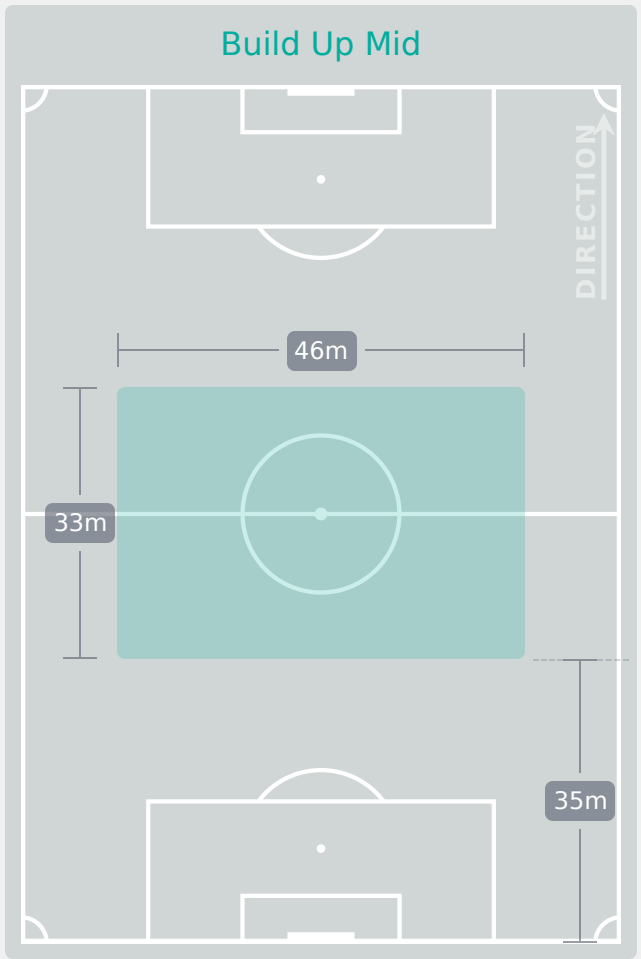
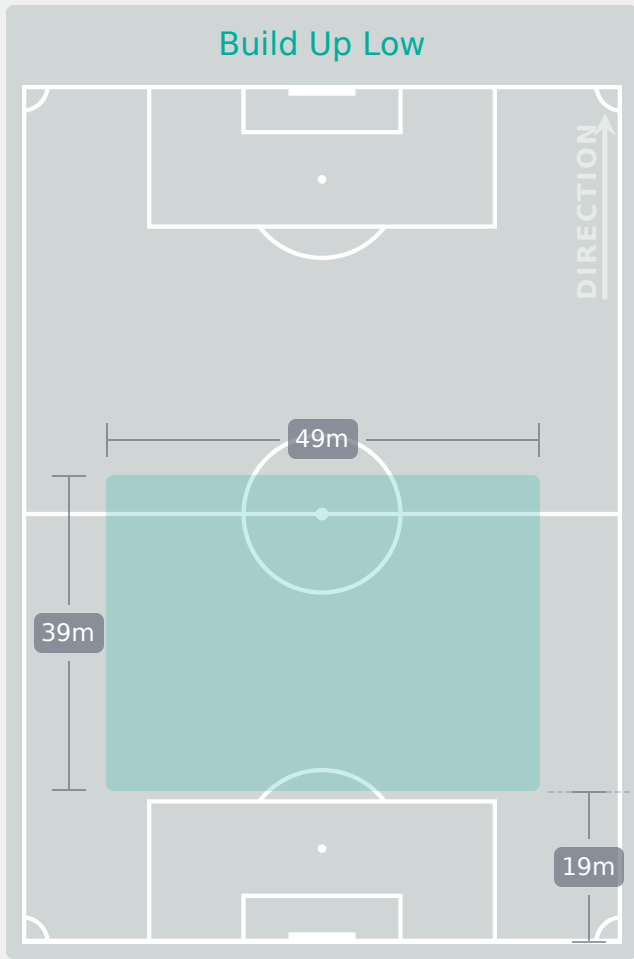
IN POSSESSION

France 3 – 3 Canada

In Possession Line Height & Team Length



In Possession Line Height & Team Length



Line Breaks



Attempted Line Breaks

104

20 ↑ 16

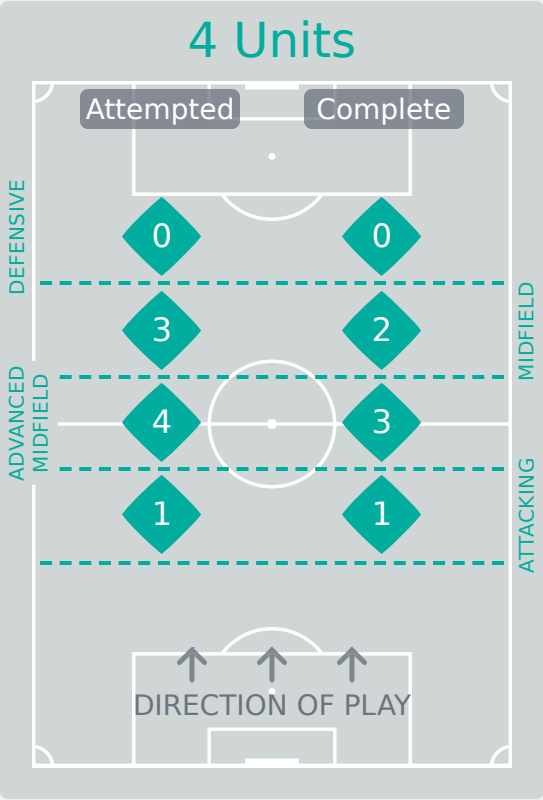
Attempted Complete

37 ↻ 30

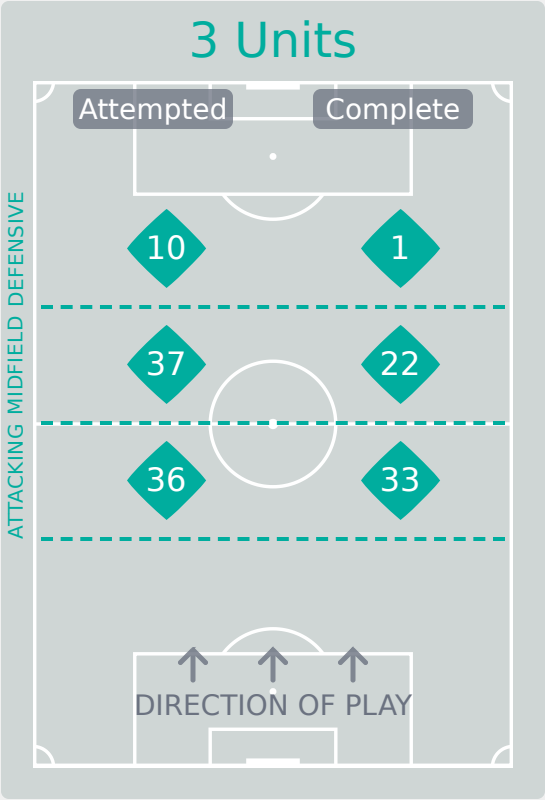
Attempted Complete

47 ↺ 26

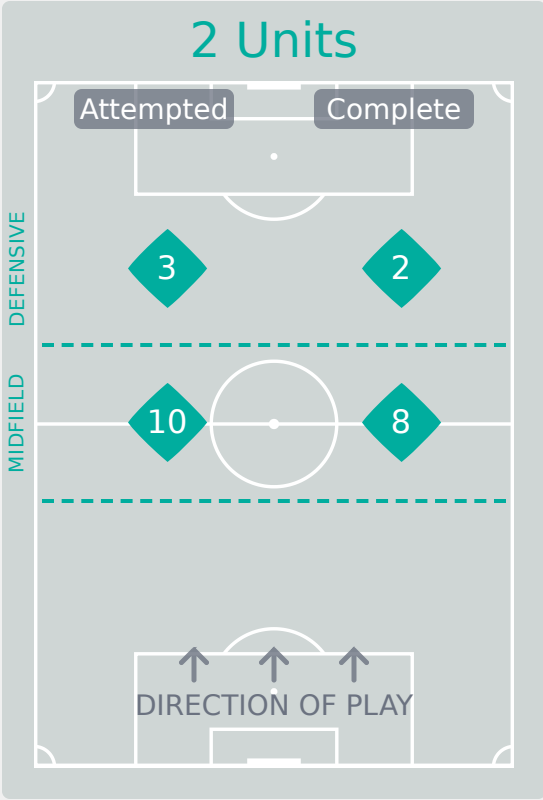
Attempted Complete



Attempted Line Breaks	8
Inside Shape	4
Outside Shape	4



Attempted Line Breaks	83
Inside Shape	58
Outside Shape	25



Attempted Line Breaks	13
Inside Shape	7
Outside Shape	6

Line Breaks



Attempted Line Breaks

87

17

Attempted

16

Complete

19

Attempted

12

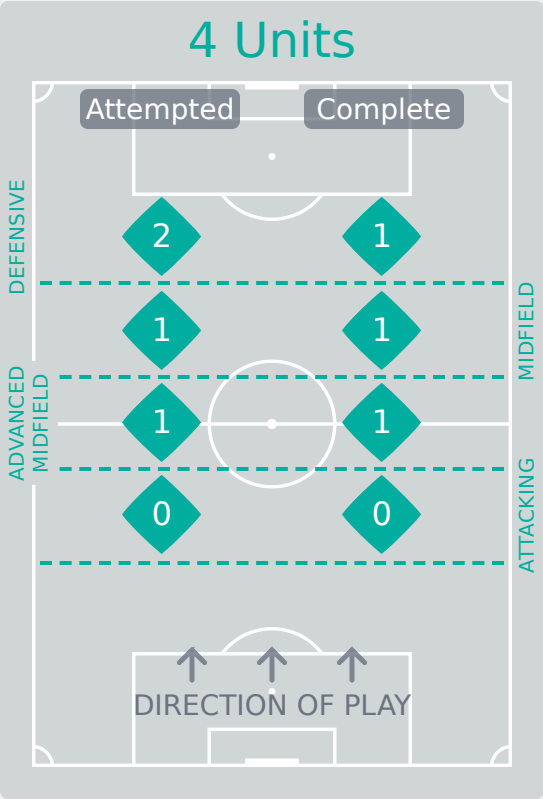
Complete

51

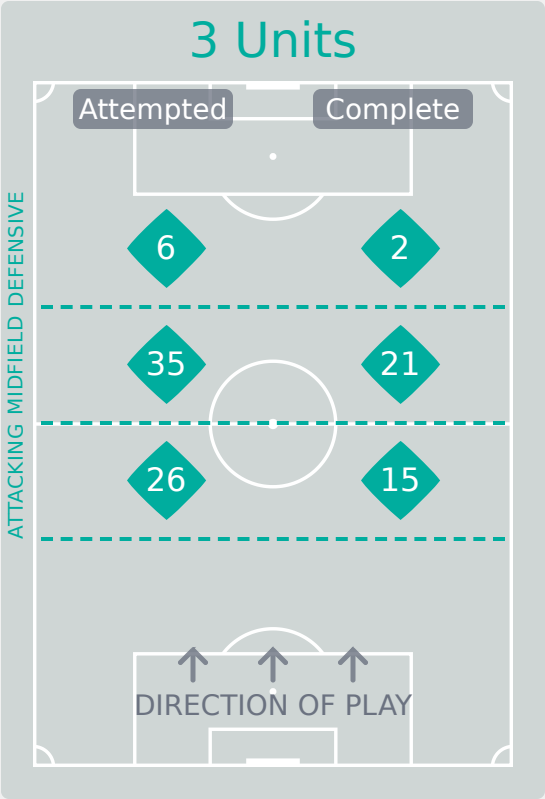
Attempted

23

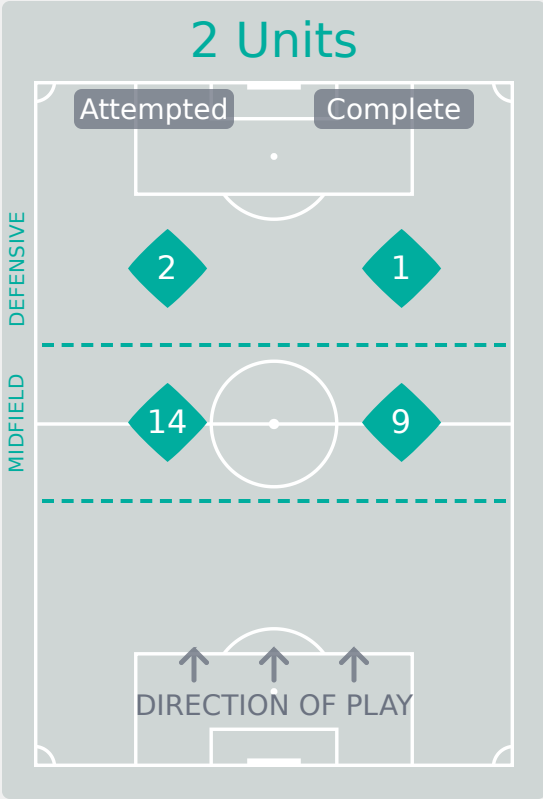
Complete



Attempted Line Breaks	4
Inside Shape	1
Outside Shape	3



Attempted Line Breaks	67
Inside Shape	50
Outside Shape	17



Attempted Line Breaks	16
Inside Shape	9
Outside Shape	7

Line Breaks



					4 Units				3 Units			2 Units		Direction			Distribution Type		
#	Player	Line Breaks Attempted	Line Breaks Completed	Line Break Completion %	Attacking Line	Attacking Midfield Line	Midfield Line	Defensive Line	Attacking Line	Midfield Line	Defensive Line	Midfield Line	Defensive Line	Through	Around	Over	Pass	Cross	Ball Progression
1	BELHADJ Feerine	10	6	60%	1	1	0	0	4	3	1	0	0	1	1	8	10	0	0
2	HAELEWYN Marion	19	16	84%	0	1	1	0	7	9	0	1	0	3	5	11	18	1	0
6	SEGUIN Maelle	9	5	56%	0	0	0	0	2	4	2	1	0	4	2	3	9	0	0
7	HAUGOU Pauline	11	5	45%	0	0	1	0	0	5	2	1	2	3	2	6	10	1	0
8	NELLER Chloe	3	3	100%	0	1	0	0	1	1	0	0	0	1	1	1	3	0	0
10	MOSSARD Juliette	2	0	0%	0	0	0	0	0	1	1	0	0	0	1	1	1	0	1
11	FONTAINE Airine	0	0	0%	0	0	0	0	0	0	0	0	0	0	0	0	0	0	0
12	SIERRA Pauline	6	5	83%	0	0	0	0	4	0	1	1	0	0	2	4	6	0	0
13	NOTEL Lea	22	17	77%	0	0	0	0	9	8	2	3	0	1	15	6	22	0	0
14	DIAZ Hillary	5	4	80%	0	0	0	0	4	0	1	0	0	1	3	1	5	0	0
19	SCANNAPIECO Dona	1	0	0%	0	0	1	0	0	0	0	0	0	0	0	1	1	0	0
15	MENDY Maeline	5	3	60%	0	0	0	0	2	2	0	1	0	2	1	2	4	1	0
17	CHOSSENOTTE Shana	1	0	0%	0	0	0	0	0	1	0	0	0	0	0	1	1	0	0
18	MENDY Melinda	9	7	78%	0	1	0	0	3	2	0	2	1	3	4	2	9	0	0
20	JOSEPH Liana	1	1	100%	0	0	0	0	0	1	0	0	0	1	0	0	1	0	0

Line Breaks



					4 Units				3 Units			2 Units		Direction			Distribution Type		
#	Player	Line Breaks Attempted	Line Breaks Completed	Line Break Completion %	Attacking Line	Attacking Midfield Line	Midfield Line	Defensive Line	Attacking Line	Midfield Line	Defensive Line	Midfield Line	Defensive Line	Through	Around	Over	Pass	Cross	Ball Progression
1	FENWICK Faith	16	4	25%	0	1	0	0	9	5	0	1	0	0	0	16	16	0	0
2	ARCHIBALD Mya	21	14	67%	0	0	0	0	5	13	0	3	0	3	3	15	21	0	0
3	OTTEY Ella	5	3	60%	0	0	0	0	1	3	0	1	0	1	2	2	5	0	0
4	MARKESINI Zoe	15	10	67%	0	0	0	2	6	5	0	2	0	2	4	9	15	0	0
6	HERNANDEZ GRAY Jeneva	3	3	100%	0	0	0	0	0	1	0	2	0	2	1	0	2	0	1
7	ALLEN Amanda	1	0	0%	0	0	0	0	0	1	0	0	0	0	1	0	1	0	0
8	JOURDE Florianne	2	2	100%	0	0	0	0	0	2	0	0	0	1	1	0	2	0	0
9	ROSE Nyah	3	1	33%	0	0	1	0	0	1	1	0	0	0	0	3	3	0	0
10	SMITH Olivia	2	1	50%	0	0	0	0	0	0	1	1	0	0	0	2	1	1	0
17	OKEKE Janet	7	6	86%	0	0	0	0	5	1	1	0	0	3	3	1	7	0	0
19	JOHNSON Anaya	7	4	57%	0	0	0	0	0	1	2	4	0	4	2	1	7	0	0
11	CHUKWU Annabelle	0	0	0%	0	0	0	0	0	0	0	0	0	0	0	0	0	0	0
13	WATSON Renee	1	1	100%	0	0	0	0	0	0	0	0	1	0	0	1	1	0	0
15	COLLIN Jadea	2	1	50%	0	0	0	0	0	1	1	0	0	0	2	0	2	0	0
16	McBRIDE Ella	1	0	0%	0	0	0	0	0	0	0	0	1	0	0	1	1	0	0
18	BRIGGS Kayla	1	1	100%	0	0	0	0	0	1	0	0	0	1	0	0	1	0	0

Passing Networks



#	Passes From ↓ to →	BELHADJ Feerine	HAELEWYN Marion	SEGUIN Maelle	HAUGOU Pauline	NELLER Chloe	MOSSARD Juliette	FONTAINE Airine	SIERRA Pauline	NOTEL Lea	DIAZ Hillary	SCANNAPIECO Dona	MENDY Maeline	CHOSSENOTTE Shana	MENDY Melinda	JOSEPH Liana
1	BELHADJ Feerine		10	1	1	0	0	0	4	2	2	0	1	0	1	0
2	HAELEWYN Marion	14		2	5	2	3	0	5	0	2	1	1	1	1	0
6	SEGUIN Maelle	0	2		5	0	0	2	3	1	1	1	0	1	3	1
7	HAUGOU Pauline	1	0	1		1	1	0	1	3	0	3	2	0	0	1
8	NELLER Chloe	0	1	2	2		1	2	0	6	3	2	0	0	0	0
10	MOSSARD Juliette	1	0	1	3	1		0	2	0	0	2	0	0	0	0
11	FONTAINE Airine	0	0	1	0	3	0		0	4	0	1	0	0	0	0
12	SIERRA Pauline	0	2	0	4	2	2	0		0	0	0	1	0	1	0
13	NOTEL Lea	2	1	1	0	3	1	8	0		6	0	0	3	2	0
14	DIAZ Hillary	6	7	2	1	1	0	0	1	3		0	0	1	1	0
19	SCANNAPIECO Dona	0	0	1	1	1	0	0	0	0	0		0	0	2	0
15	MENDY Maeline	0	0	0	2	0	0	0	1	1	0	0		0	1	1
17	CHOSSENOTTE Shana	0	1	0	0	0	0	0	0	3	1	0	0		2	1
18	MENDY Melinda	1	0	0	2	0	1	0	0	2	3	0	3	4		2
20	JOSEPH Liana	0	0	2	0	0	0	0	0	0	0	0	2	1	0	

Top 5 Player to Player Passers		
Player	Passed To	% of Total Team Passes
HAELEWYN Marion	BELHADJ Feerine	6%
BELHADJ Feerine	HAELEWYN Marion	4.3%
NOTEL Lea	FONTAINE Airine	3.4%
DIAZ Hillary	HAELEWYN Marion	3%
NELLER Chloe	NOTEL Lea	2.6%

Passing Networks

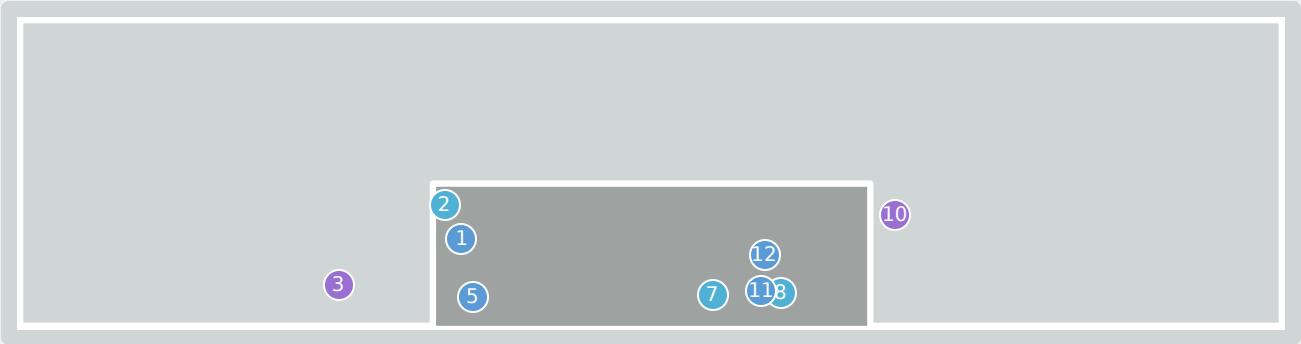
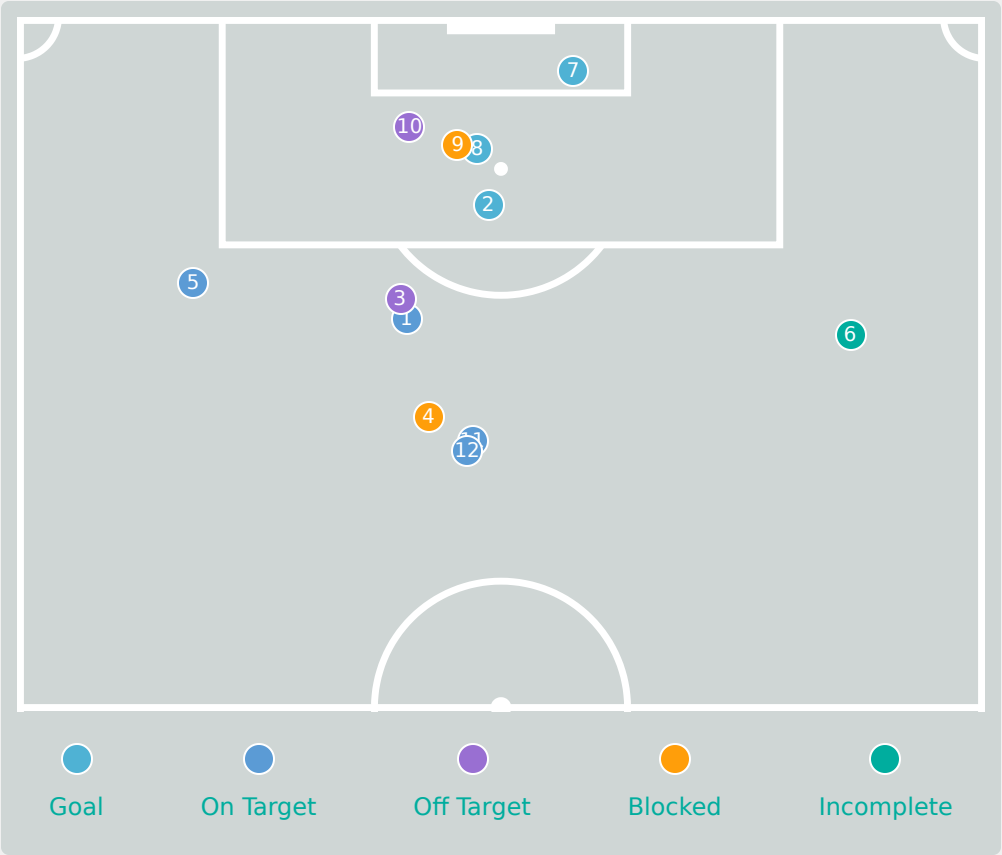


#	Passes From ↓ to →	FENWICK Faith	ARCHIBALD Mya	OTTEY Ella	MARKESINI Zoe	HERNANDEZ GRAY Geneva	ALLEN Amanda	JOURDE Florianne	ROSE Nyah	SMITH Olivia	OKEKE Janet	JOHNSON Anaya	CHUKWU Annabelle	WATSON Renee	COLLIN Jadea	McBRIDE Ella	BRIGGS Kayla
1	FENWICK Faith		2	1	12	0	1	1	0	0	8	0	0	0	0	0	0
2	ARCHIBALD Mya	1		0	1	2	4	0	4	0	3	4	0	0	2	0	0
3	OTTEY Ella	1	0		1	5	0	1	0	2	2	1	0	1	0	0	1
4	MARKESINI Zoe	13	4	4		1	0	0	2	4	9	0	0	0	1	0	0
6	HERNANDEZ GRAY Geneva	0	1	3	10		0	1	0	4	3	2	1	0	0	0	1
7	ALLEN Amanda	0	4	0	1	0		1	3	0	1	1	0	0	0	0	0
8	JOURDE Florianne	0	1	0	3	2	1		0	3	0	3	0	0	0	0	0
9	ROSE Nyah	0	1	0	0	1	3	0		1	0	1	0	0	0	0	0
10	SMITH Olivia	0	0	2	1	1	2	1	2		1	4	1	0	0	0	0
17	OKEKE Janet	11	2	6	10	0	1	1	1	0		1	0	0	1	0	1
19	JOHNSON Anaya	1	3	1	4	4	4	1	1	3	1		1	0	1	0	1
11	CHUKWU Annabelle	0	0	0	0	0	0	0	0	1	0	0		0	0	0	1
13	WATSON Renee	0	0	0	0	0	0	0	0	0	0	1	0		0	0	0
15	COLLIN Jadea	0	1	0	0	0	0	0	0	0	0	1	1	0		0	1
16	McBRIDE Ella	0	0	0	0	0	0	0	0	0	0	0	0	0	0		0
18	BRIGGS Kayla	0	1	3	0	1	0	0	0	1	0	0	2	1	2	0	

Top 5 Player to Player Passers		
Player	Passed To	% of Total Team Passes
MARKESINI Zoe	FENWICK Faith	5.2%
FENWICK Faith	MARKESINI Zoe	4.8%
OKEKE Janet	FENWICK Faith	4.4%
HERNANDEZ GRAY Geneva	MARKESINI Zoe	4%

OKEKE Janet	MARKESINI Zoe	4%
-------------	---------------	----

Attempts at Goal



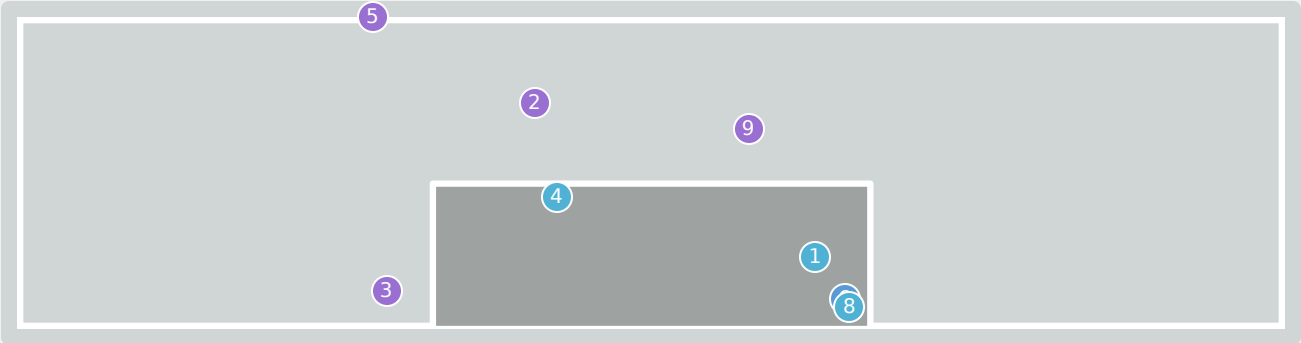
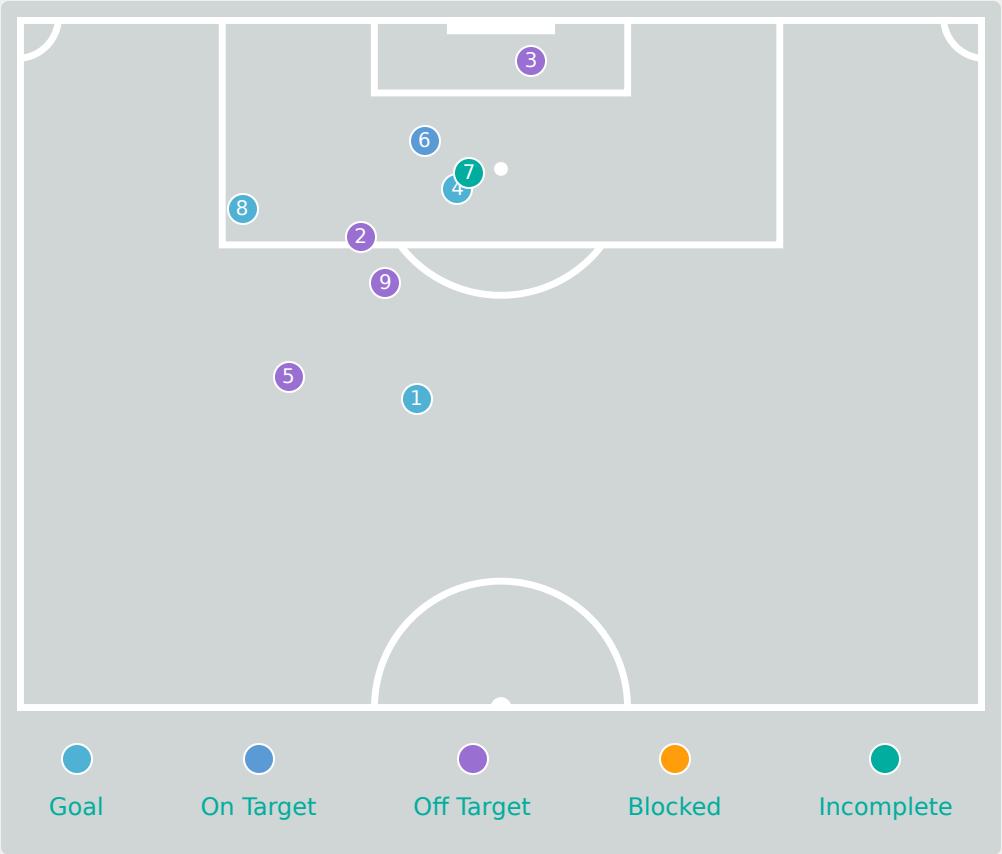
Key	Outcome	Shots
●	Goals	3
●	On Target	4
●	Off Target	2
●	Blocked	2
●	Incomplete	1

Attempts at Goal



Time	Player	Outcome	Body Part	Delivery Type
0	10 MOSSARD Juliette	On Target - Saved	Right Foot	Loose Ball
7	19 SCANNAPIECO Dona	On Target - Goal	Right Foot	Pass
19	10 MOSSARD Juliette	Off Target	Right Foot	Pass
28	8 NELLER Chloe	Incomplete - Blocked	Right Foot	Pass
32	19 SCANNAPIECO Dona	Deflected On Target - Saved	Right Foot	Pass
44	8 NELLER Chloe	Incomplete - Player On Ball Error	Right Foot	Other
48	19 SCANNAPIECO Dona	On Target - Goal	Right Foot	Other
66	14 DIAZ Hillary	On Target - Goal	Upper Body	Corner
71	15 MENDY Maeline	Incomplete - Blocked	Right Foot	Pass
71	17 CHOSSENOTTE Shana	Off Target	Right Foot	Loose Ball
72	20 JOSEPH Liana	Deflected On Target - Saved	Right Foot	Loose Ball
92	20 JOSEPH Liana	On Target - Saved	Right Foot	Loose Ball

Attempts at Goal



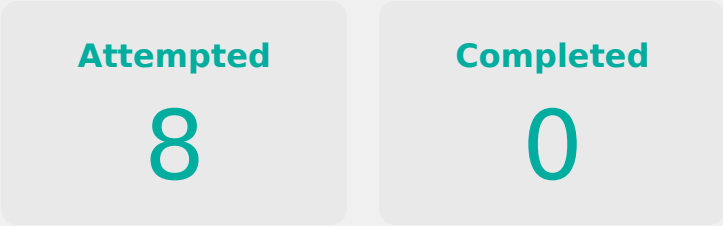
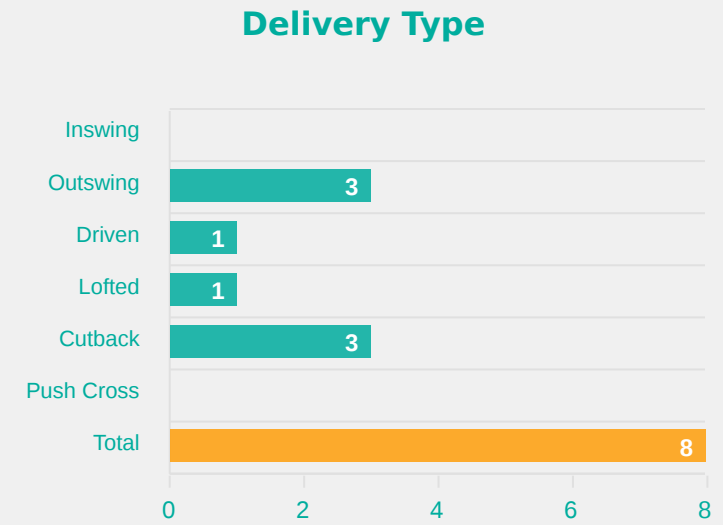
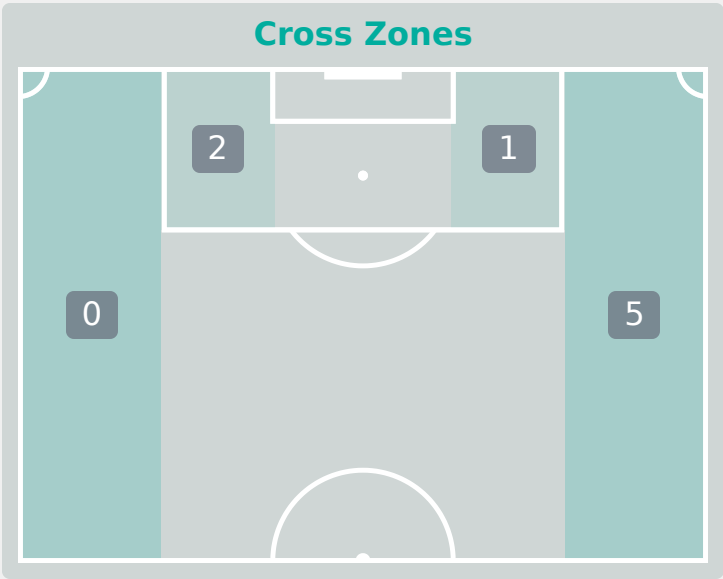
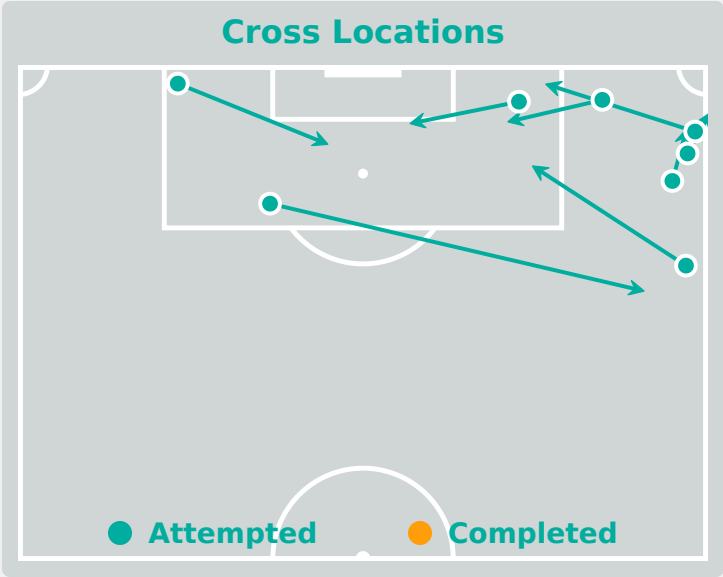
Key	Outcome	Shots
●	Goals	3
●	On Target	1
●	Off Target	4
●	Blocked	0
●	Incomplete	1

Attempts at Goal



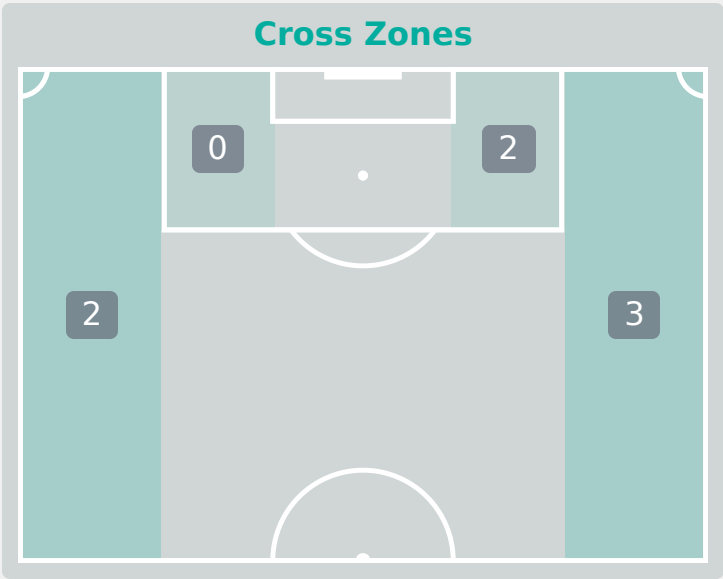
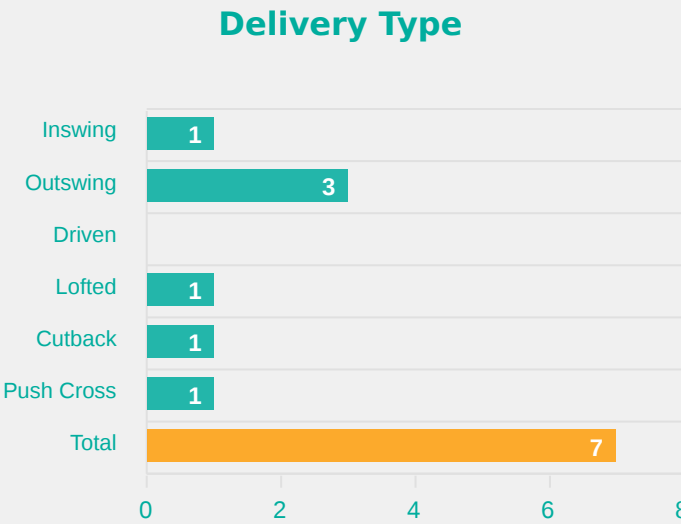
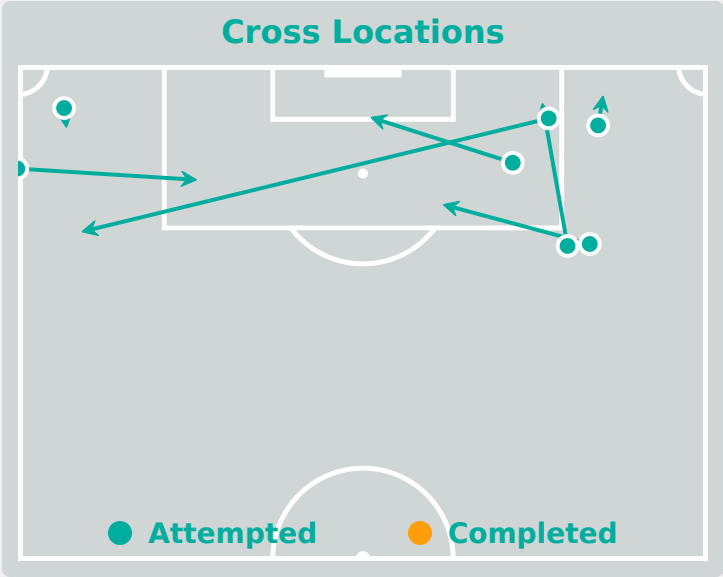
Time	Player	Outcome	Body Part	Delivery Type
3	9 ROSE Nyah	On Target - Goal	Right Foot	Pass
5	3 OTTEY Ella	Off Target	Right Foot	Corner
9	2 ARCHIBALD Mya	Off Target	Right Foot	Pass
21	4 MARKESINI Zoe	On Target - Goal	Right Foot	Corner
27	7 ALLEN Amanda	Off Target	Right Foot	Loose Ball
69	19 JOHNSON Anaya	On Target - Goal Prevented	Right Foot	Corner
75	11 CHUKWU Annabelle	Incomplete	Right Foot	Corner
83	11 CHUKWU Annabelle	On Target - Goal	Right Foot	Ball Progression
90	13 WATSON Renee	Off Target	Left Foot	Loose Ball

Crosses (Open Play)



#	Player	Inswing	Outswing	Driven	Lofted	Cutback	Push Cross	Total Attempted
1	BELHADJ Feerine	0	0	0	0	0	0	0
2	HAELEWYN Marion	0	0	0	0	0	0	0
6	SEGUIN Maelle	0	0	0	0	0	0	0
7	HAUGOU Pauline	0	1	1	1	0	0	3
8	NELLER Chloe	0	0	0	0	0	0	0
10	MOSSARD Juliette	0	0	0	0	0	0	0
11	FONTAINE Airine	0	0	0	0	0	0	0
12	SIERRA Pauline	0	0	0	0	0	0	0
13	NOTEL Lea	0	0	0	0	0	0	0
14	DIAZ Hillary	0	0	0	0	0	0	0
19	SCANNAPIECO Dona	0	1	0	0	0	0	1
15	MENDY Maeline	0	1	0	0	2	0	3
17	CHOSSENOTTE Shana	0	0	0	0	1	0	1
18	MENDY Melinda	0	0	0	0	0	0	0
20	JOSEPH Liana	0	0	0	0	0	0	0

Crosses (Open Play)



Attempted

7

Completed

0

Most Crosses Attempted

3

OTTEY Ella

LEFT BACK

#	Player	Inswing	Outswing	Driven	Lofted	Cutback	Push Cross	Total Attempted
1	FENWICK Faith	0	0	0	0	0	0	0
2	ARCHIBALD Mya	0	0	0	0	0	0	0
3	OTTEY Ella	1	2	0	0	0	0	3
4	MARKESINI Zoe	0	0	0	1	0	0	1
6	HERNANDEZ GRAY Jeneva	0	0	0	0	0	0	0
7	ALLEN Amanda	0	0	0	0	0	0	0
8	JOURDE Florianne	0	0	0	0	0	0	0
9	ROSE Nyah	0	0	0	0	0	0	0
10	SMITH Olivia	0	0	0	0	0	0	0
17	OKEKE Janet	0	0	0	0	0	1	1
19	JOHNSON Anaya	0	0	0	0	0	0	0
11	CHUKWU Annabelle	0	0	0	0	1	0	1
13	WATSON Renee	0	0	0	0	0	0	0
15	COLLIN Jadea	0	1	0	0	0	0	1
16	McBRIDE Ella	0	0	0	0	0	0	0
18	BRIGGS Kayla	0	0	0	0	0	0	0

Offering to Receive



101

Total Offers Made

33

Total Offers Received

Most Offers

35

MOSSARD Juliette

RIGHT CENTRE MIDFIELD

36

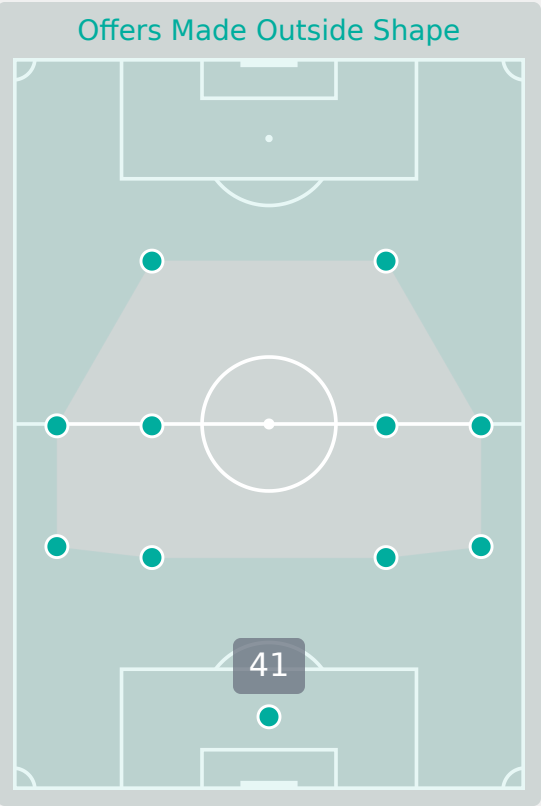
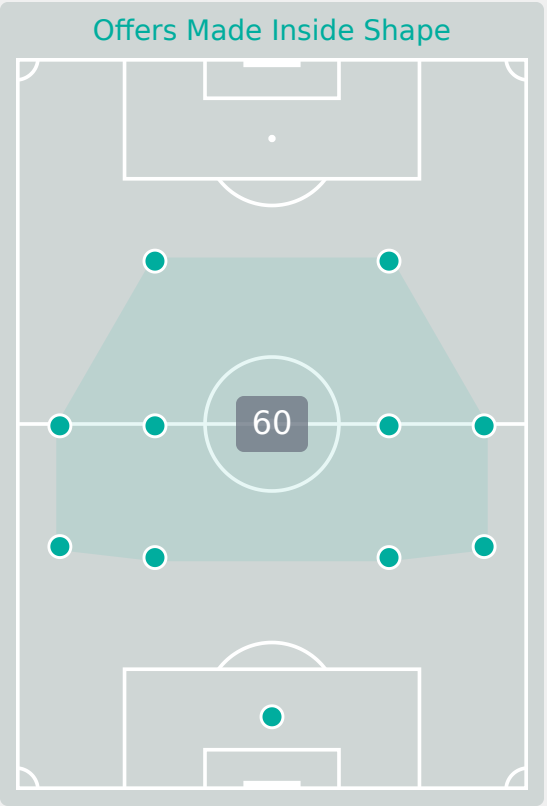
Offers Made in Final Third

47

Offers Made in Middle Third

18

Offers Made in Defensive Third



#	Player	Offers Made	Offers Received	% Made & Received
1	BELHADJ Feerine	4	4	100%
2	HAELEWYN Marion	2	0	0%
6	SEGUIN Maelle	6	2	33.3%
7	HAUGOU Pauline	8	1	12.5%
8	NELLER Chloe	5	1	20%
10	MOSSARD Juliette	35	6	17.1%
11	FONTAINE Airine	2	2	100%
12	SIERRA Pauline	1	0	0%
13	NOTEL Lea	5	2	40%
14	DIAZ Hillary	1	0	0%
19	SCANNAPIECO Dona	6	3	50%
15	MENDY Maeline	13	7	53.8%
17	CHOSSENOTTE Shana	5	1	20%
18	MENDY Melinda	5	2	40%
20	JOSEPH Liana	3	2	66.7%

Offering to Receive



170

Total Offers Made

62

Total Offers Received

Most Offers

30

SMITH Olivia

ATTACKING MIDFIELD LEFT

60

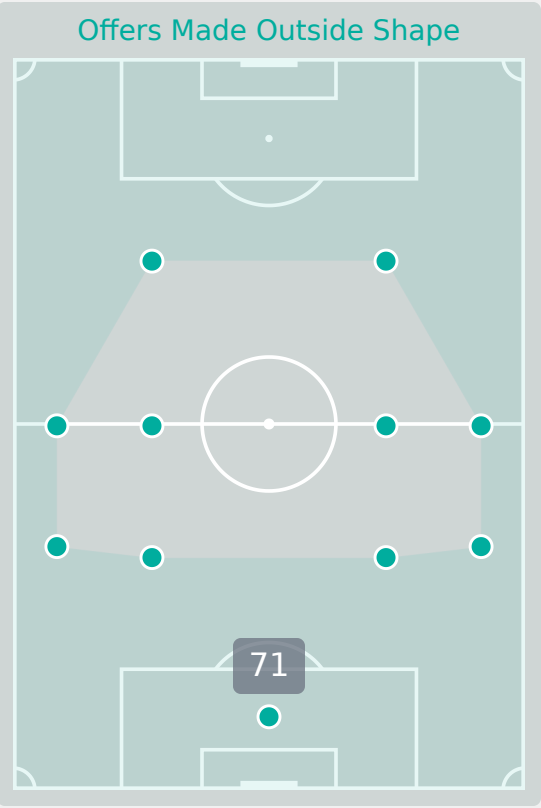
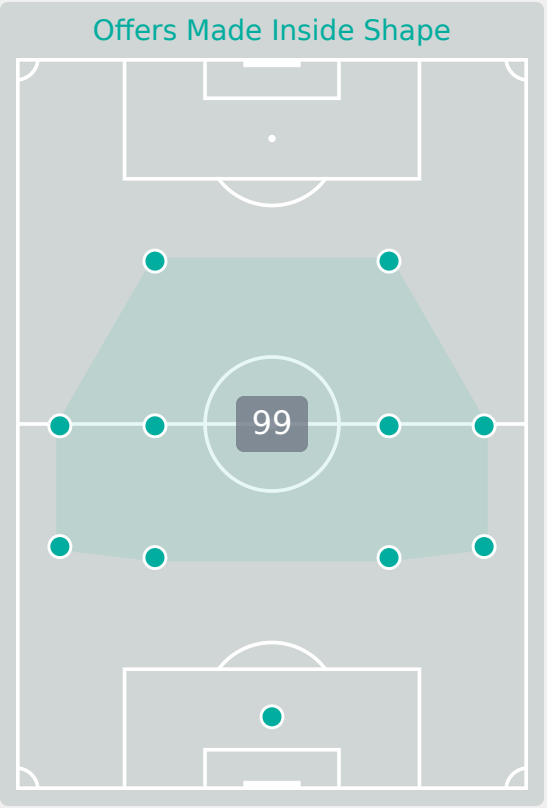
Offers Made in Final Third

77

Offers Made in Middle Third

33

Offers Made in Defensive Third



#	Player	Offers Made	Offers Received	% Made & Received
1	FENWICK Faith	9	5	55.6%
2	ARCHIBALD Mya	11	4	36.4%
3	OTTEY Ella	9	6	66.7%
4	MARKESINI Zoe	1	0	0%
6	HERNANDEZ GRAY Jeneva	27	8	29.6%
7	ALLEN Amanda	14	4	28.6%
8	JOURDE Florianne	11	3	27.3%
9	ROSE Nyah	6	5	83.3%
10	SMITH Olivia	30	8	26.7%
17	OKEKE Janet	1	1	100%
19	JOHNSON Anaya	23	7	30.4%
11	CHUKWU Annabelle	1	1	100%
13	WATSON Renee	7	1	14.3%
15	COLLIN Jadea	10	6	60%
16	McBRIDE Ella	0	0	0%
18	BRIGGS Kayla	10	3	30%

Movement to Receive

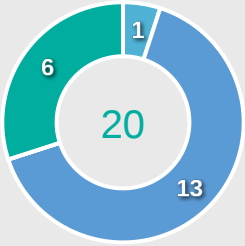


Movement Types by Phase

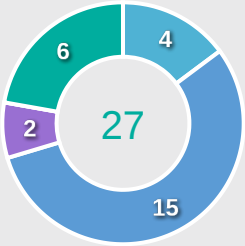
Final Third Phase



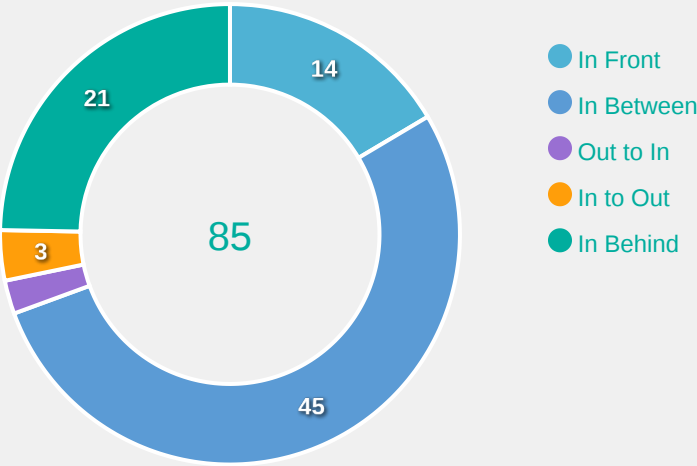
Progression Phase



Build Up Phase



All Movement Types

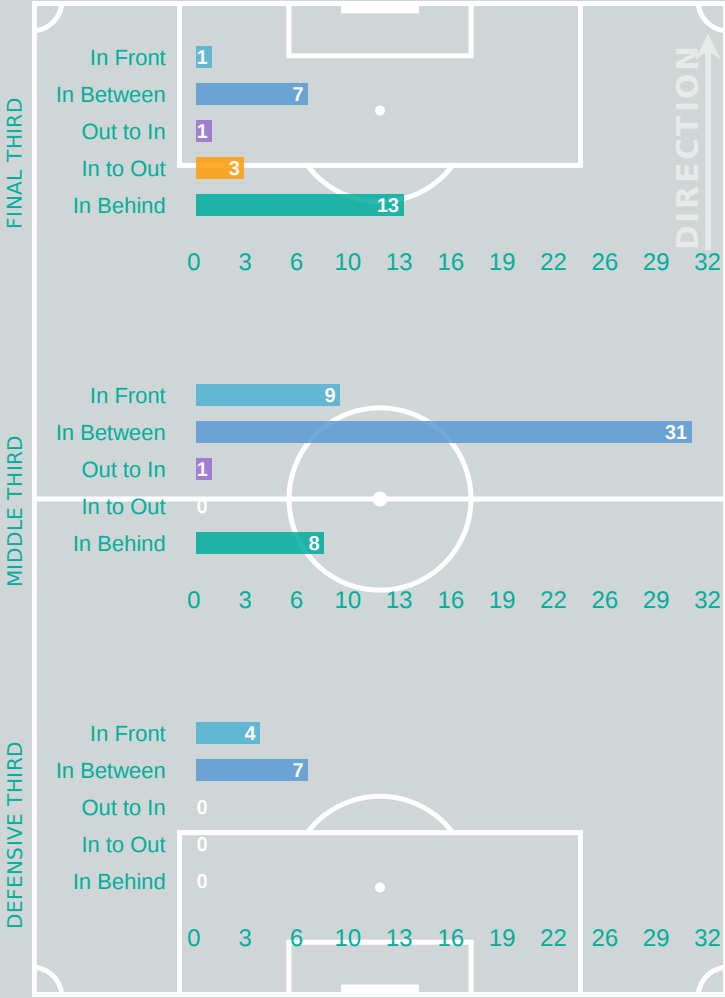


- In Front
- In Between
- Out to In
- In to Out
- In Behind

Top Ranked Players

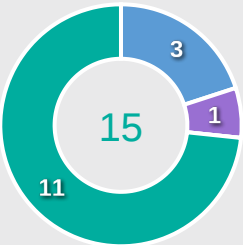
Type	Player	Movements
In Front	7 HAUGOU Pauline	3
In Between	10 MOSSARD Juliette	23
Out to In	7 HAUGOU Pauline	1
In to Out	10 MOSSARD Juliette	2
In Behind	10 MOSSARD Juliette	6

Movement Types Pitch Third

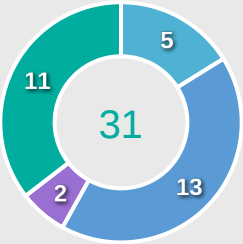


Movement Types by Phase

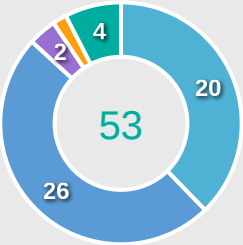
Final Third Phase



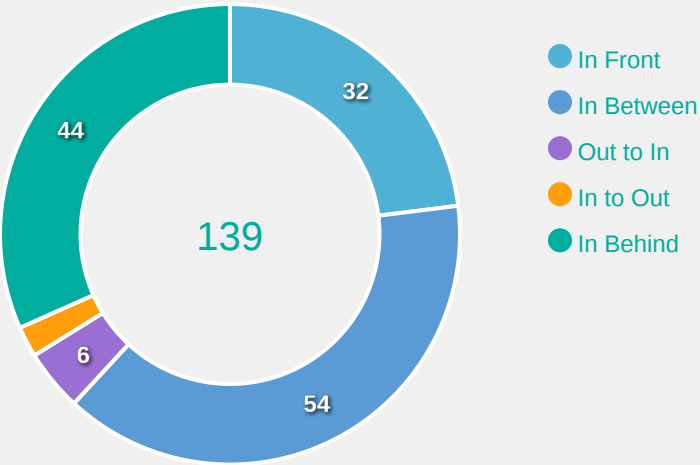
Progression Phase



Build Up Phase



All Movement Types

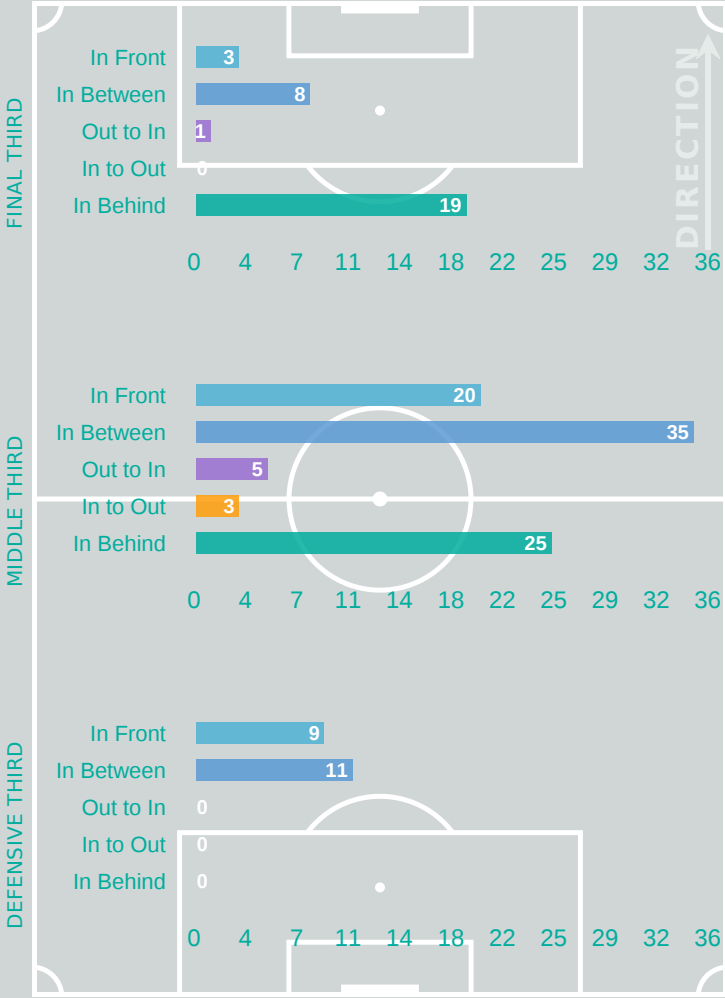


- In Front
- In Between
- Out to In
- In to Out
- In Behind

Top Ranked Players

Type	Player	Movements
In Front	6 HERNANDEZ GRAY Jeneva	9
In Between	6 HERNANDEZ GRAY Jeneva	14
Out to In	7 ALLEN Amanda	2
In to Out	15 COLLIN Jadea	2
In Behind	10 SMITH Olivia	16

Movement Types Pitch Third





OUT OF POSSESSION

France 3 – 3 Canada

Defensive Actions

50

Forced Turnovers

68

Possession Regained

5

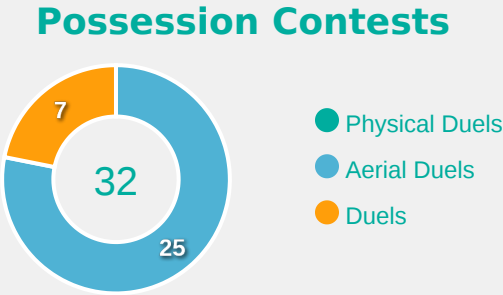
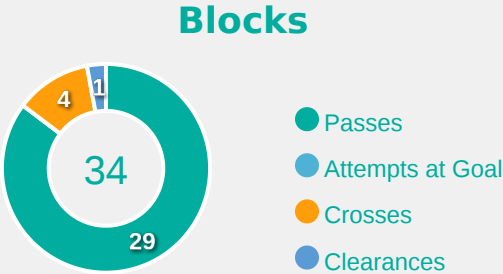
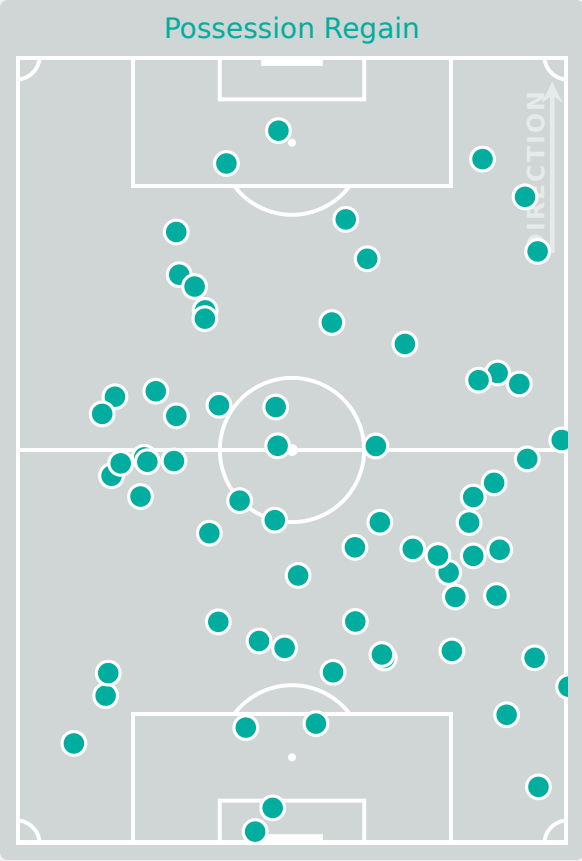
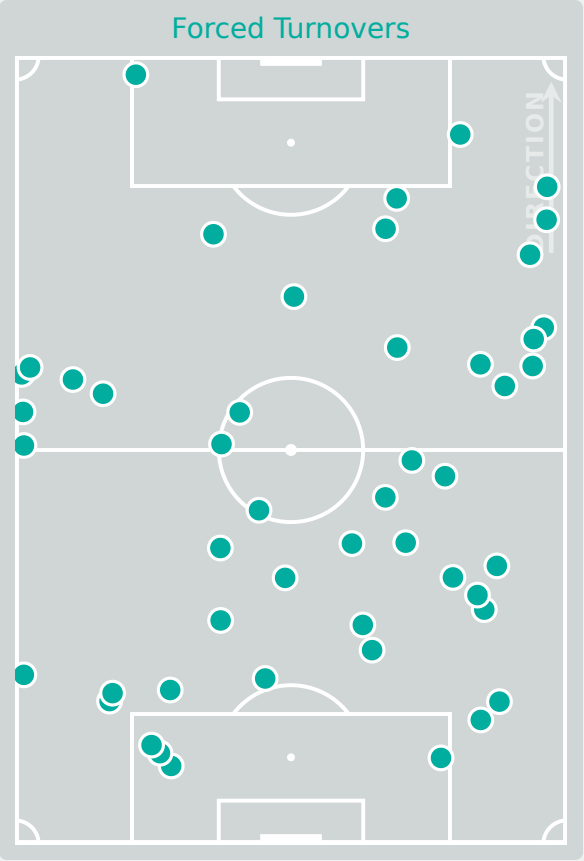
Interceptions

52

Tackles

2.76

Possession Actions / Defensive Action



Most Possession Regains

11

NOTEL Lea

LEFT BACK



#	Player	Total Possession Regains
1	BELHADJ Feerine	2
2	HAELEWYN Marion	8
6	SEGUIN Maelle	8
7	HAUGOU Pauline	5
8	NELLER Chloe	0
10	MOSSARD Juliette	5
11	FONTAINE Airine	1
12	SIERRA Pauline	7
13	NOTEL Lea	11
14	DIAZ Hillary	9
19	SCANNAPIECO Dona	1
15	MENDY Maeline	5
17	CHOSSENOTTE Shana	0
18	MENDY Melinda	5
20	JOSEPH Liana	1

Defensive Actions



61

Forced Turnovers

62

Possession Regained

7

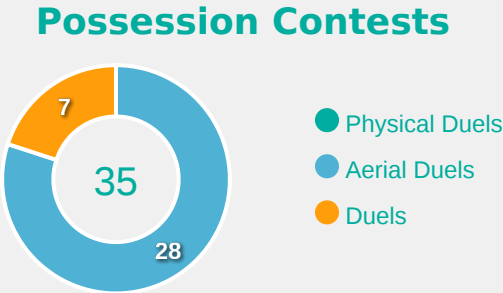
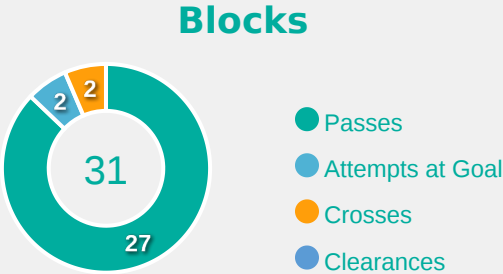
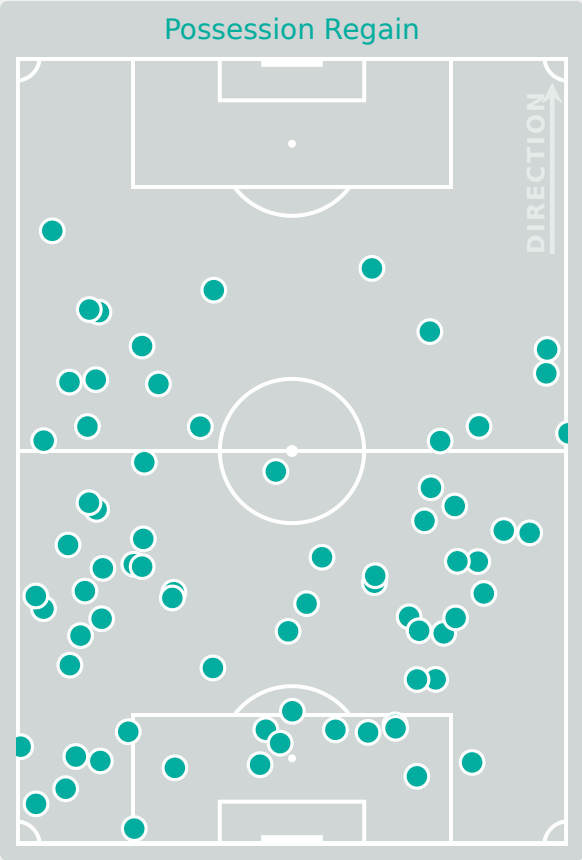
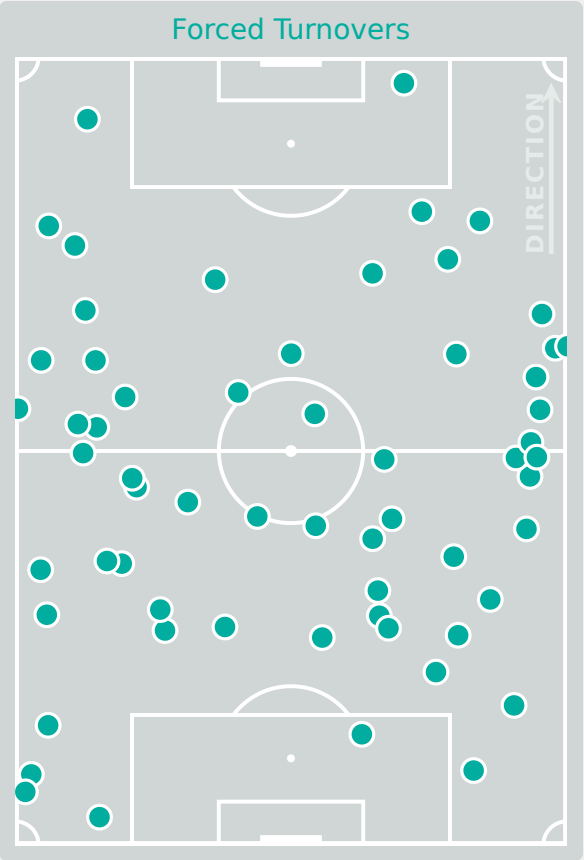
Interceptions

41

Tackles

3.38

Possession Actions / Defensive Action



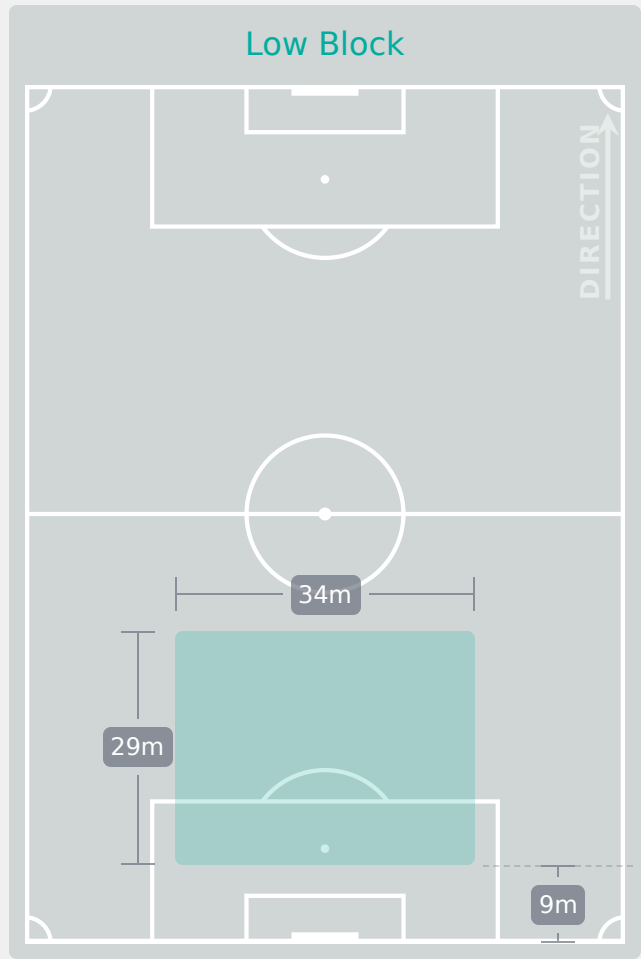
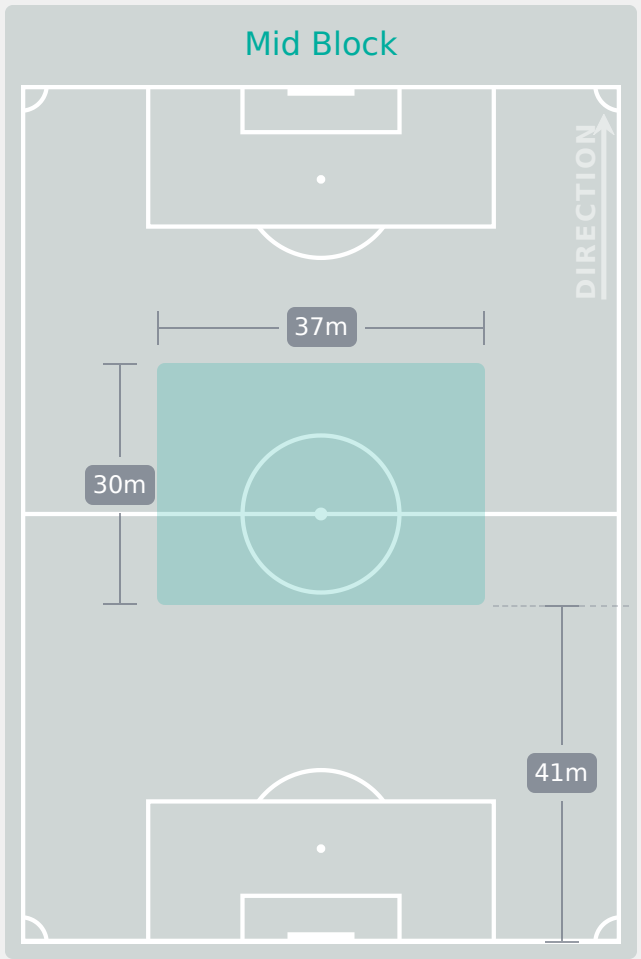
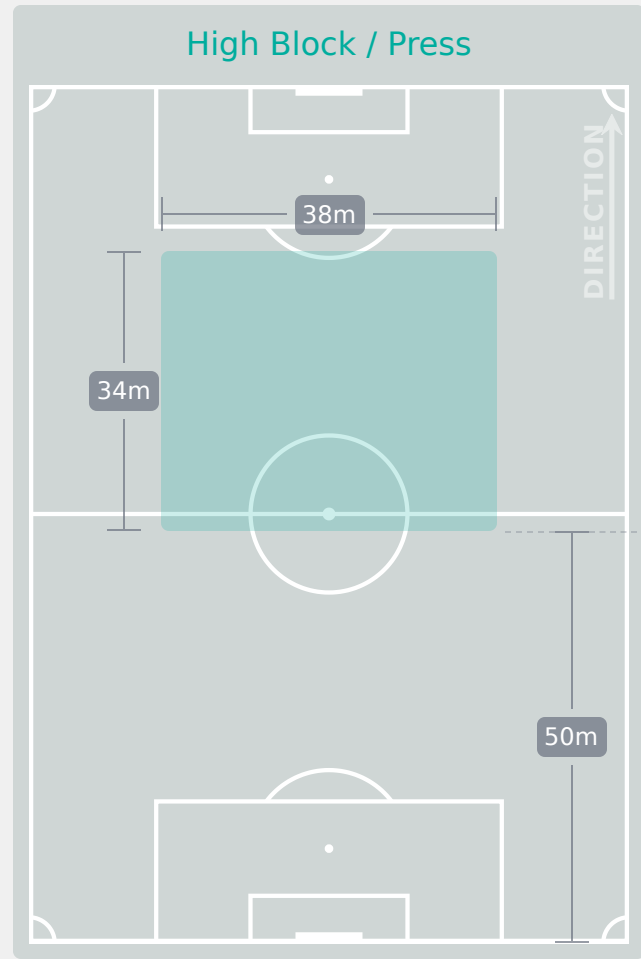
Most Possession Regains

12

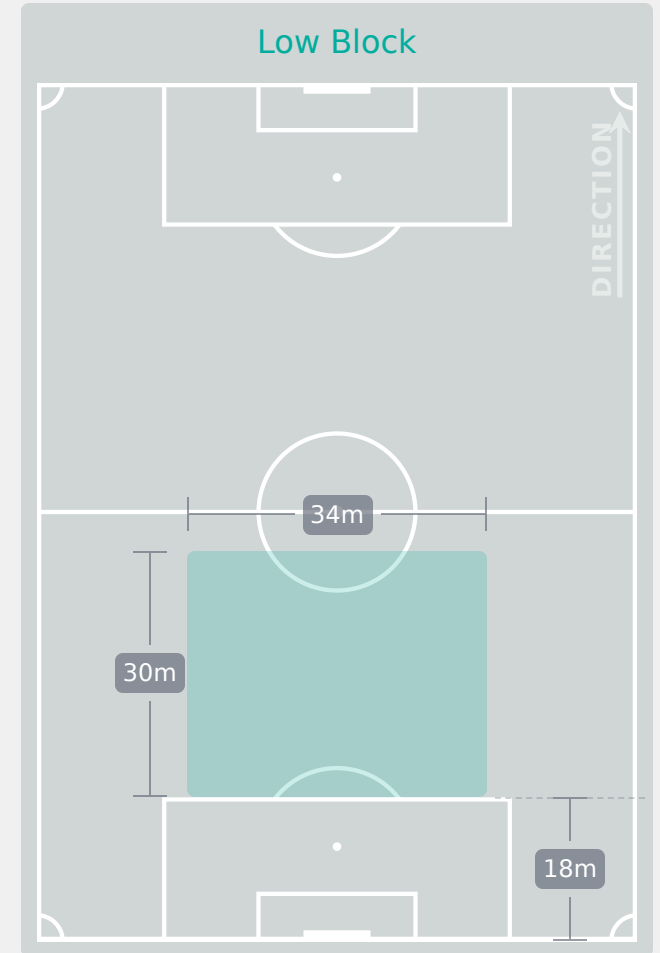
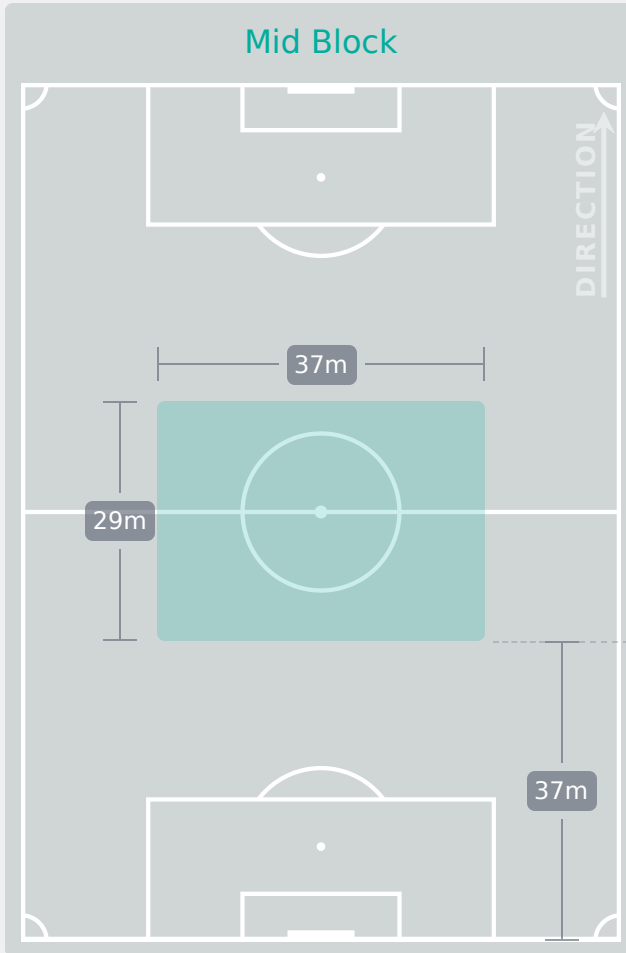
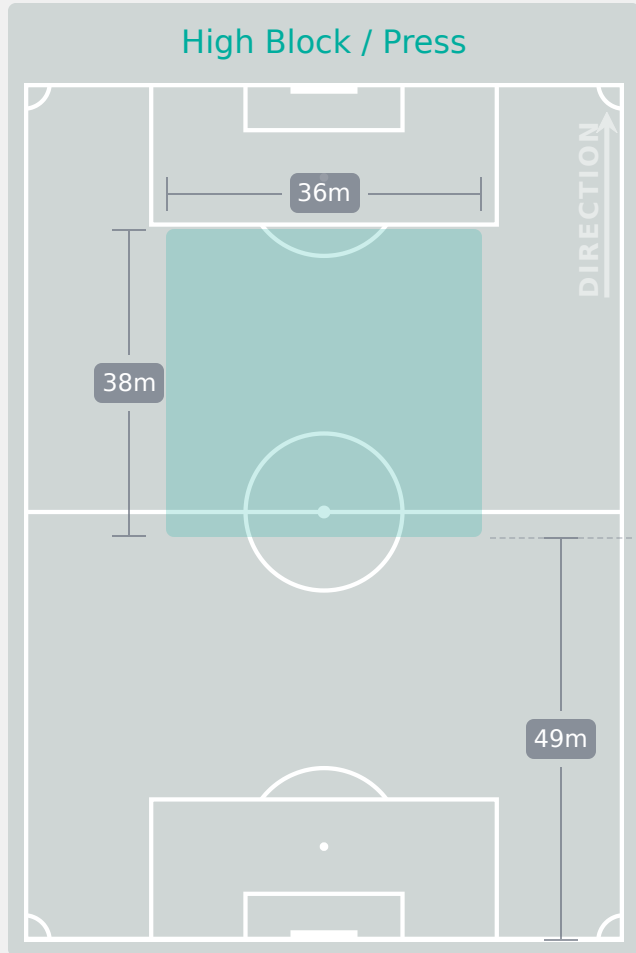
FENWICK Faith
GOALKEEPER

#	Player	Total Possession Regains
1	FENWICK Faith	12
2	ARCHIBALD Mya	8
3	OTTEY Ella	6
4	MARKESINI Zoe	7
6	HERNANDEZ GRAY Jeneva	6
7	ALLEN Amanda	0
8	JOURDE Florianne	4
9	ROSE Nyah	0
10	SMITH Olivia	2
17	OKEKE Janet	6
19	JOHNSON Anaya	6
11	CHUKWU Annabelle	1
13	WATSON Renee	0
15	COLLIN Jadea	2
16	McBRIDE Ella	1
18	BRIGGS Kayla	1

Defensive Line Height & Team Length



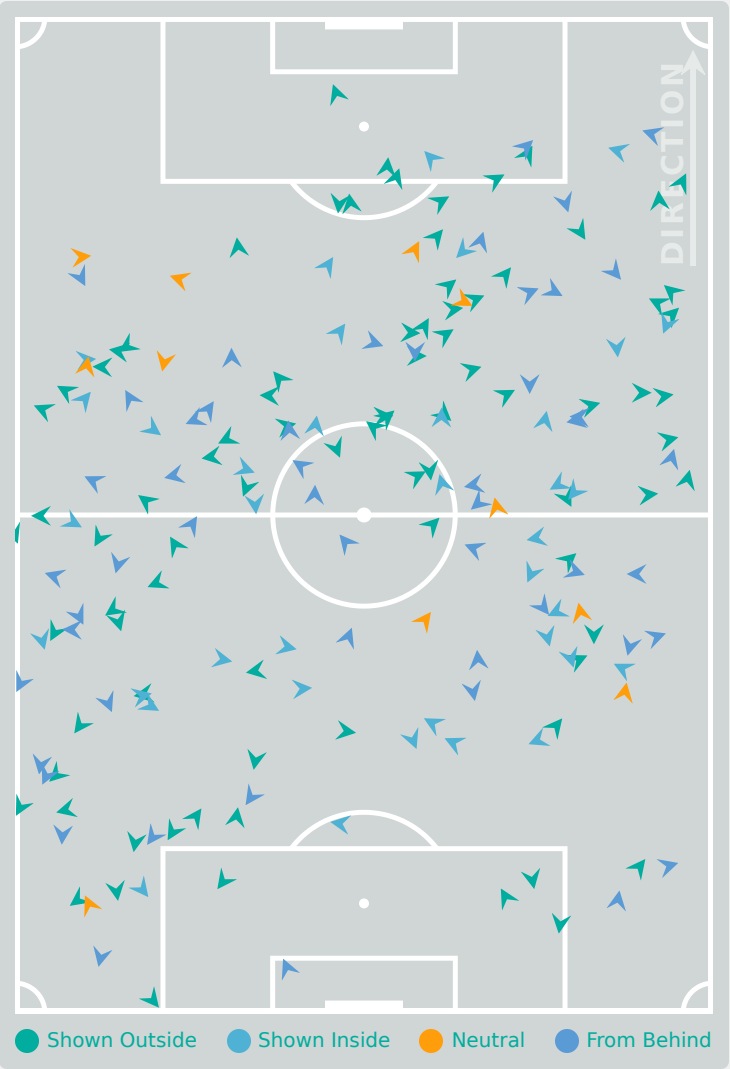
Defensive Line Height & Team Length



Defensive Pressure

France

Canada



184	Total Pressures	131
69	Direct Pressures	41
1.79s	Avg Pressure Duration	1.41s
50	Forced Turnovers	61
7.21s	Ball Recovery Time	7.1s
53	Pushing on into Pressing	34
118	Pushing on	65
37	Pressing Direction Inside	28
85	Pressing Direction Outside	76

Most Direct Pressures

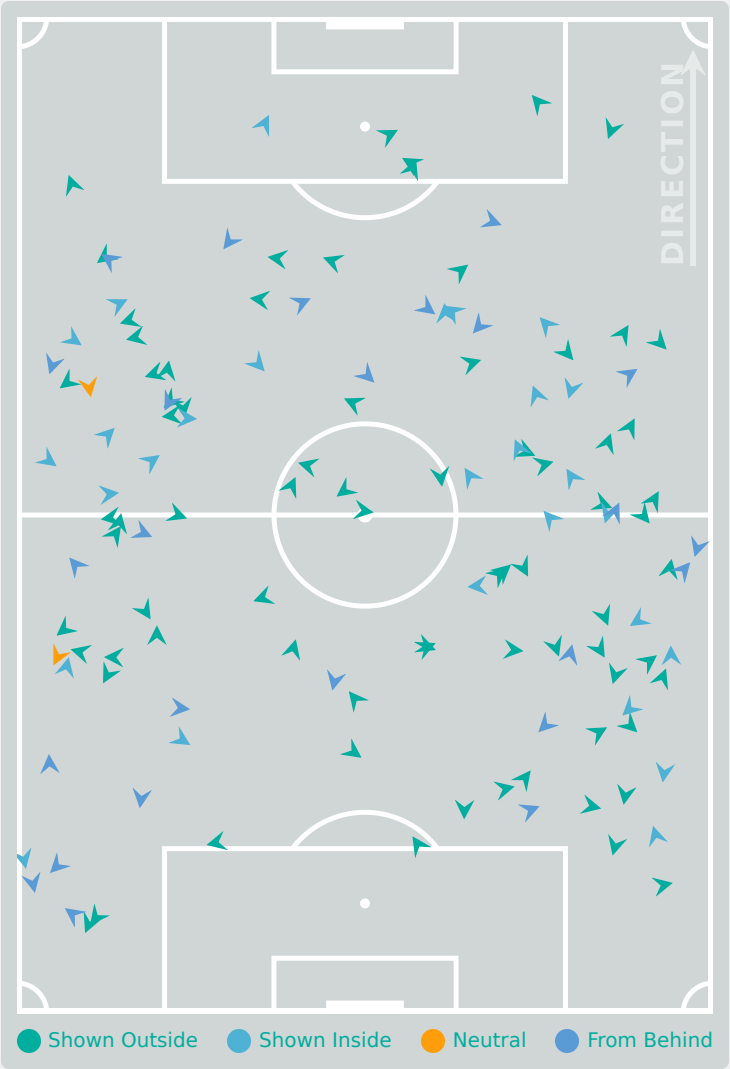
15

NOTEL Lea
LEFT BACK

Most Direct Pressures

8

ARCHIBALD Mya
RIGHT BACK





GOALKEEPING

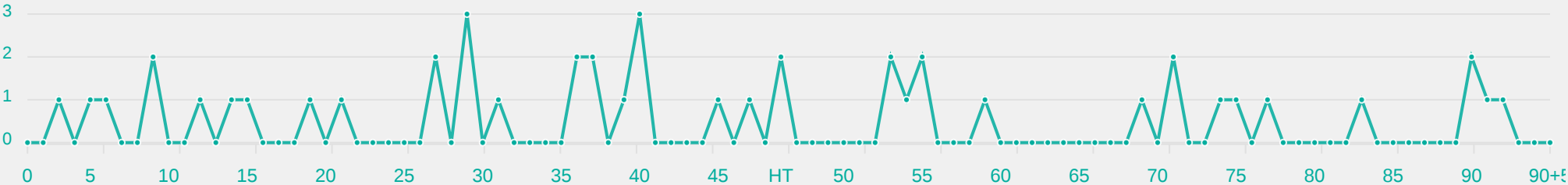
France 3 – 3 Canada

Goalkeeping Involvement



France

France GK Involvement Timeline



45

Total Involvements



Canada

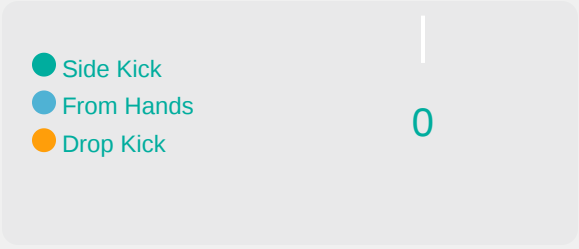
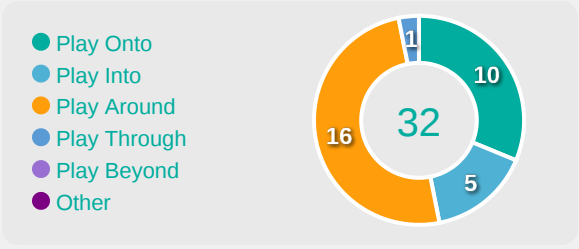
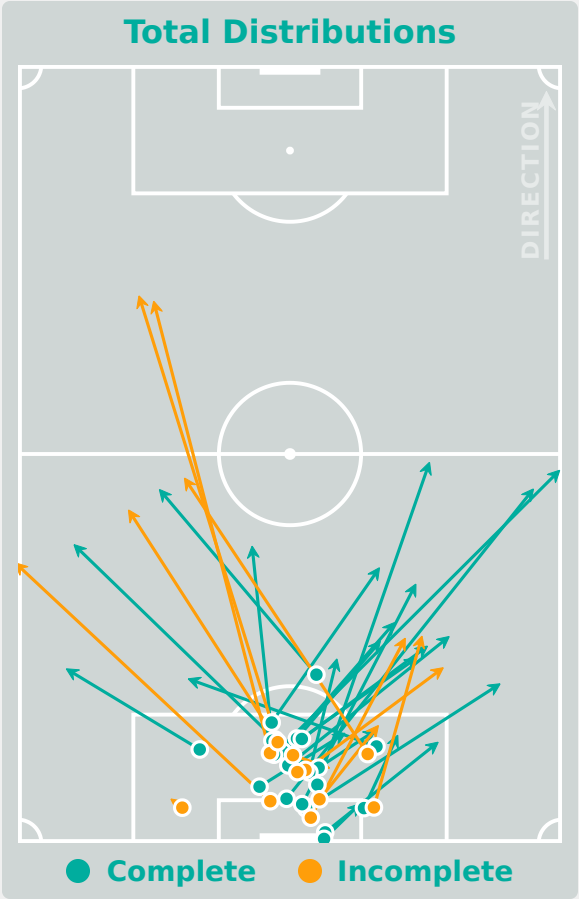
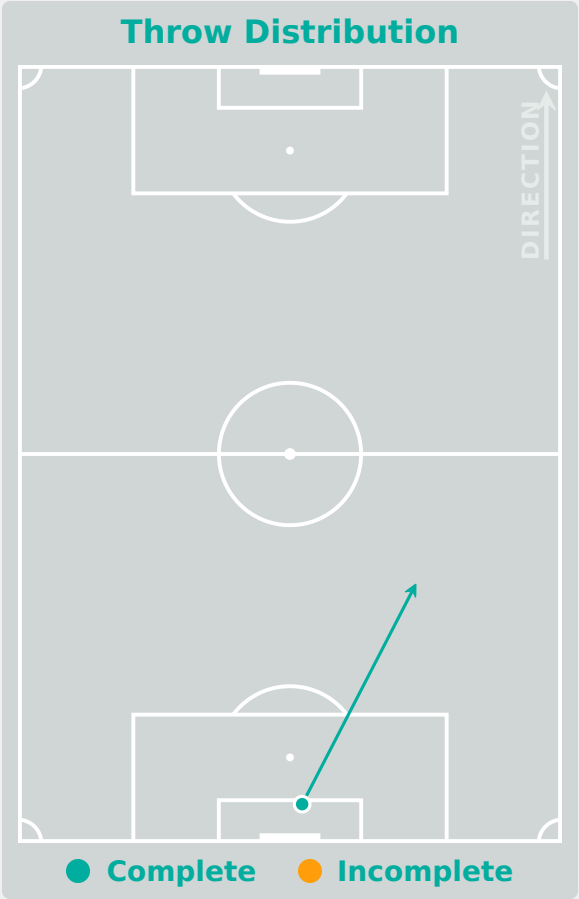
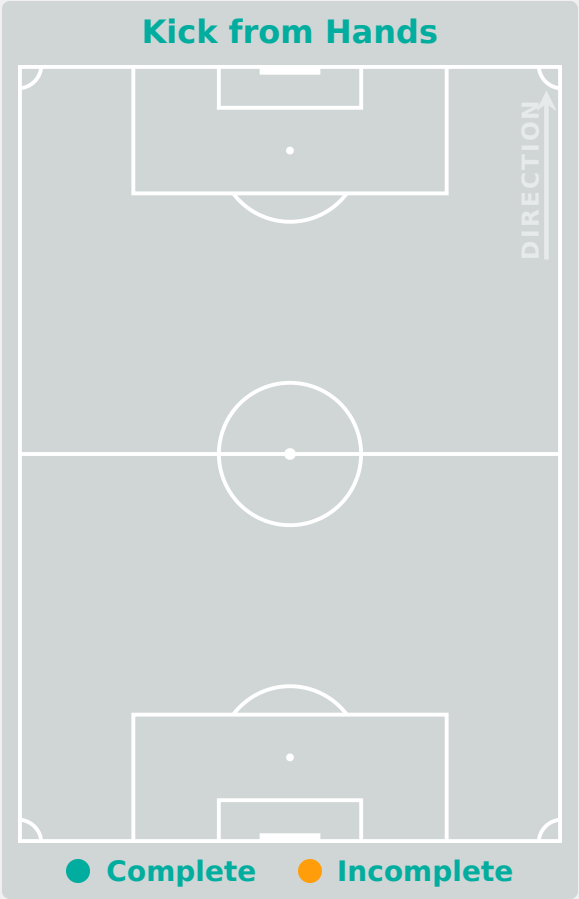
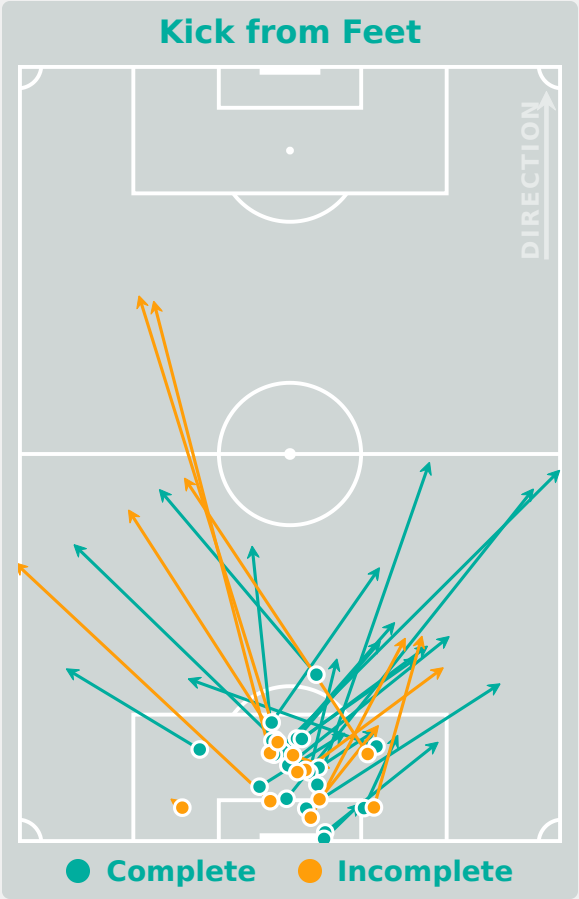
Canada GK Involvement Timeline



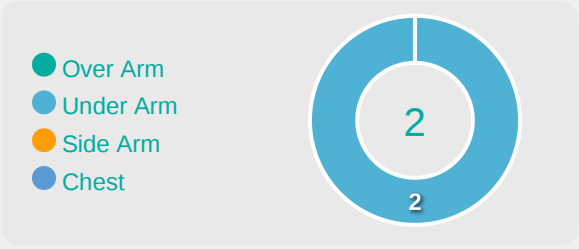
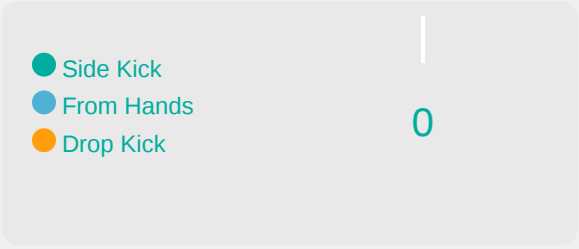
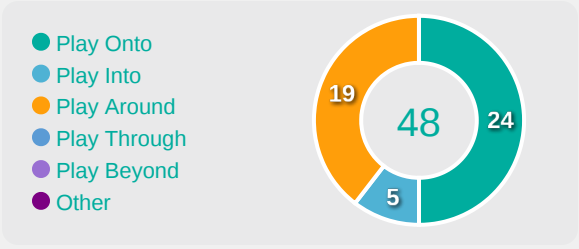
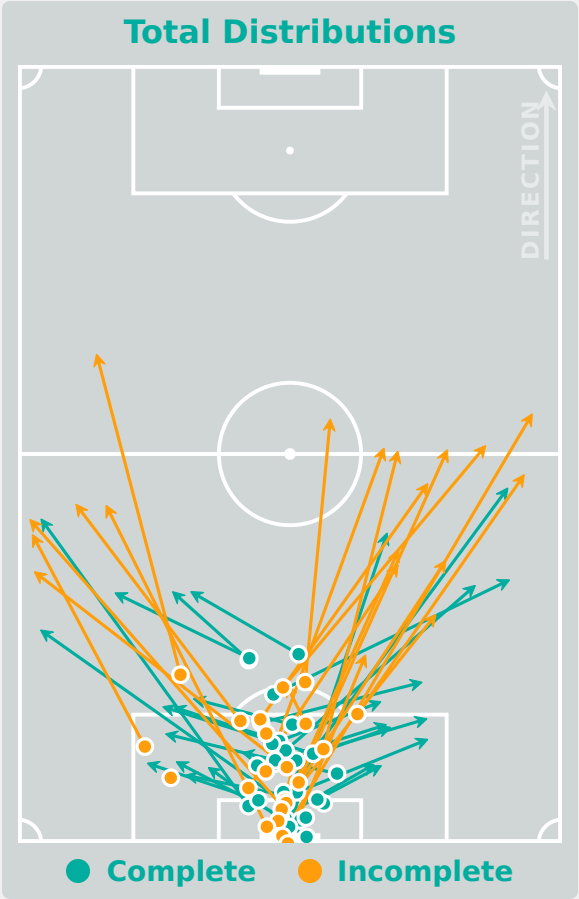
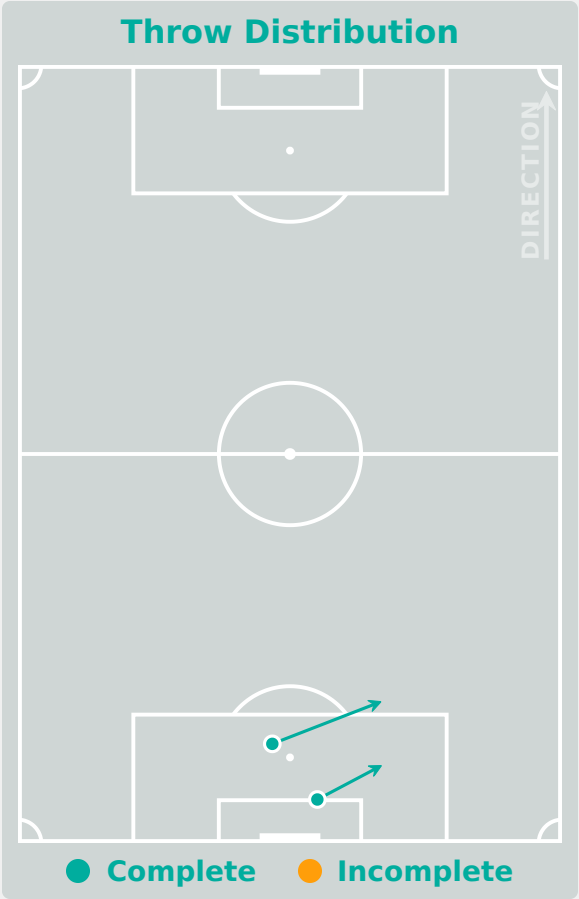
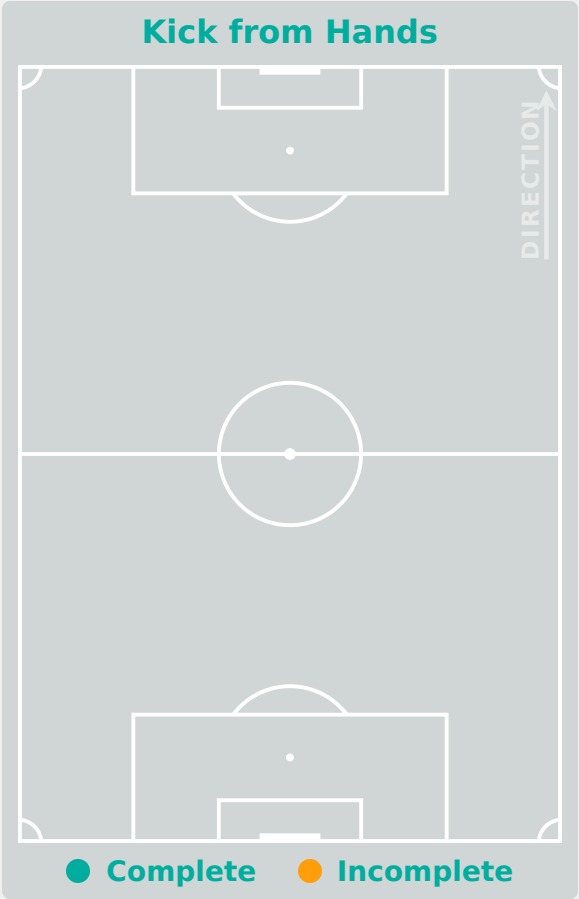
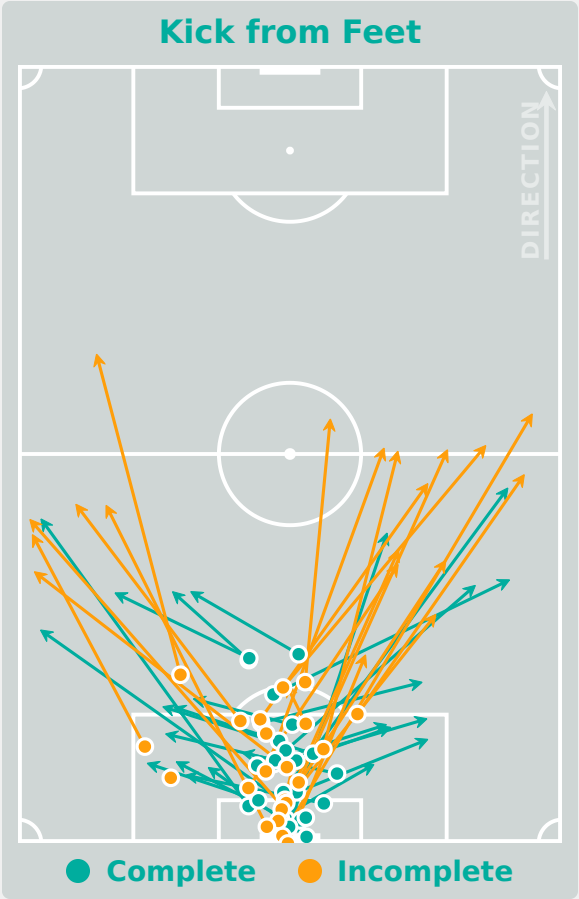
63

Total Involvements

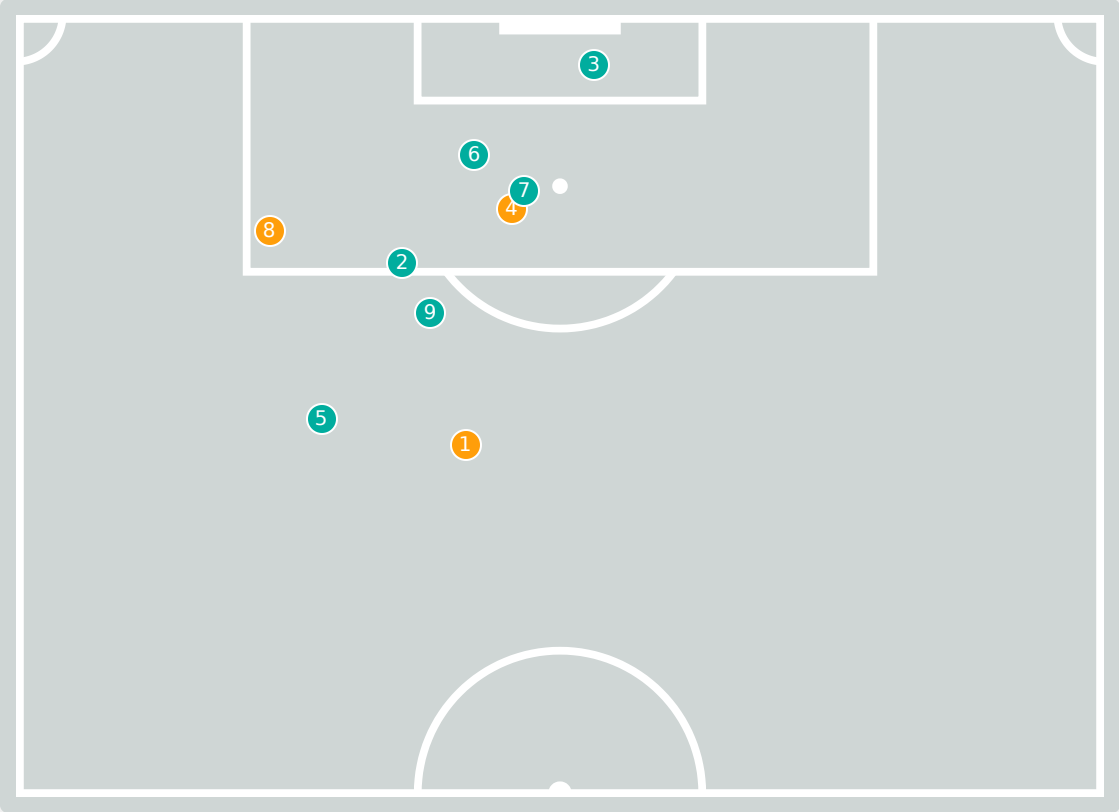
Goalkeeping Distribution



Goalkeeping Distribution



Goal Prevention

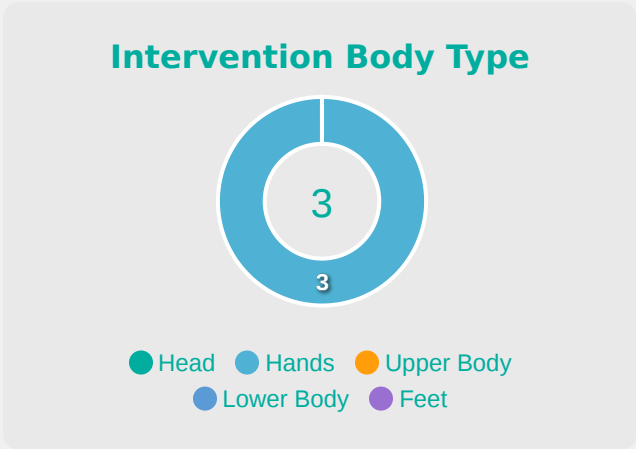
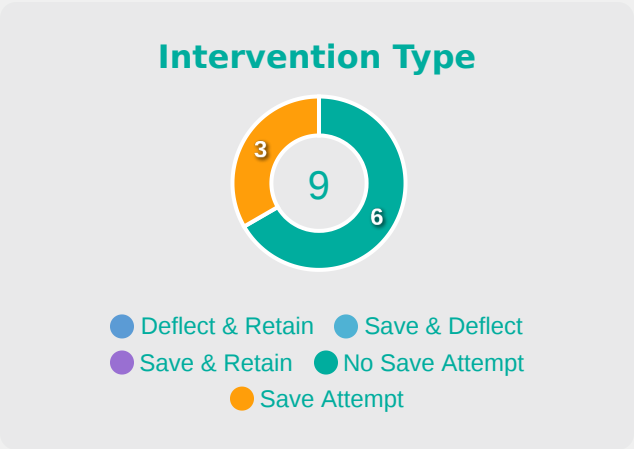
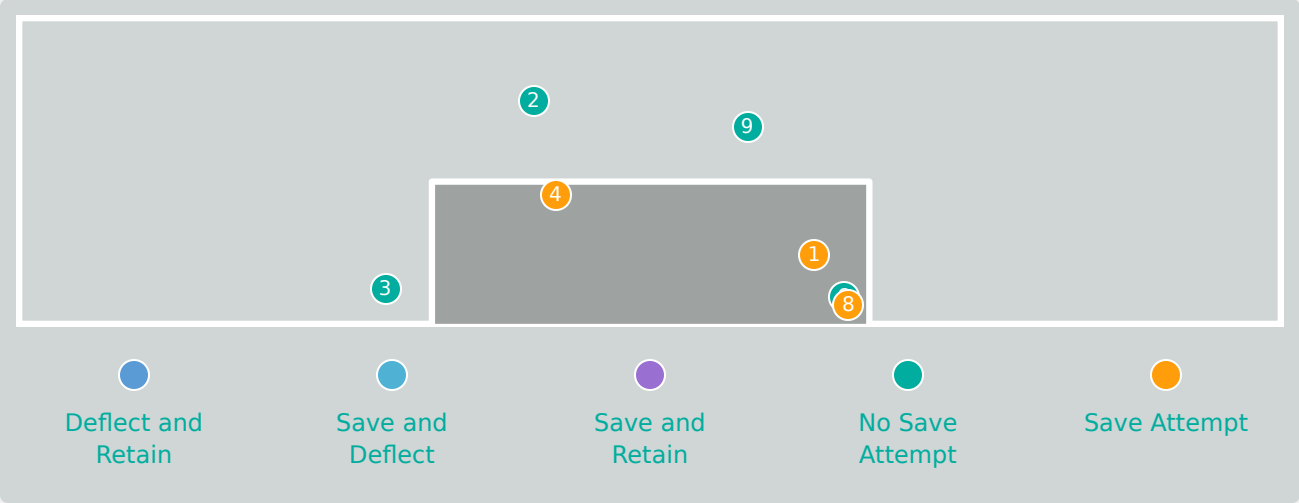


9

Total Attempts on Goal Faced

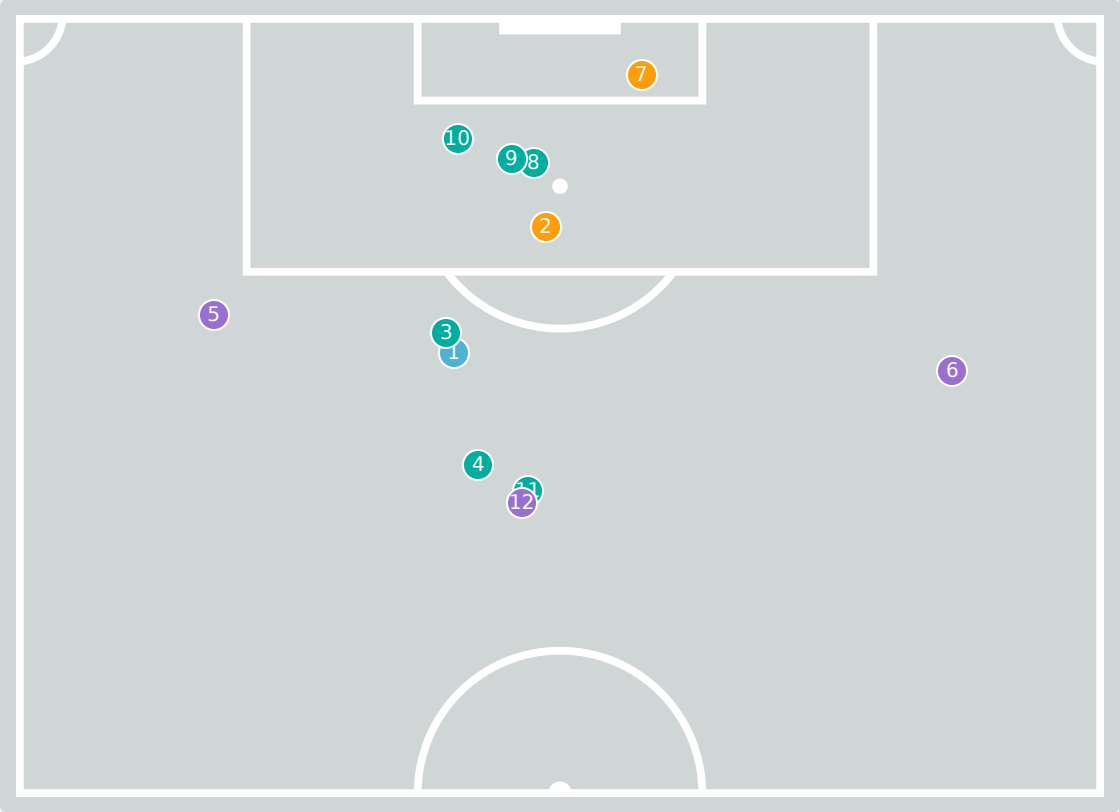
0

Save %



Total Attempts on Goal Faced	Total Goal Interventions	Save & Retain	Deflect & Retain	Save & Deflect	Save Attempt	No Save Attempt
9	0	0	0	0	3	6

Goal Prevention

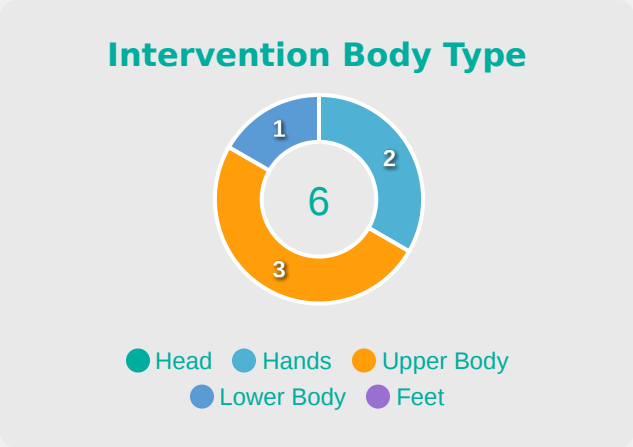
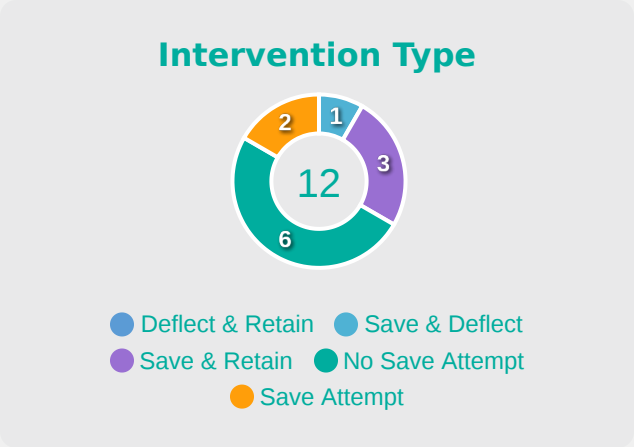
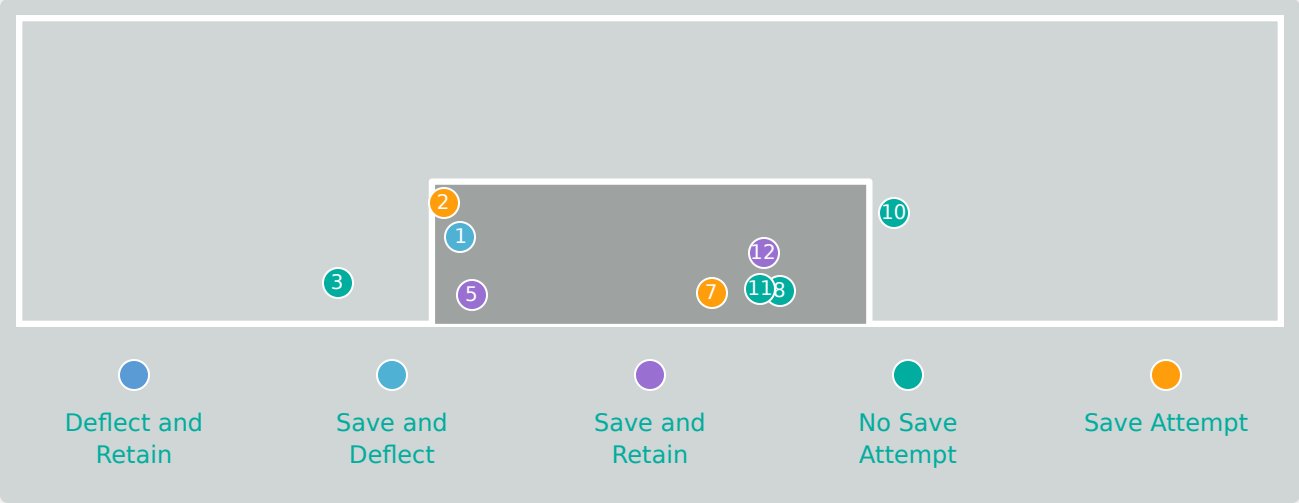


12

Total Attempts on Goal Faced

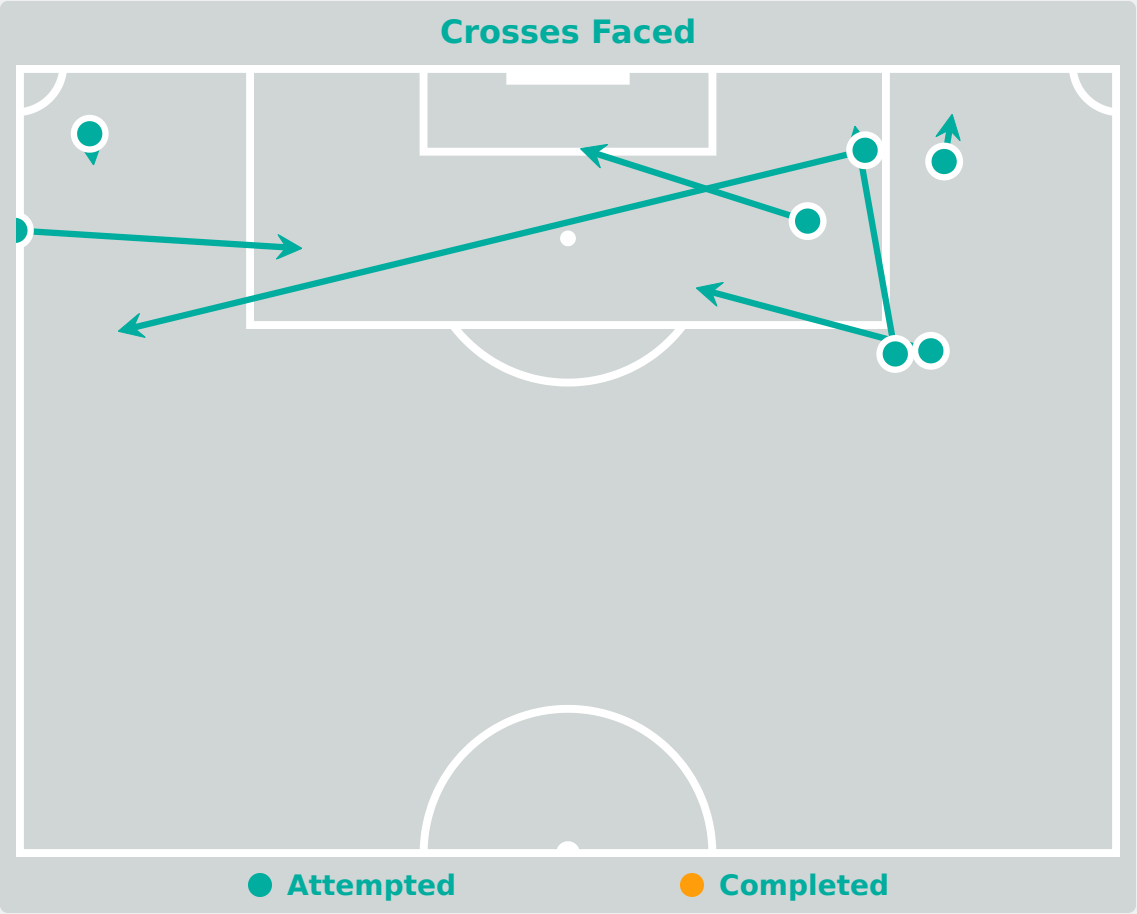
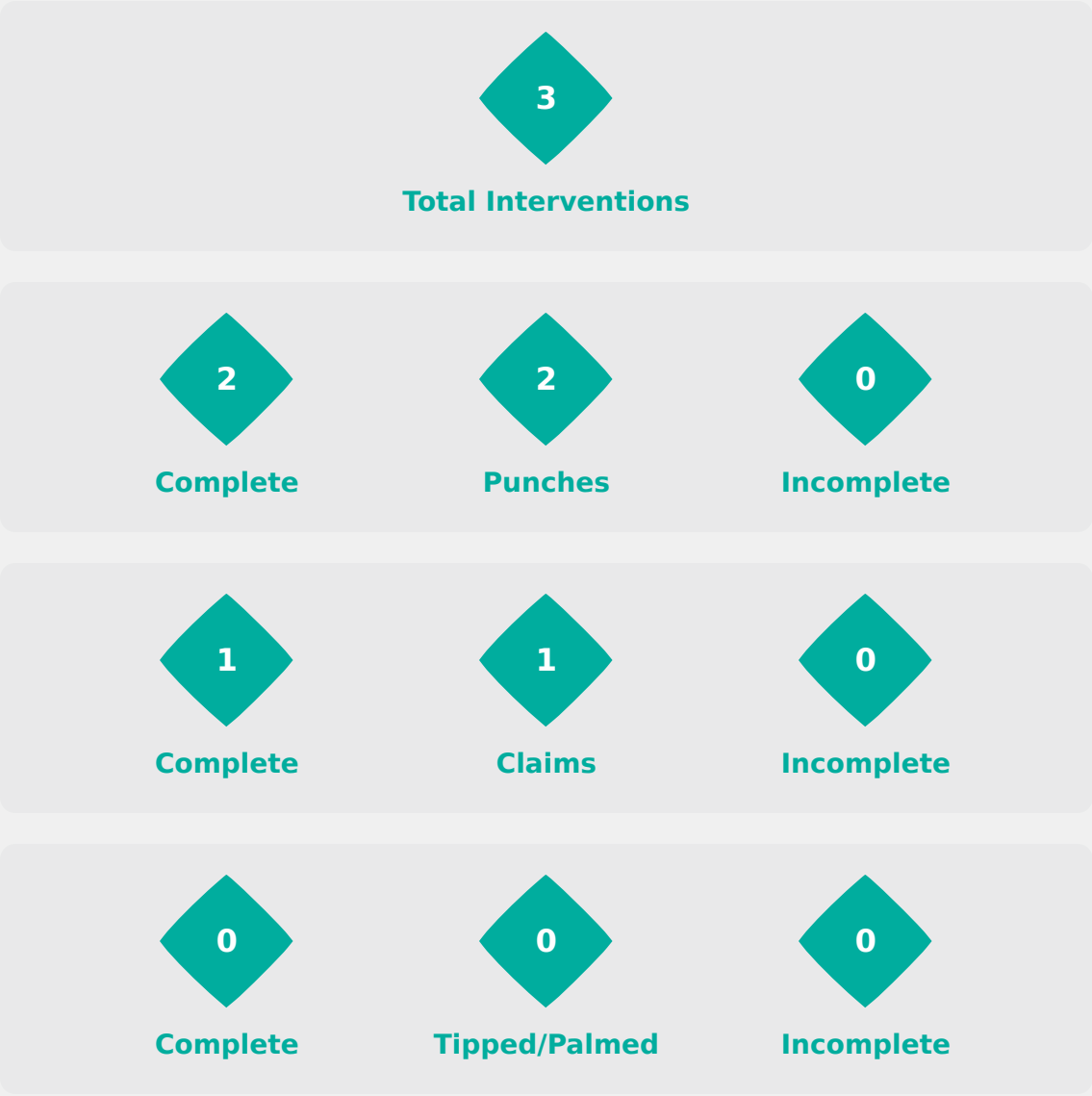
43

Save %



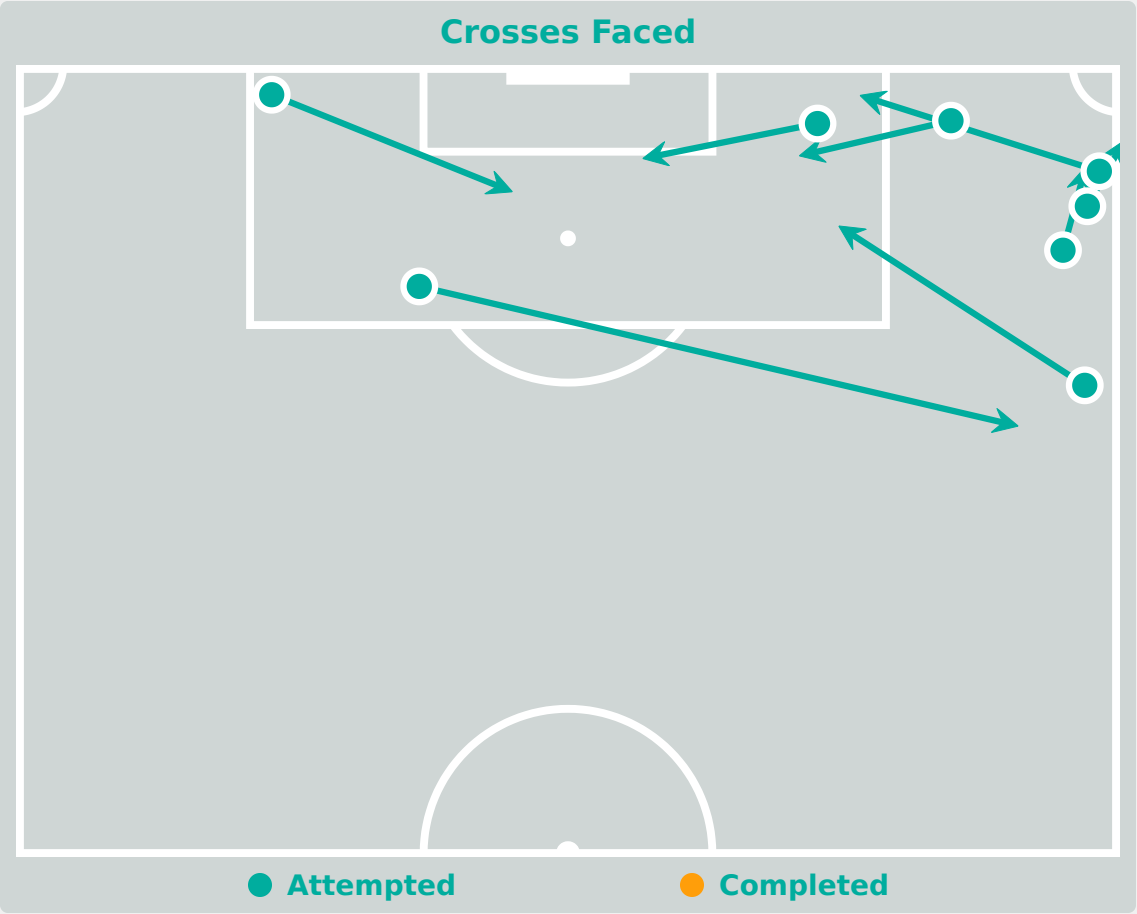
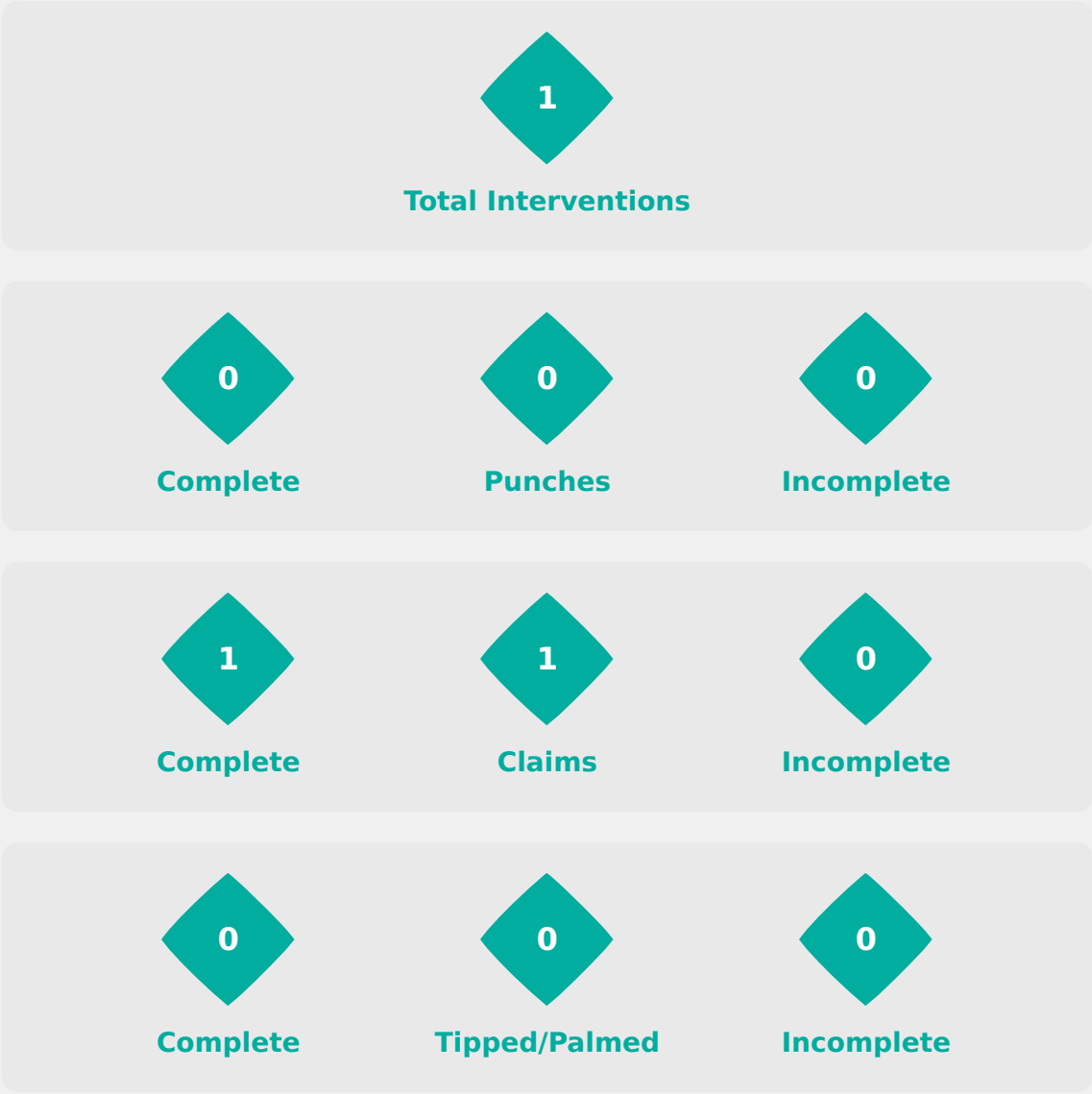
Total Attempts on Goal Faced	Total Goal Interventions	Save & Retain	Deflect & Retain	Save & Deflect	Save Attempt	No Save Attempt
12	4	3	0	1	2	6

Aerial Control



Delivery Types Faced						
Total	In Swing	Out Swing	Driven	Lofted	Cutback	Push
16	6	7	0	1	1	1

Aerial Control



Delivery Types Faced						
Total	In Swing	Out Swing	Driven	Lofted	Cutback	Push
12	0	6	1	2	3	0



SET PLAYS

France 3 – 3 Canada

Set Plays



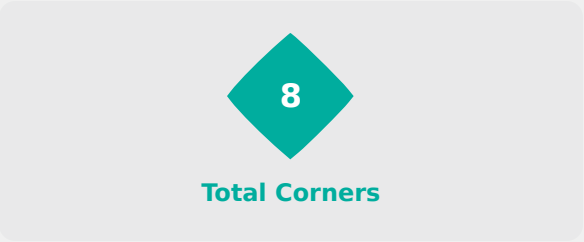
Free Kicks	
Type	Total
Direct	7
Direct (on target)	0
Direct (off target)	0
Indirect	3

Corners			
Delivery Type	From Left Side	From Right Side	Total
Direct to Area	2	1	3
Short	0	0	0

Edge of Penalty Area	0	0	0
----------------------	---	---	---

Corners	
Delivery Style	Total
Inswing	0
Outswing	3
Driven	0

Set Plays



Free Kicks	
Type	Total
Direct	7
Direct (on target)	0
Direct (off target)	0
Indirect	1

Corners			
Delivery Type	From Left Side	From Right Side	Total
Direct to Area	2	6	8
Short	0	0	0
Edge of Penalty Area	0	0	0

Corners	
Delivery Style	Total
Inswing	5
Outswing	3
Driven	0



INDIVIDUAL DATA IN POSSESSION

France 3 - 3 Canada

In Possession - Distributions



#	Player	Passes Attempted	Passes Completed	Pass Completion %	Switches of Play	Crosses Attempted	Crosses Completed	Line Breaks Attempted	Line Breaks Completed	Line Break Completion %	Ball Progressions	Take Ons	Step Ins	Attempts at Goal	Goals
1	BELHADJ Feerine	33	22	67%	0	0	0	10	6	60%	0	0	0	0	0
2	HAELEWYN Marion	44	38	86%	0	1	0	19	16	84%	0	0	0	0	0
6	SEGUIN Maelle	27	20	74%	0	0	0	9	5	56%	0	0	0	0	0
7	HAUGOU Pauline	32	17	53%	0	3	0	11	5	45%	3	3	0	0	0
8	NELLER Chloe	24	19	79%	0	0	0	3	3	100%	0	0	0	2	0
10	MOSSARD Juliette	15	11	73%	0	0	0	2	0	0%	1	1	0	2	0
11	FONTAINE Airine	11	9	82%	0	0	0	0	0	0%	0	0	0	0	0
12	SIERRA Pauline	40	27	68%	0	0	0	6	5	83%	0	0	0	0	0
13	NOTEL Lea	47	38	81%	0	0	0	22	17	77%	0	0	0	0	0
14	DIAZ Hillary	28	23	82%	0	0	0	5	4	80%	0	0	0	1	1
19	SCANNAPIECO Dona	12	5	42%	0	1	0	1	0	0%	0	0	0	3	2
15	MENDY Maeline	9	6	67%	0	6	1	5	3	60%	0	0	0	1	0
17	CHOSSENOTTE Shana	10	8	80%	0	1	0	1	0	0%	0	0	0	1	0
18	MENDY Melinda	30	19	63%	0	0	0	9	7	78%	1	1	0	0	0
20	JOSEPH Liana	6	5	83%	0	0	0	1	1	100%	1	1	0	2	0

In Possession - Offers & Receptions



			Offer movement types						
#	Player	Total Offers	In Front	In Between	Out to In	In to Out	In Behind	No Movement	Offers Received
1	BELHADJ Feerine	4	0	0	0	0	0	4	4
2	HAELEWYN Marion	2	0	0	0	0	0	2	0
6	SEGUIN Maelle	6	1	4	0	0	0	1	2
7	HAUGOU Pauline	8	3	1	1	0	3	0	1
8	NELLER Chloe	5	2	3	0	0	0	0	1
10	MOSSARD Juliette	35	2	23	1	2	6	1	6
11	FONTAINE Airine	2	0	0	0	0	0	2	2
12	SIERRA Pauline	1	0	0	0	0	1	0	0
13	NOTEL Lea	5	3	0	0	0	1	1	2
14	DIAZ Hillary	1	0	0	0	0	0	1	0
19	SCANNAPIECO Dona	6	0	3	0	0	3	0	3
15	MENDY Maeline	13	1	7	0	0	3	2	7
17	CHOSSENOTTE Shana	5	2	1	0	1	0	1	1
18	MENDY Melinda	5	0	2	0	0	2	1	2
20	JOSEPH Liana	3	0	1	0	0	2	0	2

In Possession - Distributions



#	Player	Passes Attempted	Passes Completed	Pass Completion %	Switches of Play	Crosses Attempted	Crosses Completed	Line Breaks Attempted	Line Breaks Completed	Line Break Completion %	Ball Progressions	Take Ons	Step Ins	Attempts at Goal	Goals
1	FENWICK Faith	50	27	54%	0	0	0	16	4	25%	0	0	0	0	0
2	ARCHIBALD Mya	45	34	76%	0	0	0	21	14	67%	0	0	0	1	0
3	OTTEY Ella	37	25	68%	0	3	0	5	3	60%	2	2	0	1	0
4	MARKESINI Zoe	49	38	78%	1	1	0	15	10	67%	0	0	0	1	1
6	HERNANDEZ GRAY Jeneva	29	26	90%	0	0	0	3	3	100%	1	0	1	0	0
7	ALLEN Amanda	16	11	69%	0	0	0	1	0	0%	1	0	1	1	0
8	JOURDE Florianne	16	13	81%	0	0	0	2	2	100%	1	1	0	0	0
9	ROSE Nyah	13	7	54%	0	0	0	3	1	33%	0	0	0	1	1
10	SMITH Olivia	22	15	68%	0	5	3	2	1	50%	0	0	0	0	0
17	OKEKE Janet	39	35	90%	0	1	0	7	6	86%	0	0	0	0	0
19	JOHNSON Anaya	36	27	75%	0	0	0	7	4	57%	0	0	0	1	0
11	CHUKWU Annabelle	2	2	100%	1	1	0	0	0	0%	1	0	1	2	1
13	WATSON Renee	2	2	100%	0	4	2	1	1	100%	1	1	0	1	0
15	COLLIN Jadea	8	6	75%	0	1	0	2	1	50%	1	1	0	0	0
16	McBRIDE Ella	1	0	0%	0	0	0	1	0	0%	0	0	0	0	0
18	BRIGGS Kayla	13	11	85%	0	0	0	1	1	100%	1	1	0	0	0

In Possession - Offers & Receptions



			Offer movement types						
#	Player	Total Offers	In Front	In Between	Out to In	In to Out	In Behind	No Movement	Offers Received
1	FENWICK Faith	9	0	0	0	0	0	9	5
2	ARCHIBALD Mya	11	7	1	0	0	0	3	4
3	OTTEY Ella	9	2	0	0	0	2	5	6
4	MARKESINI Zoe	1	0	0	0	0	0	1	0
6	HERNANDEZ GRAY Jeneva	27	9	14	1	0	1	2	8
7	ALLEN Amanda	14	0	2	2	0	6	4	4
8	JOURDE Florianne	11	4	7	0	0	0	0	3
9	ROSE Nyah	6	0	3	0	0	3	0	5
10	SMITH Olivia	30	1	11	1	0	16	1	8
17	OKEKE Janet	1	0	0	0	0	1	0	1
19	JOHNSON Anaya	23	8	13	0	1	0	1	7
11	CHUKWU Annabelle	1	0	0	0	0	1	0	1
13	WATSON Renee	7	0	0	1	0	6	0	1
15	COLLIN Jadea	10	0	1	1	2	4	2	6
16	McBRIDE Ella	0	0	0	0	0	0	0	0
18	BRIGGS Kayla	10	1	2	0	0	4	3	3



INDIVIDUAL DATA OUT OF POSSESSION

France 3 - 3 Canada

Out of Possession



#	Player	Tackles Made / Won	Blocks	Interceptions	Pressing Direct	Pressing Indirect	Duels Won - Aerial	Duels Won - Physical	Possession Contests won	Clearances	Loose Ball Receptions	Pushing On	Pushing On into Pressing	Possession Regains	Possession Interrupted
1	BELHADJ Feerine	0 / 0	0	0	0	0	0	0	0	0	2	0	0	2	0
2	HAELEWYN Marion	10 / 2	3	0	8	1	0	0	0	7	8	9	2	8	9
6	SEGUIN Maelle	4 / 3	3	1	9	9	2	0	3	2	12	12	4	8	2
7	HAUGOU Pauline	7 / 3	4	0	4	12	1	0	1	2	3	13	4	5	5
8	NELLER Chloe	0 / 0	1	0	5	4	0	0	0	0	6	4	2	0	1
10	MOSSARD Juliette	4 / 3	3	0	5	32	0	0	1	0	3	15	14	5	3
11	FONTAINE Airine	2 / 1	2	0	3	13	0	0	0	1	3	11	7	1	3
12	SIERRA Pauline	3 / 1	2	0	5	4	2	0	3	5	8	15	2	7	4
13	NOTEL Lea	10 / 3	4	1	15	6	2	0	2	14	10	14	4	11	12
14	DIAZ Hillary	7 / 2	5	2	2	1	1	0	1	1	3	1	0	9	2
19	SCANNAPIECO Dona	0 / 0	0	0	3	11	1	0	2	0	2	8	5	1	0
15	MENDY Maeline	2 / 1	2	0	4	4	0	0	0	1	4	2	2	5	0
17	CHOSSENOTTE Shana	0 / 0	1	0	1	10	0	0	0	0	3	7	3	0	0
18	MENDY Melinda	3 / 1	3	1	4	4	2	0	2	1	6	6	3	5	1
20	JOSEPH Liana	0 / 0	1	0	1	4	0	0	0	0	3	1	1	1	1

Out of Possession



#	Player	Tackles Made / Won	Blocks	Interceptions	Pressing Direct	Pressing Indirect	Duels Won - Aerial	Duels Won - Physical	Possession Contests won	Clearances	Loose Ball Receptions	Pushing On	Pushing On into Pressing	Possession Regains	Possession Interrupted
1	FENWICK Faith	0 / 0	0	0	0	0	0	0	0	0	9	0	0	12	0
2	ARCHIBALD Mya	7 / 5	0	1	8	8	2	0	2	4	7	17	11	8	1
3	OTTEY Ella	2 / 1	3	0	5	3	1	0	3	5	8	3	0	6	2
4	MARKESINI Zoe	1 / 0	6	1	0	3	2	0	2	5	3	5	2	7	6
6	HERNANDEZ GRAY Jeneva	2 / 1	2	4	3	7	3	0	3	0	10	2	0	6	2
7	ALLEN Amanda	2 / 0	1	0	4	13	0	0	0	0	9	5	5	0	0
8	JOURDE Florianne	4 / 2	4	0	6	13	1	0	1	0	6	8	7	4	1
9	ROSE Nyah	3 / 0	1	0	1	11	1	0	1	0	3	3	2	0	2
10	SMITH Olivia	3 / 1	5	0	3	12	1	0	2	0	6	2	1	2	3
17	OKEKE Janet	1 / 0	5	1	1	0	0	0	0	6	12	2	0	6	4
19	JOHNSON Anaya	9 / 3	1	0	2	4	3	0	3	1	15	7	2	6	4
11	CHUKWU Annabelle	2 / 1	0	0	1	3	0	0	0	0	3	1	0	1	1
13	WATSON Renee	2 / 0	0	0	2	6	0	0	0	0	2	1	1	0	1
15	COLLIN Jadea	2 / 0	2	0	1	3	0	0	0	0	3	6	3	2	1
16	McBRIDE Ella	0 / 0	1	0	0	0	0	0	0	1	2	0	0	1	1
18	BRIGGS Kayla	1 / 0	2	0	4	4	0	0	0	0	7	3	0	1	0

